

OUR BIGGEST SALE OF THE CHRISTMAS SEASON!



SUNDAY AFTERNOON ONLY-- FROM 11-6—SEVEN BIG HOURS!

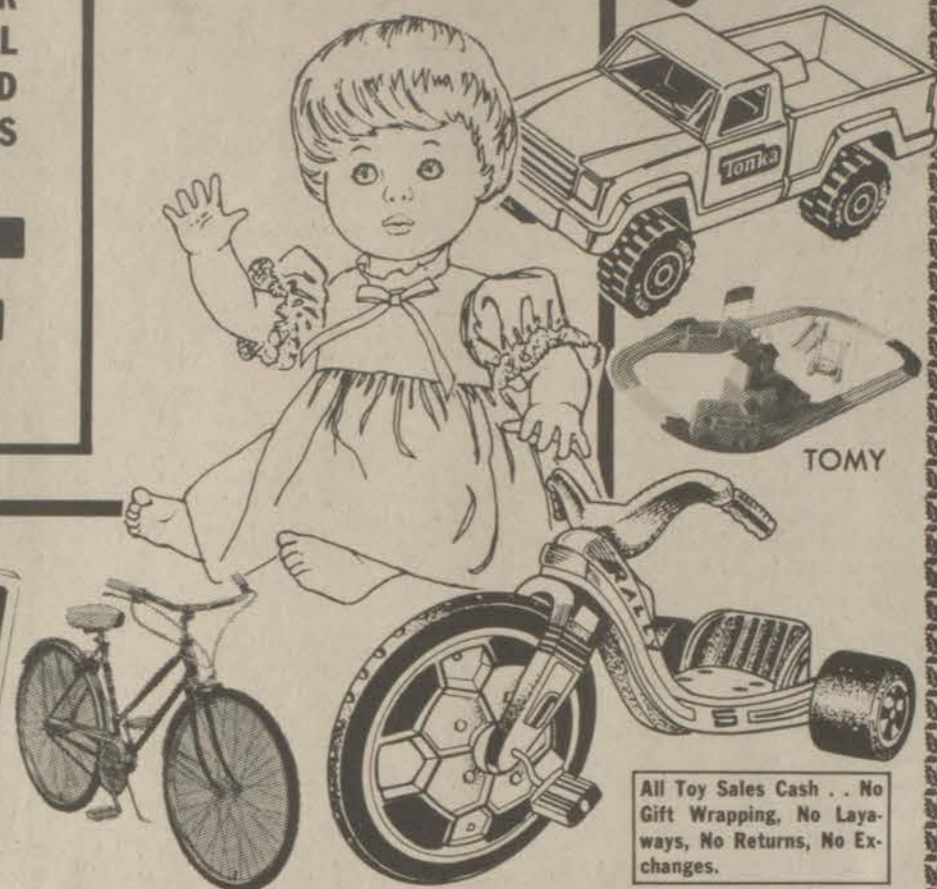
OUR COMPLETE STOCK OF TOYS—TONKA TOYS • DAISY AIR RIFLES • TOMY BATTERY OPERATED TOYS • DOLLS • TEA SETS • DOLL CARRIAGES • ROCKING HORSES • WAGONS (In Carton) • TRICYCLES AND BICYCLES (In Carton) • SLEIGHS • ROAD RACING SETS • TRAIN SETS • GAMES GALORE!

10% OFF

SUNDAY 7 TO 11 ONLY...

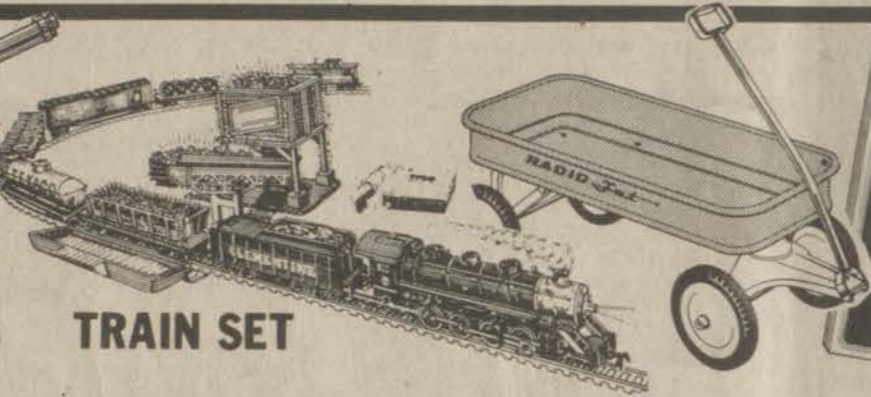
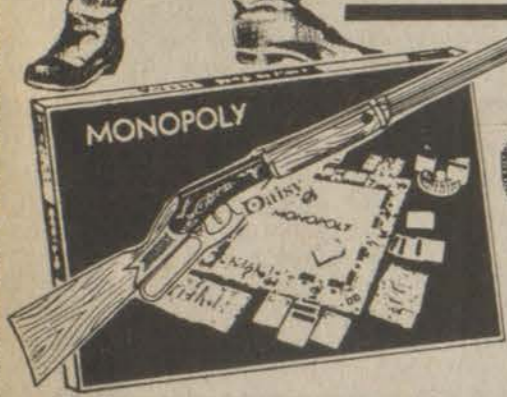


Car Carrier



TOMY

All Toy Sales Cash . . . No Gift Wrapping, No Lay-aways, No Returns, No Exchanges.



TRAIN SET



ALL CHRISTMAS TREES.....NOW 20% OFF



OUR ENTIRE STOCK OF LIVING ROOM SUITES, DINING ROOM SUITES, BEDROOM SUITES, DINETTES, ROCKERS, DESKS, RECLINERS AND GUN CABINETS

ALL 10% OFF

OUR LOW SALE PRICE



EARLY AMERICAN 4-PIECE BEDROOM SUITE \$399⁸⁸
• Six-drawer double dresser
• Mirror • 4-drawer chest
• Twin or full-size bed
Reg. Price \$569.95
SALE PRICE



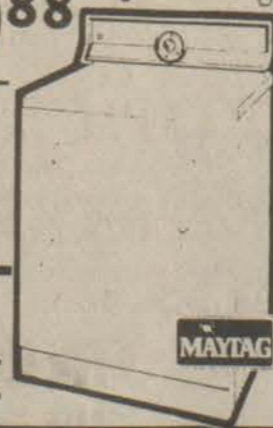
...the bright white way to turn her dream into a reality!

FOUR-PIECE GROUP INCLUDES: DOUBLE DRESSER, MIRROR, CHEST AND CANOPY BED

REG. PRICE \$769.95 Now \$599⁸⁸

mar-and-stain resistant plastic tops!

This sparkling, feminine classic is styled for the young and priced for parents. A bit of romance that makes your daughter's room truly her own. This suite is so charming she'll never outgrow it. Each piece is constructed of selected hardwood solids and the choicest veneers to give years of beautiful service.



BEDDING SPECIALS!

GOOD—SEALY, REGULAR, FULL-SIZE MATTRESS AND BOX SPRINGS

\$159⁹⁰ Per Set

BETTER—SEALY, REGULAR, FULL-SIZE MATTRESS AND BOX SPRINGS

\$179⁹⁰ Per Set

SEALY QUILTED, REGULAR, FULL-SIZE MATTRESS AND BOX SPRINGS

\$199⁹⁰ Per Set

SEALY DELUXE, REGULAR, FULL-SIZE MATTRESS AND BOX SPRINGS

\$219⁹⁰ Per Set

★ OVER 50 BEDROOM SUITES—SAVE \$150 TO \$400 ★



SUITES IN MAPLE, PINE, OAK AND CHERRY

PINE ROCKERS NOW \$129⁸⁸

• TAKE WITH IN CARTON • OTHERS TO CHOOSE FROM

• 5-PIECE MAPLE BEDROOM SUITE **\$697⁰⁰**

Huge Triple Dresser, Mirror, Large Chest Full-Size Bed, Night Stand. List Price \$899.95 Sale Price

• 5-PIECE OAK BEDROOM SUITE **\$697⁰⁰**

Huge Triple Dresser, Mirror, Large Chest, Full-Size Bed, Night Stand. List Price \$899.90 Sale Price

• 4-PIECE MAPLE BEDROOM SUITE **\$399⁸⁸**

Double Dresser, Mirror, Full-Size Bed, Chest. List Price \$569.95 Sale Price

• 4-PIECE PINE BEDROOM SUITE **\$399⁸⁸**

Double Dresser, Mirror, Full-Size Bed, Chest. List Price \$569.95 Sale Price

• 4-PIECE WHITE BEDROOM SUITE **\$449⁸⁸**

Double Dresser, Mirror Full-Size Bed, Chest. List Price \$599.95 Sale Price

• 3-PIECE SOLID OAK BEDROOM SUITE **\$369⁸⁸**

Triple Dresser, Mirror, Full-Size Bed. Sale Price

★ ANY 21- OR 18-CU. FT. HOTPOINT REFRIGERATOR
★ ANY HOTPOINT ELECTRIC RANGE, HARDWICK OR ENTERPRISE GAS OR ELECTRIC RANGE ★ ANY MAYTAG WASHER OR DRYER

EXTRA **10% OFF**

Hotpoint Heavy Duty WASHER & DRYER White. Our List \$769.95 Sale Price **\$699⁸⁸** Per Pair
Take With . . . In Carton . . . Color Higher

Maytag Deluxe WASHER & DRYER White Sale Price **\$879⁹⁰** Per Pair
In Carton—Take With.

Maytag Heavy Duty WASHER & DRYER White. Sale Price **\$899⁹⁰** Per Pair
In Carton—Take With.

FAMOUS MAYTAG WORK HORSE WRINGER WASHER **\$399⁹⁵** SAVE ON THIS!

ARROWOOD'S HARDWARE & FURNITURE

TWO LOCATIONS IN PRESTONSBURG:

PH. 886-6116, SO. LAKE DRIVE • PH. 886-2703, COURT ST.

★ EXTENSION SERVICE NEWS ★

By JOHN E. SPARKS
County Extension Agent
for Agriculture

THE TRADITION OF
THE CHRISTMAS TREE

The use of evergreen trees at Christmas provides a time when Americans are brought in close contact with the fragrance and freshness of the forest. The Christmas tree went through a long process of development, and the modern tree bears little resemblance to those of the past.

Some people trace the origin of the Christmas tree to pre-Christian times - to ceremonies of the ancient Egyptians and Druids. While these people made abundant use of greens and trees in their ceremonies, the connection to the modern tree is quite remote.

One legend traces the origin of the Christmas tree to St. Boniface in 8th century when he declared at Odin that a young fir tree should be the holy tree.

Some historians trace the lighted Christmas tree back to Martin Luther (1483-1596). Briefly, the story goes that while strolling through the countryside one Christmas Eve he was impressed by the snow-flecked evergreen trees sparkling in the moonlight. After returning home he tried to explain the experience to his family and attempted to reproduce the outdoor scene. To a small evergreen tree he attached lighted candles to simulate the reflections of the starlit heaven—the heaven that looked down over Bethlehem on the first Christmas Eve.

Some authorities trace its origin to the mystery plays of the 11th or 15th centuries. These often represented the creation of man and expulsion of Adam and Eve from paradise. The garden of Eden was represented by gaily decorated fir trees. Sometime during the 15th century, the church suspended the production of mystery plays in the church. The paradise trees were then erected in homes and other places.

At this time in history the people along the Rhine River had the custom of lighting candles on December 24 to celebrate the birth of Christ. In many homes the candles were placed on a specially designed stand that had the

form of a pyramid. It was often decorated with glass balls and brightly colored objects. Soon the two symbols blended into what we now know as the Christmas tree. Up until about 1700 the use of Christmas trees appears to have been confined to the Rhine River district of Germany. After 1700 the use spread and soon became a tradition in other parts of Germany.

The first record of trimmed Christmas trees in the United States appears in the period of the American Revolution when Hessian soldiers recently from Germany made use of them. The practice did not gain much headway until about the middle 1800's in this country.

Finland is credited with having accepted the custom about 1800, Denmark by 1810, Sweden by 1820, and Norway about 1830. From these Scandinavian countries the custom spread to France and England about 1840.

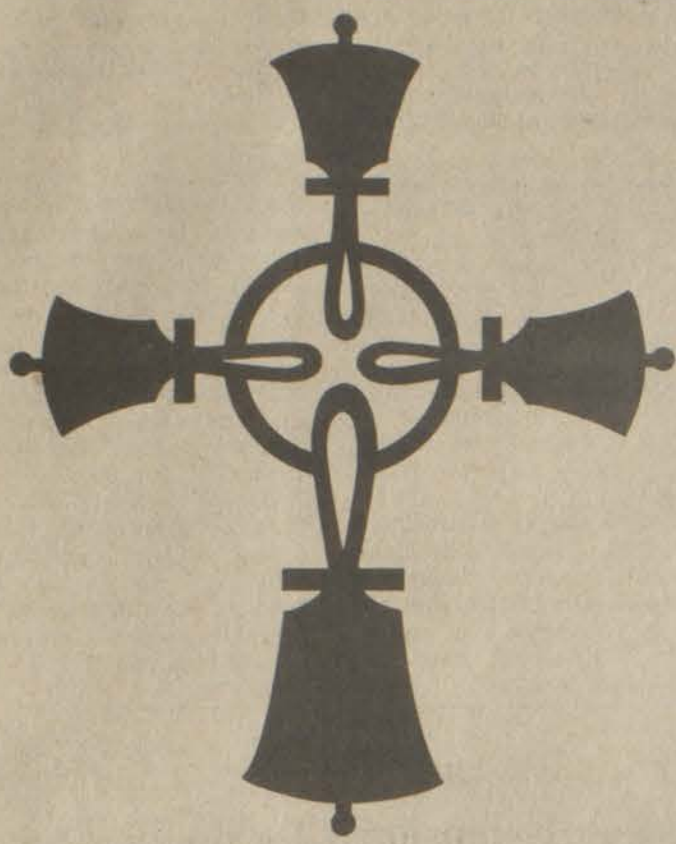
Today, regardless of age, race, or creed, the evergreen tree provides the proper setting for a truly happy holiday season.

ATTENDS CHRISTMAS DINNER

Mrs. Leatha Joy and Gladys Powell were dinner guests of Mrs. Thomas Alley at her Pikeville home recently. Other guests were Mr. and Mrs. Claude Brown, Mr. and Mrs. Oliver Blackburn, Mr. and Mrs. Jesse Bartley, Elmer H. Mullins, Deputy Grand Patron of Dist. No. 5, O.E.S. and Mrs. Eliza Mullins, Onsbj Johnson, Mrs. Georgia Munsey, Mr. and Mrs. James Polley, and Miss Emma Lou Thompson.

CARD OF THANKS

The family of Barton Rice wants to take this opportunity to thank each and everyone for their kindness and words of comfort. To Dr. Ira B. Potter, and the Highlands Medical Center; Mrs. Freda Barnett for her beautiful floral arrangements; the ones who sent flowers and food; to Gus Andrews, Rondal Hayes, and the Hueysville Church of Christ Choir for their words of comfort; and special thanks to Hall Funeral Home for their fine and efficient service. This kindness shown will always be remembered.



You are invited to attend the 1980

Christmas Concert

by

The Wesley Bell Choir

and

The Rhythmic Choir

Sunday evening, December twenty-one

at seven o'clock

The First United Methodist Church

South Arnold

Prestonsburg, Kentucky

Merry Christmas

LUCKY LADY
7 Diamond Clusters



fashionable squares

classic rounds

Your choice only
\$99.50
Reg Price \$195.00

HOURS
Mon.-Sat. 9-8



Seven diamonds sparkle with the beautiful radiance of a single diamond. Real cut diamonds — seven in all — yet still affordable. Why not treat yourself or a loved one to that cluster ring you've always wanted.

CLYDE BURCHETT

Jeweler

Phone 886-2734
Court Street
Prestonsburg

Illustrations
enlarged to
show detail

HIGHLAND TERRACE APARTMENTS

APARTMENT LIVING FOR
THE ELDERLY AND THE HANDICAPPED.
**SOME APARTMENTS
STILL AVAILABLE**

CONTACT: JULIA M. MAY
886-2717

Pk 'n Pay Shoes \$5
Knee socks ... any 5 pairs \$5

Women's knee socks in your choice of styles. All are regularly \$1.59 per pair.

a. Rugby stripe.
b. Cuffed solid.
c. Barber pole stripe.
d. Terry wide stripe.

Limit 10 pairs per customer.

U.S. 23 North
Near Sears Prestonsburg

Sale price good thru Sunday. Master Card or Visa. Open evenings and Sunday 1-8 pm.

GET INVOLVED NOW

THE FIRST COMMONWEALTH BANK WILL HAVE AVAILABLE AS OF JANUARY 1, 1981, INTEREST ON CHECKING ACCOUNTS, CALLED **NOW ACCOUNTS** IT'S A CHECKING ACCOUNT THAT EARNS INTEREST . . . LIKE A SAVINGS ACCOUNT. THE RATE OF INTEREST IS 5¼% PER ANNUM WHICH IS COMPUTED DAILY AND PAID MONTHLY ON YOUR STATEMENT CYCLE DATE . . . AND YOU HAVE ALL THE CHECK WRITING PRIVILEGES OF YOUR REGULAR CHECKING ACCOUNT.

WE REQUIRE A \$5.00 SERVICE CHARGE IF YOUR **NOW** ACCOUNT BALANCE FALLS BELOW \$1,500.00 DURING ANY STATEMENT CYCLE PERIOD.

STOP BY ANY FIRST COMMONWEALTH LOCATION TO OPEN YOUR COMMONWEALTH **NOW** ACCOUNT OR CALL OUR COMMONWEALTH **NOW** ACCOUNT COUNSELOR, HELEN NEELEY, FOR FURTHER DETAILS AT 886-2321, EXT. 258.

FIRST COMMONWEALTH BANK

VISA PRESTONSBURG, KY. MasterCard

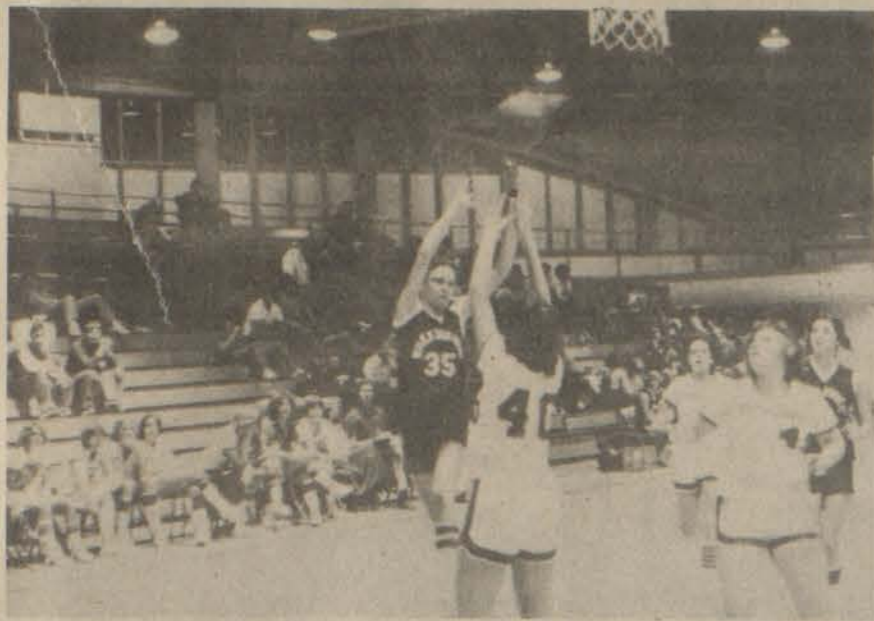
PHONE 886-2321 BURL WELLS SPURLOCK PRESIDENT TIME & TEMPERATURE 886-9311

TWIN BRIDGE BRANCH MARTIN MAIN OFFICE 3 NO. LAKE DR., PRESTONSBURG BETHSY LAYNE BRANCH BETHSY LAYNE

NORTH LAKE DRIVE BRANCH PRESTONSBURG

FDIC

Betsy Layne Girls Down Trojans



(Anna Thornsberry and Alan Tackett, WHS Journalism)
Action underway in recent Wheelwright-Betsy Layne girls' game. The Betsy Layne Lady Bobcats defeated the Wheelwright Lady Trojans Friday, Dec. 5 at Betsy Layne by the score of 63-35. Shelia Johnson led the Bobcats with 17 points. Close behind her was teammate Lela Layne with 16 points. Cassandra Keathy contributed 10 points, Brena Reynolds scored five, and Chris Cross came off the bench and scored four points. Kim Tackett and Lecia Mulkey both had two points and Kris Lawson scored one point. Mia Jones led for the Trojans with 10 points. Anna Thornsberry scored six points, Evelyn Boyd, five and Pabby Holbrook, Kami Ferrari and Janet Little all contributed four points. Natalie Johnson scored two points. In the first quarter, the Bobcats scored 17 points while the Trojans earned only two. The rest of the game saw Betsy Layne on top by at least a 20-point lead.

Rice's Crispies . . .

The Deer Hunters

By KENNY RICE
There they are in the woods, armed with only a bow and arrows, seeking the elusive deer. They are true hunters, scouting the wilderness, learning the habits of their prey, walking for miles and waiting for hours for a chance to draw the bow and release an arrow toward their game.
The life of a bow hunter requires patience, more than any other outdoor sport. They must sit and watch, hoping they have learned the routine of the deer, when and where the deer will pass. About one in ten bow hunters gets the opportunity to shoot at a deer, much less kill one.
For more than a decade, Mike Tackett, Brent Clark, Clyde Tackett, Joe David Taylor, Frank Johnson, Doug Stratton and Larry Joe Osborne have performed this special ritual of entering the hills of Kentucky and West Virginia with bow and arrow and plenty of perseverance to hunt deer. They are a special group of hunters.
"The bow season lasts about two months so we can hunt longer than we could with a gun. That got us interested, but the challenge is what keeps us interested in bow hunting," Mike Tackett explains. "With a gun you can sometimes be lucky by being in the right place at the right time. Bow hunting requires more working and, we feel, it is more rewarding."
Tackett remembers many days of scouting the hills around Dewey Lake and seeing few deer and fewer bow hunters. He points to the years Jenny Wiley State Park was closed to hunters as being a major contributor to the bow hunting boom.
"They did a good job of game management at Dewey Lake. There were seasons when I didn't get a shot at a deer because there were none around. Now there is quite a bit of game in that area and it is more enjoyable to hunt there. More people are willing to try bow hunting close to home when they know they will at least see a deer."
Another factor for the rise in bow hunting since the mid-1970's was the pioneer hunting area at Cave Run where several local hunters had their first experience at drawing a bow string instead of squeezing a trigger.
The bows are not compound and the arrows are graphite. They are easier to pull, more powerful and more accurate than they were when this group began what has become a part of their life in the autumn of each year.
Bow hunting has been made more

convenient by technology but the challenge for the hunter is intact. The deer seem to be more difficult to track each year, the nerves of the hunter face sterner tests. The rewards are more gratifying and they keep hunting.
NEW PARK
New KY 80 has not only been a blessing for the Right Beaver Creek area of the county as far as transportation; it may also mean Allen Central High will finally get a baseball park due to the new road.
The construction company working on the Eastern to Garrett part of the new road has been occupying the field a few yards from the school just off old 80, to park their vehicles and mix cement.
Part of the agreement between Allen Central and the company is that the company will use its equipment to fill in the lot and build a baseball field for the school.
Allen Central has never had a baseball park to call their own. The Rebels have used a field at Wayland for their home games in the past.
The field is expected to be completed before spring, in time for Allen Central to start preseason practice and to play the entire season on their very own field.
There have been promises in the past that Allen Central would have a baseball park, so no one at the Eastern school is certain the Rebels will have one next spring, but the possibility is better than ever.

To Appear on Christmas TV Show



The Honor Choir of Prestonsburg High School will be one of 15 high schools participating in the WOW-TV "Five Hours of Christmas" to be seen Christmas morning. Choir members, are, from left in front, Johnna Hill, Tia Music, Missy Wicker, Kim Hughes, Monica Rice, Lisa Lafferty, Elizabeth Frazier, Director. In second row, are Kara Alexander, Jennifer Burke, Gina Bevins, Stephanie DeRossett, Renita Haywood, Robyn Goble, Karen Ousley. In third row, are Sam Huffman, Debbie Schneider, Donna DeRossett, Teresa Campbell, Rona Lawson, Linda Wells, David Ellis. In back row, are Jack Wells, Chris Carter, Randy Tincher, Mike Wells, B. J. Sturgill, John Anderson, Mike Walls. Members not pictured are Coletta Harris, John Burchett, Jeff Shupe, Kari Owens, Beth Clifton.

AIR CHARTER SERVICE
From Paintsville - Prestonsburg Airport
Save valuable time you would otherwise spend driving. For example:
To Lexington - 40 to 60 min.
To Louisville - 60 to 90 min.
To Charleston - 30 to 45 min.
Call for a quote to anywhere in the Continental United States (excluding Alaska)
Paintsville Aviation
(606) 789-6714 Airport (606) 789-8408 24 Hrs.
12-16-81

A SALUTE
Some fine folks who are often overlooked but are vital to making a trip to local sporting events more enjoyable and convenient are the volunteer members of the rescue squads and fire departments of Floyd county.
These people stand out in some of the coldest and dampest weather to make sure we have a place to park our car and to make sure we can get started homeward within a short amount of time after the game.
I don't think anyone in the county takes them for granted, it is just that sometimes we forget to say thanks for your time and effort.
"Thanks."

Minimum Wage To Go Up Jan. 1st
An estimated 87,300 workers in Kentucky will be eligible for a pay raise on Jan. 1, 1981, when the federal minimum wage increases from \$3.10 to \$3.35 per hour.
According to Robert MacDonald, chief labor market analyst for the Department for Human Resources, eligible workers are those covered by the Fair Labor Standards Act who currently earn less than \$3.35 an hour. Nationally, more than 5.6 million of the 60 million workers covered by the act will be eligible for pay increases.
The Jan. 1 change in the minimum wage was provided for in 1977 amendments to the act.
MacDonald said most of the Kentucky workers receiving increases are the white-collar workers employed in service-producing industries and that about 60 percent are women.
Also beginning Jan. 1, farm workers hired by an employer who used more than 500 man-days of agriculture labor in any calendar quarter of the preceding year must also be paid at least \$3.35 an hour.



You are invited to attend the 1980
Cantata
"There Will Always Be A Christmas"
Sunday Morning, December Twenty-First
At Eleven O'Clock
The Community
United Methodist Church
710 Burke Avenue,
Prestonsburg, Kentucky
The Church Where Exciting Things Are Happening

sale

\$14 Reg. 26.95 **SAVE 12.95**
Ladies 6 1/2-10. Brown, Black, Wine.

\$14 Reg. 29.95 **SAVE 15.95**
Big Girls 5-7. Brick.

\$14 Reg. 18.95 **SAVE 4.95**
Girls 12 1/2-4. Rust Pocket Boot.

\$18 Reg. 21.95 **SAVE 3.95**
Girls 10-4. Tan/Multi-Stitching

Shoe Show
Nightland Plaza, Prestonsburg
Hours: Mon-Sat. 10-9, Sun. 1-6

MARTIN VOLUNTEER FIRE DEPT. PRESENTS INTERNATIONAL CHAMPIONSHIP

WRESTLING
FRIDAY, DECEMBER 26—8:30 P.M.
AT MARTIN GRADE SCHOOL, MARTIN, KY.

.....**MAIN EVENT—\$5000 BOUNTY MATCH**.....
Bob Orton, Jr. Vs Ronnie Garvin
W/MGR. IZZY SLAPAWIRZ W/MGR. WEE WILLIE

GRUDGE MATCH
DOUG VINES vs. RIC McCORD
JEFF SWORD vs. BIG BOY WILLIAMS

THE MIGHTY MIDGETS
CUPID vs WEE WILLIE

RINGSIDE \$5 • GENERAL \$4
CHILDREN UNDER 12, \$3

EXCELLENT CHRISTMAS IDEA!
ADVANCE TICKETS ON SALE AT
MARTIN CITY HALL

WEE WILLIE **MIGHTY CUPID**

There are Reasons more people shop here...

GREETINGS

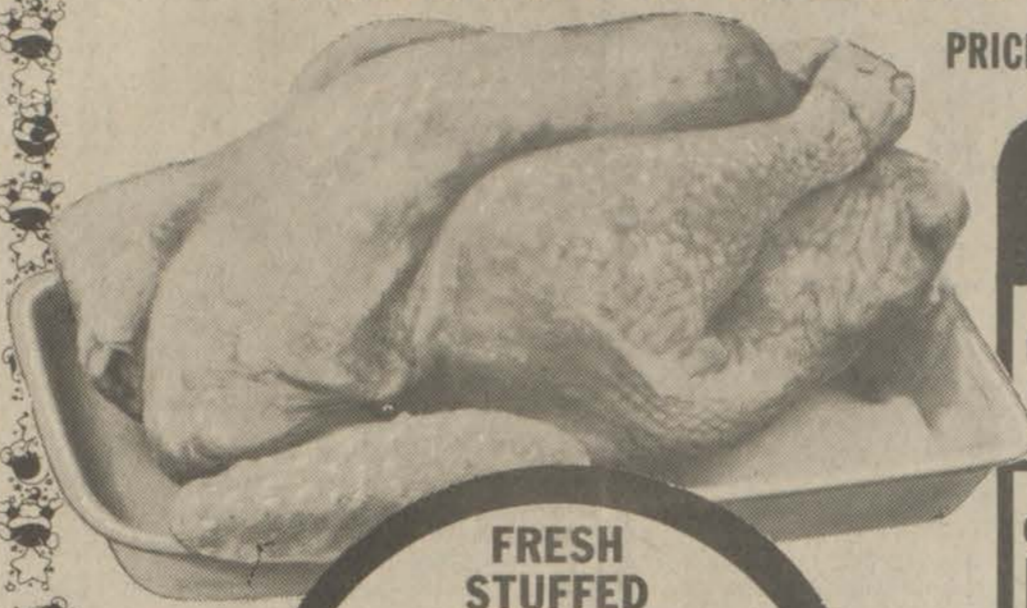


May the festive spirit be yours throughout all of the holiday season and thereafter.

FARMER'S MARKET

OPEN 8 TILL 10 SEVEN DAYS A WEEK
PHONE 478-5275 • HAROLD

PRICES EFFECTIVE THRU SUNDAY, DEC. 21.



FRESH STUFFED
ROASTING HENS
69¢ Lb.



ARMOUR BONELESS SPEEDY-CUT
HAM
\$1.98 Lb.

SLICED PORK SHOULDER PICNIC
89¢ Lb.

MEAT SPECIALS	
PORK SPARE RIBS	89¢ Lb.
COUNTRY STYLE PORK SAUSAGE	89¢ Lb.
OVEN READY MEAT LOAF	\$1.49 Lb.
FRESH GROUND BEEF	\$1.29 Lb.
ARMOUR PEAR-SHAPED CANNED HAM	\$5.98 3-Lb. Can
SLICED COUNTRY FRESH SIDE BACON	\$1.49 Lb.

WE RESERVE THE RIGHT TO LIMIT QUANTITIES.

MAXWELL HOUSE
COFFEE
\$6.99
3-Lb. Can



TROPICANA
ORANGE JUICE
\$1.19
HALF GALLON

BORDEN'S
BUTTERMILK
92¢
HALF GALLON

EXTRA FANCY CALIFORNIA
RED GRAPES
69¢ Lb.



WESSON
OIL
\$1.89
38-Oz. Btl.

GOLDEN RIPE
BANANAS
4 \$1 Lbs.



OCEAN SPRAY
CRANBERRY SAUCE
2/99¢
16-Oz. Cans

BOUNTY
PAPER TOWELS
72¢
Jumbo Roll

DEL MONTE
NO. 2 1/2 CAN
PUMPKIN
59¢

SNYDER
POTATO CHIPS
99¢
9-Oz. Bag

HUNT'S
TOMATO JUICE
2/59¢
13-Oz. Cans

BIRD EYE
COOL WHIP
69¢
8-Oz. Cup

KEEBLER
VANILLA WAFERS
79¢
12-Oz. Box

TRAILBLAZER
CHUNK DOG FOOD
\$3.99
25-Lb. Bag

CELERY
59¢
LARGE STALKS



120 SIZE EXTRA LARGE
TANGERINES
\$1.29 Doz.



FRESH FROM THE SUNSHINE STATE
ORANGES
\$1.19
5-Lb. Bag



FARMER'S MARKET

Open 8 till 10, Seven Days a Week PHONE 478-5275 HAROLD

Guide for Giving Pets as Gifts

Christmas looms on the horizon and you start that long search for the ideal gift, one guaranteed to capture your child's attention and hold it long after the holiday has passed.

Shortcut that search and check out your local pet store. Last year, more than one million dogs and cats, not to mention thousands of hamsters, birds and fish were given as Christmas gifts. Not surprisingly, a vast majority of these gifts were for children.

Why do animals make such popular children's gifts? For one thing, pets are good companions for the child to share activities with. Child psychologists have found that

only children, who can be very lonely, find pets great sources of comfort; in some cases, pets even become surrogate brothers and sisters. In addition, through caring for a pet, children learn valuable lessons in responsibility and social interaction that can be later applied to real life situations. In return for the attention they receive, pets will give years of love and devotion to the child.

Once you've decided to purchase a pet as a Christmas gift, a tougher decision must be made: Which pet should it be?

Here's how to choose a pet, and how to introduce one into your home as easily as possible:

3-6-year-olds: Generally speaking, few children (and adults) can resist the thought of having their own puppy or kitten. These pets are favorites with children of any age, but especially with young children because they not only provide the activity and stimulation a child needs, but they're also responsive to a child's advances. As the child



grows, so does the pet, which will be able to participate in the child's activities regardless of whether the child is four or fourteen.

Parents should recognize that puppies and kittens do require a lot of care, particularly during their first few months and an adult should supervise the animal's care and feeding. In addition, parents should interact with the child and his pet during the first few play periods together, to demonstrate the proper way of handling the pet to prevent bites and scratches.

7-10-year-olds: Children between the ages of 7 and 10 are fascinated by hamsters, gerbils, and guinea pigs. The animals' soft fur, small size and inquisitive manners naturally attract children. These pets are easy to care for and can be kept in any number of interesting cages that can be set up in the child's own room.

This is also the period in a child's life when a parent can "spawn" a child's interest in fishkeeping with a gift of a fishbowl and several goldfish. Then, as the child's interest grows, additional equipment—

heaters, lights, larger tanks, etc.—can be bought to further introduce the child to the world of tropical fish.

11-14-year olds: Any of the previously discussed pets are suitable for the adolescent, and a child between the ages of 11-14 is usually ready to assume full responsibility for the care, feeding and even training of a pet.

Bringing The Pet Home

After you've decided what kind of pet is best for your child, the next step is to introduce the pet to your home as easily as possible.

Thoroughly plan and prepare for the new family member's arrival. To introduce a new pet to the household:

Buy in advance: Don't wait until the last minute to buy a pet for Christmas. Orders must be placed well in advance for some purebred dogs and cats, and for more exotic birds and fish. Pet stores offer a wide variety of animals to choose from, and gift-givers should allow themselves the time to look around, consider alternatives, and decide.

Before the new pet comes home: Planning and forethought will make the arrival of a dog or cat happier and more pleasant for pets and owners alike. Before the pet is brought home, triple-check to insure that all essential accessories are on hand.

Kittens and puppies will require the most forethought. Each must have a warm bed to sleep in and they'll often sleep better with an old windup clock near the bed; its ticking reminds the pet of mother.

Dogs and cats will require bowls for food and water, and collars. A new kitten will also require a litter pan with commercially-prepared litter.

Anticipate the pet's food needs, remembering that rich holiday food is not the pet's ideal diet. Check with the breeder or pet shop where you purchase the pet to find out what its dietary requirements will be.

(Continued on Following Page)

NOTICE
Would the person who called Rev. Darrell R. Jones from Weeksburg concerning purchase of the church building at Martin, please contact him at 874-2723.

FOR SALE
Two new flat-top guitars, one violin, one mandolin and one banjo.
Call 886-2601

FOR SALE
1978 Toyota Celica GT Liftback. Air cond., p.s., p. b., AM-FM 8-track, rear wiper and defroster, Targa Band, Shadow package, alloy wheels. Low mileage. \$4,995.
Phone 358-4457
12-16-21-pd

Merry Christmas— Happy New Year

We are pleased to take this opportunity to wish one and all a very merry Christmas and a happy and successful New Year. We particularly wish to thank our esteemed clients for their confidence. It has been our desire to serve small accounts, as well as large ones, faithfully, honestly, efficiently and promptly.

RATLIFF and LENOX REAL ESTATE
Phyllis Ratliff Lenox, Broker-Realtor,
Office Manager

Photo Processing Special
Color Print Film
Developed and Printed
With These Coupons
To be valid, coupons must accompany order.

\$2.39 12 EXPOSURE ROLL
Color Print Film
DEVELOPED AND PRINTED
L-01 Coupon Valid 12/24-1/10

\$3.59 20 EXPOSURE ROLL
Color Print Film
DEVELOPED AND PRINTED
L-01 Coupon Valid 12/24-1/10

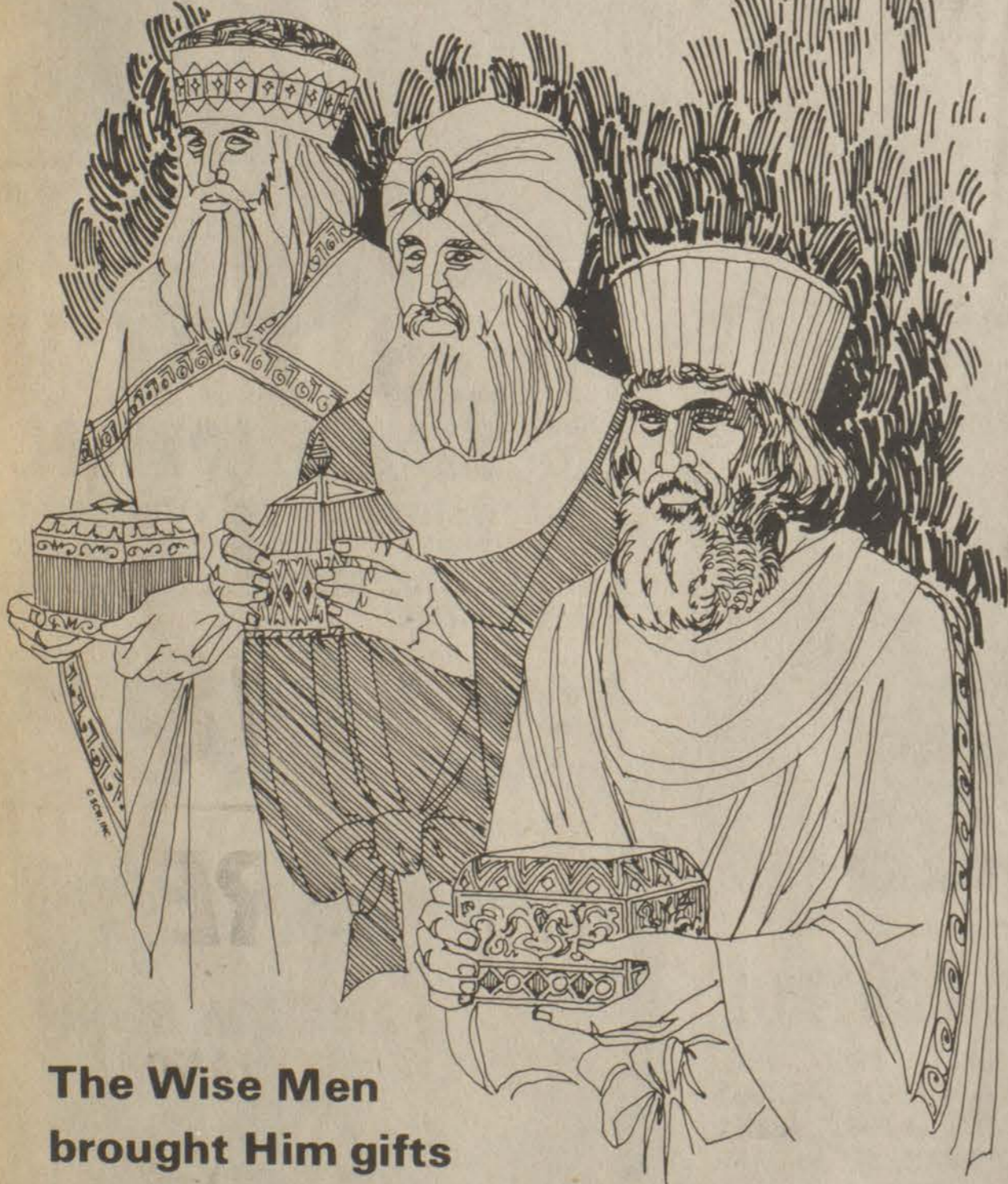
\$3.99 24 EXPOSURE ROLL
Color Print Film
DEVELOPED AND PRINTED
L-01 Coupon Valid 12/24-1/10

\$5.49 36 EXPOSURE ROLL
Color Print Film
DEVELOPED AND PRINTED
L-01 Coupon Valid 12/24-1/10

• Additional Coupons Available At Photo Counter •

Herrin-Johnson Pharmacy
Phone 886-3884 Highlands Plaza Prestonsburg

NOEL



The Wise Men brought Him gifts of gold, frankincense and myrrh—let us give Him our hearts at Christmas!

Music-Carter-Hughes
Chevrolet-Buick
Prestonsburg

YULETIDE GREETINGS



"... For it is good to be children sometimes, and never better than at Christmas..."

Charles Dickens

RAY HOWARD FURNITURE STORE
AND
THE FURNITURE BARN
Prestonsburg

Pet Guide

(Continued from Preceding Page)

Provide some toys for the puppy or kitten to play with. These young animals love to chew, and providing them with toys might keep them from exercising young teeth on the furniture.

Acclimate, Don't Aggravate

Christmas morning is a very chaotic time to introduce a pet kitten or puppy to a child. Ideally, the new pet should be introduced to the home before Christmas morning. Just prior to Christmas, you can bring your kitten or puppy home with a bow on its neck. Pets should never be put in a box and wrapped up. This could cause them to suffocate. Let your children know that this is just their first gift. You are giving it to them early so that the pet can enjoy Christmas morning with everyone. Then, on the 25th, include a gift under the tree for the pet as well, such as a bone or stuffed toy.

Your child's natural instinct will be to love and cuddle the new furry addition constantly. But, since many pets, especially kittens and puppies, tire easily, it's your responsibility as a parent, to explain that the new pet requires rest—just as a new baby does. If an animal doesn't have an opportunity to rest, it will become cranky. Consider setting special "play-times" for the child and pet to alleviate the problem.

To introduce fish to your children takes two steps. Aquariums can be easily wrapped and placed under the tree; fish cannot. But, a gift certificate for fish can be wrapped or even "stuffed" in a stocking allowing recipients the fun and excitement of selecting their own pets. A trip to a pet shop can be very educational and interesting, providing proper care instructions on fish selected, as well as other animals that make good pets.

A 10-gallon capacity tank is an adequate size for beginners. Many varieties of fish and plant life can comfortably inhabit a tank this size, and the care and maintenance of a fresh water tank is simple enough even for children. In addition to the aquarium, a thermometer, filter, pump and lighting device should also be purchased. Most pet shops offer complete kits with everything needed to set up an aquarium, for a total cost of under \$30.

In addition to the "tank hardware," gravel should also be purchased. Gravel, preferably grade number 3, will allow new aquarium enthusiasts to secure any plants they may wish to include in the underwater environment, while adding a decorative touch to the tank itself.

After the fresh water tank has been set-up, it's time for a trip to the pet shop. When lucky recipients visit the shop, certificates can be exchanged for a colorful array of attractive fish and sometimes also for tank accessories. Pet shop personnel are ready to answer questions about aquarium set-up, maintenance and can assist the new hobbyist with actual fish selection.

Miniature Marine Worlds

A salt water aquarium is like having a miniature ocean in the home. The bright, almost fluorescent colors of salt water species are just as appealing as the bright lights on a Christmas tree. Although salt water aquariums generally involve more care than a fresh water set-up, they can be easily maintained with careful preparation.

The biggest difference between salt and fresh water aquariums is the set-up time. Two to three weeks must be allowed for all pH, ammonia, nitrite and nitrate levels of the salt water aquarium to be conducive to fish life. So while the aquarium can be set-up right away, a trip to the fish store will have to be postponed until the tank is ready for inhabitants.

Select a tank of 20 gallons or more, since salt water fish as a rule, are larger than fresh water species. In addition to the "hardware" needed for a fresh water environment, a salt water tank hydrometer is necessary.

Flying Gifts

Birds are favorite Christmas pets because they are colorful, amusing and respond to human attention. Birds such as parakeets, cockatiels and parrots can be trained to mimic speech, macaws are among the species that can do tricks, and canaries are best known for filling a room with song.

A new pet bird will require a cage, gravel for the cage bottom, food, a cage cover, and toys with which to play. Since different types of birds eat different foods, consult a local pet shop for feeding instructions.

To keep the bird happy and healthy, keep the cage out of drafts, and cover it after 8:00 p.m. so that the bird can sleep without being disturbed.

VELOCITY MARKET

3 LOCATIONS!

- PIKEVILLE • ZEBULON
- BETSY LAYNE

OPEN 7 DAYS A WEEK
8 A.M. TO 11 P.M.

FISCHER'S BONELESS
FESTIVAL HAMS
\$1.79
Lb.



- PRICES EFFECTIVE WED., DEC. 17 THRU SUN., DEC. 21.
- WE RESERVE THE RIGHT TO LIMIT QUANTITIES.
- WE ARE NOT RESPONSIBLE FOR PRINTER'S ERRORS.

Velocity Market
And Our Employees
Wish You All A
Merry Christmas

KEEBLER 12-OZ. VANILLA WAFERS 99¢

KRAFT 7-OZ. MARSHMALLOW CREME 2/\$1

FLAV-O-RICH ICE CREAM SANDWICHES \$1.19 12-Ct. Box

QUARTER PORK LOINS \$1.09
Lb.

LEAN GROUND CHUCK \$1.59 Lb.

SIRLOIN TIP ROAST \$2.19 Lb.

ARMOUR'S 2-LB. BACON \$2.69 Pkg.

FISCHER'S REG. OR BEEF BOLOGNA \$1.39 1-Lb. Pkg.

MARTHA WHITE SELF-RISING MEAL \$1.09
5-Lb. Bag

MARTHA WHITE 15½-OZ. SPUD FLAKES 79¢

JUMBO ROLL BOUNTY TOWELS 79¢

HEAVY DUTY 75' REYNOLDS WRAP 89¢

BIRDS EYE COOL WHIP 69¢
8-Oz. Bowl

MARTHA WHITE SELF-RISING FLOUR 89¢
5-Lb. Bag




CLOROX BLEACH 79¢
Gallon Bottle

CELERY 69¢ STALK

RED GRAPES 69¢ Lb.

TANGERINES 2 \$1.19 Doz. 210 Size

PHILADELPHIA 8-OZ. CREAM CHEESE 79¢

MARTHA WHITE 7½-OZ. MACARONI & CHEESE 3/\$1

38-OZ. BTL. WESSON OIL \$1.89

MRS. SMITHS 2-CT. PIE SHELLS 79¢

SWANSON'S CHICKEN BROTH 3/89¢ 303 Cans

★ FREE HAMILTON BEACH APPLIANCES

BETSY LAYNE & ZEBULON STORES ONLY—COME IN AND SEE US FOR DETAILS

VELOCITY MARKET

CHECK OUR STORE MARQUEE FOR DAILY FOOD SPECIALS!

Redistricting Delay Seen

Problems with certification of the 1980 Census are likely to cause a delay in redistricting the state's legislative districts until after the 1982 General Assembly meets.

Complete figures used to determine how the districts are to be laid out have not been received by the state, said Joyce Honaker, a researcher with the state Legislative Research Commission. As a result of a federal lawsuit filed in Detroit the figures could be delayed as much as 18 months, she said.

Average Annual Pay Figures Are Released

Average annual pay of workers covered by state and federal unemployment insurance programs was \$13,137 in 1979, an increase of 8.1 percent over 1978, according to preliminary data published by the U.S. Department of Labor's Bureau of Labor Statistics.

The preliminary data for 1979 were compiled from the records of unemployment insurance programs. The data cover states as well as Standard Metropolitan Statistical Areas.

Average annual pay was computed by dividing total annual payrolls of employers by average monthly employment. The figures approximate the average annual earnings paid to employees in various geographic areas.

Average annual pay varied considerably by state. The average pay was highest in Alaska (\$20,973) and the District of Columbia (\$17,053), where pay figures were 59.6 percent and 29.8 percent, respectively, above the national average. Mississippi (\$10,410) and South Dakota (\$10,176) were the states with the lowest by the industrial and occupational mix of their respective economies as well as differences in basic pay levels of workers.

Wyoming and Louisiana showed the highest increases at 11.5 percent and 10.1 percent, respectively. The average pay in these states reflected the high wages and rising employment in energy exploration, production, and related industries.

Average annual pay in Kentucky is \$12,276.

Although bothersome to state officials charged with the mechanics of the redistricting process, Honaker said the delay should not cause any legal or civil problems.

She said the court delay will probably keep any redistricting from being done until after the 1981 election and probably not until 1986.

That's not unusual though, Honaker said. The 1970 redistricting was not done until 1975.

"It (the redistricting) may bother people," she said, "but I can't see where it will cause any real problems."

"Only in an isolated case, such as Eastern Kentucky (where an expected increase in population may grant them additional representation) where one vote could make the difference (in the legislature), could it cause a problem," Honaker said.

The district system—set up on the premise one man one vote—decides by population figures where district boundaries are to be drawn. The state has 38 senatorial districts and 100 House of Representatives districts.

An ideal district size is arrived at by taking the current census total for the state and dividing it by the number of senate seats and representative seats in the state legislature.

The 1970 census showed Kentucky's population to be 3,220,711. The ideal district for the state House of Representatives should have exactly 32,207 residents to satisfy federal court decisions, Honaker said.

Likewise, the Senate would have districts of 84,755 residents. The need to conform districts to the exact population figures results in split counties.

Based on the 1970 census the state legislative districts deviated less than 6 percent from the ideal, she said. That is 3 percent more or less than the ideal figure, she added. The federal ideal deviation is zero.

On the federal level Kentucky's present number of senators and representatives seems to be secure, Honaker said. Those states in the Northeast may see a marked population decline and Southern states a sizable increase. This will affect their congressional representation, she said.

Early census figures indicate a shift in Kentucky's population away from northern cities like Covington and also the Louisville metropolitan area.

The latest preliminary census figures for Kentucky show the state has 3,642,143 residents.

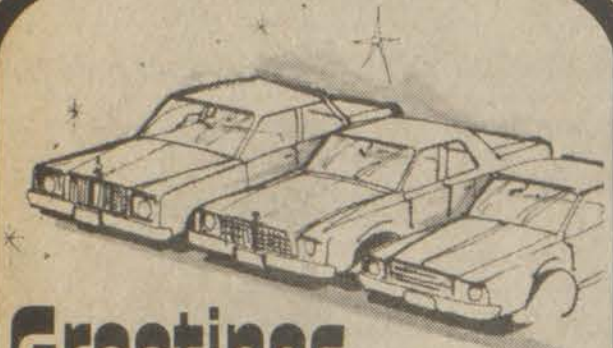
That would increase the size of the representative districts to 36,421 and the senate districts to 95,846 residents although any change is doubtful before 1982, Honaker said.

O Holy Night



Wishing you joy!

ARNOLD TURNER
COUNTY ATTORNEY



Greetings of the Season

We've been riding high on the great friends we've made throughout the year! Thanks and Merry Christmas to all!



TOWN & COUNTRY
FORD-LINCOLN-MERCURY
Lancer-Water Gap Road

Joyous Noel

May the season bring you
and yours every happiness.
Merry Christmas to all!

LAFFERTY'S MIDWAY MOTORS
Allen

Happy Holidays

Evergreen, ever bright, are
the hopes and joys on
Christmas night.

CIRCUIT COURT CLERK
FRANK DeROSSETT
and STAFF

Good Tidings



Wishing you joys to remember, memories to treasure, and love
all around this Christmas!

FIRST COMMONWEALTH BANK
PRESTONSBURG
MARTIN BETSY LAYNE



MAY THE JOY AND PEACE
OF CHRISTMAS BE WITH
YOU TODAY AND ALWAYS

CARTER FUNERAL HOME
Prestonsburg

Hybrid Auto: Two Engines • Run Better Than One

General Electric has organized a team of leading automotive and technology firms from the United States, West Germany, and Japan to produce two advanced "hybrid" automobiles for the U.S. Department of Energy (DOE).

The experimental vehicles will have both a gasoline engine and an electric motor under the hood. They will run part of the time on gasoline, part of the time on batteries, and—when needed—on both simultaneously.

The GE Research and Development Center, Schenectady, N.Y., is prime contractor for the \$8 million, 30-month project, which will see construction of a pair of four-door sedans seating five adults.

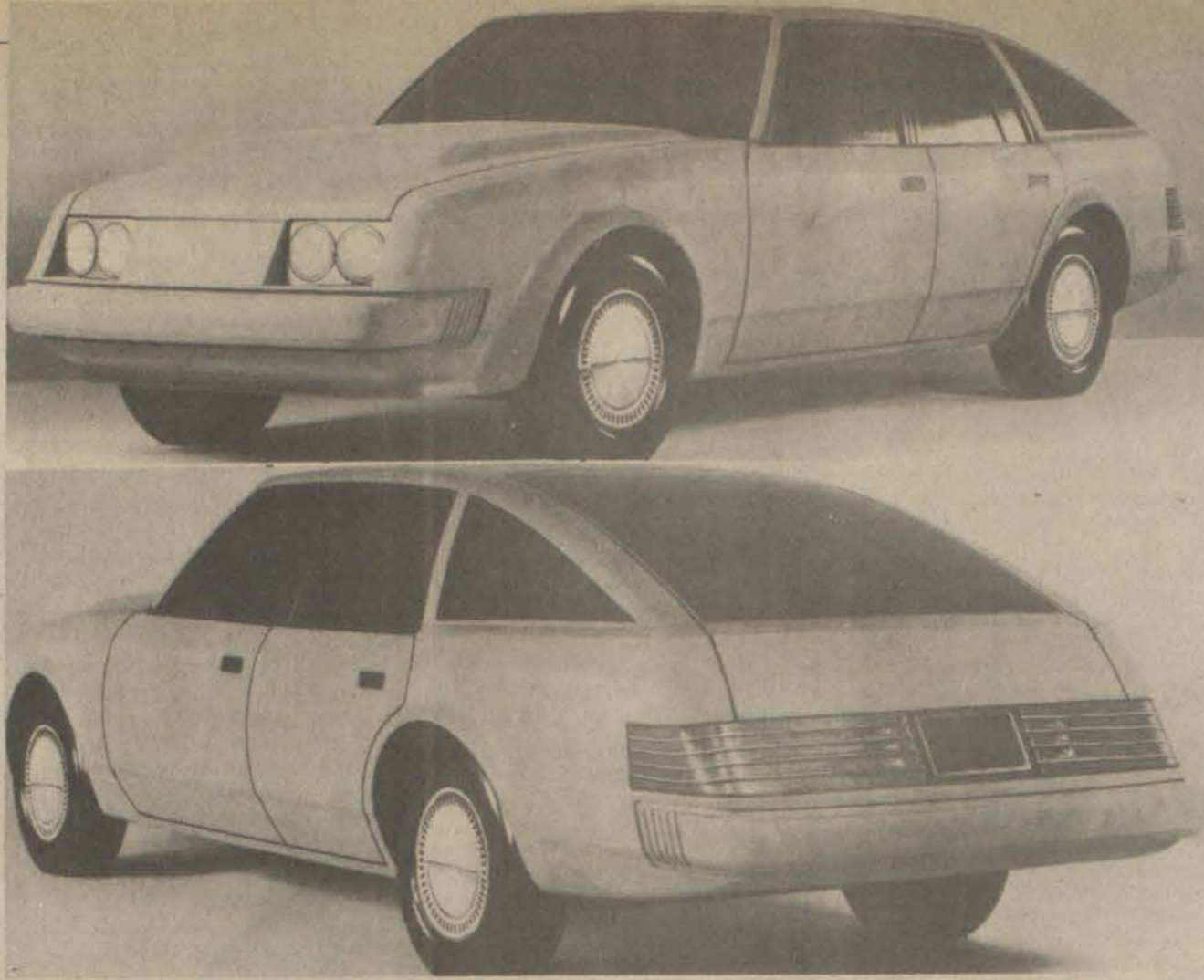
This contract is part of an overall DOE program aimed at stimulating commercialization of electric and hybrid vehicles as a means of reducing U.S. petroleum consumption. GE's hybrid design, for example, is expected to consume from 40 percent to 55 percent less petroleum than a conventional car of similar size over an 11,000-mile annual driving mission.

GE will provide expertise on the electric propulsion motor, the electronic controls for the motor, and the microcomputer controls for the entire hybrid system. Last year, the company delivered to DOE the Electric Test Vehicle-1, the nation's most advanced experimental electric vehicle.

Daihatsu Motor Co. Ltd., Japan's leading manufacturer of battery-powered vehicles, will serve as a consultant on the project. The Japanese company has built more than 4,000 electric and hybrid vehicles since 1965.

"Thanks to its dual drive system, the hybrid automobile is a promising approach to helping the U.S. meet its transportation requirements in the potentially fuel-short years that lie ahead," says Dr. Roland W. Schmitt, GE vice president for corporate research and development.

"The hybrid car is designed to minimize trips to the gas station and maximize the use of the wall plug for the typical American driver," the GE executive points out. "Its major



advantage is that it burns less gasoline than conventional cars, but offers a much greater range than all-electric vehicles," he added.

The hybrid's 40-horsepower electric motor and 80-horsepower gasoline engine will operate separately or in parallel. The electric motor will primarily be used for speeds from zero to 30 mph and the gasoline engine for most highway driving. In situations where both the electric motor and the gasoline engine are needed, such as in passing, the load will automatically be shared. A microcomputer will control overall vehicle operation.

The selection of the GE Research and Development Center as prime contractor to build two hybrid vehicles followed a competitive, year-long, preliminary design study conducted by GE and three other firms.

The baseline vehicle selected by GE for this project is a mid-size, four-door sedan. It will utilize front-wheel drive, with the internal combustion engine and electric motor mounted longitudinally under the hood. The complete power train, including batteries, will be located in front of the firewall. In addition, the vehicle's exterior will be redesigned for improved aerodynamics.

Curb weight of the car is estimated to be about 3,950 pounds. The vehicle will be equipped with an automatic three-speed transmission. The car's ten batteries will have a total weight of 770 pounds, and will have a life expectancy of approximately 800 recharge cycles. The battery pack may be recharged by regenerative braking, by the gasoline engine when it is in operation, and by wall-plug electricity.

Although the hybrid will weigh about 800 pounds more than its conventional counterpart, its dual propulsion system will require 5 percent less total energy.

GE engineers estimate that the experimental hybrid auto will accelerate from zero to 50 mph in 12 seconds and will look, perform, and handle like conventional vehicles that will be marketed in the mid-1980s. Its design is planned to be suitable for mass production in the mid-1980s at a consumer price of about \$7,600 (1978 dollars).

Pharmacy Footnotes



by HAROLD COOLEY

Americans on the average, are well fed. They are extremely so in comparison with people of many other nations. It has been estimated, for example, that approximately one hundred million persons have died in China directly from starvation during the past century. Also, 70 per cent of the people in the world are undernourished to some degree. Although Americans in general are well fed, studies indicate that some of the undernourished people of the world live in the United States. Certainly the procession of foodstuff to the hungry of our country should be of no small concern.

Our being well fed doesn't necessarily mean we are healthy. Often we have a need for medication, whether over the counter or prescription. At COOLEY APOTHECARY, INC. we can provide you with all of the medication you might need, and we do it responsibly. We keep up on developments in pharmaceutical research and pass our knowledge on to you. For expert advice see us at 2 Town Center Bldg. 886-8106. Mon.-Fri. 9-5:30; Sat. 9-5.

HANDY HINT:

A clear plastic bag will keep your food chopper clean and always ready for use.

	SUPERIOR SPECIAL! SELECTO BONELESS HAMS 12-14 Lbs. \$1.99 Lb.	SUPERIOR SPECIAL! CRANBERRIES 16-Oz. Pkg. 79¢	SUPERIOR SPECIAL! JUICY FLORIDA ORANGES DOZ. 99¢	
--	---	--	--	--

• PRICES IN EFFECT THURS., DEC. 18 THRU WED., DEC. 24
 • WE RESERVE THE RIGHT TO LIMIT QUANTITIES.

FISCHER'S SMOKED PORK CHOPS
\$2.09 Lb.

ARMOUR SPEEDY-CUT HAMS
\$2.19 Lb.

FISCHER'S FESTIVAL HAMS
 12-15 Lbs. **\$1.99** Lb.

LAY'S BLUE LABEL HAMS
 14-17 Lbs. **\$1.39** Lb.

WEBBER'S SAUSAGE
 2-Lb. Roll **\$3.15**
 1-Lb. Roll \$1.59

RED OR YELLOW DELICIOUS
APPLES
 3-Lb. Bag **79¢**

JUMBO STALK CELERY
59¢

TANGELOS
 DOZ. **99¢**

SCHOOL DAYS 303 SIZE WHOLE KERNEL CORN 3/\$1
 No. 2 Can
DEL MONTE CHUNK, SLICED OR CRUSHED PINEAPPLE 69¢
ARGO 303 CANS PEAS 3/\$1
DEL MONTE PEAR HALVES 2/\$1.19

KRAFT ORANGE JUICE \$1.39
 Half Gallon
OCEAN SPRAY WHOLE CRANBERRY SAUCE 59¢
 303 CANS
SHASTA 2-LITRE DRINKS 99¢
HY-TOP 3-LB. CAN SHORTENING \$1.79

MARTHA WHITE PLAIN OR SELF-RISING WHITE CORN MEAL 5-LB. BAG \$1.19
MARTHA WHITE Plain or Self-Rising FLOUR 5-LB. BAG 99¢
BORDEN 22-OZ. CREMORA \$2.19
VAN CAMP'S PORK & BEANS 16-Oz. Cans 3/\$1.89

JOE D. WEDDINGTON
 REAL ESTATE
886-9411

Subscription Rates Per Year

In Floyd County, \$6.75
 Elsewhere in Kentucky, \$8.
 Outside Kentucky, \$10.

Please note expiration date opposite your name on wrapper or on your copy of The Times. Because of increased mailing costs, notices of subscription expiration are no longer mailed to subscribers.

YOU BE THE JUDGE

JUDGE

HOW MUCH CAN WE HELP YOU?

HALL & CLARK

- FLOOD INSURANCE
- HOMEOWNERS INSURANCE
- AUTOMOBILE INSURANCE
- LIFE INSURANCE

INSURANCE AGENCY INC. Phone **886-2318**
 11 S. LAKE DRIVE
 PRESTONSBURG, KENTUCKY 41653

WE WILL BE CLOSED CHRISTMAS DAY!

HAMILTON'S SUPERIOR FOOD MARKET

LOCATED ON JONES FORK BETWEEN LACKEY AND MOUSIE • PHONE 946-2559

New Hours: 8 a.m.-7 p.m. Mon.-Sat.; 9 a.m.-6 p.m. Sun.

HAPPY HOLIDAYS



Good friends, warm fires, words of love exchanging! Bring near to the happy heart Christmastime's true meaning!

SEASON'S GREETINGS TO OUR FRIENDS

THE BANK *Bj* JOSEPHINE

Prestonsburg	Allen
Garrett	Harold Wheelwright



Season's brightest good wishes to all!

PIGGLY WIGGLY

Prestonsburg, Ky.

Extension News

By JOHN E. SPARKS
County Extension Agent
for Agriculture
CHRISTMAS TREES

In December, Christmas trees become a part of the landscape. Many of us will be looking for the perfect tree for our homes. While only a few types of trees are sold, the number of choices becomes awesome, when the tree, whether living or cut, grade, height and density are considered.

Normally in selecting a tree, the first consideration is what tree do you associate with Christmas. Scotch Pine, Eastern Red Cedar and Balsam Fir are the Christmas trees most often encountered. Balsam Fir has long been considered the standard Christmas tree, but is not the biggest seller because of expense and regional differences in tradition.

Once you've decided on the tree, freshness is the most important factor in selecting a cut tree. You can check for freshness by the needles and their retention. If the needles break when you bend them gently, the tree is too dry. The needles should not drop off when the tree is lifted off the ground and brought down sharply on the stump end.

In order to maintain freshness, a few inches of the stump of the tree should be sawed off. Then place the stump in water and be sure to keep the cut covered with water. When the tree is brought into the house it should be kept in a cool part of the room away from heat sources and return-air vents. Remove the tree from the home after Christmas as soon as it shows signs of drying out.

A way to avoid the freshness problem is to buy a living tree. Many different types of trees are available for this purpose. The tree selected should be one that does well in Kentucky. Some favorites that fulfill this requirement are Colorado Spruce, Norway Spruce, Austrian Pine, White Pine and Canadian Hemlock. These trees are normally found either potted or ball and burlap (B&B). A smaller tree is preferred because the larger ones are very heavy. If the tree is B&B, be sure the root ball is not broken and loose in relation to the top. The ball should be large enough to ensure good survival. The American Nurseryman has put out standards for B&B minimum size on coniferous

stock as follows: for a 2-3 foot tree the root ball should be 12 inches in diameter; for 3-4 foot, 14 inches; for 4-5 foot, 16 inches; and for 5-6 foot, 20 inches.

The living tree shouldn't be bought until mid-December and should be kept in a cool garage or outdoors where the minimum temperature is above 20°F. A live tree shouldn't be kept in the home any longer than ten days. It should then be placed in a cool environment before being placed outdoors. If you have a place ready for planting, you may plant in a protected area. Protecting the tree with a burlap or canvas screen will reduce moisture loss. Mulching the planting site will also be helpful.

If the plant cannot be planted immediately, place the tree in a protected area and insulate the root ball in some manner. This may be accomplished by stacking hay bales, around it, putting mulch or leaves around it or temporarily planting in the compost heap.

By FRANCES H. PITTS
County Extension Agent
for Home Economics
GREENERY WORKSHOP HELD

Two fresh green wreath workshops were held last week with Homemakers learning the art of making and decorating Christmas wreaths from native green materials. Homemakers attending the morning workshop were Sharon Sparr, Janet Cottrell, Cheryl Leslie, Joyce Everly, Patsy Brown, Brenda Allen and Leatha Kendrick. Attending the afternoon session were Virginia Goble, Garnet Fairchild, Christine Spradlin, Arietta Hall, Barbara Burchett, Lois Crum and Becky Short.

The workshop was conducted by Extension Agents Kathy Bullen, of Martin county, and Frances Pitts, of Floyd.

Make It a Time for Joy!

The Christmas season is a time of joy and sharing. But for many Kentuckians the holidays are also a time of sadness.

In 13 fatal accidents during last year's Christmas season in Kentucky, 18 people died, according to Department of Transportation statistics.

From Dec. 21 to Dec. 25, 1979, 1,899 accidents occurred in Kentucky resulting in 332 injuries.

Many holiday accidents can be avoided if people are careful and plan ahead for trips, said Bennie Maffet, transportation safety coordinator.

Checking the mechanical condition of the vehicle is the first step a motorist should take before a trip, Maffet said. Tires, brakes, lights and the exhaust system should all be in good working order.

The weather is the next consideration for a driver.

"Careful driving is more important with the changeable weather conditions," Maffet said. Drivers should leave early enough in bad weather to drive slowly and safely to their destination. Maffet stressed that seat belts should be worn at all times.

Most of all, Maffet emphasized, motorists should drive defensively.

"Even though we emphasize not to drink and drive, there will be some who will," he said. Motorists should watch other vehicles for weaving, slow starts and improper signaling.

For those hosting parties this holiday season, Maffet suggests toning down parties before guests are about to leave by serving food and non-alcoholic beverages. "The host is responsible for the condition of the guests when they leave," he said. If a guest is not able to drive, the host should make arrangements for transportation home or accommodations for the night, Maffet advised.

"Let's keep this a joyful season," Maffet said. "Make this a time of celebration by taking every precaution to see that an accident doesn't occur in your family."

Rejoice



... in the glow of a warm and loving Christmas season.

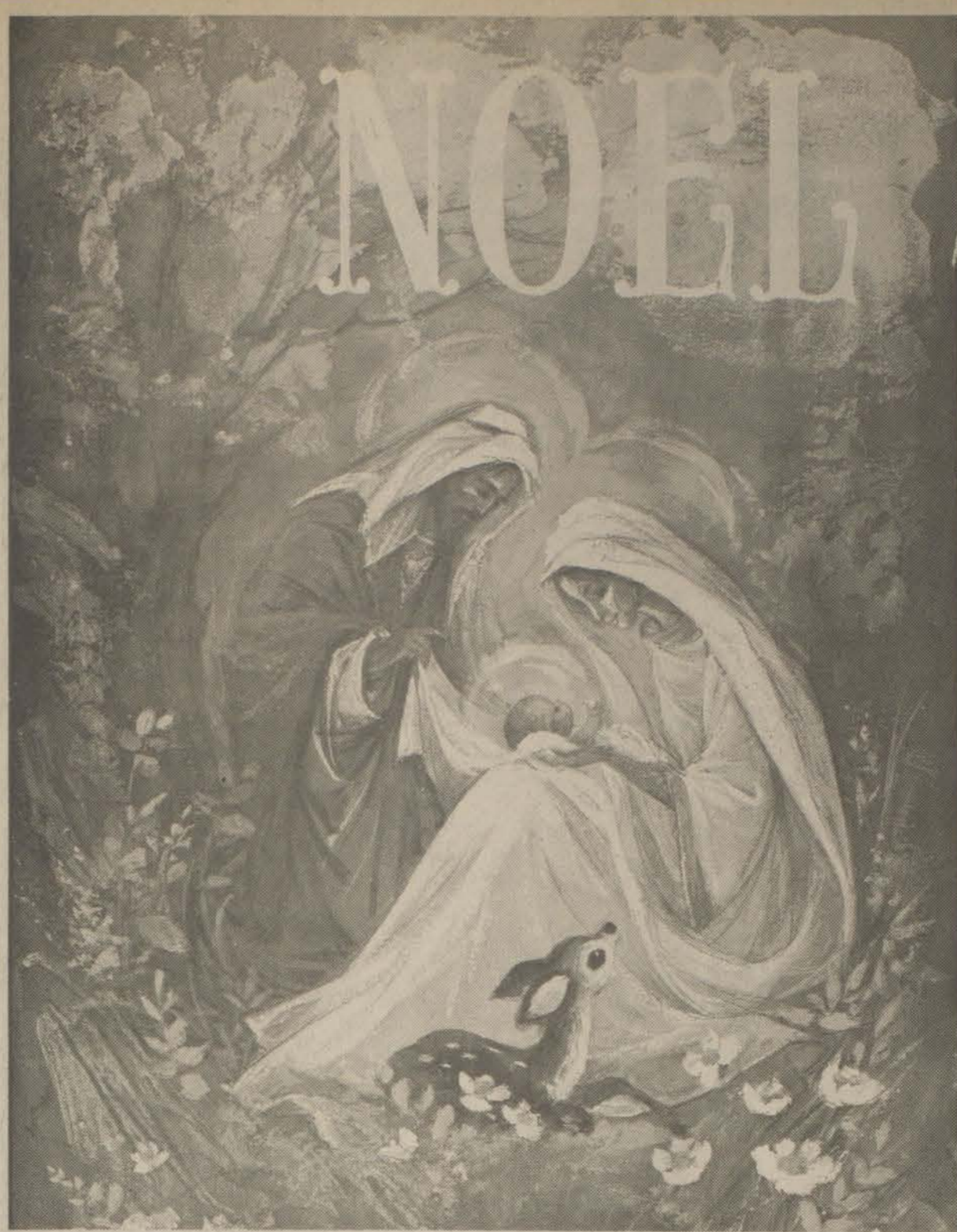
HALL & CLARK
INSURANCE AGENCY
PRESTONSBURG

season's best



We wish you a season of beautiful Christmas moments... lasting memories to treasure always.

Allen Lumber Co.
Allen, Ky.



A Holy Christmas to Everyone. We hope that remembering the true meaning of Christmas will bring you Peace and Happiness as you rejoice in the Birth of Our Saviour.

HALL FUNERAL HOME
MARTIN, KY.

Greetings



Happy Holiday Wishes to all our customers. We enjoy doing business with you and we hope that we can continue to serve you throughout the years to come.

PRICE'S PIC-PAC SUPERMARKET
PRESTONSBURG — MARTIN



MAKE YOUR SUNDRY STORE YOUR CHRISTMAS GIFT BUYING HEADQUARTERS!!

<p>4-ROLL PKG. CHRISTMAS WRAPPING PAPER BY CARRINGTON 66¢ LIMIT 1 PER CUSTOMER</p>	<p>4-DAYS ONLY! FRI. THRU MON. 2 POUND BOX Scratt's YELLOW ROSES ASSORTED CHOCOLATES \$2.99 LIMIT 1 PER CUSTOMER</p>	<p>4 DAYS ONLY! FRI. THRU MON. PKG. OF 10 CONTAC GOLD RELIEF CAPSULES 99¢ LIMIT 1 PER CUSTOMER</p>	<p>4 DAYS ONLY! FRI. THRU MON. C110-24 OR C135-24 KODAK KODACOLOR II FILM YOUR CHOICE \$1.99 LIMIT 1 PER CUSTOMER</p>	<p>30 INCH JUMBO ROLL CHRISTMAS WRAPPING PAPER 88¢ BY CARRINGTON LIMIT 1 PER CUSTOMER</p>
<p>4 DAYS ONLY! FRI. THRU MON. 10 COLOR EXPOSURES KODAK INSTANT PRINT FILM #PR-10 \$6.49 LIMIT 1 PER CUSTOMER</p>	<p>4 DAYS ONLY! FRI. THRU MON. 1 OZ. SIZE JONTUE SPRAY COLOGNE \$4.99 LIMIT 1 PER CUSTOMER</p>	<p>4 DAYS ONLY! FRI. THRU MON. 2 OZ. SPRAY Babe \$4.99 LIMIT 1 PER CUSTOMER</p>	<p>4 DAYS ONLY! FRI. THRU MON. POLAROID THE BUTTO. INSTANT CAMERA OUR PRICE! \$21.99 LESS REBATE \$2.00 NET PRICE \$19.99 AFTER REBATE SEE DETAILS AT THE STORE! LIMIT 1 PER CUSTOMER</p>	<p>4 DAYS ONLY! FRI. THRU MON. 10 COLOR EXPOSURE POLAROID TIME ZERO SX-70 FILM \$5.99 LIMIT 1 PER CUSTOMER</p>

VALUABLE COUPON
COUPON GOOD FOR **25¢ CASH** WITH YOUR PURCHASE OF ANY **PHOTOFINISHING** AT YOUR SUNDRY STORE!
EXPIRES 12/26/80
LIMIT 1 PER CUSTOMER

SHOP YOUR SUNDRY STORE THIS CHRISTMAS FOR THE BEST SELECTION OF CANDIES & COOKIES IN TOWN!!

- IMPORTED CHOCOLATES
- CANDY CANES
- CHRISTMAS COOKIES
- ASST'D HARD CANDIES
- PEANUT CRUNCH
- CHOCOLATE CHERRIES

Plus Much, Much More!!!

VALUABLE COUPON
COUPON GOOD FOR **25¢ CASH** WITH YOUR PURCHASE OF ANY **BOX OR PACKAGE CHRISTMAS TREE ORNAMENTS** AT YOUR SUNDRY STORE!
EXPIRES 12/26/80
LIMIT 1 PER CUSTOMER

VALUABLE COUPON
MIRRO BUTTERITE AUTOMATIC **CORN POPPER** WITH THIS COUPON!
\$14.88
EXPIRES 12/26/80
LIMIT 1 PER CUSTOMER

CHRISTMAS SHOPPING CHECKLIST!!

- ✓CHRISTMAS TREES
- ✓BOWS & RIBBONS
- ✓TAGS & SEALS
- ✓ORNAMENTS
- ✓ICICLES
- ✓REPLACEMENT BULBS
- ✓EXTENSION CORDS
- ✓SMALL APPLIANCES
- ✓PERSONAL CARE APPLIANCES
- ✓CHRISTMAS PAPER
- ✓CHRISTMAS CARDS
- ✓LIGHT SETS
- ✓CHRISTMAS WREATHS
- ✓GARLAND
- ✓CANDOLIERS
- ✓TREE TOPS
- ✓CAMERA'S & FILM
- ✓LADIES' & MEN'S GIFT SETS

VALUABLE COUPON
COUPON GOOD FOR **25¢ CASH** WITH YOUR PURCHASE OF ANY **BOXED CHRISTMAS CARDS!** AT YOUR SUNDRY STORE!
EXPIRES 12/26/80
LIMIT 1 PER CUSTOMER

VALUABLE COUPON
WESTBEND 2-10 CUP AUTOMATIC **COFFEE MAKER** MAKES TEA, COCOA, SOUPS AND OTHER INSTANTS TOO! WITH THIS COUPON!
\$18.99
EXPIRES 12/26/80
LIMIT 1 PER CUSTOMER

SHOP YOUR SUNDRY STORE FOR THE LARGEST SELECTION OF LADIES' & MEN'S GIFT SETS IN TOWN!

AQUA VELVA MEN'S GIFT SETS AT LOW, EVERYDAY SUNDRY STORE DISCOUNT PRICES!
QUANTITIES LIMITED-AVAILABLE ONLY WHILE SUPPLY LASTS!

JOVAN COLOGNES
NIGHT BLOOMING JASMINE
MUSK OIL COLOGNE AT LOW, EVERYDAY SUNDRY STORE PRICES!

VALUABLE COUPON
StyleMaster TINY TURBO 1200 **HAIR STYLER/DRYER** 1200 WATTS OF POWER! WITH THIS COUPON!
\$6.88
EXPIRES 12/26/80
LIMIT 1 PER CUSTOMER

VALUABLE COUPON
DAZEY **ELECTRIC CAN OPENER** WITH THIS COUPON!
\$7.99
EXPIRES 12/26/80
LIMIT 1 PER CUSTOMER

FOR THE LADIES

- JONTUE
- CACHET
- AVIANCE
- TIGRESS
- BABE
- ENJOLI
- INTIMATE
- AMBUSH

FOR THE MEN

- CHAZ
- JOVAN MUSK
- CELLINI
- BRUT
- BRAVORA
- ENGLISH LEATHER
- MATCHABELLI
- SKIN BRACER

VALUABLE COUPON
SUNBEAM **SHAVEMASTER SHAVER** FEATURES HOLES FOR STUBBY HAIRS & SLOTS FOR SOFT FLEXIBLE HAIRS+THIN HEAD WITH THIS COUPON!
\$18.88
EXPIRES 12/26/80
LIMIT 1 PER CUSTOMER

VALUABLE COUPON
FROST & TIP **HAIR FROSTING KIT** WITH THIS COUPON!
\$4.99
EXPIRES 12/26/80
LIMIT 2 PER CUSTOMER

VALUABLE COUPON
PKG. OF 25 **ALKA SELTZER** PAIN RELIEVER AND ANTACID WITH THIS COUPON!
99¢
EXPIRES 12/26/80
LIMIT 2 PER CUSTOMER

VALUABLE COUPON
6 OZ. SIZE **ASPERCREME** ARTHRITIC PAIN MEDICATION WITH THIS COUPON!
\$1.99
EXPIRES 12/26/80
LIMIT 2 PER CUSTOMER

VALUABLE COUPON
BOX OF 24 **SINE-AID** SINUS PAIN RELIEVER WITH THIS COUPON!
\$1.99
EXPIRES 12/26/80
LIMIT 2 PER CUSTOMER

VALUABLE COUPON
MISS CLAIROL **SHAMPOO-IN** HAIR COLOR WITH THIS COUPON!
\$2.59
EXPIRES 12/26/80
LIMIT 2 PER CUSTOMER

VALUABLE COUPON
BOX OF 100 **EXTRA-STRENGTH TYLENOL** TABLETS WITH THIS COUPON!
\$2.89
EXPIRES 12/26/80
LIMIT 2 PER CUSTOMER

VALUABLE COUPON
BOX OF 84 & 12 FREE **POLIDENT** DENTURE CLEANSING TABLETS WITH THIS COUPON!
\$2.29
EXPIRES 12/26/80
LIMIT 2 PER CUSTOMER

VALUABLE COUPON
16 OZ. SIZE **REVLON FLEX** SHAMPOO OR CONDITIONER YOUR CHOICE! WITH THIS COUPON!
\$1.79
EXPIRES 12/26/80
LIMIT 2 PER CUSTOMER

VALUABLE COUPON
LARGE CAN **CAPT. BLACK GOLD** WITH THIS COUPON!
\$5.99 Ea. Can
EXPIRES 12/26/80
LIMIT 2 PER CUSTOMER

VALUABLE COUPON
COUPON GOOD FOR **10% OFF** YOUR PURCHASE OF ANY **PIPE OR PIPE ACCESSORY** EXPIRES 12/26/80
LIMIT 2 PER CUSTOMER




Joyous Noel

It's time to greet all our friends...and wish them the very best — good health, good friends and good times! Thank you for your patronage.

HATTON INSURANCE SERVICE
Prestonsburg, Ky.

NOEL

Many gifts are wished for you: good health, good cheer, good friends and family near.



A.W. Cox Dept. Store
PRESTONSBURG


SEASON'S GREETINGS

A very special holiday greeting to all of our special friends and patrons who have visited us this past year. We have enjoyed serving you.



CLYDE BURCHETT, Jeweler
Prestonsburg


YULETIDE CHEER



Hearts are mellow, spirits light, at this Season of Good Fellowship!

Earl Castle's Jewelry
Court St. Prestonsburg


NOEL



Gifts to give and to receive at Christmas: kind words and gentle smiles.

CATO'S
COURT ST., PRESTONSBURG

HAPPY YULETIDE

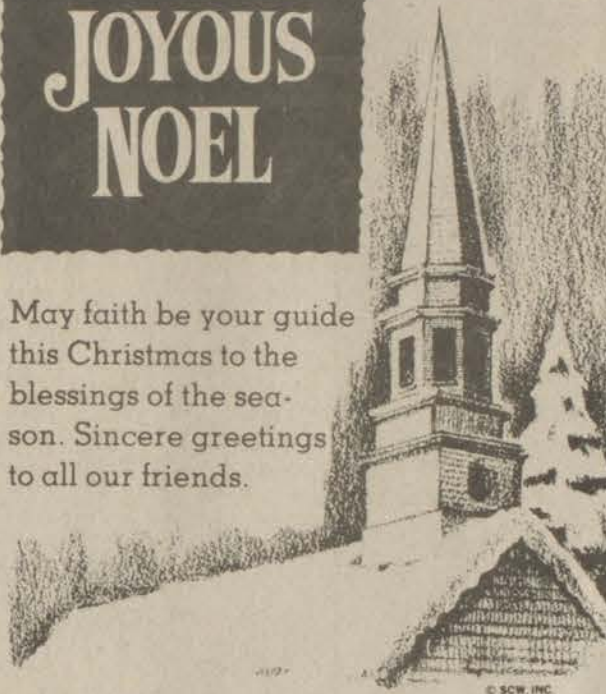


Wishing you bright holidays as Christmas lights up the world!

B. F. Casual Shop
Prestonsburg

JOYOUS NOEL

May faith be your guide this Christmas to the blessings of the season. Sincere greetings to all our friends.



JAMES A. DUFF
Vice-Chairman
Floyd County Board of Education

CHRISTMAS CHEER

Deck the halls... carol and rejoice... it's Christmas!



DAIRY QUEEN
PRESTONSBURG


Happy Holidays



The peace of Christmas touches even the most humble of His creatures.

D & D Car Wash
Prestonsburg

season's best




Wishing you a happy Christmas.

JAMES ALLEN
COMMONWEALTH ATTORNEY

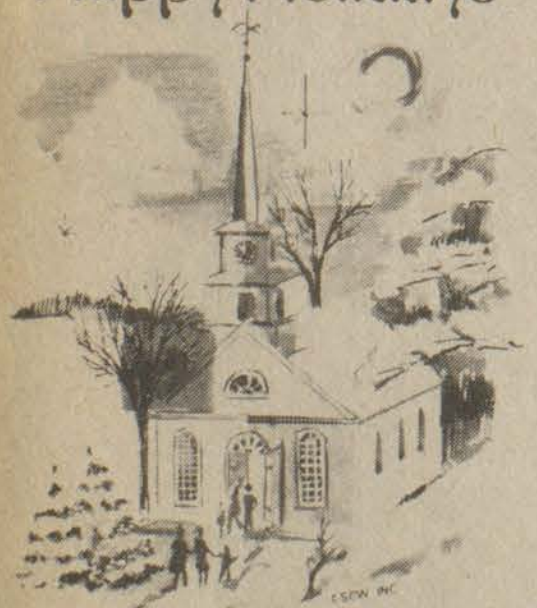
season's best

May the shining lights of Christmas warm all hearts!



F.S. Van Hoose & Co.
Prestonsburg, Ky.

Happy Holidays



Peace to all men of good will.

KORNER DRUG
Court St., Prestonsburg

CHRISTMAS JOY

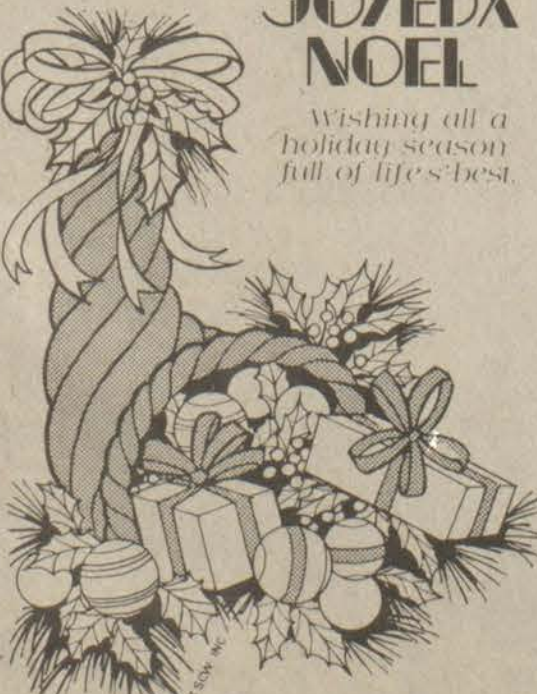


Rejoice in the beauty of this Holy Season.

Willie Hicks Body Shop
Prestonsburg


JOYEUX NOEL

Wishing all a holiday season full of life's best.



Lad 'n Lassie Shop
Prestonsburg—Martin

Glad Tidings



Awaken again to the joys of Christmastime!

Floyd Auto Parts & Tires Plus
Prestonsburg

Season's Greetings



From All of Us at

KEN ISAACS

PONTIAC-CADILLAC-OLDSMOBILE-JEEP

South Lake Drive Prestonsburg

HECK'S

OPEN DAILY 9:00 TO 10:00
SUNDAY 12-8

NOT RESPONSIBLE
FOR TYPOGRAPHICAL
ERRORS

WE RESERVE THE RIGHT
TO LIMIT QUANTITIES.

TOYS

30%

OFF

HECK'S REGULAR PRICE

DECORATIONS
50% OFF
HECK'S
REGULAR
PRICE

DOES NOT INCLUDE
SLEDS, WHEEL GOODS
BICYCLES
TRICYCLES OR
WAGONS

719 University Drive Prestonsburg, Ky.



NO EXCHANGES OR REFUNDS WITHOUT SALES RECEIPT





Season's Greetings

Christmas is the sound of bells, the laughter of children, the glow of candles and the scent of pine. Christmas is the joy of families and the happiness of friends. We hope your Christmas has love, warmth and laughter.

MARTIN'S BESTWAY FOOD STORE
McDowell

Good Tidings

May Christmas lighten your hearts and brighten your spirits!

Wright Bros., Jewelers
Court St., Prestonsburg

Best Wishes

From far and near, warmest greetings to all!

ART'S AUTO SALES
So. Lake Dr., Prestonsburg

NOEL

A very special holiday greeting to all of our special friends and patrons who have visited us this past year. We have enjoyed serving you.

COLLINS GULF SERVICE
Prestonsburg

Best Wishes

Here's hoping you have a jolly good holiday, and a sleighful of wonderful gifts to boot!

COOLEY APOTHECARY
Prestonsburg

Glad Tidings

All joy and happiness be yours this Christmas!

GREG STUMBO
STATE REPRESENTATIVE

JOYOUS YULE

We wish you the best of the Holiday Season with a Christmas filled with love and peace.

FLOYD COUNTY TIMES EMPLOYEES

Greetings

It's our favorite time of year and one of the most enjoyable customs of the season is greeting our many good friends and patrons and wishing them the best that life has to offer. Merry Christmas to you all!

LITTLE BEAR MARKET
Allen, Ky.

Merriest Christmas...

Carts full of good wishes for you and your family this Christmas! We hope you have a wonderful holiday. Thanks for letting us serve you!

VELOCITY MARKET
Betsy Layne — Pikeville

SANTA'S ON HIS WAY

We've asked the jolly old elf to bring you all the gifts you've been wanting and the best Christmas ever!

WOOD'S GROCERY
Emma, Ky.

Merry Christmas to All

A holiday wish to everyone. We hope that your Christmas season will be healthy and happy. And remember, we are always here to serve you when you need us.

UNION BANKERS INSURANCE CO.
H. K. Milligan, District Manager

SALE • SALE • SALE

THIS IS THE SALE YOU'VE ASKED FOR—DON'T MISS IT!

EVERYTHING IN STORE

★ 1/3 OFF ★

MANY MANY ITEMS UP TO 1/2 OFF
SALE STARTS 6 P.M.—ENDS 10 P.M.
FRIDAY, DECEMBER 19

Gerry & Jerry's Shoes & Clothing
 U.S. 23 No., Prestonsburg • 886-3932



James Michael Lafferty celebrated his fifth birthday with a party at the home here of his grandparents, Mr. and Mrs. James W. Lafferty, Sr. Attending were his grandparents, his cousins, Ginger and Beth Howard, his father and stepmother, Mr. and Mrs. Donald Lafferty.



Mary Dawn Goble, daughter of Phillip and Diana Goble, celebrated her second birthday, November 27, at her home. She is the granddaughter of Mr. and Mrs. Isaac Goble and Mr. and Mrs. John C. Williams.

To Study In Dublin
 Rev. William Poole, pastor of the Floyd County Catholic Parish, will be leaving for a three-month sabbatical at the Marianella Pastoral Centre, Dublin, January 9. He will study theology, together with priests from Europe, Africa, Asia and Latin America. During Fr. Poole's absence, Fr. James Ryan will pastor the Catholic community here.

HERE FROM KNOTT COUNTY
 Judge John Chris Cornell was here this week from Hindman. While here, he met with Bill Pettrey to discuss obtaining chinquapin trees for planting in Knott county.

Subscription Rates Per Year

In Floyd County, \$6.75
 Elsewhere in Kentucky, \$8.
 Outside Kentucky, \$10.

Please note expiration date opposite your name on wrapper or on your copy of The Times. Because of increased mailing costs, notices of subscription expiration are no longer mailed to subscribers.

LOW DOWN PAYMENT AND LOW INTEREST

OWN ONE OF THESE HOMES FOR A \$3,000 TO \$6,000 DOWN PAYMENT, UNDER \$400 MONTHLY PAYMENT:

MOUNTAIN PARKWAY—STUMBO SUBDIVISION
 Two new 3-bedroom, energy-efficient homes. Landscaped lots. Qualifies for county bonding and Ky. Housing Corp. loans with low down payment to qualified buyers. Priced mid-40's.

DEADLINE FOR KY. HOUSING CORP. MONEY IS DEC. 31. YOU MUST APPLY NOW.

ACTION **ACTION PROPERTIES CORP.**
 Bill Gibson, Broker
 North Mayo Trail — Pikeville, Ky.
886-3804 — 886-9976
 Ron Lawson, Broker-Salesman Emma Lou Martin, Broker-Salesperson
 PHONE 886-9976 PHONE 874-2955

You Don't Need a Magic Formula to Make Money Grow!

Just regular deposits into a good, solid savings plan will do...one that offers the highest interest rates allowed by law. We have a number of plans to fill the bill...one's just right for you!

THE FIRST GUARANTY BANK
 Martin, Ky.

“Your Friendly Home-Owned Bank”
 Phone 285-9281 • Member FDIC

CETA Should Be Kept, Says Sec'y

Secretary of Labor Ray Marshall expressed alarm about a proposal by an advisory group to the incoming Reagan administration to phase out the Comprehensive Employment and Training Act (CETA) program.

The proposal, by a group headed by Mayor Pete Wilson of San Diego, is “an American tragedy in the making,” Secretary Marshall said in an address before the Ninth Annual Employment Policy Conference of the National Association of Counties in San Antonio.

“To cut CETA out of the American government is to make it more difficult for the poor and disadvantaged to participate in American society,” Marshall emphasized. “CETA is the best hope—maybe the last hope—of reaching people who fall further behind every day—but who will never disappear.”

Marshall explained that the Carter administration had pushed legislative changes to the CETA program that focus it more sharply on meeting the needs of the disadvantaged and long-term unemployed. “We realized that the CETA system had many problems. That's why we've worked so hard to improve the management, carefully target the program and develop a close working relationship with the private sector through the Private Sector Initiative Program.

“Setting up CETA was a struggle,” he told the county officials' organization. “Improving it was a struggle. And maintaining it now will be an even more difficult struggle.”

Marshall added, however, that “it is a struggle we can win, and it's a struggle we better win.”

In addition, Marshall declared, CETA “is a system that Americans can be justifiably proud of, both because of its success and because it fulfills this country's commitment to the goal of equal opportunity.”

This country needs a public employment and training program “if we are to improve productivity and achieve our national goals of stable prices and full employment,” Marshall said.

He called the proposal by Mayor Wilson's group a plan “based on myths and misconceptions.”

According to Marshall, CETA has been successful in helping large numbers “become self-sufficient

RON'S BARGAIN BARN
 MOUNTAIN PARKWAY • PRESTONSBURG • 886-1551

SLOPPY JOE SOFA SET

7-Pc. Suite BARGAIN PRICED \$399

PLUS 2000 EXTRA QUALITY STAMPS

dM FURNITURE
ALL-WOOD ROLL-TOP DESK

BARGAIN PRICED \$348

BARGAIN PRICED **5,000 FREE QUALITY STAMPS**

Microwave Oven With Auto-touch* Carousel* turntable, variable cooking control and temperature probe.

5-Pc. All-Wood Colonial Set

BARGAIN PRICED 199.00

2,000 EXTRA QUALITY STAMPS

Choose from maple or pine color finish. Oval table with one leaf and 4 chairs. Rich finish over select solids. 36" round table extends to 36"x48" oval. Legs assemble easily to table.

ORDINANCE NO. 11-80
GARBAGE DISPOSAL RATFS:
 Section One:
 Section Six (6) of Ordinance 830.1A, enacted April 5, 1962, is hereby deleted, and in lieu thereof said section should read as follows:
 “Section Six: That the changes for the Garbage Disposal and collection system shall be as follows:
 Four Dollars (\$4.00) per month for each single family dwelling;
 Four Dollars (\$4.00) per month for each family apartment.
 “Changes made for service to business or buildings, or office room or rooms, are to be determined by the City Administrator in charge of operation of the Garbage Disposal and collection system, and agreed upon by the person, firm or corporation receiving the service. In the event that the aforementioned agreement cannot be reached, then the City Council shall determine the amount to be charged.”

“Section Two:
 “All other provisions of Ordinance 830.1 and 830.1A, enacted April 5, 1962, with respect to the operation of garbage disposal systems hereby remain in effect as adopted and are incorporated herein the same as if all of the provisions of each respective ordinance were set out at length herein.”

HAROLD W. COOLEY
 Mayor

ATTEST:
SUE WEBB
 City Clerk

12-17-21.

BIG CHRISTMAS SALE

THE TOUCH-TRONIC 2001 MEMORY MACHINE.

Never before has a sewing machine this versatile made sewing so easy. Just touch the picture of any 27 stitch patterns, and you've got it; instantly. The Touch-Tronic memory remembers the programmed length and width, and can even give you a mirror image of the stitch pattern. There's a built-in needle threader guide, a push-button self-winding bobbin, and a Touch-Tronic buttonholer for the best buttonhole yet. Made in U.S.A.

MODEL 5127
 Seven different stitch patterns make any fabric easy to sew. Converts from flat bed to free arm. Built-in button holder. Just

Reg. \$249.00
Save 50.00
Sale \$199.00

MODEL 5102
 Built-in zig-zag stitch sews smoothly over stretch fabrics and elastics.

Big Savings ON SALE \$99

E-12 Attachment Set—provides crush-resistant vinyl hose with upper curved wand, two extension wands, 12" carpet tool, dusting brush, upholstery brush, crevice tool and wall and floor brush.

Reg. \$74.95
Save 25.95
Sale \$49.00

E-12B

Reg. \$129.95
Save 40.00
Sale \$89.95

LAY-A-WAY FOR CHRISTMAS
VISA & MASTER CARD WELCOME

OPEN NIGHTLY TILL 8 P.M. UNTIL CHRISTMAS

JANIE AND CLEO'S SEWING & DECORATING CENTER
 204 FIRST AVE., PRESTONSBURG, KY.

LOTS of CABIN or A-FRAME FOR SALE

CAVE RUN LAKE
 Buy this Fall and save money.
Phone 289-5994
LES COATNEY

11-26-41.

JUST ARRIVED!
 A LARGE SELECTION OF BARS, BAR STOOLS, GUN CABINETS, LAMPS, HUTCHES, LIVING ROOM TABLES, DISCO STEREOs, PANASONIC ELECTRONIC OVENS

TABLE & 4 CHAIRS

\$150 **\$98**

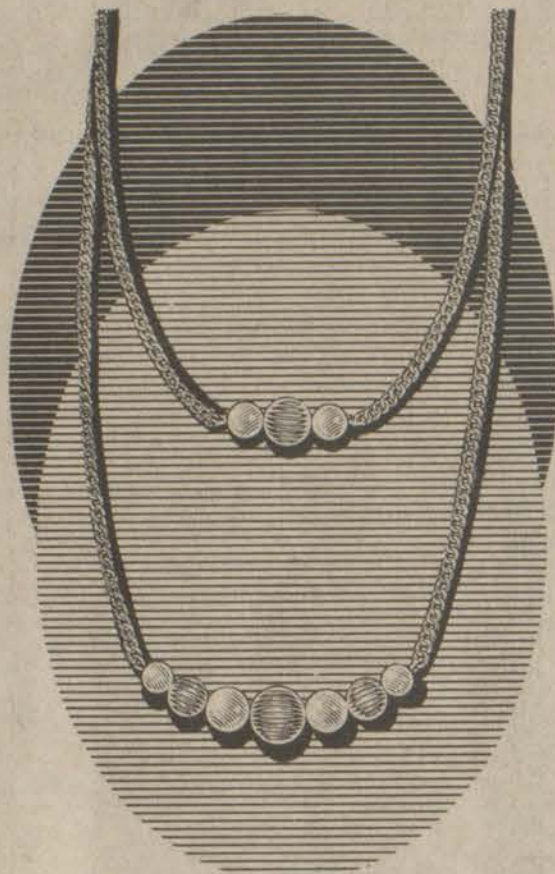
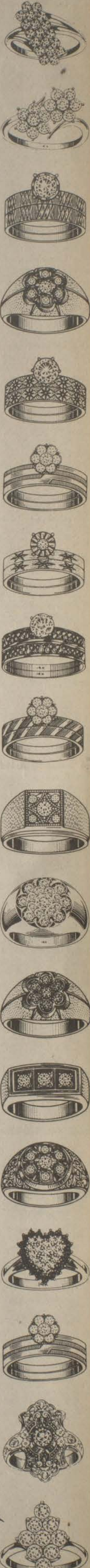
BARGAIN PRICED

BARGAIN PRICED \$12 (2 Per Carton)

CASTLE'S JEWELRY & GIFTS

AT MAYO PLAZA

Your Gift and Jewelry Store



Yes, One More,
And Another,
Another.....

You can have as many as you please. Add-a-pearl or add-a-bead. It's up to you and that means you get exactly what you want in a necklace. Our fine selection includes lustrous pearls, golden beads, jade and your favorite stones.



Hearts
in Solid 14K Gold

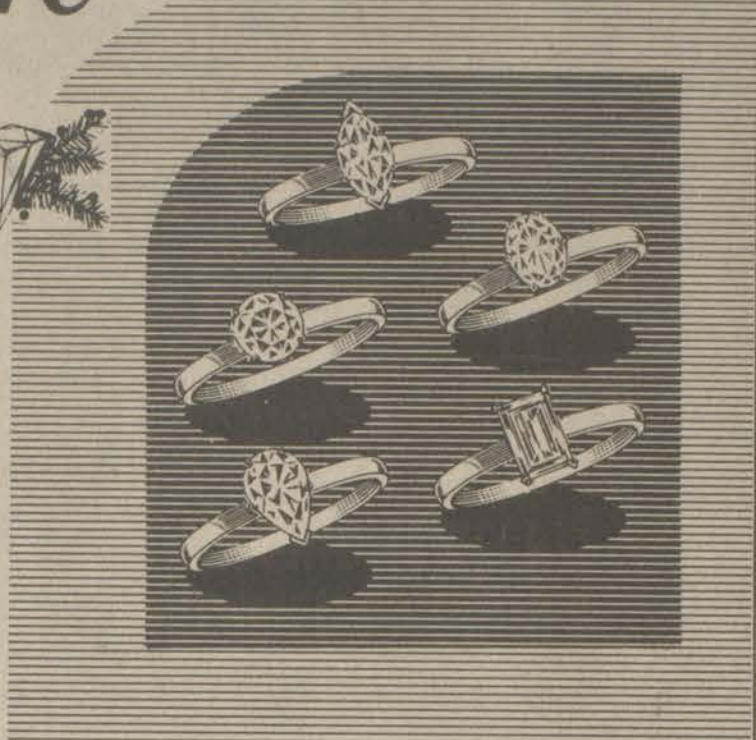
See our entire collection of 14K gold charms and chains

OUR *Add-a-Link*[®]
DIAMOND BRACELET
easy to give...
easy to own...

Add-a-Link[®] diamond bracelets are beautiful from the beginning. Then on every special occasion just add an Add-a-Link[®] and watch it grow into a dazzling blaze of glory when complete.

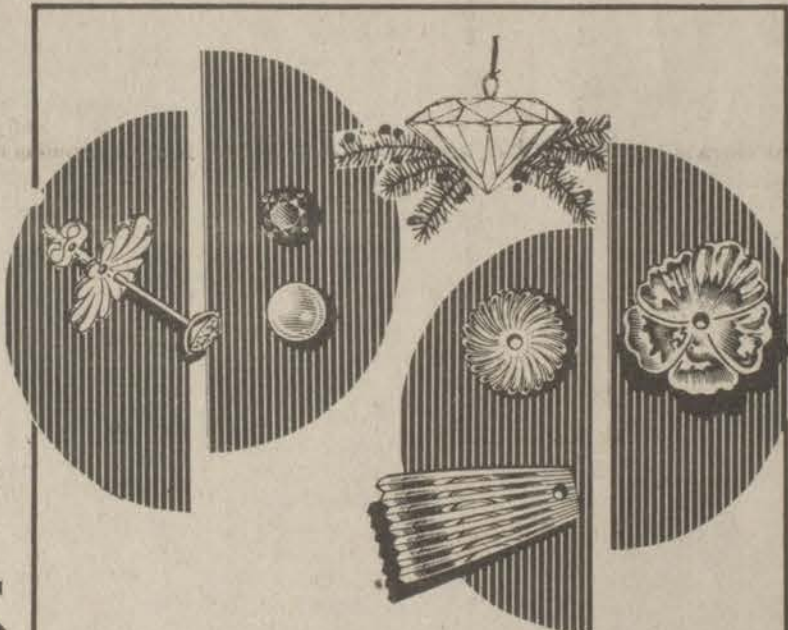
It's so easy to give... so beautiful to remember

Many lovely styles



A Diamond Will Change Her Life

Buying her a diamond is perhaps one of the hardest decisions you'll ever have to make, especially when there's so much to consider - cut, clarity, color and karat. Let us help you by suggesting the various shapes - brilliant, pear, marquise, oval, emerald and heart.



14K JACKETS

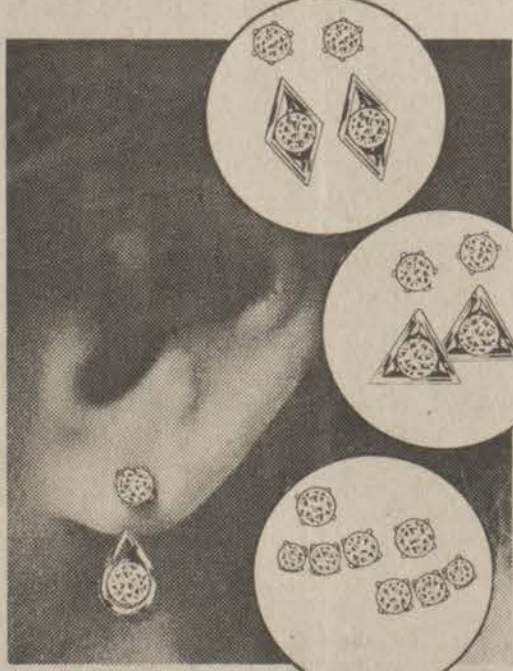
Gold earring jackets add 14 karat shine to your favorite studs. A new look created instantly by you. Several styles fit around your studs to match your mood or the fashions of the day.

Perennial Diamonds

Diamond earstuds in varied total weights. All elegant in themselves. Sparkling diamonds in delicate, yet durable, prong settings to show off the diamonds in their full glory. The perennial gift for any occasion.



diamond *profile enhancers*[™]
the total look of elegance.



The most innovative idea in diamond fashion... the Profile Enhancers are designed just for you. They complement your facial structure to bring out your own personal beauty. Fashioned in precious 14K gold and brilliant diamonds, you can wear them with your own studs or you can purchase the complete ensemble. Come in and select your own customized Profile Enhancers.

GRANDFATHER CLOCKS
MASONIC JEWELRY
HUMMEL FIGURINES
CANISTER SETS
SILVER HOLLOWARE
ICE BUCKETS

14K GOLD CHAINS & CHARMS

OPEN EVERY NIGHT TILL 8 • SUNDAY 1-6

ONLY MINUTES AWAY IN

PAINTSVILLE



How To Make Travel Photography A Snap



One hundred years ago, if you wanted good travel pictures you had to buy them from a professional photographer. Photography in those days was a hassle, practiced only by seasoned pros and intrepid amateurs.

The photographer had to mix his own emulsion, pour it onto a glass plate, station the plate on his camera, take the picture, and then carry the still-wet plate into the darkroom to be developed. For outdoor photos, it was necessary to carry along chemicals, plates, a dark tent, and a bulky camera to produce a picture.

George Eastman changed all that. First, he began producing his own dry plates, which eliminated some of the chemicals and mess of wet-plate photography.

Then he invented roll film. Paper-backed light-sensitive film ushered in a new era in photography. The roll film was fitted to a plate camera with a patented Eastman-Walker roll film holder.

The No. 1 Kodak camera was the first one simple enough for a casual amateur to use. Loaded with enough film for 100 pictures, it could be taken on a trip, brought home, and turned into the Eastman Company factory in Rochester. The customer would receive 100 beautifully mounted pictures and the camera returned, reloaded with film. The company's motto was: "You press the button, we do the rest." Thousands of travelers and amateur camera buffs found to press the button.

Many more refinements of the photographic process were to follow. Photography became so simple and rewarding that last year amateur photographers took more than 9 billion snapshots.

Your Best Shot

For many people, beaches are synonymous with summer; and a day at the beach is a chance to relax, swim, sun and take pictures. Photographing the fun is one way to retain memories of summer's good times all winter long.

In order to have the best photos of your beach experiences, follow these tips on picture-taking and camera care from photo experts.

The first thing to remember is keep your camera handy. The unexpected is often the most exciting, and that's true of picture-taking as well. You'll miss a lot of great snapshots if your camera is packed away.

Never put your camera or film in a hot, stuffy place, and certainly avoid the glove compartment or trunk of a car where temperatures can get severe on a very hot day. Extreme heat can harm your film.

When the camera is not in use, put it in a plastic bag to protect it from the sand and surf. Keep the plastic bag out of the sun if possible. For extra insulation, bring along a beach bag or a dry cooler.

One of the best cameras for beach picture-taking is a pocket-size camera that gives you the choice of either a telephoto lens or a normal lens at the flick of a switch. With the telephoto lens you can double the image size without moving.

When possible, position your picture subjects with the sun to their

side or rear. That will help avoid squinting into the camera as well as providing pleasant lighting effects. Remember to block the sun from shining directly into your camera's lens.

The early morning and late afternoon sun are good for picture-taking as midday. When the sun is close to the horizon it's easier to get backlighting and sidelighting effects. Overcast days, with their subtler colors, also produce good pictures.

Check the horizon to make sure it's straight in the viewfinder when you squeeze the shutter. Note, also, that a low horizon produces a sense of spaciousness in your pictures; a higher horizon seems to bring the images closer.

Think about framing your scenic pictures. By placing a person, a tree, or perhaps a clump of grass in the foreground of your pictures, you'll give them a sense of depth.

Get some action into your pictures. This should not be difficult at the beach where there's always something going on. Riding the waves, chasing a Frisbee, and burying sleeping, and unsuspecting "victims" in the sand are the types of beach activities you want in your pictures.

If rain dampens your sunbathing, you can fill the hours taking photographs of surroundings transformed by the weather. You'll find a multitude of picture possibilities the minute the rain has eased to a drizzle or stopped altogether.

Sopping-wet conditions change dull, familiar surfaces into things of beauty. Driftwood and boardwalks turn to a deep charcoal. Hard surfaces, such as boat hulls, walls and streets, take on a gleaming, glassy appearance. Grass and foliage have a subtle sheen.

The wetness enhances colors much the way a coat of varnish acts on wood. Bright hues especially stand out in the dim light of overcast skies.

The dim light also means you should use high-speed film.

If you shoot while the rain is still falling, take pictures from the porch of your cottage, from under a beach umbrella, or even through a rain-blurred window.

And watch the sky, because cloud formations can be unusually dramatic as the storm departs.

For old friends at home, send instant postcards. Just take an original photo with an instant camera, insert the instant color print into a postcard frame, and mail it with your message. Instant postcards can be purchased from photo dealers almost everywhere.

Identify instant prints immediately after taking them by writing the date and location on the front margin of the print with an instant photo marking pen. This will help you to organize them in your photo album when you get back home. Also don't forget to include pictures of signs and posters, which will add color to your album and serve as identifying titles to show where you've been.

The photo experts say there is one mistake amateur photographers make more than any other. They jiggle the camera as they are taking the picture, producing blurry shots. When you're ready to shoot, take a deep breath, hold it a second, and gently squeeze the shutter. You will be well on the way to professional-looking pictures.

How To Care For Your Camera While Traveling

To keep your photographic equipment in good working order, just follow these camera care tips from the photo experts.

When possible, keep your camera, film and other supplies in moderately warm temperatures. Most photo equipment works best between 45 and 85 degrees. If you buy large quantities of film, store it in the refrigerator until you are ready to use it. Remember to thaw it for an hour before you start taking pictures.

If you are photographing at the beach, store your camera and film out of the hot sun when not in use. A dry cooler or duffel bag will protect your equipment from sand, water and extreme heat. In cold climates, carry your camera in a zipped pocket of a parka or inside flap of a hunter's vest so your own body heat will keep it warm.

Guard against scratches to the lens by avoiding camera contact with any hard or sharp objects. A model with a lens cover is ideal for travelers because it provides added protection. Just slide the cover over the lens whenever your camera is not in use.

Avoid dust or moisture on the camera's lens and view finder. Check the lens periodically to make sure it is clean and dry before you take a picture. It is helpful also to have a small dust brush or special lens tissue to wipe off anything that gets on the camera's eyes.

If your camera ever falls in the water, place it as soon as possible in a plastic bag filled with clean water. Then seal the bag to guard against rust. If the camera is dropped in salt or muddy water, or in a chlorinated pool, rinse it off at once with fresh water before putting it in the bag. Leave the camera in the bag until you can get it to a repairman—again, as quickly as possible.

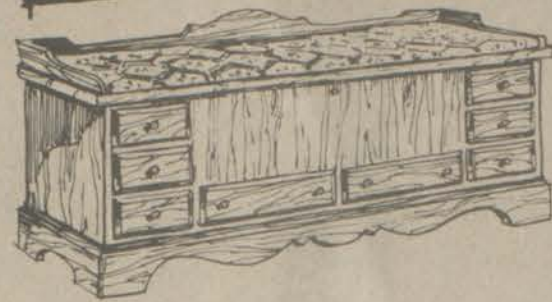
To protect against dropping or dunking your camera, use the neck or wrist straps. A dropped camera should be checked first for obvious signs of damage. Then remove the film and look through the viewfinder as you press the shutter. The camera is probably in working order if a light flashes through the lens as the shutter is pressed. But if the shutter is jammed open or closed, your camera will need servicing.

Never force anything on the camera. If nothing happens when you press the shutter, try advancing the film again. A shutter will not move unless the film has been advanced fully. If the film advance isn't cooperating either, see if the film cartridge has reached its end. If it hasn't, remove the cartridge and try the advance with an unloaded camera.

For service, take your camera to photo dealers or consumer centers. You also can mail them directly to equipment service centers with a note clearly stating your problem. Find the nearest center by checking the address list on the service manual supplied with your camera or consult your phone directory.

Finally, don't plan to travel with a camera before you have read the instruction manual and understand the particulars about your model. Then if you are still not sure of yourself, bring the manual along as a reference en route.

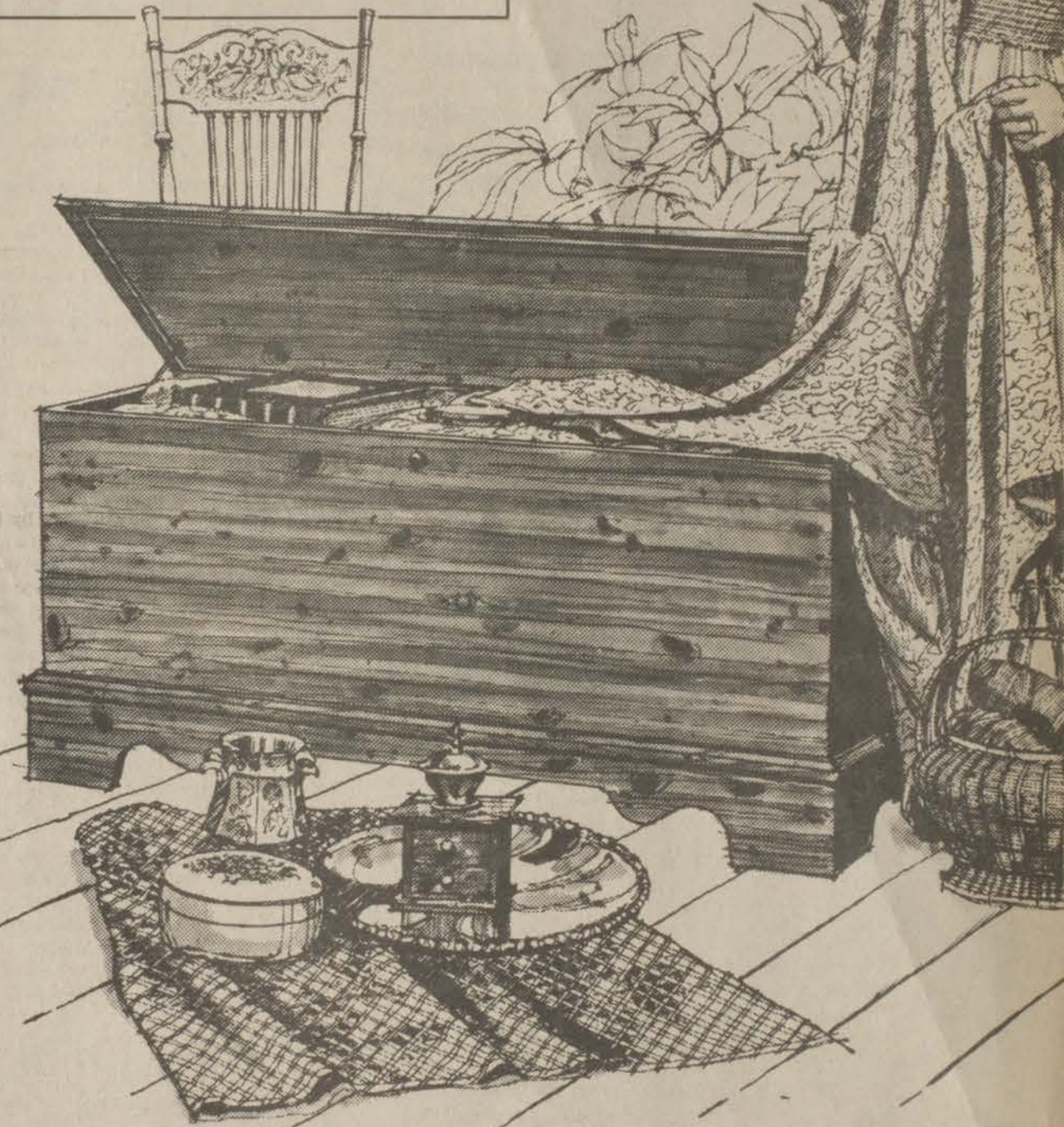
AS ADVERTISED
IN GOOD HOUSEKEEPING'S
**COUNTRY
LIVING**
MAGAZINE



No.4149 Colonial with fabric top. Pine or maple.



No.3969 Colonial with fabric top. Cherry finish.



Out of the past
comes a
beautiful present.

Lane[®] Love Chest

**specialty
priced!**

No.4522 Rustic Early
American styling in
your choice of rich
cherry or a natural
cedar finish.

These beautiful love chests are American classics and they make the kind of gifts that will be used and treasured for a lifetime. But they are much more. They are a beautiful expression of your love and caring. A traditional token of tenderness steeped in centuries of romance. All are fashioned of fine cabinetwood veneers and are cedar lined to protect her most cherished keepsakes for your future life together.

PRE-CHRISTMAS SALE

RITA RENE'S FASHIONLAND

GARTH, KY • ACROSS FROM GARTH VOCATIONAL SCHOOL

RITA & MELINDA RENE SAY IT ISN'T NECESSARY TO WAIT UNTIL AFTER CHRISTMAS FOR BIG SAVINGS IN LADIES' AND GIRLS' FASHIONS. COME IN AND TAKE ADVANTAGE OF THE BIG SAVINGS ON MANY NAME BRANDS!

- 15% OFF VELVET & CORDUROY BLAZERS BY MODERN JR. & PERSONAL
- 15% OFF WOOL & DENIM SKIRTS BY MODERN JR. & DEE CEE
- 10% OFF SPORTSWEAR BY AILEEN
- 30% OFF DRESSES BY FOREVER YOUNG AND ACT I
- SWEATERS BY DEE CEE, DUCK SOUP, HUSH PUPPY AILEEN AND ARPEJA (ORGANICALLY GROWN) ARE MARKED DOWN.
- 50% OFF VICEROY JEANS
- 40% OFF MANY MISCELLANEOUS ITEMS THROUGHOUT THE STORE.

FREE GIFT WRAPPING AND A CONVENIENT LAYAWAY PLAN

CRISTMAS HOURS: MON.-SAT. 9-8; SUN. 1-6

PHONE 285-9197

SPECIAL SALE OF LIVING ROOM SUITES

American of Martinsville

Low Price Of **\$925** Two Priced At **\$700** ea.
Reg. \$1,537⁰⁰ Reg. \$1,125⁰⁰

MICROWAVE OVENS

Sharp and Kelvinator

Starting At **\$439⁰⁰**

BASSETT BEDROOM SUITES

Starting At Our Everyday Price Of... **\$649⁰⁰**

DIFFERENT STYLES OF LANE CHESTS

Priced At **\$216⁰⁰**

The Ideal Gift For Her At Christmas!

Beginning Saturday, We Will Be Open Till 8 P.M. Each Day Until Christmas.

PARKWAY FURNITURE & APPLIANCES

Phone 886-6856 • 10 Miles West On Mountain Parkway

NOTICE OF INTENTION TO MINE

Pursuant to Application Number 036-5125.

1. In accordance with the provisions of KRS 350.055, notice is hereby given that: Buck Coal Company, Inc., 128 Court St. Prestonsburg, Ky. 41653 intends to file an application for the surface disturbance mining of approximately 4.2 acres located south of Langley in Floyd County. The proposed operation is approximately 0.3 miles south of State Route 80's junction with Turkey Creek Road at Langley and located south of Garth Branch, latitude N 37d. 30'50", longitude 82d. 46' 55". The surface of the area to be mined is owned by: Lloyd McGarey heirs. A brief description of the kind of mining activity proposed is: deep mine entry. The application will be filed at the Bureau of Surface Mining Reclamation and Enforcement, Prestonsburg Area Office, Prestonsburg, Kentucky 41653. Persons wishing to file written objections and/or request a formal administrative hearing in regard to the above described underground mine should notify the Department for Natural Resources and Environmental Protection within 30 days of the date of this notice. The written objection must have attached a copy of the newspaper clipping, and reference the above application number. Such objection or request must be in accordance with KRS 224.081 (2) and must be forwarded to the Director of Permits, Bureau of Surface Mining Reclamation and Enforcement, Capital Plaza Tower, Frankfort, Kentucky 40601.

11.

NOTICE OF INTENTION TO MINE

In accordance with the provisions of KRS 350.055, notice is hereby given that: 3-M Development Company, Box 266, Robinson Creek, Kentucky, intends to file an application for the surface disturbance mining of approximately 29.80 acres located northwest of Thomas in Floyd County. The proposed operation is approximately 0.5 miles north of State Route 194's junction with U.S. 119, and located north of Lower Johns Creek, latitude 37d. 42' 30", longitude 82d. 35' 05". The surface of the area to be mined is owned by: New South Coal Company. A brief description of the kind of mining activity proposed is: Strip and Auger. The application will be filed at the Bureau of Surface Mining Reclamation and Enforcement Prestonsburg, Area Office, 431 South Lake Drive, Prestonsburg, Kentucky 41653.

Persons wishing to file written objections and/or request a formal administrative hearing in regard to the above described surface mine should notify the Department for Natural Resources and Environmental Protection within 30 days of the date of this notice. A copy of the newspaper clipping must be attached to the written objection. The objection or request for a hearing will reference application number 036-0037. Such objection or request must be in accordance with KRS 224.081 (2), and must be forwarded to the Director of Permits, Bureau of Surface Mining Reclamation and Enforcement, Capital Plaza Tower, Frankfort, Kentucky 40601.

2. Notice is hereby provided pursuant to 30 CFR 715.13 (d) (10) and KRS 350 that the proposed post mining land use does not constitute a change from the pre-mining land use. Public comment regarding a proposed change in land use may be submitted to the address listed above.

11.

NOTICE OF INTENTION TO MINE

In accordance with the provisions of KRS 350.055, notice is hereby given that: Shirrell Morris d/b/a J & M Fuels, West Van Lear, Ky., intends to file an application for the surface disturbance mining of approximately 2.0 acres located south of Langley in Floyd County. The proposed operation is approximately 2.5 miles south of State Route 777's junction with KY 80, and located west of Turkey Creek, latitude 37d. 30' 28", longitude 82d. 47' 15". The surface of the area to be mined is owned by: Tode Day and Ernest Hayes. A brief description of the kind of mining activity proposed is: Contour stripping for On Site Construction. The application will be filed at the Bureau of Surface Mining Reclamation and Enforcement Prestonsburg Area Office, 431 South Lake Drive, Prestonsburg, Kentucky 41653.

Persons wishing to file written objection and/or request a formal administrative hearing in regard to the above described surface mine should notify the Department for Natural Resources and Environmental Protection within 30 days of the date of this notice. A copy of the newspaper clipping must be attached to the written objection. The objection or request for a hearing will reference application number 036-0049. Such objection or request must be in accordance with KRS 224.081 (2), and must be forwarded to the Director of Permits, Bureau of Surface Mining Reclamation and Enforcement Capital Plaza Tower, Frankfort, Kentucky 40601.

Notice is hereby provided pursuant to 30 CFR 715.13 (d) (10) and KRS 350 that the proposed post mining land use does constitute a change from the pre-mining land use. Public comment regarding a proposed change in land use may be submitted to the address listed above.

11.

Your Christmas Gift

Richard Burson

Christmas has been set aside that we might rejoice together over that most costly Gift ever given—the Gift revealing the greatest conceivable love. God gave the first Christmas Gift by sending His only begotten Son even the Lord Jesus Christ. Think what it would mean should the whole record of this Unspeakable Gift be blotted out. Will you pause at the Christmas time to take stock of what this gift means to you?

Jesus gave HIMSELF for us (Galatians 2:20). This means that as the Infinite Son of God, HE GAVE ALL—"For our sakes He became poor, that we through His poverty might be RICH." (2 Corinthians 9:8).

He gave His HEAD to wear the thorns for you.

He gave His EYES to weep over your sins. (Luke 19:41)

He gave His CHEEKS to be smitten for you. (Lamentations 3:30)

He gave His TONGUE to pray for the lost. (Luke 23:34)

He gave His BACK to be beaten for you. (Psalm 129:31)

He gave His SIDE to the spear for you. (John 19:34)

He gave His HANDS to the cruel nails for you. (Psalm 22:16)

He gave His BLOOD to redeem your soul. (Acts 20:28)

He gave His SOUL an offering for you. (Isaiah 53:12)

He gave His LIFE for the sheep. (John 10:11)

Christ—the first Christmas Gift hung on the tree for YOU.

What will you do with Him?

If you will receive Him now He will give another gift: eternal Life. Will you receive God's gift now? "As many as received Him to them gave He power to become the sons of God." John 1:12.

Submitted by Mary Jenkins, Martin, Ky.



HANGING OF ORNAMENTS is an activity which is being repeated now in homes everywhere to the delight of the young and some not-so-young who retain an enthusiasm for the Christmas season.

TO WHOM IT MAY CONCERN

On and after this date I will not be responsible for any debts incurred by anyone other than myself.

WARREN KEVIN BLANTON
Allen, Ky. 41601

12-17-21-pd.

PUBLIC NOTICE

The Floyd County Solid Waste, Inc. Board did not meet in regular session on December 10, 1980 due to the lack of a quorum.

11.

PUBLIC SALE

The Floyd County Fiscal Court will offer for sale to the highest and best bidder the following equipment:

(1) 1967 Dodge C & C Truck Model No. D600-

(1) 1978 Ford L.T.D. Sedan- F8U63S 135364F

(1) 1977 Ford L.T.D. Sedan- 7U 63S 190951

Truck may be seen on Right Beaver Creek at the mouth of Reed Branch, Anthony Castle's. The Ford Sedans may be seen behind the Courthouse in the County Parking Lot.

The Floyd county Fiscal Court will accept bids on the above until January 14, 1980 at the hour of 9:00 o'clock a.m.

The Fiscal Court reserves the right to reject any and all bids filed.

C. OLLIE ROBINSON
Fiscal Court Clerk

12-17-21.

PUBLIC NOTICE

First and Second Reading

The Floyd County Fiscal Court, at its Regular Meeting, commencing at 9:00 a.m. Jan 14, 1980 to be held at the Floyd County Courthouse Annex Conference room, Prestonsburg, Kentucky will consider for a reading the following ordinance:

AN ORDINANCE, relating to the Annual Budget and Amendment thereof: IT IS ORDAINED BY THE FISCAL COURT OF FLOYD COUNTY that;

SECTION ONE: The annual budget for Fiscal year 1980-81 is amended to:

(a) Increase receipts of the General fund by \$106,08.00, to include unanticipated revenues from Commonwealth of Kentucky.

(b) Increase budget expenditures account numbers 301-A 301-C by \$85,913.00 and Account No. 70-C-7B by \$20,175.00.

SECTION TWO: The sum added to budget expenditure account in Section One is appropriated for general governmental purposes.

Approved by the Fiscal Court this the 10th day of Dec., 1980.

BILL WELLS
Floyd County
Judge/Executive

A copy of the full text of said Ordinance above will be available for public inspection in Floyd County Judge/Executive office in the Floyd County Courthouse Annex in Prestonsburg, Kentucky between the hours of 8:30 a.m. and 4:00 p.m. Monday through Friday.

SECOND READING NOTICE:

The Floyd County Fiscal Court, at its regular meeting commencing at January 14, 9:00 o'clock a.m., to be held at the Conference room of the Floyd County Courthouse Annex, in Prestonsburg, Kentucky, will call for a second reading and then consider same for passage the ordinances stated in the above 1st reading Notice. Said ordinances as well as the last paragraph of said notice are made a part of this second reading notice as though fully written herein.

FLOYD COUNTY FISCAL COURT
BY: C. "OLLIE" ROBINSON
Clerk

Blankenship Bond

Still at \$225,000;

Newsome Return Set

Although his brother, Randy Blankenship, and wife, Judith, are believed to be recovering at a Lexington hospital from shotgun wounds which he allegedly inflicted, Danny Blankenship, of Ligon, remains in jail here in default of bonds totalling \$225,000.

Both the husband and wife were shot in the arm and side. Their two-year-old son, Eric, was struck by three pellets but was not seriously hurt.

No attempt has been made by the accused man to gain a reduction of bond since improvement has been noted in the condition of the two adults.

John Henry Newsome, who has won from the Court of Appeals a reversal of his conviction and pen sentence for the knife-slaying here of Gerald McBrayer, has been ordered released from Eddyville prison and returned here before Dec. 18.

He is expected to be present Friday morning for the hearing by Circuit Judge Hollie Conley of motions filed in his behalf by his attorney, Gary Johnson, last week.

The motions asked that a date be set for Newsome's retrial and that he be granted pre-trial release.

Judge Conley deferred hearing on the motions till the defendant can be present in court.

Hoosier Child Custody Case In Court Here

A lengthy child-custody dispute has taken yet another turn following a recent decision of the state Court of Appeals overturning a ruling earlier this year by Floyd Circuit Court Judge Hollie Conley.

The reversal alters for a third time custody of the three children of Donald and Phyllis Clauson. Following an Indiana divorce, courts in that state awarded custody of the children first to the mother and then to the father. While the children were living with their father, however, Mrs. Clauson allegedly brought them to this county without his consent.

Clauson filed a petition in circuit court here last January seeking enforcement of the Indiana decree, but custody was granted instead to Mrs. Clauson.

In appealing the decision, Clauson argued that the decision of the Floyd court violated a clause of the U.S. Constitution which requires that a child custody decree "give full faith and credit" to a prior court judgment unless a change of condition can be proved.

The Appeals Court ruled there had been no competent evidence of a change in condition since the Indiana decree.

Clauson was represented in the case by Assistant Floyd County Attorney Eric D. Hall. Mrs. Clauson was represented by Prestonsburg attorney Gary Johnson.

According to official accident reports, the probability of a fatality in an automobile crash roughly doubles as traveling speed increases from 45 to 60 miles-per-hour and doubles again as the speed goes to 70 miles-per-hour.

LUNCHEON GUESTS

The Local Churchwomen were guests at a luncheon at the Riverview Manor Nursing Home last Friday with Mrs. Eleanor Robinson, director there, as hostess. Prior to the luncheon, the group joined in singing the Doxology, and the devotionals were given by Mrs. Mary Lou Layne, president of this organization. The table was covered with a green Christmas cloth, and candles, surrounded with fruit served as the decorations. In the background the Nativity Scene and other decorations gave the room an atmosphere of tranquility. Following the luncheon, the Christmas Story was read by the president, Mrs. Layne. It was decided that the various local churches would be responsible for the visitation to the nursing homes here. The president called attention to a letter to the Editor of The Floyd County Times, written recently by Mrs. Myrtle Snevley, chairman of "Better Literature," regarding guidelines for children. She announced that 70 posters, proclaiming, "Let Us Keep Christ in Christmas," had been placed in local stores and places of business by Mrs. Becky Short and members of her committee on activities during the Advent season. Mrs. Layne announced that the World Day of Prayer, under the direction of Mrs. Julia Curtis, will be held at the First United Methodist Church here March 6, and that the next regular meeting of the Local Churchwomen will be at the First Presbyterian Church, February 20. Attending Friday's luncheon and meeting were Mrs. Mary Lou Layne, Mrs. Elma Jessen, and small son Paul, Mrs. Becky Short, Miss Myrtle Pugsley, Miss Christine Spradlin, Mrs. Della Herald, Mrs. Docia Woods, Mrs. Nancy Sturgill, Mrs. Jean Burke, Mrs. Garnett Fairchild and the hostess, Mrs. Eleanor Robinson.

FOR SALE

1969 El Camino; 1974 ¾-ton Ford truck with utility bed; 1974 Chevy truck, ½-ton step-side.

DAYS, CALL 886-8454,
8 a.m.-4 p.m.
EVENINGS, 886-1541.

TURKEY SHOOT EVERY SUNDAY AT 10 A.M.

CROSS FROM PRINTER POST OFFICE. 12-GAUGE FACTORY CHOKE. 12-10-21-pd.

TURKEY SHOOT

Friday nights—16, 20 & 12 gauges, 38-yd. range. Saturday nights—12 gauges. Sundays—strictly factory-choked 12 gauges.

At BUCKLEY'S (Spurlock Fork)

10-15-11.

GOOD PRICES

on ALL TROPHIES

APPALACHIAN TROPHIES & ENGRAVING

Custom Engraving, Trophies, Plastic

1½ Miles North of Prestonsburg On Stephens Branch Road.

Free engraving on all trophies.

PHONE 886-3078 or 886-8704
Jean Hickman & Lynn Garrett

According to a U.S. Department of Labor publication, the President signed the Trade Act of 1974 on Jan. 2, 1975. The Act was designed to help workers who lose their jobs because of imports, as well as to provide financial and technical assistance to companies and communities hurt by foreign competition.

Samuel Gompers, first president of the American Federation of Labor, died on Dec. 13, 1924, according to a U.S. Department of Labor publication, "Important Events in American Labor History."

The National Apprenticeship Act was passed in 1937, establishing the Bureau of Apprenticeship in the U. S. Department of Labor, according to "Important Events in American Labor History", a publication of the U. S. Department of Labor.

TRAILER SPACES FOR RENT

Five miles west of Prestonsburg on Mountain Parkway. City water. Janie Moore, phone 886-6219.

HAPPY BIRTHDAY, DAD! (CLYDE GRIFFEY)

WE LOVE YOU.

Mr. and Mrs. Pete Caudill and Bobby
Mr. and Mrs. Franklin Griffey and Daughters
Mr. and Mrs. John Griffey and Alan
Mr. and Mrs. Bob Griffey and Sons

'Twas the Right Before Christmas SALE ALL COATS AND VELVETS 50% OFF Lad 'n Lassie Shop Phone 886-3142 Prestonsburg Phone 285-3505 Martin

FEDERATED STORE MARTIN, KY.

WE HAVE A BIG STOCK OF CHRISTMAS MERCHANDISE

JUST ARRIVED!

A NEW SHIPMENT OF SCHOOL JACKETS FOR KENTUCKY, McDOWELL, MARTIN, GARRETT, MAYTOWN, OSBORNE, WHEELWRIGHT AND MELVIN

Superb sound begins with JENSEN.

JENSEN R430 AM/FM Stereo/Cassette Car Stereo Receiver

- Dolby® Noise Reduction for both FM and tape
- Loudness Compensation
- Interstation FM Muting
- Separate bass and treble controls
- Bi-amplification control
- Feather-touch switches
- Automatic Tape Alarm System



R430

B&W TV AND APPLIANCES & Sound Gallery

No. Lake Dr., Prestonsburg • 886-9682

OPEN 9 TILL 8 TILL CHRISTMAS

The thrill of being there!

JENSEN SOUND LABORATORIES AN ESMARK COMPANY

Mrs. Polly Bolen

Funeral services will be conducted at 10 a.m. tomorrow (Thursday) at the Stone Coal Regular Baptist Church at Garrett by ministers of the church for Mrs. Polly Bolen, 87, of Harold, who died Monday at Our Lady of the Way Hospital following a prolonged illness.

Born April 1, 1893 at Garrett, she was a daughter of the late Rant and Mary Coburn Bolen, and was married to Lee Bolen, who preceded her in death. She had been a member of the Stone Coal Regular Baptist Church for 63 years.

Survivors include one son, Jack Bolen, of Littcarr; three daughters, Mabel Bolen, of Harold, Beulah Mae Moore, of Mousie, and Lovern Vaquez, of Toledo, O.; one brother, Ballard Coburn, of Garrett; a sister, Liza Bolen, of McGuffey, O.; 10 grandchildren and 12 great-grandchildren.

Burial will be made in the Bolen family cemetery on Rock Fork under direction of Merion Funeral Chapel.

Visitation may be made at the church.

German Hamilton

German Hamilton, 77, of Teaberry died last Wednesday at Highlands Regional Medical Center following a long illness.

Born November 5, 1903, he was a son of the late Nelve and Mary Hamilton. He was a retired farmer.

He is survived by his widow, Mrs. Sarah Hamilton; four sons, Charles, Ermel, and Jones Hamilton, all of Lorain, O., and Sie B. Hamilton, of Harold, and an adopted son, Sterling Hamilton, Jr., of Teaberry; four daughters, Mrs. Bessie Howell, of Beech Grove, Ind., Mrs. Mary Bell Bradley, of Lorain, O., Mrs. Mindy Faye Hamilton and Mrs. Myrtle Bentley, both of Pikeville; two sisters, Mrs. Tilda Kiser and Mrs. Verdie Bentley, both of Teaberry; 31 grandchildren and nine great-grandchildren.

Funeral services were conducted at 10 a.m. Saturday at the Old Samaria Regular Baptist at Teaberry by ministers of the church. Burial was made in the Hamilton cemetery under direction of Hall Funeral Home.

Mrs. Mary Bradford

Mrs. Mary Slone Bradford, 84, of R.R.2, Silver Lake, Ind., formerly of this county, died Monday at her home following an extended illness.

Born July 16, 1896 at Blue River, she was a daughter of the late Willie and Peggie Risner Slone and was married to George Bradford, who preceded her in death in 1955. She was a member of the Pentecostal Church of God in Silver Lake.

Surviving her are eight sons, Valice Bradford, of Flatwood, Va., Taylor Bradford, of Leesburg, Fla., Burnis Bradford, of Goodloe, Henry, Menifee, Ellis, Jay and Paul Bradford, all of Silver Lake, Ind.; two daughters, Mrs. Daisy Manns, of Macy, Ind., and Mrs. Norah Owens, of Silver Lake, Ind.; one half-brother, Elmer May, and a half-sister, Josephine May, both of Jenny's Creek; 66 grandchildren; 86 great-grandchildren and seven great-great-grandchildren.

Funeral services will be conducted at 2 p.m. Wednesday in Silver Lake, Ind., after which the body will be returned to this county where funeral services will be conducted at 10 a.m. tomorrow (Thursday) at the Goodloe Church of God by the Rev. Byrd Poe. Burial will be made in the Slone cemetery at Goodloe under direction of DeLaughter Mortuary.

Obituaries

Ervin Little

Ervin Little, 68, of Bypro, died last Friday at the McDowell Appalachian Regional Hospital following an extended illness.

Born December 14, 1912, he was a son of the late T. J. and Mary Mosley Little. He was a retired miner, last employed by Inland Steel Corporation, and was a member of the Pentecostal Church of God.

He is survived by his widow, Mrs. Elizabeth Russell Little; four sons, Stephen Little, of Lexington, Ronald Little, of Bowling Green, Donald Little, of Pikeville, and Ervin James Little, of Millard; one stepson, Jerry Simpson, of Hager Hill; two daughters, Mrs. Darlene Rossi, of Bowling Green, and Betty Ann Little, of Lexington; a step-daughter, Carolyn Branham, of Betsy Layne; two brothers, Northern Little, of Lexington, and Sterling Little, of Roanoke, Virginia.

Funeral services were held at 1 p.m. Sunday at the Pentecostal Church of God at Bypro by the Rev. Curtis Johnson. Burial was made in Davidson Memorial Gardens at Ivel under direction of Preston Funeral Home.

Pallbearers were Tom Dusina, Curtis Johnson, Willie Rainey, Charlie Rollins, Luther Russell, and Ray Dempsey.

T. A. Johnston

T. A. (Tobe) Johnston, 88, of Welch, W. Va., died last Saturday morning in a Bluefield hospital following a long illness.

A retired vice president of the McDowell County National Bank, Mr. Johnston was a brother-in-law of Mrs. F. L. Heinze, of Prestonsburg, and had many friends in this area. He was born in Pearisburg, Va., the son of the late James and Ada Blackburn Johnston. A member of the First Presbyterian Church of Welch, he was also an elder of the church and was a member of the McDowell Lodge No. 112, F&AM, the Wyndham Chapter No. 45 R.A.M., Welch Commandry No. 27 K.T., and the Beni Kedem Temple shrine in Charleston. Mr. Johnston was a veteran of World War I in which he served in the Marine Corps.

He is survived by his widow, Mrs. Ruth Gravely Johnston, and one daughter, Mrs. Ann Clayton, of Jacksonville, Fla., and two grandchildren.

Funeral services were conducted in Welch yesterday (Tuesday), and burial was made there.

Gertrude Van Horn

Mrs. Gertrude Van Horn, 85, of Orient, O., formerly of Martin, died last Wednesday in a hospital in Orient following a long illness.

Born May 19, 1895 at Hunter, she was a daughter of the late Sam and Martha Martin Warrens, and had been a member of the Old Regular Baptist Church for 30 years. Her husband, Bert Van Horn, preceded her in death.

She is survived by several nieces and nephews.

Funeral services were conducted at 2 p.m. Saturday in the chapel of Hall Funeral Home by ministers of the Regular Baptist Church. Burial was made in the Martin cemetery.

The U.S. Employment Service, part of the Labor Department, directs the federal-state employment service system, a nationwide network of 2,400 local offices, staffed by about 35,000 state employees.

Coroner Holds Death Of Woman A Suicide

The death, Tuesday of last week, of Thelma Mullins, 35, at Grethel was ruled by Coroner James J. Carter to have resulted from a self-inflicted revolver bullet wound.

Miss Mullins was residing in a mini-home maintained by Raymond and Lorine Parsons at Grethel. She had been transferred there from the Bracken Comprehensive Care Center. Coroner Carter was joined by State Trooper Burdette in the investigation of the tragedy.

A native of Pike county, she was a daughter of the late Ballard and Flora Hopkins Mullins.

Funeral services for the victim were conducted at 10 a.m. last Friday from the Pilgrim Home Regular Baptist Church at Grethel, and burial there in the Frasure Branch cemetery was under direction of the Hall Funeral Home.

Frank Johnson

Funeral services will be conducted at 11 a.m. today (Wednesday) in the chapel of Merion Funeral Chapel for Frank Johnson, 76, of Weeksbury, who died Saturday at the Chillicothe Medical Center in Chillicothe, O., where he had been visiting relatives. The Rev. Wm. Poole will be the officiating minister.

Born June 21, 1902, he was a son of the late David C. and Susanna E. Johnson, and was a retired miner.

Survivors include two half-brothers, Charlie Johnson, of Speight, and Jeff Johnson, of Virgie; one sister, Mrs. Sarah Elsie Trenner, of Wellston, O., and one half-sister, Mrs. Myrtle Gooden, of Virgie.

Burial will be made in the Lone Pine cemetery at Weeksbury under direction of Merion Funeral Chapel.

Webster Hamilton

Webster Hamilton, 64, of Allen, died last Wednesday at the VA Hospital in Lexington following a long illness.

Born April 23, 1916, he was a son of the late Harrison and Martha Hamilton. A retired miner, he was a member of the United Methodist Church and was a veteran of army service during World War II.

He is survived by his widow, Mrs. May Brown Hamilton; two sons, Paul and Jamie Hamilton, both of Allen; two brothers, Raymone Hamilton, of Marshall, Mich., and Ollie Hamilton, of Allen, and three grandchildren.

Funeral services were conducted at 11 a.m. Saturday at the United Methodist Church at Allen by the Rev. Kenneth LeMaster. Burial was made in the Mayo cemetery at Allen under direction of Hall Funeral Home.

Mrs. Thelma Smith

Mrs. Thelma Smith, 37, of Columbus, O., formerly of McDowell, died last Friday at St. Anthony's Hospital in Columbus following a prolonged illness.

Born June 26, 1943, she was a daughter of Mrs. Maudie Caudill Osborne, of McDowell, and the late Beverly Osborne.

Survivors include two sons, Ricky and Danny Ray Gayheart, both of McDowell; three daughters, Debra Lynn Gayheart, of Dresden, O., Malliss Gayheart and Mrs. Kelly Smith, both of Ashtabula, O.; three brothers, Palmer Osborne, of Ashtabula, O., Paul Osborne, of Portsmouth, O., Stallard Osborne, of Columbus, O.; two sisters, Mrs. Jessery Collins, of East Point, and Mrs. Esta Elliott, of McDowell.

Funeral services were conducted Monday at the home of Mrs. Esta Elliott by ministers of the Regular Baptist Church, and burial was made in the Elliott cemetery at McDowell under direction of Merion Funeral Chapel.

Newton Samons

Newton Samons, 90, died last Thursday at his home on Arkansas Creek near Martin after a long illness.

Born August 19, 1900, he was a son of the late Sol and Caroline Conn Samons and was a retired state highway employee. His wife, Sue Samons, preceded him in death.

He is survived by three sons, Lester, Brian, and Roger Samons, all of Martin; three daughters, Mrs. Hurley Samons, of Martin, Mrs. Wilbert Hughes, of Louisville, and Mrs. Robert Taylor, of Colorado Springs, Colo.; 13 grandchildren and nine great-grandchildren.

Funeral services were conducted at 2 p.m. Sunday in the chapel of Hall Funeral Home with Benny Blankenship, the officiating minister. Burial was made in the family cemetery on Arkansas Creek.

Foreign Groups Look At U.K. Ag Research

About the time U.S. farmers heard they will soon provide more grain to China, through the recent U.S.-China Grain Trade Agreement, agricultural researchers at the University of Kentucky were providing the Chinese with another valuable commodity—information on ag research.

Nine scientists from the People's Republic of China toured the UK College of Agriculture earlier this month to learn about Kentucky's research projects and facilities. The stop in Lexington was part of a month-long, coast-to-coast tour that took the scientists to universities, industries and government labs to see equipment in use and visit American scientists.

The most comprehensive reform rules governing the Federal work force occurred on October 13, 1978, with the signing of the Civil Service Reform Act, according to the U.S. Department of Labor publication, "Important Events In American Labor History."

More than 2,400 homes were weatherized during April, May and June 1980 under the federal weatherization program administered in Kentucky by the Department of Human Resources. The number of houses weatherized during the three-month period is more than in any other state in the southeast region during the same period.



Blood, it doesn't grow on trees. Help fill the need by donating blood.

Central Kentucky Blood Center
Prestonsburg Station/Municipal Bldg.
N. Lake Drive/Prestonsburg, KY 41653

THE BANK *BJ* JOSEPHINE

"The oldest bank with the newest ideas"

Announces

PERSONAL CHECKING WITH 5 1/4 % INTEREST

"NOW"

Effective December 31, 1980 government regulations will now permit us to pay you interest on your Checking Account.

WHAT IS "NOW"?

A 5 1/4 % Checking Account that gives you the most for your bill paying money. It combines the best of checking and savings facilities into one account to simplify your life. Your money keeps earning interest until the day the checks you issued must be paid.

HOW CAN I OBTAIN MORE INFORMATION ON THIS BRAND NEW SERVICE?

That's easy. Call our office or stop in and see us soon—you'll be glad you did.

NOW enjoy one stop banking convenience and get the best of checking services and the highest permissible savings rates.

THE BANK *BJ* JOSEPHINE

•Prestonsburg • Garrett • Harold
•Allen • Wheelwright



Times Want Ads Get Results!



CARTER FUNERAL HOME
PRESTONSBURG • 886-2774



HALL FUNERAL HOME

Near the junction of KY 80 and KY 122, at Martin, Ky.

JOHN C. HALL, Owner and Manager

Phones 285-9261 or 285-9262

OPEN DAILY 9-9 • SUNDAY 11-7



Kmart

THE SAVING PLACE



K mart® ADVERTISED MERCHANDISE POLICY
Our firm intention is to have every advertised item in stock on our shelves. If an advertised item is not available for purchase due to any unforeseen reason, K mart will issue a Rate Check on request for the merchandise to be purchased at the sale price whenever available or will sell you a comparable quality item at a comparable reduction in price. Our policy is to give our customers "satisfaction always."

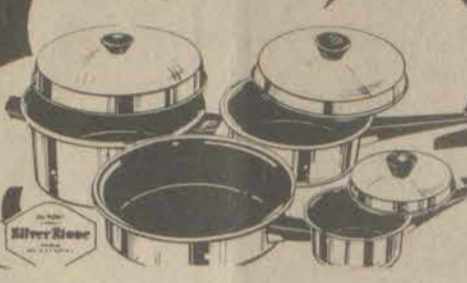
WED. THRU SATURDAY

PRICEBREAKERS



Perky Poinsettias For the Holidays!
Healthy poinsettia adds color to your home! In 6" pot.

\$2.97



Reg. \$30.77-7 Pc. SilverStone Polished Aluminum Set or
Reg. \$31.44-7 Pc. Decorative "Soup to Nuts" Enamel Set

Your Choice

\$19.88



\$14.97 4 Days Only

Give an 'Imperial' Manual Record Player For Christmas

A perfect first record player for your child. Plays both full-size 33 1/3 records and 45's. With durable plastic turntable and single-needle cartridge. For hours of listening pleasure. Great for limited-space areas. Save.



13x8 1/2 x 5 1/2" King Size

4.97 Our Reg. 8.12

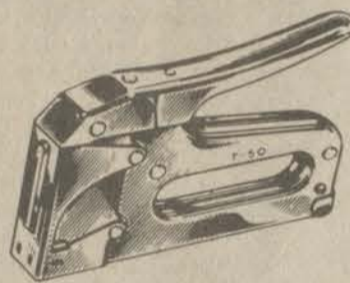
Lunch Kit With Bottle
Rustproof polypropylene, piano hinge. Quart bottle.



Our Reg. 15.77

9.88

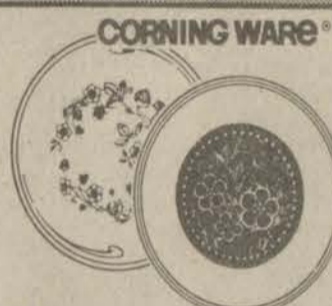
7-pc. Propane Torch Kit
With final filtering orifice. Instant lighting. Save.



Our Reg. 17.88

10.97

Staple Gun Tacker For All-around Use
Uses 6 sizes of T50 staples including Cellitite®



\$34.97 Our Reg. 47.97

20-pc. Dinnerware Set
Corning® Expressions™ Service for 4. Pattern choice. Save now. **20-Pc. Corolle Livingware Set** 22.88



Ages: 1 1/2 To 5 Years

Ages: 4 To 10 Years

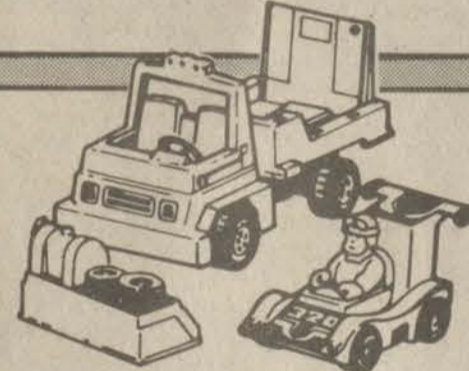
Your Choice **5.93**

72-Piece Set of Lincoln Logs®, interlocking. Save Now. Blocks. Set of 49 colored, 7 shapes.



Red 10 Speed, Men's or Ladies' Bicycle

\$69 Our Reg. 89.97



Race Car Rig Fisher-Price Race Car Rig

8.77

Our Reg. 10.96



4.44 Our Reg. 5.96

Flannel Shirt

Casual enough to be comfortable, detailed to be noticed. Cotton flannel shirt in his favorite plaid.

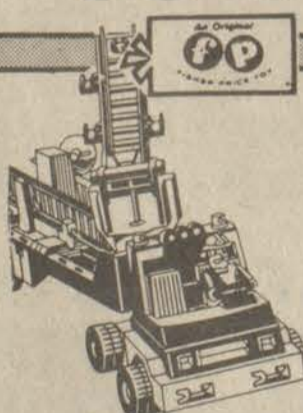


Flip A Wig Set

2 Wigs plus play brush & accessories

7.77

Our Reg. 12.88



Sale Price **9.96**

Fire Truck Fisher-Price™ hook and ladder outfit.



Trail Boss Rifle

Trail Rider Rifle

4.97 5.97

Our Reg. 6.57

Our Reg. 8.66



K mart® Low Price **26.47**

Less Factory Rebate **\$7**

Your Net Cost **19.47**

Smoke Detector

With Escape Light™ for the protection you need.



\$89

Sale Ends Sat. Take-with Price

Solid-state B/W Portable TV

Featuring "New Vista 200" VHF tuner for excellent reception, even in weak or fringe signal areas! Dual-function VHF/UHF antenna eliminates the need for a separate UHF ring. Handsome walnut-grain plastic cabinet with molded-in handle. Great savings now.



\$158 4 Days Only Take-with Price

B/W Portable TV Provides Clear Picture Detail!
With solid state 30 channel tuning system, "Perno-Set" VHF fine tuning control and 70 position UHF channel selector. Save now!



\$249 WITH GE COUPON AVAILABLE AT YOUR LOCAL K mart STORE

Solid-State Porta Color™ TV With GE® Color Control
Santa's sharpest portable buy! Features of big screen TV in handy portable size and price. Clear, bright picture. Walnut-tone case.



\$99 Our Reg. \$109 Save \$10 Take-with Price

Save On 3-way Modular Stereo System With Speakers

Enjoy the great sound of this AM/FM stereo receiver with 8-tr player and 2-speed phonograph! Twin speakers included.