

Jenny Wiley State Park Dedication, Saturday, 2 p.m.

Read Each Week by More Than 4,500 Families

Floyd County Times

SPEAKING OF AND FOR FLOYD COUNTY

Volume XXXIV, No. 49

10c Per Copy

THURSDAY

PRESTONSBURG, KENTUCKY

September 20, 1962

This Town-- That World

PICKETS CLOSE MANY FLOYD TRUCK MINES

CARD, ISSUE WAGE DISPUTE ARE INVOLVED

Contempt Proceedings Set In Floyd Circuit Court; Reed Notes Wages Lost

Voiding of the welfare cards of U.M.W.A. members employed by coal operators who are delinquent in paying the contract royalty...

Beaver Valley Kid's Day Slated by Kiwanis Club

Beaver Valley Kid's Day sponsored by the Kiwanis Club of Beaver Valley, in cooperation with Kiwanis International and the Floyd county schools...

TIMES SUED FOR \$50,000

Melvin Woman Alleges Reputation Is Injured By Newspaper Account

Ella Chullen, of Melvin, last Thursday filed suit in the Floyd circuit court alleging that a news-story in The Floyd County Times was libellous and damaging to her good name, credit and reputation.



Mayor George P. Archer cuts the "birthday" cake at Arnold Avenue Church of Christ as the pastor, Harold Dicks, looks on.

LODGE, PARK BEING PREPARED FOR DEDICATION ON SATURDAY

DENTAL GROUP SLATES MEET

At New Lodge Here; Prestonsburg Motels See No Week-End Vacancies

When the dedication crowd is gone, late Saturday, personnel at the new lodge at Jenny Wiley State Park will begin preparing for another sizeable gathering.

C. & O. Loses on Bid To Suspend Service To Area Passengers

The Kentucky Railroad Commission voted unanimously, September 12, at its Frankfort meeting to deny the Chesapeake & Ohio Railway Company permission to discontinue the last remaining passenger train serving the Big Sandy valley.

JENNY WILEY PARK TO JOIN VAST SYSTEM

Governor To Deliver Dedicatory Address; Day's Program Told

Work was being continued into the night hours this week as the new lodge and other accommodations at Jenny Wiley State Park were being readied for dedication Saturday afternoon.

HORN PICKED FOR USDA JOB

Food Stamp Program Head Named Supervisor Of Floyd, Other Counties

Carl R. Horn, supervisor of the Floyd Food Stamp office since the pilot stamp program was initiated here last year, has been employed by the U. S. Department of Agriculture as project supervisor of the Food Stamp Program in this and other counties.

GRAND JURORS PROBE RUM RING POSSIBILITY

The liquor situation in Floyd county and means of bootlegging constituted the major portion of the final report filed by the grand jury with Circuit Judge Edward P. Hill upon its adjournment Tuesday.

LICENSE LOST BY MARIANO

Shortage Charge Results In Revocation; Findings Notes Beer Distribution

Frank Mariano, Elkhorn City malt beverage distributor, pleaded guilty, Tuesday, of last week, to charges preferred in a citation issued by A. B. Meade, malt beverage administrator, and was penalized with a revocation of his license.

NAME CIVIL TERM JURORS

Current Criminal Term Ends Sept. 29; Docket Of Civil Cases Slated

The Floyd circuit court will jump directly from the current criminal term, which ends September 29, into a civil session beginning October 1. For the civil term the following have been listed as jurors:

INDICTMENTS CHARGE TWO

In Death of Children; Coal Firm Pays Fine For Stream Pollution

Two persons were named in indictments reported Tuesday, charging them with voluntary manslaughter as the result of the deaths of two Floyd children after having been hit by autos.

AUTO MISHAP KILLS HALE

Blue River Native Dies At So. Whitley, Indiana; Rites Conducted Tuesday

Henry L. Hale, 23, formerly of Blue River, was instantly killed Saturday at 3 a.m. when the auto he was driving struck the head of a bride at South Whitley, Indiana.

Court House Happenings

Two Pike county coal companies - Utility Esco Coals, Inc. and the Johnson Mining Company - were named in indictments accusing them of stream pollution.

Times Explains Story Emphasized Acquittal

The news account which appeared in the issue of September 14, 1961, relative to the acquittal of certain persons charged with an offense was not intended on the part of The Times as a statement that the alleged offenders were guilty of violating any law.

POLICE JUDGE HITS SALE HERE OF 'SKIN-BRACER'; SAYS SELLERS TO KNOWN DRUNKS RESPONSIBLE

Police Judge Walt Hale said this week that not all the intoxicants sold and drunk in Prestonsburg come from bootleggers, and he strongly censured retailers who sell face lotions containing alcohol to persons who are drinking or who are known drunks.

EXTENSION CLASSES SET BY EASTERN AT MARTIN TO ACCOMMODATE STUDENTS

Extension Classes Set By Eastern At Martin To Accommodate Students

The extension classes scheduled by Eastern State College at Morehead will be shifted to Martin, Friday evening, it was said this week. The move is being made in an effort to accommodate more students.

DONALD BARNETTE VICTIM OF EVANSTON MINE MISHAP; BURIAL MADE IN VIRGINIA

Donald Barnette, 39, of Evanston, died Thursday last week at Evanston as the result of a mine accident.

POLICE JUDGE HITS SALE HERE OF 'SKIN-BRACER'; SAYS SELLERS TO KNOWN DRUNKS RESPONSIBLE

Police Judge Walt Hale said this week that not all the intoxicants sold and drunk in Prestonsburg come from bootleggers, and he strongly censured retailers who sell face lotions containing alcohol to persons who are drinking or who are known drunks.

EXTENSION CLASSES SET BY EASTERN AT MARTIN TO ACCOMMODATE STUDENTS

The extension classes scheduled by Eastern State College at Morehead will be shifted to Martin, Friday evening, it was said this week. The move is being made in an effort to accommodate more students.

**Dr. Joe T. Hyden**  
**DENTIST**  
 Office Hours: 9 a.m. to 5 p.m.  
 and by appointment.  
 Office in Adams bldg.  
 Opposite Martin Theatre  
 Martin, Ky. Phone BU 5-3209

**Local Serviceman  
 in 'Aggressor' Maneuver**  
 Fort Hood, Texas—Army Specialist Four Joe R. Skeens, son of Mr. and Mrs. Jay Skeens, West Prestonsburg, Kentucky, was one of 3,500 "Aggressors" who recently tested the combat readiness of the 1st Armored Division at Fort Hood, Texas, in Exercise Iron Fist. The 18-year-old soldier attended Prestonsburg high school.

# MRS. WILEY, PIONEER HEROINE, NOW FAMOUS IN EASTERN KENTUCKY LEGEND AND HISTORY

One hundred seventy-three years ago Mrs. Jenny Wiley, wife of a Virginia pioneer, was captured by Indians on Walkers Creek in the present Bland county, and carried captive into the Big Sandy valley. She escaped in a few months but the story of her heroism remained little more than a family legend until a decade ago.

Today, an Eastern Kentucky state park, one of the state's most popular, honors her name. Saturday a lodge, second only to one in Kentucky, will be dedicated in the park that bears her name.

Mrs. Wiley, the obscure borderland heroine for a century and three-quarters, but whose story is now told and retold by hundreds of thousands, moved to the Big Sandy valley in the years succeeding her captivity, and, with her husband, Thomas Wiley, pioneered Johnson county, then Floyd. The state has erected a magnificent marker at her grave.

Hezekiah Sellards, an Irish immigrant, father of Jenny Wiley, had moved from the Shenandoah valley down to Ab's valley, a tributary of Walker's Creek in the early 1770's. Another daughter, Elizabeth, and two sons, Samuel and John, were in the household on the Virginia border. Elizabeth later married John Borders, and with her brother, Samuel, settled in the present Lawrence county. John founded the Sellards Settlement on Buffalo Creek in 1794.

Jenny Sellards married Thomas Wiley and they started a pioneer home on Walker's Creek, not far from that of her brother-in-law, John and Elizabeth Borders. Across a low hill from the Wiley homestead lived the redoubtable frontiersman, Mathias Harman. Born to Jenny and Thomas there in the Virginia woods were four children, their names unknown to us. A 15-year-old brother usually stayed with the Wileys when Thomas was away on trips to the settlement store.

The day of Mrs. Wiley's capture by the Indians and the massacre of her children and brother is fixed as October 1, 1789, by reports of the Southwest Virginia military to the governor.

On that day Mrs. Wiley sat in the home weaving. Her four children and brother were in the cabin. Thomas was away on one of his trips to the nearest settlement and would not be back until the next day.

John Borders warned her that he suspected Indians were in the neighborhood for he had heard the limited hooting of owls all day. This was a favorite Indian method of communication while stalking a settlement or lonely cabin. Mrs. Wiley promised Borders that as soon as her weaving was done she would bring the children and stay the night in his cabin.

Borders had been gone only a short time when Indians, lead by a Cherokee chief, Cap John, broke into the cabin, killed three of the children and her brother. They spared a babe in arms only because

Black Wolf, a Shawnee medicine man interceded. Plundering the cabin, they set fire to it and took Jenny, who carried her infant child, into the headstreams of the Tug River valley and following down that stream, crossed the Big Sandy by swimming near the present Louisa.

In the meantime, Mathias Harman had been informed of the massacre by Thomas Wiley who had returned to his cabin site the next day. A posse of woodsmen, consisting of 12 nearby pioneers, was organized to attempt a rescue. Harman pressed hard on the rugged trail through Southwest Virginia, down the Tug River.

The original plan of the savages, when they had left their encampment in the western woods, was to sjeal quietly upon the cabin of Harman and kill him for they feared him more than any other man on the frontier. Actually, when they fell upon the Wiley home, they thought it was Harman's family they were destroying and only learned otherwise when they were plundering the cabin. Knowing that they had failed in their original purpose, they fled hurriedly and with great caution toward the Ohio.

Down Tug the motley band of 11 Indians, led by Cap John and Black Wolf, sought by every bit of woodcraft they knew to hide their trail. A Delaware member of the band was placed in the rear to watch for pursuers.

Mrs. Wiley was with child and the weight of the unborn one and the infant she carried in her arms reduced her to almost unbearable fatigue. The savages had indicated all along that they wanted to kill the infant but Black Wolf, who was taking an interest in the captive, forestalled its death.

On the Tug River trail the band was alerted to the close pursuit of Harman and his frontiersmen. The Indians stopped, held a short consultation. When it was over the Cherokee chief, Cap John, came back to Mrs. Wiley, took the infant from her arms, and dashed its brains out against a beech tree. This was near a large tributary of the river and it was ever after known as Jennie's Creek. The beech tree stood for decades and in the years following in which Mrs. Wiley was living at the present River, Johnson county, she came back to the place and pointed out the tree to her husband and others.

Down Tug River the Indians fled with their captive and coming to the Big Sandy at the present Louisa, they found it in flood. Two savages took Mrs. Wiley by the arms and swam over with her as they had done when crossing the upper Tug days earlier. When all were over the stream, they continued down the Big Sandy to its mouth, and down the Ohio to the mouth of the Scioto River, near the present Portsmouth, Ohio. They had been nine days on the trail. They could not cross the mighty and rising Ohio and they dragged their captive to the mouth of the Little Sandy River where they encamped.

Meanwhile, Harman and his frontiersmen, coming to the Big Sandy, found it impossible to cross with their horses and they decided to give up the chase.

Mathias Harman and his associates, who had been exploring the Big Sandy country for years and who had built a cabin at the mouth of Johns Creek in 1755 only to have it burned by the Indians, had decided months before the Wiley family massacre to found a settlement in the valley. Immediately following the capture of Mrs. Wiley or in a few weeks subsequent, he erected a fort about a quarter-mile north of the mouth of Johns Creek. The settlers called it Harman's Station. Mrs. Wiley did not know of the founding but knew of the Harman plans.

The Indians took Mrs. Wiley up the Little Sandy River and after many encampments, settled down on the Cherokee Fork of Blaine Creek. Here she was assigned to a small cave in which her child was born. When the child was a few weeks old the Indians came one day and took it to a pool in the creek. Here they planned to give it a warrior's test. If it cried it would never grow up to be a warrior. If it did not the babe would become a great brave. The babe cried and an Indian killed it as they killed the other babe on Tug River.

Sometime in the winter the band came to Little Mud Lick Creek falls in the present Johnson county and Mrs. Wiley was held in a large cave. Here she became a slave domestic, cooking, dressing skins and mending clothes. Black Wolfe regarded her as his property.

One day the Indian band was visited by another group of Indians who had a captive young man. No one, not even Mrs. Wiley, knew his name. The savages burned him to death on a plateau above the cave. Stirred by the scene of torturing the captive to death, they decided over Black Wolfe's protests, to burn Mrs. Wiley and brought her to the plateau. Her resignation in the face of impending doom so impressed Cap John that he bought her from Black Wolfe for a few jewelry trinkets he had stolen on the Virginia bor-

der. Taking possession of her, he took her back to the cave.

That night Mrs. Wiley heard guarded conversation between the Indians relative to a white settlement nearby. They talked chiefly in signs, fearful that she would understand. She did. She felt sure Harman had founded his settlement at the mouth of Johns Creek and she began to formulate plans to escape.

The next morning Cap John came to the cave, tied her to a great stone with deer thongs. He told her he was going with the other Indians on a hunting expedition and that in a few days the whole band was going to the Little Tennessee River where Mrs. Wiley could assist his other wives in making shirts.

When the Cherokee chief went away, it began to rain and the thongs stretched after becoming wet. Mrs. Wiley freed herself, waded down Little Mud Lick Creek to its junction with Big Mud Lick. Where that stream joins Big Paint Creek, she began to wade up it to the mouth of a large tributary, now known as Jenny's Creek. It became dark and she sought refuge in a large hollow log.

The next morning she continued on up Jenny's Creek, turned left up the Lick Fork, traveled up it and over on to Bear Hollow, descended it to Little Paint Creek, followed it to the Big Sandy River. Following a path up the side of the stream she came to where she could see the Harman Settlement.

Henry Skaggs sent her over the river on a raft hastily constructed from mulberry logs but just in time. The savages, led by Cap John, came out on the river's bank but Skaggs pushed hard on his craft and landed safely on the other side.

Recently discovered papers in the Draper's Papers microfilm at the Kentucky Historical Society, Frankfort, reveal that Mathias Harman had gone downstream to the Vancouver's Station at the present Louisa "to drink whiskey." A messenger informed him of Mrs. Wiley's escape and he returned to the fort at the mouth of Johns Creek.

Mrs. Wiley escaped, according to a deposition later filed with the Virginia authorities, "in the late winter." This was probably in March or April, 1790.

Mrs. Wiley was escorted back to Virginia by the Harman frontiersmen and was reunited with her husband.

The Wiley family immigrated to the Big Sandy valley in 1800, settled at the present River postoffice. Thomas died in 1810. She survived until 1831.

They lie buried in a cemetery on the old Wiley homestead, overlooking the river. A monument, with bronze lettering, was erected

## FOR CONVENIENCE

This spring and summer you can find yourself doing less work. Why? Because with air conditioning dirt and dust will be filtered out of your home to leave walls, drapes and furniture cleaner.

Let us give you a free estimate on air conditioning, heating, plumbing and electric installation and repair.

**Wholesale Appliance Service, Inc.**

**Ernest B. Osborne, Mgr.**

Tel. TU 6-2515 — Prestonsburg, Ky.

TIMES WANT ADS PAY!

## FOUR REASONS

Why you, the voter, should vote for

**WILSON WYATT**

and

**CARL PERKINS**

Democrats, on November 6th, 1962

I. Wilson Wyatt and Carl Perkins have worked vigorously for **NEW INDUSTRY** and **PUBLIC WORKS** in Kentucky.

II. Senator Morton, Wyatt's Republican opponent, voted against the Area Redevelopment Act, which would have created many jobs for Eastern Kentucky's unemployed people. During the Eisenhower administration Senator Morton also voted against construction of the Fishtrap reservoir.

III. The record is full of votes by Sen. Morton that were in opposition to the needs and wishes of Kentuckians.

IV. Kentucky needs Democrats in Congress to assist a President who is a Democrat.

**DEMOCRATS FOR WYATT AND PERKINS**

(Pol. adv.)

USE TIMES WANT ADS FOR AMAZING RESULTS!

## THANKS, GOVERNOR COMBS

★

The people of Floyd county and Eastern Kentucky are deeply appreciative of your efforts in behalf of Jenny Wiley State Park. You are to be congratulated upon your accomplishment in the development of the region's finest scenic and recreation attraction.

★

**MARVIN MUSIC**

## THANKS, BERT

★

FOR A BETTER EASTERN KENTUCKY

★

**Francis**

STORES

PRESTONSBURG, KY.

SEE THE EXCITING

# New 1963 Chevrolets!

ON DISPLAY

FRIDAY and SATURDAY, SEPTEMBER 28-29

Door Prizes - Gifts For The Children

Cigars For Men - Carnations For Ladies.

You are cordially invited to visit us and inspect the Twentieth Century's most outstanding automobiles.

**Chev. & Buick, Music-Colvin Inc.**

South Lake Drive • Prestonsburg, Ky.



# FLOYD SCHOOL MONEY ALLOTMENT INCREASED

The amount of money allotted under the Minimum Foundation Program to Kentucky schools this year ranks fourth from the top, surpassed in funds allocated only by Jefferson, Fayette (including the city of Lexington) and Pike counties.

The total 1962-1963 allotment for Floyd is \$2,556,013, which represents an increase of \$337,811 over the previous year's allotment.

That \$337,811 increase comes to Floyd county because of the higher qualifications of teachers, and every cent will be spent on teachers' salaries," County Superintendent Charles Clark said this week.

A record \$105,931,213 has been tentatively allotted to Kentucky's 200 school districts under the Foundation Program, an increase of \$10,782 over last year's allotment.

Butler said local school districts will be required to raise through local effort \$47,875,144 as their share of the total cost of the Minimum Foundation Program of education for the state's public schools. This is an increase of \$516,022 over last year.

## Southern Bell Manager Notes Communications Of Future Being Shaped

The future of our country's communications is being shaped by the knowledge now being gained by the Telstar satellite," Guy Hise, Paintsville, manager of Southern Bell Telephone Company told the Paintsville Kiwanis Club, Tuesday evening at Martin.

Telstar, the telephone company's space satellite has been in orbit since July 10.

Hise has already met our most optimistic expectations in successfully relaying telephone, telegraph and television messages across the Atlantic," Hise said.

On a one-half size model, the Southern Bell manager pointed out the complicated make-up and different functions of the satellite. He said the immediate future assignment of Telstar is to continue to collect scientific data.

Although this phase of the experiment is of lesser interest to the general public than the first three days of live overseas television and related tests, it will be of equal worth in telling scientists meaningful things about space," Hise added.

President Joan Snodgrass presided at the meeting of the club and the speaker was introduced by Glenn Spadin, chairman of the program committee.

## New Officer Candidate Program Is Presented, Says Local Recruiter

Outstanding officer candidate opportunities are now available for qualified college graduates in the Army's infantry and artillery schools," advised a recent statement from the Department of the Army.

This new addition to the Army's recruiting program—officially entitled, "Officer Candidate School Enrollment Option for Male Civilian Applicants"—now makes it possible for qualified young men to receive appointments to Officer Candidate School prior to their enlistment," commented Army recruiter, Paul Whittemore. "To qualify," he explained, "applicants must be at least 18 years and six months of age, but not over 27. They must have a baccalaureate or higher degree from an accredited non-Army ROTC college or university. An exception to this requirement," Sgt. Whittemore added, "is made for graduates of ROTC schools who, for valid reasons, did not participate in their alma mater's ROTC program." Also required are a two-year enlistment in the Regular Army and successful completion of basic combat training before starting OCS. "And, of course," he continued, "a thorough physical examination is necessary, as well as the administration of the Army Officer Candidate Test."

"At present," he concluded, "Officer Candidate courses, 23 weeks in duration, are available at the US Army Infantry and Artillery schools and there'll be an increase of additional openings later this year."

## Price Man Is Listed With Incorporators Of Breathitt-Co. Bank

Eight persons, among whom was Jerry F. Howell, Price businessman, are listed as incorporators of Breathitt county's second bank, it is announced. The new bank, incorporated with a capital of \$100,000, will be located in Jackson.

Seven other persons were listed as original incorporators of the institution, including Circuit Judge Ervine Turner, Jackson, also designated as process agent; J. Douglas Graham, Campton; Pryce Hounshell, Vanceleave; and Jeff D. Howell, Green Rose, Dr. F. C. Lewis and Marie R. Turner, Breathitt county school superintendent, all of Jackson.

Backers of the new bank hope to open for business with a month.

**DECAY-RESISTANCE**  
Lexington, Ky.—Rot resistance varies considerably among tree species, says James Newman, UK Cooperative Extension Service forester.

**CLEAR-OVER-BLACK PLASTIC**  
Lexington, Ky.—A layer of clear plastic mulch above a layer of black plastic—acting as an extra heat-retainer—was "highly satisfactory" last season in vegetable work.

## Engagement Announced To Petroleum Engineers

Mrs. Elizabeth Henderson Goble, 2701 Lowell Ave., Louisville, is announcing the engagement and forthcoming marriage of her daughter, Mary Loretta, to Mr. Donald Preston Buckalew, son of Mr. and Mrs. Arnold Preston Buckalew, 308 Washington Street, Hartford, Ky. The wedding will take place at Duncan Memorial Chapel, Floydsville, Ky., on October 6.

Miss Goble, formerly of Prestonsburg, is the daughter of William D. Goble, of Mobile, Alabama, and the granddaughter of Mrs. Cecil Kendrick and Mr. Kendrick, of Prestonsburg. She was graduated from Prestonsburg high school and received her degree with the '62 class of Western Kentucky State College. Mr. Buckalew is also a 1962 graduate of Western State College.

**FAIL SOIL TEST**  
Lexington, Ky.—Soil testing, the method by which a farmer determines what his land needs in fertilizer, is a good chore for the fall.

Dairy Herd Improvement Association supervisors will have their short course at the UK Dairy Products building at UK, October 15-20 inclusive. Registration is 9 a.m. at the Dairy Products building October 15.

Times Want Ads Get Results — Use Them!

# CONGRATULATIONS, GOVERNOR

ON A JOB WELL DONE

We are all proud of what has been accomplished for Floyd county and our area at Jenny Wiley State Park.

## THE BANK JOSEPHINE

Prestonsburg and Allen

## BUYING A NEW CAR?

FINANCE IT THRU THIS BANK AND SAVE ENOUGH MONEY TO PAY FOR YOUR AUTO INSURANCE

# THE BANK JOSEPHINE

Prestonsburg-Allen, Kentucky

Deposits Insured To \$10,000 by Federal Deposits Insurance Corp.

Member Federal Deposit Insurance Corporation

# KROGER CUTS PRICES

Fresh <b>Pork Steak</b> lb. <b>55¢</b>	Fresh <b>Pork Roast</b> Picnic Style lb. <b>29¢</b>
--	---

Whole <b>Baking Hens</b> 4-6 lb. avg. .... lb. <b>39¢</b>	Tenderay <b>Boston Roll Roast</b> .. lb. <b>89¢</b>
<b>Sliced Bacon</b> ..... lb. <b>59¢</b>	<b>Meat Loaf</b> 80% Ground Beef, 20% Ground Pork lb. <b>59¢</b>

**Cottage Cheese** Kroger, Small or Large Curd **2 lb. Carton 55¢**

<b>Tuna</b> Van Camp Chunk No. 1/2 can <b>25¢</b>	<b>Biscuits</b> Dixie Pride Sweet and Buttermilk 13 cans <b>\$1</b>
<b>Oxydol</b> Detergent Giant pkg. <b>69¢</b>	<b>Colgate</b> Toothpaste Family Size Tube <b>49¢</b>
<b>Shortening</b> 3 lb. Tin <b>55¢</b>	<b>Pies</b> Country Club Apple, Cherry, Peach Each <b>29¢</b>
<b>Towels</b> Scott 5 Reg. Rolls <b>\$1</b>	<b>Tissue</b> Scotties White and Assorted Colors 4 For <b>\$1</b>

**Pinto Beans** with coupon **4 lbs. 29¢**

<b>Golden Ripe Bananas</b> 2 lbs. <b>25¢</b>
<b>Fresh Strawberries</b> 3 pts. <b>\$1</b>

1 VALUABLE COUPON 1  
50 Bonus Top Value Stamps  
with each coupon and purchase of \$5 or more  
Items prohibited by law exempt for offer at Kroger  
Coupon expires Sat., Sept. 22, 1962

2 VALUABLE COUPON 2  
100 Bonus Top Value Stamps  
with each coupon and purchase of Any Boneless Beef Roast  
Coupon expires Sat., Sept. 22, 1962

3 VALUABLE COUPON 3  
50 Bonus Top Value Stamps  
with each coupon and purchase of Sliced Italian Bread Sesame, Potato Loaf or Sliced Italian Bread Plain  
Coupon expires Sat., Sept. 22, 1962

4 VALUABLE COUPON 4  
50 Bonus Top Value Stamps  
with each coupon and purchase of Fiesta Bar Cake  
Coupon expires Sat., Sept. 22, 1962

6 VALUABLE COUPON 6  
SAVE 20c  
Pinto Beans ..... 4 lb. bag **29¢**  
with this coupon  
Coupon expires Sat., Sept. 22, 1962

5 VALUABLE COUPON 5  
100 Extra Top Value Stamps  
with each coupon and purchase of \$1.00 or more Produce  
One Coupon per family at Kroger  
Coupon expires Sat., Sept. 22, 1962

## Annual SALE



## Hosiery for women

New Superior Construction For Fall

## DRESS SHEERS

SEAMLESS AND SEAMED WALKING SHEERS SEAMED

REGULAR PRICE \$1.35 PER PAIR

BUY 3 PAIRS FOR **\$3.00**

YOU SAVE \$1.05 with this purchase SINGLE PAIR SALE PRICE \$1.09

SERVICE WEIGHT SEAMED TWO WAY STRETCH TOP COOL COTTON SOLE

REGULAR PRICE \$1.80 PER PAIR BUY 3 PAIRS FOR **\$3.30**

YOU SAVE \$1.20 with this purchase SINGLE PAIR SALE PRICE \$1.19

I. RICHMOND CO. PRESTONSBURG, KY.

TIMES WANT ADS PAY!

Dr. R. M. Wilhite, Jr.

Chiropractor  
Office Phone, 789-4631  
Residence, 789-4044  
PAINTSVILLE, KY.











# FLOYD COUNTY WAITED 160 YEARS

## For A Governor

TO RECOGNIZE THE NEEDS OF EASTERN KENTUCKY!

BERT COMBS, AT A COST OF APPROXIMATELY \$2,000,000, HAS TRANSFORMED JENNY WILEY STATE PARK INTO THE WONDERFUL RECREATION LAND AND TOURIST ATTRACTION FLOYD COUNTY AND EASTERN KENTUCKY NEEDED.



Hon. Bert Combs, Governor of Kentucky, a resident of Floyd county, and a native of the mountains. He knew the needs of the region; he did something about those needs.

THIS NEW 36-ROOM, \$775,000 LODGE  
AT JENNY WILEY STATE PARK  
WILL BE DEDICATED AT  
2:00 P.M., SATURDAY, SEPTEMBER 22  
EVERYONE'S INVITED



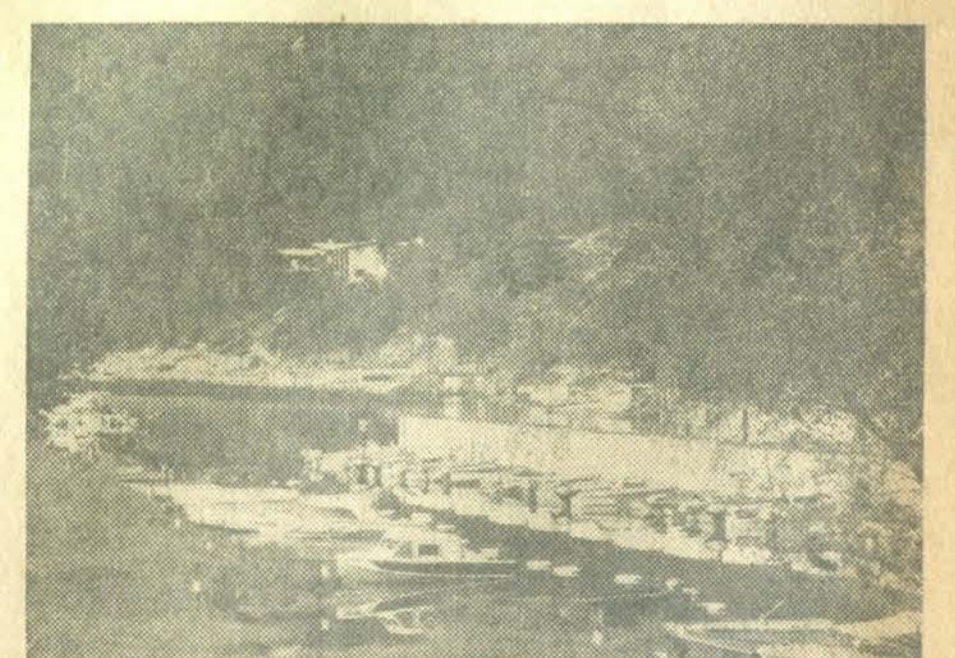
The people of this section have long needed and wanted a recreation area equal to that provided for other Kentuckians.



Tourists with dollars to spend will be drawn to Floyd county to see the striking new showplace lodge at Jenny Wiley State Park. Visitors drawn by this resort will spread word of the beauty of our mountains.



Like the glamorous lobby and dining room, the three guest units, with 12 rooms each, have the finest furnishings. A handsome swimming pool for lodge guests will help draw tourists and tourist money into our area.



This fine resort lodge and the many other improvements at Jenny Wiley State Park are possible because Floyd county, after 160 years, finally has a Governor who is bringing home the bacon for Floyd county and Eastern Kentucky.

Jenny Wiley State Park is just one of the many things Bert Combs has done to help the people of Floyd county and Eastern Kentucky. For bringing us the Eastern Kentucky Turnpike, improved schools, the food stamp plan, the community college, new roads,

welfare aid for our needy—and for bringing opportunity to Floyd county and Eastern Kentucky . . . We, his Floyd county and Eastern Kentucky friends, are deeply appreciative of his accomplishments in our interest.

# THANK YOU, BERT COMBS!

We are authorized to announce

# DR. J. H. ALLEN

of Langley, Ky., as a candidate for

## FLOYD COUNTY BOARD OF EDUCATION

District No. 2

at the November, 1962, election.

## PYRAMID HOSPITAL PLAN

Enrollment for Pyramid's new 5-Way Guaranteed Renewable policy will be continued for another week because we could not reach all residents in your community last week. Make sure we don't miss you. Be sure you get full information on this exciting new policy. When you get our call, make an appointment.

**BE SURE OUR LICENSED REPRESENTATIVE TELLS YOU HOW THIS ONE, LOW-COST POLICY HELPS PAY FOR COVERED DOCTOR'S CALLS, SURGERY, HOSPITAL AND SPECIAL SERVICES!**

- ★ **BIG CASH BENEFITS** for Doctor's Visits at home, doctor's office, hospital or clinic! Or
- ★ **BIG CASH BENEFITS** for Surgery performed in or out of the hospital.
- ★ **BIG CASH BENEFITS** for Hospital Room—plus specified amounts for operating room, anesthetics, X-ray, laboratory examinations, medicines, drugs and dressings, ambulance service, blood transfusions, oxygen, iron lung, etc.
- ★ **BIG CASH BENEFITS** for special services not requiring hospital confinement... such as X-ray examinations, laboratory or pathology tests, emergency or operating room, tetanus antitoxin, splints or casts, electrocardiograms, etc.
- ★ **BIG CASH BENEFITS** for childbirth, complications of pregnancy and nurse expense at home due to injury.

SEE if this amazing, all-in-one, low-cost policy isn't the protection you've been waiting for. It's Guaranteed Renewable for Life! A minimum of limitations and waiting periods!

**GET TOP PRIORITY ON OUR ENROLLMENT SCHEDULES! ISSUED TO FOLKS OF ALL AGES WHO QUALIFY by PYRAMID LIFE INSURANCE COMPANY**  
Kansas City 1, Kansas

**BE SURE TO MAKE YOUR APPOINTMENT WHEN YOU GET OUR CALL. FIND OUT ABOUT PYRAMID'S UP-TO-THE-MINUTE PROTECTION. DON'T WAIT UNTIL IT'S TOO LATE!**

**TO MAKE SURE PHONE TU 6-2373 NOW!!**

# THANKS, GOVERNOR COMBS!

★

Your efforts to improve Jenny Wiley State Park are appreciated. Thanks, again, from the depth of our hearts!

★

## HALL-MUSIC INSURANCE AGENCY

Prestonsburg, Ky.

### NOTICE

KFWR-F-68

Re: Experimental use of gill nets and trammel nets in Herrington Lake and Dewey Reservoir. Relates to KRS 150.010, 150.025, 150.175, 150.450 and 150.580.

Pursuant to authority vested in the Department of Fish & Wildlife Resources and the Department of Fish & Wildlife Resources Commission by KRS 150.025 the following regulation is adopted:

1. Any person may take, by the use of licensed gill nets and trammel nets, any "rough fish," as defined in KRS 150.010, subsection 17, from the impounded waters of Herrington Lake, located in Mercer, Boyle and Garrard counties, and Dewey Reservoir, located in Floyd county. These nets may NOT be fished above the first shoal or riffle of any tributary stream entering either Herrington Lake or Dewey Reservoir. The period during which these nets may be fished is 1 November, 1962, through 31 March, 1963.

2. There is no restriction upon the length of any net, but all nets fished must have a mesh size of at least three and one-half inches bar measure. Nets with meshes smaller than three and one-half inches bar measure are considered illegal fishing gear.

3. Each person actually fishing any net or assisting in the fishing of any net must have in possession a commercial fishing license. A seine tag must be attached to each 100 feet of net, or part thereof, in a manner and in such a position on the gear that Law Enforcement officers can, without undue difficulty, determine whether or not the fishing gear in use or in possession has been properly licensed and, in effect, that the operator or possessor of any net is, at the time of inspection, complying with the provisions of this regulation.

4. Any species of fish taken by any net other than "rough fish" must be returned immediately to the waters from which taken, without undue injury.

**MINOR CLARK**  
Commissioner  
Department of Fish & Wildlife Resources

Approved by the Department of Fish & Wildlife Resources Commission at a meeting held at Frankfort, Kentucky, on the 13th day of August, 1962.

**DR. JAMES SALATO**  
Chairman  
Department of Fish & Wildlife Resources Commission

Filed Legislative Research Commission, August 24, 1962.

**ROBERT CHENAULT**  
Regulations Service

it

**BOYD PARTICIPATES**

Fort Benning, Ga. — Army Sergeant First Class Jess W. Boyd, son of Burl Boyd, of Hueysville, Kentucky, recently participated with more than 70,000 Army and Air Force personnel in Exercise SWIFT STRIKE II, a two-week U. S. Strike Command maneuver in North and South Carolina.

Sergeant Boyd is assigned to the 2nd Infantry Division's 2nd Administration Company regularly stationed at Fort Benning, Georgia. He entered the Army in 1949. Boyd is a graduate of Maytown high school, of Langley.

### MASTER COMMISSIONER'S SALE

FLOYD CIRCUIT COURT  
CR 3954

First Federal Savings & Loan Assn.,  
Paintsville, Ky., Plaintiff,  
Vs.: NOTICE OF SALE  
Ambers Roop & C., Defendant.

By virtue of a judgment and order of sale of the Floyd Circuit Court rendered and entered at the September term, 1962, in the above styled cause I shall proceed to offer for sale at the Courthouse door in Prestonsburg, Kentucky, to the highest and best bidder, at public auction, on the 1st day of October, 1962, at 10 o'clock, a.m., same being the first day of the regular term of the Floyd County Court, upon a credit of six (6) months, the following described property, to-wit:

Lying and being on the East side of the Big Sandy River, (near Tram, Kentucky) 1st tract, beginning at a stake in the south line of Ky. and U. S. Highway 23 and in line of lot No. 4; thence across the bottom with line of Lot No. 4, S 10 45 W to a stake at low water mark of Big Sandy River; thence down the river N 80 W 77 feet more or less, to a stake at low water mark and corner to lot No. 2; thence leaving the river and turning across the bottom with line of Lot No. 2, reversed, N 12 E to a stake in line of Ky. and U. S. Highway 23; thence east with line of said highway a distance of 77 feet, more or less, to the beginning. The oil and gas, and drilling and production and marketing rights are excepted.

Tract No. 2, beginning at a stake in South line of Ky. and U. S. Highway 23 and corner of land of James S. Layne; thence across the bottom with said line to a stake at low water mark of Big Sandy River; thence down with low water mark of the river a distance of 77 feet more or less to a stake, and southeast corner of lot No. 3 of Bertram Layne; thence leaving low water mark of the river and running across the bottom with said Bertram Layne, N 12 E to a stake in South line of Ky. and U. S. Highway 23; thence with the line of same a distance of 77 feet more or less to the beginning. The oil, gas and rights to drill, develop and market are excepted.

Said property will be sold to satisfy a judgment against defendants in favor of plaintiff for \$7,743.11 with interest from August 1, 1962, until paid.

Purchaser may elect to pay cash in lieu of executing bond.

For the purchase price the purchaser must execute bond with approved surety or sureties, bearing legal interest from the day of sale until paid and having the force and effect of a judgment with a lien retained upon said property as a further security. Bidders will be prepared to comply promptly with these terms.

Given under my hand, this 11th day of September, 1962.

**J. B. CLARKE**  
Master Commissioner  
Floyd Circuit Court

(Cost of adv. \$36.00)  
9-13-62

**Commonwealth of Kentucky**  
Department of Highways  
Notice To Contractors

Sealed bids will be received by the Department of Highways at its office, Frankfort, Kentucky, until 10:00 a.m. Eastern Standard Time on the 21st day of September, 1962, at which time bids will be publicly opened and read for the improvement of:

The Special Provisions for Highway Projects financed with Federal Highway Funds apply on the foregoing project.

**FLOYD COUNTY, SP 36-96** The Wheelwright Junction-Wheelwright Road from approximately 0.3 mile south of Ky. 122 at Wheelwright Junction, extending southerly, a distance of 0.170 mile. Grade, Drain and Bituminous Concrete Surface Class I.

The attention of prospective bidders is called to the new rules and regulations which became effective August 1, 1962, relating to the qualification of contractors and the special provision covering subletting or assigning the contract. Proposals are available until 9:00 a.m. EASTERN STANDARD TIME on the day of the opening of bids.

NOTE: BID PROPOSALS WILL BE AVAILABLE ONLY TO CONTRACTORS WHOSE CERTIFICATE OF ELIGIBILITY INDICATES QUALIFICATION COVERING ONE OF THE MAJOR TYPES OF WORK INCLUDED IN PROJECT. A CHARGE OF \$2.05 WILL BE MADE FOR EACH PROPOSAL. REMITTANCE MUST ACCOMPANY REQUEST FOR PROPOSAL FORMS. THE RIGHT IS RESERVED TO REJECT ANY AND ALL BIDS AND TO WAIVE TECHNICALITIES.

Request for proposals should be made to: Mrs. Bettie Barker, Division of Contract Controls, Department of Highways, State Office Building, Frankfort, Kentucky.

Request for plans should be made to: Mr. Kavanagh Inman, Division of Design, Department of Highways, State Office Building, Frankfort, Kentucky.

Additional information may be obtained by contacting Mr. W. T. Judy, Director, Division of Contract Controls.

Department of Highways  
Frankfort, Kentucky  
August 30, 1962  
9-13-21

### Pike County Coal Firm Enjoined by U.S. Court From Violations of Act

Secretary of Labor Arthur J. Goldberg, acting through Solicitor Charles Donahue, has obtained a court order in the U. S. District Court at Pikeville, permanently prohibiting Mayo Holbrook and Rufus K. Holbrook, individually and as co-partners, doing business as Mayo Coal Company, a partnership, and Mayo Coal Company, a partnership, Colson, Kentucky, from violating the minimum wage, overtime and record-keeping provisions of the Fair Labor Standards Act.

The order, entered by U. S. District Judge Mac Swinford, was based upon legal action following an investigation by the Wage and Hour and Public Contracts Divisions of the United States Department of Labor's Lexington field office. The complaint alleged monetary violations affecting many employees of the firm employed in mining and producing coal for sale in interstate commerce.

In addition to banning minimum wage, overtime and record-keeping violations, the injunction obtained by the Labor Department specifically directs the firm not to ship or deliver in interstate commerce goods worked on by employees not paid as required by the Fair Labor Standards Act.

**FALL-PLANTING OF ALFALFA**

Lexington, Ky.—Alfalfa seedlings can be made in fall or spring, says George Corder, UK Extension Service soils specialist—but fall seedlings are somewhat more advantageous.

**Dr. R. M. Wilhite, Jr.**

**Chiropractor**

Office Phone, 789-4631  
Residence, 789-4044  
PAINTSVILLE, KY.

# THANKS, GOVERNOR COMBS

★

Your interest in Jenny Wiley State Park and the development of Eastern Kentucky is deeply appreciated.

★

## KENTUCKY MOTEL

Prestonsburg, Kentucky

## EDUCATION LEADERS ENDORSE CLARK PROGRAM

We, the undersigned school principals and administrators, are in complete agreement on the following statement:

(a) We feel that the Floyd County School System has had more than enough fussing and fighting, so we say, let's go forward in harmony to make our's the best school system in Eastern Kentucky.

(b) A great deal of progress has been made in the last two years, although Superintendent Clark has had to work hard to even hold the school system together.

**PROGRESS MADE RECENTLY:**

1. The highest teacher salaries paid in history, and paid on time.
2. Eight new contract runs to transport children who have heretofore had to walk great distances, as well as adding five additional school buses to our fleet.
3. The rural school lunch program which will start again next month, and which insures for each child a good lunch whether he has the money to pay for it or not.
4. A good start has been made on an ambitious building program. Additional class rooms have been constructed at Betsy Layne, Martin, McDowell and Prestonsburg. Let's go forward to finish the new building program as outlined by the State Department of Education: Mud Creek Elementary, Middle Creek Elementary, Vocational School at Garth, Wheelwright Elementary, and others as money is available.
5. Floyd county was selected as a pilot county for an adult education program. The board of education accepted the program on the recommendation of Superintendent Clark.
6. Two traveling teachers employed to instruct physically handicapped children in their homes.
7. The Board of Education and Superintendent Clark have worked very closely with the various colleges to encourage extension classes for our high school graduates and teachers.

Superintendent Clark has kept his eyes open to every opportunity to improve the Floyd County School System, and we believe he is determined to continue to do so, no matter what the odds. We know that Clark is a sober, dedicated and honest school man who deserves a chance to finish the next two years of his contract with a board willing to cooperate. It makes sense to us to elect board members who are willing to work together for the sake of our children, and for that reason, we, having looked over the board candidates, urge all Floyd countians to support and vote for Bill Wells, District No. 1, and for Dr. J. H. Allen, District No. 2. We are sure they are willing to support all the progress which has been made and that they feel, as we do, when we say, we need less "fussing and more schooling."

George L. Moore, Principal McDowell High School  
James W. Salisbury, Principal Martin High School  
Edwin Stewart, Principal Maytown High School  
Boone Hall, Principal Wheelwright High School  
Bernice Gearheart, Principal Garrett High School  
Woodrow Allen, Principal Prestonsburg High School  
James V. Bolen, Principal Wayland High School  
Delmon Howard, Principal Betsy Layne High School  
Wilbur Jamerson, Assistant Principal Wheelwright High School  
Gordon Moore, Assistant Principal Prestonsburg High School  
Virginia Jamerson, Principal Wheelwright Elementary School  
Marcus Owens, Principal Weeksbury Elementary School  
Winnie B. Johnson, Principal Melvin Elementary School  
Charles Martin, Assistant Principal, Garrett  
James O. Dingus, Assistant Principal, Martin  
Phillip Dingus, Principal Allen Elementary School  
Anna Lee Price, Assistant Principal, Wayland  
Estill Hall, Assistant Principal, McDowell  
Lexie Allen, Assisnt Principal, Maytown  
Lloyd Stumbo, Principal Prestonsburg Elementary School  
Elsie Stephens, Assistant Principal Prestonsburg Elementary School



**NOTICE**

The Floyd County Annual Staff will accept bids for pictures and publication of the Floyd County Annual at the staff meeting September 21, 1962, at 10 a.m., in the reading room of the regional library.

ANNA SUE STUMBO  
Sponsor  
Floyd County Annual

When efforts of Indians to capture a fort in Lincoln county, Kentucky, failed, the stockade was named Standing Fort. Later the name was contracted to Stanford, which is the present county seat.

**PROTESTANTISM IS LOSING GROUND, MINISTER WRITES**

"Protestantism today is losing ground—not so much in numbers as in spiritual effectiveness," writes the Rev. Norman Vincent Peale, widely-known clergyman, in a September Reader's Digest article, "Can Protestantism Be Saved?" He reports ministers are afraid to rock the boat.

"One of the most obvious symptoms of decline," he writes, "is the church's apathy in the face of the decaying society that surrounds it. The filth displayed on our newsstands, the sadism on television, the pornography in our books . . . the steady rise in juvenile delinquency and every other form of vice and crime."

He says the church should be fighting back at these and at the movement to do away with school prayers and drive religion out of all aspects of public life. He is critical of current seminary teaching, the ease with which Protestant churches accept members and of church mergers.

"When denominations merge," he writes, "they always have to com-

promise, to weaken their traditional stand. This watering-down inevitably fosters other weaknesses. Mergers, also, lead to the concentration of authority in fewer and fewer hands."

Protestantism can be saved, he says, by Christian men and women "who have strong beliefs and are not ashamed of them." In country after country, he concludes, "the communists are proving that wrong ideas, strongly held, can prevail over right ideas weakly held. So we Protestants must rise up and assert ourselves."

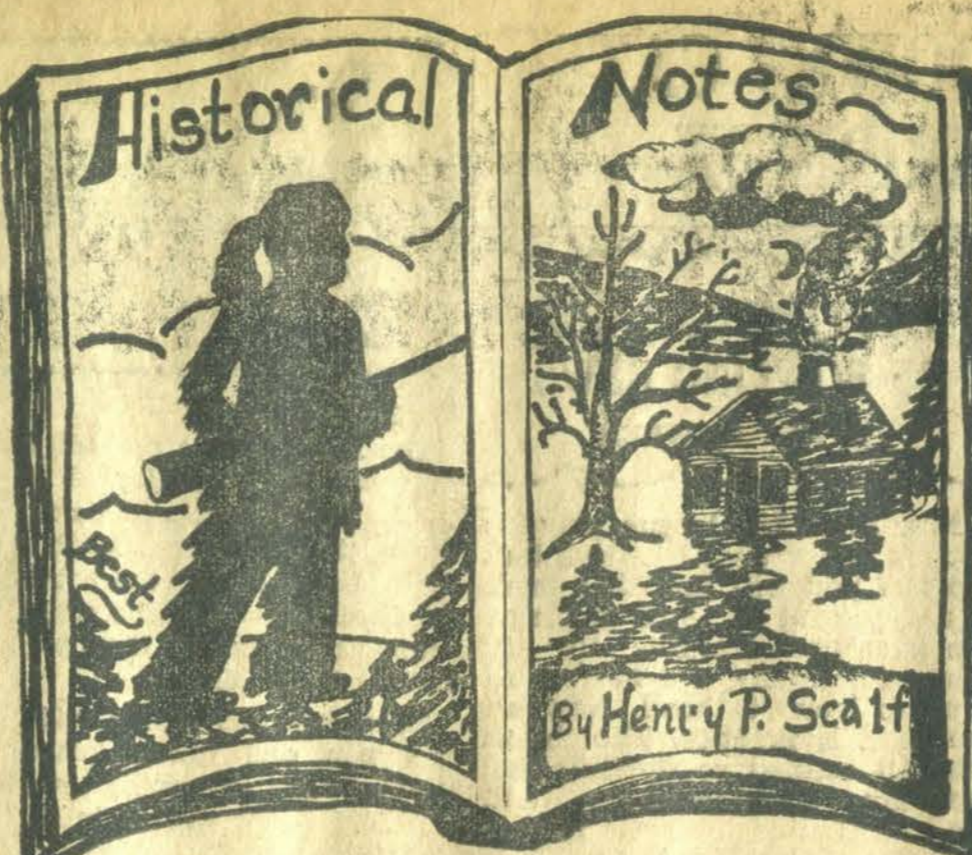
Dr. Peale is pastor of the Marble Collegiate Church in New York and author of "The Power of Positive Thinking" and other books.

**Memorial Meeting**

Prestonsburg Lodge No. 293, Independent Order of Odd Fellows, will sponsor a memorial service, with basket dinner, at the May cemetery, at the lower limits of Prestonsburg, on Sunday, Oct. 7, at 12 noon. All are welcome.

JOHN N. BURCHETT  
Noble Grand  
9-13-4t.

There are 186,160,311 acres in the National Forest System of this country. In May, the U. S. population count reached 186,160,311—so at that time we each owned, theoretically, one acre of land in the National Forest System.



**MAYO FAMILY**

At hand, courtesy of Mrs. Lucille Herndon, Prestonsburg, is considerable genealogical data on the Mayo, Isbell and Driskell families. Mrs. Herndon received the information from Mrs. Lillian Driskell Linebarger, 214 E. Monroe St., Chrisman, Edgar county, Illinois. Mrs. Linebarger is a descendant of William James Mayo, early Floyd county settler, who was born in Virginia. He and others from this area settled in Edgar county, Illinois.

The data from Mrs. Linebarger was copied from family archives, one source being family Bibles. One sheet exhibits a list of Mayo deaths. It follows.

"James Mayo, March 13, 1776; Martha Mayo, August 17, 1794; Jacob Mayo, November 27, 1813; George Mayo, May 27, 1802; Stephen Mayo, October 24, 1780; Susanna Mayo, March 2, 1805; Lucy Mayo, November 10, 1814; William James Mayo, February 1, 1820; (Mrs. Linebarger notes here that this ancestor 'must be yours'.)

"Elizabeth Maddox Mayo, October 20, 1840. (Mrs. Linebarger notes she is her great-grandmother); Siller Williamson Smith, 'my sister,' January 14, 1845; Wilson Mayo, February 16, 1849; William J. Mayo, August 1, 1849; 'my great grandmother,' Dycea Stratton, September 16, 1849; Judith Driskell, 'my grandmother,' September 25, 1851; Jacob Mayo, April 18, 1854; William James Driskell, May 5, 1854; George W. Driskell (wounded at Liberty Gap, June 25, 1863, and died at Murfreesboro, Tennessee, July 21, 1863; Susanna Charlotte Driskell, 'my great aunt,' February 1, 1888; Joseph Mitchell Driskell, March 9, 1901. (Mrs. Linebarger lists Joseph Mitchell Driskell as her grandfather and Susanna Charlotte Driskell as his second wife.)

"Edmund Bruce Driskell, born January 5, 1848, died December 13, 1906. Listed as Mrs. Linebarger's father. Jonathan Driskell, died at Tacoma, Washington. Mary D. Mitchell, died at Paris, Illinois. Elizabeth Ann Driskell, born February 2, 1840, died at age of 97 at Paris."

Mrs. Linebarger also sent two other sheets of genealogical data, one list being that of the issue of Valentine Mayo. He was a son of James Mayo, born December 11, 1711, and married secondly to Mar-

tha Williamson. Children of Valentine as listed by Mrs. Linebarger were James Mayo; John Mayo m. Elizabeth Richardson; Jacob Mayo m. Susanna Isbell; Williamson Mayo m. Hannah Phillips; Nancy Mayo m. William Williams; Robert Mayo m. Hannah Richardson; Martha Mayo m. Jehoshaphet Ladd; Richard George Mayo m. Lucy Manley; Thomas Mayo m. Elizabeth Harris; Joseph Mayo m. June Richardson; Stephen Mayo m. Nancy Isbell; Mary Mayo m. Nathaniel Anderson; Benjamin Mayo m. Mary Ann Hensley.

Another list is of the issue of Williamson Isbell, "died at the age of 94," and "married Ann Dillard, died at age 106." Listed as issue are "George Isbell; Josiah Isbell m. Tenham (a widow); Susanna Isbell, b. September 3, 1749, died 1853, m. Jacob Mayo, b. August 1, 1744; Lewis Isbell; Christopher Isbell, second marriage to a Johnson widow; James Isbell m. first Elizabeth Coleman, m. second Mary Reed; Nancy Isbell, m. Stephen Mayo, February 6, 1793; no children. William Isbell m. Mary Crenshaw; no children. Henry Isbell, b. October 3, 1761, d. 1849; married Sarah Smith. Benjamin Isbell, born March 18, 1764; married Elizabeth Tolar. Elizabeth Isbell m. Nathaniel Smith (no children). Thomas Isbell, b. December 23, 1762, married Elizabeth . . . Zachariah Isbell, December 1, 1765. (Death or birth?) Mary Isbell, died young. Sarah Isbell m. Samuel Slaton or Staton."

Concluding the list are the children of John Hancock, died 1802, married Elizabeth Maddox, died 1803. They are "Benjamin Hancock, Lewis Hancock, Nancy Hancock, Dicea Hancock m. Lawhorn, William Hancock, Elizabeth Maddox Hancock, m. William James Mayo, died October 20, 1840, Polly Judith Hancock m. Valentine Mayo, Major Hancock, Susanna Hancock m. a Spurlock."

Mrs. Linebarger concludes the letter:

"I have a copy of a letter written by Jacob Mayo, of Floyd county, Kentucky, September 14, 1851, to his sister, Susannah Charlotte, who was Joseph Driskell's second wife. Joseph Driskell, born 1812, died 1913, was my grandfather. I have a copy of the will of Jacob Mayo."

"My cousin, Florence Mitchell Smith, 1415 Wert Road, Houston 24, Texas, has hundreds of letters and documents, among them my and her great-grandfather, William James Mayo's 1769-1849 diary. She has letters from 1817 to his death to relatives, documents on his religious life, his commissions from the government, from governors of three states, a federal appointment, also church offices from the Methodists."

**Invitation To Bidders**

The Floyd County Board of Education will accept the lowest and best bid for the following until 12 noon, October 6, 1962:

ITEM NO. 1  
35-70,000 B.T.U. Vented space gas heaters with manual pilot.  
20-20,000 B.T.U. Vented space gas heaters with manual pilot.

ITEM NO. 2  
6-4' x 16' Gotham snap-tite ready framed cork board.  
10-4' x 16' Gotham snap-tite ready framed chalk board with chalk rail.  
8-3' x 7' x 13/4' flush doors.  
8-Key-in-knob locks (same key to fit all locks.)  
24-3' stem, No. 500 prescolite light fixtures.  
6-Arnco No. 101 Aluminum 9 foot coat and hat racks.

ITEM NO. 3  
120 gallons permanent type anti-freeze.  
The Board reserves the right to reject any or all bids and the right to purchase at the same price during the balance of the school year.  
CHARLES CLARK, Supt.  
Floyd County Schools  
9-13-3t

Lexington, Ky.—Winter rains can take much of the nutrient content from barn-yard manure or tobacco stalks stored outside the barn, says George Corder, UK Extension Service soils specialist.

**Dr. G. C. Collins  
DENTIST**

Office hours: 9 a.m. to 12 noon,  
1 p.m. to 5 p.m.  
and by appointment.  
Office on Front St., opposite  
hospital, Martin, Ky. Phone BU  
5-3015.

**GETS ADVANCED TRAINING**  
Fort Knox, Ky.—Pvt. Michael Jones, son of Mr. and Mrs. Walter Jones, Wayland, Ky., currently is undergoing advanced training here in Company B (General Supply School) of the 2nd Training Brigade's 6th Battalion. During this time Jones will be trained to perform clerical duties at all echelons in the chain of command organization. He will receive instruction in the handling of records pertaining to receipt, storage and issue of supplies and material, as well as those functions normally performed by a supply clerk. The 21-year-old soldier entered the Army last June and completed basic combat training at Fort Knox. Michael was graduated from Wayland high school in 1961 and attended Mayo State Vocational School.

**DAYTON BARLEY VARIETY**  
Lexington, Ky.—Dayton barley, one of four recommended barleys for Kentucky use, topped the recommended list with 63.4 bushels an acre in the 1961-1962 barley test at the Agricultural Experiment Station here.

TIMES WANT ADS PAY!

We are authorized to announce

**BILL WELLS**

of West Prestonsburg, as a candidate  
for  
District No. 1

**FLOYD COUNTY BOARD OF EDUCATION**

at the November, 1962, election.

**THANKS,  
GOVERNOR COMBS**

The personnel and management of Music-Colvin Chevrolet-Buick are deeply appreciative of your interest in Floyd county and Eastern Kentucky.

**MUSIC-COLVIN CHEVROLET-BUICK, Inc.**

Prestonsburg, Kentucky

**THANKS,  
GOVERNOR COMBS.**

Your unequalled effort to bring tourists to Floyd County is deeply appreciated by all true Eastern Kentuckians and is shown in the amazing transformation of Jenny Wiley State Park from a stand of rugged timber to the outstanding scenic attraction that it is today.

**LAKE LANES**

Prestonsburg, Kentucky

**THANKS,  
GOVERNOR COMBS!**

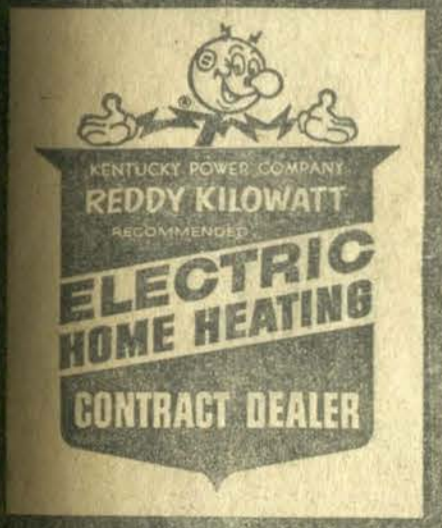
We are deeply appreciative of your outstanding development of Jenny Wiley State Park.

Accept our sincere thanks.

**CARTER & CALLIHAN FUNERAL HOME**

Prestonsburg, Ky.

**SEE YOUR**



**Now!**

IT WILL PAY YOU TO GET RID OF THAT OLD HEATING SYSTEM

UP TO \$150

TRADE-IN FOR YOUR OLD HEATING SYSTEM

WHEN YOU INSTALL FLAMELESS ELECTRIC HEATING

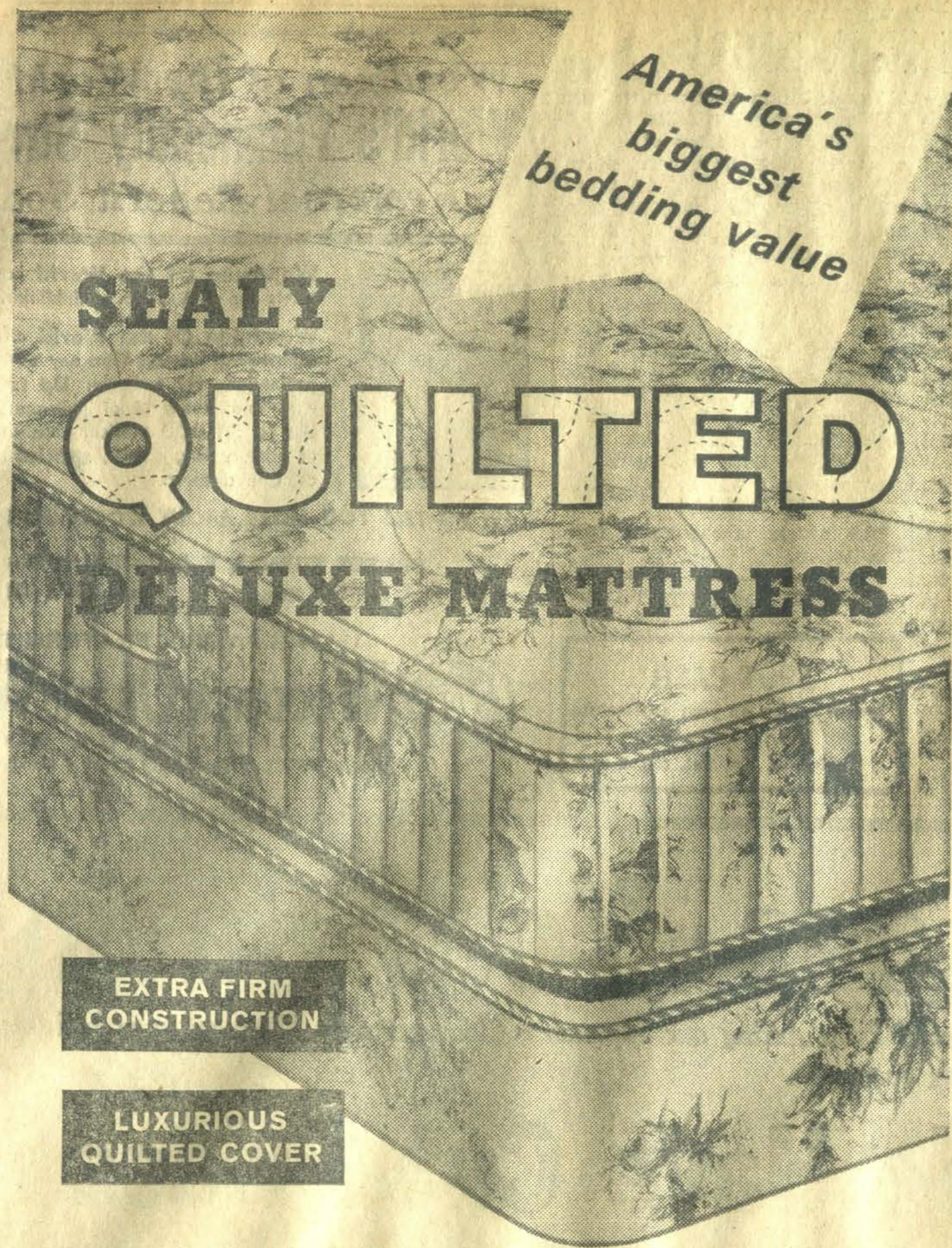
**Now!**

Solve your heating problems for good—only Electric Heating gives ALL the advantages . . .

- EASY TO INSTALL
- SAFE
- CLEAN
- COMFORTABLE
- CARE-FREE

CALL US FOR FULL DETAILS





**\$49<sup>88</sup>**  
Mattress or  
 Box Spring  
 Twin or Full Size

**LIMITED TIME ONLY  
 DURING SEALY'S  
 GOLDEN SLEEP SALE**

This luxurious mattress is specially made and specially priced for Sealy's Golden Sleep Sale. Here's a sensational buy on famous Sealy comfort, support and long wear. Made with extra-firm innerspring construction plus the added beauty of a glamorous quilted print cover... all these fine features for only \$49.88 while this sale lasts. Act now; buy and try it today!



ARROWOOD'S  
 SEPTEMBER  
 CLEARANCE  
**SALE!**

Of BEDDING  
 and FURNITURE

AMERICA'S GREATEST  
 BEDDING SALE

CONTINUES IN  
 FULL SWING

**Arrowood**  
 HARDWARE and FURNITURE

Prestonsburg, Ky.

**SEALY** Golden Sleep **SALE!**

Guaranteed Value!  
**WE'LL BUY IT BACK!**  
 IF YOU ARE NOT 100% SATISFIED

COVER FORMERLY USED ON SEALY'S \$79.50 POSTUREPEDIC®

Sealy

**BUY IT, TRY IT...**  
 Sealy Golden Sleep Mattress with \$59<sup>50</sup> features

**\$39<sup>88</sup>**  
Mattress or box spring  
 Twin or full size

This mattress is all quality—even to the cover, formerly used on Sealy's \$79.50 Posturepedic®. But, you be the judge. Buy it; try it. If you can find a better mattress within a month for the same or less money, buy it and return this Golden Sleep mattress for full purchase price. Limited time offer only, so buy and try it... today!

You might expect to pay \$59.50 for a mattress with these features

FEATURE	YOU COULD PAY
Sealy Innerspring Construction of quality steel, specially tempered	\$59.50
Sealy's famous button-free top for smooth, smooth sleeping	\$59.50
Life-line Flange Construction to protect mattress edges	\$59.50

ALL THESE DELUXE FEATURES FOR ONLY **\$39<sup>88</sup>**

**3-Pc. Steel, White BATH OUTFIT**  
 Complete With Fittings to Floor  
 Reg. \$129.95  
**\$99<sup>95</sup>**

**3-Pc. Steel, Colored BATH OUTFIT**  
 (Choice of Colors—Pink, Blue, Green)  
 Complete With Fittings To Floor  
 Reg. \$149.95  
**\$135<sup>00</sup>**

**3-Pc. Cast Iron BATH OUTFIT**  
 Complete With Fittings To Floor  
 Reg. \$159.95  
**\$135<sup>00</sup>**

**SEPTIC TANKS**  
 300 Gallon Size  
 Compare With Wholesale Price  
 For This Sale Only  
**\$39<sup>95</sup>**

**Deep Well WATER SYSTEM**  
 1/2 h.p. Deep Well Pump  
 Full 2 Yrs. Warranty  
 Reg. \$169.95  
**\$138<sup>88</sup>**

**WIRING Material**

100 Amp. Switch Box	\$7.95
6-3 Entrance Cable	25c ft.
12-2 Romex Cable	3 1/2c ft.
Duplex Receptacles	25c ea.
Toggle Switches	25c ea.
Wall Boxes	23c ea.
Ceiling Boxes	25c ea.

**PLASTIC PIPE**  
 For Installing Pipe to Bath Room and Water System.

1/2" Plastic Pipe	3c per foot
3/4" Plastic Pipe	4 1/2c per foot
1" Plastic Pipe	7c per foot
1 1/4" Plastic Pipe	12c per foot
1 1/2" Plastic Pipe	15c per foot
2" Plastic Pipe	19c per foot

**Plastic SEWER TILE**  
 For Installing Your Septic Tank or Sewer Line

10 foot joint, solid	\$3.25
10 foot joint, perf.	\$2.69

**MEDICINE CABINET**  
 Side Fluorescent Lights  
 Reg. \$29.95  
**\$22<sup>88</sup>**

**RUBBER TILE**  
 Large Selection To Choose From for the Bathroom or Kitchen  
 9x9 Block  
 Reg. 22c  
**18c**

**3-Piece BEDROOM SUITE**  
 Solid Maple  
 Reg. \$299.95  
**\$199<sup>95</sup>**

**3-Piece BEDROOM SUITE**  
 Book Case Bed  
 Double Dresser, Large Mirror, Big Roomy Chest  
 Reg. \$169.95  
**\$99<sup>95</sup>**

**3-Piece BEDROOM SUITE**  
 The Most Suite for the Money We Have Ever Had  
 Reg. \$299.95  
**\$188<sup>88</sup>**

**RECLINERS**  
 By Berkline  
 Reg. \$99.95  
**\$68<sup>88</sup>**

**BEDROOM SUITE**  
 September Clearance Special  
 Reg. \$299.95  
**\$125<sup>00</sup>**

**YOUNGSTOWN KITCHENS 42" CABINET SINK**  
 • One large no-splash bowl  
 • Large fluted drainboard  
 • Spacious storage areas • 3 doors  
**\$68<sup>88</sup>**

**YOUNGSTOWN KITCHENS 54" CABINET SINK**  
 • One large no-splash bowl  
 • Three storage compartments  
 • Two drawers  
 • Two spacious drainboards  
**\$88<sup>88</sup>**

**American Kitchens 66" CABINET SINK**  
 • Two roomy no-splash bowls  
 • Two spacious drainboards  
 • Large undersink storage compartment • 2 drawers • 4 doors  
**\$99<sup>95</sup>**

**YOUNGSTOWN KITCHENS 42" CABINET SINK**  
 • Large roomy bowl • Spacious drainboard • Large undersink storage compartment • 2 drawers • 3 doors  
**\$68<sup>88</sup>**

**GAS WATER HEATERS**

30-Gal. Standard	Reg. \$89.95	<b>\$49.88</b>
30-Gal. Deluxe	Reg. \$99.95	<b>\$59.88</b>
40-Gal. Glass-Lined	Reg. \$119.95	<b>\$79.88</b>

**2-Piece LIVING ROOM SUITE**  
 Foam Cushions—100% Nylon Cover  
 Reg. \$299.95  
**\$188<sup>88</sup>**

**7-Piece Chrome DINETTE**  
 A Big Buy for A Small Price  
 Reg. \$109.95  
**\$68<sup>88</sup>**  
 Only Five To Sell

**5-Piece Chrome DINETTE**  
 Reg. \$89.95  
**\$58<sup>88</sup>**  
 You Won't Believe You Can Get This Much for the Price

**2 Door Metal UTILITY CABINETS**  
 Plenty of Storage Room  
 Reg. \$19.95  
**\$14<sup>88</sup>**

**WATER HEATER**

30 gal. gas Standard	\$49.88
30 gal. gas glass lined	\$54.88
40 gal. gas glass lined	\$64.88
30 gal. electric glass lined	\$68.88
30 gal. electric glass lined Table top	\$79.95
40 gal. electric glass lined Table top	\$89.95

**3-Piece Maple SOFA BED SUITES**  
 Reg. \$199.95  
**\$138<sup>88</sup>**  
 Matching Tables, \$12.95 Each

**2-Piece LIVING ROOM SUITE**  
 Foam Cushions—100% Nylon Cover  
 Reg. \$229.95  
**\$168<sup>84</sup>**

**2-Piece LIVING ROOM SUITE**  
 Foam Cushions—Zip-On Cover  
 100% Nylon King Size Sofa  
 Reg. \$399.95  
**\$288<sup>88</sup>**

**OCCASIONAL CHAIRS**  
 Over 80 Styles and Covers To Choose From  
**\$19<sup>95</sup> and Up**

**TABLE GROUP**  
 1—Cocktail Table  
 2—Step Tables  
 Reg. \$29.95  
**\$16<sup>88</sup>**  
 Choice of Lined Oak, Walnut, Mahogany



Mom likes Pet for the goodness Kids get



Kid's like Pet for the Flavor..



...You bet

AT YOUR STORE OR DELIVERED TO YOUR HOME

NOTICE TO BIDDERS

for Middle Creek Elementary School, Floyd County, Kentucky. Sealed proposals will be received by the Floyd County Fiscal Court, Prestonsburg, Floyd county, Kentucky, at the office of the County Court Clerk, Floyd County Fiscal Court, Prestonsburg, Kentucky, until 1:30 p.m., Eastern Standard Time, October 12, 1962, for the construction of Middle Creek Elementary School, Floyd county, Kentucky.

Immediately following the scheduled closing time for reception of bids, all proposals which have been submitted in accordance with the contract documents will be publicly opened and read.

Plans and specifications and contract documents may be examined at the following places:

- 1. Floyd County Board of Education, Prestonsburg, Kentucky. 2. George Lee Shannon, Fitzpatrick Building, Prestonsburg, Kentucky. 3. F. W. Dodge Corp. offices: 840 Barrett Ave., Louisville, Kentucky. 608 1/2 Tennessee Ave., Charleston, West Virginia. 1209 Euclid Ave., Knoxville, Tennessee. 920 S. Jefferson St., Roanoke 16, Virginia. 30 E. Central Parkway, Cincinnati, Ohio.

Plans and specifications may be obtained from George Lee Shannon, architect and engineer, Fitzpatrick building, Prestonsburg, Kentucky, upon deposit of \$15.00 for each set. The deposit of contractors bidding upon the work will be returned upon the receipt of plans and contract documents in good condition, within ONE WEEK after bids are opened. Deposits of suppliers will be returned, less \$10.00 to cover cost of plans and postage, upon receipt of plans.

Bids must be accompanied by a bid bond or certified check, payable to Floyd County Fiscal Court, in the amount of not less than 5% of the bid.

No bidder may withdraw his bid for a period of 60 days from the date set for opening the bids. Bids received after the scheduled opening time will be returned unopened to the bidder. The owner reserves the right to reject any and all bids, or to let the contract as a whole, or for any part and to waive any informalities.

FLOYD COUNTY FISCAL COURT By: HENRY STUMBO County Judge C. "Ollie" ROBINSON County Clerk

9-20-62

JAMES E. ALLEN WATER WELL DRILLING Langley, Ky. Phone BU 5-3225

ALLEN

Mrs. David Louder was hostess to the Woman's Society of Christian Service of the First Methodist Church, Tuesday night. The president, Mrs. Tinny Crisp, presided over the meeting, which was opened with poems by Mrs. Janice Thomas and Mrs. Euna Laven. Mrs. Louder was elected secretary of youth work; Mrs. Janice Thomas as secretary of children's work, and Mrs. Dixie May as secretary of local church activities upon the resignation of other members. Plans were made for a church picnic which was to be held at Dewey Lake Sunday but was held in the church because of rain. Mrs. Flora Gray was in charge of the worship program, "What Missions Mean to Me." Taking part were Mrs. Nancy Louder, Mrs. Jewel Allen and Mrs. Tinny Crisp. The new program books were used, the theme of which for the coming year is "Called, Confronted, Compelled." Quadrennial emphasis, 1960-1964, was read by Mrs. Gray. A dessert course was served by Mrs. Louder to Mesdames Janice Thomas, Edna Mae Callison, Dixie May, Tinny Crisp, Jewel Allen, Maude Snodgrass, Nellie Lafferty, Flora Gray, Euna Laven. Mrs. Dixie May will be hostess for the October meeting.

Mr. and Mrs. Palmer Crisp have returned from a vacation trip in North Carolina and points in Tennessee and West Virginia. They stopped in Huntington on their return trip. They have now resumed their duties. Mr. Crisp as clerk with the C. & O. Railway Company in Paintsville and Mrs. Crisp with Snodgrass Insurance Agency.

Burt Allen, C. & O. track supervisor, has returned to work after a three-week vacation. He and Mrs. Allen have as their houseguest, her mother, Mrs. Sublett, of Paintsville. They had as other guests during the past week Mr. and Mrs. Jay Sublett, of Paintsville.

Mr. and Mrs. Harrison, Frazier and Mrs. David Louder were visiting relatives near Morehead, Wednesday.

Mrs. Alice Lafferty, of Water Gap, has returned from a two-month visit with Mr. and Mrs. Es-till Wyatt, of Point Pleasant, Ohio, and Mr. and Mrs. Scott Stanley, of Wooster, Ohio.

Keen Robinette has returned to work as C. & O. agent here, after a week's vacation.

Mrs. Eula Spurlock and daughters, Linda and Judy, of Springfield, Ohio, and Mr. and Mrs. Joe Vaughan, of Lexington, were visiting Mr. and Mrs. Felix Crisp and other relatives here over the week-end.

Mrs. Maggie Hall has returned from an extended visit with Mr. and Mrs. Johnny Floyd, of Grayson. Her daughter, Mrs. Bennie Lafferty, drove there Sunday to accompany her home.

Officers' training and Woman's Society of Christian Service seminar was held in the Methodist Church here recently. Mrs. Palmeter, Ashland district president, presided over the meeting, with other district members being present to give instructions to the local officers. Churches represented were Wheelwright, Wayland, Allen, Betsy Layne, Vogel-Day, First Methodist, Prestonsburg, and Community Methodist, Prestonsburg. During the social hour a dessert course was served in the church dining room by the Allen society. Mrs. Palmeter reported the largest attendance present at this and other meetings in the district since she became president three years ago.

Mrs. Tinny Crisp was guest-speaker at the meeting of the Community Methodist Church W.S.C.S., Monday of last week, at the home of Rev. and Mrs. Leroy Sanders, of Prestonsburg.

- 1 -

(Continued from Page 3) High bowler of the week at Crown Lanes was Phyllis Hammonds with a 216. New members of the Crown Honor Roll, 180 club, are Janice Pelphrey, Phyllis Hammonds, and Venice Reynolds. Latest member of the 540 series club—Miss Phyllis Hammonds with 548.

Lake Lanes' high bowler of the week was Alka Jean Grey with a 139 pinfall. Pin Princess, Miss Margaret Stanley, with 150. Junior Leagues started last Saturday at Lake Lanes, but they welcome all youngsters who would like to join. So call, go by, or be there at 9:30, Saturday morning.

Lexington, Ky. — The Jessamine Soil Conservation District has been named grand award conservation district for 1961-62, says Lyle Leonard, UK Extension Service conservation specialist.

BYRD SEES U. S. DEFICIT OF \$5 BILLION FOR 1963

The United States will end fiscal 1963 with a budgetary deficit of five billion dollars instead of the 500-million-dollar surplus President Kennedy predicted last January, according to Senator Harry F. Byrd (D., Va.) writing in the September Reader's Digest.

Last year's deficit was 6.3 billions. The nation, Mr. Byrd writes, "has been on a deficit financing basis for 25 of the past 31 years. The statutory limit on the federal debt is now 308 billion dollars. A federal debt approaching 308 billion dollars will be the greatest national debt in history—in war or peace!" His article is titled "We Can't Spend Ourselves Rich."

When domestic deficits mount, foreign governments and banks exercise the right of asking for payment on claims against us in gold, rather than dollars. This represents a decline of confidence in the dollar, Senator Byrd says. Between January 1, 1962, and June 30, we lost 454 million dollars in gold—more than 2 1/2 million dollars worth a day.

"In 1949," he writes, "we had 24.5

billion dollars in gold; now we have little more than 16 billion dollars. Some 12 billion dollars of this is required to back our money. Foreign claims against us total 18 to 20 billion dollars. In short, our gold not dedicated to backing the dollar could be dissipated overnight."

Other nations, such as England have weathered balance-of-payments crises with austerity programs, reducing expenditures. But, Senator Byrd writes, we are not doing this; we try to justify greater spending by saying it will increase the national product and thus make us wealthier. Such statements, he says, are "evil fiction, destructive of reasonable thought."

The article is condensed from Tax Review.

SUBSCRIBE FOR THE TIMES

SPOT CASH for an option on your real estate JOE I. MAY Harold, Ky. Tel. GR 8-6542

Woodmen of the World is the World's Financially Strongest Fraternal Benefit Society



Woodmen Of the World has \$119.44 of assets for each \$100 of liabilities. Woodmen Of the World offers more non-contractual benefits than any other fraternal organization. For example: Up to \$3,000 for care and treatment of pulmonary tuberculosis, Up to \$1,000 medical expense for treatment of primary lung cancer, special aid in time of common disaster.

LET ME TELL YOU MORE ABOUT WOODMEN PROTECTION

ERNEST TURNER, F. I. C., District Manager Driif, Kentucky • Phone FR 7-2982



"THE FAMILY FRATERNITY"®

WOODMEN OF THE WORLD LIFE INSURANCE SOCIETY HOME OFFICE: 1708 Farnam Street • Omaha 2, Nebraska

Our Loss - Your Savings!

These items on Special Price during our September Clearance Sale. We want your business to make this our biggest sale ever.

We Have Cut Prices

Just for you. Compare these prices and save.

- 21-gal. garbage can \$2.49 each Electric toasters, auto., chrome finish \$9.99 Latex flat wall paint \$3.88 gallon Electric percolators, auto., chrome finish \$9.99 Paint roller and pan 99c each Electric can openers, auto., chrome finish \$9.99 Outside white house paint \$3.88 gallon Electric steam irons \$9.99 Gallon can paint thinner 99c gallon Mirro 4-qt. pressure cooker \$9.99 Ready mixed aluminum paint \$3.88 gallon Save 20% on the complete line of Thompson 9x12 Old Ky. Home linoleum rugs \$4.99 each vented and unvented gas heaters. 9x12 Gold Seal linoleum rugs \$9.99 each

FREE WITH THE PURCHASE OF ANY LIVING ROOM SUITE—2 TABLE LAMPS—1 COCKTAIL TABLE —2 MATCHING END TABLES

BUY EARLY--SAVE \$20.00

Keep your family warm and comfortable this winter!



install the new EMPIRE GAS FLOOR FURNACE

with Miracle Flow Heat!

The whole family will enjoy the way Miracle Flow Heat distributes warmth and comfort evenly, gently throughout the entire room... makes your floors as warm as toast. You'll love the convenience of clean, healthful, dependable gas heat, too. The Empire is so quiet you hardly know it's there...no annoying expansion and contraction noises to dis-

turb your sleep. And talk about savings... that famous Universal No-Noise burner and specially designed combustion chambers give maximum heat without waste.

only \$11995

70,000 B.T.U. Installation Extra

HERE'S WHY THE EMPIRE GAS FLOOR FURNACE IS YOUR BEST BUY!



AUTOMATIC CONTROLS



USES NO SPACE Fits right into floor



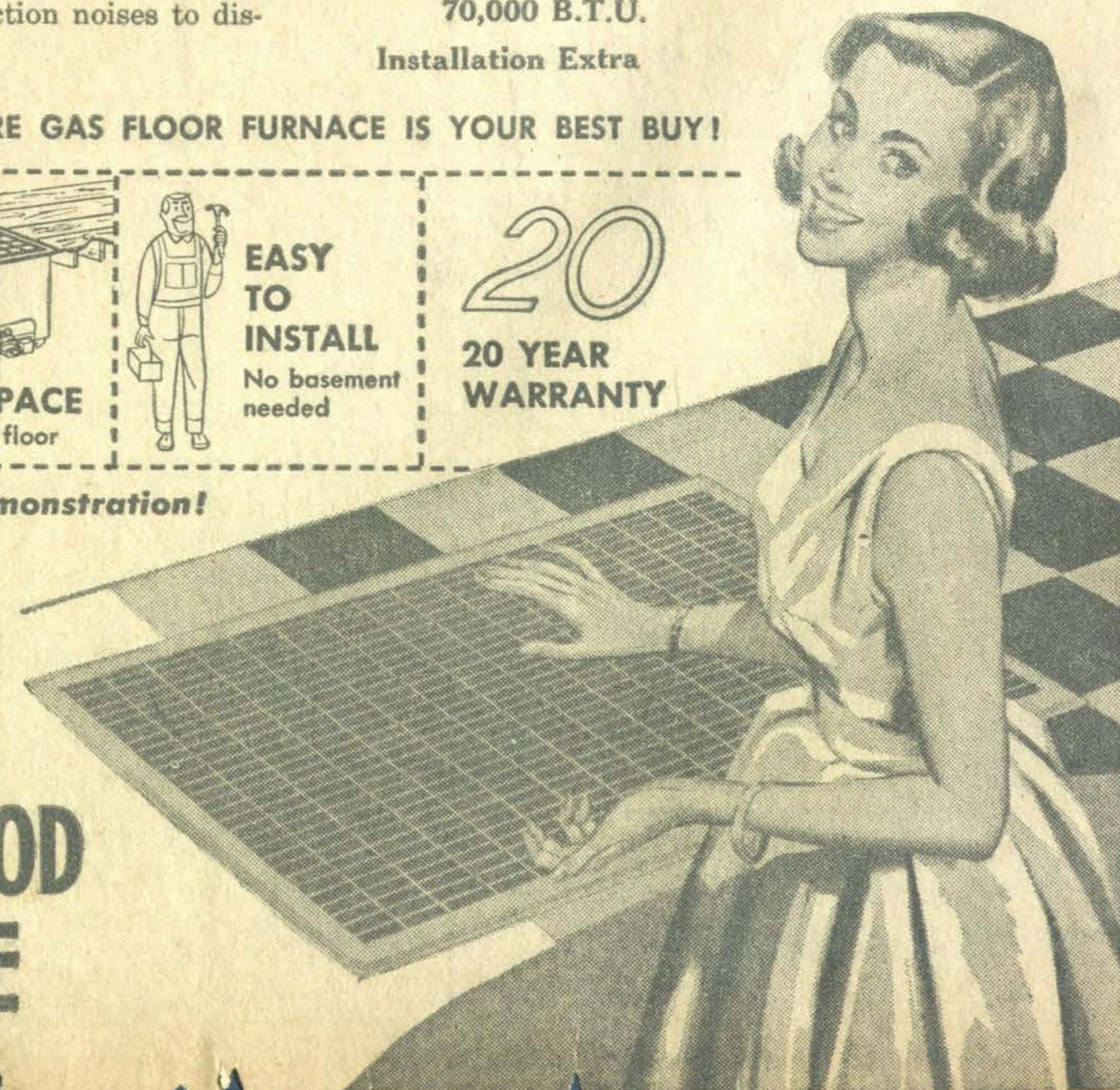
EASY TO INSTALL No basement needed



20 YEAR WARRANTY

Come in today for a demonstration!

Easy terms! Take months to pay!



Wm. ARROWOOD HARDWARE PRESTONSBURG, KY.

Our Historic Heritage

A Pictorial Review of East Kentucky (No. 297 in a Series)



UNION ARMY VETERAN AND FLOYD COUNTY EDUCATOR

Thomas Jefferson (Jeff) Sizemore, center, was one of the area's most beloved Union Army veterans. He fought at the Battle of Middle Creek and on many public occasions recited from memory Col. James A. Garfield's proclamation to the people of the Big Sandy Valley. He died in 1941.

Henry Patton, left, whose wife is on the right, served as Foyd County Superintendent of Schools when the schools of the area were emerging into a modern system. His dedicated professional service gave impetus and momentum to the desire to expand and improve educational opportunity.

The First National Bank presents these pictures in recognition of our historical heritage.



PRESTONSBURG, KENTUCKY

Member Federal Deposit Insurance Corp.

FLOWERS



For Every Occasion

LEETE'S

Member F.D.T. Court St. Phone TU 6-7898 WE DELIVER