

THIS REPRODUCTION IS COMPRISED  
OF THE BEST AND MOST COMPLETE  
SET OF ORIGINAL IMAGES AVAILABLE  
AT THE TIME OF THIS PROJECT'S  
INITIAL START. THE ORIGINAL PAPER,  
INK, FONT, FONT SIZE AND QUALITY  
OF THE MICROFILMED IMAGES  
CONTRIBUTE AND AFFECT THE  
QUALITY OF THE FINAL PRODUCT.





# Obituaries

### Carlos Rondall Conley

Carlos Rondall Conley, age 81, of Garrett, died Tuesday, Nov. 1, in the Pikeville Medical Center. He was born March 7, 1930, in Handshoe, a son of the late Coet and Cora Chaffins Conley and the late Vertie Conley. Carlos was a retired mechanic for Ford Motor Company and a Korean Army Veteran. He is survived by one son, Edgille Coet (Diane) Conley, of Allen; one daughter, Sabrina Lynn (Christopher) Holbrook, of East Point; a beloved friend and companion, Minnie Boleyn, of Garrett; two brothers, Merle Conley, of Logan, Ohio, and Lowell Conley, of Louisville; one sister, Carolyn Lewis,

of Logan, Ohio; and two grandchildren, Jason Holbrook and Joshua Conley. In addition to his parents he was preceded in death by one son, William Jonathan Conley. Funeral service for Carlos Rondall Conley will be conducted at 1 p.m., Friday, Nov. 4, in the Hall Funeral Home, Chapel, in Martin, with Roger Bolen officiating. Burial will follow in the J.M. Conley Cemetery, at Hueysville, with the Hall Funeral Home caring for those arrangements.

**Johnnie Hamilton**  
Johnnie Hamilton, 75, of Harold, died Tuesday Nov. 1, 2011, at McDowell ARH. He was born April 6, 1937, to the late Waldon

and Katie Newsome Hamilton. He was the husband of the late Inis Jones Hamilton. He was a retired coal miner and a member of the Pilgrims Hope Old Regular Baptist Church. He was preceded in death by three brothers, Arnold Hamilton, Abel Hamilton and Lack Hamilton; and three sisters, Iva May Hamilton, Mabel Hamilton and Cathy Hamilton. He is survived by two brothers, James Hamilton and Avron Hamilton, both of Harold; and three sisters, Alma Keathley, of Galveston, Dayphine Johnson, of Grethel, and Katherine Bryant, of Virgie. Funeral services will be held at 11 a.m., Friday, Nov. 4, in the Pilgrim's Hope Old Regular Baptist

Church, in Virgie. Burial will follow the service at Sam Hall Cemetery, at Bear Fork of Robinson Creek. Nelson Frazier Funeral Home in charge of arrangements.

**Christopher Lewis Joseph**  
Christopher Lewis Joseph, age 23 of Leesburg, Ga., passed away Monday, Oct. 31 at a Rome, Ga., hospital. Funeral services will be 3 p.m., Friday, Nov. 4, at Perry Funeral Home Chapel, with Rev. Ricky Harcourt officiating. Burial will follow in Cherokee Memory Garden. The family will receive friends from 6 until 8 p.m., Wednesday and Thursday. Pallbearers include

Joey Mullins, John Music, Matt McCue, Robert Gladden, Ricky Goble, Damon Stamper, Shawn Stamper, Chris Meade and Ernie Stamper. Survivors include his parents, Leonard and Marcella Goble Joseph, of Leesburg; sister, Nicole (Matt) McCue, of Centre, Ga.; brother, Joey Mullins, of Leesburg; grandparents, Leonard and Thelma Joseph, of Leesburg, and Patricia Goble, of Prestonsburg, and Dellarey Joseph, of Centre; uncles, Chris Meade, Ricky Lee Goble, John Music and Scotty Barnett; aunts, Martina Shepherd, Rena Mullins, Linda Goble and Laura Meade; and a host of other family and friends. Mr. Joseph was a native

of Prestonsburg, was a self-employed truck driver and was of the Baptist faith. He was preceded in death by his grandfather, Roger Lee Goble. Perry Funeral Home, directing.

**Availia Hall Mullins**  
Christopher Lewis Joseph, age 23 of Leesburg, Ga., passed away Monday, Oct. 31 at a Rome, Ga., hospital. Funeral services will be 3 p.m., Friday, Nov. 4, at Perry Funeral Home Chapel, with Rev. Ricky Harcourt officiating. Burial will follow in Cherokee Memory Garden. The family will receive friends from 6 until 8 p.m., Wednesday and Thursday. Pallbearers include

Joey Mullins, John Music, Matt McCue, Robert Gladden, Ricky Goble, Damon Stamper, Shawn Stamper, Chris Meade and Ernie Stamper. Survivors include his parents, Leonard and Marcella Goble Joseph, of Leesburg; sister, Nicole (Matt) McCue, of Centre, Ga.; brother, Joey Mullins, of Leesburg; grandparents, Leonard and Thelma Joseph, of Leesburg, and Patricia Goble, of Prestonsburg, and Dellarey Joseph, of Centre; uncles, Chris Meade, Ricky Lee Goble, John Music and Scotty Barnett; aunts, Martina Shepherd, Rena Mullins, Linda Goble and Laura Meade; and a host of other family and friends. Mr. Joseph was a native of Prestonsburg, was a self-employed truck driver and was of the Baptist faith. He was preceded in death by his grandfather, Roger Lee Goble. Perry Funeral Home, directing.

### Lawmakers hear road safety recommendations

FRANKFORT — Members of the Interim Joint Committee on Transportation were asked Tuesday to consider expanding Kentucky's primary seat belt law to include vehicles designed to carry up to 15 passengers.

Current state law requires seat belt use in vehicles designed to carry up to 10 passengers. Jason Gabbard, Chair of the Kentuckians for Better Transportation Safety Committee, said he considers Kentucky's law to be better than most states. Still, he wants the seat belt law expanded in accordance with recommendations presented by the National Transportation Safety Board (NTSB).

The NTSB provided legislators with a report on last year's crash on I-65 near Munfordville that killed 11 people. The accident involved a semi-truck and a van designed to carry up to 15 passengers. Most of the van's 12 occupants were unrestrained. The two survivors were in child safety seats and experienced only minor injuries. If everyone had been wearing a seat belt "some injuries might have been mitigated and the likelihood of ejections would have been reduced," said Steve Blackstone, state and local liaison for the NTSB.

He also asked lawmakers to consider a complete ban on all cell phone use by commercial vehicle operators. NTSB investigators found the truck driver in the accident had used his phone while driving a total of 69 times over the 24 hours prior, including a final call placed the same time the accident occurred.

Some committee members wondered if a hand-held only ban would be sufficient, or if a specific law for commercial drivers should come from a federal level.

The NTSB doesn't differentiate between hand-held and hands-free cell phones, as both are distracting to drivers, Blackstone said. No other states have yet enacted such a ban on hands-free phones.

# SAMPLE BALLOT

**Summary Ballot Instructions**

Press the candidate name or contest title to return to a contest.

Vote button will light up when you may cast your ballot.

Press here to cast your ballot now.

<b>COMMISSIONER OF AGRICULTURE</b> <small>(NOTE FOR ONE)</small>	<b>STRAIGHT PARTY</b>	<b>COMMISSIONER OF AGRICULTURE</b> <small>(NOTE FOR ONE)</small>
James R. Coner REPUBLICAN PARTY	No selection made.	No selection made.
Robert "Bob" Farmer DEMOCRATIC PARTY	<b>GOVERNOR AND LIEUTENANT GOVERNOR</b> <small>(NOTE FOR ONE)</small>	No selection made.
Write-in	No selection made.	No selection made.
Write-in	<b>SECRETARY OF STATE</b> <small>(NOTE FOR ONE)</small>	No selection made.
Write-in	No selection made.	No selection made.
Write-in	<b>ATTORNEY GENERAL</b> <small>(NOTE FOR ONE)</small>	No selection made.
Write-in	No selection made.	No selection made.
Write-in	<b>AUDITOR OF PUBLIC ACCOUNTS</b> <small>(NOTE FOR ONE)</small>	No selection made.
Write-in	No selection made.	No selection made.
Write-in	<b>STATE TREASURER</b> <small>(NOTE FOR ONE)</small>	No selection made.
Write-in	No selection made.	No selection made.

---

**FLOYD COUNTY, KENTUCKY**  
GENERAL ELECTION  
NOVEMBER 8, 2011

<b>COMMISSIONER OF AGRICULTURE</b> <small>(NOTE FOR ONE)</small>	<b>STRAIGHT PARTY</b>	<b>COMMISSIONER OF AGRICULTURE</b> <small>(NOTE FOR ONE)</small>
James R. Coner REPUBLICAN PARTY	No selection made.	No selection made.
Robert "Bob" Farmer DEMOCRATIC PARTY	<b>GOVERNOR AND LIEUTENANT GOVERNOR</b> <small>(NOTE FOR ONE)</small>	No selection made.
Write-in	No selection made.	No selection made.
Write-in	<b>SECRETARY OF STATE</b> <small>(NOTE FOR ONE)</small>	No selection made.
Write-in	No selection made.	No selection made.
Write-in	<b>ATTORNEY GENERAL</b> <small>(NOTE FOR ONE)</small>	No selection made.
Write-in	No selection made.	No selection made.
Write-in	<b>AUDITOR OF PUBLIC ACCOUNTS</b> <small>(NOTE FOR ONE)</small>	No selection made.
Write-in	No selection made.	No selection made.
Write-in	<b>STATE TREASURER</b> <small>(NOTE FOR ONE)</small>	No selection made.
Write-in	No selection made.	No selection made.

---

**FLOYD COUNTY, KENTUCKY**  
GENERAL ELECTION  
NOVEMBER 8, 2011

<b>COMMISSIONER OF AGRICULTURE</b> <small>(NOTE FOR ONE)</small>	<b>STRAIGHT PARTY</b>	<b>COMMISSIONER OF AGRICULTURE</b> <small>(NOTE FOR ONE)</small>
James R. Coner REPUBLICAN PARTY	No selection made.	No selection made.
Robert "Bob" Farmer DEMOCRATIC PARTY	<b>GOVERNOR AND LIEUTENANT GOVERNOR</b> <small>(NOTE FOR ONE)</small>	No selection made.
Write-in	No selection made.	No selection made.
Write-in	<b>SECRETARY OF STATE</b> <small>(NOTE FOR ONE)</small>	No selection made.
Write-in	No selection made.	No selection made.
Write-in	<b>ATTORNEY GENERAL</b> <small>(NOTE FOR ONE)</small>	No selection made.
Write-in	No selection made.	No selection made.
Write-in	<b>AUDITOR OF PUBLIC ACCOUNTS</b> <small>(NOTE FOR ONE)</small>	No selection made.
Write-in	No selection made.	No selection made.
Write-in	<b>STATE TREASURER</b> <small>(NOTE FOR ONE)</small>	No selection made.
Write-in	No selection made.	No selection made.

Back

Next

Review

1 1 / 1

# Pike grand jury indicts 17

By Julia Goad  
HEARTLAND NEWS  
SERVICE

**PIKEVILLE** — A Dor-ton woman has been in-dicted by the Pike County Grand Jury for the robbery of a pharmacy in 2009.

Tiffany Hannah, 25, was indicted for second degree felony robbery of the "Care More Pharmacy. She also faces a charge of theft of a controlled substance.

Also indicted by the October grand jury were:

- Christopher Mar-cum, 22, of Williamson, indicted for first degree possession of a controlled substance, oxycodone, en-dangering the welfare of a minor and public intoxica-tion.
- Julie Lawson, 41, of Pikeville, Ky., indicted for trafficking in a controlled substance, hydrocodone, illegal possession of a leg-end drug and possession of

drugs not in a proper con-tainer.

- Michael Johnson, Jr., 21, of Melvin, Ky., in-dicted for wanton endan-germent for creating a sub-stantial danger to Melvin Sayers, and first degree fleeing or evading police.
- Jerry Riley, 35, of Mossy Bottom in Pikev-ille, indicted for theft by unlawful taking for the theft of air compres-sors from Gordian Wagn-er, unlawful transaction with a minor for induc-ing a minor to engage in a criminal activity and first degree persistent felony offender.
- Tony Froato, 43, of Pikeville, indicted on sev-eral counts of possession of a forged instrument, checks to which the name of the Rev. Larry Mullins is written, for a total amount of \$1,050.
- Raymond Akers, 41, of Virgie, indicted for

two counts of possession of a forged instrument, a check for \$274, to which the name Rebecca Akers and Rebecca Trucking had been forged.

- Ashley Hall, 28, of Pikeville, indicted for fraudulent use of a credit card.
- William Doug Ad-kins, 42, of Raccoon, Ky., indicted for theft by de-ception and theft by fail-ure to make a disposition of property, of more than \$10,000 from Childers Oil.
- Amy Adkins, 22, of Pikeville, indicted for theft by unlawful taking of a 2005 Ford pickup truck from Archie Wathen.
- Delores Rice, 52, of Phelps, indicted for first degree wanton endan-germent and second degree criminal mischief.
- Jessica Bartley, 32, of Elkhorn City, indicted for promoting contraband, by

bringing controlled sub-stances into a detention facility.

- Robbie Newsome, 29, of Virgie, indicted for receiving property stolen from Mountaineer Machinery of more than \$500, and persistent fel-ony offender.
- Tvylla Fausnaugh, 20, of Pikeville, indicted for theft by unlawful taking and fourth degree assault in connection with the rob-bery of Stella Tackett.
- Gary Holbrooks, 35, of Elkhorn City, indicted for theft by unlawful tak-ing of a vehicle valued at less than \$500 from Trenia Jones.
- Rose Lopeman, 32, of Belfry, indicted for theft of property lost, mislaid or delivered by mistake.

An indictment is mere-ly an accusation and the defendant is presumed innocent until and unless proven guilty.

# Coping with home heating costs

Kentucky consumers can take a number of steps to reduce their natural gas usage or to soften the im-pact of gas costs. They in-clude:

**Budget billing:** This option allows customers to pay the same amount each month, based on their av-erage monthly usage dur-ing the year. Customers should contact their utility for more information.

**Energy conservation measures:** Simple steps such as turning down ther-mostats on furnaces (most people are comfortable at 68 degrees) and water heaters (120 degrees is hot enough for nearly all uses) can be big energy savers.

**Energy audits:** Many local utilities offer home energy audits at little or no cost to consumers. These audits can identify energy-wasting trouble spots and provide information on how to correct the prob-lems.

**Weatherization:** as-sistance for low-income families is available in Kentucky. Many utilities offer weatherization as-sistance in conjunction with local social service agencies. Local social service agencies also offer assistance through a state program administered by the Kentucky Cabinet for Health and Family Ser-vices. For information on weatherization assistance, go to <http://www.com-munityactionky.org/What-We-Do/EnergyAssistance-Weatherization/tabid/356/Default.aspx>.

Low-income consum-ers may qualify for assis-tance with their heating bills through the Low-In-come Home Energy Assis-tance Program (LIHEAP). If it is administered at the local level by community action agencies, Consum-ers who do not qualify for LIHEAP may be eligible for assistance through pro-grams sponsored by their utility company or pro-grams operated by local social service organiza-tions. Consumers should contact their utility for more information. Informa-tion about LIHEAP is available on the web at <http://chfs.ky.gov/dcbfs/dfs/LIHEAP.htm>.

For general informa-tion about cutting heating costs, utility issues or for assistance with resolving consumer disputes with utilities contact the PSC by calling 800-772-4636 or go to the PSC Web site at <http://psc.ky.gov>.

## Prescription drug abuse is an epidemic nationwide and in Ky.

Prescription pain medicine overdoses now kill more people in the U.S. than heroin and cocaine combined, with 40 Americans dying every day from painkiller abuse.

"This stems from a few irresponsible doc-tors," said Thomas Frie-den, director of the Cen-ters for Disease Control and Prevention.

"The problem is more from drug pushers on street corners." One California study found 3 percent of doctors wrote 62 percent of painkiller prescrip-tions, reports Daniel J. DeNoon of WebMD Health News.

Prescription drug abuse has tripled since 1999, with 1 in 20 U.S. adults admitting to tak-ing the drugs for pleasure

rather than need. Accord-ing to the CDC, the drugs most abused are Vicodin (hydrocodone), OxyContin (oxycodone), Opana (oxymorphone) and methadone. In 2010, pharmacists sold enough of those drugs and ones similar to them, "to give everyone in the U.S. a typical 5-milligram dose of hydrocodone every four hours for one month," DeNoon reports.

Abuse is more com-mon in men than women; in rural than urban areas; in non-Hispanic whites than in other races or eth-nicities; and in middle-age adults than younger or older adults.

The problem has grown to epidemic prop-ortions in Kentucky, with more people dy-ing from prescription drug overdoses than car

accidents. The Cour-ier-Journal reported in February. Much of the problem stems from Florida, which until Sep-tember did not have a drug-monitoring system in place.

Dealers from Ken-tucky would drive down to the Sunshine State and obtain prescriptions from several doctors at a time. They would then re-turn to Kentucky to sell their haul. While a track-ing system is now in place, there continues to be loopholes in Florida's law and the fear is pill mill operators will move to other states.

Frieden said states need to monitor who is prescribing the drugs; prevent doctor shopping; make prescriptions avail-able for just three days of use at a time; and have

doctors resort to narcot-ics only as a last mea-sure to control pain. "We are in an epidemic of prescription drug abuse," Frieden said. "This epi-demic can be stopped."

In Kentucky, an ef-fort has been launched to target "drug dealers in white coats" and in-volves a plan designed to root out doctors with suspicious prescription practices and pass legisla-tion to better track pre-scriptions.

U.S. "drug czar" Gil Kerlikowske, director of the Office of National Drug Control Policy, said the White House has a goal of cutting down on prescription drug abuse by 15 percent by 2015. Kerlikowske visited Kentucky and adjoining states in February to as-sess the problem.

**Weatherization:** Con-sumers can do a number of things to reduce inflows of cold air and leakage of warm air, particularly around windows and doors. Some basic weath-erization steps include:

- Use caulk or weath-erstripping to seal cracks around windows, doors, pipes and other points where cold air can enter the home. This alone can reduce heating costs by 10 percent or more.
- Install energy-effi-cient doors and windows.
- Add insulation in at-tics, crawl spaces and walls.
- Cover windows, es-pecially those with single-pane glass, with storm windows or plastic sheet-ing before the onset of cold weather.
- Clean or replace fur-nace filters monthly to improve airflow and effi-

ciency.

Advice on conserving energy, including links to a wide range of information, also is available from the Kentucky Department of Energy Development and Independence on the web at <http://energy.ky.gov/ef-ficiency/>.

Weatherization as-sistance for low-income families is available in Kentucky. Many utilities offer weatherization as-sistance in conjunction with local social service agencies. Local social service agencies also offer assistance through a state program administered by the Kentucky Cabinet for Health and Family Ser-vices. For information on weatherization assistance, go to <http://www.com-munityactionky.org/What-We-Do/EnergyAssistance-Weatherization/tabid/356/Default.aspx>.

Low-income consum-ers may qualify for assis-tance with their heating bills through the Low-In-come Home Energy Assis-tance Program (LIHEAP). If it is administered at the local level by community action agencies, Consum-ers who do not qualify for LIHEAP may be eligible for assistance through pro-grams sponsored by their utility company or pro-grams operated by local social service organiza-tions. Consumers should contact their utility for more information. Informa-tion about LIHEAP is available on the web at <http://chfs.ky.gov/dcbfs/dfs/LIHEAP.htm>.

For general informa-tion about cutting heating costs, utility issues or for assistance with resolving consumer disputes with utilities contact the PSC by calling 800-772-4636 or go to the PSC Web site at <http://psc.ky.gov>.

## PRECINCT POLLING LOCATIONS FOR THE NOVEMBER 8, 2011 GENERAL ELECTION

- #1 Courthouse/Trimble Branch .....Old Courthouse PVA Office
- #2 Buffalo/Endicott.....Cow Creek Fire Station #2
- #3 Depot.....Mountain Arts Center
- #4 Richmond.....Old Courthouse (County Attorney's Office)
- #5 North Prestonsburg.....Prestonsburg High School Foyer
- #6 Porter.....Adams Middle School
- #7 Auxler.....Auxier Historical Society Building
- #8 Middle Creek/Jack Allen.....David School
- #9 Cow Creek.....Allen Grade School
- #10 Mouth of Beaver.....Allen City Hall
- #11 Jim Banks.....Guyan Machinery
- #12 Rough & Tough.....Prestonsburg Elementary School
- #13 John Possum.....May Valley School
- #14 Maytown.....Maytown Fire Station
- #15 Bosco.....Building Beside Hueysville Post Office
- #16 Garrett/Rock Fork.....Garrett Fire Station
- #17 Lackey/Wayland.....Wayland Senior Citizens Building
- #19 Martin.....Denzil "Hoss" Halbert Gym
- #20 Halbert.....Garth School
- #21 Drift.....McDowell Senior Citizens Building
- #22 John Ant/Frasures Creek.....E.R. Grigsby Field House
- #23 Gearheart.....Pilgrim Rest Lunchroom
- #24 Clear Creek.....South Floyd High School
- #25 Jacks Creek.....Osborne Elementary School
- #26 Lee Hall.....Wheelwright Senior Citizens Building
- #27 Melvin.....Southeast Volunteer Fire Department
- #28 Antloch.....Estill Blankenship Building
- #29 Tickety.....Mud Creek Fire Depart.
- #30 Toler.....Toler Creek Fire Station
- #31 Mouth of Mud.....Old Harold Telephone Building
- #32 Little Mud.....Little Mud Community Center (Old Spruce Pine School)
- #33 Ivel.....Ivel B.R. Station
- #34 Betsy Layne.....Betsy Layne Senior Citizens Building
- #35 Abbott.....Katy Friend Free Will Baptist Church (Youth Center)
- #38 Weeksberry.....Weeksbury Community Center
- #39 Prater Creek.....Lunchroom at the Old Prater School
- #40 Branhams Creek.....Billy Hall Building
- #41 Beech Grove.....Allen Central High School
- #42 Head of Mud.....Vickie Bryant Building (Formerly S&M Market)
- #43 Arkansas.....Tad Adkins Building
- #44 Allen/Dwale.....Allen Fire Department
- #45 Cliff.....Big Sandy ADD Building

CHRIS WAUGH, Floyd County Clerk

## IF VOTER NEEDS ASSISTANCE IN VOTING:

### VOTER MAY HAVE ASSISTANCE IF:

1. Voter is blind
2. Voter is unable to read English
3. Voter has a physical disability which prevents the voter from voting without physical assistance

### WHO MAY ASSIST THE VOTER.

1. Both Election Judges; or
2. Person of voter's choice "except" —not voter's employer or agent of that employer—not officer or agent of voter's union—not a candidate to be voted upon.

### WHAT IS THE PROPER PROCEDURE?

1. Voter completes the "Voter Assistance Form" (SBE-31A) completely, including the reason assistance is needed, and signs name.
2. If any person other than the election judges assists the voter, that person must complete the portion of the form which is an OATH that the assistor will operate the machine as directed by the voter AND this OATH must be attested by the Clerk signing.
3. If the election judges assist the voter, the Democratic and Republican Judges must sign the OATH at the bottom, BOTH JUDGES will enter the machine with the voter, where in the presence of each other, the machine is operated in accordance with the directions of the voter.
4. Election officers should list the name of each assisted voter on the "Record of Assisted Voters" (SBE-31A) form which should be returned with the election material as instructed.

### VOTER MAY MAKE APPLICATION FOR PERMANENT ASSISTANCE TO VOTE

There is a portion of this form where the voter may request the Board of Elections to certify the voter as needing permanent assistance due to blindness or other physical disability. If the Board approves the voter's request, voter will have permanent certification, relieving the VOTER ONLY from the responsibility of completing the oath. Even if a voter is certified for permanent assistance, the assistor(s) must still complete and sign their portion of the Oath.

Violations of the laws regarding Assistance to Vote should be reported to the Board of Elections immediately, and noted on the "Precinct Election Sheriff's Post Election Report" (SBE-53)

### ELECTIONEERING

Electioneering is PROHIBITED WITHIN 300 FEET\* of any entrance to a building in which a voting machine is located, if that entrance is unlocked and used by voters on election day.

Electioneering is defined by law as:

1. Display of signs
2. Distribution of campaign literature, cards or handbills
3. Solicitations of votes for or against any candidate or question on the ballot in any manner
4. Solicitation of signatures to any petition

The PRECINCT SHERIFF has the responsibility of ENFORCING THE ELECTIONEERING LAWS WITHIN 50 FEET OF THE ENTRANCES. VIOLATIONS OF ELECTIONEERING WITHIN 300 FEET should be reported to the Board of Elections IMMEDIATELY.

The precinct Sheriff may request the assistance of any law-enforcement officer to maintain law and order at the polls, but it is strongly suggested that Precinct Sheriff make that request through the Board of Elections. (County Board of Elections phone number 886-3816 or 1-800-481-2009)

Any violations of the electioneering laws should be entered on the "Precinct Sheriff's Post Election Report" (SBE-53)



# Viewpoint

Worth Repeating ...

A liberal is a man who is right most of the time, but he's right too soon.  
— Gregory Nunn

## Amendment I

Congress shall make no law respecting an establishment of religion, or prohibiting the free exercise thereof; abridging the freedom of speech, or of the press; or the right of the people to peaceably assemble, and to petition the government for a redress of grievances.



## Our View Williams embraces ignorance, bigotry

Senate President David Williams must be desperate in his longshot bid to unseat Gov. Steve Beshear in next Tuesday's election. Far behind in the polls for the entire race, he decided this week to see if a little xenophobia might change his fortunes.

We don't believe it will, and Kentucky will be better off not to elect a religious bigot. Williams criticized Beshear this week for taking part in a Hindu ceremony during a groundbreaking ceremony earlier this week for a \$180 million factory in Elizabethtown that will employ 250 people. The owners of the new factory, who are Hindu, had decided to celebrate the project with a traditional Hindu "ground blessing."

As if those remarks were not bad enough, Williams stepped way over the line by accusing the governor of "praying to false gods" and "wearing a dot on his head."

Williams should realize that the governor of Kentucky is not simply the governor of Christians. We view Beshear's actions as showing respect for a different culture, not betraying his own.

And there is no precedent for Williams' narrow-minded rejection of other cultures in Christian tradition. Many Christians will attend the worship services and other religious events of people of different faiths in an attempt to reach out to others and learn more about the world we live in.

Williams has embarrassed himself, his government, his faith and the entire state of Kentucky by making a statement that is so insulting and devoid of respect to an entire religious community. By all accounts an intelligent man, we are baffled by his willful display of unfettered ignorance.

There is little doubt that Williams will fail mightily in his election bid on Tuesday, so any call for Kentuckians to reject him at the polls would be a moot point. It would be a more fitting punishment, however, for Williams' Republican colleagues in the state Senate to do the same, and elect a new leader who does not reflect quite so poorly on the entire party.

— The Floyd County Times

## Beyond the Beltway

### GOP debates are more entertaining than GOP policies

By Donald Kaul  
OTHERWORDS

I was out of the country for a couple of weeks and came back to be greeted by yet another Republican presidential debate. I was so pleased.

I hadn't realized how much I missed that goofy bunch of crazy kids.

I've grown especially fond of Ron Paul, the Congressman from Mars. He's against all government enterprises, up to and including painting yellow lines on the highway. (I'm not sure whether he's physically shrinking or his suits are getting bigger, but when he answers a question he sort of twists his neck like a turtle coming out of its shell. More and more, he's come to resemble the crazy uncle you hide in the attic when company comes.)

And then there's Michele Bachmann, the Gracie Allen of the group. She stands there with her wide, unblinking stare and keeps saying remarkable things. In the last debate she made a moving appeal to "the Moms out there" who are trying to keep things together.

"I will not fail you," she said. "Hold on, Moms out there. It's not too late."

Funny? I thought I'd die. While urging the Moms to hold until she arrived, she neglected to tell them that she was going to cut the rope they were holding on to when she got there.

I was surprised to learn that in my absence, Herman Cain, the Piz-zu baron, had moved into a leadership position in the race. I thought he was in it for the laughs. (You have to admit, his "9-9-9 plan," which would raise taxes on the middle class and lower them on upper-income types, is worth a chuckle.)

And Newt Gingrich is always a hoot with his superannuated Dennis the Menace act.

However, I must confess that I don't understand what Rick Santorum is doing in the race. The real stars of the show are the dueling governors, Mitt Romney and Rick Perry. They've raised their professional wrestling act to the level of art.

Romney adopts a stance of jovial condescension while Perry visibly seethes at his rival. He looks as though he'd like to crush Mitt like a grape or, even better, shoot the sidewinder with the six-gun he carries while jogging.

Romney would probably settle for strapping Perry to the roof of his car and driving him to Maine. I was disappointed that Gov. Chris Christie of New Jersey decided he didn't want to be a candidate. He's something of a brute, but he comes across as an honest politician who doesn't mince words, which would be a refresh-

ing change.

(Also, it would be good to have a fat person in the race, since fat people are the last disadvantaged minority that it's kind of OK to make jokes about.)

I'll be frank with you, though: I don't see how any of these people expects to be elected.

To one degree or another, they run as surrogates of the tea party. The movement is supposed to be populist in character, but pretty much every item on their agenda favors the wealthy few at the expense of the not-very-wealthy many.

When populism was last in full flower 100 years ago, for example, "free silver" was the battle cry. That was code for easy credit. Silver was the inflationary currency and it favored people in debt (because you could pay off debts with money worth less than the money you borrowed).

We're still a nation of debtors, and the Republicans are clamoring for a deflationary policy — one that would force people to pay off debts with money more expensive than that which they borrowed.

They want to cut public assistance to the elderly and poor. They want some version of a flat tax on income that would fall more heavily on those with less. They want to do away with the protection government gives the public against corporation malfeasance.

They expect to win with that? I don't get it.

OtherWords columnist Donald Kaul lives in Ann Arbor, Mich.

## The Times

Published Wednesday and Friday each week

263 SOUTH CENTRAL AVENUE  
PRESTONSBURG, KENTUCKY 41653

Phone: (606) 886-2886  
Fax: (606) 886-3603  
www.floydcountytimes.com

USPS 202-700  
Entered as second class mailer, June 18, 1927, at the post office at  
Prestonsburg, Kentucky, under the act of March 3, 1879.  
Periodicals postage paid at Prestonsburg, Ky.

SUBSCRIPTION RATES PER YEAR:  
In Floyd County: \$85.00  
In Kentucky: \$84.00  
Outside Kentucky: \$125

Postmaster: Send change of address to:  
The Floyd County Times,  
P.O. Box 390  
Prestonsburg, Kentucky 41653

PUBLISHER: Joshua Myers  
MANAGING EDITOR: Ralph B. Davis  
myers@heartlandpublications.com  
web@floydcountytimes.com

## The Usual Eccentric

### A one-way war of words

By Will E. Sanders  
CREATORS SYNDICATE

My mother led most of her middle-aged life under the distinct impression that her small fleet of household appliances had the ability to understand the things she cursed at them when they didn't function properly. Toasters, vacuum cleaners and lawnmowers all felt the wrath of her bleep-bleep tongue-lashings.

Thankfully, she passed along that family trait to me, which is why I found myself having a grand debate with my broken coffee machine just the other morning. Unlike my mother, however, I take it a tad further than simply scolding my can openers, remote controls and so forth. I actually hold sarcastic conversations aloud with my various pieces of malfunc-

tioning machinery as I coax them with clever barbs in a shrill voice my girlfriend, Christine, never fully appreciates.

"Have you ever had tea?" I asked Maxwell, my coffee machine. "I assume it's terrible. That's why I own a coffee machine instead of a tea machine. Is it too much to ask for a warm cup of Joe without using a pair of pliers, or are you just playing hard to get?"

"I mean, the only purpose you serve in life is to make coffee, yet you somehow lack the ability to do even that. What's that say about you?"

In my household, it's my coffee maker that bears the most scars as a result of such fits, as I like to imagine all coffee makers do. In the overall scheme of things, your coffee maker — and I'm talking to fellow bona fide members of the caffeine club — is a really important piece of heavy household equipment.

Think about it: It's that one thing whose ability to work correctly can make or break an entire day. With

no morning coffee, I am not even suited to put my pants on, much less the gumption to arrive at work half-naked.

But more importantly than anything, the coffee maker is the first piece of technological mayhem your average person deals with right after he wakes up. I don't know about you, but as soon as I rise, I'm in no shape to be maneuvering and meddling with a series of coded buttons, an array of lights and switches, and an eco-friendly setting that I could give a crappuccino about.

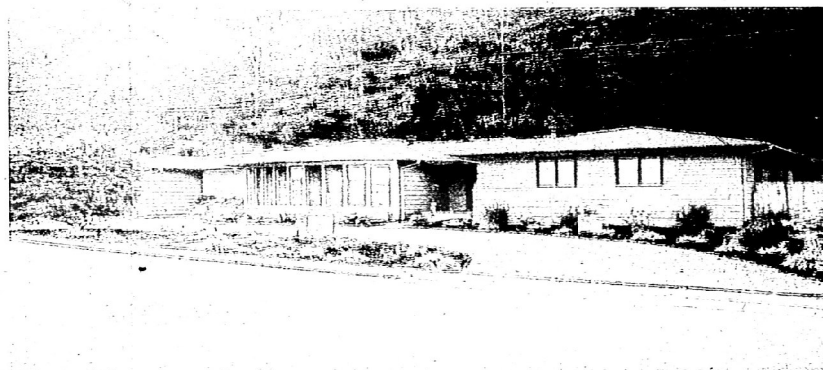
Are you even aware of just some of today's coffee maker abilities? Like everything else, they keep adding pointless bells and whistles sure to tug at your purse strings. You would think those mutonheads who designed these things would eventually understand that the only thing a coffee maker should do is make coffee. Maybe a little clock or something, but that's it. Everything else just convolutes the whole just-peeled-my-eyes-open-from-

# Yard of the Month



Photos by Jack Latta

Featuring a beautiful full growth Weeping Willow and Knockout Roses the home of Jim and Gina Webb in Briarwood won 'Yard of the Month' for August.



Morgan Stone's home in Trimble Branch won 'Yard of the Month' with its decorative landscaping and new plantings for the month of September

## Rural children face more health risks; most parents say their kids are healthy

Children in rural areas face more health challenges than those in urban parts of the country, and are more likely to be poor, more vulnerable to death from injuries and more likely to use tobacco. Rural families also have more difficulty in gaining access to health care. But the majority of parents, regardless of whether they live in urban or rural communities, say their kids are healthy.

These findings are from a report entitled "The Health and Well-Being of Children in Rural Areas: A Portrait of the Nation 2007," compiled by the U.S. Department of Health and Human Services' Health Resources and Services Administration. The report's results are based on the National Survey of Children's Health, conducted in 2007.

The survey classified children as living in an urban area, a large or well-populated rural area, or a small or isolated rural area. Large rural areas include large towns with populations of 10,000 to 49,999. Small rural areas include small towns with populations of 2,500 to 9,999. Survey results were not broken down by state.

The report found children's overall health status does not vary substantially according to location. Four-fifths of parents said their children are in excellent or very good health, regardless of where they live.

But the analysis found rural children, as a whole, face more health risks than their urban counterparts. Only 67.6 percent of children in large rural areas and 69.8 percent in small rural areas are breast-fed, compared to 77 percent of urban children. (About 59 percent of new mothers breast-feed in Kentucky, compared to 75 percent nationwide.)

Rural children are also more likely to be overweight or obese — 34.6 percent of children in large rural areas and 35.2 percent in small rural areas compared to 30.9 percent of urban children. Rural children are also more likely to live with someone who smokes — one in three children in large rural areas and 35 per-

cent in small rural areas do. Only one in five urban children do.

Though about 90 percent of children surveyed had health insurance, children in rural areas were more likely to have public coverage like Medicaid or CHIP. Urban children were more likely to have private insurance. Access to health care also remains a factor. Of the 2,052 non-metropolitan counties identified in 2010, 704 were designated as health professional shortage areas. Of those, 467 had shortages for dental care and 521 lacked adequate mental health services. To find if a Kentucky county is in a health professional shortage area, click here.

There are some advantages for rural children, however. They tend to be better protected and more connected to their families and communities. More than half of children in small rural areas shared a meal with their families every day in the past week. Children in small rural areas are also more likely to get physical activity every day (34.7 percent), though they are less likely to have access to community centers, parks or playgrounds. However, rural children are more likely to spend more time watching television or videos — 60.9 percent of children in large rural areas did so, compared to 53 percent in small rural areas and 53.9 percent of urban children.

The data for the National Survey of Children's Health was generated using a random telephone survey, in which 2.8 million telephone numbers were randomly generated. After non-working and non-residential numbers were eliminated, the remaining numbers were called and surveyors spoke to respondents to see if children less than 18 years of age lived in the household. From each of those households, one child was randomly selected to be the focus of the interview and responded to the survey questions. Surveys were conducted in English, Spanish, Mandarin, Cantonese, Vietnamese and Korean.

## Doctor says environment might contribute to cancer rates

FRANKFORT — Eastern Kentucky has the highest rates of lung cancer than any region in the state, the head of the University of Kentucky Markey Cancer Center told state lawmakers Wednesday. But he doubts smoking is entirely to blame.

Elevated amounts of heavy metals like arsenic and chromium in the water and soil of Appalachia are also believed to play a role in the region's high lung and colorectal cancer rates, Markey Cancer Center Director Dr. Mark Evers told the Tobacco Settlement Agreement Fund Advisory Committee.

"Smoking alone doesn't account for the marked increase (in cancer rates) as opposed to the rest of Kentucky," Evers said.

Researchers working with the Kentucky Lung Cancer Research Program — which is funded with Kentucky tobacco settlement dollars — have found that 83 percent of counties in Kentucky's 5th Congressional District have high lung cancer rates compared to 38 percent of counties statewide, Evers said. But smoking rates between those Eastern Kentucky counties and counties in the rest of Kentucky only vary by about 4 percent (29 percent regionally versus 25 percent statewide), which indicates "Eastern Kentucky's higher incidence of cancer cannot be attributed to smoking alone," Evers said.

What researchers believe is partially to blame

for the higher cancer rates are high levels of arsenic in the region's coal beds and high levels of chromium and other heavy metals found there, Evers said.

You can almost map out the counties that have the highest level of arsenic and chromium to those with the highest cancer rates for both lung cancer and colorectal cancer," he said.

Current research funded with a \$1.4 million Department of Defense (DOD) grant shows that many residents in Eastern Kentucky counties with the highest arsenic and chromium levels still use well water, which is a collection point for the heavy metals. The metals can damage DNA once absorbed into the body, Evers said.

Biological and environmental samples are being collected as part of the DOD grant to create a shared data bank that will be used "to study the effect of these heavy metals as they contribute to cancer development," Evers said. Committee Co-Chair Sen. Paul Hornback, R-Shelbyville, asked Evers if researchers have discovered if cancer has a genetic cause, or is hereditary. Some cancers are found to have what are called "founder genes" that are linked to some cancers, especially colorectal, Evers said. But he quickly added that "even taking into account the genetic factors, there's something about this region that we think is environmental causing this very high

incidence in that region alone."

The Markey Cancer Center and University of Louisville Brown Cancer Center often collaborate through the Kentucky Lung Cancer Research Program

to improve the survival rates of Kentuckians with lung cancer. Dr. Donald Miller, who is the director of the Brown Cancer Center, said "UL researchers working under the program are using tobacco to create a new, affordable vaccine against human papillomavirus, or HPV, the virus linked to cervical cancer.

The current FDA-approved HPV vaccine, called Gardasil, is often cost prohibitive at market price of \$360 a person, according to Miller. The new vaccine

would probably be marketed at \$15 to \$20 and "serve as a prototype for lung cancer vaccines that we're also working at as part of that program," he said.

Rep. Wilson Stone, D-Scottsville, who is also co-chair of the committee, asked Miller if there are other environmental or lifestyle issues besides smoking that might be contributing to Kentucky's higher-than-average statewide lung cancer rate. Miller said while there are other factors, the high rate of smoking in Kentucky is still at the top of the list.

"...We smoke more than other people and the decrease in smoking...has been slower than it has been in the rest of the country," Miller said.

In Loving Memory of

### Johnny Loper

May 30, 1978 - November 7, 2010

*It's been a year since you've been gone. It's been the saddest year of my life. If Mom could have taken your place that day, I would've. You were a "big kid" at heart. I remember when I was in my bedroom and had my door shut, you would get down on the floor and look under it to see if my light was on...I miss that. All of the family loves and misses you a lot.*

Sadly missed by:  
Mom, Anna, Michael, Leslie & the rest of the family.

Visit us at:  
[www.floydcountytimes.com](http://www.floydcountytimes.com)

**A TERRIBLE THING HAPPENS WHEN YOU DON'T ADVERTISE. NO ONE NOTICES YOU**

**The Times** FLOYD COUNTY

606-886-8506  
[www.floydcountytimes.com](http://www.floydcountytimes.com)  
...for the best ADVERTISING RESULTS

The Floyd County Times

**Virtual Costume Party**  
Sponsored By: Deskins Motors

ENTER TO WIN \$1,000 (Ages 9-18)

Submit a photo of your kid's creative costume to be a part of our Virtual Costume Party. It's easy to enter. Submit a photo of your child in costume to [floydcountytimes.com](http://floydcountytimes.com)

There's nothing like

# FREEDOM

Ford HONDA

IVEL, KY • 478-1234  
Located between Pikeville & Prestonsburg on US 29







College students from 10 Kentucky colleges and universities met at The Center for Rural Development in Somerset to discuss issues that contribute to the out-migration of many of the region's best and brightest students on Oct. 28 at the 2011 Collegiate "Insight and Dialogue Engaging Appalachian Students" (IDEAS) Summit. The summit was presented by The Center's Higher Education Consortium and the Appalachian Regional Commission (ARC).

## College students discuss how to combat 'brain drain'

Forum seeks ways to prevent Appalachia's graduates from leaving area

SOMERSET — To get a deeper understanding of issues in Southern and Eastern Kentucky that often lead young people to leave the largely rural region, The Center for Rural Development's Higher Education Consortium went to the source — today's college students who may still be undecided on their post-graduation plans.

A total of 30 students from 10 Kentucky colleges and universities met this week at The Center in Somerset to continue a discussion started by their peers in 2009 on issues that contribute to the out-migration of many of the region's best and brightest students.

During the 2011 Collegiate "Insight and Dialogue Engaging Appalachian Students" (IDEAS) Summit, college representatives addressed challenges and possible solutions for how to retain youth and keep more future leaders in Southern and Eastern Kentucky.

Nicholas Lawson, a junior at Alice Lloyd College, said the region needs more job opportunities for college graduates.

"People will go where they can find work, and it is important that it is provided in the area of their region," Lawson said.

"I want to invest in my own community, reform, invest in other communities," Kayla Smith, a sophomore at the University of the Cumberlands, added. "I feel God has called me to stay close to home for

a while, which I am quite okay with."

The Summit, presented by the Appalachian Regional Commission (ARC) and The Center, drew participants from 10 counties designated as distressed by the ARC to discuss key issues in educational attainment, entrepreneurship, economic development, and health and wellness.

"One of the greatest resources our region has to offer is our young people," Dr. Joseph S. Harter III, chairman of the Higher Education Consortium, said. "By capitalizing on their ideas and solutions today to retain their generation in Appalachia, we are that much closer to transforming Southern and Eastern Kentucky with our 'homegrown talent.'"

While being led by their peers in breakout sessions, participants were encouraged to freely share their thoughts and concerns on the event's key issues. This input is critical toward the belief of U.S. Congressman "Hal" Rogers (KY-05) that "no young person should have to leave home to find his or her future."

"I have always touted the raw talents of our young people in Southern and Eastern Kentucky," Rogers said. "This Summit gives us a chance to recognize the students in our region who are using their talents to give back to their communities and improve their own futures."

"It is encouraging to see our young people being the catalyst for change," Lonnie Lawson, president and CEO of The Center, added. "Their passion and commitment to making Southern and Eastern Kentucky a better place to live and work for themselves and others speaks volumes."

Suggested action steps developed by student participants at the Summit will be shared with participating colleges and universities and local communities.

"Our students today are the Appalachia of tomorrow," said Summit keynote speaker Dr. Ann Lyttle-Burns, Clay County native and coordinator for Kentucky Educational Collaborative for State Agency Child (KECSAS) programs in Fayette County.

"We must show them what services are needed in our region, and how their training can fulfill that need and improve the overall well-being of our community for our families that are currently there and future generations."

Attending the summit were representatives from Somerset Community College, Alice Lloyd College, University of Kentucky, Eastern Kentucky University, University of the Cumberlands, Campbellsville University, Morehead State University, Hazard Community and Technical College, the University of Pikeville, and Lindsey Wilson College.



Dr. Ann Lyttle-Burns, center, Clay County native and coordinator for Kentucky Educational Collaborative for State Agency Child (KECSAS) programs in Fayette County, met with Rebecca Watkins, a student at the University of the Cumberlands, and Jacob Isaacs, a student at Alice Lloyd College, at the 2011 Collegiate "Insight and Dialogue Engaging Appalachian Students" (IDEAS) Summit held Oct. 28 at The Center for Rural Development in Somerset. Both are seniors majoring in business administration. The summit was presented by The Center's Higher Education Consortium and the Appalachian Regional Commission (ARC).



## Emerge Kentucky application deadline Nov. 11 for 2012 candidate training program

Emerge Kentucky, a non-profit organization established in 2009 to recruit and train Democratic women to run for public office, is accepting applications for the 2012 candidate-training program through Nov. 11. Up to 100 women will be selected to participate in the third class, which begins in January.

"Have you ever thought about running for public office, but did not know where to begin? Emerge Kentucky is the program for you. We provide the tools, skills, and networking opportunities in order for you to succeed," said Jennifer A. Moore, chair of Emerge Kentucky. "We also want to hear from those who may know a woman who should run for office. Recommend her today."

"Emerge Kentucky offers Democratic women leaders the opportunity for top-notch political training and mentoring, giving women the skills and confidence to run effective and successful campaigns. Emerge Kentucky's curriculum includes training

in public speaking, fundraising, campaign strategy, field operations, labor and endorsements, networking, media skills, messaging, and ethics in politics. Participants complete seven sessions over a six-month period. As a statewide program, classes are held at various locations around Kentucky including Louisville, Lexington, Northern, Eastern, and Western Kentucky.

The deadline for applications is November 11, 2011 and the application fee is \$50. The application is available online at <http://www.emergeky.org/apply>.

Emerge Kentucky's advisory board includes the following members: former Governor Martha Layne Collins, Auditor Crit Luallen, Secretary of State Elaine Walker, First Lady Jane Beshear, Senator Joseph Harter, Former Senator Georgia Davis Powers, Senator Kathy Stein, Senator LeRoy Webb, Reps. Linda Belcher, Leslie Combs, Kelly Flood, Joni Jenkins, Martha Jane King, Mary Lou Marzian, San-

nie Overly, Ruth Ann Palumbo, Rita Smart, and Susan Westrom, Ashley Judd, Carolyn Belcher, Jennifer Chandler, Teresa Isaac, Eleanor Jordan, Betsy Nowland-Curry, Leah McCormick-Adkins, Lillian Press, Mary Karen Stumbo, Dottie Sims, Lois Combs Weinberg, and Virginia Woodward.

Board members from across Kentucky include: Jennifer A. Moore, Gina Berry, Priscilla Johnson, Virginia Johnson, Kathleen Lape, Mary Ellen Wiederwohl, Wanda Mitchell-Smith, Dwinelva Zackery, Melinda Niemann, Kennita Roy, Linda Scholle Cowan, Loren Wolff, Jacqueline Ellis, Peggy Kennedy, and Kathy Groob. For information about Emerge Kentucky, contact Elizabeth Sawyer at 502-964-0009 or visit [www.emergeky.org](http://www.emergeky.org).

## Harold Primary Care

- Family Medicine
- Harold Imaging
- CT • X-Ray
- Outpatient Physical Therapy
- On-Site Pharmacy

Now offering Free Health Screenings

Harold Primary Care  
241 Parkwood Blvd. Harold, KY  
Open Mon - Fri, 8am - 5pm  
478-8787  
Walk-ins Welcome

**FOR SALE OR LEASE**  
J & J Liquors  
Betty Layne • 606-888-8387

**HIGHLANDS HEALTH SYSTEM**  
[highlandshealthsystem.org](http://highlandshealthsystem.org)



# First Presbyterian begins collecting Nov. 14 for Operation Christmas Child

## Volunteers working to collect gifts for needy kids this Christmas

**PRESTONSBURG** — While many Prestonsburg families are busy with holiday activities, a group of local volunteers is focused on filling empty shoe boxes with school supplies, toys, hygiene items and notes of encouragement for needy kids overseas. Prestonsburg families are participating in the world's largest Christmas project of its kind — Operation Christmas Child, an effort that has hand-delivered 86 million gifts to kids worldwide since 1993.

This year-round project of Samaritan's Purse is coming to its peak, as local businesses, churches and schools prepare to collect gift-filled shoe boxes during National Collection Week, Nov. 14-21. Volunteers can drop off their shoe box gifts at one of the bustling locations in the area to help kids in over 100 countries who they are loved and not forgotten.

First Presbyterian Church, in Prestonsburg, is a local dropoff point for the charity. The church, located at 1430 North Lake Drive, will be taking donations at the following times:

- Nov. 14 — 10:30 to 11:30 a.m.
- Nov. 15 — 1 to 2 p.m.
- Nov. 16 — 10:30 to 11:30 a.m.
- Nov. 17 — 1 to 2 p.m.
- Nov. 18 — 1 to 3 p.m.
- Nov. 19 — 10 a.m. to 2:30 p.m.
- Nov. 20 — 1 to 5 p.m.

Operation Christmas Child, a project of international Christian relief and evangelism organization Samaritan's Purse,

uses whatever means necessary to reach suffering children around the world with these gifts of hope, including sea containers, trucks, trains, airplanes, boats, camels and dog sleds. Tracking technology also allows donors to "follow" their box to the destination country where it will be hand-delivered to a child in need.

To register shoe box gifts and find out the destination country, use the Follow Your Box donation form found at [www.samaritanpurse.org/occ](http://www.samaritanpurse.org/occ).

**What you can do to get involved**

- Prepare — Enlist families, churches, scout troops, community groups and businesses to take part in creating shoe box gifts for needy children worldwide.
- Pack — Fill shoe boxes with school supplies, toys, necessity items and a letter of encouragement. Step-by-step shoe box packing instructions are available at [www.samaritanpurse.org/occ](http://www.samaritanpurse.org/occ).
- Process — Sign up to join Operation Christmas Child volunteers at collection sites in Prestonsburg as part of the effort to prepare millions of shoe box gifts for delivery to underprivileged kids on six continents.

For more information on how to participate in Operation Christmas Child, call (615) 778-0046 or visit [www.samaritanpurse.org/occ](http://www.samaritanpurse.org/occ). National Collection Week for gift-filled shoe boxes is Nov. 14-21; however, shoe box gifts are collected all year at the Samaritan's Purse headquarters in Boone, N.C.

as companies make further wholesale cost adjustments throughout the heating season. They are passed on to consumers on a dollar-for-dollar basis by local distribution companies. The amount of gas this winter for use during the winter is at above-average levels, according to data from the federal Energy Information Administration. That suggests adequate supplies and stable prices through the heating season, unless there is widespread and extreme cold weather.

Wholesale natural gas prices last spiked in 2008, and then declined even more abruptly in 2009. Prices have remained in a fairly narrow range since then.

By federal law, natural gas prices are not regulated at the wholesale level and generally fluctuate with supply and demand. Under Kentucky law, gas companies are entitled to recover the wholesale cost of the gas delivered to customers, including the fees they pay to interstate pipelines to transport the gas to their retail distribution systems. Companies are not allowed to earn a profit on their gas commodity costs. The companies' gas cost adjustments are reviewed by the PSC to make sure they accurately reflect the wholesale cost of gas.

About half of the natural gas used for winter heating is put into storage in the summer. The price at which it was purchased is the price passed through to consumers. Until the last decade, natural gas prices typically were considerably lower in the summer than in the winter. That gap has narrowed in recent years, due in large part to the increased use of natural gas to generate electricity.

Kentucky's five major natural gas distribution companies expect their adjusted wholesale cost this November to be, on average, \$5.56 per 1,000 cubic feet (mcf), down \$1.4 (2 percent) from an average of \$5.70 per mcf a year ago.

In August 2008, the average adjusted wholesale cost peaked at \$15.17 per mcf. In November 2002 the average adjusted wholesale cost was \$4.90 per mcf.

The wholesale cost of natural gas now accounts for about two-thirds of a typical consumer's winter bill. A typical Kentucky customer using 10 mcf next month will pay a total monthly bill of \$96.90, down \$1.29 or about 1 percent — from the \$98.19 average bill a year ago.

That increase is an average for Kentucky's five major local natural gas distribution companies as of November. It will change

Wholesale costs and base rates vary by company. The base rates reflect a utility's day-to-day operating costs, including the cost of delivering gas, as well as a return on equity for company shareholders.

About 44 percent of Kentuckians heat their homes with natural gas. Those who heat with propane (10 percent) and fuel oil (3 percent) will see higher costs this winter. The 39 percent of Kentuckians who use electric heat are likely to see somewhat higher bills on average this winter, due to a combination of base rate increases for some utilities and an increase in the price of coal over the past year. The cost of coal — used to generate more than 90 percent of Kentucky's electricity — is a major factor in the price of electricity.

Although the slow pace of economic growth has helped keep fuel prices stable, it also has left many Kentuckians struggling to pay their heating bills, Armstrong said. Heating assistance is available from local community action agencies and from utility companies, but funds are limited and sometimes run out during the heating season, he said.

"Do not allow a difficulty in paying a utility bill to become a crisis," Armstrong said. "Now is the time to take the necessary steps if you think that you may need assistance in paying your heating bill this winter."

A video presentation on natural gas prices during the coming winter is available on the PSC website, <http://psc.ky.gov>, as well as on the PSC's YouTube channel, <http://www.youtube.com/KYPSC>. The 18-minute video can be viewed or downloaded in Windows media format.

The PSC is an independent agency attached for administrative purposes to the Energy and Environment Cabinet. It regulates more than 1,500 gas, water, sewer, electric and telecommunications utilities operating in Kentucky and has approximately 100 employees.

# PURINA DONATES DOG FOOD

Sixteen animal shelters and rescue agencies from Kentucky, Ohio, West Virginia, Virginia and Tennessee were the beneficiaries of a donation by Purina.

The pet food company donated 56 pallets of food to the agencies. Shown at left is Mary Daniels, who operates Transporting and Rescuing Animals in Need, in Faintsville, who organized the giveaway, with Greg Hansley, of the Sisk Animal Center, of Kingsport, Tenn., and Tim Boyd, owner of Surplus Products, of Harold, which donated its parking lot to serve as the staging area for the event.

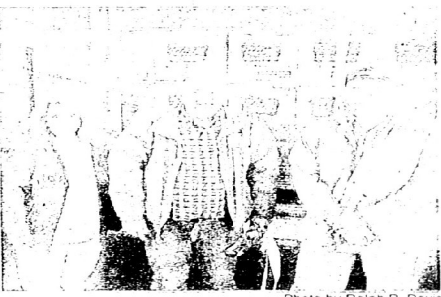


Photo by Ralph B. Davis

# Study finds doctors often overestimate how well they communicate in English as a second language

A study appearing in Health Services Research shows physicians who speak English as a second language, an increasing phenomenon in the U.S. and parts of Kentucky, often overrate how well they are communicating with patients.

The finding is the result of a language scale adopted by the Palo Alto Medical Foundation, which rates language proficiency in five levels: poor, fair, good, very good and excellent.

After the new scale was introduced in 2009, out of four of physicians who participated changed their rating. Of the 258 participants, 31 who had considered themselves "fluent" downgraded to "good" or "fair." Just 11 percent deemed their proficiency "excellent." Seventeen percent used "very good" and 38 percent said they were "fair," reports Glenda Fauntleroy of research-reporting service Newswise. "Being 'fair' was

defined as 'can get the gist of most everyday conversations but has difficulty communicating about health care concepts.'"

"This is a very tricky area as this demonstrates how many providers overestimate their proficiency in another language," said Joseph Beantcourt, director of the Disparities Solutions Center at Massachusetts General Hospital in Boston. "This can lead to miscommunication and even medical errors."

# Natural gas costs forecast to be about the same this winter

With wholesale natural gas prices changing little over the last year, Kentucky customers will be paying about the same for comparable quantities of gas this winter, the Kentucky Public Service Commission (PSC) announced today.

Natural gas prices have remained fairly constant since late 2009, in contrast to the large fluctuations in prior years," PSC Chairman David Armstrong said. "Increasing gas supplies should provide a measure of price stability in the coming years as well."

But weather — not price — is always the largest factor in determining the amount of energy that consumers use to heat their homes and thus the size of their heating bill, Armstrong said. Improvements in energy efficiency and conservation are the only way to permanently control energy bills, he said.

"Consumers should always look for ways to reduce energy usage," Armstrong said. "It is wise to invest in energy savings from lower heating costs to make permanent improvements, such as weatherization, that will pay off in long-term savings."

On average, Kentucky customers can expect to pay about 1 percent less this November than if they consume 10,000 cubic feet of natural gas. That average total bill for 10,000 cubic feet — including base rates — is almost \$54 less than in November 2008.

Changes in individual rates will vary by company and customer usage.

Wholesale costs this year are, on average, about 2 percent lower than a year ago. None of Kentucky's five large natural gas distribution companies have received any price increases in the last year.

Wholesale prices over the last two years have remained at a relatively stable peak prices seen in 2008. Wholesale costs make up the largest portion of re-

tail gas bills during the heating season. They are passed on to consumers on a dollar-for-dollar basis by local distribution companies. The amount of gas this winter for use during the winter is at above-average levels, according to data from the federal Energy Information Administration. That suggests adequate supplies and stable prices through the heating season, unless there is widespread and extreme cold weather.

Wholesale natural gas prices last spiked in 2008, and then declined even more abruptly in 2009. Prices have remained in a fairly narrow range since then.

By federal law, natural gas prices are not regulated at the wholesale level and generally fluctuate with supply and demand. Under Kentucky law, gas companies are entitled to recover the wholesale cost of the gas delivered to customers, including the fees they pay to interstate pipelines to transport the gas to their retail distribution systems. Companies are not allowed to earn a profit on their gas commodity costs. The companies' gas cost adjustments are reviewed by the PSC to make sure they accurately reflect the wholesale cost of gas.

About half of the natural gas used for winter heating is put into storage in the summer. The price at which it was purchased is the price passed through to consumers. Until the last decade, natural gas prices typically were considerably lower in the summer than in the winter. That gap has narrowed in recent years, due in large part to the increased use of natural gas to generate electricity.

Kentucky's five major natural gas distribution companies expect their adjusted wholesale cost this November to be, on average, \$5.56 per 1,000 cubic feet (mcf), down \$1.4 (2 percent) from an average of \$5.70 per mcf a year ago.

In August 2008, the average adjusted wholesale cost peaked at \$15.17 per mcf. In November 2002 the average adjusted wholesale cost was \$4.90 per mcf.

The wholesale cost of natural gas now accounts for about two-thirds of a typical consumer's winter bill. A typical Kentucky customer using 10 mcf next month will pay a total monthly bill of \$96.90, down \$1.29 or about 1 percent — from the \$98.19 average bill a year ago.

That increase is an average for Kentucky's five major local natural gas distribution companies as of November. It will change

as companies make further wholesale cost adjustments throughout the heating season. They are passed on to consumers on a dollar-for-dollar basis by local distribution companies. The amount of gas this winter for use during the winter is at above-average levels, according to data from the federal Energy Information Administration. That suggests adequate supplies and stable prices through the heating season, unless there is widespread and extreme cold weather.

Wholesale natural gas prices last spiked in 2008, and then declined even more abruptly in 2009. Prices have remained in a fairly narrow range since then.

By federal law, natural gas prices are not regulated at the wholesale level and generally fluctuate with supply and demand. Under Kentucky law, gas companies are entitled to recover the wholesale cost of the gas delivered to customers, including the fees they pay to interstate pipelines to transport the gas to their retail distribution systems. Companies are not allowed to earn a profit on their gas commodity costs. The companies' gas cost adjustments are reviewed by the PSC to make sure they accurately reflect the wholesale cost of gas.

About half of the natural gas used for winter heating is put into storage in the summer. The price at which it was purchased is the price passed through to consumers. Until the last decade, natural gas prices typically were considerably lower in the summer than in the winter. That gap has narrowed in recent years, due in large part to the increased use of natural gas to generate electricity.

Kentucky's five major natural gas distribution companies expect their adjusted wholesale cost this November to be, on average, \$5.56 per 1,000 cubic feet (mcf), down \$1.4 (2 percent) from an average of \$5.70 per mcf a year ago.

In August 2008, the average adjusted wholesale cost peaked at \$15.17 per mcf. In November 2002 the average adjusted wholesale cost was \$4.90 per mcf.

The wholesale cost of natural gas now accounts for about two-thirds of a typical consumer's winter bill. A typical Kentucky customer using 10 mcf next month will pay a total monthly bill of \$96.90, down \$1.29 or about 1 percent — from the \$98.19 average bill a year ago.

That increase is an average for Kentucky's five major local natural gas distribution companies as of November. It will change

The Floyd County Times

**Virtual Costume Party**

Sponsored By: Deskins Motors

Submit a photo of your creative costume to be a part of our Virtual Costume Party! It's easy to enter. Just submit a photo of yourself, you & your friend(s), or your child in costume, at [floydcountytimes.com](http://floydcountytimes.com) so it can appear in the "Virtual Costume Party". All entries will be automatically entered in the contest to win great prizes! Contest Starts October 24th

1. Infant/Toddler Sponsored by: **PRETENDERS**

2. Age 5-12

3. Adults

4. Group

**DESKINS MOTORS**

1-800-521-9063 • 1-606-437-1300

[WWW.DESKINSMOTORS.COM](http://WWW.DESKINSMOTORS.COM)

Hours: Monday, Friday, 9:30 am - 6 pm / Saturday, 9 am - 5 pm

**RIVERFILL 10**

218 W. FIVE POINTS, FLOYD COUNTY, KY 40325

606-432-2957

11/04-11/10/11

**CINEMA 1**  
THE FIRM (R) Mon-Thurs 6:45, 9:15 • Fri 4:15, 6:45, 9:15 Sat-Sun 1:45, 4:15, 6:45, 9:15

**CINEMA 2**  
FOOTLOOSE (PG-13) Mon-Thurs 5:50, 9:20 • Fri 4:20, 6:50, 9:20 Sat-Sun 1:50, 4:20, 6:50, 9:20

**CINEMA 3**  
IN THE NAME OF THE FATHER (R) Mon-Thurs 7:00, 9:20 • Fri 4:20, 7:00, 9:20 Sat-Sun 2:00, 4:30, 7:00, 9:20

**CINEMA 4**  
REAL STEEL (PG-13) Mon-Thurs 6:45, 9:15 • Fri 4:15, 6:45, 9:15 Sat-Sun 1:45, 4:15, 6:45, 9:15

**CINEMA 5**  
COURAGE UNDER FIRE (PG-13) Mon-Thurs 6:40, 9:15 • Fri 4:15, 6:40, 9:15 Sat-Sun 1:30, 4:00, 6:30, 9:15

**CINEMA 6**  
PUSS IN BOOTS 3D (PG) Mon-Thurs 7:15, 9:15 • Fri 4:20, 7:15, 9:15 Sat-Sun 2:20, 4:30, 7:15, 9:15

**CINEMA 7**  
A VERY HARD DAY (R) Mon-Thurs 7:15, 9:30 • Fri 4:30, 7:15, 9:30 Sat-Sun 2:30, 4:30, 7:15, 9:30

**CINEMA 8**  
TOWER HEIST (PG-13) Mon-Thurs 7:25, 9:25 • Fri 4:25, 7:25, 9:25 Sat-Sun 2:05, 4:25, 7:05, 9:25

**CINEMA 9**  
PARANORMAL ACTIVITY 3 (R) Mon-Thurs 7:20, 9:30 • Fri 4:30, 7:20, 9:30 Sat-Sun 2:20, 4:30, 7:20, 9:30

**CINEMA 10**  
THE THIND (R) Mon-Thurs 7:10, 9:30 • Fri 4:30, 7:10 Sat-Sun 4:30, 7:10

**CINEMA 11**  
DREAM HIKERS (PG-13) Mon-Thurs 9:20 • Fri 9:20 Sat-Sun 2:20, 9:20

8PM CAPTION  
11/04/11 SATURDAY 1:30 ONLY

**A TERRIBLE THING HAPPENS WHEN YOU DON'T ADVERTISE. NO ONE NOTICES YOU**

**The Times**

606-886-8506

[www.floydcountytimes.com](http://www.floydcountytimes.com)

ADVERTISING RESULTS

# Community Calendar

Calendar items will be printed as space permits. Editor's note: To announce your community event, you may hand-deliver your item to The Floyd County Times office, located at 263 S. Central Avenue, Prestonsburg, or mail to: The Floyd County Times, P.O. Box 390, Prestonsburg, KY 40363; or fax to 606-886-3603; or email to: [fcfeatures@floydcountytimes.com](mailto:fcfeatures@floydcountytimes.com). Information will not be taken over the telephone. All items will be placed on a first-come, first-serve basis as space permits.

**Come hear the Wethington Story**  
CADA (Communities Against Drug Addiction) invites everyone to come hear Charlotte Wethington's message about the disease and the disease of addiction.

After the death of her son, Casey, from an overdose, she initiated the Mathew Casey Wethington Act for Substance Abuse Intervention, a law for involuntary treatment, which allows parents, relatives and friends to petition the courts for treatment on behalf of someone with a substance abuse disorder regardless of age and without criminal charges. The free event will take place Thursday, Nov. 17, with dinner at 5:30 p.m. and Wethington's message following at 6, at Allen Baptist Church, U.S. 23 and Watergap Road.

**Charity auction**  
There will be an auction at 6 p.m., Friday, Nov. 4, to benefit Joshua's Junction, a Christian youth center in Prestonsburg, next to the Strand/Twix theater. Items to be sold include used tools, certificates doctors, tanning and hair salons and dining, and much more. Anyone who wishes may auction items by paying a \$10 entry fee. There will also be door prizes and raffle tickets.

For more information, call Oralee Galloway, (606) 297-1527, or Lydia and Larry Blackburn, (606) 874-2054.

**Tussey reunion**  
The Tussey reunion will be held Nov. 5, at the Pines Building, in Jenny Wiley State Resort Park. For more information, contact Cheryl Shepherd at (606) 886-8863.

**Operation Christmas Child**  
The First Presbyterian Church, in Prestonsburg, will have a dropoff location for the Samaritan's Purse charity project, Operation Christmas Child. Residents and churches are invited to

bring their shoeboxed gifts filled with toys, school supplies, etc. (no food-related items) to teh church, to be sent to needy children around the world. Bibles, children's books and discipleship programs are provided in the language of the child receiving the gift. The 2011 items are Nov. 14-20. For more information and pamphlets explaining the project, contact the church at (606) 886-2214 or Donna at (606) 297-5404.

**Volunteer mentors wanted**  
Mentoring for a Second Chance is a jail-based service program designed to help reduce recidivism and promote positive growth by linking nonviolent offenders with a mentor from the local community. M2C is looking for local men and women who are motivated to make a difference in the life of an individual while having a positive impact on the community.

If you or someone you know is interested in becoming a mentor, contact mentor coordinator Joshua Kinzer, (606) 886-4439, (606) 339-8878, or [jkizer@M2CComp.org](mailto:jkizer@M2CComp.org).

**Veterans service officer**  
VFW Post 5839 in Lancer will have a service officer available every Wednesday, from noon until 4 p.m. Some services offered will be initial claim filing, upgrades, appeals, permanent and total claims and others.

Contact (606) 886-9428 or (606) 297-1973 for more information.

**Free Parenting Classes**  
To determine eligibility, call John 791-9887.

**Communities Against Drug Addiction**  
Floyd County Communities Against Drug Addiction meets at 5:30 p.m. the third Thursday of each month, at Allen Baptist Church.

**Autism Awareness & Support Group**  
2nd Monday of each month, Calvarys Call Church, Lancer, Ky. (6-7 p.m.) Contact a Billie Chain, [eastkyautismawareness@gmail.com](mailto:eastkyautismawareness@gmail.com)

**Autistic Children Support Group plans monthly meeting**  
Support group for Guardians of Autistic Children will meet the first Thursday of every month at the Haven of Rest, 1601 Airport Road, Inez. Call (606) 298-0520 for information.

**Non-profit agency needs foster parents**  
Non-profit agency in

need of foster parents in your area. Financial compensation for foster parent trainings, mileage reimbursement, and 24-7 support are available. All foster children get a medical card, free school lunches, and clothing vouchers/other reimbursements. Call for more information, at 606-886-0163 or visit our website at: <http://www.benchmarkfamily-services.org/>

**Foster parent info**  
Benchmark Family Services is offering a free informational session for anyone interested in becoming a foster parent. If you have ever wanted to help a child in need, this is your chance. Monday, Jan. 24, at 10 a.m. and Wednesday, Jan. 26, at 5 p.m. at Benchmark Family Services Office. For more information, please call (606) 886-0163.

**Auxier Learning Center offers home repair aid**  
Need help with home repairs? The Auxier Lifetime Learning Center can help. We are now taking applications for home repairs. If you or someone you know are low income and need help with repairs on your home, please call 606-886-0709 for your application, or stop by the office at 21 South River Street, Auxier. Office hours: Monday-Friday, 8:00-4:00. Must provide proof of income and ownership.

**FCCHD offers Body Recall exercise classes**  
The Floyd County Health Department offers Body Recall gentle exercise classes every Monday, Wednesday, and Friday, at 9:30 a.m. at May Drive, just off 1428, and 10:30 a.m. at the First Presbyterian Church in Prestonsburg. Classes are free and open to the public. Call 886-2788 for more information.

**Become a Volunteer with Victim Services Program**

You are more likely to be hurt by someone whom you know rather than assaulted on Kentucky's streets by a total stranger. Learn to assist victims of sexual assault, child abuse and domestic violence by becoming a Volunteer with Victim Services Program. Call today to receive an application or our free training program.

Call the Volunteer Coordinator at (606) 886-4323 for further information or to request an application. (The Victim Services Program is a program of Mountain Comprehensive Care Center.)

**OutPatient Drug Treatment Program**  
Narconon warns parents that abuse of addictive pharmaceutical drugs with youth is on the rise with deadly consequences. Learn the signs of drug abuse. Call Narconon for a free brochure on the signs of addiction for all drugs. 877-379-0208. [www.drugsno.com](http://www.drugsno.com)

**Auxier Community Center**  
Free GED classes, Monday-Tuesday and Wednesday, from 10 a.m.-12.

**Free Bible Lessons**  
Write to: Bible Way Outreach Ministry, P.O. Box 3371, Kingsport, TN 37664. Lessons completely free of charge to all interested.

**Need help with addiction?**  
Lifeline of Floyd County "Conquer Chemical Dependency" is a Christ-centered 12-step program offering support to those who are coping with addiction and learning to live drug-free lives. The support group meets on the following schedule:

Mondays, at Minnie (beside pharmacy), from 7-8 p.m.  
Mondays, at Little Mud, Spruce Pine School, from 7-8 p.m.

Tuesdays, in Prestonsburg, in the Van Ark Building, from 2-3 p.m.

Tuesdays, at David, The David School, from 3:30-4:30 p.m.

Wednesdays, at Allen Baptist Church, from 7-8 p.m.

Thursdays, at Allen Baptist Church, from 7-8 p.m.

For more information, call Sheryl Combs at (606) 434-4000, or Tom Nelson at (606) 478-2836.

**Need Help With Home Repairs?**

The Auxier Lifetime Learning Center can help! We are now taking applications for home repairs. If you, or someone you know, are low income and need help with repairs on your home, please call 606-886-0709 for your application, or stop by our office at 21 South River Street, Auxier. Office hours: Monday-Friday, 8-4.

**Hope in the Mountains**

Hope in the Mountains will host public meetings on Mondays, at 9 a.m., at the junction of U.S. 23 and Rt. 80, on Water Gap Rd., behind the Trimble Chapel Church.

Meetings focus will be to offer information in regard to community resources available to women

seeking freedom from drug abuse. Family members are also welcome to attend. The Hope initiative proposes to help women break free from addictive lifestyles to become self-respecting, contributing members of society. Call 874-2008 or 788-1006 for more information.

**Democratic Woman's Club**

The Floyd County Democratic Woman's Club meets the third Monday of each month at 6 p.m., at Prestonsburg City Hall.

**Have an "Out of this World" birthday party!**  
The East Kentucky Science Center is now offering a fun and distinctive party venue for kids of all ages. The Birthday Party package includes rental of a classroom and admission to exhibits and planetarium programs. Must be booked two weeks in advance; limited guests. Call 889-8260 for more information.

**Prestonsburg Rotary Club**

Prestonsburg Rotary Club meets, 12 noon to 1 p.m., at Made From Country at Heart. For additional information, contact Chris Daniel, 886-7354.

**Earn While You Learn**

The Big Sandy Area C.A.P. office is taking applications for its "Senior Training Program." You must be 55 or older to apply. In Floyd, call 886-2929; Johnson, call 789-6515; Magoffin, call 349-2217; Pike, call 432-2775; and in Lawrence, call 638-4067.

**Senior employment program**

Are you a senior citizen on a fixed income struggling with soaring medical bills and living expenses? Could you use some extra spending money but don't know how to get back into the workforce?

If you are at least age 55, the Senior Community Service Employment Program (SCSEEP) may be able to help. Earn extra money, learn new skills, and help your community at the same time! To find out more, call: 886-2929

**Looking for a Support Group?**

Floyd County Alzheimer's Support Group meets regularly at Riverview Manor Healthcare Center. Call the center for meeting times.

Domestic Violence Support Group - The Big Sandy Family Abuse Center holds meetings each Tuesday from 5:30 to 6:30 p.m. The meetings are free of charge. Call 886-6025 for more information. Overeater's Anonymous

meetings held each Wednesday at 6:30 p.m., at the old Allen Baptist Church, located in Allen, just past red light. Call 889-9620 for more info.

**US TOO! Prostate Cancer Survivors Support Group**  
For all men with prostate cancer and their families. Group meets the 3rd Thursday of each month, at 6 p.m., at the Ramada Inn, Paintsville.

**Community Loss Support Group**  
Meets Thursdays at 6:30 p.m., at the Martin Community Center. For more info, call 377-6658. Those who have had gastric bypass surgery most especially welcome to attend. Meetings being offered as support to anyone needing extra support in dealing with weight loss.

**Domestic Violence Hotline - 24-hour Crisis Line**  
Manned by Certified Domestic Violence counselors. Call 886-6025, or 1-800-649-6605. Remember, "Love Doesn't Have to Hurt."

**Disabled?** - You may be eligible for grant money to assist in your daily living. For an application or more information, call 886-4326.

**Adoption Support for Kentucky** - Support group for all adoptive parents (public, private, international, and kinship care), foster parents and all others interested in adoption. To be held the first Monday of each month, at the Department for Community Based Services office, 1009 North Lake Drive, Prestonsburg, from 6-8 p.m. Childcare will not be provided. For more information, contact Debra Slone, adoptive parent liaison, at 432-4110 or 422-7927, or email to: [dslone@eastky.net](mailto:dslone@eastky.net).

**PARENTS!** Contact the Big Sandy Area Community Action Program, Inc. to find out about child care services in your area, the STARS for KIDS NOW licensing standards program, and how you can earn an income by staying home with your own children while caring for the children of others. Find out more by calling Cheryl Endicott at 886-1280, or 888-872-7277 (toll free).

**East Kentucky S.T.A.R.S. Homeschoolers**  
Will hold monthly meetings at the Paintsville Recreation Center. For more information, call Trudy at 889-9333, or 297-5147. Everyone welcome.

**Narcotics Anonymous (NA)** - Each Wednesday, from 7-8 p.m., in the Atrium Conference Room, 2nd floor, May Tower, Pikeville Methodist Hospital. For more info, contact Chris Cook at 606-433-1119 or [christophercook@hotmail.com](mailto:christophercook@hotmail.com).

## Cyber predators have easier access to children because of phones, video games

Child predators have it easier than ever to entice their young victims, due to the ever-growing accessibility of the Internet. "It's a lot easier now than everybody has the Internet in their pocket," Lexington Police Detective David Flannery told Karla Ward of the Lexington Herald-Leader. "Every day that we think of a way to combat it, people are thinking of a way to get around us," Flannery said. "It changes every day, and you have to keep up with it."

Using the World Wide Web to lure children for sex acts has skyrocketed since 1998, when the National Center for Missing and Exploited Children received 707 reports of people trying to entice children via the Internet. In 2008, there were 8,787 reports.

phones remain the primary means of communication, but game systems including Xbox 360, Nintendo DS and Wii also can be connected to the Internet, giving predators another way to gain access to children," Ward reports.

Though parents are becoming more aware, more education is needed, said Erin May Roth, an assistant U.S. attorney with the Project Safe Childhood coordinator for the Eastern District of Kentucky. "What we don't really think about is the fact that their kids are going to sleep with their phone," she said. Flannery is the only police officer in Lexington assigned full-time to investigate Internet crimes against children. While he does not go into detail about his methods to track down predators, the concept in-

volves pretending, "Anything that a kid can do, we can do," Flannery said.

Sometimes officers from several agencies and departments work together. The Kentucky State Police administers an Internet Crimes Against Children Task Force, the state attorney general's office has a similar unit, and because cases can involve a number of jurisdictions, sometimes the Federal Bureau of Investigation, the U.S. Postal Service, the Secret Service and U.S. Immigration and Customs Enforcement are involved.

Mother Frieda Curry, right, discovered her 14-year-old daughter entangled with a 38-year-old man who initially pretended to be 16. She contacted the Richmond Police Department and found more than 40 text

messages and 10,000 pages of messages and videos on the computer. "I was frantic," she said. "I was in the worst state I've ever been in." (Photo by H-L's David Perry)

But Curry, whose daughter is now in college, dealt with the problem and the predator was sentenced in U.S. District Court to 10 years in prison. Thinking about the crimes can be difficult, but "only by shining a light on the problem will we ever hope to find a solution for it," said Assistant Commonwealth's Attorney Lou Anna Red Corn.

**FOR SALE OR LEASE**  
**J & J Liquors**  
Retail Liquor • 50¢-20¢ off  
886-2889

**It will be open for your enjoyment beginning Friday, November 4 and 5 10:00 a.m. to 6:00 p.m.**

Join us for our 6th Annual Christmas Open House with a savings of 20% on all Christmas items. There will be refreshment. Door prize will be given away at the end of the day Saturday. No need to be present to win.

- Gift Certificates
- Gift Baskets
- Custom Florals Always Available

**SOUTHERN HOSPITALITY AND GIFTS**  
EAST, PRESENT AND FUTURE TREASURES

Rt. 321, 1/4 mile past HRMC, Prestonsburg, KY  
Open Mon.-Fri. 10-5; Sat. 10-4 • 606.886.5995

Visit us at:  
[www.floydcountytimes.com](http://www.floydcountytimes.com)



# Haven't quit smoking, lost weight?

## Pay more for health insurance, more companies say

In an effort to keep health-care costs down, companies across the country, including Walmart, are opting to charge workers who smoke or are obese higher premiums than their more healthy colleagues.

The move is the follow-up to a strategy many companies have already tried: to encourage workers to take better care of their health by offering benefits like weight-loss programs or smoking-cessation classes. But with few signs of the health-care landscape changing,

"They're replacing the carrot with a stick and raising costs for workers who can't seem to lower their cholesterol or tackle obesity," reports Jillian Mincer of Reuters.

One example is Walmart, which in 2012 will start charging its smoking workers higher premiums. It will also offer cessation classes. A company spokesman said people who use tobacco cost 25 percent more in health-care services than people who don't. "These decisions aren't easy, but we need to balance costs

and provide quality coverage."

Critics say the move will limit people's freedoms, create employee resentment and hurt the lowest-paid workers hardest. "It's inherently wrong to hold people responsible," said Lewis Malby, president of the National Workers' Institute. "But it's a dangerous precedent."

Though well-intentioned, these policies, critics say, will create bitterness. Mark A. Rothstein, a lawyer and professor at the University of Louisville School

of Medicine, said having a colleague call to ask about a person's weight loss can be seen as intrusive. That's part of the reason why the janitors at the school participate, but "the professors on campus consider it a privacy issue, so we don't get some stranger calling us about how much we weigh."

Nevertheless, many companies are moving forward with the option. In 2012, almost 40 percent of large and mid-size companies will start using penalties to control unhealthy behavior. That's up from

19 percent this year and just 8 percent in 2009, an October survey by consulting firm Towers Watson and the National Business Group on Health shows.

"Nothing else has worked to control health trends," said NBGH Vice President LuAnn Heinen. "A financial incentive reduces that procrastination."

Cleveland Clinic, with a staff of 40,000, has implemented a comprehensive program and seen its health-care costs grow just 2 percent this year. "The effort began several years ago when it banned

smoking at the medical center and then refused to hire smokers," Mincer writes. "It later recognized that having a gym and weight-loss classes wasn't enough to get people to participate. It made these facilities and programs free and provided lower premiums to workers who maintained their health or improved it." Paul Terpeluk, medical director of occupational health at the clinic, said employers have to develop a program and change the culture: "You don't do this overnight."

## Free program that provides boost, inspiration for Appalachian women taking applications

Organization to recruit and train women for elected office

BEREA — For 24 years, nearly 600 women across Appalachia have been learning they have the strength and courage to finish their education and to build the self-esteem they need to find their potential. At no cost to them, women who find themselves in transition and are seeking to be inspired and build their confidence are doing just that through the New Opportunity School for Women, in Berea.

"For me, the NOSW was a chance of a lifetime. I wish every woman could attend. I feel more alive now. I feel like myself again. Before the school, I had gotten so depressed because I felt like my life was over because I couldn't work. Now I feel like I may be able to work again with the education that I'm now getting. Before the NOSW, I felt I was too old to go to college and begin again. Now I know that I'm not — I see a future in my life again," said a NOSW graduate from Norton, Va.

Now is the time to submit applications for the winter, 2012 session. Ap-

plicants who are selected and complete the three-week residential program will find themselves to be more self-sufficient, more confident, and will be an inspiration for their families and community. Additionally, the New Opportunity School starts an alumni network that provides a strong support system for graduates.

The New Opportunity School's unique program has received national recognition on Oprah and in People magazine. The 2012 NOSW Winter Residential Session is February 5-25. The deadline for application is December 1, 2011.

Requests for applications and/or additional information should be addressed to "The New Opportunity School for Women, 204 Chestnut Street, Berea, KY 40403, or by calling 859-985-7200. Our website, www.nosw.org, provides additional information regarding our no-cost program and a printable application."

The New Opportunity School for Women, Inc. (NOSW) was founded in

1987 by Jane B. Stephenson to assist at-risk women of Appalachia and Kentucky in their pursuit of employment, education, and personal growth. The NOSW accepts women over 30 who have completed high school, have a GED (or actively working on a GED), and do not have a college degree. The program provides educational opportunities through classes in building self-esteem, computer basics, leadership development, Appalachian literature, self-defense, understanding violence against women, public speaking, learning how to become enrolled in further education, and cultural field trips and art related events. Job search skills will be identified and participants will learn to write resumes and practice interview techniques. Participants will intern in a field of interest, either on the Berea College campus or in the community. Health screenings include mammograms, pap tests and dental exams. Lodging and meals are provided; grants for travel and childcare are available.

## Kentucky among states to be studied in Common Core implementation

DALLAS — Kentucky will serve as the Demonstration State of a new initiative led by Learning Forward to create a statewide, comprehensive professional learning system to support educators as they implement Common Core State Standards (CCSS) and new student assessments. Georgia, Illinois, New Hampshire, New Jersey, Utah, and Washington will contribute to the development of the system's tools and strategies as Critical Friend States and learn from Kentucky's challenges and accomplishments.

With support from lead funder the Sandler Foundation, Learning Forward will provide coaching and technical assistance to Kentucky and host meetings of the seven states over the next two years of the initiative. Transforming Professional Learning to Prepare College- and Career-Ready Students. Implementing the Common Core. The resources developed through the initiative will be made available to all states as they implement CCSS.

"Congratulations and deepest appreciation to all our partners and supporters, including the Council of Chief State School Officers, our lead Demonstration State and our Critical Friend States," said Stephanie Hirsch, executive director of Learning Forward. "I am confident that this partnership will lead to identification of new practices that substantively advance professional learning that ensures effective Common Core instruction."

Learning Forward and the states will work in partnership with the Council of Chief State School Officers, National Governors' Association, National Association of State Boards of Education and American Association of Colleges of Teacher Education on the initiative.

The potential of the Common Core State Standards and assessments can only be realized through a renewed focus on professional learning," said Susan Sandler of the Sandler Foundation. "The Sandler Foundation is committed to ensuring teachers have the tools and skills they need to prepare our increasingly diverse student to be critical thinkers with the skills needed to solve the pressing problems we face. Through the commitment of the lead and Critical Friend states, we will see new structures, policies and practices influence and spread improvement from classroom to classroom and school to school."

Kentucky was selected from among several states through a competitive process this fall. The Demonstration State and Critical Friend States had to show a commitment to equity, professional development

## Hall participates in District Judges College

FRANKFORT — Floyd District Judge Eric Hall participated in the 2011 Kentucky District Judges College that took place Oct. 18-21 at the Administrative Office of the Courts in Frankfort.

The AOC provided the judicial education program for the state's District Court judges.

The judges received updates on case law and legislation. They also attended sessions on domestic violence, small claims, search and seizure, court technology and changes to the pretrial release process under House Bill 463. HB 463 took effect in

June 2011 and is the most comprehensive overhaul of Kentucky's penal code in more than 30 years. All three branches of government supported the legislation, which is designed to curb the cost of incarceration without compromising public safety.

House Bill 463 brought about many changes to District Court and this college gave judges another opportunity to discuss how we're implementing this legislation," said Nelson County District Court Judge Robert W. Heaton, the newly elected president of the Kentucky District Judges Association.

"We also spent time learning how technology can make our courts more efficient and took an in-depth look at the Fourth Amendment's provisions regarding search and seizure."

District Court judges handle juvenile matters, city and county ordinances, misdemeanors, violations, traffic offenses, probate of wills, arraignments, felony probable cause hearings, small claims involving \$2,500 or less, civil cases involving \$5,000 or less, voluntary and involuntary mental commitments and cases relating to domestic violence and abuse. In Fiscal Year 2011, there were 707,459 District Court cases statewide.

## Despite pledges, soda makers targeting kids, teens more; Pepsi an exception

A study analyzing the marketing practices for 600 products made by 14 companies found there is more advertising of sugary drinks to children, despite industry pledges to the contrary.

Child and teen exposure to TV ads for full-calorie soda doubled from 2008 to 2010. "This increase was driven by Coca-Cola and Dr. Pepper Snapple Group. Children were exposed to nearly twice as many TV ads for sugary drinks from these companies," the report by the Yale Rudd Center for Food Policy and Obesity reads. "In contrast, children were

exposed to 22 percent fewer ads for PepsiCo sugary drink products." PepsiCo makes Mountain Dew, so sugary advertising among youth in Eastern Kentucky that dentists have identified a tooth-decay syndrome of "Mountain Dew mouth."

Coca-Cola, PepsiCo, Dr. Pepper Snapple Group and Kraft Foods produce two-thirds of the 900 products analyzed.

Coca-Cola accounted for three out of four brand appearances seen by children and teens. Nearly two-thirds of all full-calorie soda or energy drink ads on TV included sponsorship of an athlete, sports league or

teams, or an event or cause. In 2010, black children and Hispanic teens saw 80 to 90 percent more TV ads than white children. Marketing on Spanish-language TV is also growing. In 2010, Hispanic children and teens saw nearly twice the number of sugary drink and energy drink ads as in 2008.

The American Academy of Pediatrics says highly caffeinated energy drinks "have no place in the diet of children and adolescents." But in 2010, teenagers saw 18 percent more TV ads and heard nearly twice as many radio ads for energy drinks than adults did.

**KENTUCKY CIRCUIT COURT CLERK EXAMINATION**  
The qualifying examination for the 2012 election for the office of circuit court clerk will be administered by the Administrative Office of the Courts (AOC) on December 3, 2011 at the Embassy Suites in Lexington, Kentucky. This is the only date and location for the exam.

Pre-registration, qualifications, study materials and other details regarding the exam are available at [www.kycourts.net](http://www.kycourts.net). The deadline for pre-registration, which is mandatory, is November 9, 2011.

Questions regarding the exam should be directed to AOC at (502) 573-2350, ext. 40517 or [circuiclerktest@kycourts.net](mailto:circuiclerktest@kycourts.net)

**STRAND TWIN**  
Prestonburg, Kentucky  
606-886-2696  
<http://strandtwin.com>

11/04-11/10/11  
**Cinema 1**  
PARANORMAL ACTIVITY 3 (R)  
Mon-Sat 7:00 - 9:00; Sun (1:30) 7:00 - 9:00

**Cinema 2**  
PUSS IN BOOTS (PG)  
Mon-Sat 7:00 - 9:00; Sun (1:30) 7:00 - 9:00

Sun. Matinee - Open 1:00; start 1:30

**VAGINAL MESH IMPLANT ALERT**  
FDA has issued a safety alert!  
Linking Serious Side Effects To Surgical Mesh Implants

**COMPLICATIONS INCLUDE:**  
Infection; Pain; Urinary Problems; Bowel Perforation; Bladder Perforation; Scarring; Additional Surgeries; Mesh Erosion; Organ Perforation

**For a Free Claim Evaluation Call**  
**Gary C. Johnson, P.S.C.**  
1-800-555-5595  
[www.garycjohnson.com](http://www.garycjohnson.com)

Outstanding Trial Lawyer of the Year Award  
Kentucky Justice Association 2008  
Mariondale Hubbell  
AV Preeminent 5.0 out of 5 Rating  
**Super Lawyers**

Simply the LAW

THIS IS AN ADVERTISEMENT—OTHERS IN FIRM MAY PERFORM SERVICES

**Prestonburg Housing Authority**

We would like to cordially invite you to an Open house in celebration of our newly renovated office on Tuesday, November 8, 2011 from 4 p.m. until 6:00 p.m.

12 Blaine Hall Street Prestonburg, KY 41653  
Phone: 606-886-2717

**Visit us at:**  
[www.floydcountytimes.com](http://www.floydcountytimes.com)

**Davidson Memorial Gardens**  
-NEW SECTIONS NOW AVAILABLE-  
Announcing the opening of two new sections in the cemetery. One section, adjacent to "The Lord's Supper" section offers an opportunity for purchase of multiple adjacent plots. The other section, located next to the "Old Davidson" section and the "Cedar Tree" section also offers the purchase of multiple adjoining plots.

For more information or an appointment, call Paul Hughes at (606) 226-3016.


# HAPPY HALLOWEEN



Left to right: Cheryl Leslie, Carmen Mckenzie, Jerry Fannin

**CARMEN MCKENZIE**  
**1ST PLACE WINNER**  
**CLARKE JUDD 2ND PLACE**  
**WILL CALLIHAN 3RD PLACE**

*Congratulations from The Floyd County Times*

**FREEDOM** 

Level, KY • Located between Pikeville & Prestonsburg on US 23 • 478-1234

**Race to 100**

The race is on at Freedom Ford & Honda of Level. Our temporary lot is overflowing with inventory. Stop in & see why people are saying there's nothing like Freedom!

Color me and return to Freedom to enter to win a \$100 gift card.

**EAST KENTUCKY AUTO WORLD**

Harold Pikeville

**478-AUTO 2886** **606-216-AUTO 2886**

Don't be frightened by a Good Deal

**NO TRICKS. JUST TREATS**

[www.eastkentuckyautoworld.com](http://www.eastkentuckyautoworld.com)

**HALLOWEEN FESTIVAL** TIMES

Friday, Oct. 28th • 6 - 8 pm

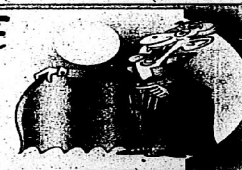
- Toy Walk • Cake Walk • Fish Pond • Face Painting • Corn-Hole
- Ring Toss • Dime Toss • Duck Pond

Treat bags to the first 150 children

**"KIDS" DON'T FORGET TO DRESS FOR OUR "COSTUME CONTEST" FOR CHILDREN UNDER 12**

*\*All proceeds go toward our Resident Christmas Fund*

79 Sparrow St.  
 Prestonsburg, Ky.  
 606.886.9178  
 Honoring One Resident at A Time


**LOS AZTECAS** 

Lake Dr.  
 Prestonsburg, Ky  
 606-886-1919  
 CARRY OUT AVAILABLE

**KIDS UNDER 12 EAT FREE**

CHOOSE TWO REGULAR ENTREES  
 AND THE KIDS CAN CHOOSE A MEAL  
 FROM THE CHILDREN'S MENU FOR FREE\*

*\*Limit 3 children's meals for every 2 regular entrees, beverage not included*

 **Prestonsburg Health Care**

147 N. Highland Avenue  
 Prestonsburg, Ky • 606.886.2378

**THANKSGIVING ROLL SALE**

"The Best You Ever Tasted" Made Fresh

\$4.00 Dozen Baked or Unbaked • \$10.00 Bag of Rolled Dough 5 Dozen

Pick up anytime through Nov. 24th. Ordering ends Nov. 22nd

Our Rolls Are Something to Howl About



# CENTRAL DISCOUNT

12054 MAIN STREET, MARTIN, KY • 606-285-3368

Sale Runs Through  
 Tuesday, November 8th  
 Cash & Carry

## CONSTRUCTION LUMBER

	8'	10'	12'	14'	16'
<b>2x4</b>	<b>\$2.09</b>	<b>\$2.69</b>	<b>\$3.29</b>		<b>\$4.39</b>
<b>2x6</b>	<b>\$3.28</b>	<b>\$3.98</b>	<b>\$5.39</b>	<b>\$5.78</b>	<b>\$6.48</b>

**Premium Construction Studs.....\$2.09**  
**1x12#3.....\$0.89 Per Foot**

## PRESSURE TREATED LUMBER

	8'	10'	12'	16'
<b>2x4</b>	<b>\$2.39</b>	<b>\$3.19</b>	<b>\$3.99</b>	
<b>2x6</b>	<b>\$3.38</b>	<b>\$4.88</b>	<b>\$5.78</b>	<b>\$7.78</b>
<b>2x8</b>	<b>\$4.98</b>	<b>\$6.38</b>	<b>\$7.28</b>	<b>\$9.88</b>
<b>5/4x6</b>	<b>\$3.26</b>	<b>\$4.16</b>	<b>\$4.96</b>	
<b>4x4</b>	<b>\$6.25</b>	<b>\$8.25</b>	<b>\$9.25</b>	

## APPALACHIAN WALNUT

Appalachian Walnut.....**\$ .77 Sq. Ft.**  
 Appalachian Cherry.....**\$ .87 Sq. Ft.**  
 Bristol Gunstock.....**\$ .97 Sq. Ft.**  
 Tennessee Red Oak w/Pad attached.....**\$ 1.17 Sq. Ft.**

**R13 X 15".....40 Sq. Ft. \$11.98**  
**R19 X 15".....49 Sq. Ft. \$15.99**  
**R19 X 23".....46 Sq. Ft. \$16.98**

## PVC PIPE

**1 1/2" PVC Pipe ..... 10' Joint ..... \$3.37**  
**2" PVC Pipe ..... 10' Joint ..... \$4.97**  
**3" PVC Pipe ..... 10' Joint ..... \$8.87**  
**4" PVC Pipe ..... 10' Joint ..... \$12.37**

## GEORGIA-PACIFIC VINYL SIDING

White D-S Doubletaper per Sq. ....**\$7.98**  
 Tan D-S Doubletaper per Sq. ....**\$7.98**  
 Gray D-S Doubletaper per Sq. ....**\$7.98**  
 On-site Color .....**\$8.99**  
 Insulate Garage .....**\$8.99**  
 White Soffit (Per Piece) .....**\$9.99**  
 8" Frieze .....**\$9.99**  
 1" Trim .....**\$4.99**  
 18" Osceola Vinyl Veneer .....**\$5.00**

## VINYL WINDOWS

2030 Vinyl Double-Hung Windows.....**\$39.98**  
 2830 Vinyl Double-Hung Windows.....**\$39.98**  
 3030 Vinyl Double-Hung Windows.....**\$39.98**  
 2824 Vinyl Double-Hung Windows.....**\$39.98**  
 2032 Vinyl Double-Hung Windows.....**\$39.98**  
 6 Panel White Clad Door.....**\$18.00**  
 9-1/2" White Metal Clad Door.....**\$39.00**

## SEPTIC TANKS

500 GALLON.....**\$200.00**  
 750 GALLON.....**\$300.00**  
 1000 GALLON.....**\$450.00**  
 Infiltrator.....**\$1349**

## WATER HEATERS

80 Gallon Electric.....**\$259.00**  
 40 Gallon Electric.....**\$249.00**  
 50 Gallon Electric.....**\$159.00**  
 40 Gallon Gas.....**\$159.00**  
 40 Gallon Propane Water Heater.....**\$249.00**

**5550 Watt Cummins Generator \$699.00**

1500 Watt Utility Heater.....**\$149.98**  
 DuraHeat #R2300 Core Heater.....**\$39.98**  
 6" Fiberglass Stapladder 225lb.....**\$45.98**  
 8" Fiberglass Stapladder 225lb.....**\$75.98**

John Deere #J200 Mining Boots.....**\$157.98**  
 John Deere #J210 Mining Boots.....**\$157.98**  
 Hi-Tec Boots.....**\$35.00**  
 All-Road Wolfie Boots.....**\$35.00**  
 Magnum Boots.....**\$35.00**  
 Caterpillar Boots.....**\$35.00**

20' Extension Ladder 200lb.....**\$84.98**  
 1/2" x 12' x 1/2" Drill Combo Kit.....**\$129.00**  
 4 Gallon Backpack Sprayer.....**\$45.00**

## Plywoods

7/16" OSB.....**\$6.69**  
 1/2" CDX.....**\$12.99**  
 3/4" Plywood.....**\$18.88**

## Paint & Accessories

2-Gallon Flat Wall Paint.....**\$39.97**  
 5-Gallon Aluminum Roof Coating.....**\$149.98**

## POWER NAILERS

Grip-Rite Framing Nailer #GR145.....**\$189.98**  
 Grip-Rite Framing Nailer #GR155.....**\$199.98**

## POWER GUN NAILS

#13 Per Carton - 2500G.....**\$24.98**  
 #12 Per Carton - 2000G.....**\$20.98**

## Compressors

Grip-Rite Compressor #GR240M.....**\$159.98**  
 Grip-Rite Compressor #GR240L.....**\$139.98**  
 1/2" Wire with Ground 250' Roll.....**\$29.98**  
 200 Amp 240 Volt Breaker Box.....**\$29.00**  
 200 Amp 240 Volt Breaker Box.....**\$29.00**  
 Heritage Power 24" Gun Set.....**\$39.00**  
 Heritage Power 30" Gun Set.....**\$39.00**  
 Heritage Power 36" Gun Set.....**\$39.00**  
 Wondercol 5000.....**\$74.00**

**SEASON CLOSEOUT!!**  
**150 QUART GOIT COOLER - \$65.00**

## Roofing

50LB Roll Roofing Black.....**\$74.98**  
 50LB Roll Roofing Brown.....**\$74.98**  
 15LB Roll.....**\$15.77**  
 50LB Roll.....**\$15.77**  
 8" Five-Vin.....**\$10.88**  
 12" Five-Vin.....**\$14.66**  
 Black-Face Underpinning.....**\$6.68**

## Vanity With Top

18" Vanity, White or Oak.....**\$79.98**  
 24" Vanity, White or Oak.....**\$99.98**  
 30" Vanity, White or Oak.....**\$129.98**  
 36" Vanity, White or Oak.....**\$179.98**  
 48" Vanity, White or Oak.....**\$279.98**

**30% OFF KNIVES!** CASE XX • BENCHMADE • Smith & Wesson  
 Ruger and John Deere

# Sports

Section

# B

www.FloydCountyTimes.com

Your BEST source for local and regional sports

email: fcsports@floydcountytimes.com



Rachel Moore

## Rebels close out season 30-11

**By STEVE LeMASTER  
SPORTS EDITOR**  
EASTERN - It was believed that the 2009 Allen Central High School volleyball season was a season of firsts and could not be any better. However, the 2011 ACHS volleyball team concluded its magical season with a run to the KHSAA Volleyball State Tournament.

The 2009 ACHS volleyball squad was the first in the 15th Region to win both the 15th Region All "A" Classic title and the 15th Region championship. Also, Allen Central posted the first win by any 15th Region team when it won a set and caused the match to go to three. It was also the first time an Allen Central volleyball team had won the 15th Region Tournament.

"From the first day of practice, I knew this was going to be a fun season because of this team's personality - they were just a pleasure to coach because they worked so hard and were so dedicated to the program and the team," Allen Central Coach Larry Maynard commented.

So, what did the latest Allen Central volleyball team accomplish? Allen Central became the first volleyball team from the 15th Region to go to the All 'A' Semifinals by defeating two Top 25 ranked teams. In addition to the squads' Allen Central standout Courtney Hodge was named to the All-Tournament Team.

"Our three captains - Kelsey Blevins, Julie Halbert, and Brooke Risner - really worked hard to keep this team on even-keel. Maynard added, "They all get along so well and really support each other - no jealousy, they just want to play and win, no matter who is on the floor." The Rebels prevailed in the 15th Region Tournament by de-

(See REBELS, page 2B)

## Cats roll past Transy in exhibition

**TIMES STAFF REPORT  
LEXINGTON** - Sophomore forward Terrence Jones scored 22 points and pulled down 12 rebounds to lead No. 2 Kentucky to a 97-53 exhibition victory over neighboring Transylvania on Wednesday night at Rupp Arena.

Kentucky's three freshmen that are expected to lead the Wildcats deep into the postseason all performed well during the exhibition opener.

Michael Kidd-Gilchrist scored 19 points, Anthony Davis blocked eight shots and Marquis Teague dished out nine assists to help Ken-

## Eagles turn back KCU in opener

**TIMES STAFF REPORT  
PIPPA PASSES** - Senior Casey Dalton delighted a large home crowd Tuesday night by tossing in a career-high 21 points and leading the Alice Lloyd College Eagles to a 94-72 season-opening victory over the Kentucky Christian University Knights at the Grady Nutt Athletic Center.

Dalton, who missed all of last season due to a foot injury, showed no

ill-effects whatsoever in his first game back. The guard tossed in 14 first half points and led the Eagles to a 47-36 lead at intermission.

Alice Lloyd extended its lead to 16 points in the second half. The double-digit lead, however, wouldn't last. Led by Ciny McKenzie, KCU managed to slice the deficit in half with 12:05 remaining. ALC, receiving a big boost from its bench, then went

on a 12-2 run to put the contest out of reach.

For the Eagles (1-0), Dalton (Nancy, Southwestern High School) was joined by four teammates in double figures as ALC Coach JR Hammond received a balanced effort.

Sophomore Brent Hall (Beaver, June Buchanan High School) tossed in 19 points and pulled down

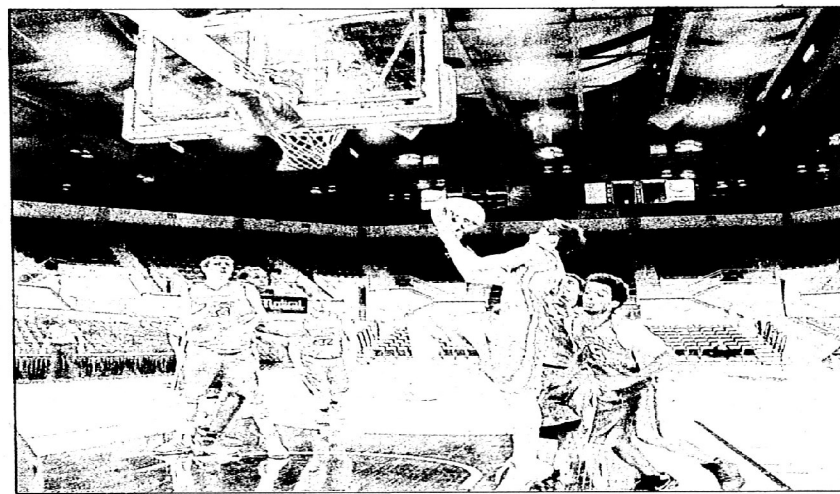


Brent Hall



Casey Dalton

(See EAGLES, page 2B)



Wesley Christian sophomore guard Matthew Ison went up for two of his game-high 18 points in the victory over Oakdale Christian.

## Wesley Christian High School wins in debut

**By STEVE LeMASTER  
SPORTS EDITOR**  
PIKEVILLE - The Wesley Christian High School Circuit Riders cruised to a comfortable 69-20 victory over Oakdale Christian on Saturday at the East Kentucky Expo Center in a season-opener. Wesley Christian established an early lead and never faltered.

The Riders enjoyed an early advantage, leading 41-11 at halftime. Wesley Christian then cruised to its first win in school his-

tory.

Sophomore guard Matthew Ison paced Wesley Christian with a game-high 18 points. Ison excelled all afternoon, shooting three-of-three from behind the three-point line.

Stephen Goble netted 13 points and pulled down 11 rebounds for the Riders in the win.

"Our kids were a little nervous at first," Wesley Christian Coach Jack Jarrell confided. "All the kids played really hard and executed really well. I couldn't

be any prouder of the kids, coaching staff and the support we're getting from the entire school."

The Riders were six-of-13 from behind the three-point line and three-of-six from the foul line. Nine Wesley Christian players provided scoring during the contest.

The Riders will be back on the court today at 6 p.m. as they travel to Chapel Hill, NC to face the Woods Charter School Wolves of the Central Carolina Athletic League.

- Wesley Christian 69.**
- Oakdale Christian 20**
- Wesley Christian (69): Matthew Ison 18, Stephen Goble 13 (11 rebounds), Matt Kidd 8, Ian Hall 8, Jason Fife 7, Corey Dillon 6, Devin Kendrick 5, Tyler Mosley 2, Jesse McKinney 2
- Oakdale Christian (20): Mend Melaku 8, Elratan Melaku 2, Joshua Hou 6, Kevin Rokundo 4
- Wesley Christian.....23 18 14 14-69
- Oakdale Christian.....7 44 5-20



## ALL-STAR GOLFER

**Zachary Click, a senior golfer at Allen Central High School, has been invited to participate in the Senior All-Star Invitational Tournament at the Heritage Hill Golf Club in Shepherdsville, Saturday (Nov. 5). Click is one of only three players from the region and the only player from Floyd County participating in the event. He is the son of Jim and Pam Click of Printer. Click is coached by Dwayne Johnson.**

## Kentucky continues preparation for Ole Miss

**TIMES STAFF REPORT  
LEXINGTON** - The University of Kentucky football team continued its preparation for its matchup on Saturday with South-eastern Conference foe Ole Miss by holding a two-hour workout at the Nutt Training Facility practice fields on a picture-perfect autumn morning Tuesday in Lexington.

After practice, UK head coach Joker Phillips was pleased with his team's performance, including true freshman quarterback Maxwell Smith, who has received most of the first-team reps in practice this week because of the injury of junior quarterback Morgan Newton.

"He looks good," Phillips said about Smith. "It is amazing what a game like he had (can do for a player's confidence). I have never heard him tell anybody what to do because he was always worried about what he had to do, but I saw a lot of that today, am proud of him and the way he is carrying himself."

Phillips said one of the most encouraging parts for Kentucky this season has been how the Wildcats have practiced with intensity, which Phillips believes stems from the intensity that the UK assistant coaches have during practice.

"You have to have juice on the field, too, and that is the thing that is encouraging about our kids is that we practice hard," Phillips said. "A lot of that has to do with the coaches. The coaches are running down the field, chasing them down the field, telling them to 'get in the huddle, get in the huddle.' Those are the things that I consider juice."

Phillips was asked about the Ole Miss offense, which has fared well under the guidance of quarterback Randall Mackey.

"They have played three quarterbacks and this quarterback that they have settled on (Mackey) is a dynamic player," Phillips said. "He plays with his legs and arms. They have some skilled guys, they have two really good running backs: One is usually a jet sweeper and they have some really good young receivers also. They have a huge offensive line and might be the biggest offensive line we have faced all across the board."

On the injury front, tailbacks CoShik Williams and Raymond Sanders saw limited time in practice as they recover from injuries. Wide receiver La'Rod King practice, but did not go through contact, while wide receiver Gene McCaskill and Newton were both limited. Defensive lineman Dante Rumph returned to practice on Wednesday.

Cat Walk Set for 1:15

(See PREP, page 2B)



Rebels

feating the champions from three other districts on the way to capturing the title. Allen Central then became the first 15th Region volleyball team to win a first-round match and advance to the elite-eight in the state tournament. The Rebels also became the first 15th Region volleyball team to ever win a player named to the KHSAA State Volleyball Tournament All-Tournament Team as Rachel Moore was honored. The other first the latest Allen Central squad obtained was becoming the first team sport to ever win two regional championships in ACHS history.

"One thing is for sure, we could not have done any of this without the dedication and heart of the players, the untiring support of the parents and the school," Maynard added. "The administration, the faculty, the staff and the student body supported this program all year and in the tournaments, and I would truly be remiss if I did not thank and compliment the communities in their unwavering support of the volleyball team - it was nothing less than amazing. The Board, the Departments, and Floyd County Schools bent over backwards to help us in any and every way they could." A look back at Allen Central's performance in the KHSAA State Volleyball Tournament follows.

Allen Central 2, Corbin 0; Allen Central defeated Corbin 2-0 (25-12, 25-21)

Eagles

12 rebounds to complete a double-double effort. Sophomore guard Issac Wilson (Corbin, Corbin High School) also added a double-double, racking up 16 points and dishing out 10 assists. Freshman guard Tyler Ailshie (Kingport, Dobyns-Bennett High School) and sophomore forward Shaavn Thompson (Louisia, Lawrence County High School) chipped in 13 points each. Thompson also pulled down 10 boards

in the opening round of the KHSAA State Volleyball Tournament. Rachel Moore paced the Allen Central volleyball team with 10 kills on .556 hitting. Moore also registered four digs. Katie Kendrick record eight kills, two blocks and a block assist for the Rebels. Ciara Jones registered four kills, Courtney Hodge slapped in three. Laken Tackett earned two and Brooke Risner, Julie Halbert and Mandy Hodge added one each. Brooke Risner pitched in 20 assists while Jones and Halbert had one each. Kelsey Blevins and Courtney Hodge landed three service aces each in the win. Mandy Hodge added two service aces and Julie Halbert handed one for the Rebels.

The Rebels committed only one service error while posting a 98-percent. Allen Central recorded 30 kills while hitting at .455. Julie Halbert earned nine digs and Brooke Risner scooped up five in the defensive effort. Courtney Hodge and Laken Tackett dug up four each; Mandy Hodge scooped up three and DeShea Elliott earned two digs.

Allen Central returned 85-percent of all balls hit its way, earning 31 digs.

North Oldham 2, Allen Central 0; North Oldham eliminated Allen Central from the postseason, defeating the Rebels 2-0 (25-7, 25-13).

"We just made too many errors to be competitive and it showed," Maynard confided.

Continued from p1

Although the Rebels only made one service error, they could not get their defensive game going. Allen Central only recorded nine kills while hitting .250. For Allen Central, 23 reception errors and five blocking errors were just too much to overcome. Courtney Hodge led defensively, returning 19 of 21 offerings and earning seven digs. Katie Kendrick recorded four blocks and Laken Tackett had a block, a block assist, and two deflections. Brooke Risner, Rachel Moore, and Julie Halbert had two digs each while Ciara Jones and Mandy Hodge dug up one apiece.

Mandy Hodge had the lone Rebel service ace. Rachel Moore pounded in three kills, 33 hitting for the Allen Central volleyball team. Courtney Hodge and Katie Kendrick thumped in two kills each while Risner and Jones logged one apiece.

"This team is a pleasure to be associated with - they had a great season and I am proud and honored to have been their coach," Maynard said. "I would not have been disappointed in them regardless of their post-season performance because they remained positive, adjusted to changes, and were so coachable. I cannot give them enough accolades but it is and was their positive attitudes, their support, their dedication, and their determination that made coaching them enjoyable."

Continued from p1

four-day stretch."

The Eagles shot 53-percent from the field compared to Kentucky Christian's sub-par 36-percent. The Eagles also won the battle of the boards, 47-36.

Aliee Lloyd will return to the hardwood Saturday when it hosts Warren Wilson in a 5:30 p.m. match-up. The Eagles will travel to Pikeville on Sunday to play Shawnee State University in the BB&T Classic.



The Allen K-5 team is pictured after winning the Shag Campbell title.

Allen K-5 wins Shag Campbell tourney

TIMES STAFF REPORT ALLEN - The Allen K-5 girls' basketball team won the Shag Campbell championship earlier in the school year, defeating Floyd County rival Betsy

Layne 29-11 in the title game. Cassie Jarvis paced Allen with a game-high 18 points. Reese Endicott scored six points. Aleah Newsome netted three and

Alley Jarvis added two for the Allen girls' basketball team.

The Allen girls' basketball program is under the direction of head coach Rick Hancock.

Knights spoil Bears' Senior Night

TIMES STAFF REPORT PIKEVILLE - Kentucky Christian University came to University of Pikeville on Tuesday and spoiled Senior Night at the UPIKE Gym with a 3-1 win over the Bears.

The Knights, who have already won the regional championship in NCCAA Division II, came away with the win by scores of 25-20, 25-18, 21-25, 25-

13 to improve to 28-8 on the season.

Pikeville's loss came in the final home match for its lone senior, Shelby White. The graduate of Walton-Verona High School in northern Kentucky, who plays libero, posted 18 digs in the contest. She entered the night fourth in the league and tied for 20th nationally with an average of 4.7

digs per game.

She now has 1,765 digs in her career, the most in school history.

Offensively, the Bears were paced by sophomore Paige Thacker. The Belfry native had 14 kills and two service aces in the match. Junior Brittany Hodge followed with eight kills, and junior Brooke Parrott contributed with 28 assists.

BOWLING

UPIKE sweeps Racers Classic

TIMES STAFF REPORT - IMA, Ohio The University of Pikeville men's bowling team rolled into town and won the 2011 Racers Classic, hosted by the University of Northwestern Ohio.

The Bears won the tournament in the easiest of ways, as two of their entries squared off in the championship match.

The varsity team started the day on Saturday very slow with scores of, 884, 1001, 927 and found itself in fifth place - some 250 pins out of the cut for the top three teams for Sunday's television show. However, the Bears got to work in Game Four and posted team scores, of 1037, 1159, 1126, & 1078, to finish the day in second place behind the Bears JV (B) team.

The Bears JV (C) team lead the event after one game with a score of 1089. The Bears JV (B) team came out of the gate with team scores, of 1080, 1094, 1096, 1075, 1032, before cooling off just a bit to finish with 975 and 996,

which left them in 1st place for the day.

On the individual side of things, the Bears were represented having three team members qualify for the tournament all-tournament team. Junior Mark Allen, of Mason, Ohio and sophomore John Burdick, of Sewell, N.J., were tied with a 221.14 average, and sophomore Jeff Blund of Webster, N.Y., was fifth with a 219.86 average.

Other notable performances on Saturday included freshman Derek Perkins, of Oklahoma City, Okla., 217.80; freshman Lucas Hohnstein of Besie, Idaho 214.71; sophomore Rowrick Taylor, of Richmond, Ind., 212.75; freshman Tyler Shingle, of Sebring, Fla., 207.00; junior Cory Cotterman, of Sidney, Ohio, 206.00; junior Kyle McInerney, of Davison, Mich., 203.67; and sophomore Fidel Marchena, of the Dominican Republic, 203.67.

On Sunday, with just 16 Baker games left before the final cut to the top three teams for the live televi-

sion sportscast on WLTW Channel 44, the ENTIRE UPIKE Bears program set a school record with a 206.05 game average.

The Bears varsity team qualified first and the Bears JV (B) team was second, followed by the University of Northwestern Ohio. In the first match tournament, UPIKE JV (B) defeated UNOH 415-375. This set up an all-UPIKE Championship Match.

Normally in this situation the championship would not be held, but because of the television special it was. "It was an awesome experience for the guys, getting an opportunity to bowl under the hot lights of TV," said Coach Kyle Wilson. "It was also the first time to my knowledge that a college tournament final match was televised live."

The Bears will be back in action November 5-6, competing in the 2011 Brunswick Southern Classic, in Marietta, Georgia. A Tier 1 event, it is worth double points for the national rankings.

Continued from p1

Prep

p.m.: Fans wishing to participate in the "Cat Walk," cheering the Wildcats when they enter Commonwealth Stadium on Saturday, should be at Gate One of the stadium at 1:15 p.m. Saturday is National College Football Day: Nearly 100 spectators gathered around a field in New Brunswick, N.J., on Nov. 6, 1869 to witness a game unlike anything seen before. The competition between Rutgers and Princeton was "replete

with surprise, strategy, prodigies of determination and physical prowess," to use the words of one player.

On that day 142 years ago, the Scarlet Knights defeated Princeton, 6-4, but more importantly, the players left a lasting legacy that would evolve into the great spectacle of intercollegiate football.

To honor the birth of an American institution, the AT&T Cotton Bowl Classic created "National Col-

lege Football Day," a holiday held annually on the first Saturday of November. Saturday, Nov. 5, will be the eighth observance of College Football Day.

In addition to the Cotton Bowl, the event is sponsored by the Football Writers Association of America, the American Football Coaches Association, the College Sports Information Directors of America and the Athletic Equipment Managers Association.

Dr. Ric Ascani Obstetrician & Gynecologist is accepting new patients at Physicians for Women Center



Ric Ascani, MD Diplomat of the American Board of Obstetricians & Gynecologists

- \* Medical degree from Louisiana State University School of Medicine
\* OB/GYN residency at Tulane University School of Medicine in New Orleans
\* Private practice in Kentucky since 1998
\* Clinical instructor in the Department of Obstetrics and Gynecology at the University of Kentucky and Pikeville College School of Osteopathic Medicine
\* United States Army Veteran

To schedule an appointment, please call

886-8997

Physicians for Women Center 23 Willow Drive - Auxier, Kentucky

Located 3/4 mile from Highlands Regional Medical Center in Prestonsburg

A subsidiary of Big Sandy Health Care, Inc. Providing access to quality health care

Visit us at:

www.floydcountytimes.com



## UPIKE baseball team hosts free clinic

**TIMES STAFF REPORT**  
**PIKEVILLE** — The University of Pikeville baseball team hosted a clinic last weekend and first-year head coach Chad Gassman was pleased with the re-

sults.  
 Around 25 youth baseball players participated in the camp, which was open to the public and free of charge.

"We believe in serving our community and giving back," said Coach Gassman. "We were happy with the turnout and hope this is something we can see grow in the future."

## MSU outlasts EKU, captures OVC volleyball championship

**TIMES STAFF REPORT**  
**RICHMOND** — It took some determination, but the Morehead State University volleyball team, led by a career-high effort from freshman Alex Fuelling, rallied to defeat host Eastern Kentucky 3-1 (25-27, 25-22, 25-20, 25-16) Tuesday night at McBrayer Arena and claim the 2011 Ohio Valley Conference regular season title outright.  
 MSU defeated EKU for the 12th straight time since 2006, improved to 20-6 overall and 15-1 in the OVC, and secured its sixth consecutive 20-win season. The title is MSU's 10th in its history and second straight solo championship. EKU fell to 13-14 and 8-8 in the league. The OVC Tournament will be held at Wetherby Gym at MSU on Nov. 17-19. MSU earned the top seed with the victory.

Fuelling came up with career highs of 14 kills and 14 digs and hit .276. Freshman setter Colbey Cameron also gave the offense a big boost, stepping in during the second set and handing out a career-high 38 assists for the match while also digging nine Colonel at-

tacks. Junior outside hitter Ellie Roberson led the Eagles with 20 kills, her seventh 20-kill effort this year, while redshirt senior Emma Keough had 10 kills as she helped win her fourth OVC title in her career.

Defensively, sophomore libero Leslie Schellhaas turned back 29 EKU attempts and assisted in MSU out-digging the host team 81-64.

The first set was nip-and-tuck with 13 ties. Three consecutive EKU aces gave the hosts a 13-10 lead, and they pushed out to a 17-13 advantage before the Eagles went on a 5-1 run. Two straight kills by Laura McDermott finally tied the set again at 18-all. The Eagles had two set point opportunities at 24-23 and 25-24, but a bad serve and attack error wasted those chances. EKU scored the final three points to win 27-25.

The Eagles fell behind 11-6 in the second set but didn't go down easy. In fact, MSU ran off six consecutive points, capped by a McDermott kill, to take a 12-11 lead. From there, it was close again until the end. With the set tied at 22-22, Fuelling smashed three

straight kills to give her team the 25-22 victory.

Once again, the Eagles started slow, falling behind 7-1 in the third frame, but a 7-1 run, capped by a Keough kill, catapulted MSU into its first lead of the set, 8-7. MSU led later 17-13, but the Colonels fought back to tie it at 17-all. Roberson smashed a trio of kills in the final third of the set, and the Eagles outscored EKU 8-3 to win 25-20.

MSU reversed its trend of falling behind early in the deciding set. The Eagles took a 4-1 lead and never looked back, eventually pulling ahead by as much as 14, at 20-6, before holding off a late EKU rally.

The Colonels were led by Ashley Edmond with 12 kills, while Dena Ott registered 24 digs. Kelsey Kuehner landed seven of EKU's eight service aces. The Eagles limited the Colonels into a .104 attack percentage and doubled up EKU on kills, 68-34.

The Eagles will return home this weekend to host a pair of matches. MSU will host Southeast Missouri Friday night at 7 p.m.

Visit us at:  
[www.floydcountytimes.com](http://www.floydcountytimes.com)



DISH Network delivers more of what you want for less than you'd expect.

Packages starting at:  
**\$19.99** MO  
 For 12 months  
**Local Channels Included!**  
with 24 month Agreement.

**FIVE PACKAGES UNDER \$50**

Prices valid for first 12 months. Requires 24 month agreement.

plus...  
**FREE** SAME DAY INSTALLATION  
in up to 6 rooms!  
**CALL TODAY - INSTALLED TODAY!**

**FREE** 30 PREMIUM CHANNELS FOR 3 MONTHS  
 HBO, cine, TIME, STARZ



Call Now and Save Over \$750 this year on TV!

**1-888-476-0098**

Call 7 days a week 8am - 11pm EST Promo Code: MB0811

DISH Network vs. DIRECTV

	DISH Network America's Top 125	DIRECTV Choice
Price after 12 Months	\$44.99	\$60.99
Service on TV 2	Included	\$6/mo
High Definition Fee	\$0	\$10
FREE HD For LIFE	YES	NO
Local Channels included EVERYWHERE	YES	NO
Watch Live TV Everywhere You Go	YES	NO
<b>TOTAL</b>	<b>\$44.99</b>	<b>\$76.99</b>

Save up to \$384/yr. over DirecTV!



dish NETWORK AUTHORIZED RETAILER ALTITUDE

**A TERRIBLE THING HAPPENS WHEN YOU DON'T ADVERTISE. NO ONE NOTICES YOU**

**The Times** FLOYD COUNTY

606-886-8506

[www.floydcountytimes.com](http://www.floydcountytimes.com)  
 .... for the best ADVERTISING RESULTS





## PASSING ON TO THE PLAYOFFS

Senior quarterback Micah Harlow will lead the Allen Central Rebels into tonight's first round game against visiting Nicholas County. The Bluejackets will visit Eastern for the opening round of the KHSAA Class A State Playoffs.

Join Elsie and Thelma to keep JOBS here.



Vote Tuesday, November 8th!



Alison Lundergan  
**GRIMES**  
Secretary of State  
[alison2011.com](http://alison2011.com)

End for Ms. Grimes for Secretary of State, Noel Caldwell, Treasurer.

## KHSAA Football Playoffs underway

### TIMES STAFF REPORT

The race to fill 12 berths in the 2011 Russell Athletic/KHSAA Commonwealth Gridiron Bowl started Thursday night with 96 playoff games spread across six classes. Last night, Pikeville was playing host to longtime rival Paintsville in Class A. Results from the Pikeville-Paintsville game were unavailable at press time. Postseason action will resume tonight. Action on the opening weekend will wrap up on Saturday af-

ternoon when Rowan County visits Covington Catholic.

Fans can follow score updates as they are received through the Twitter account at @KHSAA-events and through the Rihards/KHSAA Scoreboard.

Live updates are available by searching the hash tag #khsfb. Fans can take the scoreboard on the road through their iPhone and iPad thanks to the Rihards/KHSAA Scoreboard app available through the App Store.

Fans, broadcasters and media outlets are encouraged to Tweet live score updates from games this weekend. To make it easily accessible to all fans simply add the hash tag #khsfb to your tweet.

### UPCOMING KHSAA EVENTS

Nov. 2-3, 5: KHSAA State Soccer Championships. Paul Laurence Dunbar High School, Lexington.

Nov. 12: KHSAA State Cross Country Championships, Kentucky Horse Park, Lexington.

### KHSAA STATE FOOTBALL PLAYOFFS

#### Tonight's Area Games

##### Class 1A State Playoffs

- Nicholas County at Allen Central, 7:30 p.m.
- Phelps at Fairview, 7:30 p.m.
- Lynn Camp at Hazard, 7:30 p.m.
- South Floyd at Raceland, 7:30 p.m.
- Jenkins at Williamsburg, 7:30 p.m.

##### Class 2A State Playoffs

- Shelby Valley at Lexington Christian, 7:30 p.m.
- Danville at Prestonsburg, 7 p.m.
- Betsy Layne at Somerset, 7:30 p.m.
- Middlesboro at Leslie County, 7:30 p.m.

##### Class 3A State Playoffs

- Jackson County at Belfry, 7:30 p.m.
- Russell Sheldon Clark at Breathitt County, 7:30 p.m.
- Lawrence County at Morgan County, 7:30 p.m.
- Magoffin County at Pike County Central, 7:30 p.m.
- Western Hills at Russell, 7:30 p.m.

##### Class 4A State Playoffs

- Harrison County at Ashland Blazer, 7:30 p.m.
- Boyd County at Highlands, 7:30 p.m.
- Holmes at Johnson Central, 7:30 p.m.
- South Laurel at Perry County Central, 7:30 p.m.

##### Class 5A State Playoffs

- South Laurel at Perry County Central, 7:30 p.m.



**FIRST SEASON IN THE BOOKS**

The Alice Lloyd College volleyball team wrapped up its first season in late-October. The ALC volleyball team will now prepare to enter the KIAC as a full-time member in 2012.

**EKU's Denham takes over OVC rushing lead**

**By Nathan Hutchinson  
RICHMOND REGISTER**  
**RICHMOND** — After the first month of the season, Matt Denham was the third-leading rusher on his own team.  
Five weeks later, he's among the national rushing leaders.

The junior running back put together another standout performance last week, racking up 219 yards and two touchdowns in EKU's 34-33 win over Murray State.

In the past four games, the Rineyville native has 803 yards rushing on 115 carries with eight touchdowns.

He currently ranks first in the Ohio Valley Conference in rushing yards a game (112.1) and is tied for ninth nationally among FCS players in the same category.

"Matt's success doesn't surprise me," EKU coach Dean Hood said. "He showed flashes last year in some games and all spring long."

Denham has flourished since he took over as the starting back Oct. 8 at Eastern Illinois. The junior has rushed for at least 140 yards in each of the past four games and has gone for more than 200 yards three times.

The only other FCS player to post three or more 200-plus yard rushing games this season is Indiana State's Shakir Bell.

Denham has carried the ball 35 times in each of the past two weeks and is averaging an impressive 6.6 yards a carry this season.

The junior is the only

back in the OVC averaging more than 100 yards a game (Tennessee Tech's Dentey Gray is second at 99.9 yards a game).

Denham is also currently 10th in the OVC in total offense (12.1 yards a game) and tied for sixth in scoring (6.0 points a game).

"I was talking to someone on defense and I said, 'I had just gone against Matt. EKU senior defensive lineman Emory Attig said, "Out of all the running backs, I don't care who it is, I don't want to go against Matt. He's so quick when he hits the hole, it's just like a flash and it goes by. You've got to be in your gap and ready to play."

Following his performance against Murray State, Denham was named the OVC Player of the Week for the second straight week.

**Pryor hurting, but still playing**

Junior quarterback T.J. Pryor had to have a painful injection before the opening kick-off against Murray State.

The Louisville native has been dealing with a bad case of turf toe, but was in the starting lineup against the Racers.

"It doesn't sound real tough," EKU coach Dean Hood said. "I've been giving him a hard time about it, but it is a painful deal and he battled through it all week."

Pryor didn't seem to let the injury slow him down. The junior completed 14-of-25 passes for 179 yards and two touchdowns in the victory.

That performance moved Pryor into third place on the school's all-time passing list, moving him ahead of Allan Holland.

He now has 4,773 passing yards in his three seasons at EKU.

**Goard back on track**

After a little bit of a mid-season slump, Tyrone Goard is once again making a big-time impact.

In the past two games, the junior wide receiver has eight catches for 91 yards and three touchdowns. Against Murray State, he had five catches for 53 yards and two touchdowns.

Goard had a career-high 133 yards receiving against Austin Peay (Sept. 24), but combined for three catches in the next two games (two at Eastern Illinois and one against SEMO).

The junior has at least one catch in every game this season.

**Raise the flag**

The Colonels continue to be one of the least penalized teams in the OVC, but their opponents haven't committed many infractions either.

EKU is second in the league in penalty yards a game (44.2) and third in total penalties (47).

Opposing squads have been flagged for just 50 penalties for an OVC-low 41 yards a game.

The Colonels have had more than 53 yards in penalties just twice this season — 87 at Austin Peay and 68 yards at Kansas State.

**Reba McEntire to host NASCAR Sprint Cup Series Awards Ceremony Dec. 2 in Las Vegas**

**By Brandy McDonnell  
THE OKLAHOMAN,  
OKLAHOMA CITY**

Reba McEntire sings during a memorial service for the late race-car driver Dan Wheldon in Indianapolis, Sunday, Oct. 23, 2011. Wheldon died Oct. 16, in a 15-car crash in the IndyCar race at Las Vegas Motor Speedway. (AP Photo)

Oklahoma-born and bred entertainment superstar Reba McEntire will serve as the host for the 2011 NASCAR Sprint Cup Series Awards Ceremony on Dec. 2 at Wynn Las Vegas.

The ceremony honors the 2011 NASCAR Sprint Cup champion and other drivers who finished in the top 10 of the final series standings. Increasingly, it has become a full-fledged entertainment experience with appearances by major celebrities.

Reba, who will bring her "All the Women I Am Tour" Friday to Tulsa's BOK Center, indeed qualifies as a "major."

Her Facebook page has nearly 2.5 million "likes" and here's why:

— 34 albums that have sold more than 56 million copies worldwide, with 64 Top 10 hits and 35 No. 1 singles.

— Her reign of No. 1 hits spans four decades and Billboard, Country, Airtel and Mediabase recognized her as the biggest female hit-maker in Country music

history.  
— 15 American Music Awards, 13 Academy of Country Music Awards (in addition to Career Achievement honors), nine People's Choice Awards, seven Country Music Association Awards and two Grammy Awards as well as induction into the Country Music Hall of Fame.

Her television sitcom "Reba," which ran from 2001-07, was the No. 1 sitcom for six consecutive years on two networks.

A Broadway appearance in "Annie Get Your Gun" that garnered a Drama Critics Award.

Reba is one of only four people to be honored with a National Artistic Achievement Award by the United States Congress.

The touring industry's leading trade outlets *Polstar* and *Billboard*'s *Boxscore* have named Reba the No. 1 female country touring artist, selling a combined total of more than 2 million tickets.

In addition to her hosting duties, Reba will perform during the ceremony her hit "Turn on the Radio" from her 2010 album "All the Women I Am," on the Valory Music Co. Other special segments involving Reba also are planned for the season-ending celebration, which will be broadcast by SPEED, SiriusXM NASCAR Radio and Mtn Radio 8 p.m. Dec. 2 from the Wynn's LaFite Ballroom.

"Since we moved the awards ceremony to Las Vegas, we've really increased our focus on the entertainment value for those in attendance and our fans watching and listening at home," said NASCAR Chairman and CEO Brian France in a news release. "Having Reba at our show reflects that she is unbelievably popular, with wide-reaching mainstream appeal. And of course, we also like the fact that she's a fan of auto racing."

Reba's son Shelby Blackstock competes in GRAND-AM Road Racing competition and she attended several of his events this year. She also performed "America the Beautiful" and "God Bless America" prior to this year's NASCAR Sprint Cup race at Indianapolis Motor Speedway, the Brickyard 400 Presented By BigMachineRecords.com.

"I'm delighted to be hosting the NASCAR Sprint Cup Series Awards this year," Reba said in the release. "Country music and NASCAR have shared fans for many years so I'll feel right at home. My family and I have gotten to meet so many nice people in the racing industry this year with my youngest son, Shelby, being one of the competitors. We appreciate so much the super hospitality."

Look for my new interview with Reba Friday, just in time for her Tulsa show.

**NFHS launches first rules application for mobile devices**

**SPECIAL TO THE TIMES**  
**INDIANAPOLIS** — The National Federation of State High School Associations (NFHS), which has written and published playing rules for high school sports throughout its 91-year history, has released its first rules application for mobile devices.

The 2011-12 NFHS Basketball Rules Application (App), which is now available in the Android Market, combines the 2011-12 NFHS Basketball Rules Book and the 2011-12 NFHS Basketball Case Book into one searchable mobile app. The material is cross-referenced to display related content, and is offered as a companion piece to the printed books.

Developed in partnership with ArbieterSports, the 2011-12 NFHS Basketball Rules App is available at this time for Android devices only;

however, the iPhone/iPad version will be released soon. In addition, apps for NFHS rules in other sports will be coming later this year and into 2012.

"We are excited about this technological advancement in our offerings of rules-related material," said Bob Gardner, NFHS executive director. "As the national leader of playing rules for high school sports, this is a natural progression in today's fast-paced, online world. We believe these rules applications will be a great supplement to our printed publications."

Currently, the NFHS writes playing rules for 17 sports for girls and boys competition at the high school level, and annually publishes about 17 sports for girls and boys competition at the high school level, and annually publishes about 17 sports for girls and boys competition at the high school level, and annually publishes about 17 sports for girls and boys competition at the high school level.

Applications are distributed annually throughout the world.

In addition to basketball, the NFHS writes playing rules in the sports of baseball, cross country, field hockey, football, boys gymnastics, girls gymnastics, ice hockey, boys lacrosse, soccer, softball, spirit, swimming and diving, track and field, volleyball, water polo and wrestling.

NFHS playing rules are written specifically for varsity competition among student-athletes of high school age and are intended to maintain the sound traditions of the sport, preserve the balance between offense and defense, encourage sportsmanship and minimize the inherent risk of injury for participants.

The 2011-12 NFHS Basketball Rules App is available for purchase through the following link: 2011-12 NFHS Basketball Rules App.

**PAID ADVERTISEMENT**

LIHEAP Subsidy News Release, October 2011

**Energy Assistance Program Begins November 7**

In an effort to help needy residents with high heating bills, Big Sandy Area Community Action Program will begin taking application for the Subsidy component of the Low-Income Home Energy Assistance Program (LIHEAP), November 7 through December 16, 2011. LIHEAP is a national energy assistance initiative funded by the U.S. Department of Health and Human Services, and is administered in Kentucky by the state Cabinet for Health and Family Services and Community Action Kentucky.

Applications will be taken in alphabetical order, with specific days assigned on the calendar. To avoid delays and long lines, BSACAP encourages applicants to stick to the date scheduled for them.

"We want everyone to know that this is the Subsidy part of LIHEAP, and that it is not on a first come, first served basis," said the agency's executive director James Michael Howell. "We want to stress that everyone who is eligible will be served and receive benefits. Please help everyone involved by applying on the date that corresponds to your last name."

Applicants must present the following:

- Most recent heating bill or verification that heating expenses are included in rent (for example, lease agreements or rent contracts);
- Proof of physical address bring metered utility bill, etc.
- Proof of all household income for the prior month;
- Birthdates for all household members;
- Social Security card or official documentation with Social Security numbers for each member of the household.

The local Social Security Administration is assisting individuals who need income verification from their office by providing a number of ways to access the documentation they need. Individuals may call (888) 450-4458, visit their local office, or go online at [www.socialsecurity.gov](http://www.socialsecurity.gov). Applications will be taken at the local BSACAP services office in each Big Sandy county from 8 am to 4 pm.

Applicants must apply in their county of residence. The office locations, addresses and telephone numbers are listed below:

<b>Floyd County</b>	60 Court Street, Allen	(606) 874-3595
<b>Johnson County</b>	Johnson County Courthouse	(606) 789-6515
<b>Magoffin County</b>	230 Court Street, Third Fl., Paintsville	(606) 349-2217
<b>Martin County</b>	131 South Church Street, Salsersville	(606) 298-3217
	387 E. Main Street, Allen	
<b>Pike County</b>	Roy E. Collier Community Center, Inez	(606) 432-2775
	478 Town Mountain Road, Pikeville	
	The Intergenerational Center, 136 Park Road, Freeburn	

**Alphabetical Schedule for Application Dates**

November		December	
7	A	1	M
9	B	5	N, O, P
10	B	6	Q, R
14	C	7	S
15	C	8	S
16	D, E	12	T
17	F, G	13	U, V, W
21	H	14	X, Y, Z
22	H	15	Open
28	I, J	16	Open
29	K, L		
30	M		

The benefit amount received will be based on the household level of poverty and the type of fuel used for heating. Benefits will be issued for approved applicants, contingent upon funding, and will be made payable to the household's primary or secondary heating fuel vendor.

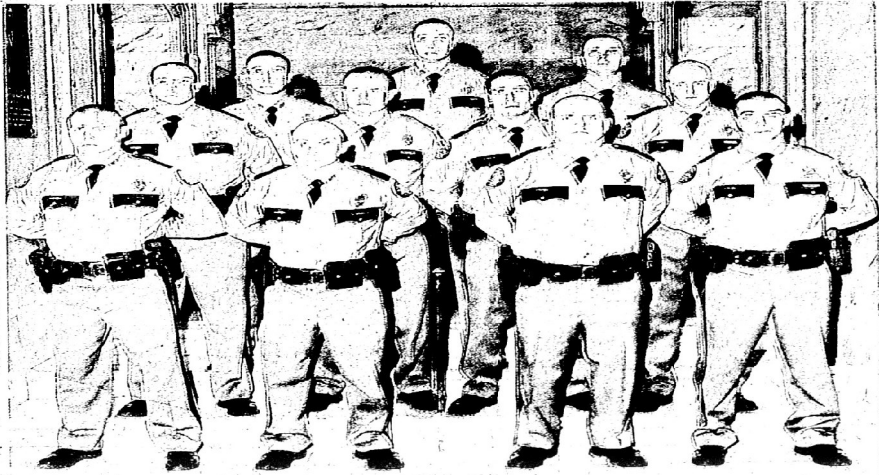


Phone: (606) 886-8506  
Fax: (606) 886-3603  
Members:  
Associated Press  
Kentucky Press Association  
National Newspaper Association

# FLOYD COUNTY Lifestyles

# 6

www.floydcountytimes.com    Phone: (606) 886-8506    Email: floydfeatures@floydcountytimes.com



## Kentucky State Police welcome new troopers

Kentucky State Police Post 9 Pikeville welcomed 11 new troopers, following the Oct. 30 graduation of 60 from the Kentucky State Police Academy Class #89. Timothy Hurt, of Richmond, Bradley Watson, of Flemingsburg, and Clifton Royal, of Berea, will be assigned to Floyd County. Craig Hulsey, of Elizabethtown, Heath Ayres, of Lancaster, Nicholas Hale, of Columbia, Christopher Marcum, of Lexington, Joshua Cox, of Corbin, Jeremy Giles, of Columbia, and Stephen Mirus, of Morehead, will be assigned to Pike County. Zachariah Pennington, of Richmond, will be assigned to Martin, Magoffin and Johnson counties. Left to right, front row: Royal, Pennington, Hulsey and Ayres. Middle row: Hurt, Giles, Hale and Cox. Back row: Mirus and Marcum.

## Movies From the Black Lagoon 'Dead Cert'

**By Tom Doty**  
A turf war amongst London gangsters takes a turn for the macabre when it turns out that one gang happens to be undead in this horror flick that bypassed American cinemas.

It was only a matter of time before someone got the idea to merge the gangster drama with vampires. It's been awhile since British gangsters were in vogue but that's okay as this "Fangsters" effort feels like it was made on the heels of "Lock, Stock, and Two Smoking Barrels." The story finds a London gangster opening a "Gentlemen's Club" so he can become a legitimate businessman. This is the goal many gangster flicks but, ironically, it's always the kiss of death.

Freddie Frankham is ready to go straight. His wife is trying to get pregnant and he has just purchased the "Club Paradise." Unfortunately his scheme attract a Romanian gangster named Livienko. He is a bad dude as evidenced by the toothless thugs who form his entourage. The only thing more challenging to these guys than English is the fine art of flossing.

Livienko makes it clear that he wants the club and makes Freddie an offer he should have refused. Unfortunately Freddie agrees to wager his punch drunk brother will fight one of the Romanian mouth breathers. Livienko wagers three million pounds against the club and Freddie accepts the wager. Bad move as it proves impossible to knock out a vampire boxer from Romania.

By the time Freddie realizes

he's been had the movie only has a half hour left to go. Just in time of a monster mash that pits tough guys against the undead in a murky nightclub. The finale plays like a less energetic version of "From Dusk Till Dawn" but at least the characters are worth caring about, sadly most of them die and the film runs five minutes too long by adding a coda that is flat out dull. That said the atmosphere is top notch and the film respects the old school vampires enough to bring out traditions from Bram Stoker's original novel. The bets is that vampires have to be invited into your home. The British prove to be too polite for their own good and are constantly inviting the bad guys into their homes.

At least these vampires don't glow and the finale is exciting enough as our heroes try to reach a fire alarm so the holy water in the sprinkler system can be used to douse the undead into oblivion. The cast is better than the material with Craig Fairbrass holding his own as the slow moving Frankham. Billy Murray is also good as Livienko but the best bits go to Dexter Fletcher as a two timing associate of Freddie's who absolutely fails in his bid to smoke one by his old gang.

A moderate success that should have come with subtleties as the British slang is tough to decipher at times.

- "He will paint the world red with your blood."
  - "Vampires hate dogs."
  - "He had to stand still while I shot him nicely."
- I shot him nicely."  
2010, unrated.

The Floyd County Times  
**Virtual Costume Party**  
Sponsored By: Deskins Motors  
floydcountytimes.com

### VOTE NOW!!!

Vote for your favorite entry in each of the five categories at [floydcountytimes.com](http://floydcountytimes.com)!  
VOTING STARTS NOVEMBER 1ST



### 1. Infant/Toddler Sponsored by:



PRIZES WILL BE GIVEN TO  
CONTESTANTS MOST  
CUTE AND  
IMPASSIVE/TODDLER  
CATEGORY

- 2. Age 5-12
- 3. Teens
- 4. Adults
- 5. Groups

**DESKINS MOTORS**  
WE'RE ON A MISSION FROM DODGE  
TO SAVE THE PENGUIN AND  
BRING YOU THE  
BEST DEALS ON THE PLANET!  
BEFORE YOU BUY, GIVE DESKINS A TRY!

1-800-521-9065  
1-606-437-1300  
PIKEVILLE, KY

# Strange but True

**By Samantha Weaver**  
 It was British writer and humorist Jerome K. Jerome who made the following sage observation: "It is impossible to enjoy idling thoroughly unless one has plenty of work to do. There is no fun in doing nothing when you have nothing to do. Wasting time is merely an occupation then, and a most exhausting one. Idleness, like kisses, to be sweet must be stolen."  
 According to an international survey of taxicab drivers, passengers who use cabs in London are twice as likely as those in eight other major metropolises to leave a laptop behind when exiting the taxi.

Sharks can live for a century or more.  
 Velcro came to market in 1957, after a Swiss inventor named George De Mestral spent nearly 10 years developing the idea. His inspiration came to him in 1948 on a hike, when he had difficulty removing tenacious little burrs from his clothes. He reasoned that if he could create synthetic burrs, they could be used as fasteners.  
 The Parker Brothers game Monopoly is the best-selling game in history. It's available for purchase in 28 countries, and it can be played in 19 different languages.  
 If you speak some French, you might know

that the phrase "tout a l'heure" means "see you later." You might not realize, though, that that phrase is the origin of the English term "toodle-oo."  
 Chances are, there's a Park Street in your town. It's the most common street name in the United States.  
 Europe is the only continent without a desert. Even icy Antarctica has deserts — including the world's largest cold desert.  
**Thought for the Day**  
 "We need anything politically important rationed out like Pez: small, sweet, and coming out of a funny, plastic head." — Dennis Miller

## RENTAL CENTRAL

**By Tom Doty**  
 TIMES COLUMNIST  
 November got off to a better than average start with three releases worthy of your attention and one that should drive you back to reading.  
**"Water for Elephants"** — Sara Gruen's engrossing novel about circus life and forbidden romance amid the climate of the Great Depression gets the ho-hum treatment here. Robert Pattinson ("Twilight") just doesn't cut it as a romantic lead this time out, but he is convincing as a morbid veterinarian who joins the circus after missing out on a formal degree due to family tragedy.  
 Reese Witherspoon is lovely to look at as the circus' first lady, but there's just no spark between the two.  
 Hal Holbrook steals it as the older version of Pattinson, who narrates the tale. Fans of the book will be most unhappy and others will just be bored.  
**"Cars 2"** — The whole family can enjoy this see-

and go around the track for the Pixar animated hit. This time out, the cars are involved in an international race that turns ugly when sabotage rears its head.  
 The film has fun doing a spin on "James Bond" flicks from the car's point of view. Funner than the first, if not as heartfelt, but the kids will love it and there is an amusing turn by Michael Caine who voices an automobile that works for the British Secret Service.  
**"Crazy, Stupid, Love"** — This romantic comedy defies the odds by being pretty good and avoiding all of those unbelievable coincidences that mar most of the genre's output.  
 Steve Carell is quite good as a man who winds up on the dating scene again when his wife asks for a divorce. Ryan Gosling is also good as a single friend who becomes a romance coach.  
 They also get points here for an honest look at uncoupling, while avoid-

ing the sophomoric humor route.  
**"The Fugitive"** — The complete series finally arrives on DVD in a boxed set that is bargain priced (\$136 bucks on Amazon). You get to experience the whole story of how Richard Kimble escapes from the law when he is accused of murdering his wife.  
 He knows who did it and spends the next four seasons tracking down a one-armed man, while a dogged detective rides his tail.  
 Excellent stuff, thanks to good writing and a solid cast anchored by David Jansen, as Kimble.  
 Tons of great talent show up every season in supporting roles and the show manages to wrap its storyline up with a two-part episode that was the most watched hour of television when it was originally aired.  
 Next week brings the conclusion of the "Harry Potter" films and a dodgy remake called "13."

# Southern States launches holiday food drive

With the holiday season approaching, Southern States Cooperative is joining with local food banks to promote the first annual Southern States Holiday Food Drive.  
 "Farmers in the United States lead the world in producing quality meats, grains, fruits and vegetables," said Southern States President and CEO Tom Scribner. "Essentially, American farmers feed the world, so it's just not right for families right here in the U.S. to go hungry, especially at this time of year."  
 Beginning Nov. 14 and continuing through Dec. 18, many Southern States locations will be working with area food banks to help fill the shelves with food that will go to families in need during the Thanksgiving and Christmas holidays.  
 Locally, the nearest Southern States dealers are Circle C Farm and Feed, on Church Street in Har- old, and Short Farm Supply, in Paintsville. These

participating retail locations will serve as collection centers for customers who bring in canned goods and non-perishable items, and Southern States will make regular deliveries of the donated items to the food banks.  
 According to Turner Gravitt, Southern States Director of Community Relations, the Holiday Food Drive is a natural extension of the company's ongoing commitment to the communities they serve. "We live in these cities and towns," he said. "We work here, our friends are here, so we as individuals — and as a company — have a responsibility to lend a hand, not only to our customers, but also to our neighbors."  
 This "spirit of giving" will benefit the local communities, but it will also be good for the participating Southern States stores.  
 "Our associates will be participating in something that benefits their communities, and that's an indescribably good feeling," said Steve Patterson,

Southern States Vice President of Marketing. "And hopefully, we'll get to meet some folks who have never been in one of our stores before, so really, everybody wins!"  
 Patterson encourages anyone interested in contributing to the Southern States Holiday Food Drive to contact their participating Southern States retail location for more information.  
 Southern States is a Richmond, Va.-based farm supply and service cooperative, founded in 1923 that now has more than 300,000 farmer-members. As one of the nation's largest agricultural cooperatives, it provides a wide range of farm inputs, including fertilizer, seed, livestock feed and pet food, animal health supplies and petroleum products, as well as other items for the farm and home.  
 The cooperative serves its members and non-member customers through 1,200 retail outlets. Please visit <http://www.southernstates.com> for more information.

Do you spend \$100 or more a month at the grocery store?

Wouldn't you like to shop armed with \$100 in grocery coupons of your choice each month?

Turn \$6360\* into \$1,000

\*in county home delivery only

by subscribing today to

# The Times

FLOYD COUNTY, KY

We've partnered with the country's largest grocery coupon clipping service allowing you, our subscriber to select \$1,000 in brand name grocery coupons of your choice for an entire year for free!

If you go to a double redemption supermarket, you could save \$2,000!



## ANNOUNCING

Highlands Regional is now accepting all three Medicaid managed care plans.

- Coventry Cares
- Kentucky Spirit
- WellCare

**HIGHLANDS REGIONAL**  
 The Medical Center of Eastern Kentucky

500 Park Road, Suite 100 • Paintsville, KY 41360  
 806.8511 • [www.hrmc.org](http://www.hrmc.org)

These are not internet coupons. You'll choose from hundreds of brand name coupons every week and have them mailed to your door, postage paid for free. Order up to ten (10) coupons for heavily consumed items! Go to the supermarket with coupons in hand for everything you are going to buy!

1-800-4-A-K-79-2 (to see more) or call our subscription department at 1-800-428-6927 (to start saving)

**YES, I want to save up to \$1,000 by subscribing to the The Floyd County Times today!**

Your Grocery Dough redemption code & instructions will be emailed to you.

New  Renewal  Gift Subscription }  2 years (best value!) — \$95.40  
(In county home delivery only)  1 year — \$63.60  26 Wks. \$31.80

Name \_\_\_\_\_  
 Address \_\_\_\_\_  
 City | State | Zip \_\_\_\_\_  
 Email \_\_\_\_\_

Gift subscription from \_\_\_\_\_  
 Payment:  Cash  Check # \_\_\_\_\_  Credit Card No. \_\_\_\_\_  
 Expiration \_\_\_\_\_ Security Code \_\_\_\_\_

Yes, I want to stay up-to-date with current news & events by receiving headlines and breaking news in my inbox.  
 Yes, I would like to receive special offers and unique deals in my Inbox from local businesses.

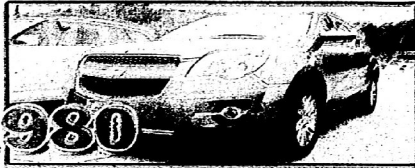
This nonrefundable offer expires November 22, 2011.  
 Mail the form to this address or drop off at your local newspaper office.  
 Grocery Dough - Subscription Offer  
 Six Post Office Square | Clinton KY 40313



# WALTERS MAZDA MITSUBISHI

## 2010 CHEVY EQUINOX

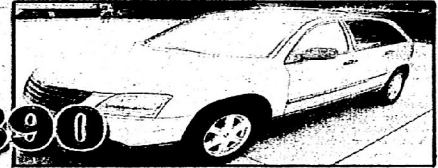
Stk# MB1071,  
LTZ, AWD, Loaded,  
Sunroof, Leather  
Was \$31,990



**\$24,980**

## 2006 CHRYSLER PACIFICA

Stk# FB10338,  
Touring, AWD,  
Leather, Local  
Trade  
Was \$14,980



**\$9,890**

## 2001 CHEVY SUBURBAN

Stk# J1037B, 4x4,  
LT, Leather, Local  
Trade

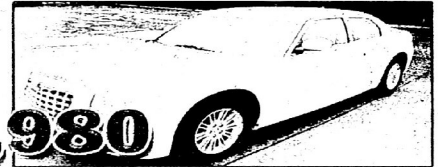


Was \$9,990

**\$6,980**

## 2008 CHRYSLER 300

Stk# C126399C,  
Local Trade,  
Loaded, SAVE

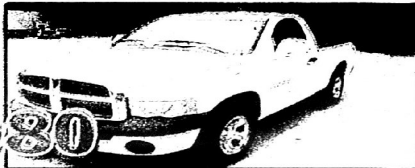


Was \$19,990

**\$12,980**

## 2005 DODGE RAM 1500

Stk# WAT148A  
Was \$10,980



**\$6,980**

## 2010 MAZDA M6

Stk# MB152  
Alloys, LOADED  
Was \$19,980



**\$14,980**

## 2010 MERCURY GRAND MARQUIS

Stk# MB163,  
Premium PKG,  
Leather, Loaded  
Was \$20,980



**\$15,980**

## 2010 FORD ESCAPE

Stk# MB166,  
AWD, Loaded  
Was \$21,980



**\$15,980**

## 2008 HUMMER H3

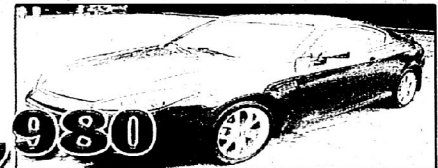
Stk# MB168,  
Alpha Loaded,  
V8, 4x4  
Was \$29,980



**\$24,980**

## 2008 HYUNDAI TIBURON

Stk# MB176,  
GT, V6, Leather,  
Loaded  
Was \$20,980



**\$14,980**

## 2010 VOLKSWAGON BEETLE

Stk# MB186,  
Leather, Low  
Miles  
Was \$19,980



**\$13,980**

## 2011 JEEP GRAND CHEROKEE

Stk# MB185,  
4x4, Alloys  
Was \$30,980



**\$24,980**

## 2004 CHEVY TAHOE

Stk# MB188,  
Z71, 4x4, Leather,  
Loaded  
Was \$15,980



**\$10,980**



LOCATED NEXT  
TO KMART!

## USED CAR DISCOUNT WAREHOUSE

3987 Mayo Trail, (606) 437-9810  
Pikeville KY

**FOOD ON THE TABLE**

**Three ideas for frugal football**

By Sheri Alzeerah  
WWW.FOODONTHE-  
TABLE.COM

The leaves go from green to gold, the summer breeze turns a bit brisk and, of course, the sweet smells of pigskin and artificial turf permeate the air. It all points to one thing — autumn is in full swing and football, the reason for this season, is on everyone's minds and televisions.

Take them from the big screen to the living room by rounding up friends and family for game day at your house. You've got a TV for the watching and couches for the sitting, the rest is a cinch. No need to splurge on ordered-in junk food. Follow the game plan below to host an fun and frugal football fiesta.

**BYOD (Bring Your Own Dip)**

Needless to say, potlucks are instant money-savers when it comes to throwing a party. Instead of shelling out your money to provide for a party's worth of hungry guests, split up the expenses and offer a smorgasbord of dips brought from everyone's homes.

Supply the chips, veggies and crackers, and in turn, have your invitees bring a dip of choice. From queso to salsa French onion to chili to ranch to bean dips to spinach-and-artichoke, your crew won't get bored with the selection. Your only duty is to be the dip patrol. (A nearby stack of paper plates and plastic spoons tend to fend off the double dips.)

**Personalization Station**

You've got the chips. You've got the dips. You've even fired up the grill for a batch of hot dogs and ham-

burgers (check your grocery list for store savings and discounts for the best deal on meats and buns ahead of time). Give your guests something to cheer about by setting up a self-service station to customize their eats.

Instead of trashing your fast food condiment packets, start saving them and organize them in a decorative bowl for the party. Double-check to set out the sliced tomatoes, pickles, lettuce, onions and relish too.

**Go by the Game**  
Rather than putting all of your food on the table at once, keep your guests' tummies happy throughout the game by bringing out a new plate by the quarter.

For the first quarter, go for easy-to-grab finger foods, like chips/dips and trail mix. When the second quarter rolls around, bring out the appetizers-on-a-toothpick (go online for an unlimited supply of cool ideas). Whip out the heavy-duty entrees at the third quarter, and save dessert for the final quarter.

No matter the quarter, opt for homemade eats instead of store-bought. You'll wind up saving money and having control over what you and your friends consume.

Whatever your strategy, the cardinal rule for saving money on a game-day get-together is to plan, plan, plan. By knowing what to serve and what deals you can score at the store in advance, you'll be better equipped for a winning party.

Sheri Alzeerah is a journalist and freelance writer for planning site www.foodonthetable.com.

**HOROSCOPES**

**ARIES** (March 21 to April 19) Some changes might seem confusing at first, especially to an Aries whose impatience levels are pretty shaky this week. Take it one step at a time, Lamb, and soon all will be made understandable.

**TAURUS** (April 20 to May 20) That difficult situation you've been dealing with continues to call for careful handling. Avoid quickly made choices that might not stand up when they're finally put to the test.

**GEMINI** (May 21 to June 20) You still have lots of evaluating to do before you can consider making a commitment. It's better to move cautiously than to risk stumbling into a major misunderstanding.

**CANCER** (June 21 to July 21) A previously

peevish partner offers to be more helpful with your problems. But remember: The final choice is yours. Be guided by what you feel is the right thing to do.

**LEO** (July 23 to August 23) As the Big Cat, you can sometimes be pretty rough on those you suspect of betrayal. The best advice is to put in those claws and listen to the explanation. It might surprise you.

**VIRGO** (August 23 to September 22) Your inner voice usually guides you well. But a note of caution: This is a period of mixed signals for you, so be careful you don't misunderstand the messages you're getting.

**LIBRA** (September 23 to October 23) Cupid's call beckons both single

Librans looking for a new love, as well as couples hoping to strengthen their relationships. A workplace problem is quickly resolved.

**SCORPIO** (October 23 to November 21) It's been a hectic time for you, and you might want to take a break to restore both body and soul. You'll then be set to face new challenges later this month.

**SAGITTARIUS** (November 22 to December 21) It's a good idea to take a more conservative approach to your financial situation right now. Some plans made earlier this year might need readjusting.

**CAPRICORN** (December 22 to January 19) This is a fine time to move boldly into those new opportunities I promised

would open up for you. Check them over, and then choose the best one for you.

**AQUARIUS** (January 20 to February 18) Congratulations. Your self-assurance is growing stronger, and you should now feel more confident about making that long-deferred decision about a possible commitment.

**PISCES** (February 19 to March 20) You're very close to reaching your goal. But be wary of distractions that can lure you off-course and leave you stranded far away from where you really want to be.

**BORN THIS WEEK:** You have an inner sight that helps you see into people's hearts. You would be an excellent psychologist or social worker.

**The Times CLASSIFIEDS work for you!**  
Over 18,000 Readers every issue!

5 Easy ways to place your ad:

1. Call: (606) 886-8506, Ryan Hall
2. Fax: (606) 886-3603
3. E-mail: classifieds@floydcountytimes.com
4. Stop by: 263 S. Central Avenue, Prestonsburg
5. Mail: P.O. 390, Prestonsburg, KY 41663

Our hours: 9 a.m. - 5 p.m.  
DEADLINE: Wednesday 4 p.m.  
Friday 5 p.m. - 5 Wed. 4 p.m.  
Visa - MC - Discover - Check

**The Best Way To Write An Ad:**

- Begin with a key word (item for sale, etc.)
- Use descriptive words to identify your items
- State your price or terms
- Include a phone number and/or e-mail address

NAME: \_\_\_\_\_  
ADDRESS: \_\_\_\_\_  
PHONE: \_\_\_\_\_

Write your ad here:  
(approximately 18 lines per line)

CREDIT CARD

**Our CLASSIFIEDS Will Work For You!!!**

**TO YOUR GOOD HEALTH**

**Take a rest, my restless legs**

By Paul G. Donohue, M.D.  
KING FEATURES SYNDICATE  
DEAR DR. DONOHUE: I would like to know more about restless leg syndrome. — J.J.

**ANSWER:** Roughly 7 percent of women and 10 percent of men suffer from restless leg syndrome. That gives you a lot of fellow sufferers. People describe it in many ways. Some say it's an aching in their legs. Others describe it as a creeping-crawling sensation. No matter how people express the feeling, it makes them get up and move around. Activity lessens or gets rid of the sensations, but they can and do come back. They usually appear in the evening or at night when people are sitting or when they get into bed.

No one is sure what causes the syndrome. Things that lessen its intensity and frequency are cutting back on caffeine, stopping smoking and exercising daily. Eliminating alcohol is a most helpful remedy.

Sometimes restless leg syndrome is associated with iron deficiency and the anemia due to iron deficiency. Your doctor will want to check you for this. Pramipexole (Mirapex) and ropinirole (Requip), both drugs for Parkinson's disease, are used for this syndrome, even though it has no relationship to Parkinson's disease. They stimulate certain brain areas that control movement. Levodopa, another Parkinson's medicine, also is prescribed. There are others, should these fail.

Periodic limb movements of sleep is another condition that frequently occurs along with restless leg syndrome. It's involuntary movements of the legs and feet during sleep. The kicking and jerking last about two seconds and recur every 20 to 40 seconds. Often the affected person is unaware of them. The best partner plays a nighttime role of being a drop-kicked

football and is quite aware of what's happening. The affected person is quite tired during the day. The same medicines used for restless leg syndrome can be used here, too. Daily exercise lessens or gets rid of the nocturnal movements.

The booklet on restless leg syndrome and nighttime leg cramps explains both conditions. To obtain a copy, write to: Dr. Donohue, No. 306W, Box 536475, Orlando, FL 32853-6475. Enclose \$5.00 or money order (no cash) for \$4.75 U.S./\$6 Canada with the recipient's printed name. Please allow four weeks for delivery.

**DEAR DR. DONOHUE:** I have puffy bags under my eyes. They look like they have water in them. I am an 85-year-old woman.

What's the best way to treat them? They aren't getting any better. I use ice on them, and it helps, but they come back. — M.C.

**ANSWER:** Those puffy bags under your eyes aren't filled with water; they're globs of fat. In younger years, your strands of fiber held them in place. With age, those strands weaken, and the fat bulges out. Look around and watch for them in people over 60 have them. They're not a sign of illness.

I have seen all sorts of ads for cream and gels that say they can shrink these bags. I can't vouch for any of them. I don't know if they work. I have reservations. One way to correct them is surgical removal. You can forget the ice treatment unless you want to keep it up. It's not a solution.

**Dr. Donohue regrets that he is unable to answer individual letters, but he will incorporate their questions in his column whenever possible. Readers may write him or request an order form of address of health newsletters at P.O. Box 536475, Orlando, FL 32853-6475.**

**Legals**

**NOTICE OF INTENTION TO MINE**  
Pursuant to Application Number 898-0870, Renewal

(1) In accordance with the provisions of KRS 350.055, notice is hereby given that Vining Acquisition Group, LLC, 2005 Webster Road, Summersville, WV, 26681 has applied for renewal of a permit for a surface and underground coal seam reclamation operation affecting 207.69 acres located at 1.25 miles southwest of Hartley in Pike and Floyd Counties.

(2) The proposed operation is approximately 4.50 miles southwest from KY State Route 1469's junction with KY State Route 610. The proposed operation is located on Turkeypen Branch of Indian Creek of Long Fork of Shelby Creek.

(3) The proposed operation is located on the Wheelwright USGS 7 1/2 minute quadrangle maps. The operation will use the surface contour, area, and high-walt method of mining. The surface area to be disturbed is owned by Collins and Mayo Collieries.

(4) The application has been filed for public inspection at the Department for Surface Mining Reclamation and Enforcement's Pikeville Regional Office, 121 Mays Branch Road, Pikeville, Kentucky 41601. Written comments, objections, or requests for a permit conference must be filed with the Director of the Division of Permits, #2 Hudson Hollow, U.S. 127 South Frankfort, Kentucky 40601.

This is the final advertisement of this application; all comments, objections, or requests for a permit conference must be received within thirty (30) days of today's date.

**Legals**

**PUBLIC NOTICE**  
**NOTICE OF INTENTION TO MINE**  
Pursuant to Application Number 836-5570, Amendment No. 1

In accordance with KRS 350.070, notice is hereby given that FGD Coal, Inc., 4189 Collins Highway, Pikeville, Kentucky 41501 has applied for an amendment to an existing underground coal seam reclamation operation located 2.0 miles southeast of Blue River in Floyd County. The amendment will add 4.20 acres of surface disturbance and will underlie an additional 141.30 acres making a total of 984.60 acres within the amended permit boundary.

The proposed amendment area is approximately 1.50 miles southwest from KY Route 404's junction with KY Route 1210 and located 0.20 miles east of Caney Creek.

The proposed amendment is located on the Martin USGS 7 1/2 minute quadrangle maps. The surface area to be disturbed is owned by Allen-May Land Corporation. The operation will underlie the land owned by Tidan Allen, Ocie and Otis Ousley, Ronald and Iida Scott, and Steve, Jackie, and Rick Ousley.

The amendment application has been filed for public inspection at the Department for Natural Resources, Prestonsburg Regional Office, 3140 South Lake Drive, Suite 6, Prestonsburg, Kentucky 41663. Written comments, objections, or requests for a permit conference must be filed with the Director of the Division of Mine Permits, #2 Hudson Hollow Complex, U.S. 127 South, Frankfort, Kentucky 40601.

This is the final advertisement of the application. All comments, objections, or requests for a permit conference must be received within 30 days of today's date.

**Legals**

**PUBLIC NOTICE**  
**LEGAL NOTICE OF ROAD CLOSURE HEARINGS**

Notice is hereby given that certain landowners residing in the vicinity of the following road have requested that the following roads or portions of roads be discontinued by the Floyd County Fiscal Court: (1) Portion of County Road, Combs Branch in Rock Fork in Floyd County, Kentucky approximately 1000 feet in length and 14 feet wide (2) The County Judge/Executive has been previously authorized or will be authorized to advertise the proposed discontinuance of the road in question and to appoint two (2) viewers for the affected sections of road, in addition to the County Road Supervisor, for the purposes of preparing a report regarding the discontinuance of the road or portion of road in question; and (3) That a final hearing regarding discontinuance of the road in question be scheduled to take place during the Court's Meeting at 10:00 a.m. on November 18th, 2011 in the County Courthouse, located on the Second Floor of the old Floyd County Courthouse, 149 South Central Avenue, Prestonsburg, Kentucky.

Notice is now given by the Floyd County Fiscal

**HIGHLANDS HEALTH SYSTEM**  
**PUBLIC NOTICE**

Notice to Bidders: The Paintsville Medical Office Building Condo Association a non-profit corporation who oversees the Management of Common Space located within the Paintsville Medical Office Building at 713 Broadway, Paintsville KY 41240 is now accepting bids and qualifications from qualified vendors for general monthly and annual accounting services. Bids for accounting services shall include pricing associated with providing monthly and annual accounting services including but not limited to the following: paying monthly invoices, monthly bank reconciliations, quarterly collections of Condo Association fees based on expenses, monthly reporting to Board of Directors and annual tax preparation and filings. Bid information and requirements can be requested by emailing Neil Parsons at HYPERLINK "mailto:nparsons@hmc.org" nparsons@hmc.org or by contacting him at 606-886-7747. Paintsville Medical Office Building Condo Association reserves the right to accept, reject and/or modify any and all bids, to waive irregularities therein, and to make the award in any manner deemed to be in the best interest of the Condo Association.

Bids and qualifications can be mailed to Paintsville Medical Office Building Condo Association at P.O. Box 787, Prestonsburg, KY 41653 to the attention of Neil Parsons or dropped off to Neil Parsons located at Highlands Regional Medical Center at 500 KY Rt. 321, Prestonsburg KY. The deadline to have bids and qualifications submitted is November 19, 2011 at 4:00 PM.

**YOUR BUSINESS**

**Parkview Pharmacy**  
www.refillrx.com/parkview  
Drive-thru available  
Located across from Shrine Baptist Church  
Kristy Matic, Valorie Akers  
(606) 377-2117  
FREE DELIVERY

**EJ&L Electrical Contract**  
Residential & Commercial  
Electrical Services  
Home Improvements and Repairs  
40-70 Business - Reliable  
and Bobcat for Hire  
LICENSED AND INSURED  
Free Estimates - Reliable  
Call JOHN LEWIS, today  
Ph: (606) 886-2785  
Pager: (606) 482-0229



**Legals**

**NOTICE OF INTENTION TO MINE**

**Pursuant to Application Number 836-5488, Renewal #1**

In accordance with KRS 250.05, notice is hereby given that Matt/Co, Inc., 439 Meadows Branch, Prestonsburg, Kentucky 41653 has applied for renewal of a permit for an underground coal mining operation located 3.92 miles east of Lancer in Floyd County. The proposed operation will disturb 25.84 surface acres and will underlie 524.46 acres, and the total area within the permit boundary will be 550.30 acres.

The proposed operation is approximately 2.94 miles east of State Route 3388's junction with State Route 3 and located 3.5 miles east of Brandy Keg Dike.

The proposed operation is located on the Lancer U.S.G.S. 7' fractional map. The surface area to be disturbed is owned by the Floyd Harris heirs. The operation will underlie and be owned by the Floyd Harris heirs, Bill Monroe Thompson Heirs, Clark Pergem and Jesse Ruddy, Holly Rose, Mike and Teresa Stratton, Evan and Mary Rose, John Hunt, Lewis and Emma Hunt, Mary Lucille Willis, Jewell Crider, Wayne and Barbara Wright, Donald L. and Joyce Coble, Lon Coble Estate, Rhonda Call Coble Call Coble Estate, Ransom Hunt, Bill M. Thompson and Steven Todd and Bonnie Harris.

The application has been filed for public inspection at the Department for Surface Mining Reclamation and Enforcement's Prestonsburg Regional Office, 3140 South Lake Drive, Suite 6, Prestonsburg, Kentucky 41653. Ten comments, objections, or requests for a permit conference must be filed with the Director, Division of Permits, #2 Hudson Hollow, U.S. 127 South, Frankfort, Kentucky 40601. This is the final advertisement of the application; all comments, objections or requests for a permit conference must be received within 30 days of this date.

**ANNOUNCEMENTS**

**SERVICES**

**Automotive**

1989 Beetle \$4,000.00 Call 889-4783.

**FINANCIAL**

**EDUCATION**

**ANIMALS**

**Horses**

**FOR SALE**

2 HORSES FOR SALE. CALL AFTER 7 P.M. 886-9894

**HORSE FOUND**

FOUND DARK BROWN HORSE NEAR HWY. 680 NEAR PARSONS BRANCH AT HAROLD, KY. CALL 859-293-0810

**AGRICULTURE**

**MERCHANDISE**

**Miscellaneous**

Diamond ring for sale 2.4 solitaire, 1 in clarity with papers. Appraised value \$200.00 asking 4,500 ring size 8 Call 886-6245 or 434-5047

**Yard Sale**

Yard sale behind the old drift school, a little bit of everything including clothing, dishes, etc. Friday November 4th thru Saturday November the 5th. From 9 a.m.-7

**Automotive**

2003 atv 4x4 yamaha Kodiak 450 for sale automatic digital readout locks, new tires like new only 726 miles. 25,000 firm. Call 886-6245 or 434-5047

**Want To Buy**

want to buy 14 X 70 mobile home or larger, McDowell area or close. Handover grandson. Call 606-377-6937 or 859-846-5095 or 859-533-1692

**Autos**

**HICKS AUTO SALES**  
**DAVID ROAD**  
2002 Dodge Dakota 4x4  
2006 Grand prix 79,000 miles  
2002 chevy tahoe z71 loaded  
98 dodge ram 4x4 quad cab  
2000 Buick Lesabre Limited  
1998 Chevy Tracker \$3,000  
1995 GMC Sierra 4wd extra cab  
1998 z12 s10  
1991 Ford F-150 / 100,000 miles  
\$2,200  
1999 Ford Explorer  
1998 Chevy Tracker \$3,000  
2003 Wide Glide H. D.  
12,000 miles \$9,000  
2003 SS Monte Carlo \$5,000  
2002 Toyota Rav 4 100,000 miles \$7,200  
1999 Ford Taurus \$ 2,900  
2003 ranger supercab  
2002 Sunfire 4 door  
Auto \$3,300  
2006 Chevy Silverado crew cab \$9,800  
CALL 606-886-2842.

**REAL ESTATE SALES**

**Cemetery Plots**

2 side by side Cemetery plots located in section 1 of Davidson Memorial Gardens at 1,600 for both. Call (937) 426-6050

**FOR SALE BY OWNER**

**REDUCED!!!!**  
**HOUSE AND LAND**  
**FOR SALE LOCATED**  
**AT PRICE RT. 122**  
**ASKING \$25,000.00. 1**  
**+/- ACRE OF LAND.**  
**NO LAND CON-**  
**TRACTS. CALL**  
**606-889-0010 OR**  
**606-263-4268.**

**Houses For Sale**

2 br mobile home & lot with septic system @ Arkansas Creek. Call 285-4742

3br 2ba house for sale located in prestonsburg city limits. small one bedroom apartment in the property. 7/10 of an acre more or less. REDUCED!! 219,000 price negotiable. Call (606) 886-9762

House for sale Creek (McDowell) one mile up in Doty Creek. Must have references to rent No Pets. Call 285-9130

**Land / Acreage**

Land for sale-75 acres Floyd County-Lum DeRosier Branch (East of Pineville) Rt. # 23 south rt. # 1100. Mature Timber, 20 M level acres building lots, electric and water. 149,500 Call 606-325-2809 or 606-325-4430

**REAL ESTATE RENTALS**

**Apartment/Townhouses**

Furnished apartment for rent and one nice furnished trailer. Very Clean. Suitable for working people. No drugs. No pets. Near Prestonsburg J.W. Lake. Out of state workers welcome. Call 606-205-0215 or 606-886-3841.

1 Br apartments for rent, \$550 per month, duplex utilities. Call 886-6061 or 886-0450 after 5 pm.

1 bedroom efficiency Apt. for rent between Prestonsburg & Paintsville. Appliances & utilities furnished. \$525 per month. \$250 deposit. 606-791-6016

**PREMIER ELKHORN COAL COMPANY**, Myra, KY is now accepting applications for the following position(s):

**DRILL OPERATOR** Requires 2 years surface coal mining safety experience on a drill. Must be able to operate 2 of the following; backdump, loader, excavator, grader, or dozer. Foreman, MET, and EMT certifications are a plus.

**TECO Coal** offers excellent wages and benefits; a superb health care plan that includes medical, prescription, dental and vision coverage; paid sick, vacation, holidays, and life insurance; company paid retirement plan plus 401-K retirement savings plan with a company match, bonus plans, and short and long term disability benefits.

Applicants will be accepted at:

Kentucky Department for Employment services  
136 College Street  
Pikeville, KY 41601  
Premier Elkhorn Coal Company is an EOE

**Big Sandy Area Community Action Program** is seeking qualified candidates for an **Information Technology Manager**.

**Responsibilities include:**

- Manage Local/Wide Area Network, network infrastructure, servers, client workstations, telephony systems and help desk functions.
- Ensure a high level of customer service and satisfaction to staff for user levels general to Executive.
- Install and maintain cabling, switches, routers, firewalls, wireless access points and related devices.
- Recommend Information Technology projects to support Agency objectives.
- Interact with the different program areas to support and determine IT needs.

**Qualifications:**

- Bachelors Degree in Information Technology or Related Field
- Industry certifications, i.e. MCSE, A+, CCNA (or comparable) etc.
- Minimum 3 Years demonstrated experience in Information Technology areas and Network platforms
- Systems experience, including hands-on experience with Help Desk support and management of user accounts
- Practical knowledge of Microsoft Operating systems, MS Windows, Windows Server Desktop setup, optimization and troubleshooting.
- Valid driver's license and travel required.

Qualified applicants may submit resume to:  
**Big Sandy Area Community Action Program, ATTN: Human Resources Manager, 230 Court Street, Paintsville, KY 41240.**

Closing date for applications is Friday, November 11, 2011 at 4:30 p.m.

Big Sandy Area Community Action Program is one of a network of more than 1,000 Community Action organizations located across the United States committed to fighting poverty by empowering individuals. An equal opportunity employer.

**Apartment/Townhouses**

**FOR RENT**

1 BR APART W/ PROVIDED UTILITIES PAID W/ PROVIDED. NOT PETS, NO HUD. \$525.00 MONTH. \$200.00 DEPOSIT. CALL 285-0999

**Houses For Rent**

3 bedroom house in Allen for rent 650 per month plus deposit. Call 794-0222

2 BR HOUSE FOR RENT. CALL 874-9348 UNTIL 4:00 P.M. AFTER CALL 259-7027 UNTIL 9:00 P.M.

**FOR RENT**

HOUSE FOR RENT, LOCATED AT LANGLEY HILL APPROVED. MOBILE HOME FOR RENT LOCATED AT DAVID. CALL 606-285-9641.

For Rent House located in Printer Ky. Call 285-3980

For Rent Two bedroom DW-Mobile Home Central air & heat. Includes at & ref. You pay utilities-\$500 security deposit. References required. Allen area on small private lot. Accepting applications & will accept Home call 606-434-6767 after 100 p.m.

Modular Home for rent on Little Paint Crk. 3 bedroom, 2 bath, carpet, good condition. \$600.00 per month lease req. Call 886-3613 or 791-9942

**MANUFACTURED HOUSING**

**Rentals**

**MOBILE HOME FOR RENT**

2BR MOBILE HOME FOR RENT. LOCATED AT MARTIN. REFERENCES REQUIRED. CALL 285-3121

**Manufactured Homes**

For Sale 2005 Champion Mobile Home, 30x56, 3 bedrooms, 2 bath, including kitchen appliances. Located at 217 Stephens Branch, Martin. Call 315,000. Call 285-3958.

**Manufactured Homes**

For Sale 2005 Champion Mobile Home, 30x56, 3 bedrooms, 2 bath, including kitchen appliances. Located at 217 Stephens Branch, Martin, KY. \$35,000. Call 285-3958.

**RESORT PROPERTY**

**EMPLOYMENT**

**Help Wanted- General**

**Community connections**

Located at Ivel KY. is taking applications for persons to work with adults with intellectual disabilities. All shifts available. Background checks required. Apply in person. 606-874-1900

**HELP WANTED**

Full-time office clerk position available for satellite Networks (DISH) in Prestonsburg, KY. Must have computer skills, customer service experience. Requires light lifting, inventorying warehouse. Sales & office Maintenance. Must pass background & drug screen. If interested call Satellite Networks Office @ 606-862-1755 or 606-539-2525. speak with Thad or Nora from 10:00 am - 4 pm.

**Technical Trades**

Wanted Concrete Finishers Local contractor seeking experienced finishers must have at least 5yrs. experience and own hand tools. Call 606-886-8373 or 606-477-9307

**Help Wanted- General**

**Job Opening-Full Time Dental Assistant**

We are seeking a full-time dental assistant for our busy dental office. Top wages, health insurance, retirement plan, paid holidays, paid vacations. The successful applicant should have dental X-ray certification, past dental assisting experience and basic computer knowledge. Please send resume, recent photograph, list of references and desired hourly wage expectations to:

**DENTAL ASSISTANT**  
600 N Mayo Trail  
Ste 1  
Pikeville, KY 41601  
Or email to: [crd@yourdentalssmile.com](mailto:crd@yourdentalssmile.com)

**POSITION AVAILABLE**

**Home medical equipment Biller / Coder**

Must have experience in HCPC and ICD9 Coding and knowledge of home Medical Equipment.

Please mail resume to  
PO Box 231, Prestonsburg, KY 41653  
or  
Fax to 606-886-1506

**POSITION AVAILABLE**

**Home Medical Equipment Customer Service Representative**

Must have experience in ICD9 Coding and knowledge of home medical equipment.

Please mail resume to  
PO Box 231, Prestonsburg, KY 41653  
or  
Fax to 606-886-8657

**NOW HIRING**

Established Auto Dealership is looking for

# ASE Service Technician

Competitive Pay • Excellent Benefits  
Mandatory Drug Test • Equal Opportunity Employer

Mail or e-mail resume information to:  
Pop's Chevrolet-Buick-Cadillac - Attn: Richard Dotson  
713 South Lake Drive • Prestonsburg, KY 41653  
[richarddotson@popschevy.com](mailto:richarddotson@popschevy.com)  
or stop by and ask for Richard Dotson or Michael Hunt

**PRESTONSBURG HOUSING AUTHORITY**

is accepting applications for the full time position of Maintenance Mechanic.

Applicants should have knowledge of plumbing and electrical, along with the ability to perform painting, carpentry, masonry and drywall work. Applicants should have considerable knowledge and experience of the principles and procedures used in maintenance of buildings and facilities, with knowledge of the principles and practices involved in the use and care of tools and equipment assigned and the hazards and safety precautions involved in maintenance and construction work. Applicant must be willing to participate in off-shift and weekend emergency maintenance coverage as scheduled, and must have a valid KY driver's license and be bondable. We offer a competitive benefits package that includes, medical, sick leave, paid vacation, paid holidays and retirement.

Applications will be taken at the Prestonsburg Housing Authority Office located at 12 Blaine Hall Street, in Prestonsburg, KY. Applications will be taken until the position is filled.

The Housing Authority of Prestonsburg is an Equal Opportunity Employer.

What to save

# \$1,000

a year on groceries?

1 800 428 8087

The Times

# ADVERTISE HERE

Call Ryan Hall  
606-886-8506

COMICS/ENTERTAINMENT

**BLONDIE**

Dean Young/Denis Lebrun



**BETLE BAILEY**

Mort Walker



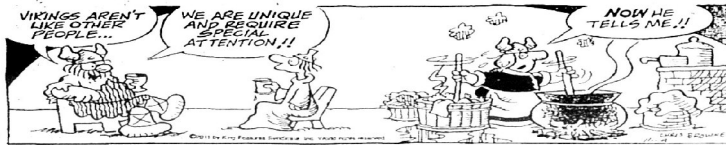
**FUNKY WINKERBEAN**

Tom Batiuk



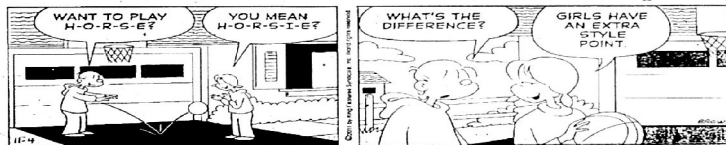
**HAGAR THE HORRIBLE**

Chris Browne



**HI & LOIS**

Brian and Greg Walker



**MUTTS**

Patrick McDonnell



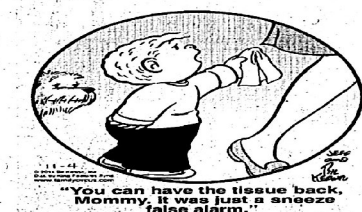
**ZITS**

Jerry Scott and Jim Borgman



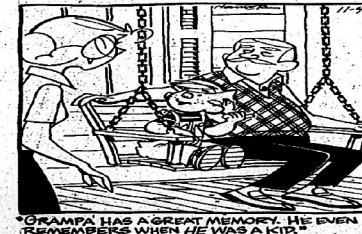
**THE FAMILY CIRCUS**

Bil Keane



**DENNIS THE MENACE**

Hank Ketchum



**CROSSWORD**

By THOMAS JOSEPH

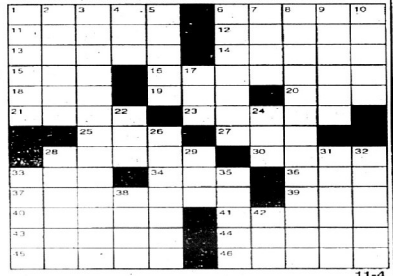
- ACROSS**
- 1 Borscht base
  - 6 Unstressed vowel
  - 11 Blown away
  - 12 Assertion
  - 13 Fiery crime
  - 14 Neigh sayer
  - 15 Tofu source
  - 16 Trampled
  - 18 Building wing
  - 19 Suffer
  - 20 Hoary
  - 21 Like a bearpole
  - 23 Mindless
  - 25 Down
  - 27 Stadium cry
  - 28 Scatter
  - 30 Start a hand
  - 33 Spot
  - 34 Move up and down
  - 36 Ignored a diet
  - 37 Stack component
  - 39 Retina part
  - 40 Rap sheet item
- DOWN**
- 1 Judicial no-nos
  - 2 Sign up
  - 3 Radio format
  - 4 Binary base
  - 5 Berger of film
  - 6 Learned sort
  - 7 Dimwit
  - 8 Saying "huh?," maybe
  - 9 In a sage manner
  - 10 Make better
  - 17 Free card
  - 22 Disfigure
  - 24 Passing craze
  - 7 Dimwit
  - 26 Cheapens
  - 42 Yew's yes
  - 28 Closed tight
  - 29 Stir-fry vessel
  - 31 Now
  - 32 Account book
  - 33 Black
  - 35 Fathered
  - 38 Beer buy
  - 42 Yew's yes



**Today's Answers**

1 Borscht base  
6 Unstressed vowel  
11 Blown away  
12 Assertion  
13 Fiery crime  
14 Neigh sayer  
15 Tofu source  
16 Trampled  
18 Building wing  
19 Suffer  
20 Hoary  
21 Like a bearpole  
23 Mindless  
25 Down  
27 Stadium cry  
28 Scatter  
30 Start a hand  
33 Spot  
34 Move up and down  
36 Ignored a diet  
37 Stack component  
39 Retina part  
40 Rap sheet item

**NEW CROSSWORD BOOK!** Send \$4.75 (check/m.o.) to Thomas Joseph Book 1, P.O. Box 328525, Orlando, FL 32852-0475



**THE LOCKHORNS**

William Hoest



**Jacqueline Bigar's HOROSCOPE**

**HAPPY BIRTHDAY** for Friday, Nov. 4, 2011: This year you develop a new mental thought process. Allow your creativity to flow, unlike you have in the past. Others come to you with many ideas and enjoy your ability to work with them. If you are single, you could meet someone quite spectacular. Be willing to flex and grow with this person. If you are attached, the two of you act like newlyweds. You could have a new addition to your family if you are at the right place in life. **PISCES** is the ultimate romantic. *The Stars Show the Kind of Day You'll Have: 5-Dynamic, 4-Positive, 3-Average, 2-So-so, 1-Difficult.*

**ARIES** (March 21-April 19) \*\*\* You simply know better than to get mixed up in a complex power play. Think "weekend" and stay away from control games. The best way to win is not to play. Renew your spirit and energy before you deal with this situation — maybe sometime next week! Tonight: Do your thing.

**TAURUS** (April 20-May 20) \*\*\*\* A friend goes out of his or her way to help you. Meetings prove to be a bonus; others are receptive and content. Detach and see others for their uniqueness. You might be lucky right now, but don't push it. Tonight: Follow the gang.

**GEMINI** (May 21-June 20) \*\*\* Your willingness to take the lead promotes a major change. You easily might go to excess. A partner could be more intense and transform. As determined as this person is, it might be a surprise when he or she changes his or her perspective. Tonight: A force to be dealt with.

**CANCER** (June 21-July 22) \*\*\*\* Reach out for another person, knowing full well your perspective could change once you talk. Good will and direct communication open up. Groups of people prove to be unusually fortunate. Accept an invitation to join friends after work. Tonight: Where there is music.

**LEO** (July 23-Aug. 22) \*\*\*\* You might be more inclined to work with others directly as you discover what you need. Your ability to adjust and transform makes you resilient. Know that you can handle a situation no matter what. Choose to observe and not butt heads with others. Tonight: Togetherness is the theme.

**VIRGO** (Aug. 23-Sept. 22) \*\*\*\* Others come forward with wonderful ideas. You might need to change plans in order to adapt to an offer or idea. Your flexibility counts right now. Others seek you out. Brush up on your diplomatic skills and ability to say "no." Opportunities come forward. Tonight: The only answer is yes.

**LIBRA** (Sept. 23-Oct. 22) \*\*\* Though no one expects others and people in general more than you, you opt to finish up your work. A changing situation on the home front could evolve into a different situation. One-on-one relating takes you in a new direction. Tonight: Togetherness is the theme.

**SCORPIO** (Oct. 23-Nov. 21) \*\*\*\* Your creativity adds lightness to intensity, making it easier for everyone to deal with some very strong feelings. Be careful about what you offer, as you might not be able to deliver. Opportunities stream your way. Tonight: Let the good times rock and roll.

**SAGITTARIUS** (Nov. 22-Dec. 21) \*\*\* Pressure builds. You have so much you would prefer to do at home. You also need to have more time to yourself. Your ability to verbalize and say what you think emerges. Stay centered with funds and spending. Tonight: Order in.

**CAPRICORN** (Dec. 22-Jan. 19) \*\*\*\* Keep communication flowing. Hold less in and be willing to discuss a problem. A lot will flow if you can let go of a situation. Your creativity is high; allow yourself to think outside the box. Others respond to your inquiries and ideas. Tonight: At your favorite hangout.

**AQUARIUS** (Jan. 20-Feb. 18) \*\*\* You have the ability to think through an idea or get to the bottom of a problem. Stay close to friends, as they seem to be caring and full of ideas. Revisit your opinions about key people. Once you drop some judgments, everything changes. Tonight: Your treat.

**PISCES** (Feb. 19-March 20) \*\*\*\* Put your best foot forward with someone you don't necessarily agree with. Know that you cannot always be on the same page, but you can respect your differences. Someone demonstrates unusual caring through a gesture. Don't focus on a controlling friend. Tonight: As you like it.

*Jacqueline Bigar is on the Internet at www.jacquelinebigar.com.*

**CONCEPTIS SUDOKU**  
by Dave Green

		4	3					
	5			9				
6		5			1			
4		5	2			7		
	2	9	3	4				
6		9	8			5		
	5		6		8			
	3			1				
		1	9					

Difficulty Level: \*\*\*\*

8	2	5	6	7	1	9	4	8
9	4	7	5	2	8	6	9	7
6	8	1	9	8	1	5	2	7
5	3	2	8	4	6	7	1	9
1	6	4	9	3	7	2	8	5
7	8	7	5	1	2	9	6	3
8	1	8	2	4	2	4	9	6
4	1	9	7	8	1	9	6	3
2	5	9	3	6	4	8	7	1



# DESKINS MOTORS

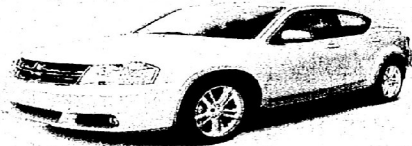


**NOVEMBER TO REMEMBER!**



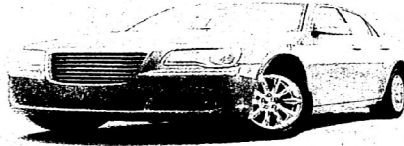
**BEFORE YOU BUY, GIVE DESKINS A TRY!**

**2011 Dodge Avenger**



**\$22,468**

**2011 Chrysler 300C**



**\$35,468**

**New 2011 Dodge Ram 2500**



**\$41,868**

**CHRYSLER CONQUEST!**

IF YOU OWN A FORD OR CHEVY, WE WILL GIVE YOU A \$1,000 REBATE TOWARDS A CHRYSLER AND YOU DON'T EVEN HAVE TO TRADE YOUR VEHICLE IN!



**BAD CREDIT? SLOW PAY? BAD LUCK? YOU'RE APPROVED!**

**0% FOR 72 MONTHS FINANCING AVAILABLE!**

**FAMILY VEHICLE? 4X4 SUV? THE OTHERS SAY NO? YOU'RE APPROVED!**

<p>2010 Dodge Dakota</p> <p>DESKINS DEALS \$23,968</p>	<p>2010 Hyundai Accent</p> <p>DESKINS DEALS \$13,968</p>	<p>2010 Dodge Calliber</p> <p>DESKINS DEALS \$17,968</p>	<p>2010 Hyundai Elantra</p> <p>DESKINS DEALS \$16,968</p>	<p>2008 Jeep Commander</p> <p>DESKINS DEALS \$15,968</p>	<p>2007 Nissan Quest</p> <p>DESKINS DEALS \$19,968</p>
<p>2010 Chevy Express</p> <p>DESKINS DEALS \$19,968</p>	<p>2010 Dodge Charger</p> <p>DESKINS DEALS \$17,968</p>	<p>2010 Chevy Traverse</p> <p>DESKINS DEALS \$23,968</p>	<p>2007 Chevy Trailblazer</p> <p>DESKINS DEALS \$14,649</p>	<p>2008 Toyota 4Runner</p> <p>DESKINS DEALS \$26,968</p>	<p>2011 Hyundai Sonata</p> <p>DESKINS DEALS \$17,968</p>
<p>2007 Jeep Grand Cherokee</p> <p>DESKINS DEALS \$18,968</p>	<p>2010 Toyota Corolla</p> <p>DESKINS DEALS \$16,968</p>	<p>2007 Dodge Durango</p> <p>DESKINS DEALS \$17,968</p>	<p>2008 Toyota Tacoma</p> <p>DESKINS DEALS \$20,968</p>	<p>2010 Dodge Journey</p> <p>DESKINS DEALS \$23,968</p>	<p>2011 Hyundai Elantra</p> <p>DESKINS DEALS \$18,968</p>



Learn How To Improve Your Credit  
 Understand how to read your credit report • Generate dispute letters to credit bureaus • Re-establish your credit!

Jean Deskins, General Sales Manager  
 Dan Eldridge & Tony Crum, Sales Managers  
 Tracy Deskins, Finance Manager

# DESKINS MOTORS

1-800-521-9065 • 1-606-437-1600  
 WWW.DESKINSMOTORS.COM

Jeep  
 HYUNDAI  
 LOCATED AT 200 DESKINS DRIVE • FAYETTEVILLE, KY  
 Call us about Special Financing for Bad Credit, Slow Credit, WE CAN HELP!

Disclaimer: Must finance with ALLY Financial to qualify for some rebates included in some prices. See dealer for details. Pictures are for model representation only. Not responsible for typographical errors.