

THIS REPRODUCTION IS COMPRISED  
OF THE BEST AND MOST COMPLETE  
SET OF ORIGINAL IMAGES AVAILABLE  
AT THE TIME OF THIS PROJECT'S  
INITIAL START. THE ORIGINAL PAPER,  
INK, FONT, FONT SIZE AND QUALITY  
OF THE MICROFILMED IMAGES  
CONTRIBUTE AND AFFECT THE  
QUALITY OF THE FINAL PRODUCT.

# Floyd County Times

A PROGRESSIVE PAPER FOR PROGRESSIVE PEOPLE

TENTH YEAR

NUMBER 15

Prestonsburg, Floyd County, Kentucky, Friday, October 25, 1935

## OFFICERS CHARGED IN THE KILLING OF MARTIN CONVICTED

Layne, and Castle Arraigned

## STEPHENS TO EDIT 'THE NEW ANTHUS'

James Stephens, son of Henry C. Stephens, Jr., Prestonsburg, was recently appointed editor of the new paper...

## JUDGE KING SWOPE ADDRESSES VOTERS

He Didn't Start Mud-Slinging, He Said

## MRS. FITZPATRICK IS KILLED IN LEAP

From Car At South Point, Ohio

## ARE HONORED ON 25TH WEDDING ANNIVERSARY

Mr. and Mrs. Roy E. were given a party...

## APPELLATE COURT AFFIRMS DECISION IN FLOOD CONTEST

Gives Mel Petty Democratic

## APPEAL EXPECTED

Policeman Layne and Deputy Sheriff Castle were convicted Wednesday...

## BETSY LAYNE FACULTY HONORED BY LADIES' AID

Betsy Layne, Ky., Oct. 22. The Betsy Layne school faculty was honored Friday evening...

## BELFRY DOWNED BY CATS, 18 TO 7

The Score, Blue 7, Local Record Last Year

## DEMOCRATIC RALLY, BARBECUE SATURDAY

Participants from all parts of county...

## NOVELIST, VISITOR HERE

Miss Lucy Furman, Hephysion, Ky., noted author...

## ORDER MADE TUESDAY

Judge Gattler's decision...

## SECOND TRIAL OF Betsy LAYNE

Wayland, policeman, and Deputy Sheriff Vern Cashe were under trial...

## INVITATIONS INCLUDED

Mr. and Mrs. B. E. Lewis, Mr. and Mrs. Harold...

## BELFRY DOWNED BY CATS, 18 TO 7

The Score, Blue 7, Local Record Last Year

## DEMOCRATIC RALLY, BARBECUE SATURDAY

Participants from all parts of county...

## NOVELIST, VISITOR HERE

Miss Lucy Furman, Hephysion, Ky., noted author...

## ORDER MADE TUESDAY

Judge Gattler's decision...

## THE OFFICERS CHARGED IN THE KILLING OF MARTIN CONVICTED

Layne, and Castle Arraigned

## STEPHENS TO EDIT 'THE NEW ANTHUS'

James Stephens, son of Henry C. Stephens, Jr., Prestonsburg...

## JUDGE KING SWOPE ADDRESSES VOTERS

He Didn't Start Mud-Slinging, He Said

## MRS. FITZPATRICK IS KILLED IN LEAP

From Car At South Point, Ohio

## ARE HONORED ON 25TH WEDDING ANNIVERSARY

Mr. and Mrs. Roy E. were given a party...

## APPELLATE COURT AFFIRMS DECISION IN FLOOD CONTEST

Gives Mel Petty Democratic

## FORM RED CROSS ROLL CALL PLANS

Drive for Funds Begins on Armistice Day, 1:20

## BETSY LAYNE FACULTY HONORED BY LADIES' AID

Betsy Layne, Ky., Oct. 22. The Betsy Layne school faculty...

## BELFRY DOWNED BY CATS, 18 TO 7

The Score, Blue 7, Local Record Last Year

## DEMOCRATIC RALLY, BARBECUE SATURDAY

Participants from all parts of county...

## NOVELIST, VISITOR HERE

Miss Lucy Furman, Hephysion, Ky., noted author...

## ORDER MADE TUESDAY

Judge Gattler's decision...

## FORM RED CROSS ROLL CALL PLANS

Drive for Funds Begins on Armistice Day, 1:20

## BETSY LAYNE FACULTY HONORED BY LADIES' AID

Betsy Layne, Ky., Oct. 22. The Betsy Layne school faculty...

## BELFRY DOWNED BY CATS, 18 TO 7

The Score, Blue 7, Local Record Last Year

## DEMOCRATIC RALLY, BARBECUE SATURDAY

Participants from all parts of county...

## NOVELIST, VISITOR HERE

Miss Lucy Furman, Hephysion, Ky., noted author...

## ORDER MADE TUESDAY

Judge Gattler's decision...

## FORM RED CROSS ROLL CALL PLANS

Drive for Funds Begins on Armistice Day, 1:20

## BETSY LAYNE FACULTY HONORED BY LADIES' AID

Betsy Layne, Ky., Oct. 22. The Betsy Layne school faculty...

## BELFRY DOWNED BY CATS, 18 TO 7

The Score, Blue 7, Local Record Last Year

## DEMOCRATIC RALLY, BARBECUE SATURDAY

Participants from all parts of county...

## NOVELIST, VISITOR HERE

Miss Lucy Furman, Hephysion, Ky., noted author...

## ORDER MADE TUESDAY

Judge Gattler's decision...

## FORM RED CROSS ROLL CALL PLANS

Drive for Funds Begins on Armistice Day, 1:20

## BETSY LAYNE FACULTY HONORED BY LADIES' AID

Betsy Layne, Ky., Oct. 22. The Betsy Layne school faculty...

## BELFRY DOWNED BY CATS, 18 TO 7

The Score, Blue 7, Local Record Last Year

## DEMOCRATIC RALLY, BARBECUE SATURDAY

Participants from all parts of county...

## NOVELIST, VISITOR HERE

Miss Lucy Furman, Hephysion, Ky., noted author...

## ORDER MADE TUESDAY

Judge Gattler's decision...

## FORM RED CROSS ROLL CALL PLANS

Drive for Funds Begins on Armistice Day, 1:20

## BETSY LAYNE FACULTY HONORED BY LADIES' AID

Betsy Layne, Ky., Oct. 22. The Betsy Layne school faculty...

## BELFRY DOWNED BY CATS, 18 TO 7

The Score, Blue 7, Local Record Last Year

## DEMOCRATIC RALLY, BARBECUE SATURDAY

Participants from all parts of county...

## NOVELIST, VISITOR HERE

Miss Lucy Furman, Hephysion, Ky., noted author...

## ORDER MADE TUESDAY

Judge Gattler's decision...

## FORM RED CROSS ROLL CALL PLANS

Drive for Funds Begins on Armistice Day, 1:20

## BETSY LAYNE FACULTY HONORED BY LADIES' AID

Betsy Layne, Ky., Oct. 22. The Betsy Layne school faculty...

## BELFRY DOWNED BY CATS, 18 TO 7

The Score, Blue 7, Local Record Last Year

## DEMOCRATIC RALLY, BARBECUE SATURDAY

Participants from all parts of county...

## NOVELIST, VISITOR HERE

Miss Lucy Furman, Hephysion, Ky., noted author...

## ORDER MADE TUESDAY

Judge Gattler's decision...

## FORM RED CROSS ROLL CALL PLANS

Drive for Funds Begins on Armistice Day, 1:20

## BETSY LAYNE FACULTY HONORED BY LADIES' AID

Betsy Layne, Ky., Oct. 22. The Betsy Layne school faculty...

## BELFRY DOWNED BY CATS, 18 TO 7

The Score, Blue 7, Local Record Last Year

## DEMOCRATIC RALLY, BARBECUE SATURDAY

Participants from all parts of county...

## NOVELIST, VISITOR HERE

Miss Lucy Furman, Hephysion, Ky., noted author...

## ORDER MADE TUESDAY

Judge Gattler's decision...

## FORM RED CROSS ROLL CALL PLANS

Drive for Funds Begins on Armistice Day, 1:20

## BETSY LAYNE FACULTY HONORED BY LADIES' AID

Betsy Layne, Ky., Oct. 22. The Betsy Layne school faculty...

## BELFRY DOWNED BY CATS, 18 TO 7

The Score, Blue 7, Local Record Last Year

## DEMOCRATIC RALLY, BARBECUE SATURDAY

Participants from all parts of county...

## NOVELIST, VISITOR HERE

Miss Lucy Furman, Hephysion, Ky., noted author...

## ORDER MADE TUESDAY

Judge Gattler's decision...

## FORM RED CROSS ROLL CALL PLANS

Drive for Funds Begins on Armistice Day, 1:20

## BETSY LAYNE FACULTY HONORED BY LADIES' AID

Betsy Layne, Ky., Oct. 22. The Betsy Layne school faculty...

## BELFRY DOWNED BY CATS, 18 TO 7

The Score, Blue 7, Local Record Last Year

## DEMOCRATIC RALLY, BARBECUE SATURDAY

Participants from all parts of county...

## NOVELIST, VISITOR HERE

Miss Lucy Furman, Hephysion, Ky., noted author...

## ORDER MADE TUESDAY

Judge Gattler's decision...

## FORM RED CROSS ROLL CALL PLANS

Drive for Funds Begins on Armistice Day, 1:20

## BETSY LAYNE FACULTY HONORED BY LADIES' AID

Betsy Layne, Ky., Oct. 22. The Betsy Layne school faculty...

## BELFRY DOWNED BY CATS, 18 TO 7

The Score, Blue 7, Local Record Last Year

## DEMOCRATIC RALLY, BARBECUE SATURDAY

Participants from all parts of county...

## NOVELIST, VISITOR HERE

Miss Lucy Furman, Hephysion, Ky., noted author...

## ORDER MADE TUESDAY

Judge Gattler's decision...

**CATS DOWN BELFRY**

Continued from page one

and converted for their total score of the day. The Prestonsburg came back with a bang and drove 70 yards without losing the ball.

touchdown. The try for extra points as well as those after the succeeding two touchdowns, failed.

In the second quarter from the Belfry 40 "Out" Archer broke through the tackle and sent Perry across the line for the most brilliant play of the contest. Prestonsburg concluded its series of victories in the third quarter.

and touchdowns for the time being.

The Blackcats' message is one of hope for the future. They are clearly outclassed by the team that last year finished as the best running attack in the state.

Here, yet the Cats were great in their play, looking great in sports and not so good in and out of them. Certain members of the team looked like their Denver, Colo., training table, if any, had Mrs. Mary Burnett Woods been laden with hot dogs and beer. Hook at center and Meardon at tackle were outstanding.

**JOHN M. GOBLE DIES**

Continued from page one

A brief funeral service was held at the Abbott residence with Rev. H. B. Hewes and Rev. J. W. Worthington officiating.

The body was taken to the funeral home and the service was held at the Third Baptist Church, Spokane, Wash.

Bible student and song leader. He was prominent in many of the activities of the church. Surviving are three daughters, Mrs. C. Y. Ashby, Mrs. C. E. Blinn, and Mrs. H. H. Hunt; a son, Mr. H. H. Hunt; and two sons, W. T. Goble and H. D. Goble.

He was born in Spokane, Wash., and was a member of the Spokane, Wash., church.

He was a member of the Spokane, Wash., church and was a member of the Spokane, Wash., church.

He was a member of the Spokane, Wash., church and was a member of the Spokane, Wash., church.

**BRING YOUR RADIO TROUBLES TO**  
**Koch's Radio Service**  
 (Pronounced Cook)  
 Six Years in Prestonsburg. Member Radio Manufacturers' Service. We Repair All Makes of Radios - Auto, Battery Or Electric.  
**PHONE 109 - LOCATED ON MAYO TRAIL**  
 Next To Greenwald's Service Station

**Unique Theatre**  
 PRESTONSBURG, KY.  
**PROGRAM**  
 WEEK OF OCTOBER 24 TO 30

**FRIDAY—**  
**"Baby Face Harrington"**  
 Featuring Charles Butterworth  
 Friday at 10 a. m.—"BIRTH OF A NATION"

**SATURDAY—**  
**"Heir To Trouble"**  
 With Ken Maynard SERIAL & COMEDY

**SUNDAY AND MONDAY—**  
**"ALIBI IKE"**  
 Starring Joe E. Brown NEWS & COMEDY

**TUESDAY AND WEDNESDAY—**  
**"Oil for the Lamps of China"**  
 With Josephine Hutchinson and Pat O'Brien—Comedy

**THURSDAY—**  
**"VAGABOND LADY"**  
 With Robert Young  
 Coming Sunday, Nov. 3—"Romance In Manhattan"

**Vaughan & Goble**  
**ELECTRIC WIRING PLUMBING**  
 Work done without delay and with the care that insures you against future trouble. Let us quote you on that next wiring or plumbing job.  
 Shop located in former City Hall Bldg., First Ave. Phone 231-W.  
**DOVE VAUGHAN** **J. Y. GOBLE**  
**PRESTONSBURG, KY.**

**Announcing the New**  
**1936 OLDSMOBILE**  
 at New Low Prices

NEW STYLE LEADER STYLING... SMOOTHER, LIVELIER POWER... INCREASED COMFORT... GREATER ECONOMY... NEWLY ENRICHED INTERIORS... AND ALL THE MODERN FINE CAR FEATURES THAT MAKE OLDSMOBILE "The car that has everything"

**A BIG NEW 90 H.P. SIX... A LUXURIOUS NEW 100 H.P. EIGHT**

**OLDSMOBILE today announces two beautiful new Style Leaders for 1936... a big powerful Six and a luxurious new Eight... both at new low prices... Powered with smoother, livelier engines—90 full horsepower in the Six, 100 horsepower in the Eight—and with newly enriched interiors and every fine-car feature—they confirm anew the unique distinction of Oldsmobile... "The Car that has everything" Come in, see and drive the new 1936, new 1936 Oldsmobile for 1936—none on display.**

**Roomy, Comfortable Interiors... More luxurious than ever... Fisher No Draft Ventilation admits fresh air without draft... and excludes rain.**

**Super-Systemic Braking... Big powerful and self-energizing, always equalized... completely sealed against weather. Gentle pressure on the brake pedal brings your car to a smooth, quick, straight-line stop.**

**Center-Control Steering and All-Shifts Shifting... Easy, effortless driving with all gear changes.**

**Easy-Action Wheels... "step over" pumps... combine with Ride Stabilizer to give Oldsmobile's gliding, wavelike ride.**

**A. C. CARTER PRESTONSBURG, KENTUCKY**

**BONUS FIGHT**  
 Continued from page one  
 The men who rendered war service were told to wait. We also know that despite an overwhelming public sentiment in favor of payment last winter, we were defeated in the halls of congress.  
 The speaker declared that the legion was pledged to uphold Americanism and American ideals and had outlined a child welfare program which would be carried through to conclusion and would work for world peace and favored a bill which would provide for adequate national defense, and for an universal draft act in case of war, which would mean that capital and industry would be drafted the same as manpower in order that none would be enriched at the expense of the other.  
**Rose Is Chairman**  
 The meeting here which brought together legionnaires from county states, and which was presided over by E. K. Rose, commander of Clarence Field Post No. 76, and State Department Commander James W. Hammonds, of Paintsville, was in honor of Congressman Fred M. Vinson, of Ashland, who sponsored the Vinson bonus bill in the last session of Congress.

**Medicated with ingredients of Vicks VapoRub**  
**VICKS COUGH DROP**

**"You don't have to be rich to enjoy rich whiskey!"**

**DEPEND ON IT— every bottle of my whiskey is the same!**

Yes, my friends, this old-timer is *always* going to try to give you a barrel of quality in every bottle! Taste the rich flavor of Old Quaker... you'll be glad to find that it doesn't take a barrel of money to buy it.

**OLD QUAKER**  
 BRAND STRAIGHT WHISKEY  
 As you prefer in BOURBON OR RYE It Bears the SCHENLEY MARK OF MERIT  
 also try OLD QUAKER APPLEJACK OLD QUAKER RUM OLD QUAKER BRANDY (8 years old) OLD QUAKER SILE OIN

FRIDAY, O  
**Floyd**  
 Paintsville, I  
 Ballard Hun  
 and Member  
 of Floyd Cou  
 Prestonsburg  
 Gentlemen:  
 Pursa  
 and records  
 1934, to Jun  
 the various  
 Fund, coveri  
 statements of  
 I four  
 Partic  
 Sched  
 and disburs  
 your inform  
 Sched  
 as to advisa  
 to be necess  
 receipts comm  
 Sched  
 the books of  
 Sched  
 issued by the  
 staff and the  
 Sched  
 the  
 Sched  
 you have any  
 Sched  
 roll's audit  
 formation.  
 Sched  
 by you. (Ear  
 monthly. (Ear  
 I was g  
 opportunit  
 I certifi  
 Sched  
 and a  
 the period n

Balance Shee  
 School Fund  
 Sched  
 Sched  
 Sched  
 Boston Confo  
 Drift, Conso  
 Dwaik Cong  
 Garret Con  
 Harold-Layn  
 Lackey Cen  
 McDowell C  
 Martin Com  
 Martin Sin  
 Maytown Co  
 Wayland Co  
 Wheelwright  
 Certification  
 Reconciliation  
 Recapitulation  
 Bonded Indel  
 Warrants Du  
 Accounts Rec  
 Overpaid Co  
 Interest Due

Assets:  
 Bank Balance  
 Sinking Fund  
 Buildings and  
 Accrued Exp  
 Teachers' Co  
 Maintenance  
 Transfer (At  
 Total Assets  
 Liabilities:  
 Accounts pay  
 Bonds Fundi  
 Bonds, Aukie  
 Bonds, Marti  
 Bonds, Whee  
 Warrants Ou  
 Excess of A  
 Total Liabili

Balance July  
 Receipts  
 State  
 Consulate  
 Delinquent  
 Loans  
 Other Receiv  
 Levies:  
 Real and Pe  
 Bank Shares  
 Corporations  
 Omitted List  
 Polls  
 Consolidation

# Floyd County Board of Education AUDIT REPORT

## From July 1, 1934 to June 30, 1935

Paintsville, Ky. Sept. 25, 1935

Ballard Hunter, Superintendent,  
and Members of the Board of Education  
of Floyd County, Kentucky,  
Prestonsburg, Kentucky

Gentlemen:  
Pursuant to your instructions, I have made a detailed audit of the books of account and records of the Board of Education, Floyd County, Kentucky, for the period July 1, 1934, to June 30, 1935, also made the settlement with the Sheriff for the taxes collected for the various Consolidated Districts and submit herewith, Balance Sheet, Statement of School Fund, covering all your receipts and disbursements, except the Sinking Funds, detailed statements of each Consolidated District and the necessary supporting schedules.

I found your records well kept and expenditures all allowed by your board. Particular attention is called to the following Schedules:  
Schedule B (School Fund) This Schedule includes all of the receipts and disbursements. The detailed statements of the Consolidated Districts are set out for your information and are not additional receipts and disbursements.

Schedule Q (Reconciliation of Bank Balances) While there might be some question as to advisability of carrying the Bank Balance at the close of the Fiscal Year, it appears to be necessary to take care of the current expenses for the Rural Schools until your receipts commence.

Schedule R (Recapitulation of Indebtedness) This Schedule shows a net reduction of indebtedness for the Fiscal Year of \$36,504.93 after eliminating all Bank Balances. I believe this speaks for itself without any further comment.

Schedule S (Warrants outstanding) Includes one warrant, duplicate of Number 340, issued by the preceding administration; this warrant is for \$656.70, payable to F. A. Magyard and there was no stub or record of same.

Schedule T (Accounts payable) Amounts taken from your books and include accrued teachers pay rolls.

Schedule V (Overpaid commission on Consolidated districts) Section 4425-2 Carroll's statute only allow the Sheriff 1 per cent. This excess commission is noted for your information.

Schedule W (Interest on average monthly balances). Under an order entered by your Board on July 2, 1934, your depositary was required to pay 2 per cent on average monthly balances. This amounts to \$632.12 and has not been paid.

I was given every assistance possible by your Superintendent and his helpers and take this opportunity to thank them.

I certify that in my opinion, subject to the comments above, the accompanying Balance Sheet and supporting Schedules, reflect the financial transactions of the Board for the period mentioned in the condition of the various funds as of June 30, 1935.

ALFRED D. ROBERTS,  
Public Accountant.

### INDEX

Balance Sheet	Schedule A
School Fund, Year 1934-1935	Schedule B
Assets	Schedule C
Liabilities	Schedule D
Recapitulation of Indebtedness	Schedule E
Warrants Outstanding	Schedule F
Overpaid Commission	Schedule G
Interest Due on Monthly Balances	Schedule H
Receipts	Schedule I
Disbursements	Schedule J
Balance per Bank Statement	Schedule K
Commission on Collections at 3 per cent	Schedule L
Interest at 2 per cent on average monthly bal.	Schedule M
Uncollected Tickets	Schedule N
Disbursements	Schedule O
Balance per Bank Statement	Schedule P
Commission on Collections at 3 per cent	Schedule Q
Interest at 2 per cent on average monthly bal.	Schedule R
Uncollected Tickets	Schedule S
Disbursements	Schedule T
Balance per Bank Statement	Schedule U
Commission on Collections at 3 per cent	Schedule V
Interest at 2 per cent on average monthly bal.	Schedule W
Uncollected Tickets	Schedule X
Disbursements	Schedule Y
Balance per Bank Statement	Schedule Z

### Floyd County, Kentucky BALANCE SHEET BOARD OF EDUCATION June 30, 1935

<b>Assets:</b>			
Bank Balance	\$	48,088.03	
Sinking Fund balances		340.00	
Buildings and Equipment		589,781.64	
<b>Accrued Expenses:</b>			
Teachers' Salaries	\$7,488.00		
Maintenance and Operation	3,138.90		
Transfer (Auxiliary)	2,000.00	13,074.90	
Total Assets		\$651,284.57	
<b>Liabilities:</b>			
Accounts payable	\$1,182.22		
Bonds Funding	1,000.00		
Bonds, Auxiliary Consolidated	12,000.00		
Bonds, Martin Consolidated	13,000.00		
Bonds, Wheelwright Consolidated	51,435.35		
Warrants Outstanding	467,166.78		
Excess of Assets over Liabilities		\$651,284.57	

### SCHEDULE A

### Floyd County, Kentucky STATEMENT OF SCHOOL FUND From July 1, 1934 to June 30, 1935

Balance July 1, 1934	9,289.93
<b>Receipts:</b>	
State	153,068.76
Consolidated Districts	33,378.93
Delinquent Taxes	822.50
Loans	9,000.00
Other Receipts	3,418.25
<b>Less:</b>	
Real and Personal Property	6,525,236.00
Bank Shares	16,978.00
Corporations	14,136,739.00
Omitted List	26,985.00
Polls	7,224.00
Consolidation Coal Co.	183.45

State Revenue Agent	20.74	110,890.92
<b>Credits:</b>		
Exonerations	92,876.00	46,943.40
Exonerations, Bank Shares	16,978.00	67.88
Delinquents	50	277.20
Duplicate Assessments	143,315.00	716.59
Land Sales	379,835.00	1,899.19
Polls		4,334.00
Discount Allowed		136.99
		8,141.63
<b>Deductions:</b>		
Commission	1,927.32	101,721.97
Forward		316,598.74

### Floyd County, Kentucky STATEMENT OF SCHOOL FUND From July 1, 1934 to June 30, 1935

Forward	316,598.74
<b>Disbursements:</b>	
General Control	
Salaries	6,240.00
Overhead	3,324.13
Teachers' Salaries	204,460.64
Other Instruction Expense	3,396.33
Operation	8,625.93
Maintenance	1,559.74
Auxiliary Agencies	2,859.76
Fixed Charges	2,493.23
Capital Outlay	10,389.91
Loans Repaid	9,000.00
Funding Bonds Paid	4,000.00
Wheelwright Con. Dist. Bonds	1,000.00
Interest and Charges	9,645.99
Transfer to Sinking Fund	1,600.00
Balance June 30, 1935	268,510.71
	48,088.03

### SCHEDULE B-2

### Floyd County, Kentucky STATEMENT OF AUXILIARY SINKING FUND From July 1, 1934 to June 30, 1935

<b>Receipts:</b>	
Transfers from Auxil. Con. School Fund	600.00
<b>Disbursements:</b>	
Magnus and Co. (Interest on bonds)	540.00
Balance June 30, 1935	60.00
Balance per Bank Statement	60.00

### SCHEDULE C-1

### Floyd County, Kentucky STATEMENT OF AUXILIARY CONSOLIDATED SCHOOL FUND From July 1, 1934 to June 30, 1935

Balance July 1, 1934	600.11
<b>Receipts:</b>	
Real and Personal Taxes - Rate .75	842.95
Ky. and West Va. Power Co.	95.73
W. H. Lister Co.	1,984.14
W. H. Lister Co. (Gas Company)	2.31
W. H. Lister Co. (Gas Company)	3.32
Uncollected Tickets	2,931.75
Commission 3 per cent	166.92
Duplicate (Overpayment)	81.54
Disbursements:	
Charit Patton	8.00
Vannoy Lumber Company	67.29
Frederick Publishing Company	4.50
A. B. ...	12.35
Lige ...	4.00
Morris ...	17.10
W. H. ...	52.00
John ...	315.00
S. ...	100.19
L. J. ...	6.80
A. ...	76.50
Standard Oil Company	36.00
A. J. ...	9.18
Charit Patton	273.61
W. A. ...	5.00
C. C. ...	14.00
Frank ...	399.00
Crayon ...	70.00
McMillen Company	3.18
Book Supply Company	65.94
North-East Coal Company	18.52
Transfer to Sinking Fund	265.13
Balance June 30, 1935	600.00
Balance per Bank Statement	600.00
Commission on Collections at 3 per cent	18.35
Interest at 2 per cent on average monthly bal.	603.64

### SCHEDULE C-2

### Floyd County, Kentucky STATEMENT OF BETSY LAINE CONSOLIDATED SCHOOL FUND From July 1, 1934 to June 30, 1935

Balance July 1, 1934	1,000.00
<b>Receipts:</b>	
Real and Personal Taxes - Rate .75	1,074.66
Ky. and West Va. Power Co.	1,554.07
Southern Telephone Company	70.00
Ky. and West Va. Power Co.	639.89
Land Grant Corporation	411.22
Ky. and West Va. Gas Company	27.00
<b>Disbursements:</b>	
Uncollected Tickets	2,200.00
Commission 3 per cent	167.44
Disbursements:	
Westlake Service Company	4.18
Rosemary Ellington	102.83
Ky. and West Virginia Power Company	173.45
W. H. Lister	90.67
Harter Publishing Company	2.55
W. H. Stratton	21.00
Prestonsburg Publishing Company	26.90

(Continued on page four)

BOARD OF EDUCATION AUDIT  
(Continued from page three)

Table with columns for names and amounts. Includes entries for A. B. Meade, L. D. Hunter, Joe Caldwell, etc. Total amount: 1,362.03.

SCHEDULE D

Floyd County, Kentucky  
STATEMENT OF BOSCO CONSOLIDATED SCHOOL FUND  
From July 1, 1934 to June 30, 1935

Table with columns for receipts and disbursements. Includes entries for Real and Personal Tickets, Southern Bell Telephone Company, etc. Total receipts: 1,034.54.

SCHEDULE E

Floyd County, Kentucky  
STATEMENT OF DRIFT CONSOLIDATED SCHOOL FUND  
From July 1, 1934 to June 30, 1935

Table with columns for receipts and disbursements. Includes entries for Real and Personal Tickets, Warfield Natural Gas Company, etc. Total receipts: 1,998.41.

SCHEDULE F

Floyd County, Kentucky  
STATEMENT OF DWALE CONSOLIDATED SCHOOL FUND  
From July 1, 1934 to June 30, 1935

Table with columns for receipts and disbursements. Includes entries for Real and Personal Tickets, Southern Bell Telephone Company, etc. Total receipts: 1,076.30.

Table with columns for Commission 3 per cent, Disbursements, and Receipts. Includes entries for A. B. Meade, Prestonsburg Publishing Company, etc. Total disbursements: 1,209.91.

SCHEDULE G

Floyd County, Kentucky  
STATEMENT OF GARRETT CONSOLIDATED SCHOOL FUND  
From July 1, 1934 to June 30, 1935

Table with columns for receipts and disbursements. Includes entries for Real and Personal Tickets, Southern Bell Telephone Company, etc. Total receipts: 1,902.71.

SCHEDULE H

Floyd County, Kentucky  
STATEMENT OF HAROLD-LAYNESVILLE CONSOLIDATED SCHOOL FUND  
From July 1, 1934 to June 30, 1935

Table with columns for receipts and disbursements. Includes entries for Real and Personal Tickets, Warfield Natural Gas Company, etc. Total receipts: 2,429.85.

SCHEDULE I

Floyd County, Kentucky  
STATEMENT OF LACKEY CONSOLIDATED SCHOOL FUND  
From July 1, 1934 to June 30, 1935

Table with columns for receipts and disbursements. Includes entries for Real and Personal Tickets, Southern Bell Telephone Company, etc. Total receipts: 1,076.30.

(Continued on page five)

Too Much Warm Retards Ray...

Fall buying in trade suffered a setback throughout part of the country... Radios and other goods lead in what...

Apartment of grade in demand, increasing; hotel section farms sell increased prices...

FOR HAIR AND JAPANESE... The Aniline Seal... United States

It sounds like as far as auto... Cheap rates... When you in... you obtain e... our policy f... United States

YOU Admit... THE... It gives all the... The Christian... United States

Too Much Warm Weather Retards Buying This Fall

Fall buying in the retail trade suffered a material setback throughout the greater part of the country during the past week as the result of the warm, unseasonable weather and the holiday interruption.

Department of Commerce reports from 33 key cities just received by its Louisville district office indicated.

For the most part, however, retail sales continued at safe margins above the same week last year.

Wholesale lines were only slightly affected by adverse weather and the holiday interruption, while reports from industrial centers gave evidence of the continuation of moderate expansion and of increased employment.

Louisville reported Men's and women's wearing apparel are leading retail commodity sales, which are maintaining consistent increase over year ago, in spite of advancing prices.

Radios and other electrical goods lead in wholesale movements, which are maintaining gain of around 10 per cent over same period year ago.

Eight hundred and twenty-four placed in positions past week by National Reemployment Service, a rate of 11.23 over preceding week.

Overall factory at Elizabethtown, Ky., resumed operations this week after having been closed for month, 150 employees being at work.

Louisville bank clearings recorded 18 per cent increase past week over same week a year ago.

Late potatoes are somewhat damaged by early frost. The ground is too dry for plowing with paid badly, needed over entire district.

Tobacco about all cut and maturing nicely in barns. Early sowings of barley and wheat need moisture badly.

Apartments of medium grade in demand, with rentals increasing, but rates increasing in Louisville.

Blue Grass section farms selling at much increased prices; in some cases 100 per cent over offerings couple of years ago.

Belle of Anderson distillery to spend \$80,000 remodeling Daniel Boone Lodge at Camp Nelson, Ky., bought this week for \$15,000.

Distilling equipment to be installed and operations begin about Feb. 15. Contracts let for \$16,895 held.

Internal Revenue collections in Kentucky in September of \$400,000 greater than in August.

W. A. Gaines and Company distillers, chartered in Kentucky with \$600,000 capitalization.

Bourbon Stockyards, Louisville, reports September business best in history of company.

Oil and gas leases for sale at the Times office.

... but, after all is said and done, it's the cigarette itself that counts ... the question is, does it suit you?



Now, when it comes to a cigarette that will suit you... you want to think whether it's mild, you want to think about the taste

That Chesterfields are milder and taste better is no accident.

The farmer who grows the tobacco, the warehouseman who sells it at auction to the highest bidder, every man who knows about leaf tobacco will tell you that it takes mild, ripe tobacco to make a good cigarette.

In making Chesterfields we use mild ripe home-grown and Turkish tobaccos.



Outstanding for mildness for better taste

© 1935, LORRY & MEYER TOBACCO CO.

FOR HAIR AND SCALP JAPANESE OIL The Antiseptic Scalp Medication Without Harsh Detergents

The less you pay, the more it may cost. It sounds like a contradiction, but it's a fact as far as automobile insurance is concerned.

YOUR HOME IS YOUR CASTLE Admit only clean, constructive news by reading THE CHRISTIAN SCIENCE MONITOR

Start Your Child in Music—Write the Kenney Music Company, 319 Ninth Street, Huntington, W. Va., for Special Low Prices and Easy Terms on New and Used Pianos.

WANTED: Representative for International Correspondence Schools, Age 21 to 30, Preferably with automobile, for Ohio, Indiana and Kentucky. Write S. H. Bemenderfer, Box 808, Muncie, Ind. 10-4-4

COMMONWEALTH PAYS DEATH CLAIM OF \$1,000 Commonwealth Life Ins. Co., Louisville, Ky.

Received through your agent, H. F. Patton, settlement in full on policy No. 76161, for \$1,000, on the life of Hattie G. Gaskins.

TANDY GEARHEART, Guardian

PIANOS Exhibited on Oct. 1. Baby Grand, save \$155. Write the Kenney Music Company, 319 Ninth Street, Huntington, W. Va. 10-18-4

NOTICE IN BANKRUPTCY In the District Court of the United States for the Eastern District of Kentucky. In the matter of THOMAS MAY HEREFORD.

DOCTORS KNOW Mothers read this: I TO RELIEVE II TO CONSPIRATION

Why do people come home from a hospital with bowels working like a well-regulated watch? The answer is simple, and it's the answer to all your bowel worries if you will only realize it: many doctors and hospitals use a liquid laxative.

Bankrupt — In Bankruptcy To the creditors of Thomas May Hereford, of West Prestonsburg, Kentucky, County of Floyd and district aforesaid, a bankrupt.

Notice is hereby given that the hour of 1 o'clock in the afternoon, at which time the said JOE HOBSON, Referee in Bankruptcy,

their claims, appoint a trustee, examine the bankrupt and meeting of his creditors will transact such other business as may properly come before said Referee in Bankruptcy, Prestonsburg, Kentucky, on October 30, 1935, at Prestonsburg, Kentucky, this 16 day of October, 1935.

TO THE VOTERS OF FLOYD COUNTY.

I am an Independent candidate for election to the Floyd County Board of Education, to be voted for on November 5, 1935.

Numerous friends and those interested in school welfare have asked me to make statements in regard to whom or what man I am for for the Superintendent.

Concerning these statements, I am here giving some of the questions asked me, together with my answers.

1. What man are you for for Superintendent of Schools? I am interested, first, in the children of Floyd county and not in the money some man may get for acting as superintendent.

2. Are you against "Hunter or Hunter"? Yes, I am not in favor of throwing any one out of office for political reasons. The only reason for such action on my part would be in the event that the official in question had broken the laws of Kentucky.

3. When Hunter's term expires, are you in favor of Hail Hunter? Yes, I believe that the people of this county should elect a man who will stand for the best interests of the county.

4. This man that you must run for is a new term to me, for some certain man is not, but if it applies to the present office of politics and school administration I am entirely erroneous. In fact, I believe it is entirely erroneous. In fact, I believe it is entirely erroneous.

things have been accomplished in an admirable style. The term "Hunterism" is plainly a political colloquialism and shows that political jealousy is the main reason for making a night, I am for the best of our school system from politics instead of raising camped politics from the way grounds on which our children play.

5. Are you for or against Hunter before his term is out? I am not in favor of throwing any one out of office for political reasons. The only reason for such action on my part would be in the event that the official in question had broken the laws of Kentucky.

6. I believe in the government, should be as close as possible to the people; and for that reason I would, as a member of the Board of Education, be in favor of respecting the action and nomination of the district trustee.

7. This man that you must run for is a new term to me, for some certain man is not, but if it applies to the present office of politics and school administration I am entirely erroneous. In fact, I believe it is entirely erroneous.

8. I believe in the government, should be as close as possible to the people; and for that reason I would, as a member of the Board of Education, be in favor of respecting the action and nomination of the district trustee.

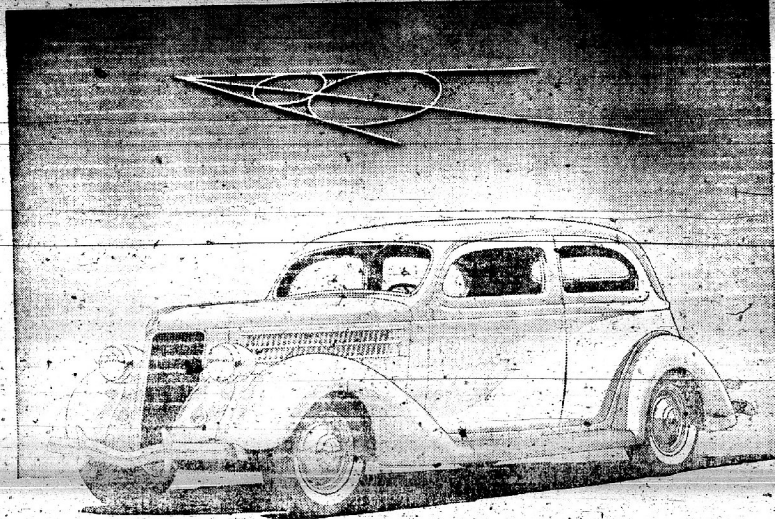
9. This man that you must run for is a new term to me, for some certain man is not, but if it applies to the present office of politics and school administration I am entirely erroneous. In fact, I believe it is entirely erroneous.

10. I believe in the government, should be as close as possible to the people; and for that reason I would, as a member of the Board of Education, be in favor of respecting the action and nomination of the district trustee.

ROMEYN C. DYER---and feel that you have given a vote to a man who will stand for the best interests of Floyd county and its children.

The Independent can---and should---win! I am in the race to the finish and will appreciate your loyal support.

Sincerely yours, ROMEYN C. DYER



# THE NEW FORD V-8 FOR 1936

Why do we say The New Ford V-8 for 1936?

What is new about it? Of course, the newest engine in the low-price car field is still the V-8 engine. Since Ford made it available to all car users (keeping it as economical as cars with lower cylinders) the Ford V-8 has been the newest engine on the market, and remains the newest for 1936.

You may buy a car on minor "talking points"—some specially advertised feature "with the car thrown in"—but after all, it is the engine you buy when you buy a car. Hence we put the engine first.

Other new points about the car make a long list.

Its lines are much more beautiful. The hood is longer and sweeps forward over the distinctive new radiator grille, giving the car a length and grace that are instantly impressive. The fenders are larger, with a wide flare. Horns are concealed behind circular grilles beneath the headlamps. New steel wheels.

Ford upholstery—always of sterling quality and excellent taste—is rich and enduring. The appointments of the car have a new touch of refinement. There

is no question about the increased beauty of the Ford V-8 for 1936.

In more practical matters, many improvements have been made—Steering is made easier by a new steering gear ratio. The cooling system circulates 3 1/4 gallons of water through a new, larger radiator. Natural thermostat action is assisted by two centrifugal water pumps. New style hood louvers permit a rapid air-flow around the engine.

Easier, quieter shifting of Ford gears—The gear shift lever now travels a shorter distance.

The two qualities you want in brakes—Brakes that stop the car with ease and certainty. Ford Super-Safety Brakes of the long-tested, fool-proof, mechanical design.

Safety—as always—in the electrically welded genuine steel body. Safety Glass all around at no extra cost. Hundreds have written grateful letters because this glass has protected the safety of their families.

A car you can drive without strain all day, if you like, in city or country. Steady, holds the road, responds to the

driver's touch like a well-trained horse. You don't have to "push" or "fight" the Ford V-8—driver and car easily get on terms of good understanding with each other.

An engine has much to do with the roominess of a car. Very much indeed. A long engine uses up car space. The compact V-8 engine permits much of the ordinary engine space to be used by passengers.

It really is a great car in every way. This 1936 Ford V-8—the finest, most dependable, Ford car ever built. Now on display by Ford dealers.

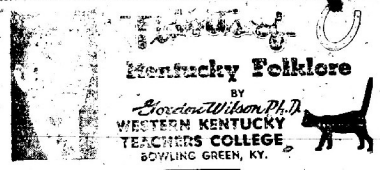
## LOW FORD V-8 PRICES

THIRTEEN BODY TYPES—Coupe (5 windows), \$510. Tudor Sedan, \$520. Fordor Sedan, \$580. DE LUXE—Roadster (with rumble seat), \$560. Coupe (3 windows), \$370. Coupe (5 windows), \$555. Phaeton, \$590. Tudor Sedan, \$565. Cabriolet (with rumble seat), \$625. Fordor Sedan, \$625. Tudor Touring Sedan (with built-in trunk), \$590. Fordor Touring Sedan (with built-in trunk), \$650. Convertible Sedan, \$760.

F. O. B. Detroit. Standard equipment, including bumper and spare tire, extra. All Ford V-8 body types have Safety Glass throughout at an additional cost. Economical terms through Universal Credit Company.

## NOW ON DISPLAY AT HOWARD MOTOR COMPANY

Phone 151 Prestonsburg, Ky.



**\*BREAKDOWNS** used that it is now impossible for us to follow the plot or plot. Sometimes there are three or four stanzas in succession that relate to similar things and suggest a sort of connected story. In many sections of the State "The Girl I Left Behind Me" has become a play-party song, chiefly devoted to directions for the dance. In other places it is a species of popular ballad. In a few places I have heard breakdowns that told stories in true ballad fashion and were used for the words in a "play party." Most song breakdowns do not tell a connected story; if they ever did, they have become so gar-

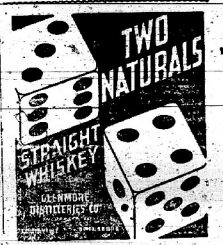
there will be sung to the same tune, stanzas ranging from the most picturesque to the most conventional way. Both serious, from emotions that are cultured to those that are most barbaric. The old breakdown ballad recently revived, and made a song hit. "Taint Gwine no more to no more" illustrates this tendency of breakdowns to ballads to sing of everything, good and bad, respectable and shady. As a child I heard it every hearing adding some new element from an adjoining neighborhood or some new twist stanza. Since the song has been revived, the same thing is true of it; everybody who sings it is tempted to add a stanza or two. Some of these are too obscene or inane to keep, but many are in accord with the original, so far as a popular ballad of any kind can be said to have an original. If one could live for a few centuries, I wonder how many times "Taint Gwine no more" like Sir Roger de Coverley's coat, would be in or out of style.

One can hardly think of a breakdown ballad without its ton figure in them, though in a conventional way. Both serious-in-law, that great source of jokes, come in for their share of notice. The ballad poet seems to have been quite a gallant in his day, to judge by his frequent references to "purity little girls," twinkling eyes and similar things. Women are very often the victim of gags in the breakdowns, especially because of their inability to talk and to spread news. The song breakdown is a sort of clearing-house for the poetry of the people, giving them a change to take a verse at what seems laughable in our common humanity. Song breakdowns are, after all, not the most typical ones. The singing of the words might interfere too much with the calling of the figures of the dance, and besides, it takes too much breath to dance and sing at the same time, provided one wants to "Dance all night till the broad daylight;

Go home with the girls in the "Turkey in the Straw" is the prince of sung breakdowns so "Arkansaw Traveller" is the prince of instrumental ones. It is hard to think of "Arkansaw Traveller" without a fiddle, just as "Turkey in the Straw" suggests the banjo, or banjo and fiddle. The instrumental breakdowns are numerous, but my own favorites are the following: "Soldier's Joy," "Arkansaw Traveller," "Pop Goes the Weasel," and "Little Black Dog With a Green Toe-Nail." In true folk fashion nearly every neighborhood has its own variation in the air of these breakdowns. Every fiddler or banjo-wicker adds the stamp of his personality. That is as it should be, for whatever is of the flock belongs to every individual of the race.

**10 Schools Participate in Copperas Lick Fair**  
C. E. Napier's school at Copperas Lick was the scene of a school fair Oct. 18 in which 10 schools were represented and which was attended by several hundred patrons of the various schools. Old-fashioned "round-town" games, quilt exhibits, prettiest baby contest, naming of counties, doll contests, music com-

petition and other features made the occasion highly enjoyable. W. H. Dingus, Ballard Hunter, Town Hall and Wayne Raliff were among the visitors who addressed the crowd. Dinner was served on the school grounds by the women of the community.



**At the first SNIFFLE..**  
Quick—the unique aid for preventing colds. Especially designed for nose and upper throat, where most colds start.  
**VICK'S V-60**  
3oz double quantity 50c.

**Special for This Month**  
Lady's or Gents  
**YELLOW GOLD WRIST ELGIN**  
For \$18.75  
Also fine watch repairing at reasonable prices.  
**DAN HEFNER**  
PRESTONSBURG, KY.

**E. P. ARNOLD**  
Funeral Director  
FRANKLIN W. MOORE  
Undertaker and Embalmer, Assistant  
ANY HOUR, DAY OR NIGHT, WE STAND READY TO SERVE YOU, EFFICIENTLY AND REASONABLY, IN THE CARE OF YOUR LOVED ONES.  
Ambulance Service Phone 94-W and 94-J, Prestonsburg, Ky.

*Do you know the Difference between a Person to Person call and a Station to Station call?*  
The first important difference is in the cost. Station-to-Station service is approximately one-fourth to two-thirds cheaper than Person-to-Person service.  
Another difference is that the rates for Station-to-Station service are about fifty per cent less on most calls during the night rate period than during the day, while the rates for Person-to-Person service are the same at all hours, day or night.  
A Person-to-Person call is one where you ask to be connected with a particular person at a distant telephone. A Station-to-Station call is one where you ask to be connected with a distant telephone, but do not specify that a particular person be reached at the distant telephone.  
On a Station-to-Station call, the connection is completed and timing of the call being when anyone answers the distant telephone. But a Person-to-Person call is not complete until the telephone company gets the particular person you want to the distant telephone.  
To make a Station-to-Station call, just tell the long distance operator that you want to talk to John Doe's residence or place of business, giving the telephone number or address if you know it, and to make sure, tell the operator you want Station-to-Station service.  
To make a Person-to-Person call, just tell the long distance operator you want to talk with John W. Smith, giving his location and telephone number if you know it.  
For rates and other information on long distance telephone service, look in the front of the telephone directory.  
**Southern Bell Telephone and Telegraph Co.**  
(1-2-3-4-5-6-7-8-9-0)

FRIDAY, OCTOBER 24, 1936  
Ky. and West V. Railway Express  
Uncollected Ticket Commission 3 per cent  
Disbursements: Mackey Gas Com. Ky. and West V. A. B. Meade Jack Patton Prestonsburg Pub. M. C. Sexton Garrett Lumber Co. Sandy Valley Har. James Collins W. T. Hatcher Standard Oil Cor. Snodgrass Insura. Monroe Wicker Henry Porter Ballitt Book Com. J. K. McCubbin Homer W. Jones Rex Hayes O. H. Stumbo Crockett Watson Due from Sheriff Balance June 30; Balance per Bank Commission on C. Interest at 2 per cent  
Disbursements: Warfield Natural Ky. and West V. C. and O. Railway Ky. and W. Va. C. Uncollected Ticket Commission 3 per cent  
Disbursements: Ky. and West V. Warfield Natural Eugene Allen Prestonsburg Pub. Lewis Martin Sign and Compa. Gell Supply Co. M. Welch M. Anderson, Gil. Cole Crisp Joseph E. Moore Wiley J. Jones W. A. Roles Wiley J. Jones A. F. Meade Inter-4 Bank Ky. Due from Sheriff Balance June 30; Balance per Bank Paid out of Gen. Balance per Book  
Receipts: Transfer from M. Disbursements: Magnus and Com. Due General Fun. Balance June 30; Balance per Bank Paid out of Gen. Balance per Book  
Receipts: Magna and Com. Due General Fun. Balance June 30; Balance per Bank Paid out of Gen. Balance per Book  
Disbursements: Magna and Com. Martin Gas Com. Eugene Allen James Crisp Prestonsburg Pub. Ott Frazier Earl Lynch Oliver Elam H. H. Vincent Chad Condon J. B. Click George Click Norris Click Morell Supply C.

Table with financial data for Floyd County, Kentucky, including items like 'Ky. and West Va. Gas Company', 'Uncollected Tickets', and 'Disbursements'.

STATEMENT OF McDOWELL CONSOLIDATED SCHOOL FUND. Table with financial data for the school fund, including receipts and disbursements.

STATEMENT OF MARTIN SINKING FUND. Table with financial data for the sinking fund, including receipts and disbursements.

STATEMENT OF MARTIN CONSOLIDATED SCHOOL FUND. Table with financial data for the consolidated school fund, including receipts and disbursements.

Table with financial data for various companies and agencies, including 'Sandy Valley Hardware Company', 'Snodgrass Insurance Agency', and 'Dixie Chemical Company'.

STATEMENT OF MAYTOWN CONSOLIDATED SCHOOL FUND. Table with financial data for the Maytown school fund, including receipts and disbursements.

STATEMENT OF MAYTOWN CONSOLIDATED SCHOOL FUND. Table with financial data for the Maytown school fund, including receipts and disbursements.

STATEMENT OF MAYTOWN CONSOLIDATED SCHOOL FUND. Table with financial data for the Maytown school fund, including receipts and disbursements.

STATEMENT OF WAYLAND CONSOLIDATED SCHOOL FUND. Table with financial data for the Wayland school fund, including receipts and disbursements.

Vertical text on the left margin containing various advertisements and notices.



Continued from page five)

Nellie Schellenger, old	67.05
George Pow	37.30
Interest to Bank Josephine No. 188	38.50
Elkhorn Coal Corp.	24.07
Due from Sheriff	71.25
Balance June 30, 1935	1,607.66
Balance per Bank Statement	1,632.32
Check Emmons-Hawkins Hdwe. Co. outstanding	6.39
Check Elkhorn Coal Corp. outstanding	24.07
Balance per Books	1,607.66
Commission on Collections at 2 per cent	50.97
Interest at 2 per cent on Average Monthly Bal.	520.02

SCHEDULE N

Floyd County, Kentucky  
STATEMENT OF WHEELWRIGHT CONSOLIDATED SCHOOL FUND  
From July 1, 1934 to June 30, 1935

Tax Payer:	
Balance July 1, 1934	22.26
Receipts:	
Real and Personal Taxes—Rate 1.00	2,246.96
Ky. and West Va. Power Co.	25.78
C. and O. Railway Company	783.83
Ky. and West Va. Gas Company	108.54
Railway Express Agency	.83
Uncollected Tickets	3,165.94
Commission 3 per cent	99.05
Due Sheriff (Ovtr payment)	92.01
Disbursements:	
A. B. Meade	2.68
Prestonsburg Publishing Company	22.50
James Weaver	358.88
Standard Oil Company	6.65
Frank Laughlin	167.75
T. H. Jones	90.00
Boon Hall	325.00
Mrs. V. C. Wilson	78.20
Interest Bank Josephine	9.83
Balance June 30, 1935	1,999.85
Balance per Bank Statement	1,999.85
Commission on Collections at 2 per cent	61.34
Interest at 2 per cent on Average Monthly Bal.	665.75

SCHEDULE O

Floyd County, Kentucky  
CERTIFICATION OF CORPORATIONS  
From July 1, 1934 to June 30, 1935

Ashland Transfer Company	1,516.00
American Tel. and Tel. Co.	12,378.00
American Railway Express Agency	2,127.00
C. and O. Railway Company	4,983,409.00
Inland Gas Corporation	847,818.00
Federal Public Corporation	1,060,803.00
Ky. and West Va. Power Company	1,060,803.00
Ky. Gas Transmission Co.	9,940.00
Ky. and West Va. Gas Company	4,452,179.00
Martin Gas Co.	15,000.00
Southern Bell Telephone Co.	43,884.00
Sparka Bros. Bus Line	8,807.00
Warfield Natural Gas Co.	2,687,907.00
Western Union Tel. Co.	9,127.00
Total	14,136,789.00

SCHEDULE P

Floyd County, Kentucky  
RECONCILIATION OF BANK BALANCES  
June 30, 1935

Balances per Bank Statements:	
General Fund	23,721.74
Teachers' Fund	8,009.92
Auxiliary	848.30
Betsy Laine	235.69
Bono	880.19
Drift	1,098.01
Dwale	319.76
Garrett	100.38
Harold-Laynesville	211.92
Lacey	552.22
McDowell	1,804.55
Martin	1,141.77
Maytown	5,807.92
Wayland	1,633.12
Wheelwright	1,999.85
First National Bank	4.00
Due from Martin Sinking Fund	360.00
Total	48,730.33
Checks Outstanding:	
No. 1548 1932 J. E. Hall Gen. Fund	11.50
No. 1550 1932 Joe Martin Gen. Fund	12.00
No. 1560 1932 C. S. Allen Gen. Fund	2.00
No. 1561 1932 Lackey Salisbury Gen. Fund	2.00
No. 1563 1932 Day Gearheart Gen. Fund	20.50
No. 1576 1932 Underwood Elliott Co. Gen. Fund	2.25
No. 1582 1932 Joe Reynolds Gen. Fund	1.40
No. 1588 1932 John Martin Gen. Fund	.95
No. 1591 1932 Inland Steel Co. Gen. Fund	32.50
No. 1592 1935 C. V. Watson Gen. Fund	55.50
No. 1593 1935 Ky. and West Va. Power Co. Gen. Fund	47.25
No. 1594 1935 R. S. Marshall Maytown	40.00
No. 1595 1935 Sodgrass Ins. Agency Maytown	12.50
No. 1596 1935 Sodgrass Ins. Agency Maytown	63.25
No. 1597 1935 Inland Steel Co. Wayland	25.75
No. 1598 1935 Inland Steel Co. Wayland	6.00
No. 1599 1935 Inland Steel Co. Wayland	66.40
No. 1600 1935 Inland Steel Co. Wayland	75.00
No. 1601 1935 Inland Steel Co. Wayland	111.00
No. 1602 1935 Inland Steel Co. Wayland	95.25
No. 1603 1935 Inland Steel Co. Wayland	1.00
No. 1604 1935 Inland Steel Co. Wayland	4.00
No. 1605 1935 Inland Steel Co. Wayland	4.00
Total	642.30
Total	45,088.03

SCHEDULE Q

Floyd County, Kentucky  
BOARD OF EDUCATION—RECAPITULATION OF INDEBTEDNESS  
Indebtedness July 1, 1934:

Accounts Payable	7,150.00
Warrants Outstanding	50,034.56
Bonds Outstanding	126,000.00
Bank Balance	183,184.62
Total	9,269.93

Net Indebtedness, July 1, 1934	173,294.69
Indebtedness Incurred Fiscal Year	221,005.80
Indebtedness Paid off Fiscal Year	394,900.45
Indebtedness Paid off Fiscal Year	259,510.71
Net Indebtedness June 30, 1935	113,889.78
Indebtedness June 30, 1935:	
Accounts Payable	11,852.22
Warrants Outstanding	51,485.59
Bonds	121,008.00
Bank Balance	183,817.81
Sinking Fund Balance	45,088.03
Net Indebtedness June 30, 1935	48,428.03
Reduction of Net Indebtedness	135,389.78
Total	38,564.91

SCHEDULE R

Floyd Co., Kentucky, Board of Education  
BONDED INDEBTEDNESS  
June 30, 1935

Bonds:		
14 to 17 inclusive	1936	
18 to 21 inclusive	1937	
22 to 25 inclusive	1938	
27 to 31 inclusive	1939	
32 to 37 inclusive	1940	
38 to 44 inclusive	1941	
45 to 51 inclusive	1942	
52 to 58 inclusive	1943	
59 to 66 inclusive	1944	
67 to 74 inclusive	1945	
75 to 82 inclusive	1946	
83 to 91 inclusive	1947	
92 to 100 inclusive	1948	
Total	37,000.00	
Bonds dated May 1, 1930, Interest 5 per cent		
Interest Payable May 1 and Nov. 1		
Interest and Principal Payable at Hanover Bank and Trust Co., New York City		
Auxiliary Consolidated School District		
Bonds 1 to 9 Inclusive Dated Jan. 1, 1926	9,000.00	
Bonds Due January 1, 1936, Interest 6 per cent, Payable Jan. 1 and July 1		
Payable at Fifth Third National Bank, Cincinnati, Ohio		
Martin Consolidated School District		
Bond No. 1 due July 1, 1935	1,000.00	
Bond No. 2 due July 1, 1936	1,000.00	
Bond No. 3 due July 1, 1937	1,000.00	
Bond No. 4 due July 1, 1938	1,000.00	
Bond No. 5 due July 1, 1939	1,000.00	
Bond No. 6 due July 1, 1940	1,000.00	
Bond No. 7 due July 1, 1941	1,000.00	
Bond No. 8 due July 1, 1942	1,000.00	
Bond No. 9 due July 1, 1943	1,000.00	
Bond No. 10 due July 1, 1944	1,000.00	
Bond No. 11 due July 1, 1945	1,000.00	
Bond No. 12 due July 1, 1946	1,000.00	
Total	12,000.00	
Dated July 1, 1929, Interest 6 per cent, Payable July 1 and Jan. 1		
Payable at Fifth Third Union Trust Co., Cincinnati, Ohio		
Wheelwright Consolidated School District		
Bonds Voted Warrants Issued Interest 5 per cent		
Warrants 3 to 15 Inclusive to Inland Steel Co.		
Payable 1,000.00 annually on April 6th years 1936 to 1948 inclusive		
Total		13,000.00

SCHEDULE S

Floyd County, Ky., Board of Education  
WARRANTS OUTSTANDING

No.	Name	Date	Amount
98	Stewart, Powers and Carter	Dec. 13, 1929	4,701.69
101	Gearheart and Harris	June 20, 1930	3,028.97
102	E. H. Hale	June 21, 1930	8,579.90
111	W. H. Richardson	Aug. 8, 1930	777.77
112	Gearheart and Harris	Aug. 8, 1930	1,500.00
125	G. M. Hale	Aug. 8, 1931	330.00
132	Theodore Kuntz and Co.	June 12, 1931	3,573.27
151	Theodore Kuntz and Co.	Apr. 11, 1932	1,193.20
170	Auxiliary Cons. Dist.	July 7, 1932	2,000.00
173	Sandy Valley Hdwe. Co.	Aug. 18, 1932	426.64
180	F. A. Maggard and Co.	May 10, 1933	1,165.10
181	Lucille Kuykendall	May 13, 1933	1,000.00
183	Gomer Sturgill	May 23, 1933	347.47
191	West Va. Seating Co.	June 5, 1933	1,556.50
193	Claud C. Farley	June 5, 1933	1,008.00
194	Sandy Valley Hdwe. Co.	June 5, 1933	418.59
195	Sandy Valley Hdwe. Co.	June 5, 1933	347.47
199	May Hale	July 3, 1933	133.30
202	Carl Hatcher	July 5, 1933	132.70
210	G. C. Johnson	July 17, 1933	250.00
215	Beatrice Collins	Aug. 21, 1933	67.85
218	Stewart, Powers and Carter	Sept. 7, 1933	1,658.62
225	Graydon Akers	Sept. 26, 1933	69.50
227	Stewart, Powers and Carter	Oct. 7, 1933	1,328.00
232	Stewart, Powers and Carter	Oct. 7, 1933	500.00
233	Stewart, Powers and Carter	Oct. 7, 1933	500.00
234	Stewart, Powers and Carter	Oct. 7, 1933	672.00
239	Martin Lumber Co.	Nov. 20, 1933	609.74
237	Clayborn Stephens	Oct. 1933	500.00
240	F. S. Vanhouse and Co.	Dec. 9, 1933	250.00
240	F. A. Maggard	No Stub	2,000.00
241	R. S. Hayes	Dec. 23, 1933	686.70
241	H. F. Patton	Dec. 9, 1933	95.28
243	West Va. Seating Co.	Jan. 13, 1934	1,147.77
242	Sandy Valley Hdwe. Co.	Dec. 9, 1933	1,286.46
246	West Va. Seating Co.	Jan. 16, 1934	574.33
243	Cumberland Ins. Agency	Jan. 16, 1934	1,000.00
244	Esco Hunter	Apr. 7, 1934	1,304.51
244	A. J. Archer	Dec. 9, 1933	192.00
246	Justice Lumber Co.	Apr. 16, 1934	1,108.75
247	Palmer Hall	May 12, 1934	645.15
13	Justice Lumber Co.	Feb. 19, 1934	320.00
14	Justice Lumber Co.	Apr. 15, 1935	349.50
11	James Weaver	Mar. 4, 1935	1,500.00
12	C. H. Farley	Mar. 18, 1935	100.12
13	Carl Hatcher	Mar. 18, 1935	317.65
14	Den Williamson and Co.	Mar. 28, 1935	242.00
15	Harcourt and Co.	Apr. 1, 1935	333.95
16	A. Flanagan and Co.	Apr. 15, 1935	311.69
17	Inland Steel Co.	Apr. 29, 1935	800.00
18	Ishmael Triplett	June 14, 1935	770.92
Total			200.00
Total			51,435.59

SCHEDULE T

Continued on page ten

CLUBWOMEN  
IN ANNUAL

Annual session held at Maytown and Whitesburg. Both federated, but are very encouraging. Reports various clubs this year find these

178,994.69  
221,005.80  
894,900.49  
259,510.71  
135,389.78

382.22  
435.59  
809.00  
817.81  
428.03  
135,389.78  
38,584.91

Dec. May 1  
4,000.00  
4,000.00  
5,000.00  
5,000.00  
6,000.00  
7,000.00  
7,000.00  
7,000.00  
8,000.00  
8,000.00  
8,000.00  
9,000.00  
9,000.00  
87,000.00

City  
9,000.00

July 1  
1,000.00  
1,000.00  
1,000.00  
1,000.00  
1,000.00  
1,000.00  
1,000.00  
1,000.00  
1,000.00  
1,000.00  
12,000.00

13,000.00

Amount  
4,701.69  
3,026.97  
8,579.90  
777.77  
1,500.00  
500.00  
3,379.27  
1,193.20  
2,000.00  
426.64  
416.00  
165.10  
350.00  
1,556.50  
1,008.00  
418.59  
347.47  
183.30  
162.76  
230.00  
67.85  
1,658.62  
69.50  
1,328.00  
500.00  
500.00  
672.00  
609.74  
250.00  
2,000.00  
686.70  
95.28  
1,147.77  
1,286.46  
574.33  
1,000.00  
1,304.51  
1,100.00  
1,108.75  
645.15  
320.00  
349.50  
1,500.00  
100.12  
317.65  
242.00  
323.95  
311.69  
290.00  
770.92  
200.00  
51,435.59

# \$3,600,000 IN STATE TAXES

THE revenue from taxes on alcoholic beverages is now the State of Kentucky's fourth-largest single source of income. . . . In addition to eight forms of taxes paid to the State, the distilling industry in Kentucky now pays seven forms of taxes to the Federal Government, four forms to counties, and four to cities within the State. . . . Unless you vote "Yes" on November 5, all this revenue will be lost, and the taxpayers of the State will be forced to make up the deficit.

## What the Distilling Industry Does for Kentucky

**COAL** . . . Kentucky distillers bought over 200,000 tons of Kentucky coal last year. The mining of this coal provided an entire month's work for over 2000 Kentucky miners—work which may be lost forever if you vote "No" in November.

**GRAIN** . . . Kentucky distillers purchased 9,000,000 bushels of grain last year, at a cost of over \$10,000,000. This market for grain will be lost to Kentucky farmers if the distilling industry is driven from Kentucky.

**LUMBER and COOPERAGE** . . . Kentucky barrel man-

ufacturers sold 800,000 barrels to Kentucky distillers last year. These barrels were made from 80,000,000 feet of white oak lumber—at current prices, worth more than two and a half million dollars in cash.

**OTHER INDUSTRIES** . . . In addition to those mentioned above, dozens of other industries and occupations in Kentucky derive some if not all their business and income from the distilling industry in Kentucky. Railroads, hotels, equipment manufacturers, bottle makers, printing houses, newspapers, merchants of all sorts, everybody in Kentucky owes some benefit to this \$100,000,000 industry.

*If you want the State to continue collecting \$3,600,000 per year in taxes from the distilling industry instead of from you and your neighbors—if you want the State to retain all the other benefits of this \$100,000,000 industry—*

# VOTE YES ON NOV. 5 FOR REPEAL AND REGULATION

KENTUCKY REPEAL & REGULATION LEAGUE  
FRANCIS BUILDING • LOUISVILLE

## CLUBWOMEN MEET IN ANNUAL SESSION

Maytown And Lackey Clubs  
Hostesses; Mrs. May Is  
Narcis District  
Governor

Annual session of the Seventh district, Kentucky Federation of Woman's Clubs, was held at Maytown Saturday, being entertained jointly by the Maytown and Lackey clubs. Both these clubs are newly federated, but are very active and were splendid hostesses. Federated clubs of the district are Prestonsburg, Maytown, Lackey, Pikeville, Jenkins and Whitesburg, and all were well represented, with approximately 80 clubwomen present. Reports from the various clubs this year were very encouraging, and the clubs find themselves busier year.

and their help more demanded each year by their respective communities. Mrs. Paul R. Wickliffe, of Greenville, Ky., state president, made an encouraging talk on the aims of club work. This talk was supplemented by the appearance before the meeting of F. A. Magrard, district director of the Federal Youth Movement, who asked the aid of clubwomen in carrying out this program. The entertainment feature of the day was the rendering of a group of folksongs by Mrs. Edith Fitzpatrick James. Dressed in a beautiful, old-fashioned, home-spun dress, Mrs. James, with her discussion of the sources of balladry and her perfect mimicry, was so delightful that the state president of the federation urged her to appear at the state convention to be held in Harrodsburg, Ky., in May, next. By request, Mrs. James

sang a classical number at the conclusion of her part of the program, and thus gave splendid proof of the versatility and range of her voice. The actual companion for her concluding number was played by the Miss Dorothy Davis, of Prestonsburg, who also rendered piano solos at other times during the day. An interesting feature was the appearance of Miss Lucy Furman, noted state novelist, who made a compelling plea against the trapping of our fur-bearing animals. Resolutions adopted at the session were: To continue the work already begun for the protection of wild flowers by working for the creation of a national park in the "Break-a-Sandy" area. To solicit the state convention for this district in 1937. To make a special effort to lead girls and women of this

## LESLIE DRAWS TWO YEARS IN SLAYING

Of Jack Harris at Emma;  
Says He Will Appeal  
Sentence

Harry Lee Leslie was given of a two-year penitentiary term from a jury in the Floyd circuit court upon his conviction of the slaying of Jack Harris at Emma a few months ago.

It was the last murder case on the present court docket. Leslie claimed that he and Harris had had trouble over a horse owned by Leslie at Emma, and testified that Harris had threatened his life. When he testified, Harris approached him with his hand in his pocket he thought that Harris intended to cut or stab him. Commonwealth witnesses testified that Harris was unarmed, that Leslie had slapped Harris, a few minutes before the shooting, and that Leslie shot him when unendangered.

**\$5.00 REWARD**—I will pay a reward of \$5 for the return of a white Spitz dog stolen from my restaurant and for information identifying the person who committed the slaying of Jack Harris. H. E. Stewart  
17-pd

## POLITICAL ANNOUNCEMENTS

For County Board of Education  
We are authorized to announce  
**ROMEYN C. DYER**  
brother of the Board of Education of the Fayette County Board of Education. We are authorized to announce your support and influence will be appreciated.

FOR BOARD OF EDUCATION  
Harold Bailey, Garrett, Ky., and Guy Childers, Martin, Ky., November election 1935. Endorsed by Town Hall and Friends.

For Member, Floyd County Board of Education  
We are authorized to announce  
**A. W. (HUB) COOLEY**  
of Wayland, Ky., as a candidate for member of the Floyd County Board of Education.

### PROFESSIONAL CARDS

**A. J. MAY**  
Attorney and Counselor  
Practices in all courts  
Fitzpatrick Bldg.  
Prestonsburg, Kentucky

Prestonsburg Lodge No. 293  
**L. O. F.**  
Meets first, second, third and fourth Thursdays in each month.  
Visiting Brothers Welcome.  
**W. M. GOBLE, N. G.**  
**JOHN L. GUNNELL, V. G.**  
**L. V. GOBLE, Warden**  
**W. J. VAUGHAN, Treas.**  
**W. G. AFRICA, Secretary**

**DR. J. S. KELLY**  
Dentist  
Wright Building, corner of Court and Second, Prestonsburg, Ky.  
PHONE 46

**Dr. K. J. Whaley**  
OFFICE  
142 Third Ave.  
Prestonsburg, Ky.

**DR. R. H. MESSER**  
Dentist  
Peaver Valley Hospital  
Martin, Ky.  
At Garrett Office on Wednesdays and Thursdays

**DR. C. R. SLOAN**  
Dentist  
Layne Bldg., Court St.  
Phone No. 211  
Prestonsburg, Ky.

**M. T. DOTSON, M. D.**  
Office: Opposite court house.  
Phone 234.

FOR RENT—The rooms, odd floors in the best office space in town. Reasonable rates. See W. J. VAUGHAN, 6-14-35

To Whom It May Concern

October 23, 1935. This is to certify that the undersigned will not be held responsible for any debts or obligations created by my wife, Dollie Allen 20145, and all merchants and persons in business are hereby requested and notified to obey this notice. This means for accounts at any store or any other place to be charged to the undersigned and after the date he will not be responsible or pay anything charged to him.  
John L. Pitts  
10-25-35

Morgan Spradlin, of Dewey, was reported Wednesday as a patient in the King's as being slightly improved. Daughter's hospital and as Mr. Spradlin is a brother of seriously ill, though his condition Mrs. Bess Williams of Pres-

Ruth Ann and Sally Francis, small daughters of Mr. and Mrs. F. A. Maggard, of Frankfort, are visiting their grandparents, Mr. and Mrs. D. B. Stephens, and also Judge and Mrs. Malone Hall at Alban.

Senator A. O. Stanley spoke at Hindman, Hazard, Pikeville and Paintsville this week in behalf of the candidacy of A. B. "Happy" Chandler for Governor. Senator Stanley was accompanied on the tour by Congressman A. J. May.

Wanted—Men and boys to represent the News Enquirer, the new daily and Sunday newspaper, which will be published in Louisville, the issue being October 122. Address: News Enquirer, 116 South Brook Street, Louisville, Kentucky.

RELIABLE MAN WANTED to call on farmers. Make up to \$12 a day. No experience or capital needed. Write McNESS Co., Dept. M, Freeport, Illinois.

DOES YOUR RADIO NEED REPAIRS? CALL RALPH B. DAVIS, Phone 59. Expert repairing.

WANTED—Automobile salesman. Call phone 151. It

For Fine Quality and Real Hop Flavor, Drink

**BRUCK'S BEER**

and **BRUCK'S PALE ALE**

RECOGNIZED AS THE BEST!

(Read That Again!)

Distributed by  
**Louisa Coca Cola Bottling Company**

Telephone 23—Louisa, Kentucky



The whiskey Kentuckians call "double rich"  
**SCHENLEY'S**  
*Cream of Kentucky*  
The Kentuckians' favorite straight whiskey brings that extra deliciousness to whiskey drinks that fine whiskey judges expect of a true Kentucky whiskey

This Mark of Merit on every bottle of Schenley's Cream of Kentucky is your absolute assurance of delicious quality and the most in value.



Tomorrow! THE NEW  
**1936 PONTIAC**  
*Silver Streak*  
SIXES and EIGHTS

More beautiful than ever

and **BUILT TO LAST 100,000 MILES!**

- ALL THAT'S BEST OF ALL THAT'S NEW**
1. Solid Steel "Turret-Top" Hood & Fender
  2. Improved triple-sealed hydraulic brakes with new chrome-nickel alloy drums
  3. Enclosed Engine on "A" and De Luxe "G"
  4. Smoothest "G" and "V" cylinder engines with air-valley bearings and full-pressure metered lubrication
  5. Electroplated, light-weight nickel-alloy pistons
  6. All-steel Synchro-Mesh transmission
  7. Simplified starting with automatic choke
  8. Enclosed luggage and spare tire compartment
  9. New full-length water-jacketed cylinder
  10. True stronger Double K-T frame

YES, the new Pontiacs are actually more beautiful than before, with a new front-end, new headlight mounting, a different hood, different running boards, and a decidedly different rear end. The only the inside story. The inside story is even more remarkable. The 1936 Silver Streaks are built to last 100,000 miles.

The brakes are triple-sealed hydraulics with warp-proofed drums of fused iron on steel. The solid steel "Turret-Top" Fisher Bodies and No-Draft Ventilation, insulated roof, and built-in luggage and spare tire compartments. Clutch, brakes, and engines are even smoother, while the Synchro-Mesh Transmission is silent in every speed. And the even more economical engine feature cooling and lubricating systems that are models for the entire industry! See the new Pontiacs—and keep an open mind until you do.

PONTIAC MOTOR COMPANY, PONTIAC, MICHIGAN

**'615**

On Display Saturday, Oct. 26 at  
**CARTER MOTOR SALES**  
PRESTONSBERG, KY.

(Continued from page six)  
**Floyd County, Kentucky, Board of Education**  
**ACCOUNTS PAYABLE**  
June 30, 1935

Name	Amount
Teachers-Salaries Accrued	7,013.25
Central School Supply Co.	165.75
The W. Williams Co.	397.98
Book Supply Company	366.70
Little Brown and Company	54.85
Louisville Chemical Company	180.00
Winter Homes Corporation	102.25
Wendell Coal Company	135.50
F. S. Vanhoyse and Company	121.10
Tommy Salisbury	59.00
Morell Supply Company	307.25
Milton Bradley Company	7.53
Harvey and Noble	90.29
F. B. Compton	15.62
Ky. and West Va. Power Co.	10.42
Warren Gas Company	5.15
Taulbee Bailey	102.00
Mr. Kitty Allen Dingus	83.00
Minnie Hale Turner	95.00
Elizabeth Baker	85.75
Ans. May Beryby	83.00
Thelma Hicks	87.25
Shirley Allen	89.00
Emma Lou Lucas	89.75
Everett Hale	210.00
Jack Branham	247.00
Ed Allen	188.82
Ed Allen	25.50
Ed Allen	25.00
Missouri Stores Company	10.81
Ky. and West Va. Power Co.	9.19
Allen and Tackett	50.00
Dr. M. T. Tolson	10.00
Winter Homes Corp.	150.00
Harcourt and Company	162.42
K. Moore	117.50
Jack Branham	240.00
Jack Branham	245.00
Total	111,382.22

**SCHEDULE U**

**OVERPAID COMMISSION ON CONSOLIDATED DISTRICTS**

District	Schedule	Amount
Drift	C	54.35
Betsy Layne	D	71.91
Bosco	E	15.73
Drift	F	39.17
Dwale	G	20.25
Garrett	H	58.05
Harold-Laynesville	I	49.08
Lackey	J	27.03
McDowell	K	84.46
Maytown	L	15.72
Wayland	N	59.97
Wheelwright	O	61.34
Total Overpaid Commissions		726.06

**SCHEDULE V**

**INTEREST ON AVERAGE MONTHLY BALANCES**  
From July 1, 1934 to June 30, 1935

Fund	Schedule	Amount
Auxiliary	C	15.87
Betsy Layne	D	14.48
Bosco	E	9.47
Drift	F	18.75
Dwale	G	9.15
Garrett	H	17.72
Harold-Laynesville	I	15.88
Lackey	J	17.38
McDowell	K	15.50
Martin	L	17.38
Maytown	M	15.50
Wayland	N	17.38
Wheelwright	O	15.50
Total Interest Due		14,588.70 at 2 per cent 16,588.71 at 3 per cent