

THIS REPRODUCTION IS COMPRISED  
OF THE BEST AND MOST COMPLETE  
SET OF ORIGINAL IMAGES AVAILABLE  
AT THE TIME OF THIS PROJECT'S  
INITIAL START. THE ORIGINAL PAPER,  
INK, FONT, FONT SIZE AND QUALITY  
OF THE MICROFILMED IMAGES  
CONTRIBUTE AND AFFECT THE  
QUALITY OF THE FINAL PRODUCT.

# Floyd County Times

A PROGRESSIVE PAPER FOR PROGRESSIVE PEOPLE

TENTH YEAR

NUMBER 11 Prestonsburg, Floyd County, Kentucky, Friday, September 27, 1935

\$1.50 PER YEAR

## STRIKE IN FLOYD AS PARLEYS FAIL

### 400,000 Miners Idle in Soft Coal Field; 40,000 in County

Between 3,000 and 4,000 miners were idle in Floyd county Monday and Tuesday—and how long thereafter depends upon the outcome of negotiations now under way—as a result of the strike called by John L. Lewis, president of the United Mine Workers of America.

The strike became effective Sunday midnight and was called when operators and mine union heads failed to agree on the tonnage rate for the digging and loading of coal.

In this county, according to all information available to The Times, the strike is "100 per cent" only a few maintenance men being still at work. No disorders have been reported.

The mine workers demanded a nine-cent increase in pay for coal loading, and after prolonged negotiations in Washington between operators and union heads, with Edward F. Crady, assistant Secretary of Labor, acting as intermediary, the operators agreed to a seven and one-half cent increase.

Union officials estimate that 400,000 soft coal miners in the states of Kentucky, Pennsylvania, West Virginia, Ohio, Illinois and other bituminous-producing states are idle as a result of the strike.

A new ultimatum from miners to mine operators, raised double Tuesday as to the speed with which the soft coal strike might be settled.

John L. Lewis, president of the United Mine Workers, emergency from conference on the thorny problem with the assertion that the miners would not agree to less than a nine cents a ton increase in pay for men who dig and load coal.

Edward F. McGrady, assistant Secretary of Labor, had reported the operators willing to agree to a seven and one-half cents boost.

Referring to the nine cent ultimatum as the union's "last word"—all other points at issue had been settled—Lewis said the special subcommittee of two miners and two operators are still engaged in a "thumb twiddling talk" toward "as far as we're concerned, they can take it or leave it," Lewis said. "These mutual admiration sessions are beginning to wear out as far as we are concerned."

McGrady, President Roosevelt's representative, sat in an antechamber outside the negotiating room. He said he still hoped there would be a speedy agreement.

Secretary Perkins at her press conference expressed optimism as to the "ultimate outcome" of negotiations.

"I share with Mr. McGrady the feelings of optimism about the outcome, but I would not want to date it," she elaborated.

## WEEKSBURY MINER IS ENCEPHALITIS VICTIM

Elmore White, Weeksbury miner, died at the Beaver Valley hospital, Martin, Tuesday morning, a victim of encephalitis from which he had suffered for the last two weeks.

The body was brought here and prepared for burial by E. P. Arnold, then was returned to Weeksbury. Funeral arrangements had not been announced when this was written Wednesday.

## HUSBAND HERE SEEKING WIFE AND OTHER MAN

William L. Stanley, of Madrid, was in Prestonsburg this week, seeking information of the whereabouts of his wife, Cinda Stanley. Stanley wants Floyd county authorities to maintain a watch for his wife and Elmer Carnell for whom, he said, he has information on warrants in the Greenup county court. He charges the couple with bigamy and, in another warrant alleged against Carnell violation of the Mann act. The couple is being accompanied, he said, by My and Mrs. Stanley's sons, aged 9 and 5 years.

## NEWSOME GIVEN LIFE PENITENTIAL

Jury Makes Verdict in Hour After Failure Reported.

(Pike County News)

A trial which opened in circuit court here last Friday ended shortly after noon Tuesday when a jury which had deliberated but one hour, returned a verdict finding Robert Newsome, a paroled convict, guilty of murder in connection with the slaying of Deputy Constable Cline Tackett at Robinson Creek last June. The jury fixed his punishment at life in the state penitentiary.

A few minutes after the case was given to the jury Tuesday noon the jurors took back and announced that they were unable to reach an agreement but were advised by Judge Fields to deliberate further. After the verdict was announced it was rumored that a number of the jurors first asked for the supreme penalty.

The case was keenly contested with Newsome claiming that he fired in defense of his own life. Commonwealth witnesses stated that Tackett, Garrett Johnson and Glenn Osborne on a truck which passed the defendant and Earl Newsome on the highway at Robinson Creek shortly before the shooting. The officer's companion stated that Newsome was apparently intoxicated and they turned around to go back and place him under arrest.

The prosecution contended that as Tackett got out of the truck and placed his hand on Newsome's shoulder, Newsome drew his pistol and fired. Newsome, however, contended that Tackett threatened him as he alighted from the truck and approached him. Tackett and Newsome are reported to have had difficulty a short time before the shooting.

A few months before Tackett's death, Newsome was paroled from the state reformatory where he was serving a sentence in connection with the slaying of a man on Beaver Creek, it was stated.

## RAILWAY COMPANY OFFERS LOW RATES TO ASHLAND

Those from this county who plan to attend the Independent Order of Odd Fellows' celebration in Ashland Friday and Saturday are being offered special rates by the Chesapeake and Ohio Railway Company, J. S. Moles, local agent, announced this week.

Round-trip fare from Prestonsburg and intermediate points is \$2.25 for the Friday afternoon train or that of Saturday morning, returning from Ashland at 5:30 p. m. The afternoon train will be held up two hours Saturday in order to accommodate those attending the celebration, it was said.

## SISTER OF GARRETT BLACKCATS TO PLAY WOMAN IS SUICIDE HAZARD SATURDAY

Geneva Allen Dies Monday in Ashland of Self-Inflicted Wound

Geneva Allen, 18-years old, daughter of Bruce Allen, of Greenup county, and a sister of Mrs. Nora Diller, of Garrett, died Monday morning at 6:30 o'clock in the King's Daughters' hospital, Ashland, of a self-inflicted bullet wound through the upper lobe of the heart.

She shot herself at 11:40 o'clock Sunday night at the home of her uncle and aunt, Mr. and Mrs. Russell "Buck" Allen, of Ashland. She had been making her home there since July 4.

Miss Allen died without giving any reason for her act.

Mr. and Mrs. Russell Allen, two games won by big scores who were at home at the time of the shooting, and Clyde Haney, a neighbor, were several times why she shot herself but her only answer was: "I don't know—I don't know."

Once she cried out: "Oh, why did I do it?" She used a 32-20 revolver which belonged to one of Mr. Allen's sons and which had been lying in a dresser in the room for some time.

Dr. E. C. McGehee, Boyd county coroner, said he would probably hold no formal inquest. The coroner conducted an investigation along with the police officers and says he is convinced the shooting was a suicide and believes a jury inquest would be unnecessary.

Miss Allen is survived by her father and the following brothers and sisters: Mrs. Mary Fritz, Riverton; Mrs. Gladys Coburn, Russell; Ward Allen, Wartland; Mrs. Nora Diller, Garrett; Jack Diller, Middlesboro; Mamie, Elsie May, Morton, Walter and Ruby Allen, all at home. Her mother died six years ago.

Funeral was held at the Allen cemetery Tuesday afternoon, with Rev. W. M. A. Oakes in charge.

## HAZARD SATURDAY

Having passed the first bar of the Hazard road on Saturday last, the Blackcats of the Prestonsburg Blackcats on Saturday afternoon of this week tackled the powerful Hazard high school eleven at Gasco. The "Cats can take this hurdle without a spill, their stock will soar to a level of some of her uncle and aunt, that of last year. Coach Messer is working hard with his charges this week, seeking better blocking and more coordination in the execution of plays.

Hazard comes here with two games won by big scores under its belt, and will furnish the Blackcats a tough afternoon. A big crowd is expected to witness the game.

## SURFACING BEGUN ON MAYO TRAIL

The pouring of concrete on the Mayo Trail was begun last Saturday afternoon by F. C. Gorrell and Sons, contractors on the four miles which have been let for surfacing. They began pouring the surface near the mouth of Rush and the concrete was pushed along as rapidly as possible and already more than a mile of surface on the west half of the road has been laid. It is necessary to halt traffic for short intervals along the part under construction, but for the most part there is little, waiting necessary. The most modern machinery is being used on the road and the contractors have indicated that they will push the project through to completion as rapidly as possible. Paintsville Herald.

## KIWANIANS TO HONOR POULTRY JUDGING TRIO

Members of the championship Floyd county poultry judging team will be guests of honor at the annual meeting of the Kiwanis Club at the Valley Inn, it was announced this week.

In addition to the entire membership of the Kiwanis Club, many guests are expected to join in honoring the boys.

F. M. Burke, of Frankfurt, was a business visitor in Prestonsburg Monday.

## Husband of Greenup County Woman Power Behind Throne

Addis Ababa, Sept. 22.—Emperor, giving out money sparingly on the basis of true New World frugality.

Emperor's constant support is the Emperor's son, Edward, 16, is in school in Boston. Their unpretentious four-room bungalow here is not only a mecca for persons seeking an audience with the Emperor but a rendezvous for all lonely Africans, to whom Mrs. Colman is a hospitable hostess.

## NEED FIGHT BLACKCATS TAKE FIRST TILT, 13-3

Blackcats Take First Tilt, 13-3

After spending an entire half in the doldrums, the Prestonsburg Blackcats came to life in the second half of their game Saturday afternoon with the Raceland Ramblers, quickly pushed over two touchdowns and thus started their season off right.

The score was 13-0 to 6. Raceland scoring in the last period when an ill advised Prestonsburg pass was intercepted by a Raceland back who took the ball in the end zone and raced approximately 85 yards for a touchdown.

Otherwise, the visitors, last year's Little Eight conference champions, offered little or no threat to the "Cats. Throughout the game Prestonsburg had the ball on the defensive.

The "Cats in the first half gained enough ground for three or four touchdowns, but lacked a scoring punch when within striking distance of the "Inevitable" goal.

When they came back in the half, however, they at once buckled down to business. The Prestonsburg blocking which had been conspicuous by its absence, started clicking, and "Out" Archer and "Turkey" Hughes began hitting the line for big gains. These two scored the markers. The extra point gained was made by plunging the line. Look-Whamson and young Dick Mayo showed fine promise in making pretty broken-field plays. Two "end-around" plays, with "Ball Tom" Archer and Ray Craft, the ends, carrying the ball were cleverly executed.

Except for lack of coordination, the big Prestonsburg line played well and gave the visitors little opportunity for gains. The Prestonsburg passing attack as below the standard of that of last year, but is expected to improve. Lack of efficient blocking—which, after all, is what scores touchdowns—severely hampered the "Cats. Coach Messer is working hard to smooth out the rough spots shown in the Blackcat play in this first game.

## FLOYD QUARANTINE FREE FROM DISEASE

For Season Decrease in Typhoid Cases

Floyd county is annually free from typhoid disease for the season when most prevalent diseases are most prevalent. Dr. Marvin Randolph, director of county health, said this week.

There has been only 12 cases of typhoid in the county, with four cases of typhoid fever and eight cases of typhoid meningitis. Scarcity of typhoid in the county is reported to date by the health department.

Dr. Randolph said that the county is free from typhoid in the past year. The county is free from typhoid in the past year. The county is free from typhoid in the past year.

## COURT APPEALS AFFIRM RECOUNT

Hatchers' Lead of 137 Votes for Party

The court of appeals Tuesday affirmed the decision made by the county court in the recount of the vote for the election of the county clerk. The court affirmed the decision of the county court which had counted 137 votes for the Hatchers' party.

The recount was held on Tuesday and the court of appeals affirmed the decision of the county court. The court of appeals affirmed the decision of the county court.

## INLAND STEEL IN COAL LOADING VAN

On C. and O. in State; 329,000 Tons Loaded in Floyd During August

On the basis of 50 tons to the car, 329,000 tons of coal were produced by Floyd county mines last month, figures made available last week show.

Of this tonnage, the Inland Steel Corporation at Wheelwright produced approximately 2,000 cars. Next to Inland in loading were the Elk River Coal Corporation and Koppers Company with approximately 900 and 800 cars respectively. Inland Steel is the largest coal producer on the Chesapeake and Ohio in this state.

Total loadings on the C. and O. system, these figures show, were 70,775 cars, 12,590 of which are produced in Kentucky. The Logan field produced 19,172 cars.

## Wayland Legion Post Is Organized Recently

Organization of a second organization of the Wayland Legion post for this county was recently effected by George A. Pow, Jr., of Wayland. The new post has a membership of more than 50 members, it is reported, with a number of new members in prospect.

Patronize Home Merchants Keep Your Money at Home

## BLACKCATS TAKE FIRST TILT, 13-3

Blackcats Take First Tilt, 13-3

After spending an entire half in the doldrums, the Prestonsburg Blackcats came to life in the second half of their game Saturday afternoon with the Raceland Ramblers, quickly pushed over two touchdowns and thus started their season off right.

## FLOYD QUARANTINE FREE FROM DISEASE

For Season Decrease in Typhoid Cases

## COURT APPEALS AFFIRM RECOUNT

Hatchers' Lead of 137 Votes for Party

## INLAND STEEL IN COAL LOADING VAN

On C. and O. in State; 329,000 Tons Loaded in Floyd During August

Patronize Home Merchants Keep Your Money at Home

## BLACKCATS TAKE FIRST TILT, 13-3

Blackcats Take First Tilt, 13-3

After spending an entire half in the doldrums, the Prestonsburg Blackcats came to life in the second half of their game Saturday afternoon with the Raceland Ramblers, quickly pushed over two touchdowns and thus started their season off right.

## FLOYD QUARANTINE FREE FROM DISEASE

For Season Decrease in Typhoid Cases

## COURT APPEALS AFFIRM RECOUNT

Hatchers' Lead of 137 Votes for Party

## INLAND STEEL IN COAL LOADING VAN

On C. and O. in State; 329,000 Tons Loaded in Floyd During August

# Unique Theater.. Program

Offering For  
Week  
Sept. 29 - Oct 2

FRIDAY—  
"BLACK SHEEP"

with EDMUND LOWE and CLARA TREVOR

SATURDAY—  
"CIMMARON"

with RICHARD DIX. New Serial, "ROARING WEST," with BUCK JONES, and Comedy.

SUNDAY AND MONDAY—  
"BLACK FURY"

with PAUL MUNI and KAREN MORLEY. Also News and Comedy.

TUESDAY AND WEDNESDAY—  
"WEDDING NIGHT"

with GARY COOPER, ANNA STEN and selected Shorts.

THURSDAY—  
"CHARLEY CHAN IN EGYPT"

with WARNER OLAND News and Comedy

Coming SUNDAY, OCT. 6, "IN CALIENTE" with DOLORIS DEL RIO and PAT O'BRIEN.

Unique  
Theater

Prestonsburg,  
Kentucky

Beginning Monday, March 11,  
night shows start at 7:30  
instead of 7:00

"Sound as the Best"

### COURT OF APPEALS

Continued from page 1  
No. 1 Cal Clark, election officer, signed his initials only, and Prestonsburg No. 2 the discrepancy of 23 between the stub book and the book of ballots in Wayland and Prestonsburg. No. 1 were "thrown out" because it was held that the election in signing ballots must sign either name or their initials.

During a pause in the sermon the deacon and whispered to the minister. "Remember, you're going to say something about the high cost of living." "I haven't forgotten," replied the minister, "and I'll speak of it after the service has been taken up."

### 16-YEAR-OLD BOY IS SERIOUSLY CUT

Marsillet's Assailant Not Definitely Known Wayland Woman Shot

Week-end violence in Floyd county consisted of a cutting affray and the shooting of a woman.

Chalie Marsillet, 16-year-old Middle Creek youth, was taken to the Beaver Valley hospital, Martin, Saturday night, suffering a deep knife wound in his throat and stabs in his back. Officials here said they had encountered difficulty in identifying Marsillet's assailant, and so no arrest has been made.

G. D. Ryan, in whose ambulance Marsillet was taken to the hospital, said a man named Hicks accompanied the wounded youth to Martin and admitted that he cut Marsillet.

At the hospital Tuesday afternoon it was said that Marsillet has a good chance of recovery, though his condition is little changed from that of the preceding day.

The other victim of violence in the county is Mrs. Elizabeth Manns, wife of Hrnle Manns, who was shot Saturday night on Steele's Creek, in or near Wayland, by Pearl Manns, her sister-in-law. Jealousy is said to have been the motive for the shooting.

The woman was wounded by the charge of a shotgun

fired, it is said, from a distance of only a few paces. The charge penetrated her thigh. She is recovering, it was said at the hospital at Martin.

### TEACHER SALARY MINIMUM IS \$75

Schedule Submitted by Hunter for Teacher Pay is Approved

Lowest salary any teacher employed by the Floyd county board of education will receive this year is \$75, the salary schedule submitted by Superintendent Ballard Hunter and approved by the state department of education last week provides.

The basal teachers' salary is \$70. This will be supplemented by 25 cents for each semester hour of college training up to 125; \$2 a year for teaching up to five years; \$3.60 to \$6 per teacher for school principals.

The salary schedule under

Continued from page eight  
Floyd County, Kentucky, Board of Education  
ACCOUNTS PAYABLE  
June 30, 1935

Name	Amount
Teachers' Salaries Accrued	7,013.25
Central School Supply Co.	165.75
The McWilliams Co.	397.98
Book Supply Company	363.70
Little Brown and Company	54.85
Louisville Chemical Company	130.00
Minter Homes Corporation	102.25
North-East Coal Company	188.59
F. S. Vanhousc and Company	121.10
Fanny Salisbury	59.00
Morrell Supply Company	307.25
Milton Bradley Company	7.53
Barnes and Noble	30.29
F. E. Compton	15.92
Ky. and West Va. Power Co.	10.42
Martin Gas Company	5.15
Taulbee Bailey	102.00
Mrs. Kitty Allen Dingus	88.00
Minnie Hale Turner	35.00
Elizabeth Baker	86.75
Amy May Begley	88.00
Thelma Hicks	87.25
Shirley Allen	89.00
Emma Lou Lucas	89.75
Everett Hall	210.00
Jack Branham	247.00
Ed Moore	189.22
Ed Allen	25.00
Ed Allen	25.00
Ed Allen	10.81
Missouri Stores Company	9.19
Ky. and West Va. Power Co.	50.00
Allen and Tackett	19.00
Dr. M. T. Dotson	150.00
Minter Homes Corp.	162.42
Harcourt and Company	117.50
K. Moore	240.00
Jack Branham	245.00
Jack Branham	245.00
Total	111,822.22

SCHEDULE U  
Floyd County, Kentucky  
OVERPAID COMMISSION ON CONSOLIDATED DISTRICT

District	Amount
Auxier	54.55
Betsy Layne	71.91
Bosco	18.73
Drift	39.17
Dwale	20.25
Garrett	35.05
Harold-Laynesville	47.08
Lackey	27.03
McDowell	64.46
Martin	81.73
Maytown	160.99
Wayland	59.97
Wheelwright	61.34
Total Overpaid Commissions	728.08

SCHEDULE V  
Floyd County, Kentucky  
INTEREST ON AVERAGE MONTHLY BALANCES  
From July 1, 1934 to June 30, 1935

Fund	Amount
Auxier	12.07
Betsy Layne	14.48
Bosco	9.47
Drift	12.75
Dwale	9.15
Garrett	3.72
Harold-Laynesville	9.20
Lackey	8.05
McDowell	14.09
Martin	17.18
Maytown	68.80
Wayland	10.40
Wheelwright	13.31
Teachers' Fund Average Monthly Bal.	14,952.70 at 2 per cent 299.05
General Fund Average Monthly Bal.	16,322.71 at 2 per cent 326.45
Total Interest Due	832.12

which teachers in the Prestonsburg graded school will be paid had not been approved when this was written Tuesday, and may not be adopted until next week. The basal salary may be from \$5 to \$10 lower than that of last year, it was predicted. Last year, basic monthly teacher pay in the graded school was \$55, with 25 cents per college hour up to 125 and \$55, with 25 cents per college hour up to 128 and \$2.50 for teaching experience up to and including four years supplementing this salary.

The county and city boards of education remained out of hiring teachers for the Prestonsburg and Floyd county high school when this was written, and from one source came the statement that the county board may pay the teachers it hired, leaving the city to pay faculty members it selected. From another source, however, came the prediction that all difficulties would be ironed out within a few days and that the two boards, as before, would share the expenses of the school. High school teachers hired by the county, if paid by the county board alone, will receive \$112 monthly.

County Judge E. M. Moore, of Knox county, was a court visitor here this week.

Special for This Month  
Lady's or Gents'  
**YELLOW GOLD WRIST ELGIN**  
For \$18.75  
Also fine watch repairing at reasonable prices.  
**DAN HEFNER**  
PRESTONSBURG, KY.

Mrs. Joe Hobson is a patient in the Jewish hospital, Cincinnati, O., where she underwent an operation. Friends of Mrs. Hobson have been informed that her condition is favorable to an early recovery. She was accompanied to Cincinnati by her husband and by her parents, Mr. and Mrs. F. H. Cottrell.

Ballard Hunter, superintendent of Floyd county schools, returned last week from Frankfort where he transacted business connected with the school administration of this county.

FOR RENT - 4 furnished rooms on Third avenue, Prestonsburg, good location.  
MRS. T. Y. MARTIN.  
7 19 st

Watch Your Kidneys  
Be Sure They Cleanse  
YOUR kidneys are doing waste matter. But kidneys that are not doing their work—fail to remove the waste from the system. Then you may suffer from backache, rheumatism, dizziness, headache, nervousness, getting tired, limbs, feel nervous, all night.  
Don't delay! Don't let your kidneys become diseased. Get them fixed.  
**DOAN'S**

TWO NATURALS  
STRAIGHT WHISKEY  
GLENMORANGIE DISTILLERS CO.

The Best Law—The Golden Rule.  
The Best Education—Self Knowledge.  
**Pain Passes Off**  
When your head aches; when Neuralgia tortures you; when Muscular Pains make you miserable—take a Dr. Miles' Anti-Pain Pill.  
Dr. Smith is one of millions who have found this easy way to prompt relief. He says: "I keep Dr. Miles' Anti-Pain Pills in my pocket and when I get a dull heavy feeling in my head, I take a Dr. Miles' Anti-Pain Pill and the pain passes off."  
**-ANTI-PAIN PILLS-**

**Ryan Funeral Home**  
Martin Ky.  
Funeral Directing and Embalming  
Caskets, Dresses and Suits.  
Day and Night Ambulance Service Anywhere.  
OUR HOME NEVER SLEEPS  
PHONE 24-X, MARTIN, KY.  
G. D. Ryan, Prop.

# Floyd County Board of Education AUDIT REPORT

## From July 1, 1934 to June 30, 1935

Paintsville, Ky., Sept. 25, 1935  
Ballard Hunter, Superintendent,  
and Members of the Board of Education  
of Floyd County, Kentucky,  
Prestonsburg, Kentucky.  
Gentlemen:

Pursuant to your instructions, I have made a detailed audit of the books of account and records of the Board of Education, Floyd County, Kentucky, for the period July 1, 1934, to June 30, 1935, also made the settlement with the Sheriff for the taxes collected for the various Consolidated Districts and submit herewith, Balance Sheet, Statement of School Fund, covering all your receipts and disbursements, except the Sinking Funds, detailed statements of each Consolidated District and the necessary supporting schedules.

I found your records well kept and expenditures all allowed by your board. Particular attention is called to the following Schedules:  
Schedule B. (School Fund) As noted above, this Schedule includes all of the receipts and disbursements. The detailed statements of the Consolidated Districts are set out for your information and are not additional receipts and disbursements.

Schedule Q. (Reconciliation of Bank Balances) While there might be some question as to advisability of carrying this Bank Balance at the close of the Fiscal Year, it appears to be necessary to take care of the current expenses for the Rural Schools until your receipts commence coming in.

Schedule R. (Recapitulation of Indebtedness) This Schedule shows a net reduction of indebtedness for the Fiscal Year of \$88,504.91 after eliminating all Bank Balances. I believe this speaks for itself without any further comment.

Schedule T. (Warrants outstanding) Includes one warrant, duplicate of Number 240, issued by the preceding administration; this warrant is for \$886.70; payable to F. A. Maggard and there was no stub or record of same.

Schedule U. (Accounts payable) Are as taken from your books and include accrued teachers pay rolls.

Schedule V. (Overpaid commission on Consolidated districts) Section 4426-2 Carroll's statutes only allow the Sheriff 1 per cent. This excess commission is noted for your information.

Schedule W. (Interest on average general monthly balances) Under an order entered by your Board July 2, 1934, your depository was required to pay 2 per cent on average monthly balances. This amounts to \$892.12 and has not been paid.

I was given all assistance possible by your Superintendent and his helpers and take this opportunity of thanking them.

I certify that, in my opinion, subject to the comments above, the accompanying Balance Sheet and supporting schedules, fairly reflect the financial transactions of the Board for the period named and the condition of the various funds as of June 30, 1935.

ALFRED D. ROBERTS,  
Public Accountant.

### INDEX

Balance Sheet	Schedule	A
School Fund, Year 1934-1935	Schedule	B
Auxier Consolidated School Fund	Schedule	C
Auxier Sinking Fund	Schedule	C
Betsy Layne Consolidated School Fund	Schedule	D
Bosco Consolidated School Fund	Schedule	E
Drift Consolidated School Fund	Schedule	F
Dwale Consolidated School Fund	Schedule	G
Garrett Consolidated School Fund	Schedule	H
Harold-Layneville Consolidated Fund	Schedule	I
Lackey Consolidated School Fund	Schedule	J
McDowell Consolidated School Fund	Schedule	K
Martin Consolidated School Fund	Schedule	L
Martin Sinking Fund	Schedule	M
Maytown Consolidated School Fund	Schedule	N
Wayland Consolidated School Fund	Schedule	O
Wheelwright Consolidated School Fund	Schedule	P
Certification of Corporation	Schedule	Q
Reconciliation of Bank Balances	Schedule	R
Recapitulation of Indebtedness	Schedule	S
Bonded Indebtedness	Schedule	T
Warrants Outstanding	Schedule	U
Accounts Payable	Schedule	V
Overpaid Commission	Schedule	V
Interest Due on Monthly Balances	Schedule	W

### Floyd County, Kentucky BALANCE SHEET BOARD OF EDUCATION June 30, 1935

<b>Assets:</b>	
Bank Balance	\$ 48,088.08
Sinking Fund balances	340.00
Buildings and Equipment	589,781.64
<b>Accrued Expenditures:</b>	
Teachers' Salaries	\$7,938.00
Maintenance and Operation	3,136.50
Transfer (Auxier)	2,000.00
Total Assets	\$651,284.57
<b>Liabilities</b>	
Accounts payable	\$ 11,382.22
Bonds Funding	87,000.00
Bonds, Auxier Consolidated	340.00
Bonds, Martin Consolidated	12,000.00
Bonds, Wheelwright Consolidated	13,000.00
Warrants Outstanding	51,435.59
Excess of Assets over Liabilities	467,466.76
Total Liabilities	\$651,284.57

### SCHEDULE A

### Floyd County, Kentucky STATEMENT OF SCHOOL FUND From July 1, 1934 to June 30, 1935

Balance July 1, 1934	9,289.93
<b>Receipts</b>	
State	158,966.76
Consolidated Districts	33,379.33
Delinquent Taxes	822.50
Loans	9,000.00
Other Receipts	3,418.25
<b>Levies:</b>	
Real and Personal Property	6,526,236.00 .50 \$2,262.18
Bank Shares	14,973.00 .40 57.89
Corporations	14,136,739.00 .50 70,683.73
Omitted List	25,985.00 .50 134.93
Polls	7,224.00 .50 3,612.00
Consolidation Coal Co.	183.45

State Revenue Agent	20.74	110,890.82
<b>Credits:</b>		
Exonerations	92,876.00 .50	46,438.00
Exonerations, Bank Shares	16,973.00 .40	6,789.20
Delinquents	50	277.20
Duplicate Assessments	143,315.00 .50	71,657.50
Land Sales	379,835.00 .50	1,899.19
Polls	4,524.00	2,262.00
Discount Allowed	136.99	67.49
<b>Deductions:</b>		
Commission	1,027.32	101,721.97
Forward		316,598.74

### Floyd County, Kentucky STATEMENT OF SCHOOL FUND From July 1, 1934 to June 30, 1935

Forward	316,598.74
<b>Disbursements:</b>	
General Control	
Salaries	6,240.00
Overhead	3,324.18
Teachers' Salaries	204,460.64
Other Instruction Expense	3,396.33
Operation	8,625.93
Maintenance	1,553.44
Auxiliary Agencies	2,870.46
Fixed Charges	2,405.33
Capital Outlay	10,389.51
Loans Repaid	9,000.00
Funding Bonds Paid	4,000.00
Wheelwright Con. Dist. Bonds	1,000.00
Transfer to Sinking Fund	1,800.00
Balance June 30, 1935	48,088.08

### SCHEDULE B-2

### Floyd County, Kentucky STATEMENT OF AUXIER SINKING FUND From July 1, 1934 to June 30, 1935

<b>Receipts</b>	
Transfers from Auxier Con. School Fund	600.00
<b>Disbursements:</b>	
Magnus and Co. (Interest on bonds)	540.00
Balance June 30, 1935	60.00
Balance per Bank Statement	60.00

### SCHEDULE C-1

### Floyd County, Kentucky STATEMENT OF AUXIER CONSOLIDATED SCHOOL FUND From July 1, 1934 to June 30, 1935

Balance July 1, 1934	600.11
<b>Receipts:</b>	
Real and Personal Tickets—Rate .75	842.95
Ky. and West Va. Power Co.	95.73
C. and O. Railway Co.	1,934.14
Ky. and West Va. Gas Company	8.31
Railway Express Agency	.63
Uncollected Tickets	2,881.76
Commission 3 per cent	163.91
Due Sheriff (Overpayment)	2,717.86
<b>Disbursements:</b>	
Charlie Patton	8.00
Vanhooose Lumber Company	67.28
Prestonsburg Publishing Company	7.50
A. B. Meade	12.95
Lige Brown	4.00
Morrell Supply Company	17.19
W. H. Horn	52.00
Johnnie Patton	315.00
S. R. Auxier	100.19
John Allen	6.80
L. J. Harris	76.50
A. Flanagan	36.00
Standard Oil Company	9.48
A. J. Archer	273.64
Charlit Patton	5.00
W. A. Long	14.00
G. C. Sturgill	360.00
Frank Branham	70.00
Crayon School Supply Company	3.48
McMillen Company	65.99
Book Supply Company	48.92
North-East Coal Company	265.13
Transfer to Sinking Fund	600.00
Balance June 30, 1935	848.30
Balance per Bank Statement	848.30
Commission on Collections at 2 per cent	54.35
Interest at 2 per cent on average monthly bal.	603.81

### SCHEDULE C-2

### Floyd County, Kentucky STATEMENT OF BETSY LAYNE CONSOLIDATED SCHOOL FUND From July 1, 1934 to June 30, 1935

Balance July 1, 1934	161.89
<b>Receipts:</b>	
Treasurer of Kentucky	448.06
Real and Personal Tickets—Rate .75	1,673.46
C. and O. Railway Company	1,455.07
Southern Bell Telephone Company	14.45
Ky. and West Va. Power Company	633.83
Inland Gas Corporation	11.82
Ky. and West Va. Gas Company	27.57
Uncollected Tickets	8,816.20
Commission 3 per cent	220.59
<b>Disbursements:</b>	
Betsy Layne Service Company	4.13
Rosemary Ellington	102.88
Ky. and West Virginia Power Company	178.45
W. H. Easterling	60.00
Harter Publishing Company	2.55
W. H. Stratton	24.00
Prestonsburg Publishing Company	26.90

(Continued on page six)

month  
LD  
GIN  
le prices.  
ER  
KY.  
ter, superinten-  
county schools,  
week from  
ere he trans-  
connected with  
ministration of  
4 furnished  
d avenue, Pres-  
location.  
Y. MARTIN.

**BOARD OF EDUCATION AUDIT**  
(Continued from page 194)

A. B. Meade	24.32	
L. D. Hunter	385.30	
Ike Moles	14.00	
Tom Deakins	3.00	
Joe Caldwell	3.00	
Ambura Roof	23.70	
Elko-Royd Coal Company	84.50	
Mrs. M. Woods	17.25	
Morrell Supply Company	10.00	
Phillip Howell	6.00	
Eugene Allen	460.00	
George Lewis	160.27	
Sandy Valley Hardware Company	17.24	
C. A. Gregory Company	3.50	
Dixie Chemical Company	31.10	
Call Bros. Hardware Company	65.00	
Minta Woods	2.10	
Ginn and Company	520.00	
Maurice Baker	15.00	
Bill Stratton	210.00	
F. A. Maggard	20.00	
U. S. Staging Company	2.05	
Mollie Layne	60.00	
Hillard Wheeler	6.01	
Beckley Cardy Company	1,362.08	8,968.08
Due from Sheriff		229.67
Balance June 30, 1935		235.68
Balance per Bank Statement		5.01
Check No. 396 Beckley Cardy Co., outstanding		229.67
Commission on Collections at 2 per cent		71.91
Interest at 2 per cent on average monthly bal.	724.09	14.49

**SCHEDULE D**

**Floyd County, Kentucky**  
**STATEMENT OF BOSCO CONSOLIDATED SCHOOL FUND**  
From July 1, 1934 to June 30, 1935

Balance July 1, 1934		180.79
Receipts:		
Real and Personal Tickets—Rate .50	847.82	
Southern Bell Telephone Company	4.22	
Ky. and West Va. Power Company	15.14	
C. and O. Railway Company	468.68	
Inland Gas Corporation	59.61	
Ky. and West Va. Gas Company	146.27	
	1,034.54	
Uncollected Tickets	97.97	986.57
Commission 3 per cent		28.10
		1,089.26
Disbursements:		
Ky. and West Va. Power Company	1.00	
R. B. Mullins	45.45	
A. B. Meade	14.68	
Prestonsburg Publishing Company	2.00	
Hubert Hayes	18.00	
John Allen	9.00	
W. T. Bailey	84.91	
Tip Martin	89	
Due from Sheriff	38.28	209.07
Balance June 30, 1935		889.19
Balance per Bank Statement		880.19
Commission on Collections at 2 per cent		18.73
Interest on Average Monthly Balance	473.59	9.42

**SCHEDULE E**

**Floyd County, Kentucky**  
**STATEMENT OF DRIFT CONSOLIDATED SCHOOL FUND**  
From July 1, 1934 to June 30, 1935

Balance July 1, 1934		129.37
Receipts:		
Real and Personal Tickets—Rate .50	621.86	
Warfield Natural Gas Company	55.09	
Ky. and West Va. Power Company	189.45	
C. and O. Railway Company	515.54	
Ky. and West Va. Gas Company	518.17	1,998.41
Uncollected Tickets		89.49
	1,968.92	1,900.15
Commission 3 per cent		58.77
		2,029.62
Disbursements:		
A. B. Meade	11.07	
Snodgrass Insurance Agency	41.50	
Prestonsburg Publishing Company	1.70	
W. J. Turner	6.13	
Isom Bowens	9.00	
Standard Oil Company	2.68	
Clive Akers	322.50	
W. J. King	4.50	
Joe Stumbo	4.60	
Ed Collins	2.00	
A. J. Archer	20.94	
Prestonsburg Publishing Company	16.25	
Mary B. Vance	78.00	
Nell Beverly	37.50	
Balentine Stumbo	89.00	
Edythe Allen	95.25	
Due from Sheriff	133.93	931.51
Balance June 30, 1935		1,098.01
Balance per Bank Statement		1,098.01
Commission on Collections at 2 per cent		39.17
Interest at 2 per cent on Average Monthly Bal.	637.51	12.76

**SCHEDULE F**

**Floyd County, Kentucky**  
**STATEMENT OF DWALE CONSOLIDATED SCHOOL FUND**  
From July 1, 1934 to June 30, 1935

Balance July 1, 1934		206.30
Receipts:		
Real and Personal Tickets—Rate .50	123.01	
Southern Bell Telephone Company	9.08	
Ky. and West Va. Power Company	80.10	
C. and O. Railway Company	688.15	
Ky. and West Va. Gas Company	226.81	
Railway Express Agency	14	
	1,076.30	
Uncollected Tickets	68.84	1,012.46

County of Floyd to Sheriff (Over Payment) 1,209.91

**Disbursements:**

A. B. Meade	1.00
Prestonsburg Publishing Company	8.20
Morrell Supply Company	1.74
Sandy Valley Hardware Company	23.00
John Branham	284.00
Scott Craft	2.31
C. and O. Railway Company	8.00
Medley Garrett	154.00
Lady May Laxson	155.00
Mary Alice Wright	231.87
The Baker and Taylor Company	14.42
Ky. and West Va. Power Company	890.15
Balance June 30, 1935	319.76
Balance per Bank Statement	319.76
Commission on Collections at 2 per cent	20.25
Interest at 2 per cent on Average Monthly Bal.	9.16

**SCHEDULE G**

**Floyd County, Kentucky**  
**STATEMENT OF GARRETT CONSOLIDATED SCHOOL FUND**  
From July 1, 1934 to June 30, 1935

Balance July 1, 1934		180.25
Receipts:		
Payment for Gas, etc.		2.22
Real and Personal Tickets—Rate .50	1,317.51	
Southern Bell Telephone Company	8.79	
Ky. and West Va. Power Company	100.73	
C. and O. Railway Company	624.58	
Inland Gas Corporation	58.72	
Ky. and West Va. Gas Company	225.90	
	2,346.23	
Uncollected Tickets	433.60	1,902.71
Commission 3 per cent		57.08
		1,945.69
Disbursements:		
Eugene Allen	11.00	
Ky. and West Va. Power Company	191.73	
South Penn. Oil Company	474.46	
John Vanderpool	450.00	
Snodgrass Insurance Agency	228.63	
A. B. Meade	28.50	
Prestonsburg Publishing Company	15.00	
Morrell Supply Company	9.87	
Garrett Lumber Company	51.44	
Standard Oil Company	4.47	
W. M. Mayo	70.00	
Curtis Owens	640.00	
George Patrick	6.60	
Dixie Chemical Company	6.12	
J. E. Campbell	6.00	
Gaylord Bros.	16.85	
G. B. Chaffin	8.50	
Due from Sheriff	119.49	1,981.22
Balance June 30, 1935		96.88
Balance per Bank Statement		100.33
Check No. 383, G. B. Chaffin, outstanding		3.50
Commission on Collections at 2 per cent		36.06
Interest at 2 per cent on Average Monthly Bal.	186.19	3.72

**SCHEDULE H**

**Floyd County, Kentucky**  
**STATEMENT OF HAROLD LAYNESVILLE CONSOLIDATED SCHOOL FUND**  
From July 1, 1934 to June 30, 1935

Balance July 1, 1934		15.29
Receipts:		
Real and Personal Tickets—Rate .75	517.57	
Warfield Natural Gas Company	515.71	
Southern Bell Telephone Company	9.68	
Ky. and West Va. Power Company	187.16	
C. and O. Railway Company	1,184.16	
Inland Gas Corporation	.31	
Ky. and West Va. Gas Company	14.81	
	2,429.56	
Uncollected Tickets	75.15	2,354.20
Commission 3 per cent		70.63
		2,283.57
Disbursements:		
Ky. and West Va. Power Company	66.11	
Harold Cash Store	13.15	
A. B. Meade	20.08	
Prestonsburg Publishing Company	2.00	
Clark and Walters	3.20	
Woodrow Burchett	2.15	
Standard Oil Company	7.86	
Ted Akers	63.95	
Walter James	58.50	
Cora Perry	53.00	
Frank Layne	240.00	
A. J. Archer	50.00	
Tommy Salisbury	15.00	
Edgar Layne	69.00	
Call Bros. Hardware Company	6.44	
Woodrow Burchett	280.75	
G. M. Hale	1.10	
Walters and Hale	2.45	
Denyer Layne	87.25	
Orville Jones	79.00	
Regina B. Layne	79.50	
Montana Layne	87.00	
May Hale	147.99	
Dave Ward	94.69	
Due from Sheriff	666.77	2,086.94
Balance June 30, 1935		211.92
Balance per Bank Statement		211.92
Commission on Collections at 2 per cent		47.08
Interest at 2 per cent on Average Monthly Bal.	480.03	9.20

**SCHEDULE I**

**Floyd County, Kentucky**  
**STATEMENT OF LACKEY CONSOLIDATED SCHOOL FUND**  
From July 1, 1934 to June 30, 1935

Balance July 1, 1934		167.08
Receipts:		
Knott County		542.29
Real and Personal Tickets—Rate .75	493.53	
Southern Bell Telephone Company	11.40	
Ky. and West Va. Power Company	60.12	
C. and O. Railway Company	711.59	
Inland Gas Corporation	115.00	

(Continued on page seven)

PROFESSIONAL CARDS
A. J. MAY
Attorney and Counselor
Practices in all courts
1. O. O. F. Building
Prestonsburg, Kentucky

Prestonsburg Judge No. 293
I. O. O. F.
Meets first, second, third and fourth
Thursdays in each month.
Visiting Brothers Welcome.
W. O. GOBLE, N. G.
JOHN L. GUNNELL, V. G.
L. V. GOBLE, Warden
W. J. VAUGHAN, Treas.
W. G. AFRICA, Secretary

DR. J. S. KELLY
Dentist
Wright Building, corner of Court and Second, Prestonsburg, Ky.
PHONE 46

Dr. K. J. Whaley
OFFICE
142 Third Ave.
Prestonsburg, Ky.

DR. R. H. MESSER
Dentist
Beaver Valley Hospital
Martin, Ky.
At Garrett Office on Wednesdays and Thursdays

DR. C. H. SLONE
Dentist
Layne Bldg., Court St.
Phone No. 211
Prestonsburg, Ky.

Sebelon Lodge, No. 278, F. & A. M., meets in and 3rd Mondays in each month. Members of sister lodges are fraternaly invited to attend. Permanent quarters in our new Temple on Court street. Notice to Candidates: M. A. F. O. Degrees first Mondays.
SHERDAN KAZER, W. M.
J. M. MAY, Secretary

M. T. DOTSON, M. D.
Office: Opposite courthouse, Phone 234.

'NERVES'
Here's a good way to quiet NERVES - A Dr. Miles' Efferescent Neretic Tablet, a glass of water, a sparkling drink. Nerves relax. You can rest, sleep, enjoy life. At your drug store. 25c and \$1.00.

Vaughan & Goble
ELECTRIC WIRING PLUMBING
Work done without delay and with the care that insures you against future trouble. Let us quote you on that next wiring or plumbing job.
Shop located in former City Hall Bldg., First Ave. Phone 231-W
DOVE VAUGHAN J. Y. GOBLE
PRESTONSBURG KY.

LAFLOON WILL NOT CALL SPECIAL SESSION
Governor Laffoon said Saturday night that he would not call a special session of the legislature to repeal the sales tax.
The Governor said his decision was guided by "hundreds of letters from Kentucky citizens who asked that he abandon any plans he might have concerning a special session," it was reported.

"And besides," the Governor said, "I don't want to pull the house down that I built myself. It takes an expert carpenter to build a house, but any fool with a sledge hammer can tear it down."
In speaking of letters from persons in all walks-of-life, Republicans as well as Democrats joined in urging him not to call the session, the Governor said. "And some of them even voted for Chandler."
The Governor in referring to what he termed "a necessary continuation of the sales tax," said that all state warrants sold since the result of the primary became known had brought less than par.
Governor Laffoon declared all state warrants marked in the six months preceding the primary had brought prices ranging above par.

YORK FUNERAL RITES ARE HELD SUNDAY
Last rites for Dr. L. H. York, 84, who died at his home at Louisa Thursday, were conducted Sunday afternoon from the Baptist church in Fort Gay. The Rev. Bascom Lakin, of Fort Gay, widely known Baptist evangelist, preached the funeral sermon.

The Vinson Masonic Lodge of Fort Gay, of which the deceased was a member, officiated at the rites, and interment was made in the Beairs cemetery at Fort Gay.
The active members were: J. B. Kinister, Luce B. R. Vinson, Robert Dixon, J. B. Clayton and Dr. C. B. Rice, Honorary - Ed J. Vinson, R. W. Vinson, G. R. Vinson, M. S. Burns, Dr. W. W. Wray, Dr. L. S. Hayes, Dr. J. E. Carter, Dr. J. W. McNabb, Dr. Ira Wellman and Dr. Jay Bartram.
Probably one of the largest assemblages ever to attend a

alotabs
BILIOUSNESS

HOW WOMEN CAN WIN MEN AND MEN WIN
The FAVOR of Other Men
Unless you take this dose daily from your liver, you will never be able to attract the men of your choice. You get yellow, you get nervous, you get tired, you get old. You get a special dose of Biliousness. You get a special dose of Biliousness. You get a special dose of Biliousness. You get a special dose of Biliousness. You get a special dose of Biliousness.

Vaughan & Goble
ELECTRIC WIRING PLUMBING
Work done without delay and with the care that insures you against future trouble. Let us quote you on that next wiring or plumbing job.
Shop located in former City Hall Bldg., First Ave. Phone 231-W
DOVE VAUGHAN J. Y. GOBLE
PRESTONSBURG KY.

the lawyer writes: "And it was not because I believe that Hauptmann is guilty. I cannot believe, as the state of New Jersey contended, that any one person could have kidnaped the Lindbergh baby.
I have never been able to set my mind at rest as to why Violet Sharpe committed suicide, nor why no one in the house, or that fateful night heard a man entering the window of the nursery. I cannot adjust to my mind the fact that Hauptmann, a stranger, would know that the Lindberghs would be at Hopewell that night when they never before stayed there during the week, nor can I understand the strange actions of those who offer of \$1,000 reward brought response when there were numerous rewards of \$25,000 that went unawarded."

JUDGE J. R. SHEPHARD
Probably one of the most modest men in the county is Judge J. R. Shephard. He consented to let The News have his story last week, but when the time came for the interview, he was too modest to sit through it. Therefore, the writer of this column will have to tell just exactly what he, himself, knows about the Judge.
His business is located at Fullerton, where he and a son own and operate one of that community's best stores. There he proved a success and has carried this success into public office, where the county has greatly benefited by it. When he retires from office Greenup county will know that a successful administration has been carried through.
Today, he is probably one of the most influential men in the county. He was the omnipresent figure in the recent large majority that Greenup county gave Thomas S. Rhea in his race as Democratic candidate for Governor. Caring little for credit, he is a man who does things. Notice the results of the last election. As campaign chairman Rhea in this county, he let only two precincts be carried by the opposition, and his home town came through with their recommendation of Judge Shephard by giving Rhea the great majority of all. He is a great Democratic figure. Mr. Rhea should feel complimented in having him as a supporter.

To date he has succeeded in reducing the county's indebtedness thousands of dollars, and continues to reduce it under all conditions.
Always interested in civic progress, he has gone to a great deal of trouble and personal expense to see a progressive move go through. No one can say that he has intentionally been unfair in any case which has appeared before him since his term on the bench - The Greenup News.

Judge Shephard is a native of Floyd county.
WILL LINDBERGH SAVE HAUPTMANN?
Edward J. Reilly, chief of the defense staff for Bruno Richard Hauptmann during his trial for the murder of the Lindbergh baby, this week declared that the German carpenter's friends damaged his case by bringing the German-Jewish racial issue into the spotlight.
"The conviction of Hauptmann and his approaching execution in the electric chair at Trenton, N. J., brings this factor to the forefront of public discussion, since many are still debating his innocence or his guilt," Reilly states in an article in the current issue of Liberty Magazine.
"Expressly against my orders," he says, "friends of Mr. Hauptmann tried to make it seem that a Jew, Attorney General Wilentz, was persecuting a Christian. They malign Wilentz at every opportunity from the platforms where they were trying to raise funds for the defense and by issuing inflammatory printed leaflets which set forth the whole case was a racial conflict."
This was one reason why Reilly quit the defense staff. "It was not because of non-payment of his fee as most persons seem to think," the

lawyer writes. "And it was not because I believe that Hauptmann is guilty. I cannot believe, as the state of New Jersey contended, that any one person could have kidnaped the Lindbergh baby.
I have never been able to set my mind at rest as to why Violet Sharpe committed suicide, nor why no one in the house, or that fateful night heard a man entering the window of the nursery. I cannot adjust to my mind the fact that Hauptmann, a stranger, would know that the Lindberghs would be at Hopewell that night when they never before stayed there during the week, nor can I understand the strange actions of those who offer of \$1,000 reward brought response when there were numerous rewards of \$25,000 that went unawarded."

W. PRESTONSBURG

Returned Home
Sara Hyden returned home Sunday afternoon from the hospital at Eaintaville where she underwent an operation for appendicitis. Lucile Osborne has come home from the Paintsville hospital, where she was taken for treatment.
Chester Hale, who has been in the Paintsville hospital for the past two weeks, was able to come home Sunday. His many friends will be glad to hear of his recovery.
Mrs. Doll Allen and John L. Pitts were married September 17.

Mrs. Josh Gray is improving at the Martin hospital, where she was taken for treatment.
Miss Carlos Maurden Hale is attending college at Richmond, Ky.
Mr. and Mrs. Gobie Brant announce the birth of a six and one-half pound daughter, on September 12. The little Miss has been named Allen.

INFANTILE PARALYSIS IN LOUISVILLE ABATED

With the infantile paralysis danger removed, approximately 60,000 boys and girls scrubbed their hands and faces and discarded play suits and dresses Monday to return to public and parochial schools in Louisville.
With a vacation two weeks longer than usual ended, approximately 16,000 returned to parochial schools. It was estimated by the Rev. Felix N. Pitt, secretary of the Catholic school board.

RHEA APPOINTED TO OLD POSITION

Frankfort, Ky., Sept. 25 - J. A. Reed, of Russellville, submitted his resignation today as a member of the State highway commission for the third district. Governor Laffoon, who accepted it, immediately appointed Thomas S. Rhea, of Russellville, to take the post.

In a letter to the Governor, Reed, who was appointed to the commission last spring after Rhea resigned to run for the Democratic gubernatorial nomination, expressed the hope "the highway commission will re-employ me as highway engineer in the third district." Reed had been district engineer prior to his appointment as Rhea's successor.
Rhea resigned last March 29 to become a candidate for governor.

NOTICE

Notice is hereby given that on and after this date, August 28, 1935, I will not be responsible for any debts except those incurred by me.
BALLARD JOHNSON
\$ 20.00

FOR RENT - vacant houses, furnished rooms and apartments. Apply to
A. C. HARLOWE, City Phone 69.

POLITICAL ANNOUNCEMENTS

For County Board of Education
We are authorized to announce:
ROMEY C. DYER
as a candidate for member of the Floyd county board of education at the November election, 1935. Your support and influence will be appreciated.

FOR BOARD OF EDUCATION
Hiram Bailey, Garrett, Ky., and Guy Childers, Martin, Ky., November election 1935. Endorsed by Town Hall and his friends.

FOR RENT - 5 room house, furnished with bath and basement. Reasonable. \$ 31.00. Mrs. S. Nunery

\*BALD? Give Your Scalp a Chance
Jamaica Oil is the winner of the remarkable successful preparation that stimulates and restores the hair to its natural growth. It is a rich and pure natural oil which is not dried. This famous preparation is the most perfect scalp conditioner. It not only brings an abundant supply of blood to the scalp, but also feeds the hair roots and keeps them healthy. It is a hair tonic and a scalp conditioner. It is a hair tonic and a scalp conditioner. It is a hair tonic and a scalp conditioner.

JAPANESE OIL
This advertisement was prepared and approved by a registered physician.

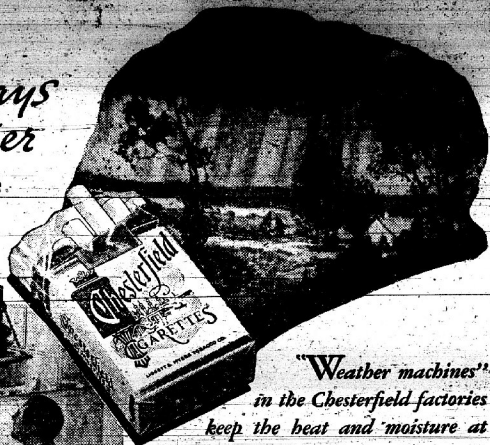
FREE TO STOMACH SUFFERERS
If you suffer from gas, bloating, belching, sour stomach, sick headache, dizziness caused from or in stomach by hyperacidity or faulty diet, write for FREE liberal sample of our MARVELOUS MORCO TREATMENT - FREE.
THE MORCO CO.
Martin, Ky.

DR. R. M. WILHITE
The Oldest Established Chiropractor in the Big Sandy Valley
If you are sick your spine needs to be adjusted. DISEASE is due to restricted nerve currents. The competent CHIROPRACTOR can make you well. Pains about the head, neck, back or limbs; disease of the stomach, heart, lungs, liver, kidneys, bowels etc.; neuritis, rheumatism, lowered vitality, paralysis, indigestion, constipation - all these and many other ailments have been cured through chiropractic.
XRAY AND NEUROCALOMETER SERVICE
PAINTSVILLE, KENTUCKY

At your favorite bar, say -
"Make mine with Schenley's Cream of Kentucky"
Straight Kentucky Whiskey"
In Kentucky, the home of fine whiskey and of good judges of whiskey, Schenley's Cream of Kentucky is head and shoulders above all others. Try this delicious whiskey - the whiskey Kentuckians call "double rich".
This Mark of Merit on every bottle of Schenley's Cream of Kentucky is your absolute assurance of delicious quality and the utmost in value. Schenley's Cream of Kentucky is made in Kentucky by Kentucky distillers the real old Kentucky way. Just try it your way!
FOR A REALLY FINE GIN, TRY SILVER WEDDING DISTILLED GIN

90.15
19.78
19.78
20.25
9.15
30.25
2.22
35.58
26.10
11.22
16.88
10.38
3.50
38.08
8.72
15.29
38.57
38.86
36.94
11.92
11.92
17.08
9.20
37.08
42.29

It's always fair weather where we make Chesterfields



'Weather machines' in the Chesterfield factories keep the heat and moisture at a steady even level...

This control of temperature and humidity helps to retain the full flavor and aroma of the tobaccos you smoke in Chesterfields.

And it has a great deal to do with providing the proper working conditions for the employees who handle the tobaccos and operate the Chesterfield machines.

Mild ripe tobaccos and modern up-to-date factories, with proper control of temperature and humidity help to make Chesterfield...

The cigarette that's MILDER the cigarette that TASTES BETTER



© 1935, LORNEY & MYERS TOBACCO CO.

DIRECT RELIEF TO END IN SIX WEEKS

County and City Officials Told Burden To Be Shifted To Them November 1

Louisville, Ky., Sept. 23 (Spl.)—As time draws near for the end of direct relief in Kentucky and the absorption of all workable relief clients...

mentary units in their new undertaking, George H. Goodman, administrator for the Kentucky Emergency Relief and the Works Progress Administration, has addressed a letter to county judges and mayors of Kentucky in which he says:

'According to our records we are now carrying a number of unemployable relief cases in your county. This means that some of these cases contain a person who can be transferred from direct relief to the Works Progress Administration program now being started in Kentucky.'

'As you know, the KERA program was designed to take care of needy, unemployed people, able and willing to work. As a purely humanitarian measure this organization has been permitted to assist in the care of indigent persons and families in counties and municipalities of Kentucky...

that were not able, under the stress of the depression, to provide care for them. Unquestionably this permission has been imposed upon in many instances. However, a great many helpless people would have suffered severely without the help we have given. It now becomes my duty to advise you that by November 1 we must liquidate the KERA program. Unworkable indigent cases must be returned to the responsibility of the county, the municipality, and the state by that date. By that time all workable cases should be provided care through employment on WPA work projects at a wage which will be sufficient to care for the average family. In unusually large families or where illness or other conditions entail abnormal expenses, two workers may be given employment.

'Please let me know if you are in position to give these workable cases adequate care. We are interested in their welfare and are anxious to help them in any way we can. It may be we can help you financially toward supplying one or more trained welfare workers, who will keep in touch with needy families and as the need develops look after the certification of additional workers to the Works Progress Administration program. This procedure seems to me to be a necessity until such time as Kentucky is prepared to take advantage of the Federal Social Security Act recently signed by the President.'

time as Kentucky is prepared to take advantage of the Federal Social Security Act recently signed by the President.

'I will appreciate a frank statement from you and I know you will agree that whatever program can be set up to safeguard the future of those unworkable persons should be established at the earliest moment.'

According to Mr. Goodman, ample projects, under the Works Administration, have been filed from each county to care for all workables on relief for a period of a year. These projects, Mr. Goodman pointed out, are now in the hands of Washington officials awaiting their approval before they can start.

Mr. Goodman expressed the hope that the bulk of projects on file from Kentucky at Washington would receive consideration and would not tend to hold up the program in the state. He said projects over the state were being started as quickly as approval for them is given.

KOCH'S RADIO SERVICE (Pronounced Koch) Established Five Years in Prestonsburg Expert Service on All Makes Battery or Electric

MAN WANTED FOR Raleigh Route of 800 families. Write today. Rawleigh, Dept. KYH 213 SA, Freeport, Ill.



Over-indulgence in food, drink, or tobacco frequently brings on an over-acid condition which may result in indigestion, heartburn, sour stomach, cold, fatigue, muscular rheumatism or gastric pains. To get rid of the discomfort and correct the acid condition, take ALKA-SELTZER. ALKA-SELTZER contains Acetyl-Salicylate (an analgesic) in combination with vegetable and mineral alkalies. Your druggist sells ALKA-SELTZER by the drink and by the package. BE WISE - ALKALIZE!

Bargain Coach EXCURSION to CINCINNATI

SUNDAY, SEPTEMBER 29 Round Trip \$2.00

Special Train leaves 4:35 a. m. Returning, leaves Cincinnati 7:15 p. m.

BASEBALL Pittsburg vs. Cincinnati Cafeteria Car on Train Good Food at Low Cost

TICKETS NOW ON SALE Consult Ticket Agent for full particulars

CHESAPEAKE and OHIO

Advertisement for Old Quaker Whiskey featuring a bottle, a man in a top hat, and the text 'MEET ME AT YOUR FAVORITE PLACE TODAY' and 'You don't have to be rich to enjoy rich whiskey'.

Advertisement for Western Kentucky Teachers College featuring a dog and the text 'Kentucky Folklore by Doctor William H. D. Western Kentucky Teachers College Bowling Green, Ky.'.

Folk Psychology Incident otherwise puzzling often seem clear when viewed in the light of folk-lore. A case in point is the Floyd Collins disaster. Many another man has lost his life in a cave or in a mine, but somehow no one else has appeared quite so strongly to the folk imagination as did this unknown Kentucky cave explorer. The tragedy applied to all sorts of people, was soon interpreted in several ballads, and within a few years has acquired all the necessary elements to ally it with the deeds of Bonnie Barbara Aiken or of Robin Hood and his merry men. In spite of education people are still of the folk when they fear. For a whole afternoon I rowed around in a boat searching for the body of one of my students who had lost his life while trying to save a young woman from drowning. On the seat in front of me lay the clothes of the young man, which had previously been cast into the turbulent river by some well-meaning person in the hope or belief that they would go down in the spot where the body was to be found. I need hardly say that the boy was not found in this way, but I suspect that the person who tried the experiment will fear comes again in this guise.

Lord condemn him to be spurned by the heel of man? The hawks in our day are a race paying the penalty of a very few species that are predatory. Sometimes one almost despair of uprooting a prejudice against certain things of nature, so long have men unreasonably condemned whole species unheard. Why do certain customs persist? For example, why do people continue to practice charms against disease, death, or the evil eye, or wild animals. In spite of education and science we are still more guided by primitive feelings than by thought. Since all of us are likely to suffer certain ills, there has grown up a body of quackeries and nostrums that stagger belief. The charms of other days, like the asafoetida bag, may not be so plentiful as they were; but patent medicines are enriching their makers because of recurrent ills in humanity and a consequent breakdown of acquired knowledge. Night air is still feared, even though some of the people who pull their windows down at night have gone to the hospitals to have screens. And though most people take the medicine left by the physician or sent from the druggist, other remedies hallowed by memory and usage, are as common as ever. Catnip-tea has never lost its popularity; those who have given it to their children probably have not reasoned that some warm water might have done as well. Civilization is, after all, pretty largely a matter of actions and thoughts that are constant and persistent; when we become passive, we unconsciously fall back on folk thinking and reasoning.

Scientists have always had trouble in getting a proper hearing for certain quadrupeds, birds and plants. Pioneers seem to have regarded all nature as for him or against him. If a thing did not yield immediate assistance, it should be destroyed. The snake, for example, was and is only partially bad - most species the live in America are neutral or even beneficial. The terror inspired by the copperhead or the rattlesnake made all snakes venomous; anyway did not Satan disguise himself in this form, and did not the 6-14-

FOR RENT—4 office rooms, Odd Fellows' building, best office space in town. Reasonable rates. See W. M. DINGUS in this form, and did not the 6-14-

Advertisement for Tyler Hotel: WHEN IN LOUISVILLE Tyler Hotel Third at Jefferson Location Ideal Modern Dining-Room Coffee Shop and Bar RATES: One person from...\$1.50 Two persons from...\$2.50 200 Rooms—175 BATHS—Fireproof GARAGE SERVICE 50c OVERNIGHT

Advertisement for The Christian Science Monitor: YOUR HOME IS YOUR CASTLE Add daily clean, constructive news by reading THE CHRISTIAN SCIENCE MONITOR A Daily Newspaper for the Home It gives all the conservative world news but does not omit crime and scandal. Its interesting feature pages for all the 'Times' of America, Education and Books. Also pages for the Children's Page. Verses editorially and an interpretation of news in the 'March of the Nations' Column are of special interest to students.

Advertisement for E. P. Arnold Funeral Director: E. P. ARNOLD Funeral Director FRANKLIN W. MOORE Undertaker and Embalmer, Assistant ANY HOUR, DAY OR NIGHT, WE STAND READY TO SERVE YOU, EFFICIENTLY AND REASONABLY, IN THE CARE OF YOUR LOVED ONES Ambulance Service Phone 94-W and 94-J, Prestonsburg, Ky.

Vertical text on the right edge of the page, including 'Ky. and West. Railway Express', 'Uncollected Ticket Commission 3 p', 'Diaburements', 'Lackey Gas Co', 'Ky. and West. A. B. Meade', 'Jackie Patton', 'Prestonsburg P. M. C. Sexton', 'Garret Lumber', 'Sandy Valley F. W. T. Hatcher', 'Standard Oil Co', 'Snodgrass Insurance', 'Monroe Wicker', 'Henry Porter', 'Eallett Book Co', 'J. K. McCubbin', 'Homer W. Jones', 'Rex Haven', 'O. H. Stumbo', 'Crockett Watson', 'Dus from Shero', 'Balance June 30', 'Balance per Ba', 'Commission on', 'Interest at 2 per', 'Balance July 1', 'Receipts:', 'Other Income', 'Real and Person', 'Warfield Natural', 'Ky. and West V', 'C. and O. Railw', 'Ky. and W. Va.', 'Uncollected Tick', 'Commission 3 p', 'Diaburements:', 'Ky. and West. V', 'Warfield Natural', 'Eugene Allen', 'Prestonsburg P', 'Dewey Martin', 'Glen and Comp', 'Morrell Supply', 'W. M. Welch M', 'Standard Oil Co', 'Iola Crisp', 'Joseph E. Moor', 'Wiley J. Jones', 'E. W. A. Roles', 'Wiley J. Jones', 'A. B. Meade', 'Inter-t Bank Jo', 'Dug from Sheri', 'Balance June 30', 'Balance per Ba', 'Commission on', 'Interest at 2 per', 'Receipts:', 'Transfer from M', 'Diaburements:', 'Magnus and Cor', 'Due General Pur', 'Balance June 30', 'Balance per Ba', 'Paid out of Gen', 'Balance per Bod', 'Balance July 1', 'Receipts:', 'Real and Person', 'Martin Gas Com', 'Kentucky Expre', 'Ky. and West V', 'Southern Bell Te', 'Ky. and West V', 'C. and O. Railw', 'Warfield Natural', 'Uncollected Tick', 'Commission 3 p', 'Diaburements:', 'Magnus and Cor', 'Martin Gas Com', 'Ky. and West V', 'Eugene Allen', 'A. B. Meade', 'James Crisp', 'Prestonsburg P', 'Ott Frazier', 'Earl Lynch', 'Oliver Elam', 'H. H. Vincent', 'Chad Conlon', 'J. B. Olick', 'George Olick', 'Norris Olick', 'Morrell Supply'

(Continued from page six)

Ky. and West. Va. Gas Company	164.04
Railway Express Agency	21
	1,856.25
Uncollected Tickets	905.01
Commission 3 per cent	40.54

Dibursements:	
Lackey Gas Company	187.09
Ky. and West. Va. Power Company	75.82
A. B. Meade	15.20
Jack Patton	315.00
Prestonsburg Publishing Company	24.25
M. C. Sexton	48.00
Garrett Lumber Company	22.90
Sandy Valley Hardware Co.	12.08
Jonas Collins	12.75
W. T. Hatcher	2.05
Standard Oil Company	4.88
Snodgrass Insurance Agency	108.15
Monroe Wicker	450.00
Henry Porter	18.10
Eallett Book Company	16.87
J. K. McCubbin	5.15
Homer W. Jones	35.00
Box Hayes	35.00
O. H. Stumbo	36.00
Crockett Watson	4.50
Due from Sheriff	2.91
	1,487.96
Balance June 30, 1935	552.22
Balance per Bank Statement	552.22
Commission on Collections at 2 per cent	27.08
Interest at 2 per cent on Average Monthly Bal.	402.88

SCHEDULE J

Floyd County, Kentucky STATEMENT OF MEDOWELL CONSOLIDATED SCHOOL FUND From July 1, 1934 to June 30, 1935

Balance July 1, 1934		109.76
Receipts:		
Real and Personal Tickets—Rate 75	750.00	17.28
Warfield Natural Gas Company	804.80	
Ky. and West Va. Power Co.	345.44	
C. and O. Railway Company	1,234.17	
Ky. and W. Va. Gas Co.	755.44	
	5,860.97	8,220.17
Uncollected Tickets	157.40	8,220.17
Commission 3 per cent	95.70	8,120.47
		8,220.47
Dibursements:		
Ky. and West. Va. Power Company	119.16	
Warfield Natural Gas Company	191.48	
Eugene Allen	11.00	
Prestonsburg Publishing Company	2.00	
Dewey Martin	210.00	
Ginn and Company	4.01	
Morell Supply Company	7.95	
W. M. Welch Manufacturing Company	49.37	
Standard Oil Company	9.78	
Iola Crisp	45.00	
Joseph E. Moore	184.00	
Wiley J. Jones	110.50	
E. W. A. Rolas Company	18.48	
Wiley J. Jones	276.00	
A. B. Meade	19.00	
Interst Bank Josephine No. 244	80.26	
Due from Sheriff	135.10	1,448.93
		1,804.56
Balance June 30, 1935		1,804.55
Balance per Bank Statement		1,804.55
Commission on Collections at 2 per cent		64.48
Interest at 2 per cent on Average Monthly Bal.	904.88	18.09

SCHEDULE K

Floyd County, Kentucky STATEMENT OF MARTIN SINKING FUND From July 1, 1934 to June 30, 1935

Receipts:		
Transfer from Martin Cons. School Fund		1,000.00
Dibursements:		
Magnus and Company (Interest on Bonds)	860.00	
Due General Fund Interest Paid	360.	720.00
Balance June 30, 1935		280.00
Balance per Bank Statement		540.00
Paid out of General Fund		580.00
Balance per Books		280.00

SCHEDULE L-1

Floyd County, Kentucky STATEMENT OF MARTIN CONSOLIDATED SCHOOL FUND From July 1, 1934 to June 30, 1935

Balance July 1, 1934		1,016.41
Receipts:		
Real and Personal Tickets—Rate 75	1,168.80	
Martin Gas Company	112.60	
Kentucky Express Agency	1.49	
Ky. and West Va. Power Company	514.84	
Southern Bell Telephone Company	15.64	
Ky. and West Va. Gas Company	185.20	
C. and O. Railway Company	1,792.87	
Warfield Natural Gas Company	490.45	
	4,281.79	4,086.76
Uncollected Tickets	145.03	4,086.76
Commission 3 per cent	122.60	3,964.16
		4,980.57
Dibursements:		
Magnus and Company	360.00	
Martin Gas Company	206.04	
Ky. and West Va. Power Company	216.83	
Eugene Allen	11.00	
Sam Payne	26.60	
A. B. Meade	50.00	
James Crisp	2.00	
Prestonsburg Publishing Company	8.75	
Oit Frazier	3.75	
Earl Lynch	3.75	
Oliver Elam	680.05	
H. H. Vincent	6.00	
Chad Coalton	322.20	
J. B. Olek	7.20	
George Chick	37.80	
Norris Chick	1.80	
Morell Supply Company	1.80	

Sandy Valley Hardware Company	130.07
Snodgrass Insurance Agency	200.00
Ky. Chemical Company	3.62
K. S. Vanhose and Company	25.87
Chelmer E. Frazier	296.00
Henry Porter and Company	5.15
Transfer to Sinking Fund	1,000.00
Due from Sheriff	268.85
Balance June 30, 1935	1,134.14
Balance per Bank Statement	1,141.77
Check No. 557, Ky. and West Va. Power Company outstanding	7.63
Balance per Books	1,134.14
Commission on collections at 2 per cent	81.73
Interest at 2 per cent on Average Monthly Bal.	856.50

SCHEDULE L-2

Floyd County, Kentucky STATEMENT OF MAYTOWN CONSOLIDATED SCHOOL FUND From July 1, 1934 to June 30, 1935

Balance July 1, 1934		1,295.00
Receipts:		
Real and Personal Tickets—Rate 50	917.92	
Warfield Natural Gas Co.	3,346.27	
Southern Bell Telephone Company	3.05	
Ky. and West Va. Power Company	83.05	
C. and O. Railway Company	1,209.32	
Inland Gas Company	47.17	
Ky. and West. Va. Gas Company	2,191.17	
	7,752.95	7,549.38
Uncollected Tickets	208.57	7,549.38
Commission 3 per cent	226.48	7,322.90
		8,617.90
Dibursements:		
Josh Lafferty	25.00	
Ky. and West Va. Gas Company	2.40	
Ky. and West Va. Power Company	255.55	
G. A. May	36.00	
A. T. Winters	4.00	
Fred Kelley	15.00	
B. A. Meade	6.00	
Eugene Allen	60.00	
R. E. Marshall	31.16	
A. B. Meade	12.50	
Snodgrass Insurance Agency	411.32	
W. M. Messer	155.00	
W. H. Horn	292.70	
Vanhose Lumber Company	2.00	
Prestonsburg Publishing Company	131.97	
Langley Supply Company	125.85	
C. and O. Railway Company	1.00	
Morell Supply Company	.30	
Harrison Borders	25.00	
Sandy Valley Hardware Company	11.37	
Elizabeth Baker	68.80	
Big Sandy Hardware Company	45.00	
Fred Kelley	3.00	
Dixie Chemical Company	9.35	
Henry Porter	16.38	
Olle Frazier	40.00	
B. J. Campbell	100.00	
C. and O. Railway Company	8.55	
Mayfair Agency	9.07	
J. E. McCubbin	5.20	
Forward	2,164.48	8,617.90

SCHEDULE M-1

Floyd County, Kentucky STATEMENT OF MAYTOWN UNCONSOLIDATED SCHOOL FUND From July 1, 1934 to June 30, 1935

Forward	2,164.48	8,617.90
Porwano Adkins	70.00	
Janie R. Combs	180.00	
Henry Porter	7.45	
Hallie B. Hall	78.20	
Amey May Begley	62.15	
Fred E. Meier	73.40	
Town Hall	120.00	
B. F. Branham	34.77	
Snodgrass Insurance Agency	12.50	
Due from Sheriff	68.53	2,866.48
Balance June 30, 1935		5,761.42
Balance per Bank Statement		5,603.92
Check No. 473 Outstanding	12.50	
Check No. 444 Outstanding	40.00	52.50
Balance per Books		5,761.42
Commission on Collections at 2 per cent		180.99
Interest at 2 per cent on Average Monthly Bal.		68.80

SCHEDULE M-2

Floyd County, Kentucky STATEMENT OF WAYLAND CONSOLIDATED SCHOOL FUND From July 1, 1934 to June 30, 1935

Tax Payer:		
Balance July 1, 1934		158.31
Receipts:		
United Mine Workers	11.00	
Real and Personal Tickets—Rate 50	1,184.28	
Wayland Natural Gas Co.	29.64	
Southern Bell Telephone Co.	19.56	
Ky. and West Va. Power Co.	380.78	
C. and O. Railway Company	39.32	
Inland Gas Corporation	566.02	
Ky. and West Va. Gas Company	.77	
Railway Express Agency		2,631.90
Uncollected Tickets	83.37	2,648.53
Commission 3 per cent	76.46	2,472.07
		2,641.38
Dibursements:		
Eugene Allen	6.00	
A. B. Meade	19.95	
Sam Payne	315.00	
Prestonsburg Publishing Company	2.00	
Noah Hopper	13.11	
Emmons-Hawkins Hardware Co.	6.39	
Jack Hollis	25.80	
Garrett Lumber Co.	2.90	
G. C. Sturgill	68.20	
Elkhorn Coal Corp.	100.00	
Standard Oil Company	9.20	
Hawk Moore	20.00	
George L. Moore	192.00	

SCHEDULE M-2

Floyd County, Kentucky STATEMENT OF WAYLAND CONSOLIDATED SCHOOL FUND From July 1, 1934 to June 30, 1935

Tax Payer:		
Balance July 1, 1934		158.31
Receipts:		
United Mine Workers	11.00	
Real and Personal Tickets—Rate 50	1,184.28	
Wayland Natural Gas Co.	29.64	
Southern Bell Telephone Co.	19.56	
Ky. and West Va. Power Co.	380.78	
C. and O. Railway Company	39.32	
Inland Gas Corporation	566.02	
Ky. and West Va. Gas Company	.77	
Railway Express Agency		2,631.90
Uncollected Tickets	83.37	2,648.53
Commission 3 per cent	76.46	2,472.07
		2,641.38
Dibursements:		
Eugene Allen	6.00	
A. B. Meade	19.95	
Sam Payne	315.00	
Prestonsburg Publishing Company	2.00	
Noah Hopper	13.11	
Emmons-Hawkins Hardware Co.	6.39	
Jack Hollis	25.80	
Garrett Lumber Co.	2.90	
G. C. Sturgill	68.20	
Elkhorn Coal Corp.	100.00	
Standard Oil Company	9.20	
Hawk Moore	20.00	
George L. Moore	192.00	

Continued on page eight



(Continued from page seven)

Nelle Schellen	67.00
George Powell	37.80
Interest to Bank	38.50
Eikhorn Coal	24.07
Due from Sher	71.25
Balance June	1,033.72
Balance per Statement	1,607.66
Check Exhonor	1,638.12
Check Exhonor	6.39
Balance per Statement	24.07
Commission on Bonds at 2 per cent	1,607.66
Interest on 2 per cent Average Monthly Bal.	520.02

Net Indebtedness, July 1, 1934	178,894.65
Indebtedness Incurred Fiscal Year	221,005.80
Indebtedness Paid off Fiscal Year	394,900.49
Indebtedness Paid off Fiscal Year	269,510.71
Net Indebtedness June 30, 1935	135,389.78
Indebtedness June 30, 1935:	
Accounts Payable	11,382.22
Warrants Outstanding	81,435.59
Bonds	121,000.00
Bank Balance	48,088.08
Sinking Fund Balance	340.00
Net Indebtedness June 30, 1935	48,428.08
Reduction of Net Indebtedness	135,389.78

**SCHEDULE N**  
Floyd County, Kentucky  
OF WHEELWRIGHT CONSOLIDATED SCHOOL FUND  
From July 1, 1934 to June 30, 1935

Tax Payor:		
Balance July		22.26
Receipts:		
Real and Personal Property	2,246.96	
Ky. and West. Ry. Co.	25.78	
Ky. and West. Ry. Co.	783.83	
Railway Express	108.54	
Uncollected	83	
Commission on Bonds at 2 per cent	3,165.94	
Due Sheriff (Statement)	99.05	3,066.89
Disbursements:		
A. B. Meade	2.66	
Protonburg Company	32.50	
James W. Wray	358.88	
Standard Oil	6.65	
Frank Jauch	167.75	
T. H. Jones	60.00	
Donn Hair	223.00	
Martin Gas Co.	78.20	
Interest Bank	9.33	1,088.47
Balance June		1,999.85
Balance per Statement		1,999.85
Commission on Bonds at 2 per cent		61.34
Interest on 2 per cent Average Monthly Bal.	665.75	13.31

**SCHEDULE O**  
Floyd County, Kentucky  
CERTIFICATION OF CORPORATIONS  
From July 1, 1934 to June 30, 1935

American Tel. Co.	1,516.00
American Ry. Co.	12,373.00
C. and O. Ry. Co.	2,127.00
Inland Gas Co.	4,983,409.00
Federal Public Ry. and West. Ky. Gas Trans. Co.	847,818.00
Ky. and West. Southern Ry. Co.	1,989.00
Martin Gas Co.	1,660,808.00
Southern Ry. Co.	9,940.00
Spark, R. & S. Co.	4,452,179.00
Western Union	15,000.00
Western Union	43,884.00
Western Union	8,667.00
Western Union	2,687,907.00
Western Union	9,127.00
Total	14,186,739.00

**SCHEDULE P**  
Floyd County, Kentucky  
RECONCILIATION OF BANK BALANCES  
June 30, 1935

General Fund	23,721.74
Teachers' Fund	8,009.92
Auxiliary	848.30
Revs. Layne	235.68
Boys	880.19
Drift	1,098.01
Dwight	419.76
C. Pratt	100.58
Parish-Lane	211.92
Lacey	552.22
M. D. Bell	1,804.55
Martin	1,141.77
Wayland	5,803.92
Wayland	1,638.12
Wayland	1,989.85
Wayland	4.00
Wayland	360.00
Wayland	48,730.33
Wayland	14.50
Wayland	12.00
Wayland	2.00
Wayland	20.50
Wayland	2.25
Wayland	.96
Wayland	1.40
Wayland	32.50
Wayland	55.50
Wayland	47.35
Wayland	40.00
Wayland	12.50
Wayland	6.39
Wayland	24.07
Wayland	3.50
Wayland	66.00
Wayland	75.00
Wayland	111.00
Wayland	95.25
Wayland	6.01
Wayland	7.63
Wayland	642.30
Wayland	45,088.93

**SCHEDULE Q**  
Floyd County, Kentucky  
EDUCATION—RECAPITULATION OF INDEBTEDNESS

Bank Balance	183,184.82
Accounts Payable	7,150.06
Warrants Outstanding	50,034.68
Bonds	126,000.00
Total	9,289.93

**SCHEDULE R**  
Floyd Co., Kentucky, Board of Education  
BONDED INDEBTEDNESS  
June 30, 1935

Bonds:	Year	Due May 1
14 to 17 inclusive	1936	4,000.00
18 to 21 inclusive	1937	4,000.00
22 to 26 inclusive	1938	5,000.00
27 to 31 inclusive	1939	5,000.00
32 to 37 inclusive	1940	6,000.00
38 to 44 inclusive	1941	7,000.00
45 to 51 inclusive	1942	7,000.00
52 to 58 inclusive	1943	8,000.00
59 to 66 inclusive	1944	8,000.00
67 to 74 inclusive	1945	8,000.00
75 to 82 inclusive	1946	8,000.00
83 to 91 inclusive	1947	9,000.00
92 to 100 inclusive	1948	9,000.00
Total		87,000.00
Bonds dated May 1, 1930, Interest 6 per cent		87,000.00
Interest Payable May 1 and Nov. 1		
Interest and Principal Payable at Hanover Bank and Trust Co., New York City		
Another Consolidated School District		
Bonds 1 to 9 Inclusive Dated Jan. 14, 1925		9,000.00
Bonds Due January 1, 1936, Interest 6 percent, Payable Jan. 1 and July 1		
Payable at Fifth-Third National Bank, Cincinnati, Ohio		
Martin Consolidated School District		
Bond No. 1 due July 1, 1935		1,000.00
Bond No. 2 due July 1, 1937		1,000.00
Bond No. 3 due July 1, 1937		1,000.00
Bond No. 4 due July 1, 1938		1,000.00
Bond No. 5 due July 1, 1939		1,000.00
Bond No. 6 due July 1, 1940		1,000.00
Bond No. 7 due July 1, 1941		1,000.00
Bond No. 8 due July 1, 1942		1,000.00
Bond No. 9 due July 1, 1943		1,000.00
Bond No. 10 due July 1, 1944		1,000.00
Bond No. 11 due July 1, 1945		1,000.00
Bond No. 12 due July 1, 1946		1,000.00
Total		12,000.00
Dated July 1, 1929, Interest 6 per cent, Payable July 1 and Jan. 1		
Payable at Fifth-Third Union Trust Co., Cincinnati, Ohio		
Wheelwright Consolidated School District		
Bonds Voted Warrants Issued Interest 5 per cent		
Warrants 3 to 15 inclusive to Inland Steel Co.		13,000.00
Payable 1,000.00 annually on April 6th years 1936 to 1948 inclusive		

**SCHEDULE S**  
Floyd County, Ky., Board of Education  
WARRANTS OUTSTANDING

No.	Name	Date	Amount
98	Stewart, Powers and Carter	Dec. 13, 1929	4,701.69
100	Gearheart and Harris	June 20, 1930	3,025.97
101	G. E. Hale	June 21, 1930	8,579.90
111	W. H. Richardson	Aug. 8, 1930	777.77
112	Gearheart and Harris	Aug. 8, 1930	1,500.00
125	G. M. Hale	Aug. 8, 1931	500.00
132	Theodore Kuntz and Co.	June 12, 1931	3,679.27
137	Theodore Kuntz and Co.	Apr. 11, 1932	1,193.20
173	Sandy Valley Hdwe. Co.	July 7, 1932	2,000.00
180	F. A. Maggard	Aug. 18, 1932	436.64
181	Lucille Kuykendall	May 10, 1933	416.00
188	Gomer Sturgill	May 18, 1933	165.10
191	West Va. Seating Co.	June 5, 1933	350.00
193	Claud C. Farley	June 5, 1933	1,556.50
195	Sandy Valley Hdwe. Co.	June 5, 1933	1,008.00
199	May Hale	June 5, 1933	415.50
202	Carl Hatcher	July 3, 1933	347.47
210	G. C. Johnson	July 3, 1933	193.30
215	Beatrice Collins	July 3, 1933	162.70
218	Stewart, Powers and Carter	Aug. 21, 1933	250.00
225	Graydon Akers	Sept. 26, 1933	67.85
227	Stewart, Powers and Carter	Oct. 7, 1933	1,668.62
232	Stewart, Powers and Carter	Oct. 7, 1933	69.50
233	Stewart, Powers and Carter	Oct. 7, 1933	1,328.00
234	Stewart, Powers and Carter	Oct. 7, 1933	500.00
239	Martin Lumber Co.	Nov. 20, 1933	500.00
237	Clayborn Stephens	Oct. 1933	609.74
240	F. S. VanHoose and Co.	Dec. 9, 1933	250.00
241	R. S. Hayes	No Sub	2,300.00
241	H. F. Patton	Dec. 23, 1933	686.70
243	West Va. Seating Co.	Dec. 9, 1933	95.28
242	Sandy Valley Hdwe. Co.	Jan. 13, 1934	1,147.77
246	West Va. Seating Co.	Dec. 9, 1933	1,286.46
248	Cumberland Ins. Agency	Jan. 16, 1934	574.33
244	Esco Hunter	Dec. 18, 1933	1,000.00
244	A. J. Archer	Apr. 7, 1934	1,304.51
246	Justice Lumber Co.	Apr. 9, 1933	192.00
247	Palmer Hall	Apr. 16, 1934	1,198.75
247	Justice Lumber Co.	May 12, 1934	645.15
246	Justice Lumber Co.	Feb. 13, 1934	320.00
11	James Weaver	Feb. 23, 1934	549.50
12	C. H. Farley	Mar. 4, 1935	1,500.00
13	Carl Hatcher	Mar. 18, 1935	100.12
14	Ben Williamson and Co.	Mar. 28, 1935	317.65
15	Harcourt and Co.	Apr. 1, 1935	242.00
16	A. A. Flanagan and Co.	Apr. 15, 1935	383.95
17	Inland Steel Co.	Apr. 15, 1935	311.69
18	Ishmael Triplett	Apr. 29, 1935	200.00
18	Ishmael Triplett	June 14, 1935	770.92
Total			200.00

**SCHEDULE T**

Please turn to page two