

Women's Vote...

From Suffrage To Gender Gap

By LINDA ST. THOMAS
Smithsonian News Service

When women "got the vote" in 1920, some people predicted—and feared—the end of femininity and the family and the beginning of unneeded social reform and elections determined by an unpredictable but solid bloc of women's votes.

The predictions did not come true. In fact, the elections following passage of the suffrage amendment were anticlimactic compared to the years of intense effort to win the vote. In the 1924 election, only one-third of the women eligible to vote cast their ballots. As late as 1960, the voter turnout rate for women was still 11 percentage points behind the rate for men. Moreover, it appeared that the way women voted was indistinguishable from the way men voted.

Today, 65 years after women began voting (the 19th Amendment to the Constitution became law on Aug. 26, 1920), political historians talk matter-of-factly about gender gaps, women's issues, the feminist vote and the impact of a female vice presidential candidate on an election. In 1980, for the first time in history, the proportion of women who reported voting (59.4 percent) was higher than that of men (59.1 percent).

When the 1980 and 1984 election returns were examined, pollsters took note of the long-awaited difference in men's and women's votes in presidential, state and local races and labeled that difference the "gender gap."

The term may be new, but the phenomenon has been developing for some time, says Marjorie Lansing, co-author of *Women and Politics: The Visible Majority*. Within the past decade or so, Lansing says, the women's movement has been accompanied by the "growth of an invisible majority (formed by women) in the electorate which has coalesced at times to influence public policy."

Ethel Klein, a political scientist at Columbia University and author of *Gender Politics*, says that "even when men and women vote for the same candidate, a women's vote exists so long as women vote for that candidate for different reasons." If, for example, women vote for a Democrat because of the party's position on social services or defense spending while men vote for the same candidate because of unemployment and labor issues, Klein contends, there is "a women's vote irrespective of the fact that both men and women voted for the Democrat."

In several 1984 state elections the gender gap was more pronounced than in the landslide presidential election, according to data compiled by the Center for the American Woman and Politics at Rutgers University. Women's participation, in fact, determined the outcome of races in Illinois, Michigan, Massachusetts and Iowa. (Since ballots are anonymous, information on how men and women vote comes from exit poll interviews and opinion surveys conducted by major national news organizations.)

The journey to the gender gap was long and difficult. Officially, it began with an 1848 Seneca Falls (N.Y.) convention which resolved "that it is the duty of the women of this country to secure for themselves their sacred right to the elective franchise." But women's interest and involvement in elections goes back to the first presidential campaigns, when women worked behind the scenes, organizing political meetings and luncheons, making campaign items and attending rallies.

Many mementoes of these early campaigns, as well as treasured suffrage artifacts, are collected, studied and exhibited in the Smithsonian's National Museum of American History in Washington, D.C.

Some 19th-century election objects were made by women and others were aimed at women, but all had a distinct "home" appeal—sewing boxes, ceramic tableware, quilts and pendants. The thinking at the time was that "women would influence the votes of their husbands and sons even though the women themselves could not go to the polls," Edith Mayo, political history curator at the museum, says. "Ironically, political activities and party affiliations were considered family affairs."

After the first 15 presidential elections, some women were ready to progress from influencing male voters to voting themselves. Thus began the decades-long suffrage movement in America. A tour of the museum's "We the People" exhibition gives a glimpse of that struggle: the table on which the Seneca Falls "Declaration of Sentiments" was written; the desk used by suffragist Susan B. Anthony who devoted 54 years to the cause; picketers; banners; parade posters and sashes; fans ("Keep Cool and Raise a Breeze for Suffrage") and a Washington, D.C., jail key to the cells where suffragist demonstrators were imprisoned in 1917.

Organized efforts to secure the vote for women began in 1867 with a state referendum in Kansas. It failed. But in 1869, Wyoming became the first state to enfranchise women and two national suffrage associations were formed, later merging under President Susan B. Anthony to become the National American Woman's Suffrage Association.

Universal suffrage, many women hoped, would become a reality through victory state by state. And so, according to records kept by suffrage leader Carrie Chapman Catt, there were 47 campaigns to convince state constitutional conventions to write suffrage into their constitutions, 277 campaigns to adopt suffrage in state party platforms and 480 efforts to ask state legislatures to submit suffrage amendments to their voters. By 1913, nine states, all west of



Smithsonian News Service Photos courtesy of the National Museum of American History

In January 1917, suffragists were the first group to use silent White House pickets as a form of protest. Later that year, when onlookers reacted violently to the words on the suffrage banners, it was the women who were arrested and sentenced to jail terms.

the Mississippi, had enfranchised women.

Confronted in 1916 with seemingly endless stalemate and questionable vote recounts in some states, historian Eleanor Flexner explains in her book, *Century of Struggle*, "the eyes of more and more suffragists began turning to Washington, where in the nation's capital, a new suffrage venture was under way."

That year, 5,000 NAWSA members lobbied the Republican Convention to get suffrage on the platform. Meanwhile, suffragists continued to "work on" Congress, although interest in the federal suffrage amendment was at an all-time low, Flexner says.

The opposition that confronted suffragists on both state and national fronts was formidable: political parties that could not be sure of winning if women were enfranchised, big-city political machines suspicious of women's desires to "clean up" politics, brewers and liquor lobbies concerned that women voters would support prohibition, wealthy "antis" (as suffrage opponents were called) who argued that voting would place a burden on women whose place was in the home, and Southern politicians who did not want newly-enfranchised women calling attention to their racially discriminatory voting policies. And there was the psychological barrier, Mayo adds, of a society "based on women in private rather than public roles."

Despite the obstacles, the movement steadily gained ground. NAWSA launched an aggressive new strategy (Mrs. Catt's "Winning Plan"), the role of women changed as millions entered the work force during World War I and, gradually, both men and women came to believe in the equity of a democracy which allowed all citizens to vote.

In addition, suffrage activities were

becoming more visible to the public. Newspapers of the day were saturated with suffrage stories. Parades, conventions, auto pilgrimages and pickets were organized by both factions of the movement—the mainstream NAWSA and the National Woman's Party, an activist group headed by Alice Paul, a social worker and suffragist who had been trained in the militant British women's movement.

In 1917, the first suffrage pickets, organized by the Woman's Party, stood silently outside the White House gates with banners asking Woodrow Wilson, "Mr. President, What Will You Do For Woman Suffrage?" It was the first time any group had picketed the White House, and crowd reactions ranged from curiosity to sympathy. However, as the nation entered World War I and as the suffragists' signs grew bolder and were perceived as unpatriotic, onlookers became violent. Although the women were not the perpetrators of this violence, they were the ones who were arrested—and jailed. By year's end, 97 women were serving terms of up to six months. The charge: obstructing sidewalk traffic.

By 1918, 11 states, including New York which was crucial to the movement's success, had granted "full suffrage" (as opposed to presidential suffrage). In May 1919, Congress passed the suffrage amendment and it was then ratified by the states. In August 1920, the amendment became law, 26 million American women became voters and the NAWSA was renamed the League of Women Voters.

Thus ended a 72-year effort and began a new women's battle, as Carrie Chapman Catt put it, for entry through the "locked door" of political parties. "If you really want your vote to count," Catt told suffragists in 1920, "make your way there."

To Open Hiking Season

The Big Sandy Hiking Association of Prestonsburg Community College will hold its first walk Sunday, Sept. 8 at 2 p.m. Hikers will meet at the main entrance of May Lodge, Jenny Wiley State Park, and walk along the Lake Trail and the Moss Trail. Future plans will be discussed. Children under 13 must be accompanied by an adult. For more information contact Tom Matijasac (phone 886-3863, ext. 246). The public is welcome.

STORAGE • STORAGE • STORAGE

We have storage units for rent

9x10 9x20 18x20

High and dry top security easy access

contact: MULTI-STORAGE 886-1896

9-4-21-pd

With direct deposit, you don't gamble against bad luck, theft, loss, or destruction of your government check.



Not just social security, but black lung, veterans retirement, railroad retirement and civil service retirement, just to name a few of them.

Remember, if you're 62 and retired, First Commonwealth checking is free of required balance charges.

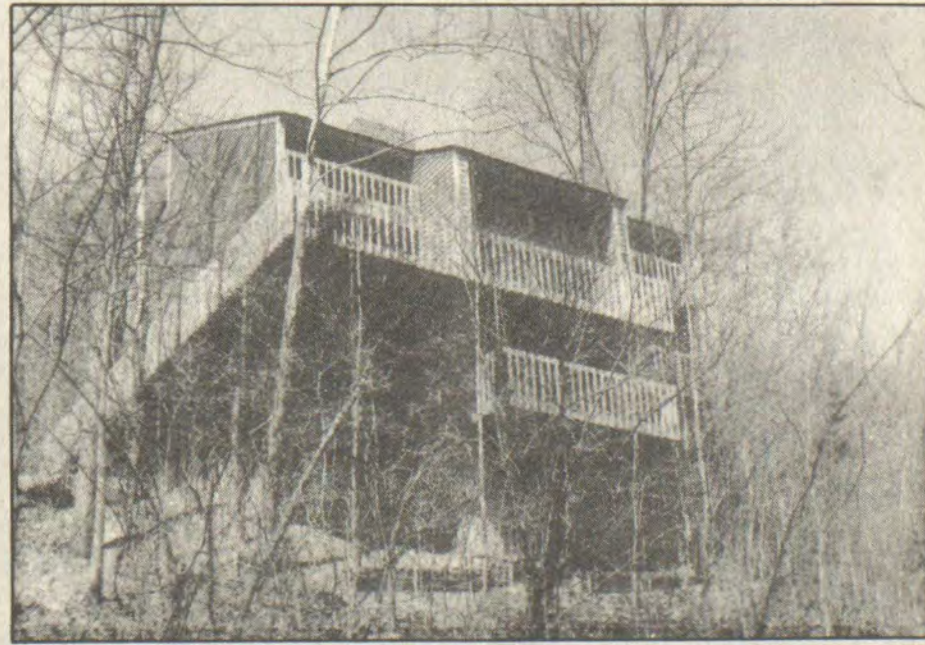
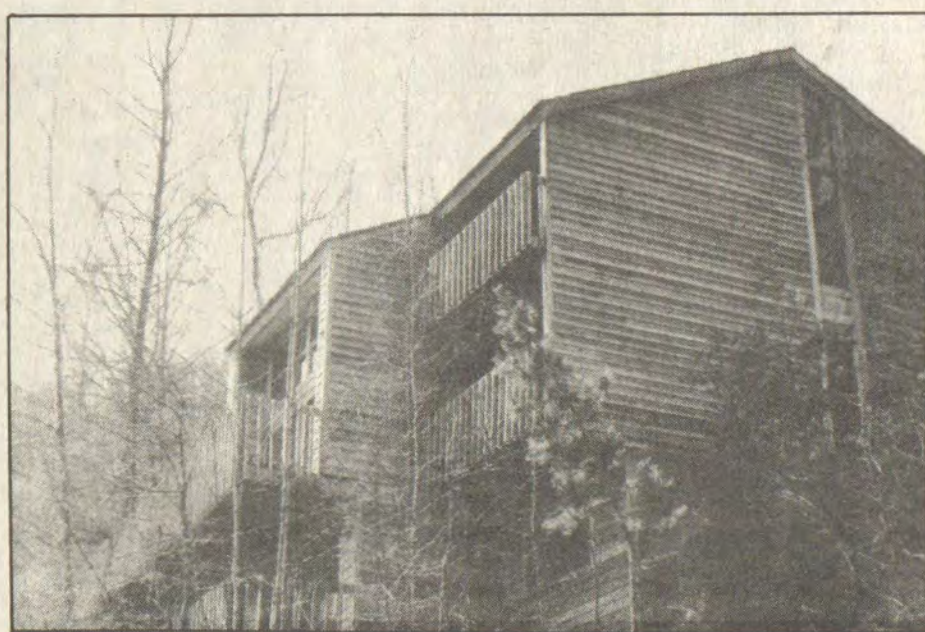
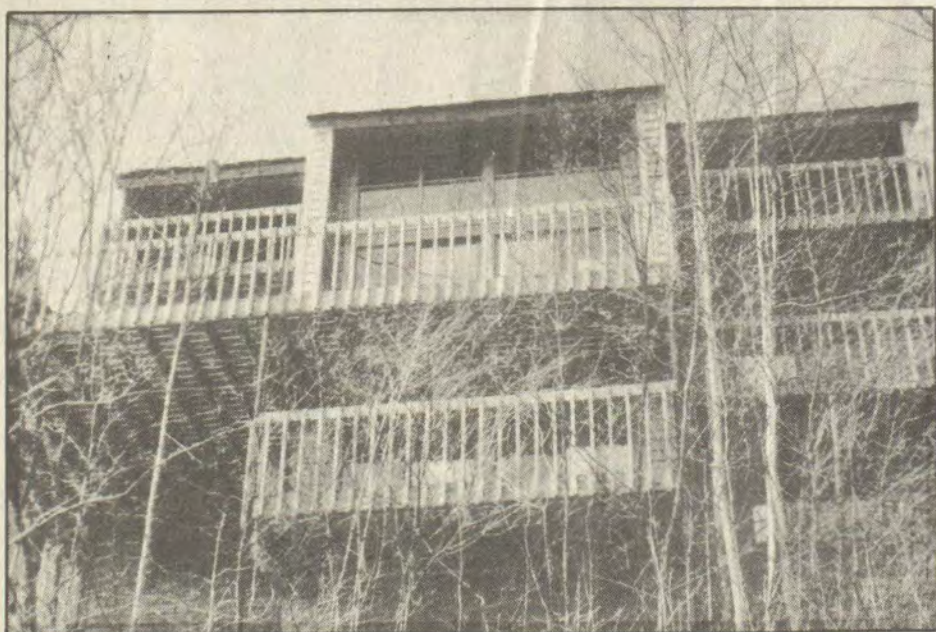
First Commonwealth Bank



Member FDIC

Martin • Betsy Layne • Two Locations In Prestonsburg

FOR SALE BY OWNER



LAKE VIEW VILLAGE, LAKE ROAD—2,500 plus sq. ft. with 10 rooms, 3 full size baths, 2 fireplaces, 3 to 4 bedrooms, game room or family room, office or library with built-in wall safe, dining room, kitchen with built-in cabinets furnished with all major appliances, laundry room with full size heavy duty washer and dryer. Other features too numerous to mention.

Phone 886-6673 or 886-8168

9-4-11

NOTICE OF HEARING

Notice is hereby given that a hearing will be held on the 5th day of September, 1985 at the hour of 1 p.m. in the Conference Room of the Floyd County Annex, Prestonsburg, Kentucky. The purpose of this hearing is to determine if Joe Banks, a resident of Wayland, Ky., should receive an entertainment license. All interested parties should be present.
 ARNOLD TURNER, Jr.,
 Floyd County Attorney

1t.

Student Art Exhibit Held



The annual Floyd County Art Exhibit was held recently at Allen Central High School. The exhibit will be held each year to allow all students in Floyd county schools to exhibit their work and become involved with art classes throughout the county.

Some areas were unable to participate this year, due to the lack of time available, but it is hoped everyone will have the opportunity to exhibit in the next show.

On the day set aside for student visitations, Johnny Stumbo brought his McDowell art classes to observe the exhibit. These students were given a tour of the art classes at Allen Central and some other areas of the building.

The classes of Mrs. Caralita O'Quinn at Allen Central were also involved in setting up the exhibit.

A more extensive program in the future is planned.

EMPLOYMENT OPPORTUNITY

Civil or mining engineers. Experience in permitting.

Call

BOCOOK ENGINEERING, Inc.
 (606) 789-5961

9-14-85

INVITATION TO BID

The Carl D. Perkins Job Corps Center is accepting bids for professional M.D. services. The proposal will include services one day a week with a contract period of one year. Additional information may be obtained by contacting Mr. Paul Holbrook, Manager of Administration, at (606) 886-1037. The bid closing date is September 23, 1985 at 2:30 P.M. Singer Co. is an Equal Opportunity Employer.

9-4-85

INVITATION TO BID

The Carl D. Perkins Job Corps Center is accepting bids for professional Dentist services. The proposal will include services one day a week with a contract period of one year. Additional information may be obtained by contacting Mr. Paul Holbrook, Manager of Administration, at (606) 886-1037. The bid closing date is September 23, 1985, at 2:30 P.M. Singer Co. is an Equal Opportunity Employer.

9-3-85

INVITATION TO BID

The Carl D. Perkins Job Corps Center is accepting bids for professional Mental Health Consultant services. The proposal will include services one day a week with a contract period of one year. Additional information may be obtained by contacting Mr. Paul Holbrook, Manager of Administration, at (606) 886-1037. The bid closing date is September 23, 1985, at 2:30 P.M. Singer Co. is an Equal Opportunity Employer.

9-3-85

Thirty-Two Give Blood During McDowell Drive

Thirty-two persons donated blood at the McDowell Appalachian Regional Hospital. The drive was sponsored by Central Kentucky Blood Center and the McDowell ARH.

The following dates have been scheduled for upcoming blood drives: October 21, Betsy Layne High School gym; October 23, Allen Central High School; October 30, Our Lady of the Way Hospital.

To learn more about McDowell ARH's blood program, call Mary Anderson or Don Damron at 606-377-2411. The following people took time to try to share their good health by donating blood at the McDowell ARH blood drive:

Mary Anderson, Sue Paek, A.C. Collins, Donna Thomas, Debbie Shelton, Marcella Martin, Donald Parker, Gilbert Shelton, Tonia Francis, Mary Poole, James Goines, Phyllis Martin, Sandra Gates, Sandra McKenzie, Vernal Turner, Deborah Carter, Sandra Akers, Thomas Meade, Jennifer Patton, Alice Shelton, Dennis Harris, John Floyd, Kathy Mullins, Anita Little, Sharon Hall, Roland Price, Brenda Shelton, Melba Mathews, Robert Carter, Brenda Kidd, Janet Horn, Betty Tackett, Amelia Salyer, Terry Mullins, Georgia Kidd, Lola Mosley, Dixie Bryant, Josephine Akers, Mark Henson.

Leadership Kentucky To Tour Coal Mine

Leadership Kentucky, a statewide leadership development program sponsored by the Kentucky Chamber of Commerce, will be touring Martin County Coal Company's deep and strip mines tomorrow (Thursday). The tour has been arranged by Secretary of Energy George E. Evans.

Leadership Kentucky meets monthly to address a statewide issue. The class, a cross-section of leaders from throughout the state, will be meeting at Jenny Wiley State Park over the weekend to focus on Kentucky's Education.

The purpose of the program is to inform those in leadership positions of statewide critical issues and build bridges across the Commonwealth.

Prepared Childbirth

A Prepared Childbirth class will begin Sept. 4 at 7 p.m. at Prestonsburg Community College. The class is aimed at those expectant mothers and their support person with October due dates. The purpose of the class is to prepare these persons for their upcoming labor and deliveries. To register, call Vikki McGuire at 886-3863.

Pick 'n Pay Shoes

SALE.
 1/3 off women's new sporty styles for fall.

\$10.00
 your choice Reg. \$14.97

Genuine suede

Genuine suede

Collection of fashion denim shoulderbags...\$2.00 off

Women's bobby socks... 3 pair pkg. for \$3.00

U.S. 23 North
Nears Sears Prestonsburg

Sale prices good thru Sun. MasterCard, Visa or Choice. Open evenings & open Sun. 1-6pm.



Let's Talk!

About Your Business.

If you're in business, then you know the importance of having a financial institution that can see more than the blueprint and projections on paper.

You want a financial institution that can work with you in making those dreams come true.

At Citizens National Bank we've helped many businesses, small and large, to grow and prosper over the last 75 years by simply working beside them and not over them.

If your business is in a growth stage, and you want to expand inventory, build a new building, or lease some equipment, or if you're just starting out (we have Small Business Association loans), stop in at Citizens National Bank and see Denny Dorton or any of our commercial loan officers.

You'll find Citizens National Bank always willing to listen to your plans. Interested enough to invite you in and say...

Let's Talk!

Citizens National Bank

COME TO THE FLOYD COUNTY EDUCATION FORUM, INC. COMMUNITY MEETING



TUESDAY
 SEPTEMBER 10, 1985 7:00 P.M.
 PRESTONSBURG ELEMENTARY SCHOOL

YOUR SCHOOLS NEED YOU...

TO KNOW...

PANEL

How will Floyd County Schools be affected by the Legislative Special Session?

Gregory Stumbo
 State Representative

How will Floyd County Schools be affected by Kentucky State Board decisions?

Robert Spillman
 Ky. Dept. of Education

There will be an open question and answer opportunity.

PLEASE COME!!!

9-4-11-pd.

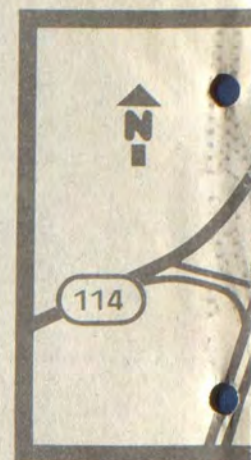
Pantsville's Oldest Bank, Pantsville, KY 41240, Phone 789-4001

Main Office Downtown
 Broadway Motor Bank
 Mayo Plaza Office
 Family Banking Center at 10th and Jefferson

Village Plaza Branch
 Richmond Village
 24-Hour Tellers

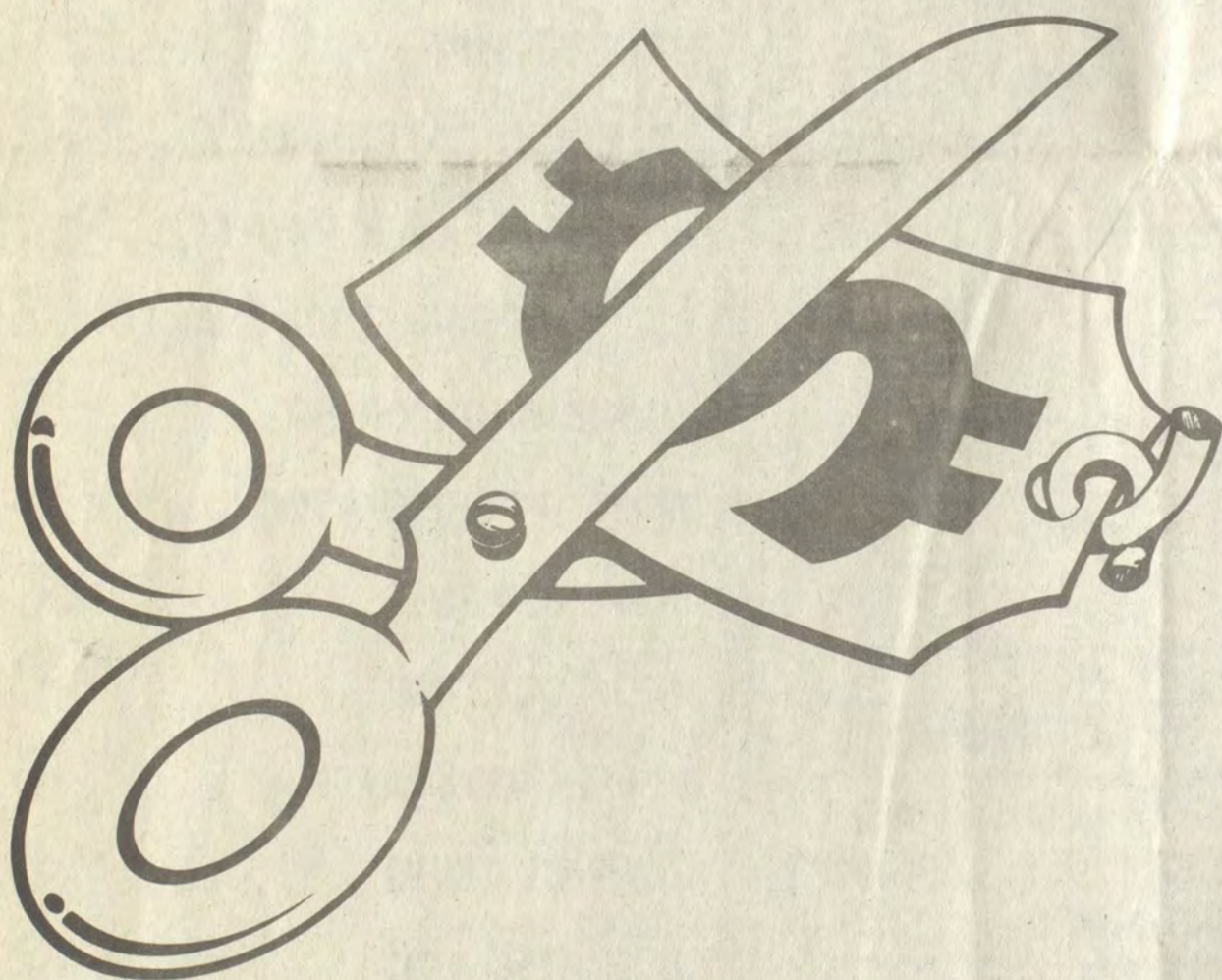
Wal-Mart's Doors Open Soon In Prestonsburg

U.S. 23 at KY 114



Discover "THE WAL-MART WAY"

We Dare You To Compare!



LOW PRICES EVERY DAY!

You won't have to wait for a sale to save at Wal-Mart. In fact our every day prices are often lower than you'll find at our competitor's store during a sale...on the identical item! You'll Save EVEN MORE with our super sale prices!!

We Won't Be Undersold!

In order to offer you additional savings and to further save you time WE WILL MEET ANY LOCAL COMPETITORS CURRENT ADVERTISED SALE PRICE on identically branded items, just bring their ad to our store. We must exclude gimmick promotions, "one of a kind," "double and triple coupons," "clearance," and "flat percentage-off" items.

QUALITY & VALUE!



Wal-Mart has a wide selection of quality name brands you know and trust. You'll find famous brands like Panasonic, Kodak, Hoover, General Electric, Mattel, Corning Zebco, and many more.

The Latest Fashions...

We have quality fashions for your entire family at great everyday low prices. Save on famous labels like L'eggs, Wrangler, Garan, Fruit of the Loom, Hanes, and Playtex, just to name a few.



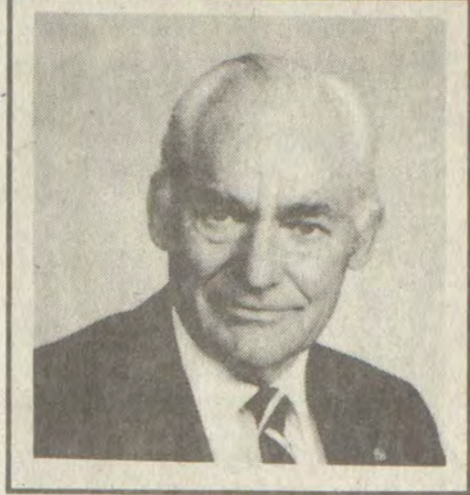


Wal-Mart
Prestonsburg
Village

Don't Miss It!
You're Invited to
Our Fantastic...
SNEAK PREVIEW
SAT. SEPT. 7
and our
GRAND OPENING
CELEBRATION
TUES. SEPT. 10
at 9 a.m.

Look for our ad announcing
 Wal-Mart's big Grand Opening
 Celebration. It won't be long
 now until you can save...
"THE WAL-MART WAY"!

A Joint Message From



SAM M. WALTON
 Founder and Chairman of the Board



DAVID D. GLASS
 President and Chief Operating Officer

All of our 90,000 associates are very enthusiastic about our company's opening a new store in Prestonsburg. The addition of a new store is always exciting, and we want you to know how very proud we are to be a part of your community. By locating in an area such as yours, we are continuing a long tradition and philosophy of operating stores in healthy and growing communities with a bright future.

Along with a wide selection of quality, name-brand merchandise at low prices every day, our store associates will strive to provide friendly customer service and 100% guaranteed satisfaction.

To help us serve you better, we need the benefit of your observations and impressions. They are extremely valuable to us and to your local management team. At the service desk in your store you may pick up your "Letter to the President" form which you can fill out and send to us. If you have a suggestion, complaint, question, or just want to share an opinion—TELL US. Your comments will help us as we constantly strive to improve the ways we serve you every day.



Our commitment
 to serve
 you better
 never ends!



**ONE-STOP
 DISCOUNT
 SHOPPING!**

Our store features over 35 departments offering you incredibly low prices on the things you need, for the way you live today . . . that's "THE WAL-MART WAY." We have everything from fashions to hardware, from lawn and patio supplies (including live plants) to fine jewelry, from electronics to home fashion coordinates, and much more!

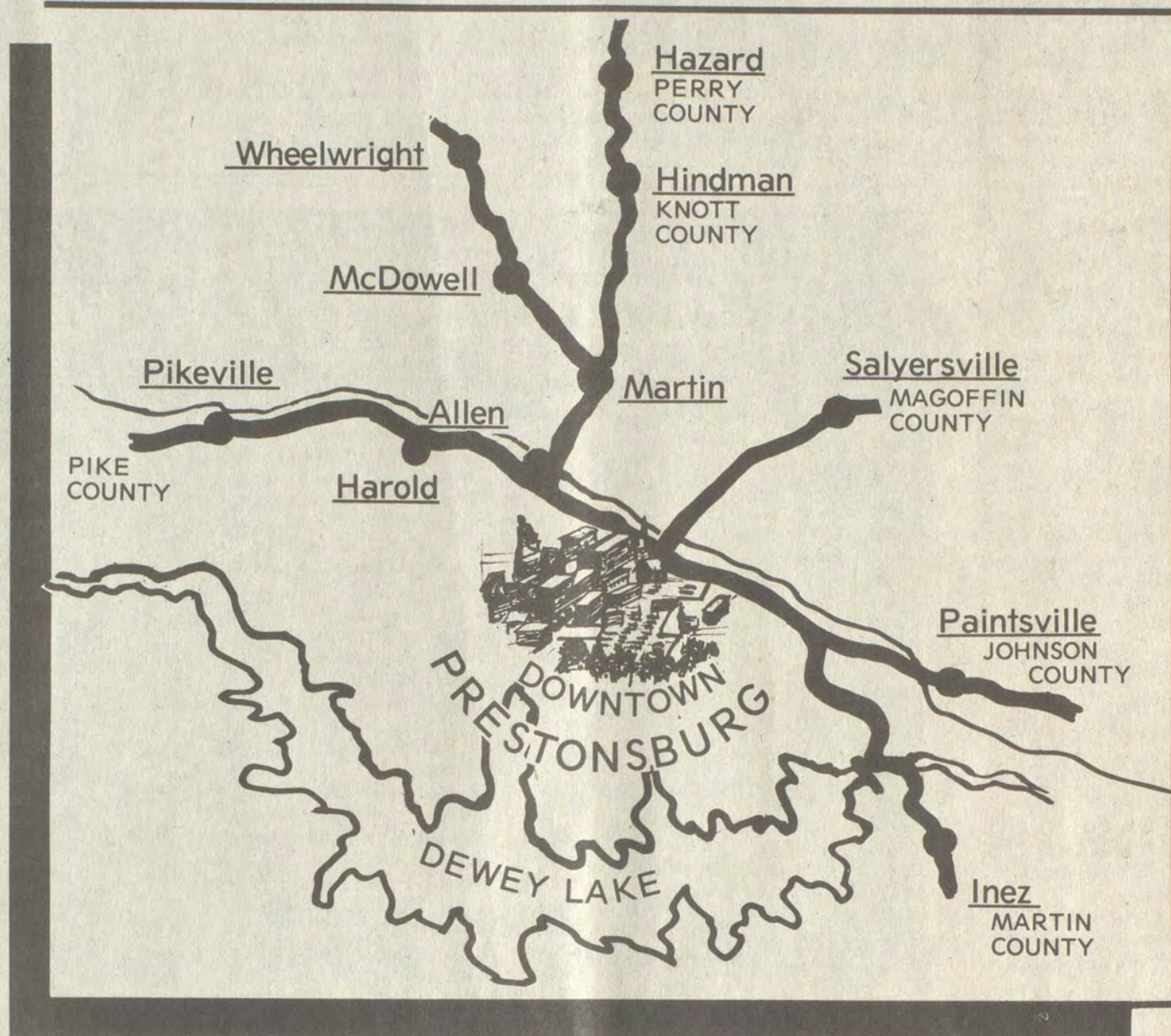
**FAST, FRIENDLY
 SERVICE!**

- Guaranteed Satisfaction on Every Purchase
- No-Service-Charge Layaway Purchase
- Time Saving Courtesy Check Cashing Card
- We Welcome Your Visa and MasterCard





SHOP DOWNTOWN PRESTONSBURG FIRST!



Beautiful Downtown Prestonsburg
On the Banks of the Big Sandy River
Where You'll Find
OVER 50 BUSINESSES TO SERVE YOU:

- | | | |
|-----------------------|--------------------|--------------------------|
| DEPARTMENT STORES | BARBER SHOPS | DOCTORS |
| MEN'S SHOPS | PRINTING SHOPS | DENTISTS |
| LADIES' SHOPS | OFFICE SUPPLIES | FINANCE COMPANIES |
| SHOE STORES | MEDICAL SUPPLIES | BANKS |
| JEWELRY STORES | DIET CENTER | OPTOMETRIST |
| CHILDREN'S SHOPS | SUN BEDS | POST OFFICE |
| COMPUTER STORES | BOOK STORES | COURT HOUSE |
| FURNITURE STORES | BOUTIQUE | CITY HALL |
| HARDWARE STORES | PUBLIC LIBRARY | HEALTH DEPARTMENT |
| DRUG STORES | MOVIES | SUNDRY STORE |
| DISCOUNT STORES | FLOWER SHOPS | FIRE & POLICE DEPARTMENT |
| BATH AND LINEN SHOP | VARIETY STORES | MOUNTAIN COMP. CARE |
| SPORTING GOODS STORES | BEVERAGE SHOPS | CHURCHES |
| HALLMARK STORES | 5 AND 10 STORES | 4 LARGE |
| JEAN SHOPS | EATING PLACES | MUNICIPAL PARKING LOTS |
| SHOE REPAIR | GIFT SHOPS | FREE ON-STREET PARKING |
| RECREATION ROOM | INSURANCE AGENCIES | BLOOD BANK |
| BEAUTY SHOPS | LAWYERS | RENTAL APARTMENTS |
| | | SERVICE STATIONS |



FREE ON-STREET PARKING

—4 LARGE CITY PARKING LOTS—

*"SHOP IN THE ESTABLISHED—
FRIENDLY ATMOSPHERE OF DOWNTOWN"*

FARMER'S MARKET

OPEN 8 TO 10 EVERY DAY PH: 478-5275 HAROLD, KY. IGA

ARMOUR POTTED MEAT 3-OZ. **4/\$1**

CORN DOGS LB. **99¢**

KY. BORDER BOLOGNA SLICED FREE LB. **69¢**

• NO LIMIT ON OUR MEAT SALES!

COKE, DIET COKE, SPRITE, TAB

\$1 19

PLUS DEPOSIT

TIDE DETERGENT 42-OZ. BOX **\$1 99**

1-ROLL HI-DRI PAPER TOWELS **2/\$1**

ARMOUR VIENNA SAUSAGE 5-OZ. **2/89¢**

HEINZ SQUEEZE BOTTLE KETCHUP 28-OZ. **\$1 39**

PALMOLIVE LIQUID 22-OZ. **\$1 19**

MARTHA WHITE—SELF-RISING MEAL 5-LB. BAG **99¢**

IGA (14.5-OZ.) PORK 'N BEANS **3/\$1**

MAXWELL HOUSE INSTANT COFFEE **\$3 99**

12-OZ. JAR

WOLFF TANNING BED

\$5.00 a session OR **\$25.00—6 Sessions**

—Now taking walk-ins and appointments

• 9 A.M.-9 P.M. 7 Days a Week •

CLEAN USED CARS—SAME LOCATION

COOLEY'S USED CARS

LARGE PEACHES **69¢ LB.**

PINK GRAPEFRUIT 5-LB. BAG **\$1 89**

BROCCOLI BUNCH **79¢**

POTATOES **\$3 49**

50-LB.

HORMEL SLICED BACON **79¢ LB.**

RIB-EYE STEAKS **\$3 49 LB.**

FRESH GROUND BEEF **89¢ LB.**

FREE DELIVERY WITH MINIMUM \$20 PURCHASE WITHIN 3 MILE RADIUS.

• PRICES EFFECTIVE THRU SEPT. 8

• NOT RESPONSIBLE FOR PRINTER'S ERRORS.

• WE HAVE FEED FOR LIVESTOCK.

• WE WELCOME FEDERAL FOOD STAMPS. OWNERS, HAROLD & ANN COOLEY. OPEN NOW—HAROLD'S VIDEO ARCADE FOR THE KIDDIES

HAIRCUTS BY HOLLY

STANVILLE, KY.

...would like to introduce to their staff:
Gwan Hamilton Newsome
Gwan is the daughter of Mr. and Mrs. Eugene Hamilton, of Teaberry, and the wife of Lennis Newsome, of Gretel. Gwan attended Prestonsburg Barber College.

To Start Out Right, Beginning Sept. 3 thru Sept. 10

ALL PERMS \$35*

FROSTS \$20*

WOLFF TANNING SYSTEM 10 Sessions \$29.95

*Cut Not Included

SO JUST WALK IN OR CALL FOR AN APPOINTMENT TODAY **478-2255**

MAYTOWN NEWS

Mrs. Delbert Goins and Delbert Milton and Mrs. Claud Webb were in Lexington on business, Tuesday.

Mrs. Morton Adkins is recuperating at home after receiving treatment at the Paul B. Hall Medical Center last week. She wishes to thank Dr. Hall and the hospital staff for their good care.

Mrs. Earl E. Webb and Mrs. Tommy E. Webb were shopping in Lexington, Saturday.

Mrs. Anna Wright, Mrs. Rose Bowling and Miss Verna Bowling honored Mrs. Wanda Brown with a surprise birthday dinner at Chi Childs in Lexington, Wednesday, Aug. 28. She received a decorated birthday cake and they sang "Happy Birthday" in Spanish to her.

Our sympathy to the family of Hershel Gibson who passed away Sunday night following an extended illness.

Mr. and Mrs. Claude J. Webb, Jennings and Gary, Mr. and Mrs. Sammy Skeans, Mrs. Sarah Allen, Mrs. Bertha Gibson, Mrs. Earla Gibson and Mrs. Della Hicks were among those from here attending the Prater-Mullins Memorial on Prater Fork, Sunday.

Buel Spears underwent surgery at the Veteran's Hospital in Lexington last week. Mrs. Spears and other family members have been there with him.

Mrs. Jane Dudley is recuperating at home following surgery at a Lexington hospital.

Miss Beverly Reffitt is a patient at Central Baptist Hospital in Lexington.

Mr. and Mrs. Johnny Rodebaugh and Jonathan, of Lexington, were the weekend guests of her parents, Mr. and Mrs. Junior Harmon.

Dinner guests of Mr. and Mrs. George A. Patton, Sunday, were Mr. and Mrs. Harold Chesney, Mr. and Mrs. Ralph Davidson, Mr. and Mrs. Mark Davidson, Lindsey and Amanda, Zionsville, Ind., Debbie Davidson, Carmel, Ind., Mr. and Mrs. Billy Joe Patton and Leigh Ann, Mr. and Mrs. Paul Patton, Tim and Nikki and Jerry Patton, all of Prestonsburg; Marcella Bishop, of Martin; Mr. and Mrs. Hubert Halbert, Stephen, Elizabeth Ann, Wesley and Stuart, Effie Post, Mrs. Ershel Goble and Bridgett Bentley.

DRIVE A LITTLE SAVE A LOT

JOHN GRAY

Pontiac, Buick, GMC Trucks, Inc.

THE TRUCKER'S STRIKE IS OVER AND WE RECEIVED 25 TRUCKS THIS WEEK.

We're overstocked and **MUST SELL these units.**

John Gray says "Get your best deal - bring it to us - WE'll beat it!"

CHECK THESE PRICES

- ★ **1985 GMC 2WD PICKUP**
V-6 and V-8, 3-speed or automatic, p.s., p.b., full-size spare, step bumper and more. Short and long wheelbase. Four to choose from. **\$8,495**
- ★ **1985 GMC S-15 JIMMYS**
V-6 engine, deluxe tu-tone, Sierra Classic, tilt, cruise, AM/FM cassette, custom cloth interior, air conditioning, p.s., p.b., console, folding rear seat, full size spare, cast aluminum wheels, luggage rack, rear air deflector, much more. 4 to choose from **\$14,599**
- ★ **1985 C-1500 4x4**
4-speed, V-8, p.s., p.b., limited slip differential, heavy duty front and rear springs, quad front shocks. Work ready. **\$10,789¹³**
- ★ **1985 GMC S-15 4x4 LWB**
Work-ready truck, V-6, 4-spd., p.s., p.b. Full size spare and more. 3 to choose from **\$9,334²⁴**

OVER 25 NEW GMC TWO- AND FOUR-WHEEL DRIVE FULL SIZE PICKUPS IN STOCK ALL WITH GMAC 7.7 APR FINANCING.

See Bob Lawson or Marvin Ousley on Broadway in Paintsville
"We'll save you money."
789-2030

Pharmacy Footnotes

By HAROLD COOLEY

FEVER PITCH

Most parents are frightened by a child's fever. It turns out, however, that the real cause for concern may be parental misinformation about this symptom. The fact is that a temperature of less than 101°F. is not a fever. It should not be treated. Fever alone is not a reliable guide to the seriousness of an illness. According to the American Academy of Pediatrics, a fever of 102°F. is low-grade; 104°F. is moderate. In spite of parental fears, and except in newborns, any fever under 106°F. is actually harmless. That is, although the child could experience discomfort, it has no neurological consequences. As with any symptom, report fever that persists beyond 24 hours to your pediatrician.

Our pharmacists at COOLEY APOTHECARY are pledged to further and maintain the highest ethical standards of the pharmaceutical industry so call your pediatrician or family doctor first and then have him call us. We maintain an up to date supply of thousands of RX products. Our pharmacists are proud to be part of an important team whose main goal is to keep you and your family healthy. You'll find us located at No. 2 Town Center Bldg., 886-8106 and open Mon.-Fri. 9-5:30, Sat. 9-4. Master Charge and Visa honored plus we welcome all third party payments.

HANDY HINT:
Do you have an infant? Invest in a digital thermometer.

Mrs. Beshear To Speak At May Lodge Seminar

Mrs. Jane Beshear, chair of the Kentucky Literacy Commission, will address the Leadership Kentucky Education Seminar at May Lodge, Jenny Wiley State Park, Friday, September 6 at 8:45 a.m.

Mrs. Beshear, wife of Lieut. Gov. Steve Beshear, will discuss the topic, "A Basic Problem: Functional Illiteracy—Too Many Kentuckians Cannot Read, Write or Calculate."

She is the first speaker on the two-day agenda.



WHY NOT BACK-TO-SCHOOL IN A GOOD USED CAR FROM MUSIC-CARTER-HUGHES

EASTERN KENTUCKY'S FINEST, LATE-MODEL USED CARS ARE AT MUSIC-CARTER-HUGHES

All of our late-model used cars from 1980 up through 1985 that are not covered by factory warranty are covered by a service contract which is, simply, mechanical break-down insurance. Don't be misled by the as-is stickers the federal government requires us to put on every used car. Ask your salesman for details.

1983 CADILLAC FLEETWOOD BROUGHAM 4-DOOR. Western saddle metallic with tan leather interior. All power. Local, one owner. **\$13,500.**

1983 CHEVETTE 2-DOOR. Blue with blue vinyl trim, 25,000 miles, automatic transmission. Luggage rack. **\$3950.**

1985 CHRYSLER NEW YORKER 4-DOOR SEDAN. White with red velour interior. Has all the extras. 300 miles. New car warranty. **Save \$2000.**

1984 CHEVROLET MONTE CARLO. Beige with brown vinyl roof, V-6 engine, automatic transmission, power steering, power brakes. Low miles. **Priced to sell at \$9450**

1981 JEEP WAGONEER LIMITED. Black with saddle interior. All the buttons. **\$8950.**

1984 BUICK REGAL LIMITED 4-DOOR. White with blue vinyl roof, blue cloth interior, V-6 engine, automatic transmission, power steering, power brakes, power windows, tilt wheel. **A real nice car! \$9450.**

1984 FORD THUNDERBIRD. Red with gray cloth interior, 302 engine, automatic transmission, AM-FM radio and much more. **Reduced to \$8950.**

1984 PLYMOUTH HORIZON. Economy car. Brown with tan interior, 4-speed transmission. Super gas mileage. **\$5950.**

1982 BUICK REGAL 2-DOOR. Tutone blue with blue interior, V-6 engine, automatic, air-conditioned. One owner. A good buy! **\$6940.**

1985 DODGE OMNI 4-DOOR. 4-cylinder. Front wheel drive. Automatic transmission, power steering, air-conditioned, AM-FM radio. Red with red interior. New car warranty still good. **\$7950.**

1984 DODGE D100 PICKUP. Tutone white with red accent. 6-cylinder, 4-speed stick shift. Low miles. **\$6950.**

1983 BUICK REGAL 2-DOOR COUPE. Light brown metallic with dark brown velour interior. All power, low miles. **\$8950.**

1983 CHEVROLET S10 4-WHEEL DRIVE EXTENDED CAB PICKUP. Red with charcoal interior, V-6 engine, 5-speed, air-conditioned. AM-FM cassette tape. **\$9750.**

1980 CHEVROLET SUBURBAN CARRYALL 4-WHEEL DRIVE WAGON. 305 engine, automatic transmission, air-conditioning. Brown in color. Unusually clean. **\$6950.**

1984 CHEVROLET CAMARO Z28. Red with charcoal interior, 305 engine, automatic, overdrive transmission, AM-FM cassette, power windows. Only 6,000 miles. Still has a new car warranty. **A real steal—\$10,900**

1980 TOYOTA 2-DOOR. Red, stick shift. Terrel economy plus. **\$3950.**

WE HAVE 7.5% FINANCING ON MOST CHRYSLER MODELS

WE HAVE 7.7% FINANCING ON MOST GM MODELS



ASK YOUR SALESMAN FOR DETAILS!

MUSIC-CARTER-HUGHES CHEVROLET-BUICK

PHONE 886-9181
SOUTH LAKE DRIVE
PRESTONSBURG

GM QUALITY SERVICE/PARTS
GENERAL MOTORS PARTS DIVISION

SPECIAL 2 WEEKS ONLY
We Want Your Business!

TO SATELLITE SYSTEM WITH LNA POLOROTOR AND RECEIVER **\$802**
* INSTALLED WITH 125' CABLE **\$1073**

CASH & CARRY

LANCER-WATERGAP RD., PRESTONSBURG, KY.
874-2635 • OPEN: 10 TO 5, TUES.-THURS.; 10 TO 5:30, FRI.-SAT.

Wins Judging Honors



John Martin, Garrett 4-H member, displays the blue ribbon he won by finishing in the top ten at the state 4-H vegetable judging contest at the Kentucky State Fair. He is the 12-year-old son of Mr. and Mrs. Thomas Martin, of Langley.

Tourism Dept. To Give Fall Foliage Information

For the first time, travelers to Kentucky this fall will be able to get up-to-date information on the state's beautiful fall foliage. Tourism Secretary Wendell Combs said last week.

Through a cabinet program called "ColorFALL Kentucky," a visitor will be able to call a toll-free phone number, 1-800-225-8747, to obtain a region-by-region summary of foliage conditions. The information will be updated weekly. The program starts Sept. 24, unless leaf conditions dictate an earlier or later start.

Combs said ColorFALL Kentucky will be similar to established fall foliage programs in other states. "The fall-foliage season is very important to the tourism economies of New Hampshire, Vermont, and other states," Combs said. "We believe there is excellent potential for growth for fall-foliage sightseeing in Kentucky."

ColorFALL Kentucky is a cooperative effort of the Office of the Secretary, the Department of Travel Development, and the Department of Parks. Under the program, state park naturalists at eight reporting stations throughout the state will report to the Department of Parks central office the progress of leaf color changes. The information will be depicted on a map and also reported in an accompanying news release. The weekly map and release will be sent to TV weathercasters at 25 stations in Kentucky and surrounding states. More than 300 newspapers and radio stations in the region also will receive the map and release.

Department of Travel Development telephone operators will be provided the map each Tuesday.

LITTLE BEAR MARKET ALLEN, KY. 874-2290
HOURS: MONDAY-SATURDAY 8 A.M.-8 P.M. SUNDAY 10 A.M.-6 P.M.

U.S.D.A. CHOICE T-BONE STEAK \$3.69 LB.

HORMEL-SLICED PLATTER BACON 89¢ LB.

SIRLOIN STEAK \$3.29 LB.

FRESH GROUND ROUND \$1.69 LB.

ROUND ROAST \$1.79 LB.

LEAN, BONELESS BEEF FOR STEW \$1.89 LB.

BOSTON BUTT STYLE PORK ROAST \$1.09 LB.

FRESH PORK STEAK \$1.19 LB.

SWIFT PREMIUM SLICED or CHUNK BOLOGNA \$1.29 LB.

SWIFT PREMIUM (BY THE ROLL) BOLOGNA \$1.19 LB.

4-ROLL PKG.—VELVET BATHROOM TISSUE 79¢

1-LB. PKG.—CREAMETTES ELBOW MACARONI 2/\$1.09

QUART—WAGNER'S ORANGE DRINK 59¢

GALLON CLOROX BLEACH 99¢

PRICES IN EFFECT WED., SEPT. 4 THRU SUN., SEPT. 8
• QUANTITY RIGHTS RESERVED
• NOT RESPONSIBLE FOR PRINTER'S ERRORS

• SEE THE GOLDEN VALUE MARKETS AD ELSEWHERE IN THIS PAPER •

FOR SALE OR RENT:

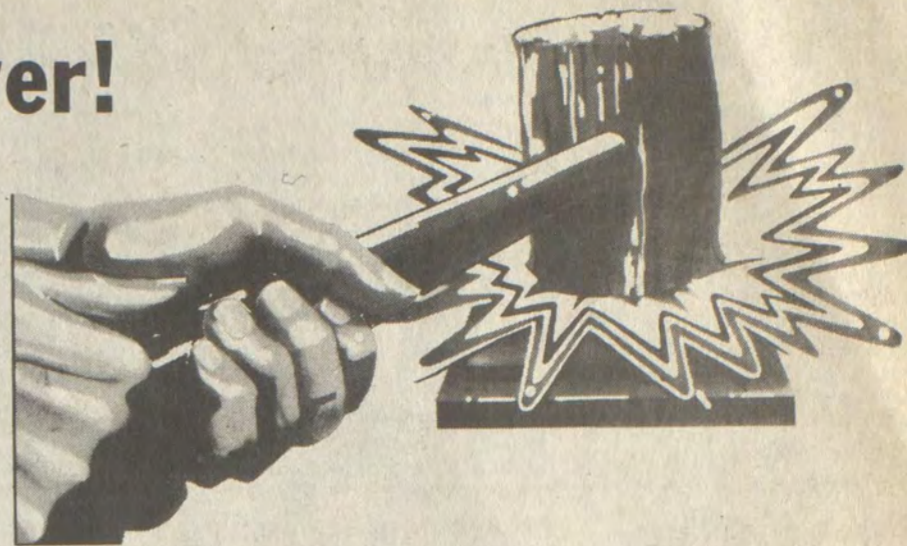
Chalet Round House located in Lakeview Village, Lake Road, Prestonsburg. Fully carpeted, custom draperies, 2 full size baths, stone fireplace, kitchen complete, range, refrigerator, dishwasher, trash compactor.

Phone for additional details
886-8168 (or) 886-6673

— WE BEAT OUT OF TOWN DEALS! — TOTAL TRANSPORTATION CENTER — HOME OF THE SUPERTRADERS

2-Day Sale—Lowest Interest Rates Ever!

BEAT IT!



2 DAYS ONLY
This Friday, 8 a.m. to 10 p.m.
Saturday, 8 a.m. to 5 p.m.

SUPERTRADERS

\$1,000 to \$1,500
Down On
Straight-out Deals
Plus Tax & Fees

NO GIMMICKS!
We Mean
BUSINESS!!
36-Month Financing
Up to 48 Months
Available with
25% Down
To Qualified Buyers

4.4% A.P.R.
Financing on
All '85 Nissan Trucks
IN STOCK

8.8% A.P.R.
Financing on
All '86 Nissan Trucks
50 To Choose From

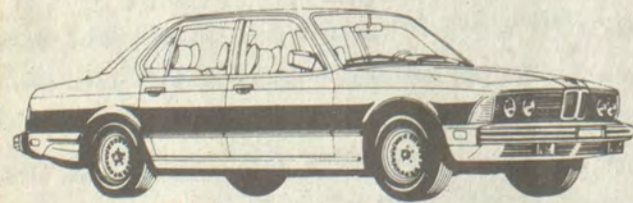
6.9% A.P.R.
Financing on
All '85 Nissan Cars
50 To Choose From

★ Register For Free Drawing
• No Purchase Necessary
2 Microwave Ovens
To Be Given Away!

★ Will Sell 50 Units
on a **FIRST-COME, FIRST SERVE**
BASIS!!

4.4%-6.9%-8.8%
A.P.R. Financing
BEAT IT!!

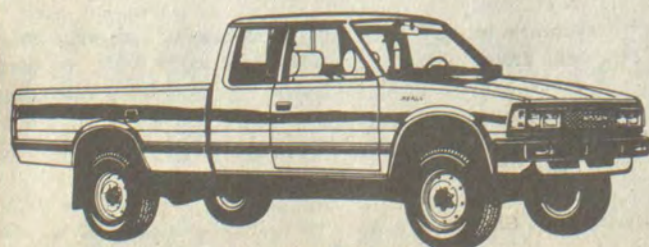
REGISTER EARLY FOR OUR
3rd Annual
Automotive Flea Market
Coming Saturday, September 21st
★ Live Music ★ Fun and Games ★ Contests ★ Pepsi
★ Hot Dogs ★ Flea Market Tables ★ Cash Prizes
★ Free Auto Auction Open To The Public ★ And
Much, Much More!
Expecting 5,000 People To Register
During This Big Event.



BMW
733i



Nissan 300 ZX 2+2 Coupe
with optional T-Bar Roof



Nissan Deluxe King Cab 4x4

★ Waylon Jennings Tickets On Sale Here—\$13.00 Each

Home Of The Supertraders
Award Winners
PIKE FLOYD MOTORS, INC.
Your Nissan-BMW Dealer
U.S. 23 North—Pikeville, Ky.
437-4011
Owner, Claude Maynard

- SEE:**
- John Francis
 - Harold Wallace
 - Wendell Wright
 - Charley Hall
 - Jim Cline
 - Philip Blackburn
 - Claude Maynard

HOME OF THE SUPERTRADERS — YOUR FASTEST GROWING DEALER! — DON'T LEAVE TOWN — LEASING

WE GET ACTION! — WE BEAT OUT OF TOWN DEALS! — TOTAL TRANSPORTATION CENTER — HOME OF THE SUPERTRADERS — YOUR FASTEST GROWING DEALER!

RENTALS \$8.95 PER DAY & UP — LEASING — RENTALS \$8.95 PER DAY & UP — WE GET ACTION! — WE BEAT OUT OF TOWN DEALS! — TOTAL TRANSPORTATION CENTER

**SELL IT FAST!
BUY IT RIGHT! USE WANT ADS!**



For Sale—Mobile home. 3-bedroom, 1½-bath, central heating/cooling. Good condition. Can be left on lot. Land for sale.

874-2879

**INVITATION TO LEASE
OFFICE SPACE**

The Finance and Administration Cabinet of Kentucky desires to lease approximately 616 net square feet of office space to be located in Prestonsburg, Kentucky. Parking to accommodate four (4) vehicles must accompany the space. Space must be available for occupancy on or before October 1, 1985.

Responses may be made by any person in writing on or before 10:00 a.m., Friday, September 13, 1985. You need only to designate the type and location of the property, the name, address, and phone number of the property owner, and the date of availability of the property for lease. Lease Requisition Number PR-3174 should be clearly marked on the outside envelope of each proposal submitted to Room 171, New Capitol Annex, Frankfort, Kentucky 40601.

All responses received will be publicly opened and read at the above designated time. You will be notified by a representative of the Leasing Branch so that an appointment can be made to inspect the proposed facility.

Property must be approved by the office of the State Fire Marshal, meet OSHA and handicapped accessibility specifications, as well as existing applicable building codes. For any additional information, contact Ms. W. H. Lile of the Leasing Branch at (502) 564-2430.

**Training
Opportunity
Protection**

The Kentucky National Guard offers programs designed to help you **Reach The TOP** including **Education Assistance • Enlistment Bonus
Technical Training
"Go For It"
Call Today**

**POSITIONS AVAILABLE
REGISTERED NURSES
and
LICENSED PRACTICAL NURSES**

Excellent salaries plus shift differential.

Benefits: Paid hospitalization, paid vacation, nine paid holidays, sick leave, life insurance, professional liability insurance, tax sheltered annuity, Employee's Federal Credit Union, retirement/pension plan, uniforms furnished for LPNs, uniform allowance for RNs.

Contact: **Mrs. Gayle Goad, R.N.**
Director of Nursing Services
Williamson Appalachian Regional Hospital
2000 Central Avenue
South Williamson, Kentucky 41503
Phone (606) 237-1010, Extension 294 or 214

DUE TO EXPANSION

We are interviewing candidates for a **Parts Counter Person**.

Qualifications:

- GM Experience Preferred
- Honesty
- Integrity
- Desire to be a part of the fastest-growing parts facility in Eastern Kentucky

APPLY IN PERSON
Ed Walters Motor Car & Truck Co., Inc.
430 South Lake Drive
Prestonsburg, Ky. 431653

DUE TO EXPANSION

We are interviewing candidates for the position of **Service Manager**

Qualifications:

- GM Experience Preferred
- Honesty
- Integrity
- Desire to manage a top-notch crew in a fast-growing organization

APPLY IN PERSON
Ed Walters Motor Car & Truck Co., Inc.
430 South Lake Drive
Prestonsburg, Ky. 41653

OFFICE SPACE FOR RENT
Downtown Prestonsburg
Over Clyde Burchett's Jewellery Store.
886-2734 or 886-2412

**SAM GOODMAN'S
MAINTENANCE & REPAIR SERVICE**
Will repair plumbing, electrical, and sewer repair.
874-9990

**LITTLE'S
MOBILE HOME MOVING**
Topmost
• FREE ESTIMATES •
• INSURED AND LICENSED BY STATE •
PHONE 447-2869

Manager Trainee
If you qualify you will receive \$1500 per month for 2 months while in school. \$24,000 per year after graduation. Sales and management helpful.
Call 874-9041

HOUSE FOR SALE



7-Room House in Town.
Call 886-6332

**M&M
HOUSEMOVING AND RAISING**

MODERN HYDRAULIC JACKING SYSTEM

We are now in the area moving & raising houses.

Also heavy equipment hauling and excavation
(606)248-0350 (606)248-4174

**ALLEN WOMAN'S CLUB
WHITE ELEPHANT
SALE**

- CLOTHING • TOYS • BOOKS
 - FURNITURE • APPLIANCES
 - DONATIONS ACCEPTED •
- Bring something in and buy something to take home.



**SEPT.
5, 6, & 7**
Located in Allen
Near Bank Josephine

**WHEN WE BUILT IT, YOU GET MORE
BUILDING FOR YOUR MONEY.**



HERE'S WHY:
We custom-design and construct buildings to fit your precise needs—without cost penalties or added construction time. Industrial, commercial, warehouses, agricultural, recreational and institutional. Durable, attractive and energy efficient.

VARCO-PRUDEN AUTHORIZED BUILDER
F. E. E., Inc.
606-886-8852
Prestonsburg, Ky. 41653

**WHEN YOU KNOW WHO WE ARE,
YOU WON'T BUILD ANY OTHER WAY.**

**COLLINS
SECURITY SERVICE**

LICENSED • BONDED • INSURED

**24-HOUR GUARD SERVICE
20 YEARS SECURITY EXPERIENCE**

(606) 886-9867 or (606) 886-3655

**HALL'S
HOUSE RAISING**
• We raise, level and move houses
• We also do block and concrete work
447-3242 447-2610

**THE COW CREEK
VOLUNTEER
FIRE DEPARTMENT**
will be handling the concession again this year at Jenny Wiley Amphitheater during **JENNY WILEY FOLK FESTIVAL** **SEPTEMBER 5, 6, 7 & 8**
Come on over and enjoy the music, our hot dogs, baked goods and fried apple pies.

CONCRETE WORK

All types concrete work and stucco.

**GENE MEADE
CONCRETE CONTRACTOR**
Call collect anytime
789-6787

**'85 CLOSEOUT
SALE!**

Now is the time to own a home from Clayton's! The prices have never been lower! Many homes are loaded with options! Take advantage of this limited offer! See Hubert today!



U.S. 23, Harold, Ky.—606-478-9248

**Carpet Installer
Wanted**

Must have experience. Capable of handling large quantity of carpet and resilient floor covering. Send resume to Bardstown Carpet, 221 West John Rowan Blvd., Bardstown, Ky. 40004

CONCRETE

Commercial & Residential
• Floors • Patios
• Walls • Sidewalks
• Foundations • Driveways
Free Estimates

Ousley Concrete Const. Inc.
West Prestonsburg, Ky.
**PHONE JAMES OUSLEY
886-8373**

**G. & C.
CONTINUOUS
GUTTERING**

- All Work Guaranteed
- Free Estimates

Phone day or night
Luther Clark Donnie Goble
886-3351 874-9876

**WALLPAPERING
and PAINTING**

- Ten Years Experience
- Quality Work

STEVE RUFFING
886-1474

**Water Well
Drilling**

Most wells drilled in half a day by Rotary Machine.
Kinzer Drilling Co.
Allen, Ky.
Phone 874-2258

NOTICE

The Big Sandy Area Development District is seeking to fill the position of Housing Development Coordinator. The position requires extensive experience with private and public financing mechanisms as well as on-site housing construction/construction management. Persons interested in this position must submit a resume with references on or before September 12, 1985 to:

Big Sandy Area Development District
Municipal Building, 2nd Floor
Prestonsburg, KY 41653

**WANTED: Remodeling
of Any Kind**

- Additions • Porches
- Windows • Drywall
- Siding • Doors
- Painting • Roofing
- Cement Work
- Texture Ceilings

**FREE ESTIMATES
CALL 886-1729**

FOR RENT

3-room furnished apartment minutes from Prestonsburg or Paintsville, at Van Lear. TV cable and water paid. Hook-ups for washer and dryer.
**Call after 5
789-3071**

**MARTHA GRADING
& EXCAVATING**
Martha, Ky.

- Residential and Commercial •
 - Roads, driveways, ditches, septic tanks, coal exploration
 - Basements and footers, house/trailer sights, dwelling sights
- Call: **RANDY KELLER**
(606) 652-9323
P.O. Box 74, Louisa, Ky. 41230

**TROY'S
CABINET
CENTER**
US 23, Ivel, Ky.

Stock or Custom-Built Cabinets
Kitchen Cabinets, Vanities
Thermador Appliances
on Display

Free Estimates Discount Prices
Call 478-5344

**INSTANT
HOUSING!**

Just add people! Several repo homes in stock! No reasonable offer refused! **Prices from \$1,995 and up!** Financing as low as 7% down at 12.77% APR! Limited offer! See Hubert today!



U.S. 23, Harold, Ky.—606-478-9248

**RAY HOWELL BUILDING
& HOME IMPROVEMENTS**
• REMODELING • DECKS
• PAINTING • ROOFING
• DRYWALL • FENCES
• TEXTURING • STORAGE BLDGS.
• WALL PAPERING • ETC.
FOR ALL YOUR HOME IMPROVEMENT NEEDS.
789-8731

**BOB WHITE
CONSTRUCTION**
Box 282, Prestonsburg, Ky.
Dozers • Backhoes
• Dump Trucks
• FREE ESTIMATES
Call 886-3544

**MOVE 'EM
OUT!**

'85 models and pre-owned homes have got to go! We're overstocked and busting at the seams! Hurry—while the selection is good! Plenty of financing available at reasonable rates! See Hubert today!



**MOBILE HOME
MOVING SERVICE**

- Reliable Service
- Dependable Personnel
- Experienced Movers
- Free Estimate
- Insured

**358-4520
358-9348**

LAWN & GARDEN

Accessories/Replacement Parts



**HITCHCOCK
REPAIR SERVICE**

- REFRIGERATORS
- AIR CONDITIONERS
- MICROWAVES
- WASHERS • DRYERS
- RANGES

**PARTS, SERVICE
AND
INSTALLATION**
**PHONE:
886-6900
OR
886-1473**

Complete line of:

- ★ Rustic Veneering Stone
- ★ Cut Stone
- ★ Slate and Marble Tile

—READY MADE—

- ★ Concrete Steps
- ★ Marble Hearths
- ★ Marble Mantles
- ★ Flagstone

**SANDY VALLEY
MONUMENT AND
BUILDING STONE CO.**
ALLEN, KY. 874-2273

GUARANTEED WEIGHT LOSS.

Heard about the newest discovery in the war against fat? It is absolutely amazing. Believe it or not, this great discovery allows you to eat your favorite foods and still lose weight! It's called FULL 'N FREE DietPlan, a natural dietary food fiber from the Oriental Konjac root. Simply take 2 capsules at least 30 minutes before each meal. The capsule absorbs up to 60 times its weight in water... turning from powder to gel. With the expanding gel in your stomach, you experience a naturally FULL feeling without even picking up your fork. Imagine how you'd look carving up to 7" off your hips or waist... up to 5" off your thighs or buttocks. FULL 'N FREE is safe to use and FREE from any harmful chemicals... and it's so effective it is being sold with an unconditional money back guarantee.

AVAILABLE AT:

ROSE DRUG CO., 124 W Court Street—Prestonsburg;
HERRIN-JOHNSON PHARMACY, 721 University Drive—Prestonsburg; FOUNTAIN KORNER DRUG, 2 Court Street—Prestonsburg.

Chamber of Commerce Donates \$1,500 To Jenny Wiley Theatre



The Floyd County Chamber of Commerce this week donated \$1,500 to the Jenny Wiley Theatre.

Chamber of Commerce President Rob Schissler said the Chamber is designating the money to help with the theatre's advertising expenses. By doing so the Chamber's gift will be matched by the Kentucky Department of Travel Development's Matching Fund Program at the rate of 50 cents for every dollar of theatre advertising.

This is not the first time the Chamber of Commerce has helped the theatre. Last year, it gave the theatre \$1,000 and loaned it \$1,500. In addition to financial support, the Chamber of Commerce commends the theatre to individuals and businesses considering moving to this area.

Asked about the Chamber's gift, Jenny Wiley Theatre General Manager Steve Cornwell said "The theatre is very grateful for the generous gift and we are thankful for the good relationship we have with the Floyd County Chamber of Commerce. I look forward to working with the Chamber in the future as we both work to make our area a good place to live."

Sandy Valley Senior Citizens MENU

Monday, Sept. 9—Sloppy Joes, cole slaw, oven fries, green peas, fruited jello, milk.

Tuesday, Sept. 10—Swiss steak with tomatoes and peppers, buttered carrots, rice, biscuits, oranges, milk.

Wednesday, Sept. 11—Barbecue chicken, scalloped potatoes, green beans, rolls, fruit juice and cookies, milk.

Thursday, Sept. 12—Meat balls with gravy, macaroni and cheese, tossed salad, French bread, apple cobbler, milk.

Friday, Sept. 13—Ham slices, Northern beans, country style tomatoes, cornbread, pound cake, milk.

Aluminum pots may darken from spinach or potatoes or other alkaline foods. Brighten by boiling two teaspoons of cream of tartar to one quart of water.

DENTURES

\$139 per upper or lower

\$278 per complete set

Characterized Dentures

\$169 per denture

Denture Repairs, Relines Also Available.

OUR PLEDGE:

1. AFFORDABLE PRICES.
2. ONE-DAY SERVICE ON DENTURE REPAIRS AND RELINES
3. AVAILABLE: FILLINGS, EXTRACTIONS
4. NO SURPRISES; TREATMENT AND COST ARE DISCUSSED FIRST YOU DETERMINE THE AMOUNT OF SERVICE
5. PERSONAL ATTENTION: OLD FASHIONED COURTESY AND CONCERN ARE ASSURED IN THE OFFICE OF A DAD MEMBER DENTIST
6. HIGH STANDARDS.

606/874-2020

D.A.D. MEMBER OFFICE IN ALLEN...

ALLEN DENTAL CENTER

Dr. R. I. Goodman, D.M.D.

Allen, Kentucky

member of



TERM INSURANCE WAR

COMPARE YOUR PREMIUMS!

\$250,000 TERM LIFE INSURANCE*

MEN		WOMEN	
AGE	FIRST ANNUAL PREMIUM	AGE	FIRST ANNUAL PREMIUM
30	\$ 197.50	30	\$192.50
35	\$ 202.50	35	\$197.50
40	\$ 255.00	40	\$202.50
45	\$ 315.00	45	\$255.00
50	\$ 457.50	50	\$315.00
55	\$ 717.50	55	\$457.50
60	\$1,222.50	60	\$717.50

Rate for non-smoker, one year renewable term.

FOR LARGER AMOUNTS, ADDITIONAL DISCOUNTS MAY APPLY.

Competitive smoker rates also available.

* Available To Age 65-Renewable to Age 99 • Guaranteed Convertible to Permanent Insurance • In Full or In Part • Monthly Premium Plan Available • A Physical Exam May Be Necessary At Our Expense. If You Are In Poor Health Or Have Questions About Your Insurability, Call Us! We Have A Plan For You-Including A Guaranteed Issue Life Insurance Plan.

BIG SANDY INSURANCE AGENCY

MARTIN 285-3295 PIKEVILLE 432-0031

7-31-85

PAYING TOO MUCH FOR:

- Auto Insurance or
- Homeowners (Special rates for rural areas!)

SEE HATTON-ALLEN INSURANCE AGENCY

Denzil Allen, General Agent
483 South Lake Drive—Prestonsburg

FILL 'ER UP FOR LESS

• PRICES EFFECTIVE SEPT. 4 THRU SEPT. 8
WE RESERVE THE RIGHT TO LIMIT QUANTITIES
AND CORRECT PRINTING ERRORS.



WHITE RAIN HAIR SPRAY \$1.29

7-OZ.

AQUA FRESH PUMP TOOTH PASTE FOR ADULTS

\$1.69

4.6-OZ.



18-OZ.—JIF PEANUT BUTTER \$1.59

OZARK VALLEY CHICKEN OR TURKEY POT PIES 4/\$1

32-OZ. VLASIC HAMBURGER DILL SLICES 99¢

32-OZ. DOVE DISH DETERGENT 99¢



1-LB.—KRAFT PARKAY MARGARINE 69¢

2-LB.—SALISBURY STEAK, MEAT LOAF, TURKEY FREEZER QUEEN DINNERS \$1.59

12-OZ.—KEEBLER SOFT BATCH CHOCOLATE CHIP COOKIES \$1.39

5-LB. PERFECTION FLOUR 99¢

5-LB.—LOG CABIN MEAL 99¢

32-OZ.—JFG SALAD DRESSING \$1.09

64-OZ. DOWNY FABRIC SOFTENER \$1.99

16-OZ. OLD VIRGINIA STRAWBERRY PRESERVES \$1.19

10-OZ. VIETTI HOT DOG SAUCE 3/\$1

46-OZ. DONALD DUCK UNSWEETENED ORANGE JUICE \$1.19

NO. 300—ALLEN TURNIP OR MUSTARD GREENS 4/\$1

QUART VALVOLINE 10W40 OIL 99¢

7-OZ. GENERIC MACARONI & CHEESE 4/\$1

U.S. CHOICE RIB EYE 3.69 LB.

12-OZ. FISCHER'S WIENERS 99¢

2-LB. WEBBER'S SAUSAGE \$2.99

200-CT. FILLER PAPER 79¢

1-LB. ZESTA CRACKERS 99¢

NO. 300—ALLEN WHITE or GOLDEN HOMINY 4/\$1

46-OZ.—DONALD DUCK UNSWEETENED ORANGE JUICE \$1.19

SHOP THESE FOUR GOLDEN VALUE MARKETS

LILLIE CAMPBELL AND SON GARRETT, KY. HOURS: MON. THRU SAT. 8 TO 6 CLOSED SUNDAY

HALL'S BYPRO MARKET BYPRO, KY. MON. THRU SAT. 9 TO 7 SUN. 12 TO 5

TRIANGLE MARKET MARTIN, KY. MON. THRU SAT. 7 TO 7; FRI. 7 TO 8; SUN. 9 TO 7

LITTLE BEAR MARKET ALLEN, KY. MON. THRU SAT. 8 TO 8; SUN. 10 TO 6

PRESTONSBURG AND MARTIN

MIRACLE IGA PRICES

TALK COMPA

NATURE'S OWN STONE GROUND WHEAT BREAD 79c 20-Oz. Loaf

ROMAN MEAL BREAD 79c 16-Oz. Loaf

QUARTER LOIN PORK CHOPS \$1.39 Lb.

IGA VEGETABLES 3 \$1 16-Oz. Cans

WHI TOILE

4-Roll Pkg.

- USDA CHOICE-BONELESS SIRLOIN TIP STEAK \$2.29 LB.
SMALLER PACKS-\$2.19 Lb. CHOICE CUBE STEAK \$9.95 5-Lb. Pkg.
USDA CHOICE-BONELESS RIBEYE STEAKS \$3.99 LB.
FRESH, SLICED BEEF LIVER 79c LB.
LIBBY BEEF PATTIES \$11.99 10-Lb. Box
H&G WHITING FISH \$3.49 5-Lb. Box
THE LIGHTER MEAL FLOUNDER FILLET \$2.99 LB.

- TABLERITE IGA FLAT HAMS \$1.69 7-9 Lb. Avg. Lb.
RIB CUT PORK CHOPS-Lb. \$1.89
CENTER CUT PORK CHOPS \$1.99 LB.
GRADE A FRYING CHICKEN LEG QUARTERS \$2.95 5-Lb. Pkg.
GRADE A FRYING CHICKEN SPLIT BREASTS \$5.95 5-Lb. Pkg.
5-LB. WINGS-\$2.95
TURKEY DRUMSTICKS \$1.99 5-Lb. Pkg.
SMALLER PACKS-\$5.9c Lb. CHICKEN LIVERS \$2.49 5-Lb. Pkg.
BY-THE-PIECE PARTRIDGE BRAUNSCHWEIGER \$49c Lb.

- HAMBURGER SIZE VLASIC DILL CHIPS \$1.29 32-Oz. Jar
POLISH, KOSHER, NO GARLIC, KOSHER DILL SPEARS \$1.39 32-Oz. Jar
VLASIC DILL PICKLES \$1.39 32-Oz. Jar
4 VARIETIES KRAFT BAR B' QUE SAUCE 99c 18-Oz. Btl.
LUNCH SPECIAL KRAFT SANDWICH SPREAD \$1.29 16-Oz. Jar
SALAD TOPPING KRAFT FRENCH DRESSING \$1.49 16-Oz. Btl.
SQUEEZE BOTTLE FRENCH'S MUSTARD 89c 16-Oz. Btl.
HEAT 'N EAT BUSH'S BAKED BEANS \$2 for \$1 Can

USDA CHOICE BONELESS SIRLOIN TIP ROAST \$1.99 Lb.

- 12-OZ. OLD CAROLINA-99c
IGA SLICED BACON \$1.69 1-Lb. Pkg.
MARKET STYLE-SLICED PLATTER BACON \$1.29 LB.
MILD OR HOT TENNESSEE PRIDE SAUSAGE \$1.89 1-Lb. Roll
WILSON CORN KING FRANKS 79c 12-Oz. Pkg.
REGULAR, JUMBO, BEEF, GIANT BEEF KAHN'S WIENERS \$1.79 1-Lb. Pkg.
BY-THE-PIECE FISCHER ROLL BOLOGNA \$1.39 LB.
REGULAR OR THICK SLICED KAHN'S BOLOGNA \$1.49 12-Oz. Pkg.

- PLAIN OR SELF-RISING MARTHA WHITE FLOUR 99c 5-Lb. Bag
MARTHA WHITE CORN MUFFIN MIX \$4 for \$1 7-1/2-Oz. Box
CARNATION'S CONTIDINA TOMATO SAUCE \$2 for \$1 15-Oz. Can
CHEF BOY-AR-DEE DOUBLE CHEESE PIZZA \$1.99 28-Oz. Box
ORANGE, GRAPE AND LO-CAL ORANGE WAGNER'S FRUIT DRINKS \$1.09 54-Oz. Can
LUCKY LEAF APPLE SAUCE \$2 for \$1 16-Oz. Can
FRENCH'S WORCHESTERSHIRE SAUCE 99c 10-Oz. Btl.

ARMOUR CANNED HAM \$4.99 3-Lb. Tin

- 4 VARIETIES TOTINO'S PARTY PIZZAS \$1.19 10-1/2-Oz. Box
REGULAR OR COUNTY STYLE-FRESH FROZEN MINUTE MAID ORANGE JUICE \$1.49 12-Oz. Can
IGA-FRESH FROZEN, IGA BRUSSEL SPROUTS, BROCCOLI SPEARS or CAULIFLOWER 59c 10-Oz. Box
FRESH FROZEN IGA LEMONADE \$2 for 89c 12-Oz. Can
CRISP SEA PAK ONION RINGS \$2.19 32-Oz. Bag
MILD, HOT, OR MEDIUM OLD EL PASO BURRITOS 69c 5-Oz. Pkg.
LIGHT AND CRISPY-VAN DE KAMP FISH STICKS or FILLETS \$1.29 8-Oz. Pkg.

DIET PEPSI, DIET PEPSI FREE PEPSI FREE, MOUNTAIN DEW PEPSI COLA \$1.19 8-Pack 16-Oz. Btls. Plus Deposit

PRESTONSBURG DELI

- FRESH BAKED DINNER ROLLS 99c Doz.
FRESH DAILY FRENCH BREAD 79c Loaf
WILSON'S 'CONTINENTAL DELI' HONEY BAKED HAM \$2.99 LB.
REGULAR/MUSTARD POTATO SALAD 89c LB.
DELI GRADE (White or Yellow) AMERICAN CHEESE \$2.49 LB.
KAHN'S PICKLE or OLIVE LOAF \$1.99 LB.
DELI MADE CHEESE POCKETS 35c Each

Chicken, Turkey, or Macaroni and Cheese OZARK VALLEY POT PIES 5/\$1 8-Oz.

FILLED MILK GENERIC CANNED MILK 3 \$1 12-Oz. Can

PLUS

2500 EXTRA LOW EVERY DAY MIRACLE PRICES

LOWEST PRICES IN EASTERN KENTUCKY!

We reserve the right to limit quantities on any item. No sales to dealers on any advertised item or any low or negative gross profit item.

PRICES EFFECTIVE SEPTEMBER HIGHLANDS PLAZA PRESTONSBURG

IS CHEAP-FOOD ISN'T! RE-THEN SAVE AT IGA!

RTED or WHITE
E CLOUD
T TISSUE

99¢

2, PLEASE.

Unscented
DETERGENT

99¢

\$1.00 OFF
LABEL

FAMILY-SIZE
47-OZ. BOX



SELF-RISING
WHITE LILY
CORN MEAL

69¢

5-Lb. Bag



October, Pinto, Pinto with Onions
Great Northern, or Mixed

LUCK'S
BEANS

39¢

15-Oz. Can



- KRAFT JAM, TOO!
KRAFT GRAPE JELLY 32-Oz. Jar \$1.29
- BREAKFAST TIME
AUNT JEMIMA PANCAKE MIX 2-Lb. Box 99¢
- BREAKFAST TIME
AUNT JEMIMA BUTTERLITE SYRUP 24-Oz. Btl. \$1.99
- BREAKFAST TIME
KELLOGG'S BRAN FLAKES 16-Oz. Box \$1.39
- GET WIDE AWAKE WITHOUT CAFFEINE
LUCKY LEAF APPLE JUICE 64-Oz. Btl. \$1.69
- COFFEE CREAMER
COFFEE MATE 11-Oz. Jar \$1.47
- REGULAR, ELECTRA PERK, ADC
MAXWELL HOUSE MASTER BLEND 39-Oz. Can \$6.99



- PRE-PRICED 89¢—3 VARIETIES
PILLSBURY BISCUITS 4-Pak 79¢
- PIZZA TOPPING
KRAFT SHREDDED MOZZARELLA 8-Oz. \$1.39
- SHARP OR EXTRA SHARP
KRAFT CHEDDAR CHUNKS 8-Oz. \$1.69
- KRAFT—SOFT
PHILADELPHIA CREAM CHEESE 8-Oz. 99¢
- CREAMY
SEALTEST COTTAGE CHEESE 24-Oz. \$1.49
- SMOOTH
SEALTEST SOUR CREAM 16-Oz. \$1.19
- FRESH
CITRUS HILL ORANGE JUICE 64-Oz. \$1.89

- WILSON'S—CANNED
EVAPORATED MILK 12-Oz. Can 2/\$1
- REAL PRICE—MRS. TUCKER'S
SHORTENING 42-Oz. Can \$1.29
- LUNCH BOX—ARMOUR
POTTED MEAT 3-Oz. Can 3/89¢
- 75¢ OFF LABEL
PALMOLIVE DISH LIQUID 48-Oz. \$2.29
- ASSORTED COLORS AND DECORATOR
SCOTT TOWELS Roll 77¢
- 15¢ OFF LABEL—SNUGGLE'S
FABRIC SOFTENER 64-Oz. Btl. \$1.69
- RATION OR CHUNKS—TRAIL BLAZER
DOG FOOD 25-Lb. Bag \$2.99

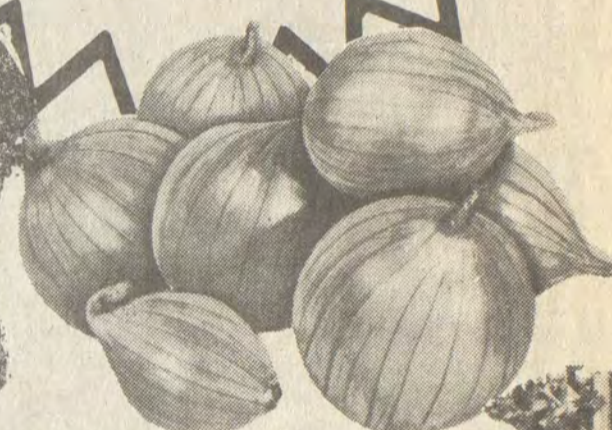


NEW CROP
MEDIUM

YELLOW
ONIONS

59¢

3-Lb. Bag



WISCONSIN CROP
WHITE
POTATOES

\$1.19

20-Lb. Bag



SUN-DRENCHED
RIPE, JUICY
CALIFORNIA
PEACHES

69¢

Lb.



KRAFT
4-STICK
PARKAY
MARGARINE

59¢

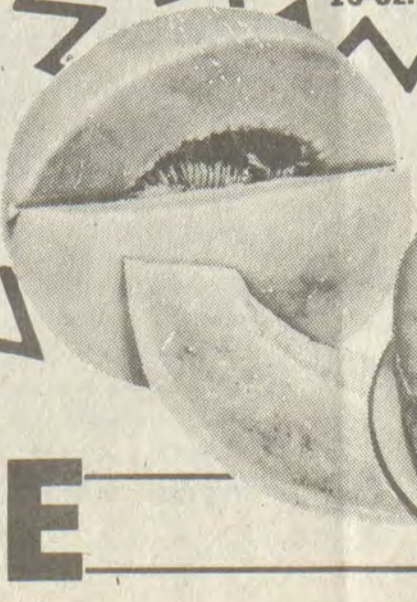
16-Oz. Pkg.



SELF-RISING
WHITE LILY
FLOUR

\$3.99

25-Lb. Bag



SMALLER (15-COUNT)
BUT SWEET AND RIPE
CALIFORNIA
CANTALOUPE

79¢

Each



PLUS A SALE

SALE

4 THROUGH SEPTEMBER 10
MAIN STREET
MARTIN

PRESTONSBURG
8 a.m.-11 p.m.
7 days a week

MARTIN
Sat.-Thurs., 8 p.m.-9 p.m.
Fri., 8 a.m. to 10 p.m.

WE WELCOME
FEDERAL FOOD STAMPS

Has Second Birthday



Stephanie Roper was shot to death in a suburban Maryland community; her assailants were picked up hours after the discovery of her body. As the September Reader's Digest reports, her parents understood immediately the importance of a water-tight conviction. "Don't do anything to violate their rights," her father told the arresting detectives. "We want them brought to justice."

The courtroom held surprises for the Ropers. While one defendant's former teacher and his prison minister were permitted to speak on his behalf, the judge ruled that Stephanie's character and her parents' grief were legally irrelevant. Further, the jury was permitted to find "mitigating" factors in determining sentence, including consideration of the guilty man's consumption of drugs and alcohol and the despair his execution would cause his family. The sentences both men received were light.

Roberta Roper convened the Stephanie Roper Committee to draw up a list of needed legislative reforms. They included the need to eliminate voluntary intoxication as a mitigating circumstance, to force courts to consider "victim-impact statements" and to make life sentence without parole an alternative for a convicted murderer.

She traveled the state, drumming up signatures and support before she confronted the Maryland General Assembly. And when she did testify before a joint General Assembly hearing, she brought with her 24 boxes of supporting petitions signed by more than 90,000 Marylanders. By the time the General Assembly adjourned that session, three Roper bills had passed and were subsequently signed into law.

"Now Roberta turned the attention of her growing, 7000-member organization toward the courtroom," the Digest article continues. "To make sure the courts were following the new laws and to provide support for victims' families,

KET Progam Explores World Food Crisis

Nearly one-fourth of the world's population faces starvation. "The Edge of Survival," encoring on Tuesday, September 24, at 9:00 p.m. on KET, sounds a note of hope for the world's poor and hungry millions by offering a number of unique solutions to the problem.

Filmed on location in India, Brazil, Ecuador, England, and the United States, this documentary includes interviews with Nobel Peace Prize-winner Mother Teresa of Calcutta; former U.S. Secretary of Agriculture Bob Bergland; and Swami Muktananda of Ganishpuri, who preaches self-determination. Also interviewed is a direct descendent of the Rev. Thomas Robert Malthus, who, 200 years ago, theorized that starvation is nature's check on population growth.

Key sequences include visits to the world's largest rice plantation, created by American billionaire Daniel Ludwig in the Amazon region of northeast Brazil; to Salsaydo in the central plateau of Ecuador, where the government at first promised and then denied the villagers 625 acres of good farmland; to two Indian fishing communities, where international aid worked against the impoverished fishermen; and Versova, where the women of the village took matters into their own hands and reversed poverty into prosperity.

This film, narrated and introduced by Fritz Weaver, won the 1982 World Hunger Media Award and was a top finalist in the 1982 American Film Festival. It is used as a training field by both the Peace Corps and Save the Children.

"The Edge of Survival" is produced by Wharton International Films, Inc.

Victim-Rights Groups Gain Ground

Roper Committee members wearing 'I am a Victim' buttons began attending murder trials."

The Roper Committee—now one of the largest victim-rights groups in the United States—continues to make an impact. Three additional laws it originally drafted became Maryland state law as of July 1, 1985. Victims of violent crime or their families can now request notification of parole hearings and decisions and can file updated impact statements. Judges need no longer sequester victims of violent crime after they testify and may prohibit the release of a victim's or witness's address and telephone number during a criminal trial.

HONORED WITH SHOWER

A miscellaneous shower honoring Miss Sharon Ann Branham and Mr. Gary Bailey was given on Saturday, August 17, with an evening cookout at the home of Mr. and Mrs. John Phillip Sammons. The couple was presented with lovely gifts from their many friends who gathered to express congratulations and best wishes. The party was hosted by Sharon Sammons, Paul David Wells, Tommi Sue Branham, Sarah Cross, Kathy Rust, Debbie Thomas, Betty Calhoun, and Stephanie Turner.

Wal-Mart To Open Soon in Shopping Center

The new Wal-Mart Store in the Prestonsburg Village Shopping Center will be opening very soon, according to Jim von Grep, director of Corporate & Public Affairs for Wal-Mart Stores, Inc. In making the announcement, von Grep said, "The store is almost complete and the final preparations are being made now for the store's grand opening, to be announced later."

"Wal-Mart is very excited about the realization of this project and looks forward to becoming active members of the community," he added.

The store will offer name-brand, quality merchandise in 36 departments. Low prices, along with friendly customer service, have made Wal-Mart one of the most successful discount chains in the country.

Wal-Mart has been recognized by Dun's Business Review as one of the top five best managed companies in the United States. In addition, the company was cited in the best seller book, "In Search of Excellence."

Charles G. Sparks, assistant manager of Wal-Mart's Winchester store, has been named manager of the Prestonsburg area.

HOSPITAL WORKER MOURNED

Our Lady of the Way Hospital wishes to express its deep sense of loss at the sudden, unexpected death of Mrs. Ella Robinson, who worked at the hospital for over 12 years as a nurse's aide. Her personnel file contains many letters from former patients thanking the hospital for the excellent care they received from her. Mrs. Robinson was a dependable employee who approached her work with spirit and warmth. She will be sorely missed by all those who worked with her.

To find the Weight Watchers meeting near you, call toll free **1-800-222-THIN** **WEIGHT WATCHERS** The most successful weight loss program in the world. Because it works. 9-4-21

PATHWAY SATELLITES
INC 122 and 80 in Martin, Ky.

"We have down to earth prices"
• ALL SATELLITE EQUIPMENT •

10 ft. Fiberglass dish system (5 yr. warranty on dish)
Screen dishes available
System includes: LNA receiver and polarizer
\$849 CASH AND CARRY
With 125 ft. of lead-in wire, including sales tax and installation charge \$1,139

PHONE: 285-3500

• We carry Drake, Uiden, STS, Bowman, Toki, Auto tech, Dx system, and Anderson
OPEN Mon.-Fri., 11 to 6. Sat., 10 to 4. Closed Sunday

LET THE SUN SHINE IN!

A Sunrise Sunroof... The Best Deal Under The Sun For Just \$99*

*Price does not include installation.

Hurry, the sun is set to shine!

Autoglass and upholstery

ASHLAND 1944 Greenup Ave. (606) 329-9988	LONDON 1233 S. Main St. (U.S. 25) (606) 878-0700	PRESTONSBURG Highway 23 (606) 886-8839
------------------------------------------------	-----------------------------------------------------------	----------------------------------------------

• Increases ventilation
• Adds value and beauty to your car
• Quality, precision-made
• Worry-free installation
• Fully guaranteed.

QUICK HOSPITAL COVERAGE

Time's Short Term Medical plans provide fast low cost "interim" coverage. If you're in between jobs, recently graduated or discharged from service.

You have a choice of coverage periods. And the policy can be issued on the spot. That quick? Of course, there's no coverage for pre-existing conditions. Interested? Call us for full details.

SWORD INSURANCE AGENCY
Ernest Sword
Phone (606) 874-2014
Allen, Ky.

WICKES
WICKES - Builders - Wickes Furniture Emporium - Lumber

WICKES Lumber

U.S. 23 NORTH - ALLEN, KY.

CHARGE IT!
Remodel your bath now! It's easy with a Wickes Revolving Charge. Visa and Mastercard also accepted.

Prices Effective thru Sept. 7, 1985

Home Remedy SALE

Savings on what it takes to make your house a home

GUARANTEE OF CUSTOMER SATISFACTION

We guarantee your satisfaction with any product you buy at Wickes Lumber. If you are not satisfied with your purchase, simply return the item together with proof of purchase, within 30 days of purchase and we will gladly exchange it or, if you prefer, refund your purchase price in full.

Premier Collection
Looking for out-of-the-ordinary plumbing fixtures? Look through the Premier Collection catalogs of Baths and Plumbing Fixtures. Enticing items for your lifestyle.

4-Piece White Economy Tub Surround • Decorative, easy to clean, textured surface 24⁸⁸ Each 304077	60" Economy Tub • Textured non-slip bottom • High gloss finish 69⁸⁸ Each 30117
2-Handle Bathroom Faucet w/Pop-Up Drain • Washerless, all brass construction • Smoked acrylic handles • 10-year warranty 24⁸⁸ Each	PVC Plastic Pipe • Lightweight plastic • Easy installation 1⁴⁹ 3"x10" Sch 30 PVC-DWV
17"x20" Vanity • Solid wood frame • Cultured marble top White or Walnut YOUR CHOICE! 59⁸⁸ Each	14"x20" Recess Mount Medicine Cabinet • Stainless steel frame with mirror 11⁸⁸ Each 302350

5-Piece Bath Set • Polished chrome set includes: robe hook; paper, toothbrush & tumbler holder; soap dish & towel bar 11⁸⁸ Set 302811	24" Jamestown Toilet Topper • Oak frame & doors • Handrubbed, honey oak finish • Antique brass hardware 109⁹⁹
36" Jamestown Cutback Vanity • Oak frame & doors • Handrubbed, honey oak finish • Self closing hinges • Top sold separately 229⁹⁹ Ea. 303183	Homespun Stripe • Decorative grass cloth panel with stripes • Washable with mild soap and water 11⁸⁸ 4"x8" Sheet 140686
Kennedy Skylights • Insulating double dome of unbreakable Lexan • Ultra-violet protective coating 44⁹⁵ 22"x22" Ea. 155682	Water Miser Toilet • Save 50% more water than conventional toilets • Made in America 39⁸⁸ Each 301230/231
Large Capacity Bath Vent • Quiet, heavy duty motor • Vents up to 75 sq. ft. 38⁸⁸ Each 345805	

Wickes Lumber

Wickes Has All It Takes To Build All You Need!

PAINTSVILLE PRESTONSBURG WICKES PIKEVILLE HAZARD

U.S. 23 NORTH - ALLEN, KY.

Prices Effective thru Sept. 7, 1985

Wickes Builders - Wickes Furniture Emporium - Lumber

VISA MasterCard

CHARGE IT!
Remodel your bath now! It's easy with a Wickes Revolving Charge. Visa and Mastercard also accepted.

Floyd County Public Schools UNIFORM CODE OF STUDENT CONDUCT

(Fourth in a Series)

C. TEACHERS

1. TEACHERS HAVE THE RIGHT TO:

- a. Expect the support and respect of students, parents, co-workers, and administrators.
 - b. Work in an educational environment with a minimum of disruptions.
 - c. Expect all assignments, including homework and make-up work, to be completed and turned in as assigned.
 - d. Remove any student, from class, whose behavior significantly disrupts a positive learning environment, for no more than one class period during which time the student will be placed under the supervision of the principal.
 - e. Safety from physical harm and freedom from verbal or written abuse.
 - f. Take action, necessary in emergencies, to protect their own person or property, as well as the persons or property of those in their care.
 - g. Provide input to aid in the formulation of policies that relate to their relationships with students and school personnel.
 - h. Provide input to committees designed with the responsibility of drafting policies affecting classroom teachers.
- #### 2. TEACHERS HAVE THE RESPONSIBILITY TO:
- a. Present subject matter and experiences to students appropriate to their course or grade level and to inform students and parents or guardians of achievement and/or problems.
 - b. Aid in planning a flexible curriculum which meets the needs of all students and which maintains high standards of academic achievement.
 - c. Evaluate students' assignments and return them as soon as possible.
 - d. Reward exemplary student work and/or classroom behavior.
 - e. Maintain necessary records of student progress and attendance as accurately as possible.
 - f. Recommend for retention in a class any student who fails to meet the basic standards for such class.
 - g. Maintain an atmosphere conducive to learning and good behavior and to exhibit an attitude of respect for students.
 - h. Support and respect co-workers, administrators, and parents.
 - i. Assist in the administration of such discipline as is necessary, and in a fair manner, to maintain order throughout the school.
 - j. Care for the equipment and physical facilities of the school.
 - k. Exhibit exemplary behavior in action and speech.
 - l. Exhibit neatness and cleanliness of personal dress and hygiene.
 - m. Follow and enforce rules and regulations of the Board of Education and individual school administration.

D. PRINCIPALS/DESIGNATED ADMINISTRATOR

1. PRINCIPALS/DESIGNATED ADMINISTRATORS HAVE THE RIGHT TO:

- a. The support of students, parents, and teachers in carrying out the educational programs and policies established by the school system.
 - b. Provide input for the establishment of procedures and regulations that relate to the school.
 - c. Safety from physical harm and written or verbal abuse.
 - d. Take necessary action in emergencies to protect his/her own person or property of those in his/her care.
 - e. Suspend and/or recommend the expulsion of any student whose conduct disrupts the educational process.
 - f. Administer the school environment to provide the proper learning atmosphere.
- #### 2. PRINCIPALS/DESIGNATED ADMINISTRATORS HAVE THE RESPONSIBILITIES TO:
- a. Implement, monitor, maintain, and evaluate all aspects of the educational program to improve learning and comply with the policies, regulations, and procedures, or laws of the district, state and nation.
 - b. Help to create and maintain an atmosphere which fosters the respect and consideration of the rights of all students, teachers, and parents.
 - c. Administer discipline fairly and equally, following the guidelines set forth herein, but in doing so use his/her own best judgement.
 - d. Exhibit exemplary behavior in action, dress, and speech.
 - e. Communicate with students and parents the overall school objectives and programs and to discuss with parents their child's achievement and/or problems.
 - f. Direct the school staff in developing, implementing, monitoring and maintaining a program which communicates this CODE OF CONDUCT to the school community.

(To be continued)

It's That Time
of Year Again
To Have a Big...

MAD, MAD, MAD Sale

AT THE FEDERATED DEPARTMENT STORE

and the ALL-NEW

FEDERATED DISCOUNT FURNITURE STORE

Martin, Ky.

At The FEDERATED DEPARTMENT STORE

FINAL SUMMER CLEARANCE SALE

At The ALL NEW FEDERATED DISCOUNT FURNITURE STORE

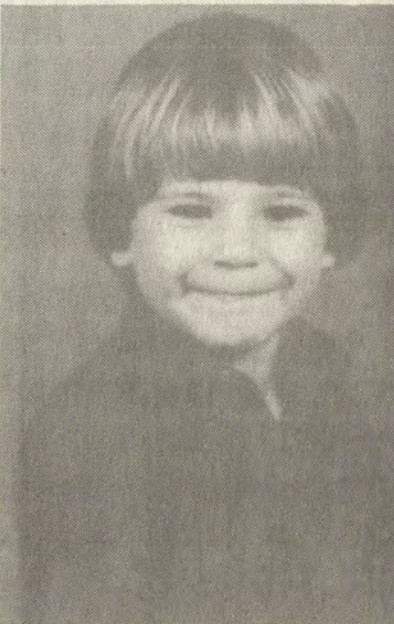
- You Can Buy A Living Room Suite that was \$1600, Now for \$1177
- Broyhill Bedroom Suite was \$1,000, Now for \$799.
- Balance of Washers and Dryers at Near Wholesale Prices

Easy Credit Terms For Qualified Buyers

- Racks of Merchandise \$5.00 (Other racks 50-60% OFF)
- Special Purchase of Famous Name Brand Fall Sportswear 60% OFF
- All Summer Ladies' Shoes & Sandals 70% OFF
- Ladies' Lee Jeans \$15.88
- Ladies' Calvin Klein & Gloria Vanderbilt Jeans \$19.88
- Ladies' Levi Jeans \$16.88
- Chic Jeans \$19.88
- 1 Group Men & Boy's Jackets \$10.00

Stores Open Until 8:00 Each Night This Week For This Big Sale!

Has Sixth Birthday



Jamie Sean Burke, son of Pauletta Burke, of Prestonsburg, and James Burke, of Allen, celebrated his sixth birthday with a party at the Archer park skating rink, Aug. 16. Many friends and relatives were there to wish him a happy birthday. Among the guests were his sisters, Andrea and Amanda Burke, also Keith, Greg and Missy Slone, Amy Howard, Rhonda Burke, Misty Stanford, Wendell, Brenda and Scott Burke, Marty and Joshua Hughes, Amanda Hunt, Brad Blair, Joshua and Lavena Montgomery, Marcy Dials, Michele Baker, Selina Powers, Christie Stevens, Christy Raymone, Brandie Ely, and Kevin Huddleston. Jamie is the grandson of Doug and Martha Burke, of West Prestonsburg, and Arlene Blair, of Paintsville.

Heart Association Urges Right Diet

From September 8 through 14, the American Heart Association is sponsoring a national nutrition event called American Heart's Food Festival. It is designed to focus public attention on the importance of adopting a low-fat, low-cholesterol diet. These items have been found to be directly linked to health, and are a major underlying cause of heart disease. This information is particularly important to Kentuckians since cardiovascular disease is the number one cause of death in the state, killing nearly one-half of all Kentuckians who died last year.

OFFICE SPACE FOR RENT

Downtown Martin, over Dollar Store.
Formerly occupied by Stumbo and Caudill
Law Firm.
Call 285-3090

FOR SALE

Two-story, three-bedroom house
with three acres. 500 ft. off four-
lane at Watergap. \$50,000.
Call 886-8579

OFFICE SPACE FOR RENT

Downtown Prestonsburg
Over Clyde Burchett's Jewelry Store.
886-2734 or 886-2412

CARPET CLEANING By PROFESSIONAL SERVICES



IF QUALITY IS YOUR FIRST CONCERN WE'VE BUILT OUR REPUTATION ON IT!

We Guarantee:

- Quality Cleaning at reasonable rates
- Extra Fast Drying
- We move and protect all your furniture
- Over 18 years of Dependable Service

CALL 886-6488



Portraits with quality and beauty you can see!

Preserve today with
Heirloom color portraits.
Package includes: 1(8x10),
2(5x7s) and 10 wallets...



Limited Time Offer
Regular \$8.95 package.

\$500/95¢
ONLY PLUS DEPOSIT
FOR A TOTAL PACKAGE PRICE OF \$5.95

Traditional backgrounds only.
We specialize in family groups and children.



R. H. HOBBS STORE

Prestonsburg, Ky.

Tuesday, Sept. 10
10-1 2-5

Wednesday, Sept. 11
10-1 2-4

We select the poses (2). A 95¢ deposit required for each photo package plus \$1.00 sitting fee for each additional subject. Additional portraits can be purchased.



HURRY TO COLORAMA'S

SEPTEMBER SUPER SAVINGS



COUPON
WITH THIS COUPON

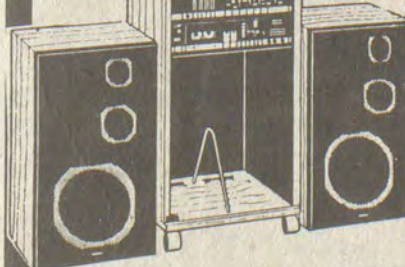
ALL MODEL T.V.'S, VCR'S, & STEREOS

FIRST WEEK'S RENT \$5.00

2 weeks minimum rental

Limit one coupon per rental; coupon cannot be reproduced. Coupon must be redeemed at time of delivery and payment of two week's rental. Offer good only through participating dealers. Offer void where prohibited, taxed, or otherwise restricted.

Offer expires September 30, 1985



* How Rent To Own Works *

Rent to own is an easy-affordable way to ownership of quality name brand televisions, stereos, major appliances, and furniture. By eliminating a down-payment, security deposit and credit approval, ownership can be obtained simply by paying a small weekly or monthly payment. At the completion of your rental agreements, you own the item. It's that easy.

COLORAMA RENTAL CENTER

886-6211
Prestonsburg

Call Today
Get It Today

432-0072
Pikeville

OPEN DAILY 9 TO 9, SUNDAY 11 TO 6

YOU CAN'T DO BETTER THAN

Kmart®

the Saving Place®

Sale Ends Sept. 7, 1985

SUPER SALE

DOUBLE COUPONS



Here's How To Save BIG!

25¢ OFF Manufacturer's Coupon
25¢ OFF Kmart® Matches Coupon Value
50¢ OFF Total Savings To You

Redeem your manufacturers' coupons at Kmart® now thru Saturday and double its value. Double redemption applies to those items in stock and does not include tobacco, beer and wine and free coupons. Total redemption cannot exceed the price of the item. Limit one manufacturer's coupon per item.

*Double coupons redeemable only at Big Sandy Village, Route #3 North Mayo Trail. Limit 2 of any one item per customer.



8.77 Box Of 12 Our 9.72

Redman® Chewing Tobacco
Foil pouch flavor fresh chewing tobacco. Box of 12. Save!



5 FOR \$1 Our Reg. 34¢ Ea.

Assorted Candy Bars
Popular favorite brand candy bars for delicious treats. Save!



97¢ Our 1.47

Henri's® Salad Dressing
16-oz. jar salad dressing in assorted flavors. Save!



4.66 Our 6.97

Kodak® Cassette Tape
VHS video cassette tape for 2-4-6 hours recording time.



1.58 Our 2.17

28-Oz.® Suave® Shampoo
Choice of many formulas for cleaner, healthier hair. 28-oz.®



83¢ Our 1.28

Aqua Net® Hair Spray
All purpose hair spray in regular, super or extra super hold.



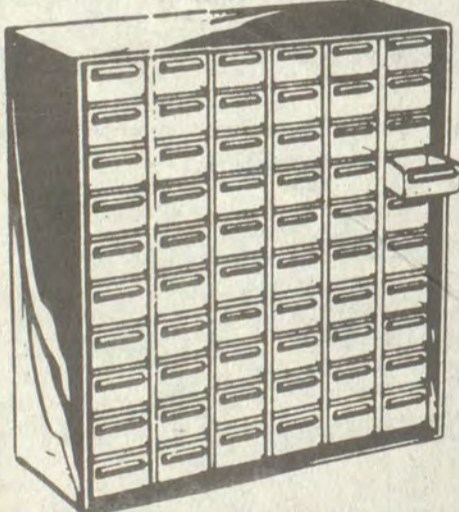
48¢ Our 73¢

16-Oz.® Rubbing Alcohol
Isopropyl rubbing alcohol, 70%. Disinfectant for bath, sickroom.



\$49 Each - Our 69.88-72.88

Library Wall Units
Open shelf or sliding door unit of oak-finish particleboard.



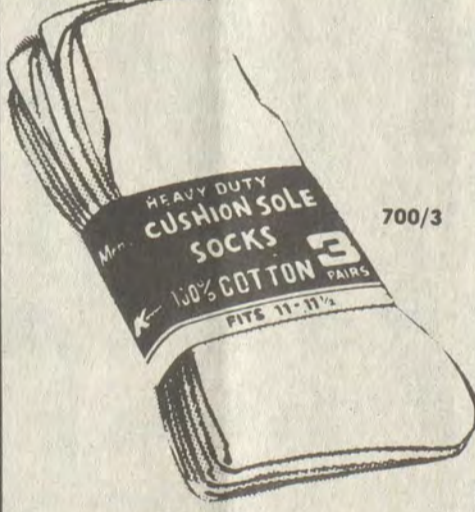
8.97 Our 13.97

60-Drawer Parts Cabinet
Organize small parts in plastic drawers. Ideal for work area.



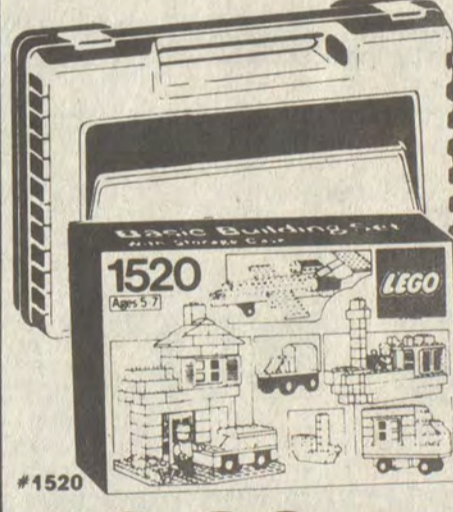
2.99 Our 4.97

50 Trash Bags
20-30-gal. size bags. 1.5-mil.



1.97 Our 2.97

Men's 3-Pr. Pkg. Work Socks
Heavy duty cushion sole cotton socks. Men's sizes. Save now!



12.88 Our 16.96

LEGO® Basic Building Set
Building set complete with storage case. Ages 5-7. Save!



46.97 Our 58.88

"Ashcraft" 7-Pc. Cookware
7-pc. aluminum cookware set with SilverStone® interior. Save!

Brand Names we offer the best

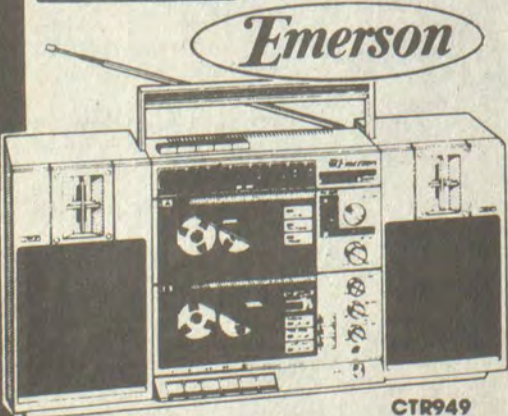
Discount Prices on quality merchandise

Layaway Plan all departments

Mastercard Visa happily accepted

Satisfaction Always for over 21 years

Service • Value Satisfaction that's our promise



\$79 Our \$99

Emerson® Portable Radio
"High speed" dual cassette AM/FM radio with continuous play.



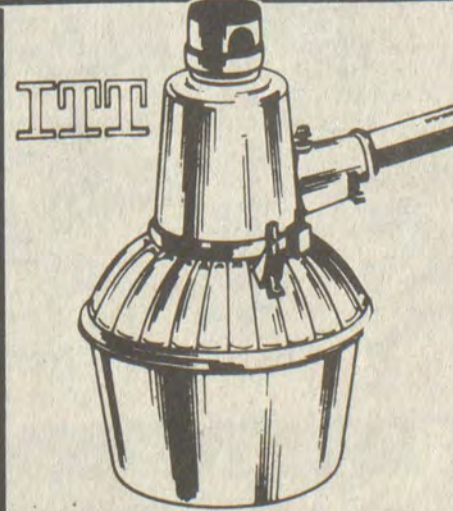
16.88 Our 21.97

26" Rosewood Table Lamp
Wood block table lamp with fabric covered vinyl shade.



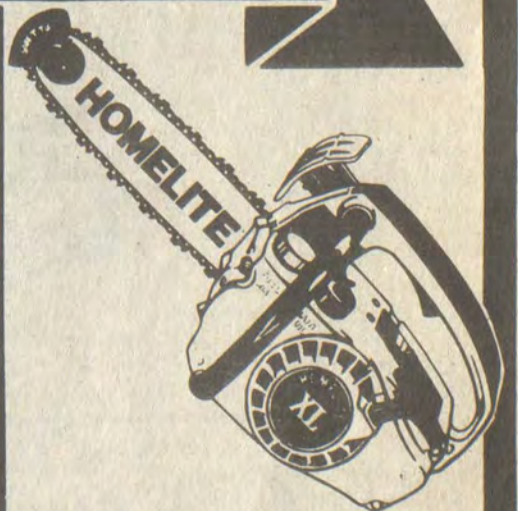
99¢ Our 1.29

Murphy® 16-Oz.® Oil Soap
Cleans everything. For safe easy household cleaning.



27.97 Our 34.97

Mercury Vapor Yard Light
175-watt yard light turns on at dusk, off at dawn, automatically.



119.88 Our 144.88

Homelite® 14" Chain Saw
With safety tip, anti-kick back feature, built-in chain tension.

PIKEVILLE STORE ONLY

POST LABOR DAY

SPECIALS

SALE ON ALL CARS IN INVENTORY

Yes, folks, we at ED WALTERS are sell-a-brating by giving special deals on all cars in inventory. The carrier strike is over and our inventory gets better every day.

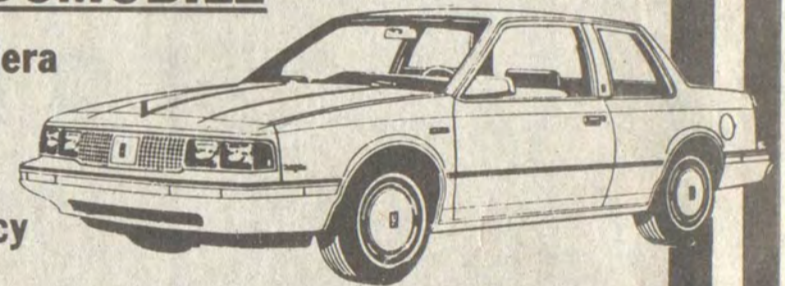
We have many 85's in stock that we will give you a special discount on plus finance most of them at 7.7% APR.

NOW is the time to buy as the '86's are beginning to arrive and keep in mind the prices have gone up and there will be NO special rate on '86's.

Models Included In 7.7% Finance Rate

OLDSMOBILE

- Cutlass Ciera
- Cutlass Supreme
- 98 Regency



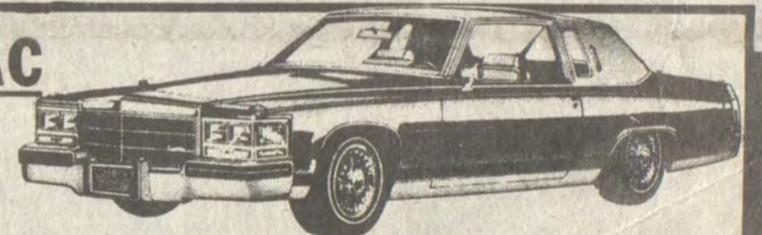
PONTIAC

- 1000 • Sunbird
- Firebird • 6000
- Grand Prix
- Bonneville
- Parisienne



CADILLAC

- DeVille (Front-Wheel Drive)
- Cimarron
- Fleetwood (Front-Wheel Drive)



Now Is The TIME TO BUY!

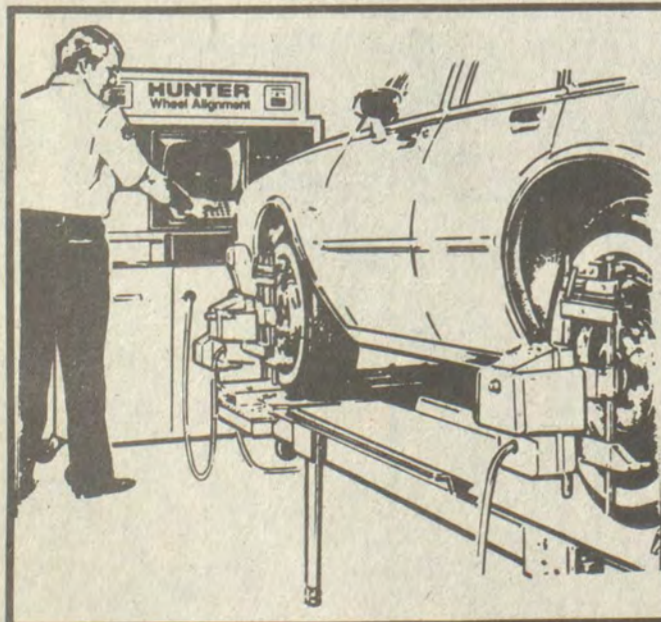
THIS WEEK AT ED WALTERS

GMC

- Light Duty Trucks (Full-Size 2 and 4-Wheel Drive)
- Cargo Vans
- Rally Vans



SERVICE AND PARTS DEPARTMENT



COMPUTERIZED FRONT-END ALIGNMENT

Prices Start At **\$26⁰⁰**

No Appointment Necessary

LINE-A-BEDS

On All S, C & K Series Trucks

\$298⁰⁰ Tax Included

• 24-HOUR SERVICE • Place Your Order Today

SPECIAL Lease Rates On All Models Above

Great Finance Rates!

Great Service!

Great Deals!

Now At:

ED WALTERS MOTOR CAR AND TRUCK COMPANY, INC.



430 SOUTH LAKE DRIVE
PRESTONSBURG, KY.
PHONE: 886-3811
OPEN 8 TO 6, MON.-FRI.
8 TO 5, SATURDAY

See One of These Salesmen: DELMAR BALDRIDGE, TOM ED MUSIC, BUCK LAYNE or TONY CASTLE