



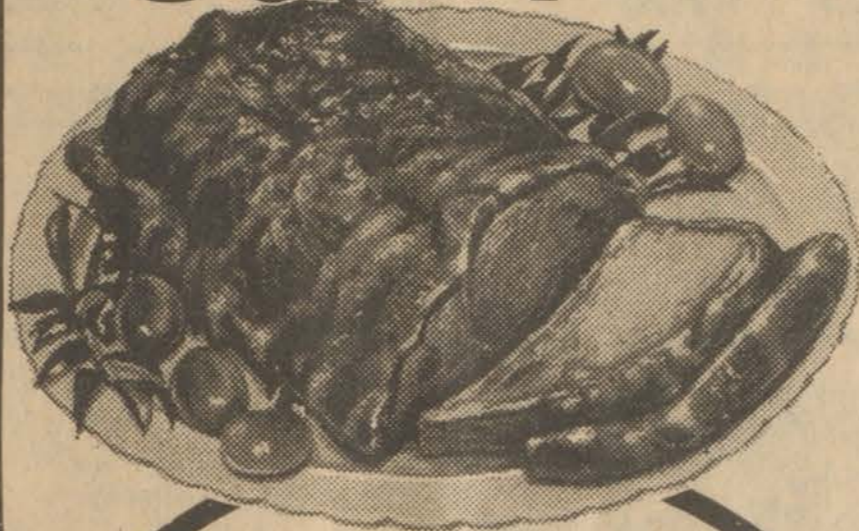
PRICES EFFECTIVE THROUGH JANUARY 13th

MINIMUM PURCHASE MAY BE REQUIRED

Loin End Pork Roast 99 ¢ lb.	Country Style Spare Ribs 99 ¢ lb.
---	--

Family Pack Pork Chops 99 ¢ lb.	Fischer's Sliced Bologna 139 1 lb. pkg. Regular or Thick Sliced
--	---

THIN CUT PORKlb.	\$1.49
TOP LOIN PORK CHOPSlb.	\$1.39
PORK LOINS, Halveslb.	\$1.09 Sliced Free
FAMILY PACK PORK CHOPSlb.	99 ¢



Whole
Pork Loins
99¢
lb.
SLICED FREE

Bleach
Clorox
69¢
128 oz. jug
Limit one

AS ADVERTISED ON T.V.!

Laundry Detergent
Wisk
129
32 oz. bottle

Zesta Saltines
59¢
16-oz. box

Golden Whole Kernel or Creme
IGA Corn
4 \$**1**
For
Limit four - 16 oz. can

AS ADVERTISED ON T.V.!



Cut Green or Shelley
Bush's Beans.....15 oz. can **3/89**¢
White or Golden
Bush's Hominy.....14.5 oz. can **5/\$1**
Bush's Chili Hot Beans.....15 oz. can **3/89**¢
Showboat
Pork 'n Beans.....14.5 oz. can **3/79**¢

Royal Guest
Sliced Peaches
59¢
29 oz. can

AS ADVERTISED ON T.V.!

FROZEN

IGA Orange Juice 69 ¢ 12 oz. can	AS ADVERTISED ON TV 6 Varieties Banquet Dinners 59 ¢ 11 oz. box
---	--

Tropicana Pure Orange Juice 129 64 oz. bottle	Old Style or Buttermilk IGA Biscuits 99 ¢ 10 ct. - 6 pack
--	--

TableFresh
Yellow Onions
49¢
The Big 5 Lb. Bag

TableFresh TOMATOESlb.	39 ¢
TableFresh Temple ORANGES10 For	99 ¢
TableFresh Jonathan APPLES3-lb. bag	89 ¢

Shortening
Crisco
169
3 lb. can
Limit one with coupon & \$10.00 purchase
Offer good at IGA Foodliners thru Sun. Jan. 12th.

IGA COUPON
5CS169 626

Personal Touch

IGA
Ice Cream
109
half gallon (all flavors)

Check Our Discount Prices ON ALL PRE-PRICED ITEMS!

- Bread • Sweet Goods • Magazines
- Batteries • Fischer's Nuts
- Leggs Panty Hose • House Wares
- Potato Chips • Little Debbie's

AT IGA! WE SHOW YOU THE DIFFERENCE

THOMPSON'S IGA FOODLINERS

• Prestonsburg • Martin

STORE HOURS:
Prestonsburg—Mon. thru Sun., 8a.m. - 8p.m.
Martin—Mon. thru Sat., 8a.m. - 8p.m.
Sunday, 10a.m. - 6p.m.

MAD, MAD, MAD SALE

**THIS THURSDAY, JAN. 10, AT THE FEDERATED STORE IN MARTIN, KY.
EVERYTHING WILL BE PLACED ON SALE • 8 A.M.-7 P.M.**

ALL LADIES' AIGNER BOOTS 50% OFF	ALL LADIES' BASS BOOTS 50% OFF	MEN'S INSULATED COVERALLS SALE \$19⁸⁸ WITH SMALL FLAW	MEN'S COVERALLS \$14⁸⁸
BOBBY BROOKS, HANG 10, CATALINA LADIES' SPORTSWEAR HALF PRICE	CHILDREN'S GIGI COATS \$25	ALL AIGNER SHOES AND HANDBAGS ON SALE	ALL SAMSONITE LUGGAGE 1/2 PRICE
BRUCE JENNER TENNIS SHOES REG. \$30 ON SALE \$13⁸⁸	ALL MEN'S AND BOYS' WINTER COATS & JACKETS HALF PRICE	LADIES' AIGNER COATS ON SALE	ALL LADIES' COATS (EXCLUDING AIGNER) HALF PRICE

**IT'S THE BIG MAD, MAD, MAD SALE AT THE FEDERATED STORE IN MARTIN, KY.
Also Visit The Federated Furniture Store—Everything To Be Sold During The Month Of January—No Charge Or Layaways—This Promises To Be The Biggest Sale Ever!**



LOOKING BACKWARD...The Wheelwright Theatre crowd on September 21, 1946 when "Our Hearts Were Growing Up" was the screen attraction.

(Photo by Russell Lee, courtesy of Alice Lloyd College Photographic Archives.)

Medic Alert Emblem Speeds Treatment

A few weeks ago a thirty-five year old unconscious female was brought into the emergency room at Long Beach Memorial Hospital.

"Emergency personnel quickly noticed the Medic Alert emblem on her wrist with the 'diabetes' imprint. A call to Medic Alert's 24-hour answering service provided additional information which saved the physician and emergency nurse considerable time," replied Malcolm C. Todd, M.D., a doctor at the hospital who also is a former President of the American Medical Association.

"The time factor involved with the gathering of a patient's medical history can be particularly costly in terms of dollars. In emergencies, where the patient is unable to speak or communicate, the time saved by obtaining vital data through Medic Alert's 24-hour emergency information service can make the difference between life or death," Todd said.

"The emblem also saved her or the insurance carrier money caused by unnecessary testing and studies," Todd added.

Medic Alert, formed twenty-three years ago, is nonprofit, charitable and tax-exempt. Its mission is to provide a complete emergency identification and information service to everyone with a hidden medical condition ranging from allergies to medication, heart problems, epilepsy and diabetes. These are only four of the more than 200 reasons some 1.5 million people worldwide wear the Medic Alert emblem.

The emblem is worn either around the neck or on the wrist. On the reverse side is an engraved 24-hour emergency phone number, the wearer's hidden medical condition and an ID number. Emergency personnel, trained to look for alerting types of ID when faced with a situation where the patient is unable to communicate, can quickly obtain vital information through Medic Alert's central registry.

A wallet card is issued annually to each

member which carries additional information about the patient.

"The physician can play an extremely important role in helping to bring the Medic Alert system to the attention of those patients who do have a hidden medical condition," Todd said.

"One of Medic Alert's primary objectives is to support the physician in his work to provide the best health care possible," Todd stated.

The Medic Alert organization says that there are over forty million Americans, or roughly one out of five people, who have a hidden medical condition. They urge those people to write for information to Medic Alert, Turlock, California 95380 or call a regional office in New York City, Chicago, Orlando or Salt Lake City.

Prater Creek Homemakers Enjoy Party, December 17

The Prater Creek Homemakers held their annual Christmas party in the school lunchroom, December 17. Gifts were exchanged and refreshments were furnished by all members. The business meeting was not held, but county dues were collected for the following year.

Drawing was held for the Fan Quilt made by the homemakers. The winner was Phillip Ray Newsome, of Daniels Creek.

Members enjoying the party were Belle Jones, Susan Akers, Toda Tackett, Kathryn Akers, Wanda Hall, Pauline Akers, Willena Campbell, Sandra Roberts, Doris Akers, Sereda Brown, Mona Boyd, Polly Robinette, Lucille Akers, Ellen Campbell; Gail Taylor, Emodel Boyd, Marie Conn, Angie Hall, Loretta Conn, Glenna Childers, Jo Akers, Maggie Conn, Ruth Slone, agent Frances Pitts and guests Sylvia Hall and Debbie Tackett.

The next regular monthly meeting will be January 23, at 7 p.m.

First Birthday



Stephanie Kay Stumbo, daughter of Sharon Johnson Stumbo, celebrated her first birthday Friday, January 4, at the home at Risner of her grandmother, Mrs. Goldia Johnson, widow of Henry Johnson.

Others attending were Nathan and Faye Johnson, Kerry Lynn Johnson, Mike and Etta Hunt.

Wayne Supply Starts Work on New Facility

Wayne Supply Company announces construction of its new Ashland facilities. Located on a 100 plus acre tract on new U.S. Highway 60 at Cannonsburg, the facilities are easily accessible via U.S. 60 Highway from downtown Ashland. Interstate I-64 is one mile to the south.

The new construction of approximately 100,000 square feet will house 12 bays for repair and service with the most current repair and service tooling equipment. Other areas of service will include a paint shop, weld shop, undercarriage rebuilding shop and small equipment repair shop.

Construction began in September, with occupancy scheduled in early 1981.

Rex Wright Resigns W. P'burg Pastorate, Forms Association

Henry H. Wright, pastor of the First Assembly of God West Prestonsburg submitted resignation by pulpit announcement, December, 30. The resignation becomes effective March 31.

The Rev. Wright, who has served five years as pastor of the West Prestonsburg church, also announces the incorporation of the Henry H. Wright Wings of Healing Evangelistic Association, a non-stock, non-profit corporation, located at Rt. 2, Auxier Rd., Spradlin Branch, Prestonsburg.

The association he said, is charismatic-oriented with free Gospel Ministers and is open for revivals, teaching and speaking engagements.

The Rev. Wright has been active in the ministry for 19 years.

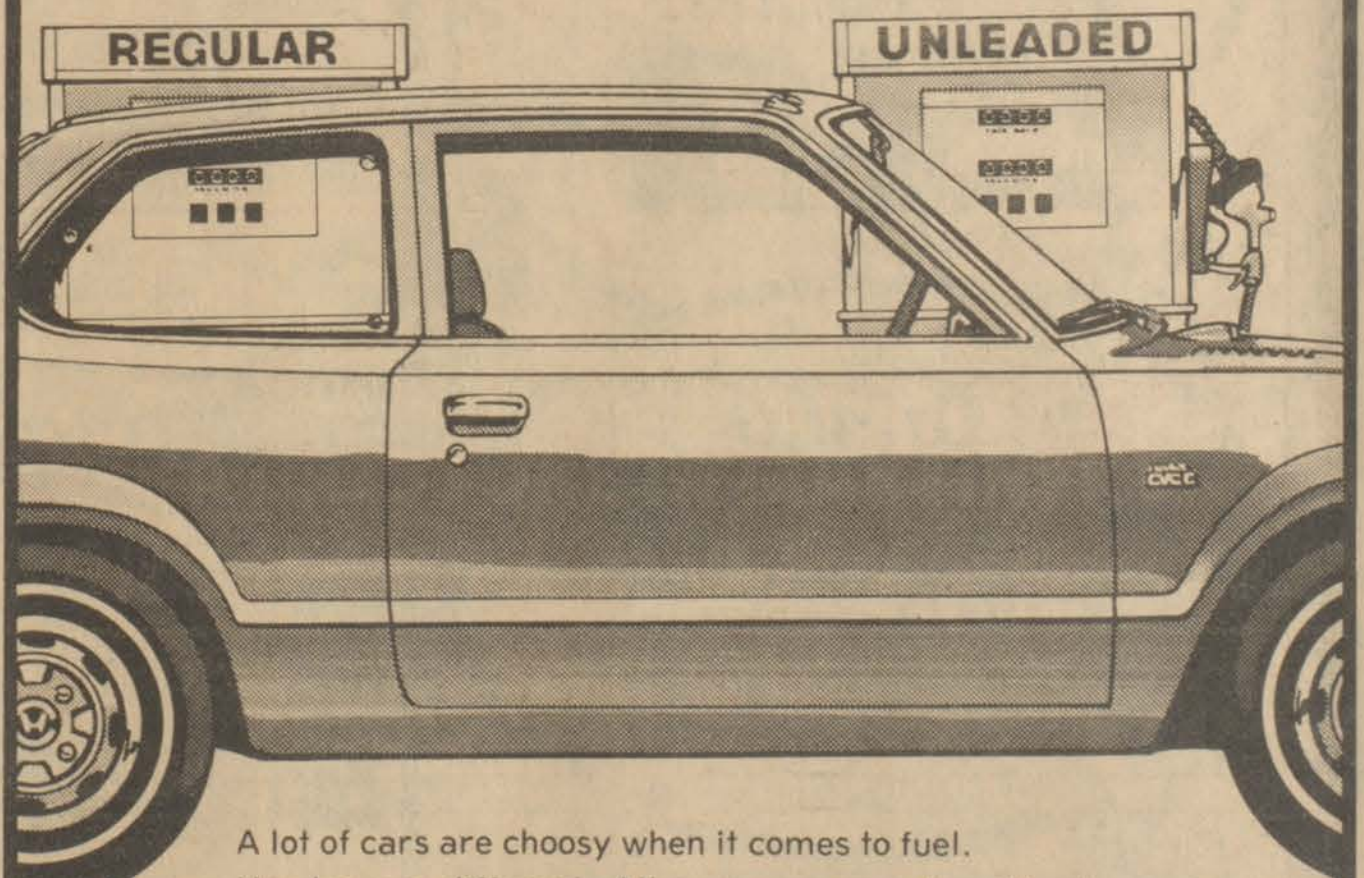
FOR SALE

- 1974 TOYOTA CELICA
 - 1975 CADILLAC ELDORADO
 - 1976 FORD L.T.D.
 - 1977 FORD COUNTRY SQUIRE STA. WAG.
 - 1978 DODGE WARLOCK PICKUP
- ALL UNITS WILL BE SOLD AS IS.

For information call:
Doug Woody or Steve Arnett at The Bank Josephine

Phone 886-9101

The Hondas are coming!



A lot of cars are choosy when it comes to fuel.

Hondas are different. All our cars operate without a catalytic converter, so you can take your pick of unleaded or regular gasoline.

Town & Country Honda will soon have its Grand Opening . . . Be looking for our Grand Opening Announcement.

Town & Country Honda is located on Lancer-Water Gap Road, Prestonsburg, Kentucky.

HONDA

OPEN DAILY 9-9 • SUNDAY 1-6



Kmart
THE SAVING PLACE



Kmart® ADVERTISED MERCHANDISE POLICY
Our firm intention is to have every advertised item in stock on our shelves. If an advertised item is not available for purchase due to any unforeseen reason, Kmart will issue a Rain Check on request for the merchandise to be purchased at the same price whenever available or will sell you a comparable quality item at a comparable reduction in price. Our policy is to give our customers "satisfaction always."

WED. THRU
SUNDAY

PRICE BREAKERS



58¢

Toilet Tissue
4-roll package, 400, 1-ply sheet rolls. White only. 4.5x4.5" Sheets



2.00

Save!
Fab® Laundry Detergent
All-temperature, with lemon freshened Borax®.
Net Wt. 84-Oz. Box



JOY

2/\$1
12-Oz.



2/50
For

Double-Panel Briefs
Our 87"-96", Acetate or acetate/nylon in white or beige. Women's 5-10.



2\$3
For

Carpet Deodorizer
Our Reg. 2.07 Ea. Just powder and vacuum. Freshens carpet, room. 20-oz.*
*Net Wt.



\$3

Padded Scrapbook
Our 3.88. Color choice. Our 68" Ea. Tablets, 2/\$1.



\$3 to \$9

FASHION TOPS
A super selection of styles, colors and fabrics... at Kmart savings. Not all styles in all sizes.



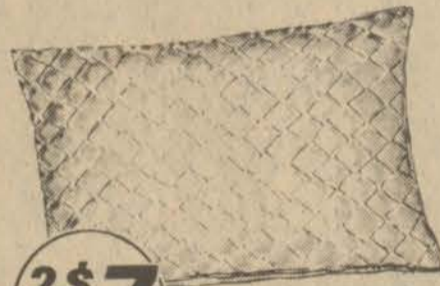
1.00

Our 1.22. Ten 1-oz.* packages of hot cocoa mix.
*Net Wt.



3\$1
For

Story Books For Children
Our Reg. 58" Ea. A collection of 128 pg. paperback story books for kids.



2\$7
For

Satin Bed Pillows
Our Reg. 4.97. Quilted satin, polyester fiberfill.



2\$1
For

Cadbury's Candy Bars
Our Reg. 63" Ea. 3-oz.* bars in popular flavors.
*Net Wt.



3\$1
For

28-oz.* Ammonia Cleaner
Our Reg. 42" Each. Parson's® clear, sudsy or pine scented household cleaner.
*Fluid Oz.
Copyright © 1980 by Kmart Corporation



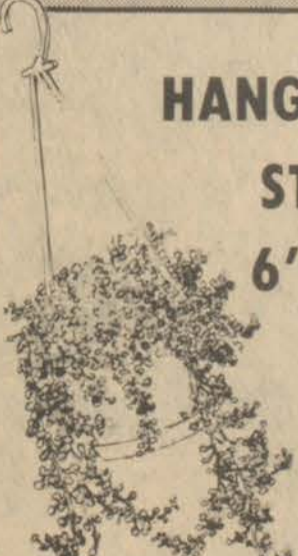
2\$5
Pkgs.

Manilla File Folders
Our Reg. 3.97. Pkg. Choice of 48 letter-size folders or 36 legal-size folders. Save!



1.00

Box of 14
Our 1.48. All-occasion, boxed, 14 greeting cards.



HANGING AND STANDARD 6" PLANTS

2 for \$5



\$14

Digital Quartz Clock
Our 19.88. Fits on, under or in dash. 12-volt. Save!
Easy Installation
SAVE 5.88



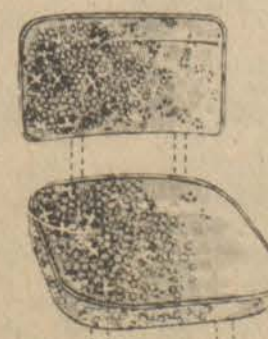
3.88
Each

Thermal Wear
Men's in Raschel-type cotton, women's in polyester/cotton.
Shirts and Pants Sold Separately



2\$3
For

12-Volt Sealed Beams
Select 4000 or 4001 sealed beams. Save. 6014, Sealed Beam, \$2



\$4

Seat, Back Kit
Our Reg. 6.46. Chair replacement kit. Save!

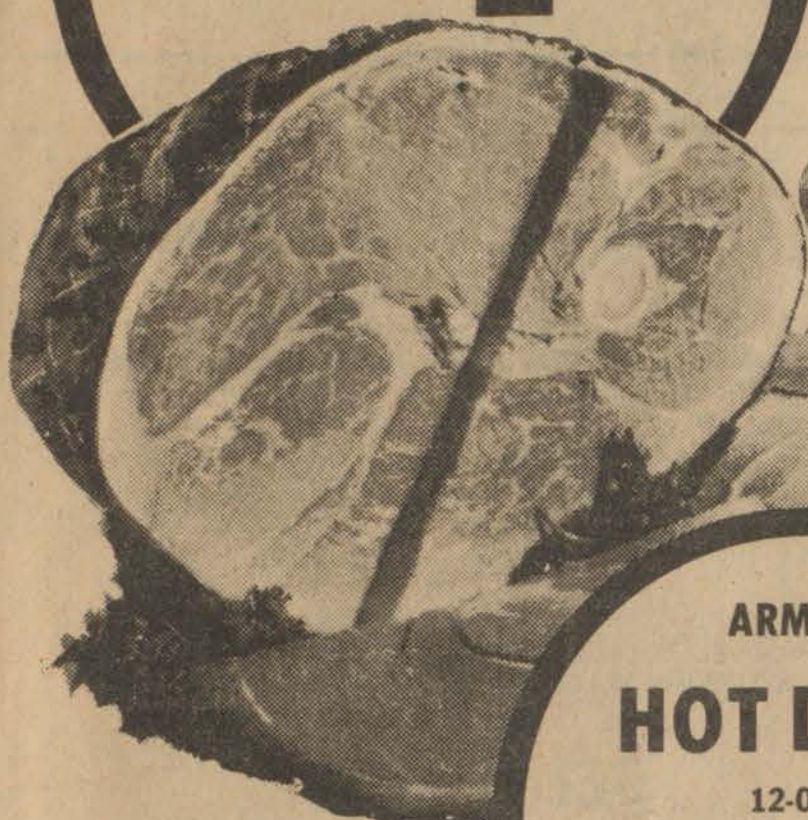
There are Reasons more people shop here...

FARMER'S MARKET

OPEN 8 TILL 10 SEVEN DAYS A WEEK

PHONE 478-5275 • HAROLD

FISCHER'S
Semi-Boneless
HAM
Halves or Whole
\$1.29
Lb.



PRICES
EFFECTIVE
THRU
SUNDAY,
JAN. 13.

ARMOUR
HOT DOGS
12-Oz. Pkg.
89¢

BONELESS
CHUCK ROAST
\$1.69
Lb.

CUBE STEAK
\$1.99
Lb.

BONELESS
STEW BEEF
\$1.79
Lb.

MEAT SPECIALS

BONELESS ARM ROAST	Lb.	\$1.89
BONELESS FAMILY STEAK	Lb.	\$2.09
BONELESS CHUCK STEAK	Lb.	\$1.89
FRESH GROUND CHUCK	Lb.	\$1.69
FISCHER'S CHUNK BOLOGNA	Lb.	98¢
JOWL BACON	Lb.	79¢
FISCHER'S BONELESS HAM SLICES	Lb.	\$1.99
FISCHER'S BONELESS HAMS	Halves or Whole Lb.	\$1.79

MAXWELL HOUSE
10-OZ. jar
INSTANT COFFEE
(One Please)
\$4.49

ZESTA
CRACKERS
1-Lb. Box
59¢

BREEZE
GIANT SIZE
SOAP POWDER
38-Oz. Box
\$1.59

ARGO
PEAS
303 Cans
4/\$1

WESSON
OIL
38-Oz. Btl.
\$1.49

SHOWBOAT
PORK & BEANS
14-Oz. Cans
4/\$1

DEL MONTE
WHOLE KERNEL
OR CREAM STYLE
CORN
303 Cans
3/\$1

HUNT'S
FRUIT COCKTAIL
15-Oz. Cans
2/89¢

HUNT'S
PEACHES
29-Oz. Can
65¢

HUNT'S
TOMATO JUICE
46-Oz. Can
59¢

SILVER MIST
SELF-RISING
FLOUR
25-Lb. Bag
\$3.99

ROSE'S
CHUNK DOG FOOD
50-Lb. Bag
\$6.99

WAGNER'S
ORANGE DRINK
32-Oz. Btls.
2/79¢

FARM BEST
ICE CREAM
DOODLES
FUDGSICLES
OR POPSICLES
12-Ct. Pkg.
99¢

CHARMIN
BATHROOM TISSUE
4-Roll Pkg.
89¢

U.S. No. 1 IDAHO
POTATOES
10-Lb. Bag
\$1.29

FRESH
LETTUCE
3 HEADS / **1**

BANANAS
5 LBS. / **\$1**

WE RESERVE
THE RIGHT
TO LIMIT
QUANTITIES

RED OR
YELLOW DELICIOUS
APPLES
3-Lb. Bag
79¢

FARMER'S MARKET

Open 8 till 10, Seven Days a Week PHONE 478-5275 HAROLD

Committee Members Named For Senate

Ten of the fifteen Senate committees which study and make recommendations on bills introduced to the legislature will have new chairmen during the 1980 General Assembly.

Historically, the House and Senate have organized membership into committees on the first day of the legislative session. This year, however, the Legislative Research Commission released a summary of the Senate's committee membership before the new year.

Committee members were appointed by Senate leadership which includes President-Lt. Gov. Martha Layne Collins; President Pro Tempore Joseph W. Prater (D-Vine Grove); Assistant President Pro Tempore Joe Wright (D-Harned); Democratic Floor Leader John M. Berry Jr. (D-Turners Station); Democratic Whip Lowell T. Hughes (D-Ashland); and Republican Whip Clyde Middleton (R-Covington).

The Senate leadership makes up the Committee on Committees which in turn names senators to the 15 legislative committees. The committees study each bill which is introduced and make recommendations on whether it should be approved by the entire legislature.

Ken Gibson (D-Madisonville) was named chairman and Doug Moseley (R-Columbia) was named vice-chairman of the Agriculture and Natural Resources Committee.

Members are John "Eck" Rose (D-Winchester), Joe Wright (D-Harned), John D. Hays (D-Pikeville), Ed Ford (D-Cynthiana), John Berry (D-New Castle) and Pat McCuiston (D-Pembroke).

The Appropriations and Revenue Committee (A & R) which is the Senate's budget review panel, will be chaired by Mike Moloney (D-Lexington). Walter Baker (R-Glasgow) was named vice-chairman.

Members of A & R include Lowell Hughes (D-Ashland), Charles Berger (D-Harlan), Benny Ray Bailey (D-Hindman), John D. Hays (D-Pikeville), John Berry (D-New Castle), Robert Martin (D-Richmond) and Gene Huff (R-London).

Bill Quinlan (D-Louisville) is chairman and Ed Ford (D-Cynthiana) is vice-chairman of the Committee on Banking and Insurance.

Members of the committee are Frank Miller (D-Bowling Green), Pat McCuiston (D-Pembroke).

The Committee on Business Organizations and Professions will be chaired by Danny Yocum (D-Louisville), and Frank Miller (D-Bowling Green) was vice-chairman.

Members of the committee are Bill McGee (D-Louisville), William Sullivan (D-Henderson), Nelson R. Allen (D-Bellefonte), John Rogers (R-Somerset) and Jon Ackerson (R-Louisville).

Chairing the Education Committee is Nelson Allen (D-Bellefonte) and Robert Martin (D-Richmond) was named vice-chairman.

Members of the Education Committee are David Karem (D-Louisville), Ed O'Daniel (D-Springfield), Joe Wright (D-Harned), Ed Ford (D-Cynthiana), Ken Gibson (D-Madisonville), Jon Ackerson (R-Louisville) and Clyde Middleton (R-Covington).

SHERIFF'S SALE

Lawton Allen vs. ...Plf.
Weldon Luginbyhl vs. ...Def.
Three-M Business Products Sales, Inc. Intervening Plf.

By virtue of an execution issued by the clerk of the Floyd Circuit Court on Dec. 13, 1979, I, or one of my deputies, will offer for sale at public auction to the highest bidder at the Floyd County Courthouse, Prestonsburg, Ky., on Jan. 17, 1980 at 9 a.m. (EDT), the following described property:

Black metal desk, four Olivetti calculators, two Victor calculators, one Burroughs calculator, one paper cutter, one 3M binder, various two and three-hole punches, staplers, pencil sharpeners, blackboard, bulletin board, etc., two wooden desks, rough finish, one large wooden desk, two metal desks with typewriter side, one small desk, leather inlay and bookshelf, large top wooden table, two wooden tables with pencil drawers, wooden credenza, small side table with glass top and shelf, one IBM typewriter (green), eight steelcase filing cabinets, three filing cabinets (light green), one Remington Rand fireproof cabinet, one Lyon storage cabinet, one Tennisco storage cabinet, one green couch, one green steel desk, one light green metal desk (small), one light green work table, one Victor adding machine, one gray desk light, one brown desk file, one green desk chair, one brown side chair, one sectional couch, two end tables, one small stack file, one large stack file, one green steel desk, one 3M copier, one desk chair, one gray cabinet (small), gray typewriter, table, one Friden calculator, one Victor adding machine, one Remington electric typewriter, two black storage tables (mixed), one black storage file, one large gray storage cabinet, six filing cabinets, one gas refrigerator, Servel.

(There is an existing lease on some of the above items.)
Said sale is to satisfy a judgement of \$131,563.26, bearing 6 per cent interest from June 23, 1977 until paid, plus the costs of this action.

Terms of sale, Cash or certified check.
Given under my hand, this the 31st day of December, 1979.
DOUG LEWIS, SHERIFF
Floyd County, Ky.



A WEATHERED BARN and a frosty ridge can be seen through the weeds and thistles of this fenced bottom which lies adjacent to the drive-in theater here and near the Highlands Plaza shopping complex. Though surrounded by the trappings of prosperity which have come about over the past few years to this county seat town, the above scene yet calls back images of an older Prestonsburg when many residents maintained lots and barns for livestock within the city.

Pharmacy Footnotes



by Harold Cooley

State and local communities have enacted their own laws to supplement and compliment Federal legislation designed to protect the consumer. For example, the Pure Foods Act of California adds provisions to the Health and Safety Code for control of food, drugs and cosmetics and gives additional powers to the state department of public health. Many county and city health departments, local public health units and other official agencies across the country at the local level are actively involved in trying to protect the consumer and look after his health every day.

At COOLEY APOTHECARY, No. 2 Town Center Bldg., Prestonsburg, 886-8106, good health care is our first concern. We dispense only the very best quality ingredients available, for the money. We also welcome you to ask about our pricing procedure. It is to both of our advantage to have a full understanding about the price of our drugs. At COOLEY APOTHECARY you can be sure your consumer rights are being protected. Open 9-5:30 PM M.-F.; 9-5 PM Sat.

HELPFUL HINT:

Use stick shellac to repair minor defects in veneered surfaces.

"EASY TO SHOP—EASY TO SAVE"

SMART

and

JANUARY FASHION CLEARANCE SALES

**Highway 80 South,
Martin, Ky.**

**STORE HOURS: Mon. thru Sat., 9:00
Til' 9:00; Open Sundays, 12:00 Til' 6:00**

**SALE STARTS JAN. 10
PRICES GOOD THRU JAN. 13**

**Mens & Boys
WINTERWEAR
FASHION SALES**

**25% OFF
REG.
PRICE!**

MENS SWEATER VESTS

MENS ALASKAN FLANNEL SHIRTS

MENS CORDUROY SHIRTS

BOYS LONG SLEEVE SHIRTS

BOYS LONG SLEEVE POLOS

MENS & BOYS SWEATERS

MENS & BOYS WINTER COATS

MENS & BOYS CORDUROY JEANS

MENS & BOYS SNOWMOBILE SUITS

MENS WRANGLER® FLANNEL SHIRTS

MENS LONG SLEEVE SHIRT & SWEATER SETS

MENS & BOYS NYLON/CORDUROY/DENIM VESTS

SPECIAL SPECIAL SPECIAL SPECIAL

BLANKET & BEDSPREAD SAVINGS!

OUR COMPLETE INVENTORY OF BLANKETS AND BEDSPREADS REDUCED!

**25% OFF
REG. PRICE!**

**ENTIRE STOCK
Ladies & Girls
COATS & JACKETS**

25% OFF REG. PRICE!

FASHION SALES save!

**FASHION SALES
SPORTS WEAR**

**ENTIRE STOCK
Ladies & Girls
SWEATERS**

25% OFF REG. PRICE!

FASHION SALES save!

special purchases!

Wrangler SPORTSWEAR FOR GALS

•VESTS!
•SLACKS!
•SHIRTS!
•KNIT TOPS!
•FLANNELS!
•CORDUROY!

SAVE 45% ONLY AT SMART!

- Our Reg. \$12.99 — Now \$6.99
- Our Reg. \$14.99 — Now \$7.99
- Our Reg. \$16.99 — Now \$8.99
- Our Reg. \$18.99 — Now \$9.99
- Our Reg. \$19.99 — Now \$10.99
- Our Reg. \$29.99 — Now \$15.99

ALL YOUR FAVORITE CASUAL SPORTSWEAR... HUNDREDS TO CHOOSE FROM!

1-2-31

Drive with Care . . .

Driving is a complex activity which involves seeing, recognizing, and making judgments about the world outside the vehicle as well as reacting properly and appropriately in the operation of the vehicle. Any one of these jobs alone might be done adequately when a person has had several drinks, but even a small amount of alcohol can impair a person's ability to cope with the combination. You don't have to be legally drunk to be dangerous on the highways to yourself and others, reminds the Kentucky Alcoholism Council.

Health Notes

Is your microwave oven safe?
That's what a microwave oven inspection program, to be conducted by the Floyd County Health Department, hopes to help area residents find out. Although thousands of people use microwave ovens some may worry or have questions regarding their safety or the safety of cooking with microwave ovens. Because of this concern, the health department has initiated a microwave testing program.

The federal government has established stringent standards regarding the design and emission levels for microwave ovens. There is little concern about excessive microwave leakage unless the door, hinges, latch, or seal on the oven is broken, and this type of damage usually occurs during shipment or abnormal use.

With the use of a special instrument and through the training of local environmental personnel, the health department is qualified to make these inspections, which are without charge. Those who would like to have ovens inspected should call the health department at 886-2788 or write the health department. Persons who write must be sure to include their name, address, complete directions to their home, and hours to be contacted.

Observes 86th Birthday



Mrs. Alice Cornette, of Dixie Heights, Goble Roberts, observed her 86th birthday November 11 at her home. Enjoying the day with her were her daughters, Mrs. Northe Mae Morrison, of Hitchens, Ky. Gertrude Wallen, of Town Branch, and Mrs. Opal Horn, and many of her grandchildren, Mrs. Bonnie Shepherd, John D. Horn, Bill Tom Horn, and Audrey Horn and many of her 20 great-grandchildren.

Pavarotti Performs Live on KET Jan. 14

Luciano Pavarotti, the opera world's resigning lyric tenor, will perform a live concert with the New York Philharmonic when KET presents "Live From Lincoln Center" Monday, January 14 at 8:30 p.m. The orchestra's music director, Zubin Mehta, will conduct the concert, which features a number of operatic arias.

Pavarotti, a former school teacher who went on to become a world-renowned opera star, will be making his third appearance on "Live From Lincoln Center" on January 14. His first appearance, which won a coveted Emmy Award, took place on February 12, 1978, when he became the first opera singer to do a solo recital from the Metropolitan Opera House in New York City.

His most recent appearance on the series was on January 22, 1979, when he and Dame Joan Sutherland collaborated for the first time in a joint recital.

The New York Philharmonic is the oldest symphonic orchestra in the United States. Zubin Mehta, the Bombay-born conductor, has been music director since September, 1978, when he came to New York following tenures as music director of the Los Angeles and Montreal Philharmonic orchestras. Mehta is also the Music Director for the Israeli Philharmonic. "Live From Lincoln Center" is a presentation of "Great Performances."

"Dixie," written by Daniel D. Emmett, was composed in the North for a minstrel show.

Dr. Mary Fox Renamed Advisory Group Leader

Dr. Mary P. Fox, of Pikeville, was reelected chairman of the Head Start Health Services Advisory Committee. Big Sandy Area CAP, at the December meeting of the committee which was held at the Johnson county courthouse, Paintsville. Dr. Orville Clark, Jr., also of Pikeville, was elected vice-chairman.

The recent Head Start evaluation was studied, work plans were made and suggestions for program improvement were head. Another committee meeting is planned, later in the school year. Attending the meeting and enjoying a pot-luck dinner were:

Joe R. Cantrill, BSCAA Cordinator Handicap Service; Clifford Austin, Head Start director; Verson C. Moore, WKU social worker; Fred Hays, Paintsville; Bonnie Hays, secretary; Dr. Mary P. Fox, health officer, Pike county; Cwyndolin Adkins, Model City; Delphia Lockhart, director, Head Start, Model City; Debbie Wallen, speech aide; Margaret May, speech aide; Bill W. May, director of Man-power; Dr. O. M. Clark, Jr., optometrist, Pikeville; Kay Halbert, Floyd county director; James Grayson, Martin county director; Diana Bowen, Martin county; Virginia Pack, Martin county social service; Gail Smith, Martin, Marigrace Cole, Magoffin county teacher aide; Dr. J. Roger Castle, DMD; Ermal Hall, Magoffin county; Margaret McReynolds, Big Sandy nurse.

New Subscription Rates Per Year

In Floyd County, \$6.75
Elsewhere in Kentucky, \$8.
Outside Kentucky, \$10.

Please note expiration date opposite your name on wrapper or on your copy of The Times. Because of increased mailing costs, notices of subscription expiration are no longer mailed to subscribers.

ACCOUNTANT

Opportunity to be involved in the financial operation of a major company in the energy field. Qualified candidates should have a degree with a major in accounting.

Send resume to:

Island Creek Coal Company
ATTN: Employment Manager
P. O. Box 1257
Paintsville, Kentucky 41240



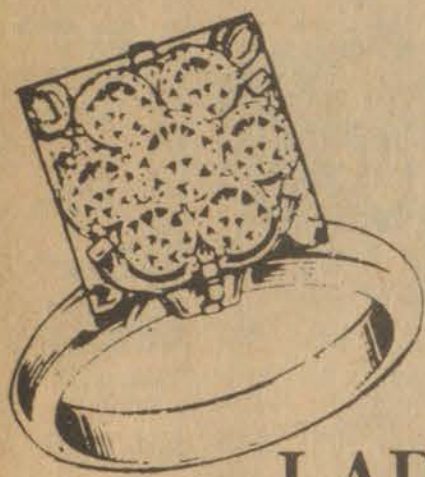
(PRINCIPALS ONLY)
EQUAL OPPORTUNITY EMPLOYER

REWARD

\$1,000

For information leading to arrest and conviction of person or persons shooting out security light, destroying property of Rock Fork Free Will Baptist Church in October and November, 1979.

Call: 358-4189
Garrett, Ky.



\$48

LADIES' SEVEN DIAMOND CLUSTER

C. & H. RAUCH JEWELERS

STORE HOURS: Gardenside - South Park - Woodhill, Open 10-9, Mon. thru Sat.
Frankfort Open Mon. thru Sat., 10-6
Pikeville - Richmond - Hazard - Somerset, Open Mon. thru Sat., 10-9

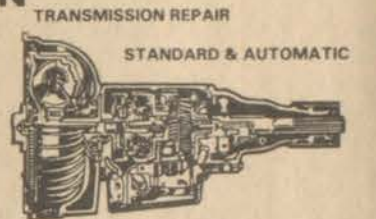
GENE'S AUTO & TRUCK SERVICE

GENE CLARY

AUTOMATIC TRANSMISSION REPAIR



4 X 4 SPECIALISTS ALL MODELS



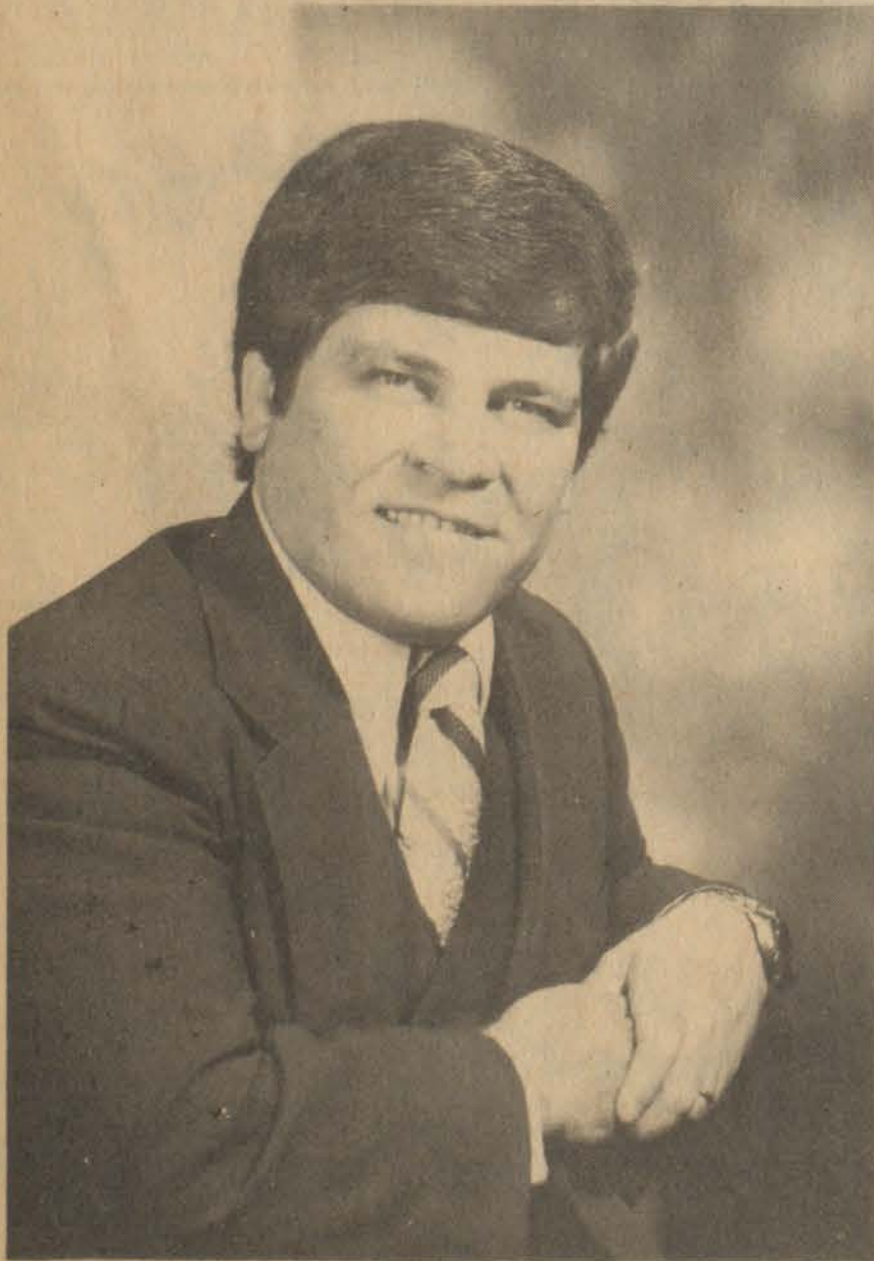
- * MOTOR TUNE-UPS
- * CARBURETOR OVERHAUL
- * ELECTRIC SERVICE
- * VALVE JOBS
- * MOTOR OVERHAUL
- * TRANSMISSION SERVICE
- * DIFFERENTIALS
- * COMPLETE BRAKE SERVICE
- * STATE INSPECTION STA.

ROAD & WRECKER SERVICE

886-9080

404 S. LAKE DRIVE PRESTONSBURG

TO THE CITIZENS OF FLOYD COUNTY



Every time the State Legislature meets, legislation is considered which determines the roads you drive on, the taxes you pay, the type of schools your children attend, higher educational opportunities and almost every aspect of your life. Your State Senator and State Representative are your voice in these matters and you should take every opportunity to inform your elected representatives of your views on the issues that come before the General Assembly.

As your State Senator, I solicit and welcome your comments.

My family and I are moving to Frankfort for the upcoming session of the General Assembly. We will remain in Frankfort until the session is completed, although I hope to return home each week-end to try and stay in touch with the people so that I can more accurately represent their views in the Senate.

Our home telephone number in Frankfort is:(502) 695-5772

You should be able to reach me during the day by calling:(800) 372-7164

Our home telephone number in Hindman is:(606) 785-5327

My office telephone number in Hindman is:(606) 785-3164

I hope each of you will feel free to call me on any issue which you are interested in and give me your views.

I thank each of you for the confidence you have placed in me and hope that, during the upcoming session, I can prove worthy of it.

BENNY RAY BAILEY
DEMOCRATIC STATE SENATOR
FLOYD, KNOTT, PERRY AND MARTIN COUNTIES

DEL MONTE CUT GREEN BEANS
ALSO FRENCH STYLE
3 \$1
16 OZ. CANS

COUPON
CORONET
BATH TISSUE
4 69¢
ROLL PKG.
LIMIT 1 WITH THIS COUPON & \$10 ORDER.
VALID AT PIC-PAC THRU JAN. 12, 1980.

MORTON ASSORTED FROZEN DINNERS
4 49¢
11 OZ. PKG.

Hyde Park
2% Lowfat MILK
\$1 69
Gal. Plastic Jug

PIC-PAC

PRICES GOOD THRU JAN. 12, 1980

TRIM YOUR BUDGET HERE!

YOU'LL LOVE PIC-PAC MEATS

DEL MONTE SWEET PEAS
3 \$1
17 OZ. CANS

DEL MONTE WHOLE KERNEL OR CREAM STYLE GOLDEN CORN
3 \$1
17 OZ. CANS

DEL MONTE TOMATO JUICE
46 OZ. CAN
59¢

ARMOUR STAR TRETT (10¢ OFF LABEL) LUNCHEON MEAT
12 OZ. CAN
\$1 09

CAMPBELL'S PORK & BEANS
3 16 OZ. CANS
\$1

ARMOUR (7¢ OFF LABEL) CHILI WITH BEANS
15 OZ. CAN
69¢

STOKELY'S FINEST APPLE SAUCE
2 17 OZ. CANS
79¢

HYDE PARK MACARONI & CHEESE
3 7 1/2 OZ. PKGS.
89¢

HYDE PARK ELBOW MACARONI OR THIN SPAGHETTI
2 LB. PKG.
89¢

HYDE PARK WHOLE SWEET PICKLES
32 OZ. JAR
\$1 39

NABISCO DOUBLE STUF OR REGULAR OREO COOKIES
15 OZ. PKG.
99¢

DIAL (5¢ OFF LABEL) BATH SOAP
2 5 OZ. BARS
79¢

COFFEE CREAMER COFFEE MATE
22 OZ. JAR
\$1 99

HYDE PARK 1LB. (QUARTERS) GOLDEN MARGARINE
1 LB. PKG.
39¢

HYDE PARK CINNAMON ROLLS
9 1/2 OZ. CAN
59¢

BIRD'S EYE COOL WHIP
9 OZ. BOWL
59¢

HYDE PARK CRINKLE CUT FRENCH FRIES
32 OZ. PKG.
79¢

PET-RITZ (ASST. FLAVORS) FROZEN COBBLERS
26 OZ. PKG.
\$1 59



U.S.D.A. CHOICE CHUCK ROAST
LB.
\$1 09

Swift WIENERS
12-Oz. Pkg.
89¢

U.S.D.A. CHOICE SHOULDER ROAST
LB.
\$1 29

U.S.D.A. CHOICE ENGLISH ROAST
LB.
\$1 29

U.S.D.A. CHOICE RIB STEAK
LB.
\$2 39

TASTE OF SEA Batter-Dipped FISH PORTIONS
LB.
\$1 59

WENNING'S SLICED SMOKED PICNICS
LB.
83¢

FRESH, LEAN GROUND BEEF
3 LBS. OR MORE
LB.
\$1 39

WENNING'S WHOLE SMOKED PICNICS
LB.
79¢

SWIFT SLICED BACON
12 OZ. PKG.
89¢

FROZEN TURKEY DRUMSTICKS
LB.
49¢

KINGSFORD ASSORTED MEAT PATTIES
14 OZ. PKG.
\$1 49

LAND OF FROST ASSORTED CHIPPED MEATS
3 OZ. PKG.
59¢

SWIFT CANNED HAM
5 LB. CAN
\$9 99

PICK-OF-THE-PATCH PRODUCE



FLORIDA JUICY WHITE OR PINK GRAPE-FRUIT
5 LB. BAG
\$1 09

ALWAYS A FAVORITE...RIPE

GOLDEN BANANAS
4 LBS.
\$1

6 OZ. RED RADISHES, BUNCH GR. ONIONS, GREEN PEPPERS OR CUCUMBERS
4/\$1

GARDEN FRESH CRISP CELERY
STALK
49¢

GARDEN FRESH RED TOMATOES
LB.
49¢

TEXAS GREEN CRISP CABBAGE
LB.
19¢

MILD FLAVORED YELLOW ONIONS
3 LB. BAG
39¢

TIDE (50¢ OFF LABEL) LAUNDRY DETERGENT
171 OZ. BOX
\$4 99

Hyde Park
BUTTERMILK
79¢
Half Gal. Carton

Hyde Park
FRESH BREAD
4 16-Oz. Loaves
\$1

Meadow Gold
ICE CREAM
\$1 29
Half Gal. Carton

HYDE PARK
Church or Civic Organization
SAVE THE LABELS ON HYDE PARK FOOD PRODUCTS! Hyde Park Food Product Labels are worth one-half cent each to your church or civic organization. Start saving labels today! After accumulation of labels, your church or civic organization should mail them to: Malone & Hyde, Inc., 1991 Corporate Ave., Memphis, Tenn. 38132.
Compare Quality, Compare Price, You'll Buy Hyde Park

PIC-PAC
Prestonsburg and Martin

El Hasa Outer Guard



E. L. Bierman, of Prestonsburg, has been appointed Outer Guard of El Hasa Temple, A.A.O.N.M.S., Ashland, by Thomas N. Cox, Potentate of El Hasa Temple.

Mr. Bierman is a member of Peewee Valley Lodge No. 829, Prestonsburg Chapter No. 182, R.A.M., Ray G. Tipton Council No. 98, Knights Templar, Paintsville, El Hasa Temple, Ashland, Lexington Consistory, Valley of Lexington, Orient of Kentucky, Van Lear Chapter, O.E.S. of Kentucky, and White Shrine of Jerusalem No. 21, Paintsville.

He is now secretary-treasurer of the Jenny Wiley Shrine Club here; president and secretary of Sheriff's Patrol Unit, Big Sandy Area, Paintsville; third vice-president of Uniform Units, El Hasa Temple, Ashland.

Mr. Bierman and his wife, Maxine Selvage Bierman, have five children and nine grandchildren.

VISIT MR. JARRELL

Among the relatives and friends who have visited with Mrs. Fannie S. Jarrell during and since the Christmas holidays have been Mrs. Rebecca Brown and Mr. and Mrs. Danny Brown, of Oak Hill, Ohio, Mr. and Mrs. Curtis Jarrell and daughter, of the Bull Creek road, Mr. and Mrs. James Baisden, of Prestonsburg, Mrs. Myrtle Baisden, of Prestonsburg, and Miss Bessie Halbert and Miss Halbert's niece and nephew, of Martin. Mr. and Mrs. Eli Schoolcraft were Mrs. Jarrell's guests on Friday night.

COMMITTEE TO MEET

Members of the Garden committee of the Prestonsburg Woman's Club will meet at the home of the chairman, Miss Ethel Burke, this Wednesday evening at 6 o'clock for the purpose of planning for the planting of trees, honoring presidents of the club from 1919-1980.

Local Accounting Firms in Merger

Announcement was made this week of the merger of two local certified public accounting firms, Bottoms and Wright and James B. Burchett. The new firm, Burchett, Bottoms, and Wright, Certified Public Accountants, will have offices on the Auxier road, near here.

Members of the firm are William E. Bottoms, a graduate of Bryan Station High School, Lexington, and Pikeville College. Mr. Bottoms is a veteran of the U. S. Navy, and is licensed to practice by the Kentucky State Board of Accountancy.

Mr. Burchett, native of Prestonsburg, is a graduate of Millersburg Military Institute and of Bowling Green College of Commerce. He is licensed by both the Florida and Kentucky Boards of Accountancy. Mr. Burchett is the son of Bev Burchett, of Water Gap, and the late Joan Burchett.

Rawland M. Wright is a graduate of Wheelwright High School and Eastern Kentucky University. A veteran of Army service, he is licensed by both the Ohio and Kentucky Boards of Accountancy.

PUBLIC NOTICE

Joe Paul Hicks, of Langley, Ky., has filed application for license to operate a place of entertainment, Joe's Pool Room, at Langley.

C. "Ollie" Robinson, Clerk
Floyd County Fiscal Court
1-9-80.

AMWAY PRODUCTS COME TO YOU
Satisfaction guaranteed or your money back.
Call 285-3916 12-5-41.

INCOME TAX SERVICE
Dick Spurlock
All State Returns Also Prepared.
886-6345, office
886-3075, home
Monday thru Saturday
Sunday, by appointment
Layne Building
Over Ben Franklin 5&10 1-9-80.

Authorized TROY-BILT® Dealer
CASEY'S REPAIR SHOP
Ed Flynn, Mgr. 886-9572
• Chain Saws • Lawn Mowers • Earth Stoves • Suburban • Better 'n Ben's • Majestic Fireplaces and Inserts
1-9-80.

VELOCITY MARKET

3 LOCATIONS!
• PIKEVILLE • ZEBULON
• BETSY LAYNE

**OPEN 7 DAYS A WEEK
8 A.M. TO 11 P.M.**

• PRICES EFFECTIVE WED., JAN. 9, THRU SUN., JAN. 13.
• WE RESERVE THE RIGHT TO LIMIT QUANTITIES.
• WE ARE NOT RESPONSIBLE FOR PRINTER'S ERRORS.

Armour
BACON
\$2.19
2-Lb. Pkg.

BETSY LAYNE STORE ONLY

CENTER CUT
PORK CHOPS
\$1.29 LB.

HOLLYWOOD STYLE
SPARE RIBS Lb. 99¢

RIB CHOPS Lb. 99¢

VALLEYDALE CHUNK **BOLOGNA** Lb. 89¢

U.S. CHOICE **SIRLOIN STEAK** Lb. \$2.29

LOIN END **PORK ROAST** Lb. 99¢

FRESH **CHICKEN LEGS** Lb. 79¢

SPECIALS!

PARKAY **MARGARINE** 2-Cup Pkg. 69¢

MARTHA WHITE **SELF-RISING FLOUR** 5-Lb. Bag 89¢

SPECIAL!

CHARMIN **BATHROOM TISSUE**

4-Roll Pkg. 89¢

LEAN **GROUND BEEF** Lb. \$1.59

DEL MONTE **WHOLE KERNEL GOLDEN CORN** 303 Cans 3/\$1

Tropicana **ORANGE JUICE** 1/2 Gal. \$1.19

TIDE DETERGENT 171-Oz. Box \$4.59

AMERICA'S FAVORITE
Tide
FOR CLEANING YOU CAN COUNT ON
Tide's In... Dirt's Out

HUNT'S 46-OZ. CAN **TOMATO JUICE** 59¢

HUNT'S 303 CANS **FRUIT COCKTAIL** 2/99¢

SHOWBOAT 14-OZ. **PORK & BEANS** 4/\$1

15-OZ. PKG. **OREO COOKIES** \$1.09

ORE-IDA **FRENCH FRIES** 2-Lb. Bag 79¢

ARGO 303 CANS **PEAS** 4/\$1

MAXWELL HOUSE 10-Oz. Jar **INSTANT COFFEE** \$4.69

WESSON **OIL** 38-Oz. Btl. \$1.49

HUNT'S 303 CANS **PEACHES** 2/89¢

BATH SIZE **DIAL SOAP** 3/\$1

1-LB. BAG **CARROTS** 19¢

APPLES 3-Lb. Bag 69¢

VELOCITY MARKET

CHECK OUR STORE MARQUEE FOR DAILY FOOD SPECIALS!

Pikeville - Zebulon - Betsy Layne • Open 7 Days A Week • 8 A.M. To 11 P.M.

QUALITY STAMPS • QUALITY STAMPS • QUALITY STAMPS • QUALITY STAMPS • QUALITY STAMPS • QUALITY STAMPS

SHOP WITH EASE AT DAN-DEE'S!

WE ACCEPT USDA FOOD STAMPS



WE GIVE QUALITY STAMPS

Prices Effective Wed., Jan. 9 Thru Sun., Jan. 13.

GROUND CHUCK \$1.59 LB.



This Week On Dan-Dee's Wall of Values:

ARMOUR'S WIENERS 12-Oz. Pkg. 89¢

PRODUCE

GROCERIES

HAWAIIAN RED PUNCH 46-Oz. Can 65¢

BOLT PAPER TOWELS Each 59¢

CHEER LAUNDRY DETERGENT 84-Oz. Box \$2.49

FILBERT'S GOLDEN MARGARINE QUARTERS 1-Lb. 59¢

BANQUET FRIED CHICKEN 32-Oz. Pkg. \$2.49

ARGO SWEET PEAS 17-Oz. Cans 3/89¢

DOWNY 96-OZ. BTL. FABRIC SOFTENER \$2.99

SWISS MISS REG. OR WITH MARSHMALLOWS INSTANT COCOA 12-Oz. Pkg. \$1.39

HYDE PARK MACARONI & CHEESE DINNERS 7 1/4-Oz. Size 3/89¢

YELLOW ONIONS 3-Lb. Bag 38¢

CABBAGE 15¢ Lb.

TOMATOES 58¢ Lb.

CALIFORNIA NAVEL ORANGES 5/\$1

TRAIL BLAZER DOG FOOD 25-Lb. Bag \$3.19

MINUTE MAID 16-OZ. ORANGE JUICE \$1.19

DEL MONTE HALVES OR SLICED PEACHES 29-Oz. Can 69¢

ENGLISH MOUNTAIN GREEN BEANS 29-Oz. Cans 2/99¢

COUPONS

VALUABLE COUPON 50 FREE QUALITY STAMPS With Purchase of ANY TWO (2) NON-FOOD ITEMS. Valid at Dan-Dee Market Thru Tues., Jan. 15.

VALUABLE COUPON 50 FREE QUALITY STAMPS With Purchase of ANY TWO (2) FROZEN FOOD ITEMS. Valid at Dan-Dee Market Thru Tues., Jan. 15.

VALUABLE COUPON 50 FREE QUALITY STAMPS With Purchase of A 10-LB. BAG OF IDAHO POTATOES. Valid at Dan-Dee Market Thru Tues., Jan. 15.

VALUABLE COUPON 50 FREE QUALITY STAMPS With Purchase of A FAMILY PACK OF CANDY. Valid at Dan-Dee Market Thru Tues., Jan. 15.

MEAT

HYDE PARK BACON 12-Oz. Pkg. 89¢

ROUND STEAK \$1.89 Lb.

SIRLOIN TIP ROAST \$1.99 Lb.

ARMOUR PORK SHOULDER PICNIC 3-Lb. Can \$5.79

SNOWHILL BAKING HENS 69¢ Lb.

KRAFT 8-OZ. PHILADELPHIA CREAM CHEESE 69¢

SHOWBOAT PORK & BEANS 31-Oz. Cans 2/99¢

CAMPBELL'S CHICKEN NOODLE SOUP 10 1/2-Oz. Cans 4/\$1

HYDE PARK 15-OZ. CHILI with BEANS 2/\$1

HYDE PARK CHILI HOT BEANS 29-Oz. Cans 2/99¢

MEADOW GOLD 1/2 GAL. ICE CREAM \$1.39

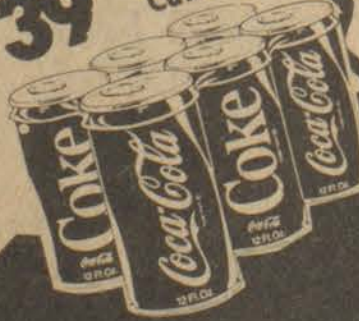
GOLD MEDAL SELF-RISING FLOUR 5-Lb. Bag 89¢

WELCH'S 32-OZ. JAR GRAPE JELLY \$1.09

OREO COOKIES Reg. or Double Stuff 15-Oz. Size 99¢

FEED FOR LIVESTOCK

COKE \$1.39 6-Pack Cans



DAN-DEE SUPERMARKET

HOURS: 8 A.M.-11 P.M. Seven Days A Week

PHONE 478-9696 STANVILLE

AMPLE PARKING

QUALITY STAMPS • QUALITY STAMPS • QUALITY STAMPS • QUALITY STAMPS • QUALITY STAMPS • QUALITY STAMPS

Named To Who's Who



Andre Gerard Spencer, senior at Johnson Central High School, has been included in the 1979 edition of Who's Who in American High School Students. Spencer participated in Johnson county's program for advanced eighth graders at Johnson Central High School, and he has been a member of College Preparatory Program throughout high school. He has been a member of the Marching Eagles, the concert band, and the jazz band, in which he is frequently featured on the alto and soprano saxophones. He has been a member of the speech and drama teams and has won several honors, including a gold medal in broadcasting at the state speech tournament in Lexington last April. In 1978, he was the school winner in the Read-A-Thon contest to help the mentally retarded, and in 1979, he was a first place state winner in one of the categories. In addition to activities, he is the president of the Research Historians' Club. Spencer is a parttime employee at WSIP radio station in Paintsville, and he hopes to pursue radio and television communications as a college major. The son of Mr. and Mrs. Alex Spencer, Jr., of Johnson county, he is the grandson of Mr. and Mrs. L. B. Price, of Waverly, Ohio. All are former residents of Floyd county.

ALLEN COMMUNITY NEWS

Christmas dinner guests of Mr. and Mrs. Terry Kinzer and daughter, Suzanne, of Pikeville, were Mr. and Mrs. Joe Clark, Donald Martin, Mr. and Mrs. Jerome Kinzer and children, Jeff, Jamie, and Renee, Mr. and Mrs. Kermit Joseph, Mr. and Mrs. Willard Kinzer, Mrs. Rosie Kinzer, Mr. and Mrs. Galloway Lafferty, Mr. and Mrs. Bobby Osborne and children, Neil, Dwayne, and Leslie, and Tommy Allen, all of Allen, Miss Donna Sue Clark, Owingsville, Mr. and Mrs. Ritchie Collins and daughter, Jessica, of Stanville, and Mr. and Mrs. Jerry Kinzer and children, Jerri Lynn and Brandon, of Prestonsburg.

Mr. and Mrs. Jack Friar spent Christmas with his parents, Mr. and Mrs. Pascal Friar, of Rosehill, Virginia.

Deanna Campbell and son, Mathew, of Lexington, are here visiting her parents, Mr. and Mrs. Lewis Campbell, and their grandson, David.

Mrs. Edna Mae Allen Callison was the Christmas guest of her daughter and son-in-law, Neil and Delores Bradley, of Eastern.

Christmas visitors here to see Mrs. Dora Chapman Setser were David and Nancy Setser and children, Jeffrey Browning and Amy Lee Setser, of Catlettsburg. This past Sunday, Mrs. Irene Spence and Mrs. Bessie Burke, of Inez, visited Mrs. Setser. They are all children of the late Granville Setser. Other Sunday visitors were Mrs. Elizabeth Wright and children, Latessa and Timothy Ray, of Blue River.

Mrs. Eugene Allen spent Christmas with her daughter-in-law, Mrs. Randell Allen, and other family members at Martin.

Mr. and Mrs. George Laven have returned home after spending the Christmas holiday with their daughter and son-in-law, Capt. and Mrs. Steve Hampton, and grandchildren, Stephen and Stephanie, of Orlando, Florida. Mrs. Bess Hampton, formerly of Martin and now of Columbus, Ohio, was there to visit also. Mrs. Laven, who has been confined to her home with a knee injury, is improving.

Mr. and Mrs. Joe Hinchman and children, Cheri, Steve, Paula, and Kevin, visited with Mrs. Hinchman's parents, Mr. and Mrs. Ralph Wilhem, in Bonita Springs, Florida, during Christmas holiday.

Mrs. Terry Kinzer was honored with a birthday party December 29 in Lexington at the home of Mr. and Mrs. Willard Kinzer. Guests enjoying the occasion were Mrs. Kinzer, Mr. and Mrs. Willard Kinzer, Mr. and Mrs. Joe A. Clark, Mr. and Mrs. Ritchie Collins and daughter, Jessica, and Mr. and Mrs. Jerry Kinzer and children, Jerri Lynn and Brandon.

Sympathy is extended to the family of Mrs. Lela Stumbo, of Betsy Layne, who passed away last week. Mrs. Charles May, her daughter, and a number of relatives live here in Allen.

Sympathy is extended to the family of Mrs. Anna Hale, of West Prestonsburg.

New Mayo Building Named for Ramey

A brief ceremony was held Dec. 19 at Mayo State Vocational-Technical School to name the newest building on its campus for George L. Ramey, Sr.

Bronelle Skaggs, regional director of Vocational Education and Jesse Conley, principal at Mayo, presented Mr. Ramey a certificate for outstanding achievement and advised him that a permanent metal plaque would be prepared and mounted in the building.

Mr. Ramey helped secure funding for the modernization of the Mayo campus and was instrumental in developing the satellite school concept which has been implemented statewide and has been adopted by other states. He served on many professional and civic committees while he was director at Mayo from 1952 to 1975. He was appointed to serve on the National Advisory Committee for Vocational Education by President Johnson and was appointed to a second term on the committee by President Nixon.

Celebrates 2nd Birthday



James E. Robinson, Jr., celebrated his second birthday Saturday, December 15, with a birthday party at the home of his parents, Mr. and Mrs. James E. Robinson, Sr., of Arkansas Creek, Martin. In addition to his parents, the following guests were present; Larry D. Robinson and son, Sean Keith, of Prestonsburg; Jesse E. Robinson, Martin; grandparents, Mr. and Mrs. Rupert Samons, of Martin, and Mr. and Mrs. Edward F. Robinson, of Maytown.

FLOYD COUNTY SANITATION PICK UP SCHEDULE

FOUR TRUCKS NOW IN OPERATION

- MONDAY—Auxier Road and all side roads from Western Sizzling Steak House on U.S. 23 to Dwale, Allen, May Village and all of Allen hill.
TUESDAY—Auxier down to Ford's Gap; from Banner bridge to Emma; Calf Creek, Cow Creek, Slick Rock, Woods Branch.
WEDNESDAY—Little Paint, East Point, Cliff; from Cow Creek down Old 23, Lake Road, Corn Fork.
THURSDAY—Abbott, Bull Creek, Town Branch, Water Gap Road.
FRIDAY—Mountain Parkway, State Road Fork, Spurlock Road, David Road and town of David.

PLEASE NOTE

- 1. Garbage must be placed by road for pickup.
2. If garbage pickup bill is not paid by 10th of each month, there will be no pickup.
3. New coupon books will be issued next week.

KENTUCKY TROPHY CENTER
R. R. 1
Box 422E, Prestonsburg
TROPHIES, RIBBONS AND PLAQUES FOR ALL OCCASIONS
Phone 886-3178
Day or Night
Owned and Operated by KENNY CONLEY

PUBLIC ANNOUNCEMENT
To all customers of Palmer's Gulf Service Station, Prestonsburg, Kentucky:
I have sold my service station as of January 1, 1980 and will be collecting all debts owed at my home or you may send by mail.
Thank you for your past patronage and I wish for you a very prosperous new year.
Palmer Patton
454 Riverside Drive
Prestonsburg, Kentucky 41653

Shoe Show SNOW SHOES
Highland Plaza Prestonsburg
Hours: Mon.-Sat., 10-9; Sun., 1-6
Ladies Rubber Waterproof Boot With Fleece Lining. Sizes 6-11. 19.95
Ladies 6-11 Grey Waterproof Overshoes. 3.99
Ladies 5-10 Black/Sueding Gray Trim. Fleece Lined. 12.95
Ladies Brick Wedge Boot. Sizes 5-10. 16.00
Ladies 5-10 Brown Sueding/Brown Fur Fleece Lined. 21.95
CHILD'S RED OR BLACK OVER-THE-SHOE BOOTS. Sizes 5-3. 3.99
Available in Mens Black Work Artic. 14.95
Mens 8-12 Boys 3-6 Waterproof Boots. 10.95, 11.95
INSULATED BOOTS
Steel Shank Olive. Mens 7-12. B. Boys 3-6 Childs 11-2. 9.95, 10.95
Mens Black Stretch Overshoe. Sizes S-M-L-XL. 5.99

STOCK UP YOUR PANTRY!
WESSON OIL \$1.49
Maxwell House INSTANT COFFEE \$4.59
CHARMIN BATHROOM TISSUE 95c
ARGO PEAS 4/\$1
SHOWBOAT PORK & BEANS 4/\$1
HUNT'S SLICED PEACHES 2/89c
HUNT'S TOMATO JUICE 69c
HUNT'S TOMATO CATSUP 99c
KOUNTY KIST WHOLE KERNEL CORN 4/\$1
MARTHA WHITE SELF-RISING FLOUR \$4.69
FISCHER'S LARD \$8.98
ARMOUR BOLOGNA CHUNK 99c
ARMOUR VIENNA SAUSAGE 2/79c
BREEZE 38-OZ. LAUNDRY DETERGENT \$1.59
YELLOW ONIONS 49c

WAYSIDE MARKET
Wiley Elliott, Owner Garrett
Open Seven Days A Week
8 a.m.-7 p.m., Weekdays; 10 a.m.-6 p.m., Sundays

TRIANGLE MARKET
Olin Elliott, Owner Martin
Open Seven Days A Week
Mon. thru Sat., 7 a.m.-8 p.m.; Sunday, 9 a.m.-8 p.m.

D.A.V.'s Meet with Lt. Gov. Collins



Pictured, from left, are: Mary Michael Steele, assistant to Lt. Gov.; Harley Sturgill, commander, D.A.V. Chapter 18; Lt. Gov. Martha Layne Collins; Rev. Lee Music, executive committeeman; Charles Grace, senior vice-commander, Chapt. 136 (Paintsville); James E. Roberts, legislation chairman, and seated, Roy C. Runyon, junior vice-commander, Chapt. 136.

A group of representatives of the Disabled American Veterans organization from Floyd and Johnson counties travelled to Frankfort recently for a legislative conference with Lieutenant Governor Martha Layne Collins and her assistant, Mary Michael Steele.

Among the bills discussed with Lt. Gov. Collins affecting disabled veterans and their families were the following:

House Bill No. 74, introduced by Reps. Hoover Dawahare and Forest Aggie which calls for added benefits to Vietnam veterans; Senate Bill No. 56, introduced by Tom Easterly for the purpose of separating the Veterans Affairs from the Department of Human Resources; Senate Bill No. 4, introduced by Senator Georgia M. Powers to provide a special license plate to ex-prisoners of war for \$1.00 per year.

The disabled vets' representatives also discussed with Collins support of a combined bill on military retirement pension which would not be taxed and a homestead exemption for disabled veterans. In addition, the committee expressed support of a bill introduced by Sen. Lowell T. Hughes which would provide free hunting and fishing licenses for veterans who have a 40 per cent or more service-connected disability.

(Toll-free numbers are available to receive public support of these and other related bills. They are 1-800-372-7194 and 1-800-372-7164.)

★ Extension Service News ★

by FRANCES H. PITTS
County Extension Agent
for Home Economics

LEARN HOW TO
EVALUATE BARGAINS

The season's clothing sales that offer cute buys for 50 cents and up may break down the discipline of the most careful wardrobe and budget planner. Avoid impulse buying and disappointing bargains by learning how to evaluate sales merchandise.

Finding a good clothing buy on sale for you or a family member involves the same kind of thinking, planning, comparing and judging used in determining a good buy any time.

If you judge the clothing primarily on dollar savings, you may be disappointed to realize that bargains weren't things you really wanted or needed. Arm yourself against impulse buying by knowing your wardrobe well.

Take a closet inventory and write down the garments that you have. Look at this list carefully and determine what you need. Do you have any skirts or pants, but no tops that really look good with them? If so, decide what you need to get more wear out of these garments.

When you shop sales, keep in mind the colors and styles you already own, and take or wear clothes you want to match or coordinate.

Look for classic garments at the end of the season. Be suspicious of faddish or high style items that will be out-dated next year.

Before making the final decision as to whether or not to buy the garment, you

need to ask yourself several questions. First of all, do you really need it? Ask yourself if you really like it or if it is only "so-so." Will you have to buy new accessories to complete the outfit?

Does the garment fit well? Trying on clothes before buying is important, especially if the store has a no return policy for sale items.

If the fit is not perfect, you may be able to alter it, but keep in mind that permanent press garments cannot be made larger because the creases cannot be removed.

What type of care is required? Examine workmanship, the fiber content and care labels before you buy. Is the garment shrink-resistant and colorfast. Are you willing to hand wash or dry clean the garment?

Also, consider whether or not you will be getting a bargain after the cost of cleaning, alterations and repairs. Will purchasing the garment on credit increase the sale price because of finance charges?

Decide on what kind of service you expect from the garment. For example, durability is important in buying jeans; appearance is a first consideration in a party dress; and care is a factor in buying a school dress.

Satisfactory answers to these questions will help you find real bargains and avoid needless waste of clothing dollars.

VISIT IN HUNTINGTON

Mrs. Margaret Ackerman and her mother, Mrs. Lona Simmons, spent a part of the holidays in Huntington, where they visited relatives.

NUNNERLY REALTY

FOR SALE

RANCH—3 bedrms., 2 full baths, nice bit.-in.kit. with range and dishwasher. Central heat/a.c., fully carpeted with drapes and wallpaper. City water and sewage. Carport. This nice brick ranch is less than two yrs. old and is in very good condition. Located Shepherd Subd., 3 miles west of Prestonsburg. Priced \$56,900.

RANCH—3 bedrms., 1 1/2 baths, nice kit., with l. rm. and fm. rm., fully carpeted. City water and sewage. Located Shepherd Subd. Price: \$48,000.

SPLIT-FOYER—This large home has 3 bedrms., 2 full baths, lg. fm. rm. with fireplace, central heat and a.c., fully carpeted. Garage. Nice wooded lot with privacy deck. Located in Hopson Subd. near Ford's Gap. Price: \$69,000.

ABBOTT—3 bedrm. ranch. Liv. rm., bit.-in.kit., utility rm., full bath. Fully carpeted. 2-car garage. Large 100' x 200' lot with garden area. Price: \$47,000.

TRAM—One-story frame home and approximately 3 acres of land. Price: \$29,000.

PRESTONSBURG—Beautiful 3-acre estate located within city limits. Consists of 2-story Colonial house with swimming pool and lighted tennis court. Call for details. Qualified buyers only. Make us an offer!

WE HAVE ADDITIONAL PROPERTIES FOR SALE IN AND AROUND PRESTONSBURG.

DIXON NUNNERLY, Broker
Call: 886-6464 or 886-2189

Times Want Ads Really Get Results!

WHOLESALE TO THE PUBLIC!

START THE NEW YEAR OFF RIGHT AT

KEN ISAACS PONTIAC • CADILLAC OLDSMOBILE & JEEP USED CAR LOT

<p>1979 FIREBIRD Gold, low miles, like new, loaded. Was \$6595 NOW \$6095</p>	<p>1975 CADILLAC COUPE DeVILLE Power steering, power brakes, air-conditioned, tilt-wheel, speed control, door locks, power windows, 40-60 power seats, leather interior, AM-FM tape. WAS \$2895 NOW \$1895</p>	<p>1977 EL DORADO COUPE Red and white, power moon roof, 50-50 seats, power windows, tilt wheel, speed control, AM-FM radio, power steering, power brakes, air-conditioned, white sidewall tires, low miles. WAS \$6395 NOW \$4995</p>	<p>1977 PONTIAC GRAND PRIX Silver, 25,000 miles. Local, one owner. Was \$4995 NOW \$4595</p>	<p>1979 CHEVROLET 1/2-TON PICKUP Only 4,000 miles. New, new, new! Was \$5895 NOW \$5095</p>
<p>1978 TRANS-AM SILVER 13,000 miles, must see. Like a new one. Was \$6395 NOW \$5495</p>	<p>1977 LINCOLN TOWN SEDAN Red moon dust, 19,000 miles. Local, one owner. Was \$6995 NOW \$6595</p>	<p>1974 CUTLASS SUPPREME 2-door, white, power steering, power brakes, air-conditioned, AM-FM radio, bucket seats, automatic transmission. Must see. WAS \$2495 NOW \$1395</p>	<p>1976 CADILLAC DeVILLE SEDAN Local, one owner, low miles, loaded. Was \$3895 NOW \$2595</p>	<p>1977 LINCOLN TOWN SEDAN 4-door, 25,000 miles, loaded with all the toys. Was \$6895 NOW \$5295</p>
<p>1979 CADILLAC COUPE DeVILLE Loaded with all Cadillac extras. Two-tone brown. Was \$9995 NOW \$9595</p>	<p>1977 MONTE CARLO 2-door, yellow and white, loaded with all the extras, must drive. Was \$3995 NOW \$2995</p>	<p>1976 FORD CUSTOM VAN 28,000 miles, one owner, sleeps eight if you're in love, power steering, power brakes, automatic transmission, air-conditioned, like new. WAS \$5995 NOW \$4895</p>	<p>1976 DATSUN B-210 Low miles, talk about gas mileage! Was \$3595 NOW \$2995</p>	<p>1974 CADILLAC COUPE DeVILLE Yellow and white, like new. Was \$3495 NOW \$2595</p>
				<p>1976 JEEP RENEGADE Low miles, like new. Was \$4995 NOW \$4595</p>

50 MORE IN STOCK — 10 USED 4-WHEEL DRIVES IN STOCK

SALE STARTS WEDNES., AT 8:30 A.M.—ENDS SAT., AT 6:00 P.M. • DEALERS WELCOME

KEN ISAACS PONTIAC-CADILLAC OLDSMOBILE-JEEP USED CAR LOT

430 SOUTH LAKE DRIVE, PRESTONSBURG • PHONE 886-9191

A World Experiment:

Predicting Weather Next Decade



By Joseph Harris

The largest scientific venture in history came to a close on November 30, 1979, as the Global Atmospheric Research Program (GARP) ended a year long, intensive watch of the earth's weather and environment.

The experiment was a milestone in politics as well as science. Over 14 nations pooled their resources to monitor nearly all the world's weather at the same time, and in unprecedented detail.

5,000 Scientists

The sheer size of the experiment was staggering. In addition to the usual monitoring facilities of the World Weather Watch, the experiment employed four polar orbiting satellites, five geostationary satellites, 50 vessels from 22 countries, 10 special research aircraft, 300 constant level balloons, masses of observational equipment and the time of 5,000 scientists and engineers.

Yet almost no one seems to have heard of it. In part, this was due to the very size and complexity of the effort. People, ideas and equipment were assembled quietly and haltingly for 20 years, as GARP slowly expanded its capacity to acquire and process weather information.

Next there was the problem of what to publicize. A spaceship whirling through the solar system may beam back close-ups of Jupiter and Saturn, but a weather ship is restricted to more mundane reports of wind patterns, barometric pressures and water temperatures.

Finally, the Global Weather Experiment isn't over yet. The past year has seen a massive gathering of observations and data. The years to come will be spent in analyzing and using that vast store of information.

Increasing the Accuracy

The primary goals of the World Weather Experiment are to find the limits of weather forecasting and to increase the accuracy of those predictions. Until now, meteorologists have had little knowledge of how "long waves"—giant atmospheric waves encircling the globe—operate, or how the complex weather dynamics of the tropics affect other climates.

How this new information will add to the precision and length of forecasts can be shown with the following example. To make a one or two day weather prediction for Washington, D.C., measurements must be made from earth and sea surfaces up to 10 kilometers into the atmosphere.

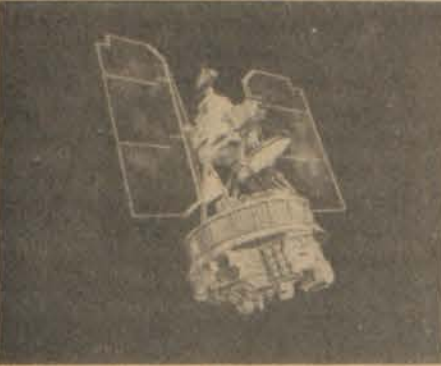
To predict Washington's weather for a period of four to ten days, however, requires measurements below and 30 kilometers above the sea, extending from 20 degrees south latitude (about Rio de Janeiro) to the North Pole.

Before the Global Weather Experiment, such extended forecasts would have been impossible. But improved satellite observing systems now cover (at a reasonable cost) areas in the southern hemisphere that would have required hundreds of expensive, stationary weather bases.

The experiment's data will also help to improve our understanding of the physical basis of climate. For instance, the seasonal cycle is comparable to changes in climate that have occurred over thousands and millions of years.

Potential Changes and Uses

The extended length and accuracy of future weather forecasts will serve more than the convenience of vacationers and sunbathers. An entire range of industries—



construction, utilities, transportation and energy among others—could make enormous financial savings through a long-range awareness of weather patterns.

In the construction industry, knowledge of the coming weather would allow for better scheduling of projects, avoiding building delays due to storms and cold.

Utilities would be better able to plan ahead to meet special generating requirements in cases of extreme hot or cold. They could stock up on fuel, arrange interconnections with fuel surplus areas, and otherwise cope with increased demand.

With an improved understanding of the atmosphere, environmentalists would be able to evaluate the actual and potential effects of pollution.

City and state governments would also be helped by longer range forecasts—especially in winter when they might get earlier warning of blizzards. Workers and equipment could be mobilized in time to deal with the resulting problems.

So many everyday decisions depend on the weather that it is impossible to calculate all the ways in which better advance knowledge of weather would affect our economy and our citizens.

Stormy Weather

All that advance information won't do you any good if you don't know just what it is the weatherman is saying. Not all weather vocabulary is clear, especially in winter, so the National Weather Service provides this vocabulary list:

- Severe Weather Watch: Severe weather or storms may occur.
Severe Weather Warning: Severe weather will almost certainly occur, and may endanger life and property.
Snow: A prediction of snow usually means a steady fall for several hours.
Blizzard: A severe weather warning given out when a considerable snow is accompanied by winds of 35 miles an hour or more.
Freezing Rain or Freezing Drizzle: Means that a thin coating of ice is expected to form over roads and pavements, making driving and walking hazardous.
Ice Storms: Refer to ice coatings that may damage trees and utility lines.
Traveler's Advisories: These are issued when severe weather conditions impair visibility, slicken road surfaces or otherwise hamper driving ability.
Stockmen's Advisories: Alert ranchers and farmers to wet, chilling conditions that could harm any livestock left in the open.

KET Program Spotlights Displaced Homemakers

Deserted wives, widows and other women who suddenly find themselves in the job market without marketable skills are the subjects of a special edition of "The People's Voice."

This 30-minute program of the KET-produced series spotlights these "displaced homemakers" on Tuesday, January 15 at 7:30 p.m.

The program highlights a four-hour seminar on displaced homemakers held at Crestwood Christian Church, Lexington, Ky. on November 26, sponsored by the Local Chapter of the American Association of University Women (AAUW).

"These are not battered wives," states producer Jonas Chaney, "but women who find themselves alone and who for the first time must assume responsibility as major 'bread-winners' for the family."

The seminar featured an exchange between women who presently are or have been displaced homemakers, and representatives from the state legislature and various public and private agencies.

Among the panelists were Dr. Ali Hixon, planning coordinator for the seminar; Joan Nakajima, public information officer for the Bluegrass Employment and Training Program; Margaret Stewart, dean of the University of Kentucky College of Home Economics; and June King of the National Organization of women.

A main objective of the seminar was fund-seeking for multi-purpose centers for the displaced homemaker—places where women can go to get skills improved and get in touch with agencies that can assist them.

"Many of these women have been out of the job market for a long time," adds Chaney. "Some have been homemakers all their lives. To compete for jobs they need skills and that's what this edition of 'The People's Voice' is focusing on—getting these women the help they need."

SPEND HOLIDAYS AT HAROLD

Mrs. Grace H. Perdue, of Catlettsburg, and Mrs. Mae H. Hinchman, of Huntington, W. Va., were here this week on their way to Harold to spend Christmas with their sister, Mrs. Alonzo Ferrell.

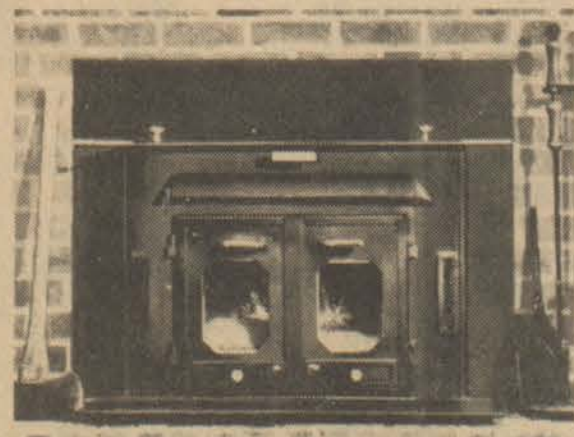
They also visited their brother, Carl P. Hatcher, and Mrs. Hatcher, of Coal Run Village.

Wickes Lumber Water Heater SALE! SAVE UP TO \$71. 40 GALLON GAS \$134.95. 50 GALLON GAS \$159.95. GAS AND ELECTRIC WATER HEATER INSTALLATION KITS. GAS \$17.49. ELEC. \$12.99. U.S. 23 ALLEN, KY. STORE HOURS: MONDAY-FRIDAY, 8:00-5:00. SATURDAY, 8:00-5:00.

ON THE AVERAGE, EVERY BUCK STOVE OWNER SENDS US FIVE NEW CUSTOMERS.

Doesn't that tell you something?

Sure it does. But not nearly enough. You need to know about our guaranteed all-steel construction and clean, elegant styling—suitable for any home.



Want to know more? We've got a free brochure for you with facts and figures, drawings and photographs. So stop by to see us. Let us introduce ourselves, share our wood-burning wisdom with you and show you the wood stove that all America loves.

Exclusive Buck Stove Dealers: BUCK STOVE STORES. NORTH MAYO TRAIL — PIKEVILLE, KY. — (606) 437-4917. Mgr. Phyllis Cummins 437-7183. OWNERS: Johnny Burke, Jr.—886-8738. Gary Hoefler—789-4851.

New Subscription Rates Per Year. In Floyd County, \$6.75. Elsewhere in Kentucky, \$8. Outside Kentucky, \$10.

LEA-ANN PORTRAITS Full Living Color PACKAGE SPECIAL. 4-8x10, 3-5x7, 15-Wallets. Only 14.95. You Pay 4.00 at Sitting—10.95 at Delivery. NO APPOINTMENT NECESSARY. PIGGLY WIGGLY SUPERMARKET. PRESTONSBURG, KY. Thurs.-Fri., Jan. 17-18. Time: 1 to 7 p.m.

SALE

Best Buys



TG&Y®

family centers



May Plaza Pointsville

.46

Northern® Napkins
Assorted colors to choose from. 140 ct. pkg. Limit 2

.99

Concentrated All® Detergent. 49 oz. box. Limit 2

.83

Final Touch® Fabric Softener for soft, clean smelling clothes. 33 oz. Limit 2

.59

Twice As Fresh® Air Freshener in Lemon Blossom, Rose Petal and Autumn Harvest fragrances. Limit 2

.67

Super Glue 3® Bonds permanently in seconds. Clear glue, .11 oz. tube. Limit 2

.99

Brake Fluid Meets all DOT specifications. 12 oz. can.

69.88

Mac 110 Chain Saw features 2.0 cubic inch engine, automatic and manual oiling and 10 inch cutting bar. A good buy in a lightweight saw!



2.56 save 26%
Letter File Plastic file with lock and key. Avocado.



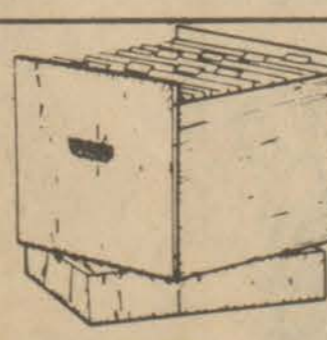
3.66 save 1.33
Jumbo Letter File 10x-12½x9" metal file with lock. Walnut.



.99 save 47%
Adding Machine Tape 3-roll package. 2¼"x179".



.99
Appointment Book Ruled for ½ hr. appointments, wire bound back. 5x8".



4.66 save 1.22
Portable File 13x-12x10" with 12 hanging file folders.



26.88 save 7.11
Metal File Cabinet 2-drawer with lock.
41.88 save 8.11
Metal File Cabinet 4-drawer with lock.

TG&Y'S ADVERTISED MERCHANDISE POLICY—TG&Y's policy is to always have advertised merchandise in adequate supply in our stores. In the event the advertised merchandise is not available due to unforeseen reasons, TG&Y will provide a Rain Check, upon request, in order that the merchandise may be purchased at the sale price when it becomes available, or you may purchase similar quality merchandise at a similar price reduction. We will be happy to refund your money if you are not satisfied with your purchase. It is the policy of TG&Y to see that you are happy with your purchases.



Your best buy is at TG&Y!

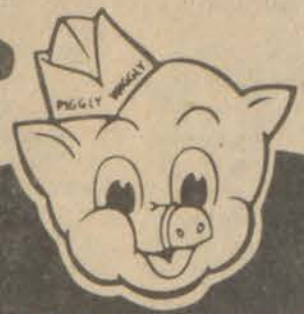


Pass it on...

Savvy Shoppers

Save at

• QUANTITY RIGHTS RESERVED



PIGGLY WIGGLY

• PRICES ON THIS AD GOOD WEDNES., JAN. 9 THRU SUN., JAN. 13, 1980

VALLEYDALE BUTT PORTION
5-6 LB. AVG.

Smoked Ham Lb. **\$1 39**

CENTER SLICES

Smoked Ham Lb. **\$1 79**

PROTEIN PLUS

Ground Meat Lb. **99¢**

FRYING WHOLE

Chicken Legs Lb. **79¢**

VALLEYDALE CHUNK

Bologna Lb. **99¢**

FRESH

Dressed Trout Lb. **99¢**



VALLEYDALE SHANK PORTION
Smoked Ham
6-8 Lb. Avg.

79¢
POUND

Maxwell House
Instant Coffee
\$4 79
10-Oz. Jar

Tropicana Pure
Orange Juice
\$1 19
64-Oz. Btl.

Bush's Best
Pinto Beans
4 For \$1
15-Oz. Can

Personal Size
Ivory Bar Soap
4 Pk. 69¢
10c Off Label



BLUE BONNET
SPREAD BOWL

Margarine
\$1 12
2-Lb. Pkg.

PILLSBURY

Big Country Biscuits 12 Oz. Can **39¢**

DEL MONTE

Catsup 24 Oz. Btl. **67¢**

RONCO

Elbow Macaroni 12 Oz. Pkg. **2 For 89¢**

BUSH'S BEST CHOPPED

Kraut 11 Oz. Pkg. **4 For \$1**

PIGGLY WIGGLY

Pork & Beans 15 Oz. Can **4 For \$1**

FARMBEST

Ice Cream Sandwiches 12 Pk. **\$1 19**

CHEF-BOY-AR-DEE ASST.

Frozen Pizza 14 Oz. Pkg. **89¢**

HANDY

Comet Cleanser 21 Oz. Cont. **46¢**



KRAFT
Macaroni & Cheese

Dinner
3 89¢
For

FRESH PRODUCE ALWAYS AT PIGGLY WIGGLY!

California Navel
Oranges
6 99¢
For
56 Size

Delicious
Green Onions Bunch **26¢**
Washington State Extra Fancy Red
Delicious or Gold
Apples Lb. **42¢**
Florida
Yellow Corn 5 Pk. Tray **78¢**
Bananas 4 lbs. **\$1 00**

STORE HOURS:

Sun., 10:00 a.m.-9:00 p.m.
Mon., 8:00 a.m.-9:00 p.m.
Tues., 8:00 a.m.-9:00 p.m.
Wed., 8:00 a.m.-9:00 p.m.
Thurs., 8:00 a.m.-9:00 p.m.
Fri., 8:00 a.m.-10:00 p.m.
Sat., 8:00 a.m.-9:00 p.m.



PIGGLY WIGGLY

• NOT RESPONSIBLE FOR PRINTER'S ERRORS

North Lake Drive

TOWN & COUNTRY

INVITES YOU TO SEE THE ALL-NEW 1980 FORD CARS & TRUCKS

TOWN & COUNTRY FORD INVITES ALL OUR FRIENDS TO COME TEST-DRIVE THE EXCITING NEW, FUEL-EFFICIENT 1980 FORDS.

**"BEST THUNDERBIRD MPG EVER:
UP 29%. HIGHWAY UP 30%!"**

AVAILABLE WITH THE FIRST AND ONLY AUTOMATIC OVERDRIVE TRANSMISSION IN AN AMERICAN-MADE CAR. At about 40 MPH, this optional new transmission shifts into overdrive. Car speed remains the same. But the overdrive fourth gear lets the engine run one-third slower. That can save you gas and money. Prove it to yourself with a test drive.

18	EPA EST. MPG	26	EST. HWY. MPG
-----------	--------------------	-----------	---------------------

MPG estimates are for comparison. Your mileage may differ depending on speed, distance and weather. Actual highway mileage will probably be lower than estimate. Comparisons are based on EPA data since ratings began.



THUNDERBIRD EXTERIOR LUXURY GROUP
Options: Hood stripes • Wide door belt moldings
• Cast aluminum wheels and TR-type WSW tires

SEE AND DRIVE OUR NEW THUNDERBIRD TODAY!



Why not major in economics?

WITH A 1980 FORD FIESTA.

Ford's front wheel drive Fiesta has been applauded all over Europe by European experts for its engineering, design and overall performance. Fiesta. The Wundercar from Germany.

1980 EPA Estimates	
28	39
EPA EST. MPG	HWY. EST. MPG

For comparison, Diesels excluded. Your MPG may differ depending on speed, distance and weather. Actual HWY. MPG will probably be lower than estimate. Calif. MPG is lower.

DISCOVER THE FUN-TO-DRIVE '80 FORD FIESTA

THE FORD MUSTANG—A SPORTS CAR FOR THE 80's.

It's passed all its tests!

The U.S. Auto Club recently put Mustang through a series of tests against a number of popular sports cars. Mustang's performance earned it official USAC certification as a sports car. Sports car performance. Looks. Luxury. And impressive fuel economy. That's Ford Mustang. A Sports Car for the 80's. Check it out—and check out our student deal. They're both super.

23	EPA EST. MPG	36	HWY. EST. MPG
-----------	--------------------	-----------	---------------------

For comparison. Your MPG may differ depending on speed, distance and weather. Actual HWY. MPG will probably be lower than estimate. Calif. MPG is lower.



MUSTANG 3-DOOR
Options: Interior Accent Group • WSW tires
• Pin stripes

These Salespersons Will Be On Hand To Serve You:

- RALPH STEVENS • CHESTER PACK • DALE BOYD • GARY MEADE • TOMMY CESCO • OSCAR RICE • HAROLETTA POTTER • MIKE MEADE • BERT McFADDIN • SCOTT MOORE

WE ARE OPEN MONDAY THRU FRIDAY UNTIL 6 P.M., AND SATURDAY TILL 5.

Town & Country

FORD • LINCOLN • MERCURY

Lancer-Water Gap Road
Phone 874-2133



DEALS FOR THE WORKING MAN

1975 COUGAR XR-7

V-8 engine, automatic, air-conditioning, AM-FM, high miles but runs good.

\$1888

1978 NOVA 2-DOOR

Six-cylinder, automatic, power steering, air-conditioning. Nice family car.

\$3988

1978 CAMARO RALLYE SPORT

V-8, automatic, air-conditioned, AM-FM, tape, bucket seats, floor shift. Sharp locally-owned car.

\$4988

1978 CHEVY PICKUP 4x4

V-8, automatic, long wheelbase, mud and snow tires.

\$4888

1978 JEEP CHEROKEE 4-DOOR

V-8 engine, automatic, air-conditioned, 4WD, AM-FM and more.

\$4988

1977 FORD F-150 4x4

Positively the sharpest used four-wheel drive in town. Has V-8, automatic, air-conditioned, AM-FM, custom paint job, white spoked mags, etc.

\$4777

1977 FORD RANCHERO

V-8, automatic, air-conditioning, power windows, AM-FM tape, GT package, etc. Needs paint job.

\$1995

1977 FORD LTD II

4-door, V-8, automatic, air-conditioning, four new tires. Traded in by a man from Bull Creek... a good, sound, local car.

\$2995

74 GRAND PRIX

V-8, automatic, air-conditioning. Only 24,000 original miles on this Floyd county car.

\$2495

1976 CHEVROLET BLAZER

V-8, automatic, big fat tires, chrome rims, optional fox hound interior (was previously owned by a hunter!). Good shape except for driver's side fender.

\$2995

1976 CHEVROLET PICKUP

V-8, automatic, air-conditioning, Cheyenne package, 8-ft. bed, new paint, new tires, rear step bumper.

\$2995

1977 FORD GRANADA

V-8, automatic, air-conditioning, white with red interior. Good, sound body, 45,000 miles.

\$2995

Call VIC GOBLE or J. W. Prim 886-8149

GRAY & GRAY AUTO SALES

Prestonsburg, Ky.

SELL IT FAST! BUY IT RIGHT! USE WANTADS!

NOTICE TO ADVERTISERS

All classified ads scheduled for only one week, must be paid in advance. All classified ads with only telephone numbers must be paid in advance.

FOR SALE—Bass boat, practically new motor, four seats. \$2,000. Phone 447-2341. ROSETTA HALL, Topmost, Ky. 41862. 12-19-31.

FOR SALE—1975 GL 1000 Honda. Excellent condition—all extras. 8,000 miles. \$2,000. Call 886-6299. Doug Reffett, David, Ky. 12-19-41-pd.

FOR RENT—two-bedroom trailer, one mile from Prestonsburg. Call 886-6694. 12-19-pd.

HOUSE FOR SALE—Upper Burton. Four rooms, bath, own water, cheap utilities. Call 452-2330. Bobby Jones, Bypro. 1-2-21.

FOR HIRE—Backhoe and dump truck. Septic tank and other service. Call 358-9142. Laymond Bragg, Eastern, Ky. 12-12-41.

FOR SALE—1978 Grand Prix. Like new, fully loaded. T-Top. Under 700 miles. 301 V8 engine. Good gas mileage. Call 377-6994. 12-12-41-pd.

WANTED—live-in housekeeper and babysitter. Must be over 20. Call 886-2510. 1-1-61-pd.

FOR SALE—1977 Ford Pinto. Only 19,000 actual miles. \$2300. Call 886-9969, during the day; 886-6307, after 6 p.m. 1-2-41.

BURGLAR ALARMS, FIRE ALARMS—Commercial and residential. Sales, installation and 24-hour service. Free estimates. 21st Century Electronics, phone 886-9400. 1-2-41.

COMMERCIAL SOUND SYSTEMS—Background music, paging. Sales, installation and service. Free estimates. 21st Century Electronics, phone 886-9400. 1-2-41.

FOR SALE—1977 Ford Pickup, 15 cu. ft. Whirlpool refrigerator. Want to buy—treadmill exerciser. Call 886-3956. 11-pd.

FOR SALE—Office machines, office supplies, office furniture (new and used). Service on all makes of office machines. Phone or write BERT BIBBEE, HOME OFFICE SUPPLY CO., phone 436-5711, Hazard, Ky. 1-2-41.

FOR SALE—Used office furniture. MARTIN'S FURNITURE, 874-9928. 11-21-41.

LOTS FOR SALE at Taylor Stumbo home place on Old 114. Approved by FHA. 11-21-41.

FOR SALE—Three-bedroom brick home in Branham Village. Call 886-2818 after 5 p.m. John Wallen. 11-21-41.

HOUSE FOR SALE—4 miles up Branham's Creek. Call 886-8159 or 587-2216. 11-21-41.

FOR SALE—1968 Ambassador. Good condition. Real cheap. Darline Adkins, East McDowell, Ky., Phone 377-6172. 1-2-21.

FOR SALE—1976 mobile home and lot. \$14,000. Located at Garret, 3 miles up Rock Fork, on left. Call 358-4571. 1-2-21-pd.

FOR RENT—Two-story house, Clark School district. If interested, call 498-6249, Dale Seat. 12-12-41.

FOR RENT—Two-bedroom house, 63 Arnold Avenue, Prestonsburg. \$250 per month plus deposit. Call 874-2084. 10-3-41.

FOR SALE—1976 Ford 4-wheel drive. Excellent condition. Call 886-8724. 11-21-41.

\$250 - \$500 ATTRACTIVE POSITION for woman or man of neat appearance and good character. Pleasant work and no layoffs. Earnings opportunity \$250-500 per week. Good advancement. Education or experience not important. Phone 874-9041. Equal Opportunity Employer. 11-28-41.

SPARE TIME \$300 a week part-time opportunity. No investment. Phone 874-9041. Equal Opportunity Employer. 11-28-41.

HOWARD PERRY—Painting, drywalling, carpenter work. After 4 p.m. Call 886-2183. 11-21-251-pd.

SOCIAL AND PATIENT ADVOCACY POSITIONS open at the Big Sandy Health Care Mud Creek and Salyersville Clinics. The working hours are from 8 a.m. to 4:30 p.m., Monday through Friday. Applicants must be state-certified social workers. If interested, contact the Personnel Office at 886-8546 or 349-3110. 10-31-41.

DENTAL ASSISTANT POSITION open at the Salyersville Clinic of Big Sandy Health Care, Inc. The working hours are from 8 a.m. to 6 p.m., Monday through Thursday. Applications will be taken at the clinic or at the central office in Prestonsburg. Experience necessary. Call for more information at 886-8546 or 349-3110, Personnel Office. 10-31-41.

NURSE PRACTITIONER POSITION open at the Big Sandy Health Care, Inc., Wheelwright Clinic. The working hours are from 8:30 a.m. to 5 p.m., Monday through Friday. Applications will be taken at the clinic or at the central office in Prestonsburg. If interested, contact the Personnel Office at 886-8546. 10-31-41.

FOR RENT—Trailer lots two miles up Cow Creek. Out of high water. \$55 per month includes water. Call 874-2802 after 5. Janice Ratliff. 11-21-61.

EASTERN TRADING POST. Good used furniture, appliances, miscellaneous. Where we treat you right. Satisfaction guaranteed. Call 358-9617 or 358-9161. 9-26-41.

FOR SALE—One-third interest fee simple, two hundred forty acres of land located in Martin, Johnson, Floyd counties, Kentucky. Land is unleased. Four veins of coal. Owner desires to sell. Call FRANK CRAIN at 1-502-765-7684. 11-28-81-pd.

TRADE IN YOUR OLD ON OUR NEW NAME-BRAND FURNITURE AT MARTIN'S FURNITURE

Check our everyday DISCOUNT prices before you buy. Do you need office furniture... We accept trade-ins on our new PAOLI OFFICE FURNITURE. Directions: At the Allen, Ky. intersection of U.S. 23 turn on KY 1428 West—we're located on the 3-mile marker. 9 a.m. to 5 p.m., Mon. thru Sat. PHONE 874-9928 1-9-41.

LOCAL COMPANY NEEDS—3 people to start immediately. \$650 per month to start. Call 886-6749. 11-pd.

LOCAL COMPANY HAS IMMEDIATE OPENINGS for 2 manager trainees. Call Mr. Dodd 10-3 Wednesday only 886-6749. 11-pd.

FOR SALE BY OWNER—Spacious tri-level home near Highlands Regional Medical Center, on 2 1/2 acres of woodland. Three bedrooms, 2 1/2 baths, large laundry room, built-in kitchen with refrigerator, custom-built cabinets throughout, stone fireplace, 2 large private decks, double carport and basement. Well-landscaped yard. Striking antique stained glass window. \$90,000 886-6277. 1-9-41.

Interior and exterior Porter paint, 1,000 colors to choose from. BEN FRANKLIN STORE, phone 886-2169, Prestonsburg. 5-16-41.

FOR SALE—Sand, washed and screened, wet, dry or sacked. Ideal for mine use of buildings. SANDS OF ROCKCASTLE CREEK, Inez, Kentucky, phone 298-3828, day, 298-3314, night. 11-17-41.

LAND FOR LEASE—Approximately four acres of level ground, 1300 x 250 feet, located in Goble Roberts Addition area across railroad tracks from shoe factory building. Most suitable for commercial purpose. Long-term lease available. Call Clyde Burchett at 886-2734 or 886-2412. 3-14-41.

CUSTOM MADE drapes and matching bedspreads by R. W. Norman and McCanless. Measured to fit. BEN FRANKLIN STORE, phone 886-2169, or Sally Goebel, phone 886-2657. 5-16-41.

WATCH REPAIR—If you want the best job, bring watch repairs and jewelry repairs to WRIGHT BROS. JEWELERS.

FOR ALL your athletic needs, see Wells-Hamilton Sporting Goods, 101 Court Street, Prestonsburg. Phone 886-9969.

BE DISCRIMINATING! Visit THE CHANDLER HOUSE ANTIQUES & COLLECTIBLES Jefferson Ave., Paintsville, Ky. Hours 12:00 to 10:00 p.m. 5-9-41.

FOR RENT—Office space with three rooms, 526 square feet, upstairs over Fountain Korner. 886-2431. Allen and Burke. 6-27-41.

PREFINISHED PANELING. 10 percent off, cash and carry, at GOBLE LUMBER CO. over 60 different styles to choose from - as low as \$3.99 for 4 x 8 panel. Phone 874-9281. 4-11-41.

OFFICE SPACE FOR RENT—In Prestonsburg, 2nd Floor over Montgomery Ward. Outside private entrance. Newly remodeled, utilities paid. Free parking. Phone 886-6900. 11-21-41.

PERMA-SHIELD Anderson windows. All styles. 20 percent off regular price at GOBLE LUMBER CO., Phone 874-9281. 4-11-41.

FORD—The number one name in trucks can be yours for as little as \$4175 at Town and Country Ford Lincoln Mercury. 874-2133. 3-14-41.

FOR SALE—60 acres timber land with coal, 1/2 in gas rental. \$12,000. Kelson Shepherd heirs. DOROTHY ROLLYSON, Box 20, Rt. 2, Frametown, W. Va., phone 364-8642. 12-5-51-pd.

FOR SALE—90 acres of wooded land in Paint Creek Dam area. All mineral rights. Ideal for cabins. Phone 789-5868. 12-5-41.

FOR SALE—1977 Lincoln Town car. 4-dr., Loaded. Black. \$5,000. Call 874-2793 or 886-2426. Jerry Kinzer. 12-5-41.

L.P.N. POSITION open at the Big Sandy Health Care, Inc., Salyersville Clinic. The working hours are from 8:00 a.m. to 4:30 p.m., Monday through Friday. Salary is negotiable, depending upon experience. To apply, contact Jackie Shelton at 886-8546 or go by the clinic for an application. 12-4-41.

PAPER HANGING, painting, ceramic, tile, textured ceilings. Free estimates. Call 874-2454. 12-4-161-pd.

HELP WANTED—Male or female. Lexington-Herald morning newspaper need carriers for the following routes: No. 1, Beaver, Hindman and Caney area. Profit approximately \$550 per month plus \$300 transportation. No. 2, Allen, Middle Creek, Abbott area. Profit approximately \$400 per month plus \$150 transportation. Call 886-3552 or 1-800-432-9548. 12-5-41.

FOR RENT—two trailer spaces, just outside city limits. Call 886-2474 or 886-2243. 1-2-21-pd.

HOUSE FOR RENT—In Emma. 3 bedroom, 2 bath, carpeting throughout. No pets, please. Security deposit required. Call 886-8558. 1-2-21-pd.

FARM FOR SALE—At Mt. Sterling. 3-bdrm. trailer all electric, and house with 5 rooms and bath, 2 ponds, tobacco base, barn and outbuildings, orchard. For information call: 498-2248. 1-2-21.

FOR SALE—1977 Monte Carlo. Every available option. 25,000 actual miles. Small V-8, excellent mileage. Like new. \$4300. Call Ralph R. Martin, 587-2540. 1-2-41.

FOR RENT

One-bedroom furnished apartment. Winchester Apartments. Call, after 5, 874-9928. 1-9-41.

FOR SALE—Ford Granada ESS, 2-door, automatic transmission, power steering, air-conditioning, AM-FM 8-track stereo. Equipped with 6-cylinder motor rated at 24 mpg. Has less than 3,000 miles with 9 months or 9,000-mile warranty remaining. Phone 886-9881 anytime. 11-pd.

FOR SALE—1973 Chevrolet Caprice Estate Wagon. Three-seat, nine passenger, four-door, AM-FM radio, all electric, priced to sell. 886-3075 or 886-6345. D. Spurlock, Prestonsburg, IT.

APARTMENT FOR RENT—\$300 per month, includes all utilities. Bryant Derossett. 11.

COMMUNITY DEVELOPMENT JOB OPPORTUNITIES—Two positions available at Mountain Association for Community Economic Development, a non-profit development organization: 1) Business Development Specialist with experienced and/or education in small business; 2) Housing Development Specialist with private or non-profit housing development experience. Contact MACED, 213 Short Street, Berea, KY 40403 (606) 986-8497. Equal Opportunity Employer. 11.

FOR SALE—1955 Chevy 2-door Sedan. Call 285-3734, anytime. 11-pd.

PIANOS, Baldwin & Wurlitzer, Big selection, honest values. No "balance due" gimmicks. Easiest payments. ZWICK MUSIC CO., 325 14th St., Ashland. 11-15-41.

TREATED utility poles, 18 ft., 20 ft., and 25 ft. lengths. Also fence posts at GOBLE LUMBER CO., Phone 874-9281. 4-11-41.

OWENS MUSIC CENTER High quality—low prices. Excellent service. Phone 886-8337. 1-16-41.

FOR SALE—Used furniture—odds-and-ends. MARTIN'S FURNITURE BASEMENT 874-9928. 5-2-41.

BILLY VICARS MASON—Brick, block, fireplaces, concrete. Phone 452-4425, Billy Vicars, Melvin. 3-14-41.

VISIT GOBLE LUMBER'S PANELING CENTER. Over 60 different styles to choose from and as low as \$3.99 per panel. Phone 874-9281. 4-11-41.

HOUSE TRAILERS MOVED and Wrecker Service—See NICK SHEPHERD, Phone 358-9367, Box 141, Wayland, Ky. 5-30-41.

CHAIN LINK FENCE, residential and commercial. Call Henry Setser, Phone 886-2073. 8-29-41.

PATTON'S ANTIQUES—Box 131, Langley, Ky, on KY 80. Dealing in Depression glass, antiques, antique furniture. Phone 285-3357. 1-10-41.

HOME

HEATING AND COOLING

P.O. Box 18 Phone 874-9841 Allen, Ky. 41601

WE HAVE TEAMED TOGETHER WITH SOME OF THE FINEST HEATING AND COOLING SUPPLIERS IN OUR REGION TO BRING YOU THE CONSUMER THE UTMOST IN HOME COMFORT. WE EXPERTLY INSTALL AND SERVICE OUR PRODUCTS AT A SAVINGS TO YOU. (OUR CUSTOMERS HAVE SAVED HUNDREDS OF DOLLARS ON THE INSTALLATION OF NEW UNITS, AND THAT'S THE NAME OF THE GAME THIS DAY AND TIME).

IF YOU ARE HAVING A PROBLEM WITH YOUR PRESENT HEATING SYSTEM, GIVE US A CALL TODAY AT 874-9841.

ATTENTION, MOBILE HOME OWNERS!

ARE YOU TIRED OF HEARING THE SAME OLD STORY—"WE DON'T REPAIR MOBILE HOME HEATING". THEN CALL US, WE HAVE HAD SEVENTEEN (17) YEARS EXPERIENCE REPAIRING YOUR KIND OF HEATING SYSTEM.

SO REMEMBER, IF YOU ARE CONSTRUCTING A NEW HOME OR JUST WANT TO UPGRADE YOUR PRESENT HEATING OR COOLING SYSTEM, CALL US BETWEEN 6 A.M. & 8:30 A.M., OR ANYTIME AFTER 5 P.M.:

874-9841

HIGH DOLLARS FOR YOUR COAL LEASE

\$\$\$\$\$\$\$\$\$\$\$\$\$\$\$\$

LEASE OR SUB-LEASE. STRIP, AUGER OR DEEP MINE. CALL TODAY FOR THE BEST DEAL.

\$\$\$\$\$\$\$\$\$\$\$\$\$\$\$\$

Call Collect:

606-886-8506

WANTED PRE-1970 Baseball cards. Call 638-9072 or 638-4792, Louisa, Ky. 1-2-21-pd.

FOR SALE—Three-bedroom home at Hueysville. All electric, air-conditioned, carpet throughout except utility room. Stove and refrigerator, large lot plus an 8x10 outbuilding. Call J. C. Spencer at 358-9342 or 606-273-1496. 1-2-21.

REGIONAL PLANNER I—Regional Planning agency is seeking an entry level planner to work with FmHA 601 Energy Impact Program and regional development activities. Responsibilities include data collection, regional surveys; site identification and analysis and preparation of studies and reports. Requirements include a Bachelor's degree in Planning or related field with experience in drafting-graphics desirable. Starting salary \$12,000. Send resume to Mr. Joseph McCauley, Executive Director, Big Sandy Area Development District, 122 N. Lake Drive, Prestonsburg, Kentucky 41653. An equal opportunity employer. 1-2-21.

WANTED TO RENT—Two or three-bedroom home for family of five. Needed by Jan. 21. Call, collect, 606-561-5803 after 6 p.m. 1-2-31.

FOR SALE—1979 Rivera. Blue with velvet interior, loaded. Excellent condition. 7,000 miles. 886-2314 or 886-3392. 1-2-31-pd.

FOR RENT—3 bedroom brick house, Riverside drive call 886-2763 or 886-6448. 1-2-31-pd.

LOT FOR SALE—100 x 125-ft. lot 100-ft. front, \$8,000; 150-ft. front, \$12,000. 2 1/2 miles from Prestonsburg. Call 886-8065, after 6 p.m. 1-2-41-pd.

FOR SALE—Two-bedroom trailer; Baldwin piano and car top luggage carrier. Phone 437-6688. 1-2-5-pd.

FOR SALE—1969 Royalty Mobile Home, 12 x 50, oil furnace with tank to go with it. Price: \$2,500. Phone 874-9171 or 478-9423. 1-2-51.

HOUSE AND LOT for sale at Orkney. Includes 50 acres. Call First National Bank, Prestonsburg, 886-2321. 1-2-41.

AUTO CREDIT—Need a car but have credit problems? With a low down payment and weekly pay plan I can finance a car for you. Call Vic, 886-8149, or 789-6026. 1-2-41.

FOR SALE—Gas range, refrigerator, avocado; washer and dryer, white; wood cabinets, \$20 each. Two rockers, miscellaneous items. Dena Patton, 886-8781. 1-9-21.

DEALS YOU WON'T BELIEVE! 1979 Chevrolet truck, 4-wheel drive, 3-4 ton heavy duty, air-conditioned, AM-FM radio. 1979 Thunderbird, air-conditioned, AM-FM radio, tape deck, low mileage. Call 9496. 1-9-31-pd.

FIREWOOD FOR SALE—\$30 per truck load delivered. Call 886-9657. Russell Shepherd. 1-9-21.

FOR SALE—meat cutting equipment. Large saw, large grinder and steak maker. Phone 285-9594. 1-9-31-pd.

WANTED—to lease or buy—site for church, in Tram area. Call Walter Simpson or Mary Ruth Jennings, 478-9830. 1-9-31-pd.

INCOME TAX PREPARATION in my home. Phone 886-9435. Arnold Moore. 1-9-31.

HOUSE FOR SALE—Two-story, three-bedroom, bath living room, kitchen, on large lot. Across from Methodist church at Emma. Call 304-736-3564. Amor Childers. 1-9-41.

FOR SALE—New three bedroom home located on Left Beaver. Two baths, family room with fireplace. 886-9694. 1-9-41-pd.

FOR SALE—Three-bedroom home in Prestonsburg. 886-9694. 1-9-41-pd.

FOR SALE—1977 Jeep Cherokee. 30,000 miles, automatic transmission, power steering and brakes, air-conditioning, tilt wheel, cruise control, AM-FM radio, four new tires. \$4,000. Call 886-6967 after 5 p.m. 1-9-41-pd.

FOR SALE—86 acres timberland located on Caney Fork of Middle Creek. Will sell in part. 502-885-1685 or 886-2170 Hopkinsville, Ky. 1-9-41.

PEW CUSHIONS—for extra comfort and beauty for your church. Cushions made to your specifications with the best materials. For more information phone 606-886-8454 or 606-886-3399. 1-9-41-pd.

FOR SALE—Five lots at Garrett, Ky. Water and gas available. Call 886-9069. 1-9-41.

REMODELING, with excellent finishing work. Will also do wiring. Can do any type of remodeling or maintenance job. Free estimates. Call 886-3447, after 5 p.m. 1-9-81-pd.

WE ARE BUYING AGAIN! Sell your used furniture and appliances, books and miscellaneous. Call 358-9617, Eastern Trading Post. 1-9-41.



SUNDRY STORE COUPON

We guarantee these disposable diapers to be of equal or better quality than pampers or we will refund your money - no questions asked!

GOOD FOR 50¢ CASH
WITH YOUR PURCHASE OF

DAY & NIGHT DISPOSABLE DIAPERS

More absorbent where it counts to keep baby drier. Less diaper rash because no plastic touches babies skin.
Limit 2 Per Customer - Expires 2/10/80

SUNDRY STORE COUPON

BIG 6 LB. 3 OZ. BONUS SIZE 6 EXTRA CUPS FREE



TIDE LAUNDRY DETERGENT ONLY \$2.88 WITH THIS COUPON

Limit 2 Per Customer Expires 1/18/80

SUNDRY STORE COUPON

BIG 64 OZ. SIZE PUREX BLEACH ONLY



47¢ WITH THIS COUPON

Limit 2 Per Customer Expires 1/18/80

SUNDRY STORE COUPON

8 OZ. SIZE PEPTO-BISMOL LIQUID



\$2.00 MFG. SUGGESTED VALUE \$1.19 WITH THIS COUPON

Limit 2 Per Customer Expires 1/8/80

SUNDRY STORE COUPON

5 OZ. SIZE DENTAL CREAM COLGATE ONLY!



83¢ WITH THIS COUPON

Limit 2 Per Customer Expires 1/18/80

SUNDRY STORE COUPON

BIG 12 OZ. SIZE WHITE RAIN SHAMPOO ONLY!



59¢ WITH THIS COUPON

Limit 2 Per Customer Expires 1/18/80

SUNDRY STORE COUPON

1 OZ. SIZE ARRID EXTRA DRY POWDER



ROLL-ON \$1.44 WITH THIS COUPON

Limit 2 Per Customer Expires 1/18/80

SUNDRY STORE COUPON

BIG 8 OZ. BAG KING KUP



PEANUT BUTTER CUPS ONLY! 77¢ WITH THIS COUPON

Limit 2 Per Customer Expires 1/18/80

SELL IT FAST! BUY IT RIGHT! USE WANT ADS!

FOR RENT—Nice two-bedroom house, mouth Cow Creek. Fully carpeted, city utilities. Elderly couple preferred. No pets please. \$225 per month plus security deposit. Call 874-2325. 11-pd.

FOR SALE—10 x 50 mobile home. DONNA SHEPHERD, West Prestonsburg, phone 886-9683. 1-9-2t.

FOR SALE—Washer and dryer, dresser and chest, 9" black and white TV, sewing machine. Will sale at reasonable prices. Call 874-9587 after 5 p.m. 1-9-2t-pd.

PHARMACY AIDE—Opportunity to be part of the health care team at Highlands Regional by assisting the pharmacy and nursing staff. Experience in dispensing pharmacy preferred, but will consider individual with good work record and references. Mainly day shift but schedule includes some afternoon shifts each month. Applications available at Information Desk 9 a.m. - 4 p.m., Mon. - Fri., Highlands Regional Medical Center on U.S. 23 between Paintsville and Prestonsburg, 886-8511, Ext. 558. An equal opportunity employer. 1-9-2t.

PUPPIES to give away. Call 886-2916. 1-9-2t-pd.

FOR SALE—six wheels and tires for a 3-bedroom mobile home. Call 886-1815. 1-9-2t.

FOR RENT—2-bedroom trailer in Auxier. Call 886-1815. 1-9-2t.

TRAILER FOR RENT—Call 874-9546 after 4 p.m. Roger Webb, Gen. Del., Emma, Ky. 1-9-2t.

FOR SALE—1974 Impala station wagon. Excellent condition. Call 886-6991. 1-9-2t-pd.

COMPUTER FOR SALE—IBM 5110 Computer and Sanyo Monitor for sale, set-up and can be seen in operation at McDowell, Kentucky. If interested call Unit Coal Corporation at 606-377-2471, 8:30 - 4:30 weekdays. Approximately \$20,000. 1-9-2t.

MOVING? Let us move you. Call 358-9617. Eastern Trading Post. 1-9-tf.

FOR SALE—Four steel-belted radial tires—HR78-15's. Like new. \$106 for all. Paul Beach, phone 285-9119. 1t.

FOR SALE—UKC-registered English coonhound pups. Boyd's Little Joe Breeding. Five months old. Should be started now. Call Charles Hansford, 358-9549. 1-9-tf.

WE LEASE OR BUY coal property. Robert DeRossett, phone 886-3114. 1-9-tf.

FOR SALE—1979 4x4 Cheyenne pickup; tilt wheel, cruise control, air-conditioned, many more extras. Billy Joe Caudill, Langley, Ky., phone 285-3917 after 5 p.m. 1-9-tf.

FOR SALE—3-bedroom home on Mountain Parkway near Clark School. Out of flood area. Price \$43,000. Phone 886-8925. 1-7-2t-pd.

GRAVEL, ANY SIZE—Delivered \$9.00 ton (6-ton minimum); house coal, \$30 ton, delivered (5-ton minimum). Call anytime, 886-8050 or 886-6572. 1-9-2t-pd.

FOR RENT—Two bedroom trailer. Couples or couple with one child. Call 886-8424. 1-9-2t-pd.

New Subscription Rates Per Year

In Floyd County, \$6.75
Elsewhere in Kentucky, \$8.
Outside Kentucky, \$10.

Please note expiration date opposite your name on wrapper or on your copy of The Times. Because of increased mailing costs, notices of subscription expiration are no longer mailed to subscribers.

ACTION REALTY
886-3804
(Office)
307 Hopkins Bldg. • Pikeville, Ky.

MARE CREEK—Three-bedroom brick house. Less than four years old, with attached garage, built-in kitchen, with utility room. Nice lot. Priced at \$55,000.

INFLATION FIGHTER—\$38,000!
Country living with privacy. Approximately 15 acres. Let us show you this five-room house (aluminum siding, storm windows and doors). Nice garden, fruit trees and an abundance of pine trees. Nice front porch, storage building, and shed for firewood (already cut). Located on Caney Fork of Middle Creek. School bus goes by house to Clark school. Ten minutes to Prestonsburg. Priced at \$38,000 for quick sale.

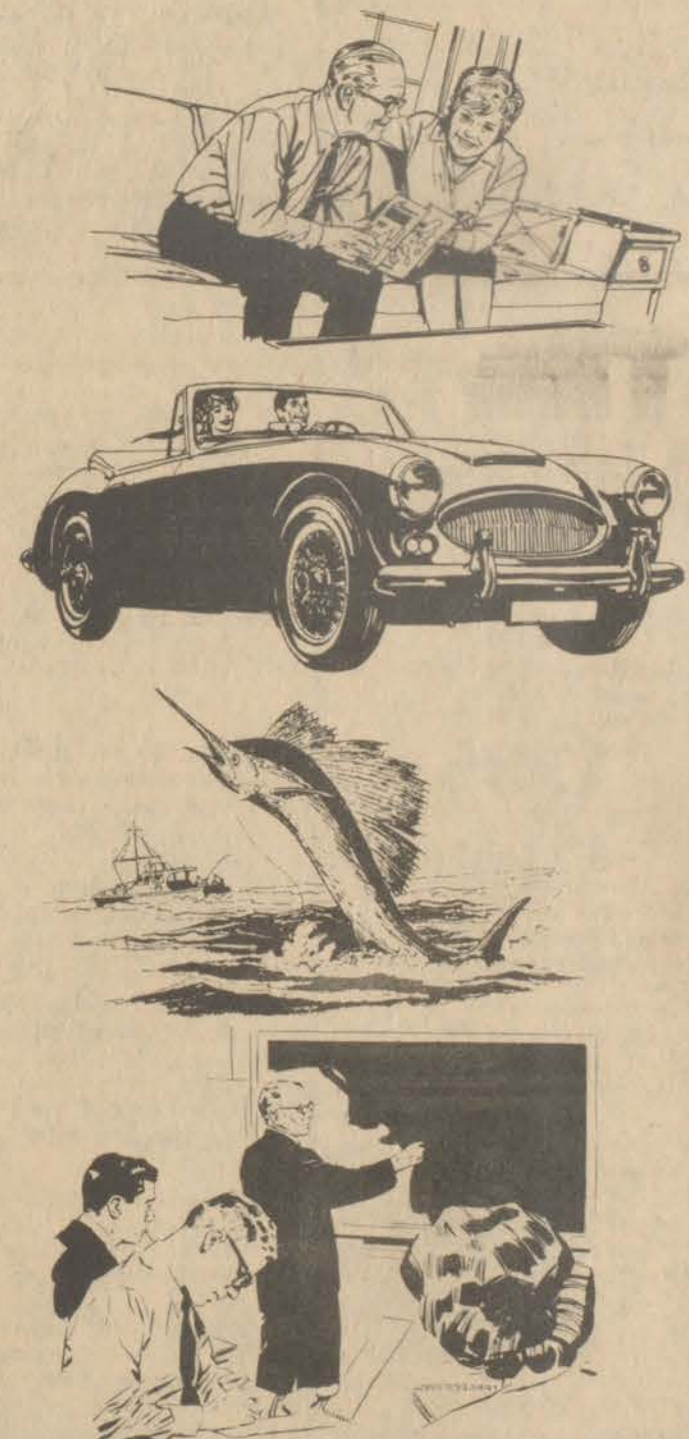
Would you like to own your own thriving business? We are offering for sale Eastern Dairy Bar and Restaurant. Also, two-bay service station. Near Allen Central high and new Route 80 at Eastern, Ky. \$68,500.

DO YOU HAVE PROPERTY FOR SALE? WE HAVE PROSPECTS FOR RESIDENTIAL AND COMMERCIAL PROPERTY IN AND AROUND PRESTONSBURG.

WE HAVE OTHER PROPERTY IN PIKE AND MARTIN COUNTIES. GIVE US A CALL!

THE ACTION TEAM
Bill Gibson, Broker — Home No. 478-9987
Emma Lou Martin, Broker-Salesperson, 874-9928
Ron Lawson, Salesman, 886-9976 7-4-tf.

Security?
Automobile?
Vacation?
Education?



Whatever your need or desire, saving is the best way to realize it.
Come in soon, let us show you how easy and fast your savings can grow.

1st FIRST NATIONAL BANK
75th ANNIVERSARY
75 Years...1904-1979
Phone 886-2321

"The Bank of Personal Service"
BURL WELLS SPURLOCK, President

Time & Temperature 886-9311

MAIN OFFICE
3 North Lake Drive
Prestonsburg

TWIN-BRIDGES BRANCH
Martin

BETSY LAYNE BRANCH
U.S. 23
Betsy Layne

NORTH LAKE DRIVE BRANCH
U.S. 23
Prestonsburg

MasterCard
VISA
FDIC

PUBLIC NOTICE

There will be a public meeting of the Floyd County T.V. Cable Commission to be held on January 11, 1980 at the hour of 5:30 p.m. in the Floyd County Courthouse Annex Conference Room. 1-2-21.

Notice of Intention To Mine

In accordance with the provisions of KRS 350.065 notice is hereby given that T. & S. Coal Co. Mine No. 11, Box 500; Teaberry, Kentucky intends to file an application for the surface disturbance mining of approximately 3.0 acres located East of Teaberry in Floyd County. The proposed operation is approximately 1 mile East of State Rt. 979's junction with Holly Bush Branch Road, and located East of Teaberry. The surface of the area to be mined is owned by: Sterling Hamilton: Surface Disturbance for Underground Mine. The application will be filed at the Bureau of Surface Mining Reclamation Enforcement Prestonsburg Area Office, South Lake Drive, Prestonsburg, Kentucky 41653.

Persons wishing to file written objections and or request a formal administrative hearing in regard to the above described surface mine should notify the Department for Natural Resources and Environmental Protection within 30 days of the date of this notice. A copy of the newspaper clipping must be attached to the written objection. The objection or request for a hearing will reference application No. 036-5053. Such objection or request must be in accordance with KRS 224.081 (2) and must be forwarded to the Director of Permits, Bureau of Surface Mining Reclamation and Enforcement Capital Plaza Tower, Frankfort, Kentucky 40601. 1-2-21.

NOTICE OF PUBLIC MEETING

A public meeting will be conducted by the Floyd County Coal Severance Economic Aid Board on January 18, 1980, at 2:00 p.m. in the Floyd County Courthouse Annex for the purpose of soliciting recommendations for capital projects. All interested persons and local public agencies may obtain project recommendation forms at the office of the County judge anytime after the first notice of public meeting is published and the time of the public meeting is held. Capital projects may be recommended from the floor of the public meeting and shall be considered by the Board.

BILL WELLS
Floyd Co. Judge-Executive
JAMES H. REED
Secretary

12-19-31.

**Junior Science Series
Airs on Educational TV**

"3-2-1 Contact" is a new series for children who are not interested in science. Using a lively magazine format, with animation, guest stars and short documentaries filmed in seventy locations across the country, "3-2-1 Contact," a daily science series from Children's Television Workshop (CTW), premieres on KET Monday, January 14 at 6 p.m.

The program's major goal is to make science and technology more inviting for the thousands of youngsters who start school with a lot of curiosity about the natural world, but who, somehow, get "turned off."
"We want to build an appetite for science, not force feed it," explains Joan Cooney, CTW president. "We want to produce what we call science readiness. Our goal is to make science more accessible to children who may presently feel it is beyond their realm," she notes.
The 65 weekday shows feature three young people who go out into the world to find out about things that interest them. Through experiences, the three young anchor hosts—Marc, Trini and Lisa—become curious about the phenomena they confront and set out to learn more about these subjects from people who work with and around them.

Marc, for example, rides a roller-coaster that hurtles through vertical loops. He begins to wonder why people don't fall out and visits a designer of rollercoasters to learn about the forces involved.

Lisa visits a glassblower and helps craft a goblet. In the process, she becomes interested in the effects of high temperatures on glass.

In the workshop set that is home base for the series' roving hosts, the ideas that link various segments of each show are developed.

At the end of each program is The Bloodhound Gang, a fictional mini-mystery in which three detectives demonstrate that astute powers of observation and logic can solve baffling crimes.

The 13-week initial season is organized by themes, many involving such natural concepts as fast and slow, hot and cold, growth and decay, food and fuel, noisy and quiet, light and dark, communication, forces and surfaces. The Friday show, will give an overview of the week's theme and will be viewed in classrooms as well as in the home.

"3-2-1 Contact" has received the recommendation of the National Education Association, whose members include some 1,800,000 classroom teachers.

Fuel Bills Help Seen this Month for Area People

Big Sandy area residents who get federal supplemental security income (SSI) payments will receive an extra \$69 early this month to help pay higher oil, coal or electric bills this winter.

The extra check is in addition to the regular monthly SSI payment, according to Jim Kelly, Social Security director for the area. Social Security administers the SSI program.

"Special energy assistance checks are being sent to SSI recipients by the Social Security Administration, however, SSI recipients and other low-income residents should contact the Bureau for Social Insurance office in the county where they live as they may be eligible for energy assistance payments that are being administered by the state," Kelly said.

The total cost of the special energy assistance payments program throughout the county, including the special checks to SSI recipients and grants to the states to help people with special emergency fuel or other energy related situations, is \$1.6 million. Of that, \$400 million is being sent to SSI recipients, \$400 million is allocated to the Community Service Administration, including \$250 million previously allocated, for the Energy Crisis Assistance Program, and \$800 million is being given the states in block grants. Kentucky's grant is \$9.6 million.

The special energy check for each SSI recipient in Kentucky will be the same. The amounts vary from state-to-state, ranging from \$34 in Hawaii to \$250 in 11 states. The individual state amounts are determined by a three-part formula which takes into account local weather conditions, the number of SSI recipients in the State and certain energy consumption statistics for the State.

"People who receive SSI will get the energy check automatically. No application or contact with the Social Security Office is necessary," Kelly said.

New Subscription Rates Per Year

In Floyd County, \$6.75
Elsewhere in Kentucky, \$8.
Outside Kentucky, \$10.

Please note expiration date opposite your name on wrapper or on your copy of The Times. Because of increased mailing costs, notices of subscription expiration are no longer mailed to subscribers.

Worldwide

MINING EQUIPMENT

USED, REBUILT AND NEW. FOR SALE OR LEASE-PURCHASE. ONE PIECE OF EQUIPMENT OR COMPLETE PACKAGE. OVER 100 MILLION DOLLARS OF EQUIPMENT AVAILABLE. ALL TYPES OF FINANCING AVAILABLE. ASK ABOUT THE U.S. GOVERNMENT LOAN GUARANTEED PROGRAMS. WE ALSO LEASE-PURCHASE CARS, FOUR-WHEEL DRIVES AND COAL TRUCKS.

COAL-SPOT or CONTRACT
• BUYING • SELLING • LEASING • MINING

WORLDWIDE MINING EQUIPMENT, Inc.
WORLDWIDE LEASING, Inc.
WORLDWIDE ENERGY, Inc.

COL. MONTGOMERY, President
Call anytime—(605) 886-8500, 886-9675, or 886-3230
P.O. Box 643 Prestonsburg, Ky. 41653

FOR THE SAKE OF AMERICA, SUPPORT COAL!

THE LIVING PLACE

RESIDENTIAL LISTINGS: CREEKSIDE COMMUNITY

A new residential community with a peaceful setting and all city conveniences

Ranch type with traditional stylings, 3 bedrooms, 2 baths, family room with fireplace, living room, dining room, completely built-in kitchen, fully carpeted with 2-car garage. **READY FOR IMMEDIATE OCCUPANCY!**

Ranch style with natural wood siding and contemporary designing, 3 bedrooms, 2 baths, family room, living room with fireplace, dining room, completely built-in kitchen, fully carpeted with 2-car garage. **READY FOR IMMEDIATE OCCUPANCY!**

Ranch style with natural wood siding and contemporary designing, 3 bedrooms, 2 baths, family room with Buck Stove, living room, dining room, completely built-in kitchen, fully carpeted with large covered patio and 2-car garage. **READY FOR IMMEDIATE OCCUPANCY!**

Building Lots—Readily available! Various sizes—all with city water. Located 3 miles up Abbott Road in Creekside Community.

LEE-WAL MANOR

A unique residential community in exclusive Mays Branch—Now developing!

Rustic contemporary 2-story house with barn board siding & brick, 3 bedrooms, 2½ baths, living room, dining room, completely built-in kitchen with GE appliances, large family room with fireplace, utility area & 2-car garage. Located on large lot in Lee-Wal Manor with complete privacy. Under construction—pick all your own colors.

Building Lots now available! All very private and secluded with terrain left as natural as possible. Some wooded lots suitable for A-Frames or Round Houses.

Watch for another new development in Mays Branch—prime lots soon to be available.

ALL BRUNCY HOMES QUALIFY FOR FLOYD COUNTY HOUSING BOND

Mortgage Money at 8.8 percent interest rate for qualified buyers

MAKE YOUR NEW HOME A BRUNCY BUILT!

Bruce Spradlin
Owner
886-3405
Day or Night

BRUNCY ENTERPRISES
PRESTONSBURG, KY.

W Wickes Lumber

BIG SAVINGS NOW!

PRICES GOOD THRU JANUARY 15TH

STOCK LUMBER

	8'	10'	12'	14'	16'
2"x4"	1.62	2.33	2.55	2.93	3.29
2"x6"	2.98	3.45	3.98	4.69	5.23
2"x8"	4.07	4.55	5.05	5.82	6.62
2"x10"	5.15	6.44	6.85	7.95	9.10

8'x7' WOOD GARAGE DOOR
• Built in 4 sturdy section from select West Coast lumber
\$149.95 Ea.
10'x7'... \$184.95 Ea.

GARAGE DOOR OPENER
• A must for security & convenience
• Our top-of-the-line model
• Handy digital controls
• Durable 1/3 H.P. motor
\$149.95 Ea.
Reg. \$169.95
SAVE \$20

SELF-SEALING ASPHALT SHINGLES
• Seal to form weathertight bond
• Protect against costly roof leaks
• White, Dark Gray, or Light Gray only
\$5.00 Bundle
3 Bundles=100 Sq. Ft.

2x4 PRE-CUT STUDS
\$1.48

CROSSBUCK STORM DOOR
• Durable white acrylic finish
• Alum construction & safety glass
• Prehung for easy installation
\$49.95 Ea.
Reg. \$59.95
SAVE \$10

STORM/SCREEN ALUM. WINDOWS
• Our finest natural alum. storm window
• Smooth operation & low maintenance
\$15.69 Ea.
Reg. \$20.95
SAVE \$5.26
Stock Sizes Only

6' ALUM. PATIO DOOR
• White or Bronze Alum. Finish
• Insulating 3/16" safety glass
• Fiberglass screen & full weatherstripping
\$160.95 Ea.
Reg. \$176.95
SAVE \$16

PANORAMIC STORM DOOR
• Shows off your entrance door
• Stylish White or Bronze finish
• Safety glass... prehung w/ hardware
\$64.95 Ea.
Reg. \$74.95
SAVE \$10

#15 ROOFING FELT .. \$9.89 400 Sq. Ft. Roll
PLASTIC ROOF CEMENT \$9.65 5 Gal

3 EASY WAYS TO CHARGE...
Use the handy Wickes National Credit Card, personalized Time Payment Plan or your own Bank Cards!

EXPERT INSTALLATION SERVICE...
Wickes provides economical installation service for many products. Ask for details at your local Center!

Just Say CHARGE IT!!

W Wickes
Lumber

VISA
Master Charge

U.S. 23 ALLEN, KY.
STORE HOURS:
MONDAY-FRIDAY, 8:00-5:00
SATURDAY, 8:00-5:00

Copyright 1978 by The Wickes Corporation

OPEN DAILY
10 TO 9
SUNDAY
1 TO 7

HECK'S

WE RESERVE THE RIGHT TO LIMIT QUANTITIES

OPEN DAILY
10 TO 9
SUNDAY
1 TO 7

PRICES IN EFFECT BEGINNING WEDNESDAY, JANUARY 9.

WINTER

Clearance

HECK'S
Lysol
120z.
DISINFECTANT
SPRAY
\$1.29
Reg. 1.99
Houseware Dept.



RIVAL
5Qt. CROCK POT
With Removable Crock
\$19.99 Reg. 27.96
Jewelry Dept.



WEN
2 SPEED JIGSAW
Multi-purpose jig saw with 2 speeds: 3000 or 2400 1/4" strokes per minute. Husky shoe plate adjusts forward, backward for different cuts. 1/4" RIP. Double insulated. Includes rip guide and three blades.
\$17.66 Reg. \$23.44



BAN
DEODORANT
REGULAR SCENT
\$1.38
Reg. 2.08
Buy 2.5 oz. Ban roll-on antiperspirant deodorant
Cosmetic Dept.



HARDWARE DEPARTMENT

	REG. PRICE	SALE PRICE
MITRE BOX	\$ 9.99	\$ 6.88
MIRACLE STRIPPER	4.99	2.77
STP GAS TREATMENT, 8-oz.	.99	.66
STP GAS TREATMENT, 12-Oz.	1.44	.88
WOOD MAULS	16.99	11.66
FELT STRIPS	.54	.33
WILD BIRD SEED	1.19	.69
B&D SANDER KIT	29.99	15.88
ELECTRIC STAPLE GUN	23.99	16.77
WEN 2 SPEED JIGSAW	23.44	17.66
ROCKET OIL	4.99	3.99
3-WAY LUG WRENCH	3.77	1.99
TORCH KIT	14.99	9.88
PRO-CUT SHAPER	8.99	6.99
WINDSHIELD WASHER	1.19	.88
SNOW SHOVEL	5.44	3.99
SNOW PUSHER	5.99	3.99

JEWELRY DEPARTMENT

SUNBEAM FRY PAN	24.96	19.99
BROIL KING HOT PLATE	6.99	4.99
G.E. 2-SLICE TOASTER	16.99	12.99
G.E. 5-SPEED DELUXE MIXER	17.99	12.99
G.E. CAN OPENER	11.96	9.99
WEAVER CHICKEN BUCKET	29.96	24.99
SK 27 G.E. FRY PAN	34.96	29.99
ELECTRIC ALARM CLOCK	4.49	2.99
G.E. TV BAND RADIO	26.88	21.99
G.E. 40-CHANNEL CB	69.96	57.99
FAST FRY Family size	21.96	15.99
110-120 KODAK FILM	1.94	1.59
LADIES' BILLFOLD	2.99	2.09
RIVAL 5-Qt. CROCK POT	27.99	19.99

TOY DEPARTMENT

TOY CHEST	17.99	12.69
SPACE SPINNER	7.99	5.69
BLACKBOARDS	7.99	5.69
CORK NOTE BOARDS	7.99	5.69
SPIDER WRITER	7.99	5.69

HOUSEWARE DEPARTMENT

	REG. PRICE	SALE PRICE
ASSORTED STORAGE	\$ 1.69	\$.99
CLEANER RACK	1.69	.99
SINK PROTECTOR	1.69	.99
DELUXE BAG HOLDER	1.69	.99
SPICE RACK	1.69	.99
PANTRY EXPANDER	1.69	.99
BAMBOO BASKETS	4.44	3.22
BASKETS	2.59	1.66
10-PK. PENCILS	.87	.49
PLANTER POLE	6.99	4.89
HECK'S DISHWASHING LIQUID	.69	.39
KEROSENE LAMP	2.29	1.69
WALDORF BATHROOM TISSUE, 4-pk	1.05	.69
KLEENEX TISSUES, 200-ct.	.75	2/1.00
NOTEBOOK PAPER, 200-ct.	.83	.59
LYSOL SPRAY, 12-oz.	1.99	1.29

COSMETICS DEPARTMENT

DURATION, 1/2-oz.	1.79	1.29
BAN ROLL-ON, 2.5-oz.	2.08	1.38
DIAL REGULAR/UNSCENTED	1.59	.99
NORFORMS	1.96	1.48
HECK'S PLASTIC STRIPS, 80's	1.27	.89
EPSOM SALT	.67	.53
HECK'S ADDED STRENGTH PAIN RELIEVER	1.18	.82
ATRA RAZOR	3.99	2.79
VICK'S VA-TRO-NOL LOZENGES	1.54	1.08

SPORTING GOODS DEPARTMENT

EVEREADY LANTERNS	3.39	1.99
WILSON BASKETBALL SHOES	12.88	7.99
TABLE TENNIS SET	13.49	9.44
FOOTBALL HELMET	6.99	4.88
ACADEMY GUN RACKS		
4 place	10.26	7.18
3 place	9.18	6.43
2 place	3.94	2.99
car or truck 2 place	3.49	2.49
O. J. SIMPSON FOOTBALL	13.99	8.88
UNIVERSITY TEE SHIRTS	4.99	2.50
ACADEMY HUNTING BOOTS	13.99	9.79
ACADEMY HAND WARMERS	1.99	1.66
ACADEMY SNOW BOOTS	27.99	18.99
CUTTERS FIRST AID KIT	5.44	3.81
GYM SHORTS	3.49	2.33
KAUFMAN ARCTIC PAC SOLE BOOTS	32.88	21.99

PLENTY OF FREE PARKING

"Heck's Makes The Difference"

ITEMS AVAILABLE AT STORES SHOWN BELOW

VISA

719 University Drive Prestonsburg, Ky.

master charge

OPEN DAILY
10 TO 9
SUNDAY
1 TO 7

HECK'S

WE RESERVE THE RIGHT TO LIMIT QUANTITIES

OPEN DAILY
10 TO 9
SUNDAY
1 TO 7

PRICES IN EFFECT WED., THROUGH TUES., JAN. 15, WHILE QUANTITIES LAST.

FALL AND WINTER CLOTHING Clearance

30% OFF HECK'S REG. PRICE

**BLUETAG
ITEMS ONLY**

- SWEATERS
- COATS. HATS
- JACKETS
- GLOVES

AND
MUCH, MUCH, MORE!



PLENTY OF FREE PARKING

"Heck's Makes The Difference"

ITEMS AVAILABLE AT STORES SHOWN BELOW

719 University Drive Prestonsburg, Ky.



Issues Of The 80's: Inflation Why Does Everything Cost So Much?

There is only one true cause of inflation: expansion of the money supply to cover overspending by federal government.

Since the federal government is the only one licensed to print money, it alone must take the blame for inflating the dollar. This hidden tax allows government to pay for programs without the unpopular action of raised taxes.

Inflation has caused a relentless increase in the purchase price of everything we buy. It strips away our savings, causes us to lose money while we are hanging on to it, and makes it impossible for retired people on fixed incomes to maintain a fixed standard of living.

At a monthly increase of 1.1%, a car currently selling for \$5,000 will cost \$10,000 by 1984, \$20,000 by 1990, \$80,000 by 2001, and \$320,000 by the year 2011. A \$50,000 home by the year 2011 will cost \$3.2 million at the present rate of inflation. Remember, 2011 is only 31 years away!

In all honesty, we don't really expect inflation to rise at a rate of 13% for the next thirty years, but even if it is held to 7.2%, a \$5,000 car will cost \$40,000 thirty-one years from today! These figures do not represent deliberate price increases by the manufacturer. They merely reflect inflated currency.

Those involved in the government spending/printing pattern have been pointing the finger of accusation at American business. They have succeeded so well that industry finds itself admitting fault for inflation and apologizing for something it is incapable of causing. This shows an appalling lack of economic education among those involved in the free market system.

Business can raise prices with or without a reason. That's a price increase. That is not inflation. Business can gouge the consumer. That's still not inflation—that's price gouging. There's a difference.

The most recent suspects under scrutiny today in our national search for an inflation culprit are the big oil companies. Though oil prices are rising at a dramatic rate, the causes for the increase are lifting of controls, increased costs of labor and technology, intentional price increases by OPEC, inflation, and dramatic increases in the cost of exploration and extraction.

Though oil price increases reflect rising inflation, they by no means cause it. West Germany imports more oil than the United States and West German inflation is half of ours. Switzerland imports all of its oil. There is no inflation in Switzerland.

There can be no doubt that the root cause of inflation is a political problem. Its solution lies in political action.

Japan began inflating its money supply in early 1970 and noted a rapid increase in all prices. By 1974, prices had increased 24 percent. Japan did what needed to be done politically. It stopped creating money and reduced money growth to ten percent. Prices have been dropping in Japan ever since. It should also be noted that Japan imports virtually all of its oil supply.

As inflation raises market prices, labor responds predictably, demanding higher wages to meet the increased cost of living.

Inflation makes investment unprofitable. Rather than nest eggs set aside for security, Americans have adopted a "buy now" attitude, because waiting will only mean paying more for the same item several months hence. Americans also, at the urging of banks and lending institutions, are attempting to cope with increasing prices by extending their personal indebtedness well beyond financial good sense.

Government has tried to control inflation by imposing price controls. When these controls are lifted and artificially low prices suddenly spurt upward to reach appropriate levels, government moves to tax the windfall that industry has done nothing to deserve. Government benefits, inflation remains unchecked and the consumer pays.

Unchecked inflation has us teetering on the brink of inevitable recession. Whether our politicians will recognize the cause and have the personal fortitude to do what needs to be done depends to some extent on an informed electorate. Consumer/voters, unlike those they elect to serve, have nothing to gain and everything to lose from an unchecked money supply. Without unpopular but necessary bite-the-bullet political action, it will be the American consumer/voter who will pay the high price of deep depression.

This statement was prepared by Consumer Alert, Inc., a non-profit organization.

Poll after poll shows consumers identify inflation as Public Enemy No. 1. Consumers are worried as they see their incomes stretched tighter and tighter to pay for items that cost more than last year but are sure to be even more expensive next year.

While the effects of inflation are painfully obvious every time we enter a store, its causes seem mysterious and elusive. When we describe what is happening by saying, "prices are rising" or "the dollar fell today" or "market forces fuel inflation," we are acquiescing to the so-called inevitability of inflation; but inflation is not a force working all on its own.

Prices rise because corporations raise them; the dollar drops because big banks and traders speculate against it. Market forces cover the gamut of inflationary practices, from corporations' anti-competitive activities to massive spending by the federal government to heavy buying by consumers who have no incentive to save for a future in which their money will buy even less than it buys today.

The activities of corporations, government, and consumers must be examined if we are to understand who is causing inflation and how we can halt or significantly slow its accelerating spiral. Corporations fuel inflation by imposing unnecessary price hikes. For example, in 1973 when devaluation of the dollar drove up the price of small, fuel efficient Japanese cars, American small car manufacturers simply followed suit by raising their prices to the same levels. They charged as much as they could get, rather than inject real competition into the system.

Unnecessary price hikes are common, especially in markets dominated by a few giant corporations. Mobil Oil Corporation, Standard Oil, Shell, and six other oil giants were accused recently of overcharging customers nearly \$1.2 billion between 1973-76. The Department of Energy charged the companies with violating complex regulations to increase their income.

Theoretically, the free market corrects such abuses through competition, but competition is becoming increasingly rare as large corporations buy up or drive out competitors, giving themselves greater control in a product area. Many have expanded their power by taking over successful corporations in unrelated fields. Greyhound, for example, now owns Armour-Swift, and Nestle owns Stouffer Hotels. The list goes on.

Government, too, is a leader in fueling inflation. By providing tax deductions for interest payments, federal and some state tax laws encourage sellers of major credit items to raise their prices. These laws make it reasonable for someone selling a house, for example, to charge more. After all, the buyer can always get a tax break.

Expensive federal programs which expand the money supply also push up prices. Federal spending, which has increased steadily over the past 40 years, is now an integral part of the economy. "Governmental capitalism" as economist Robert L. Heilbroner calls it, cushions the economy from potentially devastating disruptions such as the 1973 oil embargo and the imminent collapse of Chrysler.

Government spending's cushioning effect on the economy with its attendant inflation has fundamentally reshaped consumer attitudes. Consumers expect prices to rise—and to go on rising. With prices sure to be higher next year and still higher the year after that, consumers are encouraged to buy sooner rather than later, even if it means going into debt.

Consumers accumulated a record \$4.45 billion in new debt in September 1979. By unloading more dollars in the marketplace before they are worth even less, consumers hedge against inflation. They also help to further inflate the economy.

What is to be done about inflation which is predicted to reach almost 13% for 1979? Consumers can help put a damper on prices by spending more cautiously.

Structural changes are also needed. Wage and price controls are inevitable, according to Gar Alperovitz, co-director of the National Center for Economic Alternatives. The controls must be developed in a progressive fashion, he says, so that working people are not forced to pay the costs of general mismanagement. Tax loopholes must also be closed, he says, to tax wealth and capture windfall profits.

While it is a distressingly complex problem, inflation can be managed if we as consumers are committed to grappling with it, rather than resigning ourselves to its inevitability.

This statement was prepared by the National Consumers League, a non-profit organization.

THE FIRST ASSEMBLY OF GOD
(Charismatic)
West Prestonsburg, Ky.

Sunday School 9:45
Morning Worship 11:00 a.m.
Christ Ambassador 6:00 p.m.
Evening Worship 7:00 p.m.
Wednesday
Prayer Services 7:00 p.m.

"The church where miracles are happening."
REV. HENRY HAROLD WRIGHT,
Pastor Phone 9882

You Are Invited
To the
FIRST PRESBYTERIAN CHURCH
North Lake Drive
Prestonsburg

Church School 10:00 a.m.
Morning Worship 11:15 a.m.

REV. TIMOTHY D. JESSEN,
Pastor

FIRST CHRISTIAN CHURCH
John 3:17
429 N. Arnold Ave.

SUNDAY SERVICES
10:00 a.m.—Children's Church
Nursery—Grade 6
Sunday School
Grade 7—Adult
11:00 a.m.—Worship
6:00 p.m.—Evening Worship
WEDNESDAY
7:00 p.m.—Bible Study
EVERYONE WELCOME
9-19-79

**Highland Avenue
Freewill Baptist Church**

SUNDAY
Sunday School ----- 10 a.m.
Worship Service ----- 11 a.m.
Evening Service ----- 6 p.m.
WEDNESDAY
Prayer Meeting ----- 7 p.m.
CLIFFORD H. AUSTIN, Pastor

FIRST BAPTIST CHURCH
McDowell, Ky.

Sunday School ----- 10 a.m.
Morning Worship ----- 11 a.m.
Wednesday
Prayer Meeting ----- 7 p.m.
Paul Grainger, Pastor
Everyone Welcome 6-6-79

WATER GAP FREE WILL BAPTIST CHURCH
Located on
Lancer-Water Gap Road
Paul E. Daniels, Pastor

Sunday School ----- 10 a.m.
Morning Worship ----- 11 a.m.
Evening Worship ----- 6 p.m.
Wednesday Service ----- 7 p.m.

The Church with a Big Heart and a Warm Welcome. 12-5-79

The First Church of God
University Dr., Prestonsburg, Ky.

Rev. Dewey E. Music, Pastor

SUNDAY:
Sunday School ----- 9:45 a.m.
Morning Worship ----- 10:45 a.m.
Evening Service ----- 6:00 p.m.
TUESDAY:
Prayer Encounter ----- 7:00 a.m.
WEDNESDAY:
Prayer Service ----- 7:00 p.m.
EVERYONE WELCOME.
4-4-79

W.O.W.K.
TV Ch. No. 13
Sunday, 7:30 A.M.
"Bible Answers".
PRESTONSBURG
CHURCH OF CHRIST
(Vocal Music Only)
South Lake Drive
Sun., 10 a.m.-6 p.m.; Wed., 7 p.m.
Bro. BENNIE BLANKENSHIP
Evangelist
Phone 886-3379
W.D.O.C. AM, Mon.-Fri., 9:30 a.m.

COMMUNITY UNITED METHODIST CHURCH
REV. TAYLOR L. BIGGS, pastor

Sunday—
Sunday School 10 a.m.
Morning Worship 11 a.m.
Evening Worship 7 p.m.
Wednesday—
Evening Worship 7 p.m.
EVERYONE WELCOME
10-18-79

FIRST ASSEMBLY OF GOD

Lorie Vannucci, Pastor
Phone 285-3051
Martin, Ky.

Sunday School ----- 10 a.m.
Morning Worship ----- 11 a.m.
Youth Service ----- 6 p.m.
Evangelistic Service ----- 7 p.m.
Wednesday, 7 p.m. — Family Night

Missionettes For Girls,
Royal Rangers For Boys

Special Speaker:
Loren Kohl
Sun., Jan. 13

For transportation call
285-3051 or 285-9114.
EVERYONE WELCOME.

THE BAPTIST DAY CARE CENTER
of
**THE FIRST BAPTIST CHURCH
IRENE COLE MEMORIAL**

CALL 886-8681
for more information.

announces expansion of services with enrollment NOW OPEN for First Graders for after school on our Half Day Program, and for children 3-7 years of age who are potty trained for either our Full Day or Half Day Program. The number we can enroll is very limited, and will be done on a first come first enrolled basis. (Now accepting applications for teaching positions.)

LOOKING FOR SOMETHING DIFFERENT?
Attend Services At The
FIRST CHURCH OF GOD
(Little Paint) 1/2 mile off Route 1428
Between Prestonsburg & East Point, Where

"THE DIFFERENCE IS WORTH THE DISTANCE"

SUNDAY SCHOOL 10:00 a.m.
MORNING WORSHIP 11:00 a.m.
YOUTH SERVICE 6:00 p.m.
REVIVAL HOUR 6:30 p.m.
BIBLE STUDY (WED.) 7:00 p.m.
(NURSERY PROVIDED)
PHONE 886-3319

ROY L. TINCHER, Pastor
"No Creed but Christ, No Law but Love, No Book but the Bible"

**THE FIRST BAPTIST CHURCH
IRENE COLE MEMORIAL**

ANNUAL JANUARY BIBLE STUDY
EPHESIANS: God's New People
ENTIRE MONTH OF JANUARY
THIS SUNDAY
"THE CHURCH"

BIBLE STUDY 9:45 AM
MORNING WORSHIP 10:30 AM
EVENING WORSHIP 7:30 PM
MIDWEEK PRAYER SERVICE 6:45 PM

DEAN L. PARK, PASTOR
CLIFF RYAN, MIN. ED.
& YOUTH
GUS KALOS, MIN. SERV.

First Avenue, Downtown Prestonsburg
NURSERY PROVIDED AND PLENTY OF PARKING

Federal Reserve 'Losing Banks

The First National Bank of Prestonsburg is only one of 575 banking institutions over the U.S. that have withdrawn or are considering withdrawal from the Federal Reserve System to become state-chartered banks.

The Chicago Tribune reports that Federal Reserve faces a major dropout problem by member banks that could severely hamper its ability to control monetary policy.

Federal Reserve chairman Paul A. Volcker said recently that as many as 575 member banks with deposits of nearly \$70 billion may withdraw from the Federal Reserve system unless Congress passes legislation easing the financial burden of membership.

Nationwide, there are 5,483 banks with deposits totaling \$721 billion in the Federal Reserve System.

Congress is considering legislation to ease the terms of membership, primarily by reducing the amount of reserves that member banks must keep on deposit with the system.

In a letter to House Banking Committee chairman Henry Reuss, D-Wis., Volcker said a substantial loss of members would have the "serious and insidious" result of undermining the Federal Reserve Board's control over the nation's money supply.

If Congress fails to act, he said, the system faces the relatively certain loss of 273 banks and the possible loss of another 301 banks.

The Fed controls the nation's money supply through a number of techniques, including adjusting the size of required reserves and by setting the price at which member banks may borrow from the system.

A Fed official in Chicago, the largest of the system's 12 regions in bank numbers, said as many as 69 of the 902 member banks in the five-state region have indicated they may withdraw from the system. Of those, 11 are in the process already, he said.

For safer holiday driving, allow an hour for each ounce of alcohol consumed before getting behind the wheel, advised the Kentucky Alcoholism Council.

Way of the Cross Outreach

MONDAY—
Interdenominational
Prayer Meeting,
7:30 p.m.

LIFELINE—
Call 886-8727 or 886-9595
and for further information.

You have a Special Invitation
To Worship With Us at the
BONANZA FREE WILL BAPTIST CHURCH
(Abbott Road)

Sunday School ----- 10:00 a.m.
Morning Worship ----- 11:00 a.m.
Evening Service ----- 6:00 p.m.
Prayer and Bible Study 7:00 p.m.
(each Wed.)

You may also hear the pastor over WDOC each Tuesday from 9:45 to 10 a.m., 1310 AM on your radio deal. Please tune in.

LEE CAUDILL, Pastor
REECE RAY, Asst. Pastor

DRIFT PRESBYTERIAN CHURCH

SUNDAY
WORSHIP SERVICE
9:30 A.M.
REV. TIMOTHY D. JESSEN, Pastor

A Special Tribute, Expertly Designed

Let the memory of a loved one live on through a personalized memorial...A wide selection including a double mausoleum, in either granite or Southern Georgia marble, is available.

DAVIDSON MEMORIAL GARDENS and MONUMENTS

LARRY LEEDY, MGR. IVEL, KY. Phone 874-2551
874-9868

TV Schedule

The Floyd County Times

TV Schedule

Wednesday, January 9, 1980 - Tuesday, January 15, 1980

wednesday

WEDNESDAY
JAN. 9, 1979

EVENING

- 6:00 (2) (3) (3) (4) (6) (8) (13) (57)
NEWS
(5) (11) (22) (33) ZOOM
(17) CAROL BURNETT AND FRIENDS
- 6:30 (2) (3) (3) (57) NBC NEWS
(4) (13) ABC NEWS
(5) (22) ART OF BEING HUMAN
(6) (7) (8) (27) CBS NEWS
(11) (33) WILD WILD WORLD OF ANIMALS
(17) BOB NEWHART SHOW
(2) (57) ARTHUR SMITH SHOW
(3) (3) CROSS WITS
(4) (13) THREE'S A CROWD
(5) (11) (22) (33) MACNEIL-LEHRER REPORT
(6) (8) TIC TAC DOUGH
(7) (27) PM MAGAZINE
(17) SANFORD AND SON
- 7:30 (2) (57) GOSPEL TIME
(3) (3) COUNTRY ROADS
(4) (13) DATING GAME
(5) (22) 1980 KENTUCKY GENERAL ASSEMBLY
(6) (8) JOKER'S WILD
(7) (27) M.A.S.H.
(11) (33) DICK CAVETT SHOW
Guest: Antonia Fraser, author.
(17) ALL IN THE FAMILY
- 8:00 (2) (3) (3) (57) REAL PEOPLE
Camel races, a human drum, and a popular nightclub where female impersonators entertain are among the features on Real People. (60 mins.)
(4) (13) EIGHT IS ENOUGH
When Tommy's band is beaten out by an all-girl rock group to play for the senior prom, the guys plan a counterattack by nominating Tommy for prom queen. (60 mins.)
(6) (7) (8) (27) YOUNG MAVERICK Ben Maverick is hired by a railroad tycoon to be the one-man Missouri and Southern Railroad poker team, and his first and only match is to be against an 80-year-old Indian chief. (60 mins.)
(11) (33) GREAT PERFORMANCES 'Moliere' Part I. Ariane Mnouchkine's epic traces the life and times of the great French playwright, from the free-wheeling spirit of the traveling troupe to the splendor of the court of Louis XIV. (60 mins.)
(12) (13) MOVIE -(ROMANCE) ** 1/2 "Saturday Night Fever" 1978 John Travolta, Karen Gorney. A paint store employee by day becomes king of the disco by night. (Rated PG) (2 hrs.)
(17) MOVIE -(DRAMA) *** "Sands of Iwo Jima" 1949 John Wayne, John Agar. Tough U.S. Marine sergeant trains a squad of rebellious recruits in New Zealand, resulting in the capture of Iwo Jima. (2 hrs., 15 mins.)
- 8:30 (5) (22) DICK CAVETT SHOW
Guest: Antonia Fraser, author.
- 9:00 (2) (3) (3) (57) DIFF'RENT STROKES Drummond decides to run for a city office, ignoring a sly politician's scheme to use his black sons and elderly new housekeeper to get votes.
(4) (13) CHARLIE'S ANGELS Kelly and a teenager are taken as hostages by desperate hoodlums who have killed a cop and want to get to the partner of the slain officer before he exacts revenge. (60 mins.)
(5) (22) GREAT PERFORMANCES 'Moliere' Part I. Ariane Mnouchkine's epic traces the life and times of the great French playwright, from the free-wheeling spirit of the traveling troupe to the splendor of the court of Louis XIV. (60 mins.)
(6) (7) (8) (27) SEIZURE: THE STORY OF KATHY MORRIS A

dramatic special based on the true story of a young singer's brush with death following brain surgery and the life affirming statement her miraculous struggle to recover makes to her brash, brilliant neurosurgeon about the powers of the human spirit. Stars: Leonard Nimoy, Penelope Millford. (2 hrs.)
(11) (33) STATE OF THE STATE ADDRESS
(2) (3) (3) (57) LIVE FROM STUDIO 8-H Zubin Mehta, Leontyne Price and Itzhak Perlman will perform with the New York Philharmonic Orchestra in a tribute to the late Arturo Toscanini, who led the NBC Symphony Orchestra. (90 mins.)
(4) (13) VEGAS A beautiful hypnotist programs Binzer to blow up a reporter and a college basketball star as part of a plot to fix a big game. (60 mins.)
(5) (11) (22) (33) THE LATHE OF HEAVEN This is a film adaptation of Ursula K. Le Guin's best-selling science fiction novel. Bruce Davidson stars as a man whose terrifying dreams literally come true. (2 hrs.)
(17) UPSTAIRS, DOWNSTAIRS 'Out of the Everywhere'
(2) (3) (3) (8) (7) (8) (27) (57) NEWS
(4) (13) SCENE TONIGHT
(2) (3) (3) (57) THE TONIGHT SHOW Host: Johnny Carson. (90 mins.)
(4) (13) PTL CLUB-TALK AND VARIETY
(6) (7) (8) (27) YOUR TURN: LETTERS TO CBS NEWS
(17) MOVIE -(WESTERN-DRAMA) *** "Two Rode Together" 1961 James Stewart, Richard Widmark. A Texas Marshall and a cavalry lieutenant lead a wagon train into Comanche territory to rescue captives of the Indians. (2 hrs., 20 mins.)
(7) (27) CBS LATE MOVIE 'MARY HARTMAN, MARY HARTMAN' Mary Hartman comes face-to-face with the Fernwood Flasher. (Repeat) 'THE POSSESSED' 1977 Stars: James Farentino, Joan Hackett.
1:00 (3) (3) TOMORROW Host: Tom Snyder. Guest: Joan Fontaine. (60 mins.)

thursday

THURSDAY
JAN. 10, 1979

EVENING

- 6:00 (2) (3) (3) (4) (6) (8) (13) (57)
NEWS
(5) (22) ZOOM
(11) (33) ZOOM
(17) CAROL BURNETT AND FRIENDS
- 6:30 (2) (3) (3) (57) NBC NEWS
(4) (13) ABC NEWS
(5) (22) G.E.D.
(6) (7) (8) (27) CBS NEWS
(11) (33) WILD WILD WORLD OF ANIMALS
(17) BOB NEWHART SHOW
(2) (57) WRESTLING
(3) (3) CROSS WITS
(4) (13) THREE'S A CROWD
(5) (11) (22) (33) MACNEIL-LEHRER REPORT
(6) (8) TIC TAC DOUGH
(7) (27) PM MAGAZINE
(17) SANFORD AND SON
- 7:30 (3) (3) HOLLYWOOD SQUARES
(4) (13) DATING GAME
(5) (22) 1980 KENTUCKY GENERAL ASSEMBLY
(6) (8) JOKER'S WILD
(7) (27) M.A.S.H.
(11) (33) DICK CAVETT SHOW
Guest: Leo Castelli, Pop Art dealer.
(17) ALL IN THE FAMILY
(2) (3) (3) (57) BUCK ROGERS IN THE 25th CENTURY Buck

works fast to prevent a man with strange powers from killing Dr. Huer by turning him into a marble statue. (60 mins.)
(4) (13) MORK AND MINDY
(6) (7) (8) (27) THE WALTONS Sex education stirs controversy on Walton's Mountain when an eccentric teacher introduces the subject to her class. (60 mins.)
(11) (33) CAMERA THREE 'One Hundred Years From Today' This program is a portrait of octogenarian blues singer Alberta Hunter, who in 1954 interrupted her singing career to become a full-time nurse.
(12) (13) MOVIE -(DRAMA) *** 1/2 "Comes A Horseman" James Caan, Jane Fonda. She was as strong as the land for which she fought. And as vulnerable. He comes home to a war for the woman and the land he loves. (Rated PG) (2 hrs.)
(17) CIVILISATION (FINAL EPISODE) 'Heroic Materialism'
(4) (13) BENSON Benson and his beleaguered staff face a problem when an ambitious Lt. Governor takes over for an ailing Governor Gatling.
(5) (22) DICK CAVETT SHOW
Guest: Leo Castelli, Pop Art dealer.
(11) (33) SPORTS CLOSE-UP
(2) (3) (3) (57) QUINCY Quincy is determined to stop the abuse of the elderly by their children who are trying to get control of their parents' social security checks. (60 mins.)
(4) (13) BARNEY MILLER Wojo and Dietrich enter into an outrageous competition when a pretty young woman—who wants a volunteer to father her child—starts comparing the officers' most desirable qualities. (Pt. I. of a two-part episode)
(5) (11) (22) (33) SNEAK PREVIEWS TAKE II
(6) (7) (8) (27) BARNABY JONES J.R.'s friend and fellow law student flees the scene of a murder because he fears of being accused of the crime because he's black. (60 mins.)
(17) COLLEGE BASKETBALL Maryland Terrapins vs North Carolina State Wolf Pack
9:30 (4) (13) SOAP Burt realizes Mary doesn't know he's dying and Mary worries the baby she's expecting may have been fathered by the alien.
(5) (22) CAMERA THREE 'The Family: Scenes From British Working Class Life' Part I. This program examines the making of 'The Family', a 12 part BBC series. In this segment, the process of selecting the family and their reasons for participating in the series are discussed. (60 mins.)
(11) (33) DANCING DISCO
(2) (3) (3) (57) THE ROCK-FORD FILES When Jim reluctantly agrees to act as proxy for his friend, a small-town councilman, he is caught between two sinister factions vying for control of the city for gambling and land development. (60 mins.)
(4) (13) 20-20
(5) (11) (22) (33) SOUNDSTAGE
(6) (7) (8) (27) KNOTS LANDING Karen's involvement in a school board election leads her by stages into a re-evaluation of herself and her marriage. (60 mins.)
11:00 (2) (3) (3) (6) (7) (8) (27) (57) NEWS
(4) (13) SCENE TONIGHT
(11) (33) FALL AND RISE OF REGINALD PERRIN
(17) LAST OF THE WILD
(2) (3) (3) (57) THE TONIGHT SHOW Host: Johnny Carson. (90 mins.)
(4) (13) PTL CLUB-TALK AND VARIETY
(5) (7) (8) (27) CBS LATE MOVIE 'COLUMBO: Forgotten Lady' An aging movie star who was forced into retirement now

wants to make a comeback. (Repeat) 'BLACK SHEEP SQUADRON: Five The Hard Way' Stars: Robert Conrad, Red West. (Repeat)
(11) (33) ABC CAPTIONED NEWS
(17) MOVIE -(COMEDY) *** "No Time For Comedy" 1940 James Stewart, Rosalind Russell. A small-town playwright has play done on Broadway; he falls in love with the play's star. (2 hrs.)
1:00 (3) (3) TOMORROW Host: Tom Snyder. Guest: Linda Lovelace. (60 mins.)

friday

FRIDAY
JAN. 11, 1979

EVENING

- 6:00 (2) (3) (3) (4) (6) (8) (13) (57)
NEWS
(5) (11) (22) (33) ZOOM
(17) CAROL BURNETT AND FRIENDS
- 6:30 (2) (3) (3) (57) NBC NEWS
(4) (13) ABC NEWS
(5) (22) FOOTSTEPS
(6) (7) (8) (27) CBS NEWS
(11) (33) WILD WILD WORLD OF ANIMALS
(17) BOB NEWHART SHOW
(2) (57) GOINS BROTHERS
(3) (3) CROSS WITS
(4) (13) THREE'S A CROWD
(5) (11) (22) (33) MACNEIL-LEHRER REPORT
(6) (8) TIC TAC DOUGH
(7) (27) PM MAGAZINE
(17) SANFORD AND SON
- 7:30 (2) (57) HILLS'N HOLLOWES
(3) (3) PRICE IS RIGHT
(4) (13) DATING GAME
(5) (22) COMMENT ON KENTUCKY
(6) (8) JOKER'S WILD
(7) (27) M.A.S.H.
(11) (33) DICK CAVETT SHOW
Guest: Norman Cousins.
(17) BASKETBALL Atlanta Hawks vs Boston Celtics
(2) (3) (3) (57) SHIRLEY Shirley discovers that her younger son Hemm is unknowingly turning to a life of crime. (60 mins.)
(4) (13) THE B.A.D. CATS Samantha poses as a lady of the evening as part of Nick's plan to trap a cop who is assaulting prostitutes. (60 mins.)
(5) (22) 1980 KENTUCKY GENERAL ASSEMBLY
(6) (7) (8) (27) THE INCREDIBLE HULK Jack McGee's obsession with finding the Hulk gets a severe setback when his new publisher forbids him to go on with the search. (60 mins.)
(11) (33) WASHINGTON WEEK IN REVIEW
(12) (13) MOVIE -(ROMANCE-COMEDY) ** "A Little Romance" Laurence Olivier, Sally Kellerman. A romantic comedy filmed in Paris. (Rated PG) (2 hrs.)
- 8:30 (5) (11) (22) (33) WALL STREET WEEK 'Happy New Year' Part II. Guest: Arnold Bernhard, Resiarch Chairman, Valve Line Investment Survey.
- 9:00 (2) (3) (3) (57) FRIDAY NIGHT AT THE MOVIES 'Two Minute Warning' 1976 Stars: David Janssen, Charlton Heston. To divert attention from their planned multi-million dollar art heist, the thieves plant a sniper in the sold out crowd at the Los Angeles Coliseum to create panic at a critical point in the game. (2 hrs.)
(4) (13) FRIDAY NIGHT MOVIE 'Make Me An Offer' 1979 Stars: Susan Blakely, Patrick O'Neal. A young woman in the real estate business gets no satisfaction from a good sale since she knows all too well that her boss is only using her youth and beauty as a lure for customers. (2 hrs.)
(5) (22) FREE TO CHOOSE 'Power of the Market' Dr. Milton Friedman, 1978 Nobel

Laureate in Economics, examines the economic problems facing the U.S. today. Tonight, Dr. Friedman explains how a free market works. (60 mins.)
(6) (7) (8) (27) THE DUKES OF HAZZARD The Duke clan helps a young woman reach the arms of the man she loves in spite of the efforts of her father to stop the wedding. (60 mins.)
(11) (33) WISE PARENTS KNOW THEIR CHILDREN
(17) PERSPECTIVE ON GREATNESS 'Charles A. Lindbergh--the Crowded Idol'
10:00 (5) (22) MARKET TO MARKET
(6) (7) (8) (27) DALLAS After Cliff Barnes announces he is quitting in his race for Congress, Digger returns to the bottle and drunkenly tells a reporter that Cliff is really the father of Sue Ellen's baby. (60 mins.)
(11) (33) DAVID SUSSKIND
10:30 (5) (22) WASHINGTON WEEK IN REVIEW
10:45 (17) LOVE AMERICAN STYLE
11:00 (2) (3) (3) (6) (7) (8) (27) (57) NEWS
(4) (13) SCENE TONIGHT
(11) (33) MONTY PYTHON'S FLYING CIRCUS
(17) LAST OF THE WILD
11:30 (2) (3) (3) (57) THE TONIGHT SHOW Host: Johnny Carson. (90 mins.)
(4) (13) PTL CLUB
(6) (8) THRILLER
(7) (27) MOVIE -(DRAMA) ** 1/2 "Doctor's Wives" 1971 Dyan Cannon, Gene Hackman. A woman having an affair with several doctors is mysteriously murdered. (2 hrs.)
(11) (33) ABC CAPTIONED NEWS
(17) MOVIE -(HORROR) ** "Frankenstein Must be Destroyed" 1969 Peter Cushing, Simon Ward. Dr. Frankenstein is now experimenting with brain transplants. (2 hrs., 5 mins.)
1:00 (3) (3) THE MIDNIGHT SPECIAL

saturday

SATURDAY
JAN. 12, 1979

MORNING

- 5:45 (17) WORLD AT LARGE
- 6:00 (17) HUMAN DIMENSION
- 6:30 (3) (3) SATURDAY REPORT
(6) (8) TV CLASSROOM
(17) IT'S YOUR BUSINESS
- 6:48 (4) (13) FARM DIGEST
- 6:55 (4) (13) NEWS
- 7:00 (3) (3) BIG BLUE MARBLE
(4) (13) KIDS ARE PEOPLE TOO
(6) (8) PORKY AND FRIENDS
(7) (27) MOVIE -(TITLE UNANNOUNCED)
(17) THREE STOOGES-LITTLE RASCALS
- 7:30 (3) (3) LITTLE RASCALS
- 8:00 (2) (3) (3) (57) GODZILLA-GLOBETROTTERS ADVENTURE HOUR
(4) (13) WORLD'S GREATEST SUPERFRIENDS
(6) (7) (8) (27) MIGHTY MOUSE-HECKLE AND JECKLE
(11) (33) SESAME STREET
(17) ULTRAMAN
- 8:26 (6) (8) IN THE NEWS
- 8:30 (17) PARTRIDGE FAMILY
- 8:55 (4) (13) SCHOOLHOUSE ROCK
- 8:56 (6) (8) IN THE NEWS
- 9:00 (2) (3) (3) (57) FRED AND BARNEY MEET THE SHMOO
(4) (13) PLASTICMAN COMEDY-ADVENTURE SHOW
(6) (8) BUGS BUNNY-ROAD RUNNER SHOW
(7) (27) BUGS BUNNY AND ROAD RUNNER
(11) (33) MOVIE -(COMEDY)

"Kid Brother" Harold Lloyd. The gentle son of a country sheriff lets a medicine show set up in his hometown, and then falls in love with its star. (90 mins.)

9:26 **6 8** IN THE NEWS
 9:56 **6 8** IN THE NEWS
 10:00 **17** MOVIE -(SPECTACULAR) **½ "Egyptian" 1954 Edmund Purdom, Jean Simmons. Egyptian Pharaoh fights against traditional priests. (3 hrs.)

10:25 **4 13** SCHOOLHOUSE ROCK
2 3 3 57 DAFFY DUCK SHOW
4 13 SCOOBY AND SCRAPPY DOO
6 7 8 27 POPEYE HOUR
11 33 WODEHOUSE PLAYHOUSE

10:55 **4 13** SCHOOLHOUSE ROCK
 11:00 **2 57** PTL CLUB-TALK AND VARIETY
3 3 CASPER AND THE ANGELS
11 33 NATIONAL GEOGRAPHIC 'Dive to the Edge of Creation' Dr. R. Ballard and biologist Dr. J.F. Grassle lead an expedition 1.5 miles beneath the ocean surface off the Galapagos Islands, where exotic forms of sea life flourish. (60 mins.)

11:25 **4 13** SCHOOLHOUSE ROCK
6 8 IN THE NEWS
 11:30 **3 3** JETSONS
4 13 SPIDERWOMAN
6 7 8 27 FAT ALBERT SHOW
 11:55 **4 13** DEAR ALEX AND ANNIE
 11:56 **6 8** IN THE NEWS

AFTERNOON

12:00 **2 57** WRESTLING
3 3 HOT HERO SANDWICH
4 13 WEEKEND SPECIAL 'The Girl With ESP' Laura Hoffman discovers that she has extrasensory perception and envisions the disappearance of her younger brother.
6 8 JASON OF STAR COMMAND
7 27 SHAZAM!
11 33 SNEAK PREVIEWS Hosts Gene Siskel and Roger Ebert tell what to see and what to avoid at the movies.

12:30 **4 13** AMERICAN BANDSTAND
5 22 NEW SHAPES: EDUCATION
6 7 8 27 30 MINUTES
11 33 MARKET TO MARKET

1:00 **2 57** OLYMPIC DIARY Coverage of the Muhammad Ali track meet from San Diego, California, and of the Olympic trials in ski jumping and speed skating from Lake Placid. (60 mins.)
3 3 MARSHALL BASKETBALL
5 22 G.E.D.
6 7 8 27 SPORTS SPECTACULAR 1) Senior Bowl. 2) Leon Spinks vs Alfredo Evangelista in a 10-round heavyweight fight. 3) Motorcycle Jump Challenge Match from Washington. (3 hrs., 30 mins.)
11 33 WEST VIRGINIA OUTDOORS
17 LAST OF THE WILD

1:30 **3 3** COLLEGE BASKETBALL Syracuse vs Old Dominion
4 13 CHAMPIONSHIP WRESTLING
5 22 G.E.D.
11 33 OLD HOUSEWORKS
17 HOCKEY Atlanta Flames vs Boston Bruins

2:00 **2 57** COLLEGE BASKETBALL
5 22 DRUM CORPS INTERNATIONAL 1979
11 33 MASTERPIECE THEATRE 'Duchess of Duke Street' While Louisa vacations at Lord Haslemere's country estate, she finds Charlie's marriage far from blissful and his wife in emotional turmoil. (60 mins.)

2:30 **4 13** MCHALE'S NAVY
 3:00 **4 13** PROFESSIONAL BOWLERS TOUR Today's show will feature coverage of the \$135,000 Showboat Invitational from Las Vegas, Nevada. (90 mins.)
11 33 UPSTAIRS, DOWNSTAIRS

3:30 **3 3** COLLEGE BASKETBALL Notre Dame vs UCLA

4:00 **2 57** BOB HOPE DESERT CLASSIC
11 33 ALL CREATURES GREAT AND SMALL
17 UNTOUCHABLES

4:30 **4 13** WIDE WORLD OF SPORTS
6 7 8 27 COLGATE MASTERS TENNIS

5:00 **11 33** MASTERPIECE THEATRE 'Poldark II' Ross returns home at last and is reconciled with Demelza. Shortly thereafter, he is challenged to a duel. (60 mins.)
17 NIGHT GALLERY

5:30 **3 3** PROGRAM UNANNOUNCED
17 CHAMPIONSHIP WRESTLING

EVENING

6:00 **2 57** PROGRAM UNANNOUNCED
3 3 7 27 NEWS
5 22 PRISONER
6 8 CONCERN
11 33 FOOTSTEPS 'Hairy Scary' This program stresses the importance of parents' understanding the seemingly irrational fears of their children.

6:30 **2 3 3 57** NBC NEWS
4 13 MCHALE'S NAVY
6 8 MUPPETS SHOW
7 27 CBS NEWS
11 33 KNOW YOUR SCHOOLS
2 57 JAMBOREE
3 3 DANCE FEVER
4 13 THREE'S A CROWD
5 11 22 33 ONCE UPON A CLASSIC 'Rebecca of Sunnybrook Farm' Despite financial troubles, Becky successfully completes her education, but there are many hardships ahead.
6 7 8 27 HEE HAW Guests: Hank Thompson, Janie Fricke, Wally Lattimer. (60 mins.)

7:30 **3 3** AN INSIDE LOOK
4 13 ADAM 12
5 22 DICK CAVETT SHOW Guest: Norman Cousins.
11 33 COLLEGE BASKETBALL Marshall vs V.M.I.
17 SOCCER Atlanta Chiefs vs Detroit Express

8:00 **2 3 3 57** CHIPS Jon and Ponch are jailed for contempt of court when they refuse to identify a police informant during the trial of a mobster. (60 mins.)
4 13 WINTER OLYMPICS '80 'The World Comes To America' Appearing on the special will be Chuck Mangione previewing the theme song he wrote for coverage of the 1980 Winter Olympic Games, and Peggy Fleming, the 1968 figure skating gold medalist. Host: Jim McKay. (60 mins.)
5 22 UPSTAIRS DOWNSTAIRS The adventures and misadventures of the Bellamy family, upstairs at 165 Eaton Place, and their servants downstairs. (60 mins.)
6 7 8 27 LYNDA CARTER'S SPECIAL Lynda Carter will star in her first television special, a music-variety gala with guests Kenny Rogers and Leo Sayer. (60 mins.)
12 13 MOVIE -(DRAMA) *** "Interiors" Diane Keaton, Geraldine Page, Fashionable New York interior decorator tries to impose her standards on her husband and three grown daughters. (Rated PG) (2 hrs.)

9:00 **2 3 3 57** BJ AND THE BEAR Pogo Lil asks BJ for help after she is threatened by people who are after her gold mine. (60 mins.)
5 22 MASTERPIECE THEATRE 'Poldark II' Ross returns home at last and is reconciled with Demelza. Shortly thereafter, he is challenged to a duel. (60 mins.)
6 7 8 27 SATURDAY NIGHT MOVIE 'Outlaw Blues' 1977 Stars: Peter Fonda, Susan Saint James. The drama revolves around a singer-songwriter on the run from the law and the woman who exploits his situation to make him a star. (2 hrs.)

9:30 **11 33** AMERICAN FILM THEATRE 'The Iceman Cometh'
17 RAT PATROL

10:00 **2 3 3 57** PRIME TIME SATURDAY
4 13 FANTASY ISLAND Two dreams become terrifying

nightmares when a beautiful woman fulfills her fantasy of living in a 17th century castle, but is possessed by a spirit. Guest stars: David Cassidy, Tina Louise. (60 mins.)
5 22 ACADEMY LEADERS
17 THAT GOOD OLE NASHVILLE MUSIC

10:30 **17** POP GOES THE COUNTRY

11:00 **2 57** JOURNEY TO ADVENTURE
3 3 6 7 8 27 NEWS
4 13 ABC NEWS
5 22 MONTY PYTHON'S FLYING CIRCUS
17 DICK MAURICE AND COMPANY

11:15 **4 13** CHANGING TIMES
 11:30 **2 57** SATURDAY NIGHT LIVE
3 3 COLLEGE BASKETBALL University of Kentucky vs Vanderbilt
4 13 ROCK CONCERT
6 8 MOVIE -(HORROR) ½ "Gargoyles" 1972 Cornel Wilde, Jennifer Salt. Gargoyle creatures menace an anthropologist and his daughter. (2 hrs.)
7 27 MOVIE -(TITLE UNANNOUNCED)

12:00 **17** ROCK CONCERT
 1:00 **3 3** SATURDAY NIGHT LIVE
 1:30 **7 27** IT'S YOUR BUSINESS

sunday

SUNDAY
 JAN. 13, 1979

MORNING

5:30 **17** CATHOLIC MASS
 6:00 **17** BETWEEN THE LINES
 6:25 **4 13** NEWS
 6:30 **3 3** CHRISTOPHER CLOSEUP
4 13 REV. R.A. WEST
6 8 A BETTER WAY

7:00 **2 57** LEONARD ADKINS
3 3 THIS IS THE LIFE
4 13 REV. LEONARD REPASS
6 8 OLD TIME GOSPEL HOUR
7 27 TOBACCO TALK
17 JIMMY SWAGGART

7:30 **2 57** TIME FOR REFRESHING
3 3 TV CHAPEL
4 13 JAMES ROBISON
7 27 LONE RANGER
17 IT IS WRITTEN

8:00 **2 57** R.A. KING REVIVAL
3 3 MORMON CHOIR
4 13 EVANGELISTIC OUTREACH
5 11 22 33 SESAME STREET
6 8 DAY OF DISCOVERY
7 27 REX HUMBARD
17 THREE STOOGES

8:30 **2 57** KELLY FORK CHURCH SERVICE
3 3 ORAL ROBERTS
4 13 PENTECOST TODAY
6 8 REV. LEONARD REPASS

9:00 **2 57** SUNDAY SCHOOL
3 3 SINGING JUBILEE
4 13 WHAT DOES THE BIBLE PLAINLY SAY?
5 22 SESAME STREET
6 8 CHRISTIAN CENTER
7 27 SUNDAY MORNING
11 33 MISTER ROGERS
17 LOST IN SPACE

9:30 **2 57** REV. LEONARD REPASS
4 6 8 13 ROBERT SCHULLER
11 33 ELECTRIC COMPANY

10:00 **2 57** BIG CREEK BAPTIST CHURCH SERVICE
3 3 THIS IS THE NFL
4 13 SPIRIT OF LIFE
5 22 SESAME STREET
11 33 STUDIO SEE
17 HAZEL

10:30 **3 3 4 13** REX HUMBARD
6 8 ERNEST ANGLE
7 27 DAY OF DISCOVERY
11 33 BIG BLUE MARBLE
17 MOVIE -(DRAMA) *** "Gentleman's Agreement" 1947 Gregory Peck, Dorothy McGuire. A reporter poses as a Jew to write a series of articles on anti-semitism. (2 hrs., 30 mins.)

11:00 **2 57** THE TRIUMPHANT CHURCH
5 22 PEARLS
7 27 IT IS WRITTEN
11 33 FOOTSTEPS 'Hairy

GUINNESS BOOK OF WORLD RECORDS

A captivating mixture of death-defying feats, frivolity and marathon endurance attempts highlight 'The Second New and Spectacular Guinness Book of World Records' airing SUNDAY, JAN. 13 on ABC-TV.

Highlights of the show include: Cathy Lee Crosby (pictured) riding a llama; twelve people climbing out of and on top of an airplane in flight at 7,000 feet and returning to the aircraft; Yogi Berra attempting to set the first record for the longest headstand. He believes he can go for two hours; and Alan Jones, handcuffed and with legs bound, jumping from a 35-foot tower into a pool four-feet deep, which is occupied by 13 poisonous rattlesnakes.



CHECK LISTINGS FOR EXACT TIME

Scary' This program stresses the importance of parents' understanding the seemingly irrational fears of their children.

11:30 **2 57** R.A. WEST REVIVAL
3 3 BILL DANCE OUTDOORS
4 13 JIMMY SWAGGART
5 22 ONCE UPON A CLASSIC 'Rebecca of Sunnybrook Farm' Despite financial troubles, Becky successfully completes her education, but there are many hardships ahead.
6 7 8 27 FACE THE NATION
11 33 UNICORN TALES

AFTERNOON

12:00 **2 57** OLD TIME GOSPEL HOUR
3 3 MEET THE PRESS
4 13 WORLD TOMORROW
5 22 STUDIO SEE
6 8 VIEWPOINT
7 27 DIRECTIONS
11 33 OLD WEST

12:30 **3 3** AT ISSUE
4 13 VIRGIL Q. WACKS
5 22 CAMERA THREE 'The Family: Scenes From British Working Class Life' Part I. This program examines the making of 'The Family', a 12 part BBC series. In this segment, the process of selecting the family and their reasons for participating in the series are discussed. (60 mins.)
7 27 NEWSMAKER

1:00 **2 3 3 57** COLLEGE BASKETBALL Syracuse vs Purdue
4 13 TOWN CRIER
5 22 WASHINGTON WEEK IN REVIEW
6 7 8 27 NBA BASKETBALL Los Angeles Lakers vs Boston Celtics (Premiere; 2 hrs., 15 mins.)
11 33 MOVIE -(MUSICAL) **½ "Palmy Days" 1931 Eddie Cantor, Charlotte Greenwood. A nit-wit becomes involved in a phony fortune-telling ring. (2 hrs.)
17 MOVIE -(DRAMA) *** "Home Before Dark" 1958 Jean Simmons, Dan O'Herlihy. A woman tries to adjust to society after a nervous breakdown. (3 hrs.)

1:30 **4 13** GILLIGAN'S ISLAND
5 22 WALL STREET WEEK 'Happy New Year' Part II. Guest: Arnold Bernhard, Re-siarch Chairman, Valve Line Investment Survey.

2:00 **4 13** ISSUES AND ANSWERS
5 22 COMMENT ON KENTUCKY
4 13 BEN HADEN
5 22 NATIONAL GEOGRAPHIC 'Dive to the Edge of Creation' Dr. R. Ballard and biologist Dr. J.F. Grassle lead an expedition 1.5 miles beneath the ocean surface off the Galapagos Islands, where exotic forms of sea life flourish. (60 mins.)

3:00 **2 57** SPORTSWORLD 1) World Invitational Super Heavyweight Weightlifting from Tokyo. 2) World Invitational Gymnastics championship from England. (90 mins.)
3 3 MOVIE -(COMEDY) ** "The Three Stooges in Orbit" 1962 Three Stooges,

Carol Christensen. Three zan-zies encounter Martian invaders trying to take over the world. (90 mins.)
4 13 MCHALE'S NAVY
11 33 THE LATHE OF HEAVEN This is a film adaptation of Ursula K. Le Guin's best-selling science fiction novel. Bruce Davidson stars as a man whose 'terrifying' dreams literally come true. (2 hrs.)

3:15 **6 7 8 27** SPORTS SPECTACULAR Roberto Duran vs Joseph Nsubuca in a 10-round welterweight fight from Las Vegas, Nevada.

3:30 **4 13** SIX MILLION DOLLAR MAN
5 22 SNEAK PREVIEWS TAKE II

4:00 **5 22** COUSTEAU ODYSSEY 'Blind Prophets of Easter Island' Captain Jacques Cousteau and his crew probe the puzzle of the island's original inhabitants and the giant sculptured heads which stand as mute witnesses to this ancient society's history. (60 mins.)
6 7 8 27 COLGATE MASTERS TENNIS
17 MOVIE -(COMEDY) ** "Reluctant Astronaut" 1967 Don Knotts, Leslie Nielsen. A small town man, deathly afraid of heights, is stunned when he learns that his father volunteered him for the astronaut training program. (2 hrs.)

4:30 **2 3 3 57** BOB HOPE DESERT CLASSIC NBC Sports will provide coverage of the final round of this annual PGA event from Indian Wells Country Club near Palm Springs, California. (2 hrs.)
4 13 SIX MILLION DOLLAR MAN

EVENING

5:00 **5 22** FOOTSTEPS
11 33 NOVA 'Living Machines' This program finds the basis of many commonly used engineering concepts in nature. (60 mins.)

5:30 **4 13** FORUM 19
5 22 OLD HOUSEWORKS

6:00 **4 13** ABC NEWS
5 22 CROCKETT'S VICTORY GARDEN
6 8 NEWS
7 27 FAMILY FEUD
11 33 FREE TO CHOOSE 'Power of the Market' Dr. Milton Friedman, 1976 Nobel Laureate in Economics, examines the economic problems facing the U.S. today. Tonight, Dr. Friedman explains how a free market works. (60 mins.)
17 CHAMPIONSHIP WRESTLING

6:30 **2 57** NBC NEWS
3 3 NEWS
4 13 SHA NA NA
5 22 BONAVENTURE TRAVEL
6 8 CBS NEWS
7 27 JOC HALL SHOW

7:00 **2 3 3 57** DISNEY'S WONDERFUL WORLD 'That Darn Cat' A Siamese cat becomes the key operative in efforts to track down bank robbers and their hostage. Stars: Hayley Mills, Dean Jones. (2 hrs.)



DALLAS

Sue Ellen (Linda Gray, pictured) actively sees Dusty, Pam leaves town and an angry husband, who runs into Jenna, an old girl friend, while Ray ponders if he and Donna have anything in common besides their love, on 'Dallas,' FRIDAY, JAN. 18 on CBS-TV.

J.R. finds himself angry and jealous of Sue Ellen's unexplained nights out as Kristin tries to take advantage of the situation and permanently enter J.R.'s life.

Barbara Bel Geddes stars as Ellie Ewing, Jim Davis as Jock Ewing, Patrick Duffy as Bobby Ewing, Larry Hagman as J.R. Ewing, Steve Kanaly as Ray Krebbs, Victoria Principal as Pam Ewing, Charlene Tilton as Lucy Ewing and Mary Crosby as Kristin.

CHECK LISTINGS FOR EXACT TIME



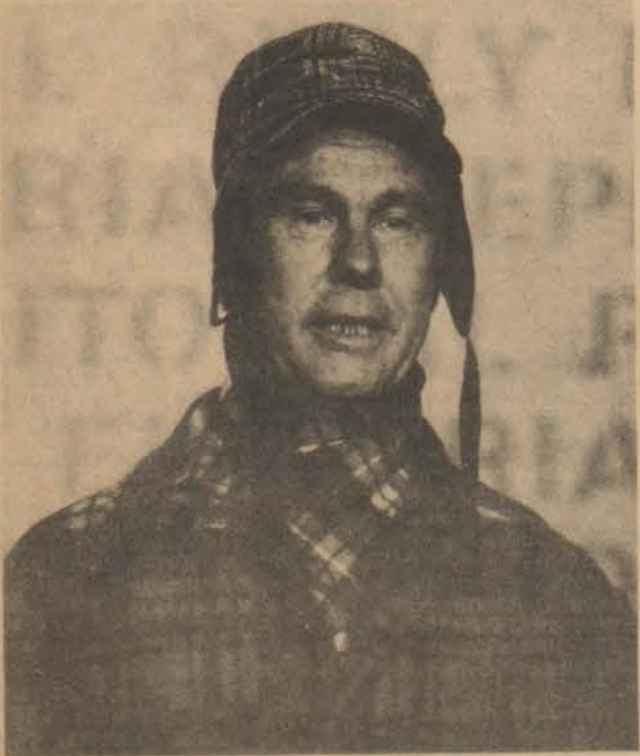
Alice (series star Linda Lavin, right) looks on as Mel (Vic Tayback) receives a very special gift from his sometimes spacy waitress, Vera (Beth Howland), on ALICE, Sunday, Jan. 13 on CBS-TV.

- Francisco' (THUR.), 'Bundle of Joy' (FRI.), 'Destination Gobi' (MON.), 'Strange Lady in Town' (TUE.)
10:30 HOLLYWOOD SQUARES
11:00 HIGH ROLLERS
11:30 WHEEL OF FORTUNE
11:55 NEWS
AFTERNOON
12:00 NEW ZOO REVUE
12:30 PASSWORD PLUS
1:00 DAYS OF OUR LIVES
1:30 AS THE WORLD TURNS

- 2:00 DOCTORS
2:25 NEWS
2:30 ANOTHER WORLD
3:00 GIGGLESNORT HOTEL GENERAL HOSPITAL
3:30 I LOVE LUCY
4:00 PTL CLUB-TALK AND VARIETY
4:30 LONE RANGER
5:00 CAROL BURNETT AND FRIENDS
5:30 M.A.S.H.
ELECTRIC COMPANY

KID SHEET Riddles
1. What part of a car is the laziest?
2. What do you call a bee born in May?
3. What is the healthiest kind of water?
4. Why are cards like wolves?
5. Why are false teeth like stars?
6. What goes on in a planetarium?
ANSWERS
1. The wheels. They are always tired.
2. A maybe.
3. Well water.
4. Because they belong to a pack.
5. Because they come out at night.
6. An all star show.

A FULL SERVICE BANK MEMBER F.D.I.C. The BANK JOSEPHINE
Phone 886-9101 Prestonsburg
• PRESTONSBURG • ALLEN
• GARRETT • HAROLD
Full Service, All Branches...Open Till 7 p.m., Fridays
TV COMPUTLOG SERVICES, INC.



Johnny Carson, as Floyd R. Turbo, a man of many opinions, gives an 'editorial rebuttal' in one of the comedy highlights of 'The Best of Carson,' Tuesday, Jan. 15 on NBC-TV's THE TONIGHT SHOW STARRING JOHNNY CARSON.



