

FOR JAILER
Announcing the candidacy of V. A. SMILEY, SR., for JAILER OF FLOYD COUNTY on the Republican ticket.
His wife and 16 children would deeply appreciate your vote.

A population of 230 million is predicted for the U. S. for 1975. To feed this many people, farmers and ranchers must produce: 16.3 billion pounds more red meat; 47 billion pounds more milk; 20.7 million tons more fruits and vegetables; and 20 billion more eggs.

Some 400,000 sightseers a year visit the famous Ware collection of glass flowers in Harvard's Botanical Museum in Cambridge, Mass. The Reader's Digest reports they were made by Leopold and Rudolph Blaschka in Germany between 1887 and 1938. The 847 models show faithfully the colors and details of 164 plant families.

TIMES REQUESTS PUBLIC NAME TOURIST POINTS IN COUNTY

Does Floyd county have anything to attract tourists?
That's the question often received by the Division of Tourist and Travel Promotion. That is also the question that is being passed along to readers of The Floyd County Times.
Here's the story in full:
The Division of Tourist and Travel Promotion at Frankfort, during the peak season, gets about 5,000 requests a week for tourist information. A would-be traveler to Kentucky will say something like this:

Scholarship Program Expanded at Union

The Union College scholarship program has been increased to include \$400 freshman honor stipends and \$500 annual ministerial grants for students entering the Kentucky or Louisville Methodist conferences following seminary training.

President Mahlon A. Miller has announced that the freshman high school scholarship will be continued through the next three years with annual grants of \$250 for a total of \$1,150 in scholarship aid. Eligibility for the sophomore grant requires a B standing during the freshman year and a 2.3 or slightly above a B average for the next three years.

Church Schedules Meet At Hopkinsville

The editor of THE CHRISTIAN, national magazine of the Disciples of Christ, will be one of the principal speakers at the first general assembly of the Kentucky Association of Christian Churches in Hopkinsville, April 25-27.

Dr. Howard E. Short, professor of Church History at The College of the Bible in Lexington for 12 years before becoming editor of the publication, will speak at a morning session, April 26.

MISS DAVIS INITIATED

Charlene Davis has been initiated into Delta Zeta sorority at the University of Kentucky at Lexington. Charlene is the daughter of Mrs. Georgia S. Davis, of Martin. She is a freshman majoring in commerce.

"We are planning to visit Kentucky during June, and would like to stay at one of your state parks. Can you give us any information on what to see in the various counties we shall pass through?"
The Frankfort office has all the details on such famous attractions as Natural Bridge, Cumberland Falls, Mammoth Cave and the rest. But the division wants additional data on what can be seen in your county.
This means that your help is needed. Officials have asked each reader of this newspaper to make a list of such attractions and send them to this address:
County Tourist Attractions
Div. of Tourist & Travel Promotion
The Capitol Annex
Frankfort, Kentucky

8

(Continued from Page One)
Oran Teater, superintendent of Paintsville city schools, will welcome the delegates and Earl Martin, of Prestonsburg, district rural service chairman, will give the response. The invocation will be given by Rev. Charles Perry, pastor of the Mayo Memorial Methodist Church, and the Paintsville Girl Scout Troop will lead in the pledge to the flag.
Luncheon will be served at twelve o'clock at which time the district will present a member with a life membership in the Kentucky Congress of Parents and Teachers. Mrs. Charles Hall, of Louisa, district chairman of the spiritual education committee, will give the invocation at the luncheon.

7

(Continued from Page One)
with the dangers encountered mostly in small mines and will be written so that the miners and operators can understand the instruction.
The safety program will be carried out in the field with well-trained instructors holding classes for groups of truck-mine operators and workers, Mandt said.
Such instruction is not necessary at the big mines, since many of the big operations employ skilled safety directors and hold memberships in coal-mining institutes which also provide safety directors for member companies.
In the past few years there has been a steady growth in the small-mine industry in Eastern Kentucky. As Frank M. Heinze, of Prestonsburg, assistant to the president of the Turner Elkhorn Mining Company at Drift, pointed out a few weeks ago before the Kentucky Mining Institute, the Eastern Kentucky mine today is either a large operation with all the new mechanical equipment or it is a very small unit employing from four to ten men.
The medium-sized mine with from 25 to 100 employees is almost nonexistent in the area today. These mines were forced out of business, Heinze explained, with the wholesale mechanization of big mines and strip mining as a major segment of the industry.
The displaced miners sought, and sometimes found, employment in the only occupation they knew—mining coal in small mines.
It is these men the Department of Mines and Minerals is attempting to help.
Miners and truck-mine operators taking the safety courses will be tested and graded by the department's instructors. Those passing the tests will be granted certificates as evidence of their proficiency.
Through its program for truck miners, the department hopes to lower the mine accident rate, especially regarding fatalities.
Commissioner Mandt announced that the fatality rate in proportion to tonnage produced is on the decline. For instance only two fatalities were reported in Kentucky during January, the same number reported for January, 1960. In contrast, there were 13 fatalities in January, 1956, five each in that month of 1957 and 1958. The fatality total shrank to four in January, 1959.
Denver is completing a 23-mile tunnel underneath the Continental Divide at a cost of \$50 million to bring water from the Blue River to the city. Named for the late Harold D. Roberts, an attorney who solved the legal problems involved, the tunnel will be open in 1962.

Mrs. W. B. Nalle, editor of the Kentucky Parent-Teacher Bulletin, will install officers to be elected at the conference, and awards will be presented by district chairmen.
Members of the Ninth district board of managers from Floyd county who will attend the conference and participate in the program are: Mrs. Kelsa Elliott, Betsy Layne, juvenile protection chairman; and from Prestonsburg, Robert Wallace, chairman of the reading and library service committee; Miss Blanche Dingus, Floyd county extension chairman; W. J. Reynolds, Jr., president of the Floyd county Council of Parent-Teacher Associations, and Earl Martin.

Units from Floyd county receiving the conference call are Allen, David, Drift elementary, Prestonsburg grade school, Prestonsburg high and Wheelwright.

Spring is clean-up time, just like always, but in Kentucky it is "keep clean" time the year around. Motorists who use the constantly expanding and improving highway system need to keep in mind that the roads are built for travel, according to the Division of Accident Control. Those travelers who use the roads as continuous trash baskets are being inconsiderate of their neighbors. Also, they can be fined up to \$300 for throwing trash on the highway right-of-way.

DR. G. C. COLLINS
DENTIST
MARTIN, KY.
Office Hours: 8 a.m. to 5 p.m.
After 5 p.m. by appointment
PHONE 3015

Spring is clean-up time, just like always, but in Kentucky it is "keep clean" time the year around. Motorists who use the constantly expanding and improving highway system need to keep in mind that the roads are built for travel, according to the Division of Accident Control. Those travelers who use the roads as continuous trash baskets are being inconsiderate of their neighbors. Also, they can be fined up to \$300 for throwing trash on the highway right-of-way.

MARTIN THEATRE

"Where The Crowds Go"

FRI.
"Legions of the Nile"
Linda Crystal, George Marshall
"Studs Lonigan"
Christopher Knight, Venetia Stephenson

SAT.
"Wizard of Bagdad"
(Color)
Dick Shawn, Diane Baker
"Blue Angel"
(Color)
May Britt, Curt Jergens
"Ten Who Dared"
John Beal, Brian Keith

3 BIG DAYS
SUN.-MON.-TUES.
"Where the Boys Are"
(CinemaScope-Color)
Dolores Hart, George Hamilton, Jim Hutton

WED.-THURS.
"Why Must I Die?"
Terry Moore, Debra Paget
"Esther and the King"
Joan Collins, Richard Egan

COMING, Sunday, April 16th—
"Swiss Family Robinson"

Melvin Lafferty, 73, Of Water Gap, Succumbs At Home of Daughter

Melvin Lafferty, 73, well-known Bull Creek man, died Monday night at the home of Water Gap of his daughter, Mrs. Ashland DeRossett, after a two-year illness. His death was ascribed to heart disease.

A son of the Rev. John M. and Martha Crisp Lafferty, he was a lifelong resident of the Bull Creek section. He was a onetime employee of the C. & O. Railway Company and before his retirement was employed by the State Department of Highways. Mr. Lafferty was a member of the Methodist Church. Surviving are his widow, Mrs. Alice Gray Lafferty, one son, Earl D. Lafferty, Dover, Ohio, and three daughters, Mrs. Malinda Wyatt, Pt. Pleasant, Ohio, and Mrs. Marie Stanley, Wooster, Ohio. He also leaves two brothers and five sisters, John Lafferty, of Allen, Jess Lafferty, of Prestonsburg, Mrs. Belle Ellis, Prestonsburg, Mrs. Alice Lafferty, of Water Gap, Mrs. Mary Lafferty, of Lancer, Mrs. Lizzie Calhoun, Dwayne, and Miss Josie Lafferty, of Allen.
The funeral will be held at 11 a.m. Friday, from Lafferty Methodist Chapel, Water Gap, by the Rev. Gene Wells, and burial will be made in the family cemetery there under direction of the Carter & Callihan Funeral Home.

STRAND THEATRE

"Where Friends Meet Friends"

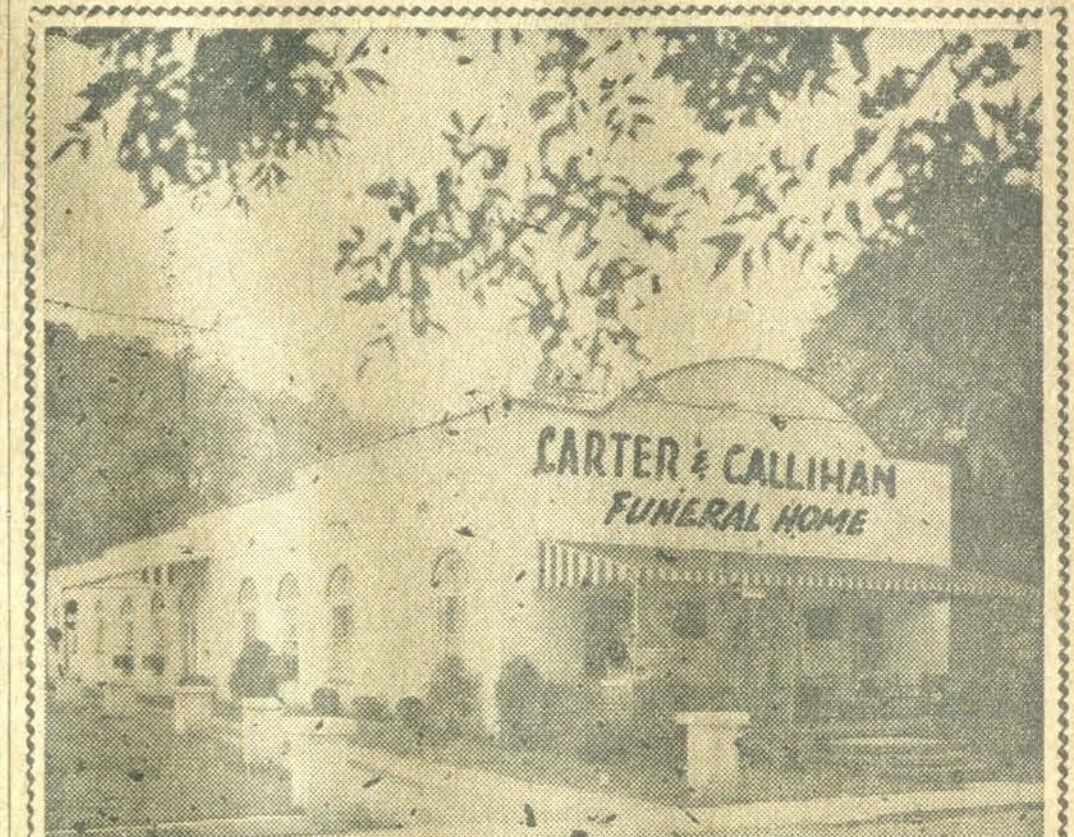
FRI.
"Swiss Family Robinson"
Dorothy McGuire, Tommy Kirk, John Mills, James McArthur
25c and 75c

SAT.
"The Hunters"
Robert Mitchum, Robert Wagner
"Swiss Family Robinson"
Tommy Kirk, Dorothy McGuire
25c and 75c

SUN.-MON.-TUES.
"Swiss Family Robinson"
Tommy Kirk, Dorothy McGuire, John Mills
25c and 75c

WED.-THURS.
"Bad Seed"
Nancy Kelly, Patty McCormick, Henry Jones
All Seats 60c

COMING, Sunday—
"North to Alaska"



Floyd county's finest, most complete, best equipped and oldest funeral home. Complete in every detail—family room, chapel and organ for your convenience. Your inspection of the home built for funerals is cordially invited.
Although Carter & Callihan have expanded in size... added modern equipment over the years... they still render the same friendly, personal service.

Carter & Callihan Funeral Home

Arnold Funeral Home
PRESTONSBURG, KY.

AS NEAR AS YOUR PHONE

Ambulance Service — Anywhere — Anytime

Member, Kentucky Funeral Directors Burial Association. Eligible to service all burial policies.

Phone TU 6-2555 or TU 6-3081

Free! Free!

100 GALLONS HI TEST GAS WITH EACH USED CAR

1957 MODEL OR LATER

BEGINNING MARCH 1 FOR LIMITED TIME ONLY

HURRY UP AND TAKE ADVANTAGE OF THIS BARGAIN SPECIAL

Hughes Motor Co.

Phones TU 6-2170 and TU 6-2180
Prestonsburg, Ky.
Cadillac, Pontiac, Renault, Jeep, GMC

Did you know Gasoline is Taxed at a Rate 5 Times as High as Diamonds?

IN KENTUCKY, YOU PAY \$1.10 TAX ON 10 GALLONS OF GASOLINE

Gasoline taxes will be lowered — if the latest temporary Federal gasoline tax increase expires on June 30th as scheduled by the 1959 Federal Highway Act.

Along with all good citizens, we are in favor of building the roads that the motoring public needs. But, in the last 10 years alone, Federal and State taxes nationwide on gasoline have skyrocketed 51% — skyrocketed to a point where gasoline, a basic commodity, is actually taxed at a rate five times as high as luxuries like diamonds and mink coats.

Must gasoline taxes be so high? Most people believe that gasoline taxes are high because the money is needed to pay for our national highway program. This is not so.

The fact is that out of every highway-user tax dollar collected last year by the Federal government, more than 40 cents was diverted to non-highway purposes.

If these highway-user tax revenues were spent for highways—as they should be—gasoline taxes could be lowered, and the highway program given a boost.

In fact, the Federal-Aid Highway Act of 1959 provides that when the added temporary Federal gasoline tax expires on June 30th, 1961, as scheduled, some \$802 million a year in highway-user taxes—now diverted to the U. S. Treasury's general fund—will instead be deposited in the Highway Trust Fund.

As a result, if the latest Federal temporary gasoline tax

increase expires on June 30th as scheduled—the national highway program will actually get \$225 million more each year than it now receives from the latest Federal temporary gasoline tax increase.

In January of this year, after an exhaustive 2-year survey of national transportation policy, a special U. S. Senate study group confirmed the wisdom of this decision.

This will be good news for you. You will be able to enjoy a steadily improving highway system, at a lower gasoline tax-rate.

HERE ARE THE FACTS ABOUT TODAY'S HIGH GASOLINE TAXES

- In Kentucky, you pay \$1.10 tax on 10 gallons of gasoline.
- You pay 11¢ tax a gallon—4¢ in Federal taxes plus 7¢ in State taxes.
- Gasoline is taxed at a rate 5 times as high as diamonds.
- The average Kentucky motor vehicle owner pays \$79 a year in gasoline taxes.
- Since 1951 there have been three increases in the Federal gasoline tax alone.
- In the last 10 years, gasoline taxes nationwide have skyrocketed 51%—yet the national average price of gasoline itself has risen only 5.5% during the same period.

The Gasoline You Buy Is Taxed Too High!

Presented in the public interest by the Gasoline Tax Education Committee, 575 Lexington Avenue, New York 22, N. Y.

STRAND THEATRE

5 Big Days
FRI-SAT-SUN-MON-TUE

WALT DISNEY'S SWISS FAMILY ROBINSON

THEY TURNED A TROPICAL JUNGLE INTO AN ISLAND PARADISE!

TECHNICOLOR FILMED IN PANAVISION

JOHN MILLS · DOROTHY MCGUIRE · JAMES MCARTHUR · JANET MUNRO · MESSLE HAYAKAWA · TERRY KIRK · BOB CORCORAN · PAVKER PARKER · HO-REID · LARRY TAYLOR

Adm. 25c and 75c

WM. ARROWOOD HARDWARE

15th ANNIVERSARY

SPRING SALE

CLIP THIS COUPON

Bring to Arrowood's and become eligible for

FREE DOOR PRIZES

without making purchase

BEGINS SATURDAY APRIL 8th
FOUR FREE DOOR PRIZES

FOUR FULL FLOORS OF FURNITURE AND HARDWARE FOR YOUR SELECTION!

3 Pc. Steel BATH OUTFIT

Complete with fittings to floor

Reg. \$129.95

\$99.95

3 Pc. Cast Iron BATH OUTFIT

Complete with fittings to floor

Reg. \$159.95

\$138.88

66" Double Bowl CABINET SINK

Reg. \$149.95

\$99.95

Price does not include Traps

54" Single Bowl CABINET SINK

Reg. \$119.95

\$84.95

Price does not include Traps

WATER HEATER

30 Gallon Automatic Gas Water Heater
Fiber glass insulation

Reg. \$89.95

\$58.88

Deep Well WATER SYSTEM

1/2 h.p. Deep Well Pump
2 Years Warranty

Reg. \$169.95

\$138.88

PIPE

Pipe and Fittings For Installation

1/2" plastic pipe—4c per foot

1 1/2" plastic pipe—20c per foot

4" plastic sewer tile—\$3.95 per joint — 19 ft. per joint

MEDICINE CABINET

Side Fluorescent Lights

Reg. \$29.95

\$22.88

RUBBER TILE

For the Bathroom or Kitchen
9x9 Block

Reg. 22c

18c

LINOLEUM

9x12 Gold Seal Rug

\$9.88

6-9-12 foot Linoleum
Cut to fit room size
Special 10% Discount

REGISTER FOR THE 4 FREE DOOR PRIZES

1. Stereo record player. \$159.95 value.
2. Sealy box spring and innerspring mattress. \$59.95 value.
3. 9x12 foam rubber backing rug. \$59.95 value.
4. 5 gal. pail Hanna's outside paint.

With the purchase of any item costing \$39.95 or more you become eligible for the above door prizes.

2 Piece LIVING RM. SUITE

Reg. \$199.95

\$125.00

2 Piece LIVING RM. SUITE

Reg. \$269.95

\$149.95

2 Piece LIVING RM. SUITE

Reg. \$229.95

\$139.95

3 Piece Sectional LIVING RM. SUITE

Reg. \$299.95

\$188.00

20 Cu. Ft. HOME FREEZER

705 lb. Capacity

Reg. \$399.95

\$349.95

16 Cu. Ft. HOME FREEZER

560 lb. Capacity

Reg. \$299.95

\$249.95

RECLINERS

Reg. \$99.95

\$68.88

RECLINERS

Reg. \$89.95

\$58.88

PLATFORM ROCKER

Supported Plastic Cover
Choice of Colors
Save \$20.00 on this Chair

Reg. \$69.95

\$49.95

3 Piece TABLE GRP.

1-Cocktail Table
2-Step Tables

Reg. \$34.95

\$24.88

Choice of light oak or Mahogany finish

9 X 12 RUG

With foam rubber backing

Reg. \$59.95

1/2 Price
\$29.95

9x12 RUG PADS
Reg. \$9.95—\$6.95

WALLPAPER

75 new 1961 patterns

20% DISCOUNT

9 Piece CHROME DINETTE

Reg. \$169.95

\$99.95

Free 32 Pc. Dinnerware Set Included

7 Piece CHROME DINETTE

Reg. \$109.95

\$68.88

5 Piece CHROME DINETTE

Reg. \$89.95

\$58.88

2 Door Metal UTILITY CABINETS

Plenty of Storage Room

Reg. \$19.95

\$14.88

KITCHEN CABINETS

Large Kitchen Cabinet—Flour Bin, Glass Doors, Slide Out Porcelain Top.

Reg. \$79.95

\$58.88

3 Piece BEDROOM SUITE

Cherry Veneer

Reg. \$299.95

\$199.95

3 Piece BEDROOM SUITE

Solid Maple

Reg. \$299.95

\$199.95

3 Piece BEDROOM SUITE

Book Case Bed
Double Dresser, Large Mirror
Big Roomy Chest

Reg. \$169.95

\$99.95

3 Piece BEDROOM SUITE

The most suite for the money
We have ever had

Reg. \$299.95

\$188.88

BEDROOM SUITE

Spring Discount Special
Don't Miss This Buy

Reg. \$229.95

\$125.00

In Addition to Our Furniture and Appliance Sale, All Other Merchandise at Arrowood Hardware Co., Will Have a 10% Discount for Friday and Saturday Only. No Other Hardware or Furniture Store Has Attempted a Sale of This Kind. Big Reductions on Every Item in Our Store.

MANY ITEMS IN THIS SALE PRICED AT THE WHOLESALE LEVEL--COMPARE AND SAVE!

ARROWOOD HDWE. & FURNITURE

PHONE TU 6-3085

COURT STREET

PRESTONSBURG, KY.

3 Piece Poster
BEDROOM
SUITE
Reg. \$299.95
\$188⁰⁰

3 Piece
BEDROOM
SUITE
Reg. \$299.95
\$168⁰⁰

3 Piece
BEDROOM
SUITE
Reg. \$229.95
\$125⁰⁰

3 Piece Cedar
BEDROOM
SUITE
Reg. \$289.95
\$175⁰⁰

3 Piece
BEDROOM
SUITE
Reg. \$249.95
\$158⁸⁸

3 Piece
BEDROOM
SUITE
Reg. \$229.95
\$138⁸⁸

FREE
With Each Bedroom
Suite a full-size
BEDSPREAD
\$6.95 Value

Sealy
**HALF-SIZE
BEDS**
Hollywood Headboard,
complete with box spring
and inner-spring mattress
\$59⁹⁵

Solid Cherry
FURNITURE
Open Stock
Bookcase Beds Spindle Beds
Single, double and triple
dressers
Prices Start At
\$89⁹⁵
per Piece

50-lb.
**COTTON
MATTRESS**
Reg. \$12.95
Now **\$9⁹⁵**

4-6 Coil BEDSPRING
Reg. \$21.95 — Now \$17.95

Wm. ARROWOOD HARDWARE

15th Anniversary Spring Discount

SALE

16 **BEGINS SATURDAY, APRIL 8th**

Our warehouses are full; our four floors are full; many items on sale at the wholesale level.
Come in, compare our prices, and save money!

**ARVIN ALL METAL
IRONING BOARD**

Reg. \$6.95

\$4⁸⁸

FREE - FREE

With the purchase of any Bedroom Suite—
one \$6.95 bedspread.

With purchase of Living Room Suite—one
9x12 rug, with rubber foam backing; or one
3-piece Table Group and 2 Table Lamps.

With purchase of Chrome Dinette—32-piece
set of dinnerware.

RATED NO. 1

Sealy 80th Anniversary Mattress
is rated best
value at **\$39⁹⁵**

Smooth button-free top

Tempered steel coils

Handsome flocced cover

Firm construction



Full or Twin Size, Matching Box Spring \$39.95

These nationally known authorities checked quality, durability, and value of this Sealy 80th Anniversary Mattress.

Willmark Research Corporation shopped the features of competitive mattresses. American Standards Testing Bureau gave this mattress extensive durability tests. Good Housekeeping Institute awarded Money-Back Guaranty Seal.

Big Savings!

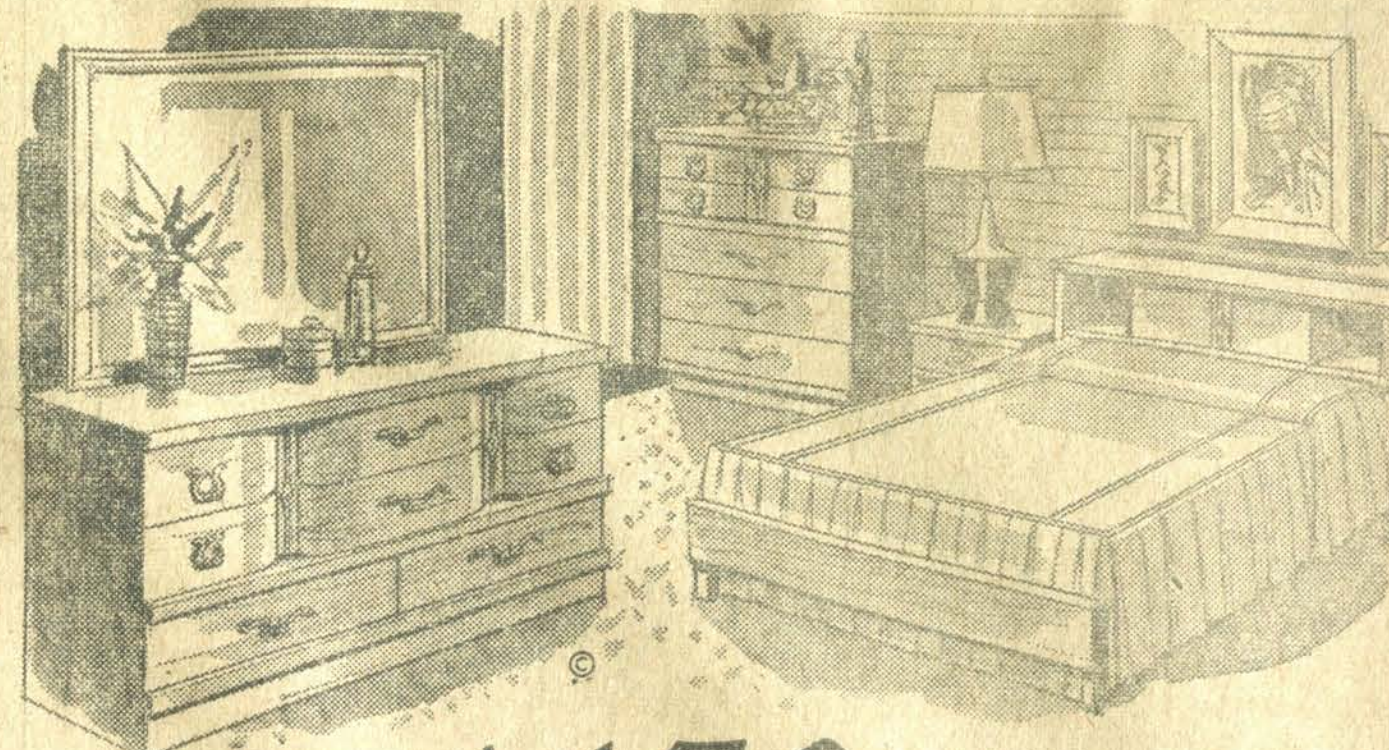
EASY TERMS!

Sealy 80th Anniversary **DELUXE**

A sensational sale value. All the features of the 80th Anniversary mattress plus latex fiber pad reinforcement for extra firmness. Damask ticking.

\$49⁹⁵
full or twin size
mattress or box spring

Double Dresser, Chest, Bookcase Bed
HIGH STYLE AT A BUDGET PRICE



YOU GET:

Double Dresser,
Bookcase Bed,
Chest . . .

\$159⁹⁵

**EASY
CREDIT
TERMS**

- 6 coats hand-rubbed, lustrous finish
- Dustproof, center-guided drawers
- Cabinet woods in Walnut or Mahogany
- Big landscape mirror . . . tilts to any position

Now is the time to buy the bedroom suite you've always wanted . . . handsome modern styling priced far less than you'd expect for a suite of this high quality. Large double dresser, roomy chest and bookcase bed for the price you would ordinarily pay for the double dresser alone. Don't miss this value . . . come in and see it today!

TABLE LAMPS Reg. \$6.95 Value **\$3.88**

ONLY ARROWOOD'S Could Bring You a Value Like This!

2 FOR 1 LOW PRICE

Sealy
**Mattress
and
Box Spring**

Look at this fine Sealy set—feel its buoyant comfort—see how well it's made. Only because we bought such a large quantity can we offer this low combination price. Check it against other sets at \$89.95 and you'll realize the big saving on the two pieces.

Compare at 89.95

59⁹⁵

FULL OR TWIN SIZES

Hundreds of
Super Supporting Coils

Heavy Durable
Woven Striped Ticking

Reinforced
Layers of Cotton Felt

Pre-Built Stitched Border
Crush Proof Edges

ARROWOOD HARDWARE

Phone TU 6-3085 — Court Street
PRESTONSBURG, KY.

