

THURSDAY

This Town-- That World

What is the most delicate thing on earth? Truth. Stretch it just a little bit, and it dies.

Wish I could remember that line that popped into the old noggin just as I was dozing last night. I earmarked it for this column but it has slipped so far back into the sub-conscious that I may have to consult a hypnotist.

For the last few days I have been especially aware of the fact that the years have caught up with me, and I've been doing a little more pining than usual for the days "way back when. Know why? It's all this snow, and a body too old to enjoy it.

Figure this one. If we could have nine or ten inches of snow last week-end when not a flake was predicted by the Weather Bureau, radio, television or newspapers, how deep will this one that's falling now be, since the weather boys have guessed it might go three or four inches? (See Story No. 1, Page 6)

LITTLE DIES OF INJURIES

Melvin Man Charged With Manslaughter After Traffic Death

David Little, 33, of Melvin, was under bonds totaling \$6,700 this week after his auto struck and fatally injured Earl Gene Little, 19, of Phyllis, Pike county, at Wheelwright last Friday night. He was arrested the same night by State Trooper Williamson and brought to jail here.

The injured youth died at 4 a.m. Saturday at the McDowell Memorial hospital.

Driver of the car was held to \$5,000 bond on a voluntary manslaughter count; \$1,000 as a hit-and-run driver; \$500 on a charge of having no operator's license, and \$200 for reckless driving.

It was claimed, County Judge Henry Stumbo said, that David Little was speeding as he was driving from Wheelwright toward Wheelwright Junction, that a tire blew out and the car hit the youth who was on a sidewalk nearby. The tragedy occurred in the vicinity of the Wheelwright swimming pool. The car failed to stop, it was claimed.

The victim was a son of Gomer Little, formerly of Melvin, and grandson of A. J. Little, former peace officer in that area.

MARTIN ASKS HOUSING UNITS

Urban Renewal There Certainty As Council Votes Sale of Bonds

The town of Martin not only is ready for urban renewal, involving slum clearance and a parking area, but also has set in motion the machinery to bring to it low-rent public housing.

Last week, the town's ordinance authorizing the sale of \$75,000 worth of water and parking facilities bonds was published. Sale of the bonds is assured, and the urban renewal venture affecting a sizeable area next to the hill and parallel with the highway through Martin is certain.

Work on the project is expected to be begun in a matter of a few months.

W. W. Burchett, Martin's city attorney, said this week that the City Council there has already applied for low-rent public housing and that the Housing Commission and Council are now awaiting a review of the community's needs, after which the federal agency will allot the needed number of units.

Court House Happenings

SUITS FILED

Togie Salisbury vs. Mary Haddix Salisbury; Hollie Conley, atty. Edward B. Leslie, gen. vs. Darwin D. Roberts, et al; R. S. Wellman, atty. Raymond Turner, d/b/a vs. Grover Sexton; Marshall Davidson, atty. Harry Benner vs. Inland Steel Co., et al; C. W. Napier, atty.

MARRIAGE LICENSES

Elbridge Paek, 64, Paintsville, and Willie Jane Music, 43, East Point. Effert Little, 25, St. Mary's, Ohio, and Alice Faye Preston, 18, Wheelwright.

COMBS SEEKS FIRST BILLION FOR BIENNIUM

Record-Making Budget Includes Biggest Outlay For Educational System

Kentucky made a historic breakthrough with the past Wednesday when Gov. Bert T. Combs presented a billion-dollar budget to the General Assembly.

In education, mental health, highway, agriculture, welfare programs and others, the state will lift itself, the Chief Executive said, "from the bottom of the ladder."

Included in the budget was a request for a record \$271,000,000 for education which represents an increase of 62 per cent over the previous year's appropriation, \$20,000,000 for a veterans' bonus and \$139,825,000 for the road program. The Governor spoke 30 minutes to a joint House-Senate session and his record budget was promptly introduced by House Majority Leader Thomas L. Rife.

The budget for the first time requires the commissioner of highways to submit an annual budget for approval by the commissioner of finance before the beginning of each fiscal year.

It was the huge outlay for education that captured the approval of leaders in that field who have been laboring to raise the level of the educational system from the bottom to an acceptable position with the rest of the states.

Major provisions for education asked by Combs are:

- 1. Raises in teachers' salaries from \$300 to \$900 a year, depending upon qualifications.
2. Higher education will get \$16,000,000 in additional funds, biggest chunk of the money going to the University of Kentucky, the new medical school and state colleges.
3. Raises in teacher retirement pay from \$750 to \$1,200 yearly.
4. Expanded vocational education schools.
5. Increase in free text books for the elementary schools and the start of a program to furnish free texts to secondary schools.
6. Expanded capital outlay for schools from \$400 to \$600 per classroom unit.

"I have found in my travels over the state that our people are more concerned about the education of Kentucky children than any other single problem," Combs had said over the week-end.

Mental health programs will get an additional \$3,397,000; an increase of \$925,000 will go to the crippled children program; welfare work will receive an increase in funds of \$1,000,000; agriculture will get the biggest appropriation in its history, one goal being the complete eradication of brucellosis in the state; and research and industrial promotion with large allotments.

"With this budget and the program of improvement and progress that it makes possible, Kentucky (See Story No. 7, Page 6)

DRAMA GROUP SLATES MEET

Association Planning Is Scheduled on Agenda; Production Advice Asked

The first meeting of the newly-organized Jenny Wiley Drama Association is scheduled here Sunday afternoon, it was announced this week. Sixteen directors and alternate directors of the group will meet at the offices of Combs & Combs, attorneys, at 3 p.m. and tackle the basic problems of presenting an outdoor drama in Jenny Wiley State Park.

Much of the preliminary planning has been done, it was pointed out this week by a spokesman. Site of the proposed amphitheatre in the park and the procurement of the services of a nationally-known dramatist to write the presentation have been tentatively made.

Some of the huge problems that will have to be solved to insure the drama's success were pointed out here. These are organization, housing facilities for tourists, production and many others. The access road, now under construction for a short distance from Hager Gap to the Stratton Branch should be finished before the drama is offered it was said.

Advice on the production of the drama on Eastern Kentucky's most famous frontier Indian captive will be sought from groups or institutions that have had successful dramas, the Association spokesman said. Berea College, which sponsored Wilderness Road, by Paul Green, may be asked to advise the group here.

Mrs. Hughes Named To Scout Position



Mrs. Robert Hughes, Prestonsburg, joined the staff of the Sandy Valley Girl Scout Council on February 1, as district director and will assist the executive director, Mrs. Zella Archer, in providing professional service to the nine-county council area, of which Floyd county is one.

The Girl Scout Council office has been moved from Pikeville to Prestonsburg.

Mrs. Hughes is well-known locally, having been a teacher in the Prestonsburg elementary school for 16 years. She is a graduate of Morehead State College and has done graduate work at the University of Kentucky. She and her husband have two children, a daughter, Nancy, living in Boston, and a son, Henry, a first-year student at Vanderbilt University.

(See Story No. 6, Page 5)

MT. STERLING HOUSING PROJECT IS INSPECTED BY COUNCILMAN

Spurred by his interest in the low-rent public housing proposed for Prestonsburg, City Councilman Tom O. McGuire recently looked in on such a project to see for himself into its workings and benefits.

This week he reported on his findings. And it was an enthusiastic report.

He went to Mt. Sterling where, 82 living units for both whites and Negroes have been constructed and occupied for about two years. He talked to occupants of the housing units—among them, a widow, a veteran and his family, to the mayor of Mt. Sterling, the supervisor of the housing project and others.

He visited the duplexes occupied by white families, then went to the units across town that are occupied by colored families.

"What did all this cost the city of Mt. Sterling?" he asked the Mayor, and the answer was, "Not one cent."

When he learned that these modern living quarters, streets, sidewalks, landscaping and other features were built at a cost which the rent has failed to cover during these two years by \$72,000, he asked what happened about meeting the bond payments. He was not told about this—he was shown the record: the federal government "picked up the check," paid the entire \$72,000.

The Councilman learned that the lowest rent charged is \$21.50 a

month; the highest, \$56—depending upon the income of the tenant. These rental figures include gas and water. The amount charged the tenant is not based on the size of the unit occupied—they run from one-bedroom to three-bedroom quarters—but is charged wholly on the basis of the tenant's income.

"These housing units make just about the prettiest parts of Mt. Sterling," McGuire said. He pointed out the sound, neat construction of the buildings, the sidewalks and streets, the landscaping, the planting of shrubbery—and now an additional project to provide \$6,000 worth of playground equipment this spring.

He spoke of the happiness of the tenants. "I talked to a widow of 16 years, and tears came into her eyes as she spoke of her appreciation of her attractive living quarters, of the neighborhood, how she wasn't afraid to live there, how nice she was treated."

She pays \$21.50 rent for a unit of one bedroom, living room, kitchen, utility room and bath, plus gas and water service.

A veteran, his wife and four children to whom he talked also pay \$21.50 a month for three bedrooms, living room, utility room and bath. "This man told me," the Councilman said, "that he and his family lived out in the country before low-rent housing was made available, and that the house they lived in was so open and cold that actually the baby's diapers froze on its body."

McGuire was particularly impressed by those who benefit from the program. "It's not for people who have money enough to buy or build a home or to enjoy the luxuries. The disabled veteran is given first consideration, next the veteran who is not disabled, then old-age assistance recipients."

The average rental per month expected by the federal agency is \$29, and out of this come water gas to a certain maximum volume, salary of a supervisor and maintenance expenses. "The government does not expect low-rent public housing to be self-liquidating," McGuire said he has learned. Rather, it expects to bear a large part of the load as its contribution toward the welfare of underprivileged groups of its citizens.

Each housing unit, he said, has kitchen cabinets, cook-stove, sink and water heater. The tenant moves his furniture in without any added preparation. McGuire said some of the families he visited had worn furniture but that they have taken pride in their new surroundings and have everything clean and usable.

After considering the benefits gained by low-income tenants, McGuire inquired about the effects public housing had on private landlords in Mt. Sterling. "We have no vacant property," he was told. There are between 90 and 90 on the

waiting list, seeking low-rent housing in Mt. Sterling, he added.

He said he understood the public housing project brought into the city a certain number of families who before the improvement was made had lived outside Mt. Sterling. Many parents and their children, he said, are living in decent quarters for the first time, and at the same time have brought to the city new customers for stores there as well as new users of gas, water and electric power.

Prestonsburg has applied for 100 such low-rent housing units, has been temporarily allocated 40, and also has been notified that \$8,000 in federal funds is available for planning.

A new Housing Commission must be named, however, to succeed the four-man Commission which resigned last week, and favorable action by the City Council is necessary.

LESLIE ASKS APPOINTMENTS

To Housing Commission; Camicia And Fitzpatrick Named To Airport Board

The Prestonsburg City Council adjourned its Monday evening meeting to meet again next Monday night to attempt to name four members of the City Housing Commission which was vacated last week by its four original members.

Two Democrats and two Republicans are to be named. Mayor Edward B. Leslie submitted several names to the Council at last Monday's meeting, and from these a Commission is expected if the city is to participate in the low-rent public housing program.

Dr. George P. Archer appeared before the Council at this week's meeting to urge immediate action favorable to public housing. At the same time he resigned from the Prestonsburg-Pointsville Airport Board. J. R. Camicia was named to succeed him and will serve for a period of two years. H. D. Fitzpatrick, Jr., was reappointed for a three-year term.

Named to the flood control committee and charged with responsibility for operation of flood gates here were Dick Davis, chairman, Burl Spurlock, C. B. Latta and W. R. Callihan.

C. F. Rinehart was reappointed city tax assessor, and a new board of tax supervisors was named to consist of Clabe Bingham, Sam V. Hale and Frank Layne.

The Council directed that warrants be issued against all parking violators who have not paid fines within five days after tickets were given them. (See Story No. 8, Page 4)

Little Sandy Reservoir Approved By Engineers; Cost Set At \$14,000,000

Construction of the Grayson reservoir on Little Sandy River was approved Tuesday by the Board of Engineers for Rivers and Harbors. Preliminary approval had already been granted by the district engineer's office in Cincinnati.

"The reservoir in East Kentucky is expected to cost \$14,000,000. New estimates from the Board of Engineers increased the figure by approximately \$1,400,000.

The board put off making a recommendation on the proposal to build the Kehoe reservoir on Tygart's Creek, holding that it should make no decision until after completion of a comprehensive survey of the Ohio River.

BELL EXTENDS LOCAL CALLS

Additional Equipment Slated For Installation To Serve Four-Town Area

As announced in last week's Times, residents of Wayland and Prestonsburg will be able to call each other without going through an operator.

Byron Simpson, manager of Southern Bell, said that the extension of the service in this manner will complete the free inter-exchange of calls between all telephones in Floyd county, which "is another step towards providing adequate telephone service, and to keep pace with the expanding economy of the county."

Additional equipment will have to be installed in the Wayland, Martin, Allen and Prestonsburg offices along with the modifications in the plant to provide adequate facilities to handle the estimated increase in the number of calls between Wayland and Prestonsburg. This addition will cost more than \$13,000, according to Simpson.

To engineer the additions, or from the manufacturer and install will require until December to complete. This will tie in the new service arrangements with the December directory which will carry the necessary revised dialing instructions.

"We are delighted this improvement in Floyd county telephone service can now be made," Mr. Simpson added.

VA Schedules Meet To Explain New Law

A public meeting to explain the new pension law affecting veterans and their widows and orphans will be held on Sunday, February 28, at the Paintsville courthouse. Olney B. Owen, manager, Veterans Administration regional office, Louisville, announced.

The meeting is sponsored by the American Legion, Disabled American Veterans, Veterans of Foreign Wars and the Kentucky Disabled Ex-Service Men's Board.

SNOW STALLS AREA TRAFFIC SECOND TIME

Regional Road Tie-Up Extends To Lexington; Schools Closed Again

Schools reopened Thursday morning, only to be closed at noon by the second blast of snow that struck today (Thursday). Superintendent V. O. Turner ordered schools served by buses to remain closed until Monday. Reports show the traffic tie-up is as complete in the state as last week-end.

That Old Man Winter still packs a wallop was evident last week-end when a 10-inch snowfall blanketed Eastern Kentucky and brought traffic almost to a complete standstill over a wide area.

The snow began Friday night, continued throughout Saturday and on into the early Sunday morning hours. Highway machinery and men worked long overtime on main roads, but for a time travel between Prestonsburg and Paintsville was stopped and wherever it was attempted elsewhere it was at considerable risk.

Because rural highways remained sheeted with snow or ice, or both, all schools in the county remained closed through Wednesday, reopening their doors today (Thursday).

At least three persons were injured. (See Story No. 4, Page 6)

HOUSING BODY RESIGNS HERE

Retiring Commission Urge Low-Rent Action Taken Immediately

The four members of the Prestonsburg Municipal Housing Commission today submitted their resignations Friday in a letter to Mayor Edward B. Leslie.

At the same time they announced that C. B. Latta, secretary-treasurer, had resigned at the Commission's regular meeting, the preceding evening.

Members of the Commission who thus ended a tenure begun by resolution of the City Council, April 7, 1958, were R. V. May, chairman, Marvin Music, Frank Heinze and Blaine R. Hall.

The Commission noted in its letter to Mayor Leslie that its members had received on Feb. 11 a letter from the City Clerk requesting that they resign. It explained that it had not been able to take earlier action on the request, since it was necessary for the Commission to notify the Housing & Home Finance Agency, Atlanta, Ga., of the present status of the program planned by the Commission. The Commission has directed Mr. Latta as its secretary-treasurer to turn (See Story No. 5, Page 2)

PRINCESS BUYS SEWELL FIRM; FIVE IN KEY POSTS



WILLIAM CRAWFORD



IRVIN C. SPOTTE



GENE MATTHIS



RAYMOND BRABURRY



H. B. PRICE

Acquisition by Princess Coals, Inc., of the Sewell Coal Company at Maryhill, W. Va., as of Feb. 12, resulted in re-assignment of Princess personnel, all of whom have been in recent years associated with the Princess Elkhorn Coal Company at David.

Announcement of the Sewell purchase was made by David L. Francis, Princess Coals president. "This acquisition, along with our present holdings in the Sewell field," Mr. Francis said, "rounds out our production picture in that area. Our output of Sewell coal will amount to a million tons per year. In uniting these two companies we have brought together substantial reserves of some of the finest high-grade, by-product, medium-volatile coal in the country. The future of

Sewell coal is encouraging because of the growing demand this coal has in the steel industry."

The Sewell Coal Company will retain its identity as a wholly-owned subsidiary of Princess Coals, Inc., but will operate within the organization as the Sewell Division, consisting of the Sterling Sewell and Panther mines.

Gene Matthis moves from Princess Elkhorn, where he was general superintendent, to Williamson as general manager of the Sycamore Division. There he will direct the operations of the Alma, Kentucky Cinderella, and Buccaneer Mines.

Raymond Brabbury, formerly director of industrial engineering, will succeed Mr. Matthis as general superintendent of the Princess Elkhorn Division.

H. B. Price becomes general manager of the Powellton Coal Division, advancing from the general superintendent position which he held there since mid-1959.

Mr. Spotte was born in a mining community in western Pennsylvania. Upon graduating from high school in Illinois in 1929, he entered the Missouri School of Mines. He

Spotte, is general manager of sales for Princess Coal Sales Company.

Gene Matthis was born at Yancey, Ky., in 1928. He was graduated from Harlan high school in 1946, attended Eastern Kentucky State College for two years and graduated from the University of Kentucky in 1951 with a degree in mining engineering. He was associated with C. W. Denham Engineers of Harlan, and Blue Diamond Coal Company, of Knoxville, Tenn., prior to enlistment in the Air Force in January, 1952. He was discharged as a second lieutenant in August, 1953. Mr. Matthis entered the industrial engineering department of the Princess Elkhorn Coal Company in 1953 and was made director of the department in 1956. In 1957 he was (See Story No. 2, Page 2)

JOHN GRAHAM CHAPTER D. A. R. MEETS

John Graham Chapter, Daughters of the American Revolution, met February 9 at the home of Mrs. Joe M. Davidson on Court street with Mrs. Everett H. Sowards as co-hostess.

PERSONALS

Frank H. Layne was in Frankfort and Lexington, the first of the week, on business.

Mrs. DuRan Moore was in Lexington, the first of the week on business. Her children visited Mrs. Grover Lowe during her absence.

Miss Veva Kendrick, of Lexington, was here last week to visit her sister, Miss Osa Kendrick, who was critically ill at Miner's Memorial hospital at McDowell.

Harvey Howard entered St. Mary's hospital, Huntington, W. Va., Monday for examination and treatment. Mr. Howard has been ill for some time.

Pete Rippe returned Friday to his home here where he is convalescing from an operation which he underwent recently at a Columbus, O. hospital.

Mrs. Tom Corruthers, of David, is a patient at the Prestonsburg General hospital, suffering from flu.

Mrs. Ella Mellon, of Ashland, spent the weekend here with Mrs. Ollie Davis on Third street.

Mrs. Jennie Martin, of Ashland, spent the week-end with her mother, Mrs. Charles B. Osborne, at Eastern.

Miss Ella Noel White and Mrs. Lillian Rimmer were week-end guests of Judge and Mrs. Edward P. Hill at their country home at Cliff.

Miss Rose Worland, student at the University of Kentucky, spent the week-end here with her parents, Mr. and Mrs. Eddie Worland.

THE FIRST METHODIST CHURCH

Harold W. Dorsey, Minister

- 9:45 Sunday School. Classes for all ages. 10:55 Morning worship. Sermon topic—"Trust in the Lord and Do Good." Broadcast over WDOC. Nursery facilities provided for the small children.

Brother of Floyd Man Succumbs In Pikeville; Burial, Robinson Creek

McKinley Akers, 63, Robinson Creek, Pike county, died at 11:02 p.m., Sunday, Feb. 7, at the Pikeville Memorial hospital after a brief illness.

Akers, a miner, was born in Pike county, a son of Andy Akers and Molly Keel Akers. He is survived by his wife, Mrs. Mallie Little Akers; six sons, Clifford, Bill, Scotty and Woody Akers, all of Robinson Creek; Bruce Akers, Vivian, La. and Jack Akers, Detroit; four daughters, Mrs. Ruth Hooper Nashville, Tenn., Mrs. Thelma Adams, Burdine, Ky., Mrs. Wanda Justice Robinson Creek, and Mrs. Joan Damron, Shelbyana, and a brother, Hatler Akers, of Weeksbury, and two sisters, Mrs. Eunice Jones, Virgie, and Mrs. Phoenix Wallace, Robinson Creek, and 31 grandchildren.

ARNOLD AVENUE CHURCH OF CHRIST

HAROLD C. DICKS, Minister

THE FATHER of our country deserves the respect of all Americans. Washington met the crisis of Valley Forge on his knees in prayer.

"... all things, whatsoever ye shall ask in prayer, believing, ye shall receive." Matthew 21:22

- FRIDAY 6:30 Monthly Fellowship dinner 7:30 Senior Youth SATURDAY 6:30 Junior High Youth SUNDAY 8:45 to 9:00 Christian's Hour—WDOC 10:00 to 11:00 Bible School—For all ages 11:00 to 12:00 Morning worship Message: "The Church—It's Work" 6:00 to 7:00 Junior Youth, ages 6-11 7:30 Evening worship "The Christian Age"—Film WEDNESDAY 7:30 Prayer and Bible Study Hour

Revival Scheduled



Rev. Betty Gay Gilkinson, of Morehead, will conduct a revival at the Prestonsburg First Church of God, Feb. 26 through March 6, it was announced this week by Rev. Moses Kitchen, pastor. Services will be each evening, beginning at 7:30.

Rev. Gilkinson will be assisted by Doris Jones, song evangelist, Rev. Kitchen said. The public is cordially invited to attend these services. 2-18-2t.

Promoted to general superintendent.

Ray Bradbury was born of a mining family in Stoke-on-Trent, Staffs, England, in 1928, and moved with his family to the United States in his infancy. He attended Illinois grade schools and finished high school at Berea College Academy in 1946. He graduated from West Virginia University in 1950 with a degree in mining engineering. Mr. Bradbury joined the industrial engineering department of Princess Elkhorn Coal Company in 1956 and became director in 1957. He is the son of Mr. and Mrs. Arthur Bradbury, of Wheelwright.

Mr. Price was born at Majestic, Ky., in 1919. Upon graduation from Majestic high school in 1938, he entered the electrical and mechanical phase of coal business. He has served as an electrician with Utilities Elkhorn Coal Company, chief electrician with Cinderella Coal Corporation, shop foreman with Princess Elkhorn Coal Company, chief electrician with Pond Creek Pocahontas Coal Company, and maintenance superintendent with Island Creek Coal Company. In 1957 Mr. Price became maintenance superintendent of the Powellton Coal Company at Mallory and was promoted to general superintendent in July, 1959.

Princess Coals, Inc., now operates eleven producing mines through four operating divisions—the Princess Elkhorn Coal Division, the Sycamore Coal Division, and the newly formed Sewell Coal Division. Princess Coal Sales Company, the sales affiliate of Princess Coals, Inc., markets all these coals throughout the coal-burning areas in the eastern half of the United States, Canada, and Europe.

Allen Woman Dies Of Heart Condition At McDowell Hospital

Osie Kendrick, 55, of Allen, succumbed to a heart condition at the McDowell Memorial hospital, at 9 a.m. Monday. She had been ill two years, seriously so eight months.

She was a daughter of the late Malcolm and Claudia Vaughan Kendrick. She was a member of the Methodist Church for 20 years. Surviving is a daughter, Mrs. Lois Hamilton, of Allen.

Surviving brothers and sisters are Charley Kendrick and Miss Veva Kendrick, both of Prestonsburg, Alton Kendrick, Mt. Sterling, and Mrs. Ina Goble, of Ivel.

Funeral rites were held today (Thursday) at the Allen Methodist Church, the Rev. Harold Dorsey and Cohen Campbell officiating. Burial was made in the Davidson Memorial Gardens at Ivel under the direction of Hall Brothers Funeral Home.

(Continued from Page One)

over to the person or persons designated by the City Council all its records as soon as a government audit is completed, the letter of resignation said.

"We take this action without any ill-feeling toward any member of the City Council and only in order to comply with your wish that we resign," the Commissioners wrote. "We offer our assistance and advice to our successors in office on any question which they might desire."

The Commission reported to the Mayor that in the two years of its work it has made substantial progress toward the realization of two major federal projects, as well as the establishment of a progressive planning program under the supervision of the City Planning Commission. It listed the three programs on which it has worked as these:

1. A "Workable Program," inaugurated with the cooperation of the City Planning Commission, which was necessary in order to qualify for any programs on which federal aid is given. This program has been approved by both the state and federal governments and has been re-certified through February, 1961.

2. The "Town Square" Urban Renewal Project, which was approved by the federal government and which is strongly urged for action by the retiring Commission. (This program, however, is no longer regarded as having a chance of further development).

3. Low-rent public housing. The Commission has filed an application with the Public Housing Administration for 100 housing units here. Preliminary certification for 40 such units subsequently was granted, and Prestonsburg has been allocated \$8,000 to begin initial planning of the project.

The retiring Commission urged on Mayor Leslie the importance of naming successors immediately and of proceeding forthwith on this low-rent housing project. It commented: "We feel that the Mayor is faced with the most important decision that has ever been presented a man holding this office: that of the appointment of a Commission which will continue this work in order that the less fortunate people of this community may have a better place in which to rear their children."

Besides presenting the claim that low-rent public housing would benefit only low-income families, widows, old-age pensioners and disabled veterans, the Commission in its letter pointed out that the program would mean \$1 million worth of construction and jobs for many.

In a resolution adopted at its Feb. 11 meeting the Commission recommended that the City Council reconsider the urban renewal project and proceed immediately with "the planning and ultimate construction" of a low-rent public housing project.

SUBSCRIBE FOR THE TIMES!

Dr. R. H. MESSER, Garrett, Kentucky, DENTIST, Phone Wayland 2711, Office Hours, 9-12; 1-5, Office Closed Every Thursday

FLOYD DRIVE HEAD NAMED

W. W. Burchett Picked To Direct RC Effort; Services Are Reviewed

W. W. Burchett, Prestonsburg attorney and member of the Public Service Commission, has been named chairman of the 1960 fund drive of the American Red Cross in this county, Miss Ella Noel White, executive secretary of Floyd Red Cross Chapter, announced this week.

The drive will begin March 7 and will seek a quota of \$7,800. The county has not attained a Red Cross goal since 1957 when the full goal of \$9,400 was reached.

Besides its missions of mercy on a nationwide scale in time of disaster, the Red Cross continues its local services. Miss White cited these items of service within the county during the past year:

Services to 247 members of the armed forces, to 110 veterans and 25 civilians; financial assistance to 18 service men; 119 first-aid certificates, 12 swimming certificates and 14 home nursing and care of the sick certificates issued.

A countywide organization will be effected by the new chairman in an effort to reach the goal set and to give Floyd countyans the opportunity of helping not only those at home but persons in disaster-stricken areas of other parts of the county.

TOPS AUTO STORE BRAKE LINING Bonded Shoes

Forty million potential vacationers live within a day's easy drive of Kentucky.



All your life you'll be proud your ring is an

Artcarved DIAMOND RING GUARANTEED FOR PERMANENT VALUE

Beloved by Brides for over 100 years

As seen in LIFE, SEVENTEEN and

CLYDE B. BURCHETT JEWELER Town Center — Prestonsburg Authorized Artcarved Jeweler

Henderson, nine-day-old son of Edgel and Myrtle Henderson, of Printer, died at Beaver Valley hospital, Martin, Saturday at 4:05 a.m. The cause of death was not given. Funeral services were held at 10 a.m. Sunday at the home and burial was made in the Greenberry Hall cemetery at East McDowell under the direction of Hall Brothers Funeral Home.

ANTIFREEZE GAL. \$1.99 TOPS AUTO STORE

Pile Sufferers Bless SOOTHENE Thousands Now Enjoy Freedom From Pain

If you are one of the thousands of people who suffer the miseries of itching, bleeding or protruding piles, if you have tried the usual remedies and failed to get the results you want, here is good news. SOOTHENE, the new statless remedy, brings you relief you never thought possible without surgery. No more stained clothing or bed linen with SOOTHENE. It ends your miseries and feel comfortable fast get your tube of SOOTHENE from

ROSE DRUG STORE

JUSTELL

(Last week's correspondence) Mrs. Pearl Conn, of Justell, is a patient in the Prestonsburg General hospital. Her condition has been described as fair.

Mr. and Mrs. Malcolm Crum and Mrs. Crum's sister, Minta Climmoms, are flu sufferers.

Mrs. Dow Hunter, ill for the past several days, has been improving. Willard Kazee was visiting Maskel Collins and family over the week-end.

Mrs. Davis and Mrs. Johnny Hall of Martin, were visiting Mr. and Mrs. Bill Stratton last Sunday. Clyde Daniels and family left Friday to attend the funeral of Curt DeLong in Ohio.

Mr. and Mrs. Bill Stratton are no longer confined to their home after a week's siege with influenza. Mr. and Mrs. R. A. Williamson are recovering from flu.

Mrs. Palmer Crum, a teacher at Betsy Layne high school, is a flu victim and has been unable to be in the classroom for the last few days.

Mrs. Lizzie Spears and Cessie Adams have contracted flu and are confined to their homes.

Miss Norma Crum, of Huntington, was called home upon the illness of her parents, Mr. and Mrs. Malcolm Crum, who are flu victims.

Miss Rose Worland, student at the University of Kentucky, spent the week-end here with her parents, Mr. and Mrs. Eddie Worland.

Miss Rose Worland, student at the University of Kentucky, spent the week-end here with her parents, Mr. and Mrs. Eddie Worland.

Miss Rose Worland, student at the University of Kentucky, spent the week-end here with her parents, Mr. and Mrs. Eddie Worland.

Miss Rose Worland, student at the University of Kentucky, spent the week-end here with her parents, Mr. and Mrs. Eddie Worland.

Miss Rose Worland, student at the University of Kentucky, spent the week-end here with her parents, Mr. and Mrs. Eddie Worland.

Miss Rose Worland, student at the University of Kentucky, spent the week-end here with her parents, Mr. and Mrs. Eddie Worland.

Miss Rose Worland, student at the University of Kentucky, spent the week-end here with her parents, Mr. and Mrs. Eddie Worland.

Miss Rose Worland, student at the University of Kentucky, spent the week-end here with her parents, Mr. and Mrs. Eddie Worland.

Miss Rose Worland, student at the University of Kentucky, spent the week-end here with her parents, Mr. and Mrs. Eddie Worland.

Miss Rose Worland, student at the University of Kentucky, spent the week-end here with her parents, Mr. and Mrs. Eddie Worland.

Miss Rose Worland, student at the University of Kentucky, spent the week-end here with her parents, Mr. and Mrs. Eddie Worland.

Miss Rose Worland, student at the University of Kentucky, spent the week-end here with her parents, Mr. and Mrs. Eddie Worland.

Miss Rose Worland, student at the University of Kentucky, spent the week-end here with her parents, Mr. and Mrs. Eddie Worland.

Miss Rose Worland, student at the University of Kentucky, spent the week-end here with her parents, Mr. and Mrs. Eddie Worland.

Miss Rose Worland, student at the University of Kentucky, spent the week-end here with her parents, Mr. and Mrs. Eddie Worland.

Miss Rose Worland, student at the University of Kentucky, spent the week-end here with her parents, Mr. and Mrs. Eddie Worland.

Miss Rose Worland, student at the University of Kentucky, spent the week-end here with her parents, Mr. and Mrs. Eddie Worland.

Miss Rose Worland, student at the University of Kentucky, spent the week-end here with her parents, Mr. and Mrs. Eddie Worland.

Miss Rose Worland, student at the University of Kentucky, spent the week-end here with her parents, Mr. and Mrs. Eddie Worland.

Miss Rose Worland, student at the University of Kentucky, spent the week-end here with her parents, Mr. and Mrs. Eddie Worland.

Miss Rose Worland, student at the University of Kentucky, spent the week-end here with her parents, Mr. and Mrs. Eddie Worland.

Miss Rose Worland, student at the University of Kentucky, spent the week-end here with her parents, Mr. and Mrs. Eddie Worland.

DON'T SETTLE FOR LESS CURRENT DIVIDEND 4% Open a savings account this week and enjoy top earnings for your money during the coming year. Insured safety, of course. FLOYD FEDERAL Savings and Loan Ass'n Prestonsburg, Kentucky

Final Clearance! OF WINTER CLOTHES 1/2 Price AND LOWER SCATTER RUGS 5 Colors 30" x 60" Regular \$2.98 Values Now \$1.98 Ladies' HEAD SCARFS Reg. \$1.00 Now 2 for \$1.00 Childrens' POLO SHIRTS Sizes 1 to 8 Regular \$1.00 Now 2 for \$1.00 Cox's Prestonsburg, Ky. Regular \$14.98 Now \$5.00

Specials! -- Three Big Days! Friday, Saturday, Monday, Feb. 19-20-22 SLICED BACON Southern Star 1 lb. pkg. 39c VICTORY LARD 8 lb. pail \$1.00 PEAS Silver Bar No. 303 can 8 cans \$1.00 ORANGE JUICE Del Monte 46-oz. can 3 cans \$1.00 POPCORN 2-lb. bag 2 bags 39c MARGARINE Blue Ribbon The Favorite 7 lbs. 99c FRESH EGGS 3 doz. \$1.00 Hager May Market SELF-SERVICE Fresh Meats — Fruits — Vegetables Phone TU 6-8981 (Opposite Courthouse) Prestonsburg, Ky.

USE TIMES WANT ADS FOR AMAZING

NO MONEY DOWN ON SWIFT HOMES

For Complete Details on How To Obtain The Swift Home of Your Choice

Call Carl Wise, Phone TU 6-9821

Prestonsburg, Ky. Representative for Lexington Swift Homes

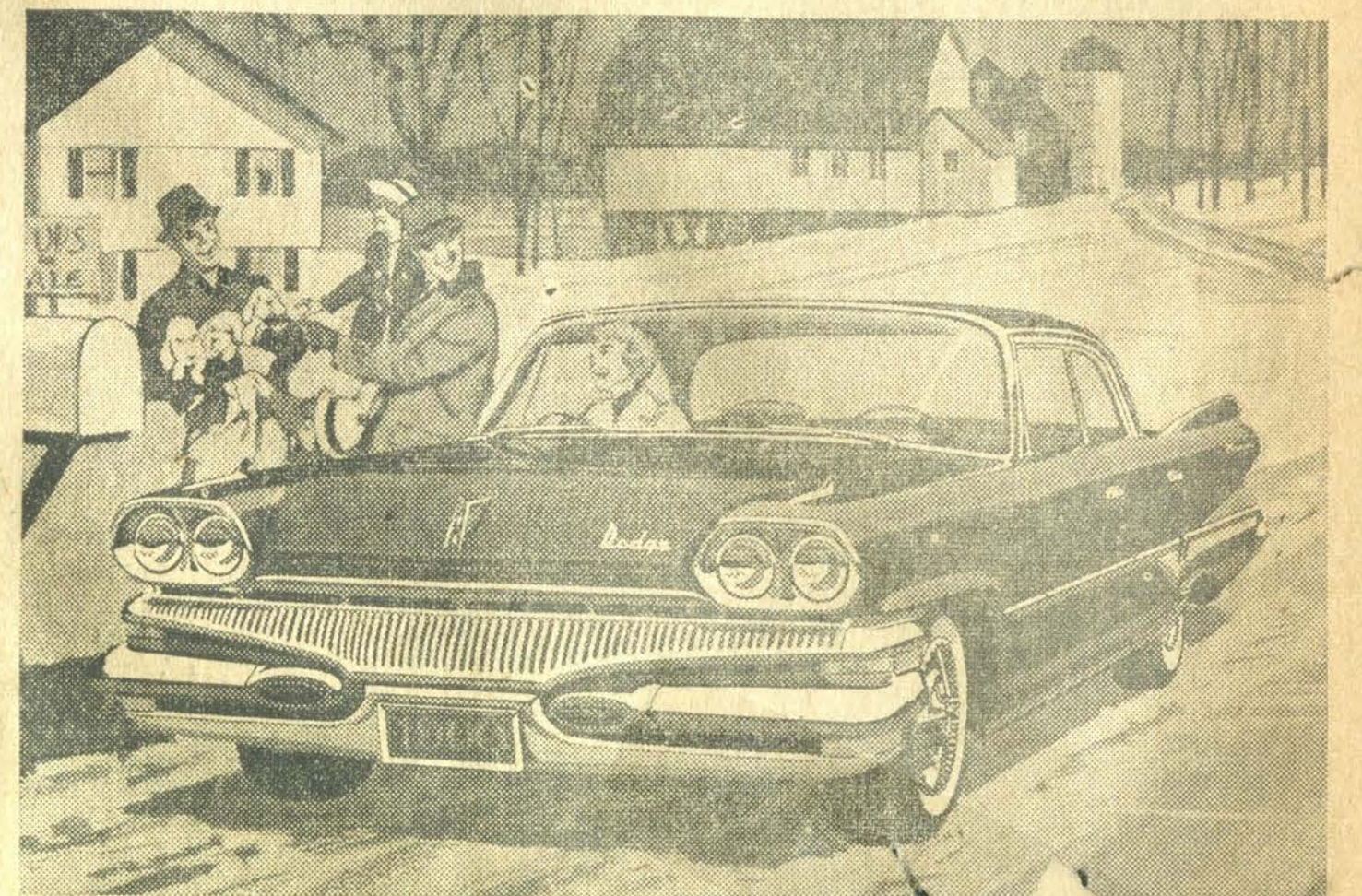
You can't top the Dodge Dart for solid value.

Cost? Down with the lowest. Economy? Up to 400

miles of cruising on a tankful of "regular."

Fine Car features? By the score!

New low-price favorite!



DODGE DART

The Dodge Dart is selling like a house afire. Buyers like Dart's fine-car looks and features. They like its low price and high gas mileage, its solid Unibody construction—squeak-free, rattle-free, rustproofed. They like the way it rides and handles. Visit your Dodge Dealer soon. See and price the new Dodge Dart, America's 1st Fine Economy Car.

DODGE DART	CAR F	CAR P	CAR C
SENECA	Fairlane	Savoy	Biscayne
PIONEER	Fairlane 500	Belvedere	Bel Air
PHOENIX	Galaxie	Fury	Impala

Dodge Division of Chrysler Corporation

NOW DODGE BUILDS TWO GREAT CARS: LOW-PRICED DODGE DART, LUXURIOUS '60 DODGE

Hamilton Auto Sales, Inc.
4th and Broadway
Paintsville, Kentucky

Johnson Auto Sales
Martin, Kentucky

Society

Notes

Phone 4301

BENEFIT COFFEE

Members of the Kiwanians were hostesses at a coffee as a polio fund benefit last Thursday morning, from 10 until noon at the home of Mrs. George Archer.

RETURNS FROM NEW YORK

Mr. and Mrs. Kilmer Combs, Mr. and Mrs. W. W. Burchett flew to New York last week where Mrs. Burchett and Mrs. Combs attended a legal seminar. They returned home Sunday night.

A LASTING TRIBUTE To the Ones You Love

Lots in the Richmond Memorial Cemetery
Prestonsburg, Ky.

Perpetual Care — Terms

See: Fred Cottrell
Joe Hobson
Thomas Hereford
Oliver Webb, Sr.

VISITS NEPHEW AT ST. MARY'S HOSPITAL

Mrs. Grover Lowe spent 10 days recently with her nephew, James Gordon Cox, at St. Mary's hospital in Huntington. He was able to return to his home at Larkslane, Tuesday. His mother, Mrs. Grace Cox, has been with him during his recovery from injuries suffered in an auto wreck.

RETURN TO ASHLAND

Mr. and Mrs. John E. Layne returned to their home in Ashland, Tuesday, after a two weeks visit with his sister, Mrs. Joe M. Davidson, on Court street. They will return March first to continue work on income tax returns.

ENTERTAINS TO BREAKFAST

Mrs. Estill Hyden entertained with a country ham breakfast last Monday at her home on Little Paint Creek. Enjoying her hospitality were Mrs. John W. Graham, Mrs. Grover Lowe, Mrs. Willis Sparks and Mrs. Cliff Halstead.

POLIO BENEFIT TEA

A group of Kiwanians were hostesses to a March of Dimes benefit tea last Thursday afternoon from 2 until 6 o'clock at the home of Mrs. George P. Archer on Arnold avenue. The valentine motif was carried out in red and white in floral arrangements and table decorations. The refreshment table was covered with a low arrangement of red and white carnations, flanked by silver candelabra holding red candles. Mrs. H. L. Ley poured tea. A special feature was the money tree made from contributions of \$21.50 collected by Cub Scout Pack Nos. 21. About 50 guests called during the afternoon.

ENTERTAINS WITH DINNER

Mrs. Grover Lowe was hostess to a group of friends at her home on Third street last Saturday evening with a buffet supper. Enjoying her hospitality were: Mr. and Mrs. Bill Pettrey, Mr. and Mrs. Victor Hale, Mr. and Mrs. James Allen, Mr. and Mrs. Estill Hyden, Mr. and Mrs. John F. Wallace, Mr. and Mrs. Joe P. Tackett, Jr., Mrs. Theckley Short, Mrs. John Hale, Mrs. Rebecca Rasnick, Miss Burieta Gearheart, Mr. and Mrs. John Warrick.

SUSTAINS BROKEN HIP

Mrs. Florence Harris was taken by ambulance Saturday night to a Columbus hospital after X-rays at the Prestonsburg General hospital revealed a broken hip resulting from a fall at the home of her daughter, Mrs. Mary Spradlin on Highland avenue. Mrs. Spradlin accompanied her to Columbus. A daughter, Mrs. Evelyn Harris Corey, lives in Columbus and will aid in nursing her mother.

VISITING SON

Mr. and Mrs. Penn Fitzpatrick, of the Middle Creek road, left last week for a visit with their son, Ike Fitzpatrick, at Alexandria, Virginia.

SUFFERS FROZEN HANDS AND FEET

Howard Perry, local painter, is suffering this week from frozen hands and feet sustained while trying to remove his car from a ditch Monday. His condition is serious.

NEED PAINT? See TOPS AUTO STORE

BENEFIT COFFEE PARTY

The home of Mrs. Marvin Music on North Lake Drive was open to a benefit coffee party for the polio drive last Thursday morning from 10 until noon. A group of Kiwanians were co-hostesses with Mrs. Music. The valentine motif was carried out in flower arrangements. The coffee table covered with a red cloth was centered with an arrangement of red and white carnations, flanked by silver candelabra and burning white candles. Mrs. Lillian Rimmer poured coffee. Contributions netted \$92. Other contributions were received from persons who could not attend.

HERE FOR FRIEND FUNERAL

Relatives from afar who came here Tuesday for the funeral of B. P. Friend at the Carter & Callihan Funeral Home Chapel were: Mrs. Carl Colcord, Paris, Ky.; Mrs. Phillip Norris, Charleston, W. Va.; Mr. and Mrs. Belvard Friend, Mr. and Mrs. Richard Hatton, Gilvia Ann and Richard Hatton, Jr., Louisville, R. S.; Friend, Mr. and Mrs. Fred Cochran, Agnes Cochran, Mrs. Pearl Salisbury, Judy and Robert Lee Salisbury, Miss Anne Friend, all of Hunter, Mrs. Ruth Turner, of Drift, Mrs. Jennie Friend Slatin, Mr. and Mrs. Kelsey Friend, Pem Friend, Mrs. Ralph Taylor, of Mossy Bottom, Mr. and Mrs. Greenville Spradlin and Mrs. Palmer Marshall, of the Middle Creek road.

GO TO FLORIDA

Mr. and Mrs. C. B. Weddington left last week to spend the remainder of the winter at Ft. Myers, Florida.

VISIT RELATIVES

Mrs. Smith Bradley and Mrs. Grover Lowe visited relatives and friends at Larkslane, last Tuesday.

IN LOUISVILLE HOSPITAL

Mr. and Mrs. Fred Cottrell are in Louisville where Mr. Cottrell has been for several days under observation and treatment for a throat condition that has kept him in confinement for several weeks. On Tuesday of this week he underwent an exploratory operation at a Louisville hospital. No report had been received at noon Tuesday.

REV. DORSEY'S MOTHER INJURED

Rev. Harold Dorsey, Mrs. Dorsey and son, Cochran left Monday for Shelbyville to visit his mother in the Shelbyville hospital. Mrs. Dorsey was injured in a fall at her home in Shelbyville, Monday, breaking her shoulder and pelvis. Her friends here regret to learn of her injury.

SUSTAINS BROKEN LEG

James W. "Red" Hazelett, of Abbott Heights, was injured Tuesday in an accident when his jeep skidded on icy roads, turning over five times near East Point. He is suffering from a broken leg at the Prestonsburg General hospital. His many friends here wish for him a quick recovery.

VISITING HERE

Mrs. Ralph Torsch and two children, of Hampton, Va., are here visiting her parents, Mr. and Mrs. Robie Marcum. Mr. and Mrs. J. B. Ford returned home from Hampton, where they visited their daughter, Mrs. Kenneth Verley. Mrs. Verley accompanied them home for a few days' visit Mrs. Torsch and children accompanied them here on their return home.

VACATIONING IN FLORIDA

Mr. and Mrs. Lon C. Hill left Wednesday of last week for Ormond Beach, Florida, for a vacation and visit with his parents, Mr. and Mrs. Ed Hill.

THE FIRST PRESBYTERIAN CHURCH

"The Family Church"
Rev. Paul M. Bingham, Pastor
Sunday
9:45 Church School.
11:00 Morning worship, Sermon: "The Missionary Message of the Old Testament."
Nursery for babies during services.
3:45 Children's choir.
4:30 Youth choir.
5:00 School of Missions, studying Africa. Classes will be conducted for all age groups. Bring sandwiches and enjoy the fellowship time afterward.
7:00 Session committees will meet.
8:15 Session will meet.
Monday
7:30 Parents and teachers Christian Education Training. Panel discussion on topic: "Whose Child Is He or She?"
Tuesday
6:30 Cub Pack No. 6 Blue and Gold banquet.
Wednesday
7:30 Discussion group: "The Church and Race Relations."
8:30 Choir practice.

RETURNS FROM MEXICO

Winston Ford returned home last week via plane from Mexico where he spent two weeks' vacation.

DEATH OF MISS WOOD

Friends here were notified this week of the death following a long illness of Miss Lillian Wood at Gate City, Va., on February 14. Miss Wood is a sister of Mrs. J. R. Hurt, who formerly resided here. Miss Wood visited here many times and has many friends in Prestonsburg.

ATTEND HATCHER FUNERAL

Mrs. Everett H. Sowards and John E. Layne went to Ashland last Thursday to attend the graveside rites of Bruce Miller Hatcher, who died of a heart attack in Jacksonville, Florida on Feb. 7. Mr. Hatcher was the son of Mr. and Mrs. Harry Hatcher of Ashland, and was widely related hereand in the county.

HERE FOR BROWN FUNERAL

Relatives who came here for the funeral of John F. Brown, Feb. 12, were:

Mr. and Mrs. Edmund K. Brown, and daughters, Mary Elizabeth and Veronica Ann, of Shelbiana; Mrs. C. R. Brown and son, Carson, Newport News, Va.; Harold D. Brown, Huntington, W. Va.; Mr. and Mrs. J. B. Brown, Ashland; Mr. and Mrs. F. G. Brown, Ft. Lauderdale, Florida; Mr. and Mrs. C. A. Preston, Mr. and Mrs. Carl Gillum, Mr. and Mrs. B. R. Brown, of Ashland; Mrs. Nora Hawes, Louisa; Mr. and Mrs. Jesse Daniels, of River; Edgar Brown, Ashland; Mr. and Mrs. Jim Akers, of Nippa; Mr. and Mrs. C. A. Daniels, Bill Murphy, Paintsville; Mr. and Mrs. Roscoe Vanhoush, G. T. Williams, Ashland; J. B. Short, Louisa; J. F. Preston, Allen; Mrs. J. K. Stratton and daughter, of Ivel; J. M. Akers, Georges Creek; Mr. and Mrs. Frank Beverly and children, Clintwood, Va.; Mr. and Mrs. Walter Butler, Ashland; Mr. and Mrs. Robert L. Dixon, Nashville, Tenn.; Mr. and Mrs. Webster Noland and sons, Dennis and Timothy, Lancaster, Ohio; Mr. and Mrs. Alex Murphy, Walbridge, Ohio.

DAUGHTER BORN

Mr. and Mrs. Donald Howard, of Lake Drive, are announcing the birth of a daughter at the Prestonsburg General hospital, February 13. She has been named Margaret Virginia. Mrs. Howard is the former Linda Margaret Spradlin. Mother and daughter are doing nicely.

THE FULL GOSPEL TABERNACLE

G. R. Famin, Pastor
West Prestonsburg, Ky.

Sunday
10:00 Sunday School classes for all ages.

7:00 Evangelistic services.
12:00 Voice of the Watchman at 12.
WDOC.

Wednesday
7:00 Prayer and Praise.
"Apostolic praying will bring Apostolic answer."
"Apostolic Unity will bring Apostolic consequences."

For Aluminum Awnings, Storm Windows, Doors, Ornamental Railing Call

Burke Window & Awning Sales
TU 6-6803
Tom James, Salesman
TU 6-2209

SALE! SILVER REPLATING

DURING FEBRUARY ONLY!

AFTER

BEFORE



Each piece will be heavily replated in quadruple silverplate by skilled silversmiths.

Article	Sale Prices
Cream Pitchers	\$ 6.95
Sugar Bowls	7.95
Waste Bowls	7.95
Tea and Coffee Pots, ea.	11.95
Water Pitchers	11.95
Serving Trays (per sq. in.)	.07

Regardless of their condition . . . whether silver, copper, gold or nickel . . . trophies, churchware, etc. . . bring them in for free estimates

LIMITED TIME ONLY . . . BRING ARTICLES IN TODAY!

WRIGHT BROTHERS, Jewelers
PRESTONSBURG MARTIN



PORK LOIN Whole lb. 39c
RIB ROAST Pork lb. 35c
TOMATO SOUP Campbell's No. 1 Can 10c
MARGARINE EATMORE 7 lbs. \$100
ORANGES Florida Valencias 5 lb. bag 39c

★ **FREE 50 Top Value Stamps** with this coupon and purchase of 3 jars Smuckers Strawberry Preserves 3 12 oz. jars \$1
Coupon expires Saturday, February 20, 1960

★ **FREE 100 Top Value Stamps** with this coupon and purchase of 3 lbs. or more boneless beef roast or boneless beef stew
Coupon expires Saturday, February 20, 1960

★ **FREE 50 Top Value Stamps** with this coupon and purchase of Large Pink Iced Angel Food Cake each 69c
Coupon expires Saturday, February 20, 1960

★ **FREE 50 Top Value Stamps** with this coupon and purchase of 10 lb. mesh bag Idaho Potatoes
Coupon expires Saturday, February 20, 1960

THE FLOYD COUNTY TIMES

Published Every Thursday by
Prestonsburg Publishing Company

NORMAN ALLEN Editor
HENRY P. SCALF Associate Editor

Subscription Rates:
In Kentucky, per year, \$3.00 • Outside Kentucky, \$4.00
Entered as second class matter June 18, 1927, at the postoffice at Prestonsburg, Kentucky, under the act of March 3, 1879.

Low-Rent Public Housing
Deserves Serious Consideration

With urban renewal apparently dead and laid to rest for good and all, Prestonsburg's City Council should give immediate and earnest consideration to the plan which would bring to this community low-rent public housing.

Immediate action is needed because delay could cost Prestonsburg an improvement program valued in dollars and cents at around \$1,000,000. Any community having the need of improvements, more work and general progress that Prestonsburg obviously needs can ill afford to let opportunity knock unanswered.

Full consideration of such a community program should be given because it offers so much to the community.

First of all, the cost of low-rent public housing entails no local financial sacrifice whatsoever. Federal funds finance acquisition of property and construction of homes, and the cost is repaid by rental of the property. All the risk is taken out of this program for the local community; the federal authority sets up even a fund to reimburse the community for local taxation lost by converting tax-paying properties to public ownership.

Low-rent public housing is designed to meet the needs of low-income groups, to provide modern living facilities at low cost for those who otherwise are of necessity forced to occupy unattractive, uncomfortable and certainly uninspiring living quarters. It meets human needs, restores dignity to living for many who are not financially able to pay the rent on neat, well-heated and well-ventilated homes or apartments.

A striking example of what this type of housing program can mean to a community may be seen in Mt. Sterling, Ky. Inspection of those homes and a study of how that community went about the duty of meeting the needs of its less fortunate residents would be worthwhile.

Former Mine Foreman
Succumbs At Louisa;
Was Knott-Co. Native

The Stone, 69 years old, former mine foreman at Wayland, died at Louisa at 4:15 p.m., last Thursday. Death followed an illness of three weeks.

A native of Pippa Passes, Knott county, he was a son of Armenda Stone. He was well-known in the Wayland section where he resided and was employed for years. He was a member of the Masonic order.

Surviving are his widow, Mrs. Lorraine Owens Stone, one son, Preston Stone, Kendallville, Ind., and six daughters, Mrs. Ray Thornsberry and Mrs. Priscilla Campbell, both of Louisa, Mrs. Bert Kidd, of Drift, Misses Plottie Jean, Phyllis Annette and Debra Ann Stone, all of Wayland. He also leaves 14 grandchildren.

Funeral rites were conducted Sunday from the Ivy Point Baptist Church at Garner, the Revs. Coy Combs, Bert Howard and Leonard Stone officiating. Burial was made in the family cemetery at Pippa Passes under direction of the Young Funeral Home.

MONUMENTS

Cutting and erecting all types

Office Phone Allen 2413
Residence Phone 2305

Sandy Valley
Monument Co.
ALLEN, KENTUCKY

NON-DRINKERS

Auto Insurance

at
Lower
Cost

PREFERRED + PLUS
AUTO POLICY

gives complete coverage by America's original non-drinkers auto insurance company.

Preferred Risk Mutual
INSURANCE COMPANY
for Full Information

Harold E. Conn
Phone Wheelwright 9-2241
Wheelwright, Ky.

Dr. Edward B. Leslie

DENTIST

Wright Bldg., Prestonsburg
Office Phone — 2010
Residence Phone — 6131

B. P. Friend, 91, Victim
At Franklin, Tennessee;
Rites Conducted Tuesday

B. P. Friend, oldest living past master of Zebulon Lodge No. 273, F. & A. M., Prestonsburg, died at the age of 91, Thursday of last week, at Franklin, Tennessee.

Mr. Friend was a former coal operator, accountant and employee of The Bank Josephine here. He lived for a few years with a daughter, Mrs. F. C. Colcord, at Paris, Ky., now of Charleston, W. Va.

He was a son of Robert and Rhoda Parsons Friend. His wife, Judy Fitzpatrick Friend, preceded him in death in 1952. Surviving besides Mrs. Colcord, is a son, Robert Friend, of Hunter; a half-brother, Tom Friend, and a half-sister Mrs. Jenny Staton, both of Mossy Bottom.

Funeral rites were conducted Tuesday at 1:30 p.m. from the Arnold Chapel, the Rev. Harold Dorsey officiating. Burial was made with Masonic rites in the Mayo cemetery under the direction of Carter & Callihan Funeral Home.

Alamander Collins, 90,
Father of Floyd Man,
Victim At Pikeville

Funeral services for Alamander Collins, 90, of Regina, Pike county, were held at 10 a.m., Sunday, Feb. 7, at the Symara Church at Wolf-pit.

The Revs. Fon Bowling, Delbert Sanders and Grover Adkins officiated. Burial was in the Marrowbone cemetery under direction of the J. W. Call & Son Funeral Home. He died at 1 a.m. last Thursday at the Pikeville Methodist hospital after an illness lasting six months.

Collins, a retired blacksmith, was born in Johnson county. He was a son of Peter Collins and Rachel Arms Collins. He was a member of the Free Will Baptist Church.

He is survived by his wife, Mrs. Nan Collins; three sons, Elzie Collins, of Hueysville, John Collins, Marion, Ohio, and Pete Collins, Regina; two daughters, Mrs. Virgie Haney, Uhrichsville, Ohio, and Mrs. Susie Hunt, Columbus, Ohio; a brother, Sam Collins, Paintsville, and two sisters, Mrs. Rosa Lee Gullett, Paintsville, and Mrs. Shellie Howard, Detroit.

THE BEST IN
TV SERVICE

Don't wait until the all-important Picture Tube goes completely before replacing it... call us at the first sign of dull, foggy pictures. If your Picture Tube does have to be replaced we will recommend the finest Picture Tube available — an RCA Silverama Super-Aluminized Picture Tube, warranted for one full year by RCA.

For fast and reliable TV service, just clip out this ad with our name and phone number and keep it handy.

Televisions For Rent
THOMAS HEREFORD
Prestonsburg Phone 2020

HEADQUARTERS FOR
Silverama
PICTURE TUBES Silverama

Aged Prestonsburg Man
Dies At Martin; Rites
Held At Arnold Chapel

Noah Harris, 84, of Prestonsburg, succumbed to the infirmities of old age at the Beaver Valley hospital, Martin, Wednesday of last week.

He was a son of Kelsey and Miriam Gearheart Harris. He was never married and had no surviving brothers or sisters.

Funeral services were held at the Arnold Chapel, Saturday at 10 a.m., the Rev. Ted Nelson officiating. Burial was made in the Gearheart cemetery here under the direction of Carter & Callihan Funeral Home.

DR. M. J. LEETE

DENTIST

Ground Floor Office
Telephones:
Office 2918 Home 7591
PRESTONSBURG, KY.

PAUL FRANCIS

Prestonsburg, Ky.

MEAT		CHICKEN FEED	
Pork Liver, 1 lb.	20	Starter and Grower, 25 lbs.	1.35
Pork steak, 5 lbs.	2.00	Starter and Grower, 50 lbs.	2.50
Pork chops, 5 lbs.	2.25	Starter and Grower, 100 lbs.	4.75
Neck bones, 5 lbs.	1.50	Chick grain, 25 lbs.	1.00
Pork tails, 5 lbs.	.85	Chick grain, 100 lbs.	3.75
Pork sausage whole hog		Broiler mash, 100 lbs.	4.75
1 lb., 40; 5 lbs.	1.75	Turkey starter, 50 lbs.	2.75
Pork ribs, 5 lbs.	2.25	Egg mash, 25 lbs.	1.25
Dressed hogs whole or halves		Egg mash, 50 lbs.	2.50
head off leaf lard out lb.	.25	Egg mash, 100 lbs.	4.45
Smoked bacon platts, lb.	.15	Hen scratch, 100 lbs.	3.95
Smoked jowles, lb.	.15	HOG FEED	
Dry salt bacon, lb.	.19	Pig starter, 25 lbs.	1.25
Breakfast bacon, 10 to 12 lbs.	.30	Pig starter, 50 lbs.	2.35
Breakfast bacon, 14 to 20 lbs.	.27	Pig and Sow, 100 lbs.	4.50
Country bacon smoked	.35	Pig and Sow, 50 lbs.	2.50
Country hams one year old	.95	Hog fattener, 100 lbs.	4.2
Ham hocks, lb.	.15	Middlings, 100 lbs.	2.95
BEEF		GRAIN	
Beef hind and front quarters,		Horse and mule, 100 lbs.	3.75
lb.	.50	Cracked corn, 25 lbs.	1.00
Hamburger nothing added, but		Cracked corn, 100 lbs.	2.85
lean red meat no filler, lb.	.45	Shell corn, 25 lbs.	1.00
Bucket steak packed, 5 lbs.	.79	Shell corn, 100 lbs.	2.75
Beef liver, 1 lb.	.40	Cats, 100 lbs.	3.50
Cheese, 2 lbs.	.75	Oyster shells, 25 lbs.	.65
Cheese, 5 lbs.	2.25	Chicken litter large bag	1.00
Franks all meat, 1 lb.	.50	Dog food, 25 lbs.	1.80
Lunch meat, 6 lb can	2.25	We now have baby chicks in	
Canned hams, Armour's, 10		stock.	
lbs.	7.50	Now is the time to buy your bee	
Pigs feet 1/2 gallon	1.10	supplies. We have a full stock.	
Pigs feet 3/4 gallon	2.00	Bed spreads, full size	2.95
Bologna, Blue Grass, lb.	.35	Rugs 9 x 12 feet	4.95
Bologna, Kingan all meat	.45	PAPER	
Hot franks, 1/2 gallon	2.00	We have a full line of deep	
We have a new meat processing		freeze paper and tape.	
department in now. You can		PAINT	
bring your fresh dressed beef or		We can save you up to 40% on	
ponk to us and we will chill, cut,		your inside and outside paint.	
wrap and quick freeze it for you.		ROOFING	
We can also smoke your cured		45 lbs.—3 ply roofing	1.98
bacon and hams for you.		55 lbs.—4 ply roofing	2.50
DAIRY		65 lbs.—4 ply roofing	2.75
16% Dairy print bag	3.75	90 lb roofing	3.71
24% Dairy print bag	3.95	Roof cement, quart	.40
Stock feed, 100 lb. bag	2.75	Roof cement, gallon	1.00
Calf Starter, 50 lb. bag	2.55	Roof coating, 3 gallon	2.95
		We have a full line of SEED,	
		and FERTILIZER.	
		By selling for cash we can save	
		you money.	

PAUL FRANCIS

Phone TU 6-2450 • Prestonsburg, Ky.

BALANCED!



PONTIAC—ONLY CAR WITH
WIDE-TRACK WHEELS

Wide-Track widens the stance, not the car. With the widest track of any car, Pontiac gives you better stability, less lean and sway, accurate control.

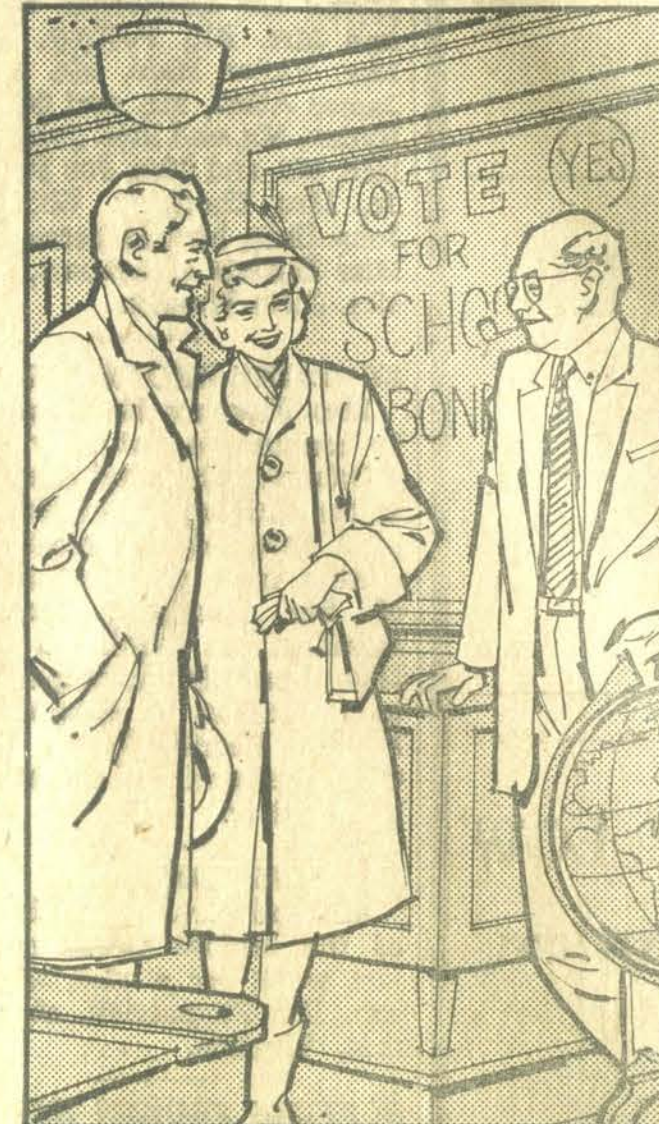


SEE YOUR LOCAL AUTHORIZED PONTIAC DEALER

HUGHES MOTOR COMPANY

South Lake Drive • Prestonsburg, Ky.

COOPERATION is a Kentucky tradition!



COOPERATION
brings electricity to 4,443 rural families in Johnson, Lawrence, Floyd, Knott and Martin counties.

SCHOOLING YOUNGSTERS... OR SUPPLYING ELECTRIC POWER!

Providing the very best education for the younger generation has always been a popular cause here in Kentucky. Wherever there's a school you'll find people working together to be sure that the children of today get a better education. You'll find the same spirit of cooperation at work, improving other youth activities, too. It's one of the traditional ways Kentuckians act together for the benefit of all.

Rural electrification is neighborly cooperation, too. Kentucky's Rural Electric Co-ops... created by folks who got together to make a better life for themselves... are a good example of how neighborly cooperation serves our Commonwealth. As the countryside has brightened and prospered, so the townspeople have benefited too. The new rural prosperity made possible by electrification is spent in cities and towns.

Rural Electricity Benefits Everyone



BIG SANDY
RURAL ELECTRIC
CO-OP

ANNOUNCEMENT

An Educational Program For The Children

I am a candidate for the Floyd County Board of Education, Division No. 4 and solicit your support at the November, 1960 election upon the following platform:

- Restore the teaching profession to its proper dignity by removal of Gestapo tactics and threats to teachers.
- Increase the salaries of all teachers by eliminating waste and unnecessary jobs.
- Bring all good teachers who have been run out of Floyd county back home to our own schools where they are needed.
- Keep good teachers teaching by creating an atmosphere of friendliness and good will among all school employees.
- Appoint a well trained, qualified Superintendent of Schools who has the ability to supply the educational leadership needed in Floyd county.
- Make appointments to all positions in the school system on the basis of qualifications.
- Keep the school system and the teachers free from all political entanglements.
- Improve the Course of Study in all high schools so that our children will not be handicapped because of a meager background when they go to college.
- Work with an Educational Advisory Committee made up of citizens from every community in the county to help formulate school policy and to develop a wise school building program.
- Encourage Parent-Teacher Association groups in every school district.
- Develop a more economical maintenance program by employing local labor thereby eliminating the many unnecessary permanent employees on the payroll.
- Provide a transportation program that will not force children to leave home before daylight and return home after dark, and eliminate discrimination between children attending rural schools and consolidated schools.

CURTIS STUMBO

McDowell, Ky.

Endorsement and Pledge of Support

We, Ray Howard, board member, Educational District No. 1, and John G. Hall, board member, District No. 2, endorse and support Curtis Stumbo, candidate for member of the Board of Education, District No. 4. We are pledged to this unity program and urge everyone interested in a better school system to support Curtis Stumbo.

Signed

RAY HOWARD
JOHN G. HALL

DR. G. C. COLLINS
DENTIST
MARTIN, KY.

Office Hours: 8 a.m. to 5 p.m.
After 5 p.m. by appointment
PHONE 3015

NOTICE

We are authorized to announce Mrs. W. D. Osborne, of Bypro, Ky., as a candidate for member of the Floyd County Board of Education, Educational Division No. 4.

Broiler consumption has increased 105 per cent in the U. S. in the last 25 years.

KNOW YOUR FLORIST

Stop By at Norton Floral Co.

Meet and Get Acquainted with
CARL and DOROTHY DAY

Who Manage

NORTON FLORAL CO.

South Lake Drive
PRESTONSBURG, KY.

Phone 7552

Your Complete Florist

FLOWERS FOR ALL OCCASIONS

Funeral Designs, Birthdays, Hospital Vases,
Anniversaries, Weddings, Thank-You Flowers—

Compliment Your Hostess—

FREE DELIVERY

We Wire Flowers Anywhere

**Mrs. Perlina Prater,
Age 69, Of Blue River,
Dies At Daughter's Home**

Mrs. Perlina Ousley Prater, 69, of Blue River, died Thursday of last week at the home of a daughter, Mrs. Arizona Dotson, West Prestonsburg.

Mrs. Prater was a daughter of the late Dick and Lucinda Ratliff Cusley and the widow of Malcolm Prater who preceded her in death in 1957. Surviving sons and daughters are Ed Prater, of Blue River; Asbury Prater, Claypool, Ind.; Talt Prater, Sidney, Ind.; Mrs. Allie Hale, MacArthur, Ohio; Mrs. Roxie Hale, New Trenton, Ind.; Mrs. Elizabeth Whitaker Marion, Ohio; Mrs. Lola Robinson, Marshall, Michigan; Mrs. Lona Hughes, Claypool, Ind.; and Mrs. Dotson. Surviving brothers and sisters are Ed Ousley, Hamden, Ind.; Billy Ousley, MacArthur, Ohio; Alvin Ousley, Silver Lake, Ind.; Alonzo Ousley, Alger, O.; James Ousley, of Risner; Mrs. Lizzie Reffet, Hamden, Ind.; Mrs. Alice Poe, Alger, Ohio, and a half-brother, Robert Shepherd, of Berea.

Funeral rites were conducted Sunday from the Dotson Pentecostal church on the Middle Creek road, the Revs. Steve Whitaker and Forrester Prater officiating. Burial was made in the Prater cemetery at Blue River under the direction of Carter & Callihan Funeral Home.

NOTICE

Tax books of the City of Prestonsburg are now in my hands and will be in the Mayor's office at the Municipal Building Monday through Friday each week from 9 a.m. till 2 p.m., and on Saturdays till 12 noon. The 2% period has been extended to include Feb. 29, 1960.

LEO CARTER
Tax Collector
City of Prestonsburg, Ky.

2-18-2t.

USE TIMES WANT ADS!

**WOMAN'S CLUB PLANS
LIBRARY READING ROOM**

The Reading Room at the Regional Library will soon be ready for use, it was announced this week.

The walls are painted, the floors are sanded, curtains hung, most of the furniture has arrived and within two weeks the final touches will have been added, according to Mrs. Burl Suprock, chairman of the Community Development Contest committee of the Prestonsburg Woman's Club. This committee composed of Mrs. Spurlock, Mrs. Virgil Goble, Mrs. James Donahoe, and Mrs. Clyde Burchett has been at work for the past six weeks, shopping for all the things which they believe will make a beautiful and useful room.

The color scheme selected is beige, white, and black with accents in persimmon and grass green. One corner of the room is designed to provide a setting for group meetings and contains two beige sofas with a corner table separating them and coffee tables of blond birchwood. Completing this grouping are two persimmon fiberglass arm chairs. Another corner is to be devoted to reading and research, and the committee selected a round table in black lacquer and placed around it six white fiberglass chairs of modern design. A third corner is equipped as a refreshment area, where coffee makers and sandwiches may be concealed behind decorative screens of muted turquoise fiberglass. On the inside wall of the room will be placed a third sofa covered with grass green corduroy and flanked on either side with rows of bookcases painted in a matching green. Here will be placed the reference works for the use of students and others.

One outstanding feature of the room will be the record player which will be moved into this room for more effective use. Provision is also to be made for use of a movie projector and screen and portions of the collections of paintings are to hang here.

This project was made possible only with the help of the Floyd County School Board, the Library Board, the regional staff and Librarian, Robert Wallace. It has been supported by various clubs in the community, the Jaycees, the friends of the library, and the Prestonsburg Kiwanis Club, as well as the Woman's Club. The Woman's Club has spearheaded the drive, for they have made it their entry in the Community Development Contest which is sponsored by the General Federation of Women's Clubs, and covers the two-year period from June, 1958 to June, 1960. Financial assistance from other clubs was essential to the success of the project according to Mrs. R. V. May, president, since the cost of furnishing the room will amount to approximately \$1,000. The Woman's Club portion of the cost was raised largely by the club Finance committee under the leadership of its chairman, Mrs. J. H. Keenon, by promotion of a birthday calendar, a rummage sale, and a candy sale. In addition, bonds which the club bought over the years for library use were cashed and used. The Craft workshop contributed the proceeds from a Christmas gift bazaar which it sponsored.

Besides furnishing the room, the club Music committee, Mrs. E. R. Burke, chairman, sponsored a record shower for the record player. The Spiritual Values committee, Mrs. F. H. Layne, chairman, has given each year a book with religious emphasis. The Garden committee, Mrs. Virgil Goble, chairman,

planted a flower bed in front of the library. Members of the club served as hostesses during the open house when the library was opened officially. Many of the members are members also of the "Friends" and have contributed books individually. Some have served as "critics" and one member served last year as Floyd county chairman for Library Week and is currently serving as a member of the Library Board.

When arrangements are complete, those who have assisted so generously with this project will be invited to an initial open house, followed during Library Week by special events under the direction of Mrs. J. H. Keenon. The room will also be used on March 12 for the Seventh district Woman's Club fashion sewing contest. "It is the hope of all members of the club that this room will be used by the community and for the community," the club president said.

Having been a Brownie leader, an Intermediate leader, and Day Camp director for three years, Mrs. Hughes is no stranger to the Girl Scout program. Home, young people and church are her interests.

The Council, by adding to the staff, and acquiring larger office space in the Ford-Ranier Building in Prestonsburg, will be giving more and better service to all volunteers in the organization. Mrs. Archer, executive director, said.

POPULOUS CIRCLE
Many of the forty million live within a huge circle having approximately a 300-mile radius from the heart of Kentucky.

The center of this circle, the Bluegrass and race horse section of Kentucky, is a tourist attraction itself.

Dr. Joe T. Hyden
DENTIST
Office Hours: 9 a.m. to 5 p.m. and by appointment.
Office in Municipal Bldg. at rear of Pure Oil Station
Martin, Ky. Telephone 3209

LOST — Large, solid white male cat, Roward. Call Mrs. Val Strahan, phone TU 6-3015.

WANTED — 4 men to assist in sales help in Floyd county. Must be over 24 years; car necessary. Apply at Modern Heating on Second St., Paintsville, Ky., from 8 to 10 a.m., Friday, Feb. 19.

FOR SALE — Two nice four-room houses on 2 acres land at mouth of Cow Creek on U. S. 23. Has large highway lot for business or expansion. Will sell all or separately. See or write Bert N. Porter, Emma, Ky.

RECONDITIONED PIANO — Small size. Guaranteed. Sacrifice at \$379.00. Terms. Can be seen in this community. Bill Duff, 502½ Wolford St., Pikeville, Ky.

KENTUCKY ATTRACTIONS

In the west is Kentucky Lake, which attracts over three million people annually, with its two state parks. For those who like mountains, there are in the east and southeast Cumberland Falls, Pine Mountain, Natural Bridge and Lake Cumberland State Parks, and Cumberland Gap National Park. Mammoth Cave in west central Kentucky draws about half million people annually.

Floyd County Times, Feb. 18, 1960

**TACKETT INJURED
IN MINE ACCIDENT**

Woodrow Tackett, of El Hat, suffered a broken back Saturday while working in a mine on Bryant Branch. He was taken to the McDowell Memorial hospital but later removed to Good Samaritan hospital, Lexington. His condition is not critical, it was said.

TIMES WANT

Al-Anon Family Group of Prestonsburg, Ky. Meetings Third Saturday Each Month, 8 p.m. For information call TU 6-650 or TU 6-2137

HERE'S WHERE YOU GET YOUR



**BEST BUYS
FOR BETTER MEALS!**

Nunnery's Self-Service Store under the new management of Virgil and Desama Warrix, offers not only quality food at low prices but a good old friendly service with a smile.

Specials for FRIDAY and SATURDAY, Feb. 19-20

- GOOD GROUND BEEF lb. 49c
- SLICED BACON 3 lb. 1.00
- CANNED BISCUITS 10 cans 99c
- MAXWELL HOUSE COFFEE lb. 69c
- Good Slab BREAKFAST BACON 1/2 or Whole... 29c
- PORK END ROAST 43c

**NUNNERY'S SELF-SERVICE
STORE**

Under the New Management of
Virgil and Desama Warrix

Nunnery's Corner, Graham and Third Avenue
Phone TU 6-3040 — Prestonsburg, Kentucky

WE DELIVER IMMEDIATELY

Our Historic Heritage

A Pictorial Review of East Kentucky

(No. 81 in a Series)



FIRST HABERDASHERY IN PRESTONSBURG

The first Prestonsburg haberdashery, under the firm name of Layne and Spradlin, was owned by Will H. Layne and Sam Spradlin. It was located on First Avenue opposite the Prestonsburg toll bridge. The building was destroyed by fire about 1916.

The town's first Southern Bell telephone exchange was located upstairs over the Layne and Spradlin store and was operated by Miss Ann Powers (Mrs. Ann Cox, Putnam, Va.) and Miss Mae Beam.

Shown here in the picture are James Trimble Layne (in shirt sleeves) and two unidentified men.

The First National Bank presents these pictures of our past as a bit of its friendly service and with the hope that they will contribute to your pleasure and profit.

THE FIRST NATIONAL BANK

Prestonsburg, Kentucky

see this big triple dresser
bedroom group by Bassett
at this unheard-of low price!



\$219.95 for

TRIPLE DRESSER,
BOOKCASE BED
AND LARGE CHEST

We'll leave it to you! Have you EVER seen a big 9-drawer triple dresser bedroom like this for such a low price? What's more, it's made by Bassett, the world's largest manufacturer of wood furniture. DuPont "Dulux" finish, unique tilting twin mirror of Pittsburgh plate glass, and dustproof center-guided drawers. A GREAT value... a BEAUTIFUL group!

ADVERTISED IN
LIFE
AND
LOOK



MALLORY STORES, Inc.

David, Ky. • Auxier, Ky.

FEDERATED STORE SALE

Martin, Ky.

Friday and Saturday, Feb. 19-20

MEN'S 100% NYLON YARN STRETCH SOCKS	25c
BLEACHED MUSLIN	4 Yards \$1.00
MEN'S LONG UNDERWEAR	CLOSE OUT \$1.01
ALL SUEDE SHOES DRASTICALLY REDUCED	

DIME STORE

E. P. Grigsby 5 & 10c Store

Martin, Ky.

Pop, 6-bottle carton	33c	Women's Panties, reg. 39c	sale price 17c
Salad Bowls, reg. 59c	only 33c	Leotard Tights, reg. \$2.98	special \$1.97
FAB (reg. 89c) plus 20-cent Ajax		Leotard Tights, reg. \$2.49	special \$1.47
\$1.09 value for 68c (1 to customer)		Candy, 1 lb. pkg.	19c
		Men's Shirts, long sleeve, reg. \$2.98	99c

Page 6, Sec. 1 — Floyd County Times, Feb. 18, 1960

Times have changed! The income of the average family today is spent far differently from the money grandfather brought home.

TAX RETURNS

May's Sign Shop, Across Street from Bus Station.
GEORGE W. SIZEMORE

—7—
(Continued from Page One)
makes a drastic break with the depressing pattern of the past and, I think, embarks on a new and better day," Gov. Combs said.

Farmers in southern states buy a half billion dollars worth of fertilizer and lime each year.

Robert Hall, 87, Dies At Harold Residence;

Robert Hall, 87, of Harold, died at 4 a.m. Wednesday at home. Death was due to the infirmities of old age. He was a retired farmer.

Mr. Hall was a son of Elijah and Rissie Blankenship Hall. He was twice married, his first wife, Rebecca Harvey Hall, preceding him in death. His second wife, Polly Younts Hall, survives. He was a member of the Church of Christ for 50 years.

Surviving sons and daughters are L. B. Hall, Pekin, Ind., General Hall, of Honaker, Elijah Hall, Weeksburg, Nasby Hall, of Olive Hill, Robert Hall and Oliver Hall, both of New London, Ohio, Kellard Hall, Southgate, Mich., Mrs. Mandy Newell, Germantown, Ky., Mrs. Helen Stapleton, Wakeman, Ohio, and Mrs. Hulda Lawson, of Honaker. Surviving brothers are Rev. Will Hall, of Harold, Rev. Emory Hall, of Betsy Layne, K. P. Hall, Beckley, W. Va., and Walter Hall, Pekin, Ind.

Funeral rites were conducted today (Thursday) from the home, the Rev. Laska Marshall officiating. Burial was made in the Harvey cemetery at Honaker under the direction of Hall Brothers Funeral Home.

—4—
(Continued from Page One)

jured in this county as a direct result of road conditions. Joe Wheeler Burnett, of Cow Creek, was hurt Saturday night, suffering broken ribs and severe bruises, when a truck he was driving was hit on a curve on South Lake Drive here. James W. "Red" Hazelet suffered a broken leg Tuesday when a jeep he was driving toward his home on Abbott Mountain from Paintsville skidded on ice, near East Point, and left the highway. Both men are in the Prestonsburg General Hospital. Jack Osborne, of Hueysville, sustained head injuries when his truck left the highway on a curve near Martin. He was treated at the Beaver Valley hospital, Martin.

Howard Perry, of Prestonsburg, was reported at the hospital here with frozen hands and feet suffered while attempting to extricate his car from a ditch.

Ditched autos and trucks were common spectacles in the area, and many cars stalled on the ice after having been parked on snow-covered and icy streets here.

The frozen, snow-covered body of Oakley Workman, 46, was found Sunday about 1,000 feet from his rural home near Whitehouse. Coroner Dana Harless said Workman's death was due to overexposure, and there was no evidence of foul play. The coroner said the body was found along a path, which led to Workman's home, just across the Johnson county line in Lawrence county. Harless said Workman had left home to visit neighbors Saturday evening, and apparently collapsed on the return trip about 7 p.m. Workman was married and the father of three children.

The funeral of B. P. Friend, former Prestonsburg man who died in Franklin, Tenn., was postponed from Sunday till Tuesday because of road conditions.

The depth of the snow and the accompanying icy temperatures were not anticipated by the weatherman and hundreds of Eastern Kentuckians were caught away from home. A warning issued by the National Safety Council urged motorists to stay off the highways unless for emergency driving in a 200-mile radius of Knoxville, Tennessee.

Saturday, Sunday and early Monday morning, traffic was practically at a standstill on U. S. 23 as well as other mountain highways. When traffic did get moving there was a heavy stream of vehicles moving north and south. Most drivers heeded warnings from State Police to proceed cautiously.

Unusual for a snowfall of this kind, heaviest here, it was said, since 1947, was the absence of power and telephone service interruptions. The Kentucky Power Company and Southern Bell Telephone Company attributed this to the fact that the snow was dry and did not cling to the wires.

There was a problem connected with the snowfall, though, according to Byron Simpson, Paintsville, manager of the telephone company. Since a great number of people were away from home, a rash of calls swamped the local exchanges in the area, and Simpson's office asked the public in a broadcast over WSIP radio station, Paintsville, to limit time on calls.

One side effect of the icy road conditions was the substitution of ambulance service for private car or taxicab service. Most funeral homes have 4-wheel-drive vehicles, and one funeral director made nine trips Saturday and eight Sunday for people at hospitals or other places who were unable to procure conventional transportation service.

—1—
(Continued from Page 1)

HOLD FAST—HELP IS ON THE WAY!

This winter has been a particularly trying one for most of us folks. We've watched television sinuses drain and hammers pound the pain into heads till we feel like we've been sitting in on an autopsy. But maybe the Federal Trade Commission will save the day, if it isn't already too late for some of us who are on the squeamish side.

Lest some of us dash out the door, screaming, the FTC has warned all and sundry that what you see on television commercials ain't necessarily so.

That toothpaste that makes that nice, clean streak across the stain left by the smoking machine doesn't remove all tobacco stains, FTC says. Nor does the other kind provide that "invisible shield." Moreover, that demonstration of a razor shaving sandpaper doesn't mean much, even if any of us poor blokes did have a sandpaper beard. FTC says it has evoked the admission from the advertising agency that real sandpaper isn't used. Not because sandpaper couldn't be shaved (if it needs it)—oh, no; just because the television lens do not record the variations between real sandpaper before and after a bout with the razor.

(Now we learn that one incredulous soul tried plain water, and did as well shaving sandpaper as he did when he used that certain brand of shaving lather. The record does not say anything about the comparative condition of the blades used with and without.)

The FTC is pinning down on the boys all along the line. These "flavor buds" in a certain brand of oleo are under attack, and FTC takes a rather dim view of that demonstration of strong and weak aluminum foil and of the view from certain car windows, and so on.

Perhaps, after all, the dear gullible American public will be taught that even the time-honored "seein' is believin'" isn't infallible. They got to me just in time to save me from trying to shave with three strokes of the razor, which is par for the TV course.

But to this good day they haven't cleared up this matter of what is a "thinking man's filter" and a smokin man's taste."

PARKS IN ALL REGIONS

Roads radiate from this hub into whatever type of landscape the vacationer prefers—mountains, flatland, lake regions, forests. Kentucky's 32 parks and shrines and seven big fishing lakes are distributed among all its geographical areas. Distances tending east and west are the farthest, mostly under 300 miles from a central location; those north and south are mostly short drives of less than 200 miles.

SUBSCRIBE FOR THE TIMES!

WARNING

Check your birth month for renewal of your driver's license. You now renew in your birth month and not your birthday. We have several that expired in January, 1960, that have not been renewed.

HENRY STEPHENS
Circuit Clerk

2-18-21.

SAVE AT PELPHREY'S

HOMOGENIZED MILK	79c
Per Gallon	
Coffee, Maxwell House, lb.	67c
Flour, 25 lbs.	\$1.59
Meal, 25 lbs.	89c
Potatoes, 50 lbs.	\$1.29
Lard, 8 lbs.	\$1.05
Bread, 2 for	31c
Biscuits	10 cans 89c

Don't forget MAGIC PEARL
the good flour

PELPHREY'S GROCERY

Only One Prestonsburg Location—405 N. Lake Drive
Prestonsburg, Kentucky

NOTICE

BIG SANDY READY-MIX CONCRETE, Inc.

(Formerly Moore Ready-Mix Concrete, Inc.)

offers builders of the area the facilities of its plant.

For concrete telephone:
Paintsville 1591

Prestonsburg TU 6-6061

At night call Leonard B.
Vice, Supt.
TU 6-2449

RENAULT Dauphine



COMPLETE WITH HEATER AND DEFROSTER

DELIVERED FOR ONLY

\$1695.--4 C.V. \$1395.

HUGHES MOTOR CO.

PRESTONSBURG, KENTUCKY

Phones TU 6-2170 and TU 6-2180

Cadillac — Pontiac — Renault —
Jeep and GMC Trucks

STRAND THEATRE

SUNDAY..MONDAY



Body BRIGITTE Beautiful BARDOT in

The Bride
is much
too beautiful

with LOUIS JOURDAN
MICHELINE PRESLE

ALLSAX RELEASE

The screen's most talked about actress in her newest film hit!

TO SHOW CANCER FILM

Mrs. Roy Souleyrette, county chairman for the Cancer Drive, announces that a film on cancer will be shown by Ted R. Poor, representative of the American Cancer Society, in the Wheelwright Woman's Clubroom on Wednesday, March 2, at 7:30 p.m. All club members, as well as anyone else who is interested in seeing the film, are invited to attend. There is no charge, and Mrs. Souleyrette hopes to see a large turnout for this very important film.

SARAH JANE SEWING SHOP

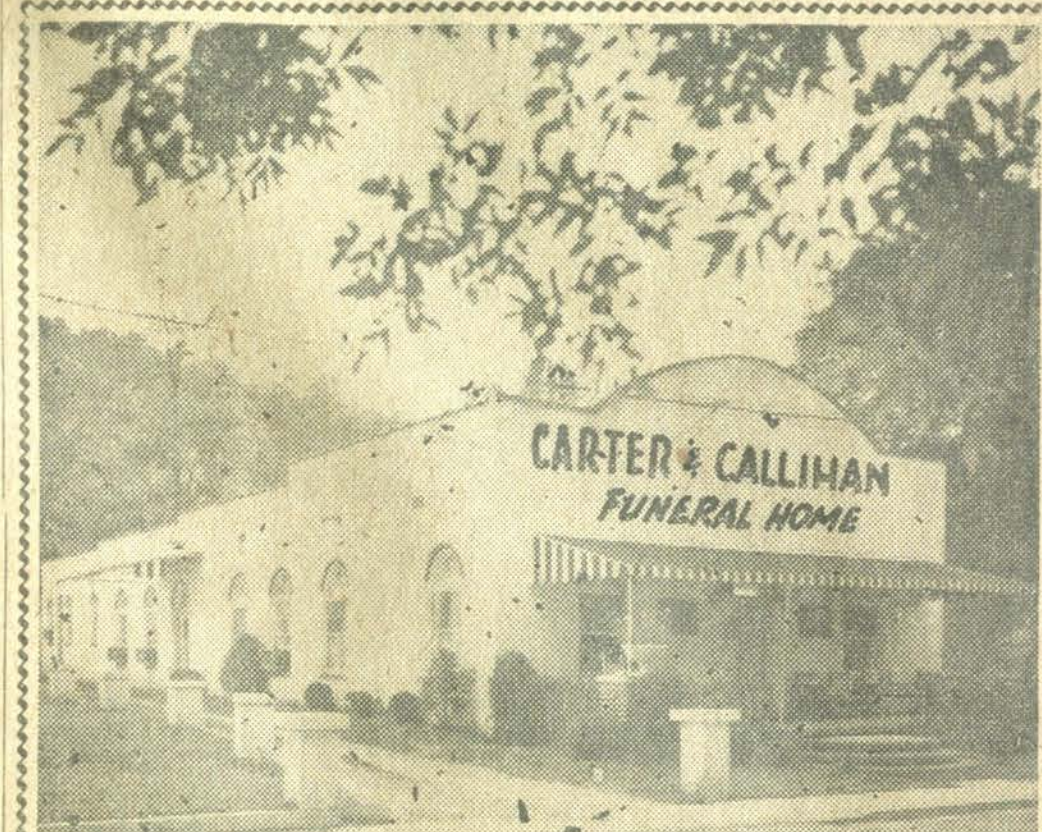
Necchi-Elna Sales & Service

Brother Sewing Machines
Prices start at \$69.95

Call 2101 for home demonstration

ALL KINDS OF SEWING

Located rear of Horn's Market
Porter Addition, Prestonsburg



Floyd county's finest, most complete, best equipped and oldest funeral home. Complete in every detail—family room, chapel and organ for your convenience. Your inspection of the home built for funerals is cordially invited.

Although Carter & Callihan have expanded in size... added modern equipment over the years... they still render the same friendly, personal service.

Carter & Callihan Funeral Home

Arnold Funeral Home
PRESTONSBURG, KY.



Ambulance Service — Anywhere — Anytime

Member, Kentucky Funeral Directors Burial Association. Eligible to service all burial policies.

Phone TU 6-2555 or TU 6-3081



USED CARS

- 1959 CHEVROLET Impala 4-door hardtop, with automatic transmission.
- 1959 PONTIAC 2-door Star Chief, sport sedan, all power, low mileage.
- 1959 RENAULT 4-door, very low mileage.
- 1958 FORD FAIRLANE 4-door hard top, fully equipped.
- 1957 PONTIAC 4-door hard top, Star Chief, all power and air conditioning.
- 1957 FORD Custom 300, 2-door with Ford-O-Matic.
- 1957 CHEVROLET Bel-Air 4-door hardtop. Extra nice, low mileage.
- 1956 PONTIAC 4-door Star Chief.
- 1956 CHEVROLET 4-door Bel-Air. V-8 motor, standard transmission.
- 1956 PONTIAC 870, 4-door hard top.
- 1955 PLYMOUTH Belvedere V-8, 4-door.
- 1955 PONTIAC 4-door 870.
- 1955 PONTIAC 2-door 870, low mileage, hydramatic transmission.
- 1955 CHEVROLET 2-door Bel Air 6-cyl., standard transmission.
- 1954 FORD Fordor. 6-cyl., standard transmission.
- 1953 JEEP. Heater and floating front hubs. Only \$595.

USED TRUCKS

- 1959 GMC Deluxe 1/2 ton pick-up.
- 1957 CHEVROLET 1/2-ton Pick-Up. V-8 motor, deluxe cab.
- 1956 FORD 1/2 ton pickup V-8 motor, new tires.

NEW TRUCKS

- GMC 2 1/2 ton heavy duty.
- WILLYS 4 wheel drive pickups and 4 wheel drive station wagon.

HUGHES MOTOR COMPANY

Cadillac — Pontiac — Renault — Jeep — GMC Trucks

Phones TU 6-2170 and TU 6-2180

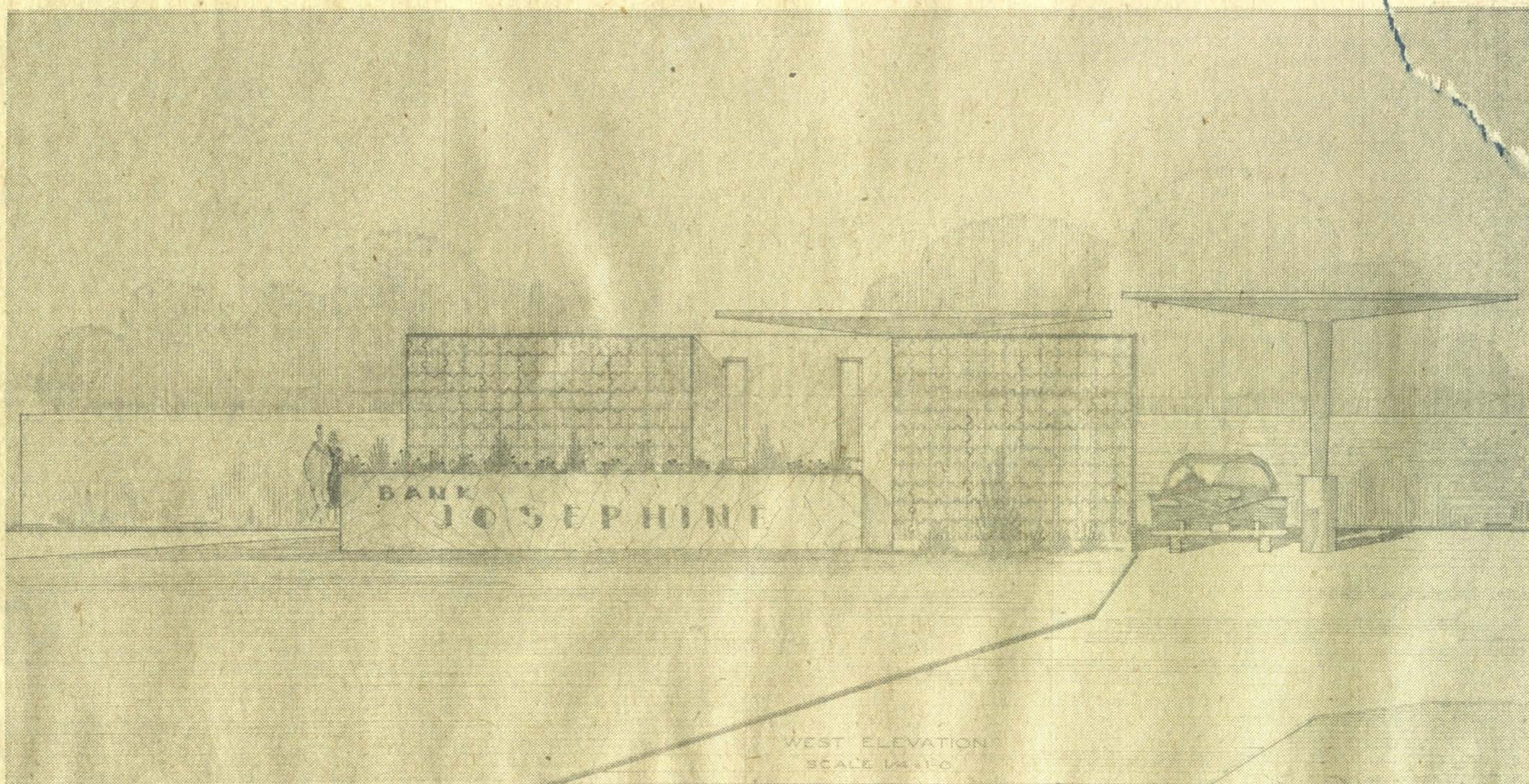
Prestonsburg, Ky.

Coming Soon...

ALLEN DRIVE-IN BRANCH BANK

Of THE BANK JOSEPHINE

The Bank Josephine, First and Oldest in Floyd County, Is Again FIRST In Offering Drive-In Service



An Artist's Conception of the New Allen Drive-In Branch Bank

A New Service in Modern Progressive Banking

The Allen Drive-In Branch Bank is being offered the public in recognition of a need in our fast-growing, rapidly expanding area of service. It is another step with you in the march of progress.

All the banking facilities of the present bank, The Bank Josephine, will be found at this air-conditioned drive-in branch. The transaction of drive-in business will be found to be completely convenient and if you desire you may walk-in for the same service offered at any financial institution.

In addition to conventional interior banking facilities, the Allen Drive-In Branch Bank will have a night depository and a day-time depository. The day-time depository will feature the latest in automatic banking windows. Voice contact between the customer in his car or truck and the teller behind his window is maintained through the use of amplified microphones. A push-button device exchanges deposit and receipt without hand-to-hand contact. The transaction of business will be practical, convenient and easily performed.

THE BANK JOSEPHINE

"Where EVERY Customer Is Important" . . . Member Federal Deposit Insurance Corporation

Prestonsburg, Kentucky

FLOYD COUNTY BOARD

Of

REGISTRATION and PURGATION

List of Voters Submitted for Publication and Purgation

PRESTONSBURG No. 1 — Ella Baker, Jasper Baker, Mary Baker, Mrs. J. E. Ball, Alex Belovich, Elmer Blackburn, Gene Boyd, John Andrew Branham, Mrs. John Andrew Branham, Marion Burchett, Jay Cantrell, Donald W. Claypool, Bascom Coburn, Hazel Coburn, Mary Coburn, Helen Cooley, Gilbert Crabtree, Henry Crabtree, Johnny Crabtree, Thelma Crabtree (Reg. as Thelma Meade No. 55), A. J. Davidson, Jr., Billy Farmer, Beatrice Goble, Helen Goble, John Edward Goble, Josephine Goble, Ned Goble, John N. Griggs, Barbara Hall, Radford Arnold Hall, Emma Louise Hardin, Elizabeth Harris, R. N. Harris, J. W. Herald, Eugene Hicks, Hansel Ray Hicks, Virginia Hollowell, Katherine Howard, Bill Hunt, Ual Joseph, Edith Laferty, Ralph Martin, S. M. May, Billy Miller, Johnny B. Miller, Bishop Morrison, Martha Nelson, (Dup-Purge old card), Mildred Nelson, Edith Patrick, Bess Patton Susan Pfeiffer, General P. Perry Lizzie Perry, James D. Petrie, Victor D. Petrie, Phillip Price, Alice Radliff, Joyce Radliff, Garr Reynolds, Glenn Rogers, Fred Saunders, Elizabeth Carol Scott, Willard Setser, Bill Shepherd, Bird Shepherd, Emma Jean Sirkle, Raymond R. Sirkle, J. P. Sizemore, Denver Stone, Willie Stone, Mrs. Effie Smith, Robert Henry Stanley, Edward Stephens, Marie Stephens, Robert Stephens, Jr., Ballard Sturdivant, Garland Vaughn (Dup-Purge old card), Alta Waddle, James Walters, William David Webb, Curtis Wells, Gladys Wells, Hiram Wells, John Wells, Ida Woods, Mrs. Katherine Woods, Betty D. Worthington, Warren Worthington, Herman Wright.

Elizabeth F. Keathley, Frank Keathley, Levi Keathley, Tom Keathley, Mrs. Tom Keathley, C. A. Kidd, Earl Kidd, Ida E. Kinney, John Lee Kinney, Jimmy Layne (Purge old card), Mabel Mabel, Raymond A. Mabes, George Martin, Hallard Martin, Adrian Perry, Nannie Reynolds, Carl F. Roberts, Gladys Roberts, Jack Scott, Dorothy Sexton, Lizzie Sexton, Herma L. Skeens, Delia Solne, Emma Jean Stone, Harlan Stone, Jackie Stone, Raymond Stone, Henry Tackett, Henry Taylor, Arthur Vanover, Opal Vanover, Donald Whitaker, Doris Whitaker, Eva Whitaker, Howard Whit, Vina Whit.

Granville Stanley, Nannie Stanley, Lydia Terry, Samuel Terry, Richard Turner, Rissie Trusty, Ruther E. Turner, George Waddle, Thelma Waddle, Earnest Ward, George Wolfe, Winnie Wolfe, V. N. Woolley, Betty Ann Yount, John H. Yount, Herbert R. Yount, Gloria Yount, Thelma Yount.

Mathews, Alma Jean Meade, Colie Moore, Winfred Moore, Rosa Newlin, Elza Pennington, Maxie Reynolds, Joyce Ann Vance, Norman Walker.

(Continued on Page 4)

NOTICE

To people of the Melvin Telephone Exchange area which includes Melvin, Buckingham, Beynsville, Halo, Jack's Creek, Bypro and Weeksbury; also people living in Golf Course Hollow, Branham Hollow and Hall Hollow, outside the City Limits of Wheelwright:

Our business office is located beside the Bypro Post Office in Wheelwright Junction. It is now open for the purpose of receiving applications for telephone service which will be provided by our new dial exchange at Melvin.

We welcome you to stop by and talk with us about the new service and file your application.

Your Telephone Company
2-11-4t.

Administrator's Notice

My name is Edith Terry. I have been appointed administrator of the estate of the deceased McKinley Parrigan. If you have any bills before Jan. 9, 1960 against the deceased, then contact Edith Terry, Wayland, Ky., or if you owe the deceased McKinley Parrigan, please contact Edith Terry, Wayland Ky. Administrator of the Estate of the deceased, McKinley Parrigan
2-11-2t

NOTICE

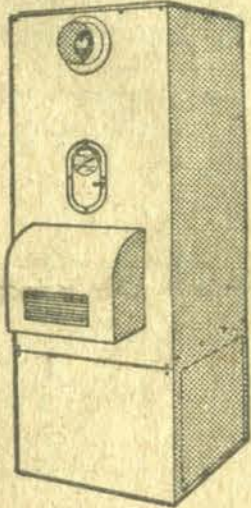
The Floyd County Board of Education will accept bids for certain materials for installation of vented heaters and maintenance of bath rooms and lavatories, etc., at its regular meeting March 1, 1960, at 1:00 o'clock. A complete list of these materials may be obtained from the office of the Superintendent of Schools.

The Board reserves the right to accept the lowest and best bid on any and all items, or any combination of items, and reserve the right to reject any and all bids.

Floyd County Board of Education
Virgil O. Turner,
County Superintendent
2-11-3t.

At Pioneer Memorial State Park, Harrodsburg, is a replica of the first permanent white settlement in Kentucky.

**Forced
Air
Heating**



Completely
Installed

Built and Backed by



- 10-year guarantee on furnace.
- One-year free service.
- Spare parts in stock.



JIMMIE GOBLE
Phone Allen 2456
ALLEN, KY.

**Circle Of Nothing
Is Cynthiana's
Civil War Relic**

Cynthiana's "Hole in the Wall" is not a blind tiger or modern-day speakeasy or any such nefarious dive.

It's a memento of the Civil War. Instead of being raided by police, Cynthiana's "Hole in the Wall" has been framed and preserved.

It's a three-inch hole that was torn in the upper part of an old building by a Civil War cannon ball.

During the second Battle of Cynthiana in 1864, writes Mrs. John Harris in The Cynthiana Democrat, Union forces were entrenched on heights now known as Battle Grove Cemetery. They sprayed the town with grape shot and cannon balls, trying to turn back Gen. John Hunt Morgan's raiders.

The old building with the hole resulting from this fight stood for many years with its honorable battle scar a mute reminder of the war. In 1929 the building was razed to make room for a new funeral home. More than 100 years old and built of heavy hewn timbers, fastened together with wrought iron nails and wooden pegs, the building was a Cynthiana landmark.

So H. Clay Smith and Dave R. Rees, owners of the new funeral home, thought the hole deserved a place in Cynthiana history. The battle scarred piece of the building was removed, its back reinforced and a frame built around it. Smith plans to have the framework refinished and an appropriate plaque made for presentation to the Harrison County Woman's Club.

It's probably the only hole ever preserved for historical reasons.

**Board eulogates
State Vehicle
Use By Personnel**

Frankfort, Feb. 13 (Spl.) — Gov. Bert Combs has established a transportation board to regulate the use of state-owned vehicles.

His executive order said "No state-owned vehicle shall be used for other than official state business." Use of the vehicles was limited to officers and employees designated by state law and to others certified by the commissioner of finance and recommended by the new board.

This body is composed of the commissioners of the public safety, economic security and highway departments.

Combs said "Regulation of the use of state-owned automobiles has long posed a problem for state government, in Kentucky and elsewhere. The problem has been how to confine their use to strictly state business without impairing the efficiency of state officers and employees using such vehicles.

"I recognize that despite the best of controls, it is difficult to prevent abuse. The best we can do is to take every precaution possible."

Combs said the new board will have authority to consider applications for state vehicle use by state personnel, to recommend approval or disapproval, to investigate the use of such vehicles, and to rescind approval in case of abuse.

Walter L. Akers
of
Harold, Ky.

Candidate for Floyd County
Board of Education
Educational Division No. 5

**All Taxable Property
Must Be On Income Tax
Report, Scent States**

W. E. Scent, commissioner of revenue, reminds taxpayers that they are required by law to list all taxable property with their county tax commissioner between Jan. 1 and March 1.

Scent pointed out that it is to the taxpayer's advantage to see that all his property is listed. If the tax commissioner does not have knowledge of property and, therefore, does not have it on the rolls, such property will be assessed as "omitted property" and subjected to a 10 per cent penalty and interest at the rate of 1 per cent per month.

The commissioner cautioned taxpayers that the type of property most commonly omitted from the tax rolls is tangible personal property, such as merchants' inventories, professional and trade tools, business furniture and fixtures, farm livestock and machinery, and newly constructed or partly constructed buildings.

Scent added that many taxpayers do not realize the many kinds of intangible property that are taxable. He emphasized that every person should give his county tax commissioner a complete list of shares of stock, bonds, notes, accounts receivable, money in trust and in safety deposit boxes, money in banks outside Kentucky, annuities, and all other receivables and credits, whether secured or unsecured.

The first house built by a white man in Kentucky is the Dr. Thomas Walker House, Barbourville.

**New Deep Auger Mines
Reported in West Virginia**

State Mines Director Crawford L. Wilson said last week 1,095 new deep mines and 101 new auger mines were opened in West Virginia last year.

The state reported 1,257 new deep mines during all of 1958 and 31 new auger permits from August through December, 1958, 10 fewer than the number issued during the same period in 1959. Miners were not required to obtain auger permits prior to June, 1958.

Wilson said McDowell county led the state with 170 new openings, including 164 deep mines and six auger operations.

Second in deep mine openings was Fayette county with 152. Raleigh was third with 129. Raleigh was first in auger operations with 20 followed by Harrison county with 12.

No deep mine openings were listed in Ohio and Jefferson counties for 1959 but each listed one new auger operation. A permit for the state's first mushroom mine was issued in Marshall county.

Other counties reporting 10 or more new deep mine openings were Boone, 23; Greenbrier 64; Harrison 43; Kanawha 67; Logan 39; Mercer 23; Mingo 54; Monongalia 46; Nicholas and Preston 55 each; Randolph 15; Taylor 12; Upshur 13; Webster 17 and Wyoming 55.

NOTICE

The Floyd County Board of Education will receive bids for hauling children on the Left Fork of Abbot for the months of March, April and May, to the bus line, the board to furnish insurance. The driver must be 21 years of age or over, and to be able to pass a physical examination.

The board reserves the right to reject any and all bids.

Floyd County Board of Education
Virgil O. Turner,
County Superintendent 2-11-3t.

KENTUCKY'S LOSS

No more. Enter Alaska into the union and Kentucky's distinction in fishing stream mileage vanished. Now the Bluegrass fishing writers have to say, "More miles of running water than any other state in the union, except Alaska."

JAMES E. ALLEN
WATER WELL DRILLING
Langley, Ky.
Phone Martin 3225

Floyd County Times, Feb. 18, 1960

For
Complete Coverage
All Forms of Insurance

See
Snodgrass Insurance Agency
"Dependable since 1906"
P. O. Box 187 Phone TRojan 4-2292
ALLEN, KENTUCKY



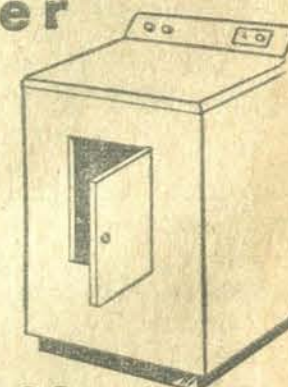
**Electric Dryer
Buyer Days**

Buy an all-electric clothes dryer

Satisfaction Guaranteed

... or your money back!

Electricity is your better way to dry clothes



Kentucky POWER COMPANY



**MUFFLERS
Tail Pipes
Clamps**

TOPS AUTO STORE



Here's Why It Pays To Use Top-Quality Seed

**Don't gamble ... start right with
Southern States Top-Quality Seed
Legumes and Grasses for Hay
and Pasture.**

- High germination
- Adapted varieties
- Low weed content
- Superior vitality
- A guarantee you can count on

When Southern States Top-Quality Seed costs so little and gives you so much, why take a chance on anything less?

1 Take hay, for example. Top-Quality Seed for hay represents only 7% of the total production cost. A recent Cornell University study proved it.

2 Bigger yields from Top-Quality Seed help cut production cost—may make the difference between profit and loss. The Cornell study proved that hay yielding 2.6 tons per acre cost 30% less per ton to produce than hay yielding 1.6 tons.



See Your Southern States Cooperative Service Agency



**A
Gratifying
Assurance**

SERENITY

You can depend on us to have the final tribute to your loved one performed with reverence and utmost dignity.

Lasting Memorials for
Those you have loved

MOORE
Funeral Home

Operated by Franklin Moore and Henry C. Hale
Phone TU 6 - 3010 Air-Conditioned Ambulance Service
Prestonsburg, Ky.



WE THE TRADERS... WE want to buy old trap gold. Bring or mail to us, we pay cash. WRIGHT JEWELERS, Prestonsburg, Ky.

SAVE \$ \$ - On electric razors, Remington, Ronson, Schick and Sunbeam reduced up to \$10.00. WRIGHT JEWELERS, Prestonsburg, Ky.

For All Your Heating, Cooling and Metal Work Needs, call JIMMIE GOBLE, Allen 2456

BABY - Have baby shoes bronzed at WRIGHT JEWELERS, Prestonsburg, Ky.

FOR SALE - Engines, auto and trucks. Keene Garage & Welding Shop, Pikeville, Phone GE 7-7236.

ARMY SURPLUS STORE on First Avenue, Prestonsburg, Ky. Clothing, Shoes and Camping Supplies.

SERVICES - Crankshaft grinding, engine rebuilding, bearing sizing. Keene Garage & Welding Shop, Pikeville, Phone GE 7-7236.

FOR SALE - Practically new 3-room house, Carport, Utility building, yard fenced, lot 50 x 240 feet.

Only 1.00. Use our Lay-A-Way Plan. Only \$1.00 will reserve your purchase. Pay only \$1.00 weekly.

PIANO BARGAINS - All styles and finishes. For the best piano buy in the Tri-State see ZWICK'S, Ashland, Ky.

BOOKS FOR SALE - (1) Four Men of the Cumberland, Pamphlet, Pictures, \$1.00.

FOR SALE - ZENITH HEARING AIDS. ALL NEW, FULLY GUARANTEED BY ZENITH.

DIAMONDS - Save on diamonds. 14K gold sets as low as \$29.50. Single diamond rings as low as \$4.95.

NEED FULLER BRUSHES? - Call 2642, Prestonsburg, between 8 p.m., and 7 a.m.

FOR SALE - Three young Angus bulls. Registered. Willie Turner, Huysville, Ky.

NEW AND USED FURNITURE - Cash Furniture Store, Opposite Floyd County Times.

WATCH REPAIR - If you want the best job, bring watch repairs, and jewelry repairs to WRIGHT JEWELERS.

DRIVER LICENSE - Fishing license, credit cards, draft card, etc. Put in guaranteed lifetime plastic.

FOR PLUMBING or installation and repair of floor furnaces call Woodrow Salyers, phone TU 6-2441, Prestonsburg.

FOR SALE - Good used furniture. Dining room, bedroom furniture and other items. Phone TU 6-6501 after Jan. 8, 1960.

PROTECT PICTURES - Have your pocket pictures put in lifetime plastic. Guaranteed forever.

FOR SALE - New home, Mayo Addition, 6-rooms. Carport. Everything built-in. Call TU 6-2251, Prestonsburg.

PRICED TO SELL - Modern two-bedroom home, large closets, living room with fireplace, built-in kitchen, utility room, river bank lot in Prestonsburg.

FOR RENT - Furnished and unfurnished apartments. Also 3-room house for rent. T. E. Nealey, Prestonsburg, Ky. Phone TU 6-2057.

FOR SALE - Two bedroom house, 3/4 mile from Prestonsburg on Auxier road. 75x155 lot, Thurman Clark's property. Priced to sell. 1-7-tf.

WINTERIZE YOUR CAR! Heater Hose, Radiator Hose, Thermostats, Cold Solder, Ignition Parts, Spark Plugs, Generators, Carburetors, Batteries, 6 volt and 12 volt. Donahoe's Tops Auto Store, Prestonsburg, Ky.

EASE COLD MISERY 3 DOSES Happy results in ONE HOUR or your 59c back at any drug store. A box of BQ plus 6 contains 24 tablets - 12 white, 12 brown. Take one of each every half hour until 3 doses are taken.

FOR SALE - 5-room house with bath in Mayo Addition. Phone TU 6-2426. 2-7-2t-pd.

SEAMSTRESS - Mrs. Chester W. Hale, phone TU 6-6451, Prestonsburg. 12-23-tf.

PAINTING and WHITEWASHING Free estimates. Contact Paul Stone, 31 N. Lake Drive, Prestonsburg. 2-4-3t.

FOR RENT - Furnished apartments and sleeping rooms. Phone TU 6-8081, Prestonsburg. 2-4-4t-pd.

FOR RENT - 5-room furnished apartment on Lake Drive. Newly decorated. Mrs. B. L. Sturgill, Phone TU 6-3005, Prestonsburg. 2-4-3t.

BROWN'S MUSIC STORE, Prestonsburg, Ky. Phone E. B. Brown, TU 6-2148.

FOR SALE - House 5-rooms app. 2 acres good water. Gas available. House is now vacant. 3.7 miles from Prestonsburg on Middle Creek. Priced for immediate sale. See Henry Montgomery at Service Barber Shop or at home. 2-11-3t-pd.

FOR SALE - Luzier's fine cosmetics. Phone TU 6-2568, Mrs. C. J. Blair, Prestonsburg. 2-11-tf.

FOR SALE - Two small trailers, equipped with shocks, turn signals, and stop lights. See J. A. Rector, Wayland, Ky. 2-11-2t-pd.

PORTRAITS and LANDSCAPES - Painted by the Joy Art Studio. Why not a portrait of your favorite loved one done in oil paint? For more information, phone Allen, Ky., TR 4-2238. 2-11-8t-pd.

FARM FOR SALE - 72 acres. 4-room dwelling. Outbuildings. Tobacco base. 15 acre hog field. Priced to sell. Located: Lick Fork Jennie's Creek. See Edgar Auxier, or call 614-W, Hager Hill, Ky. 2-11-2t-pd.

HOUSE FOR RENT - 5 rooms and bath. Floor furnace. Call Mrs. Faul Francis, phone TU 6-2450 or TU 6-3032, Prestonsburg, Ky. 2-18-3t.

No Money Down on Swift Homes. For complete details on how to obtain the Swift Home of your choice, call Carl Wise, phone TU 6-9821, Prestonsburg, Ky., representative for Lexington Swift Homes.

FOR RENT - Two unfurnished apartments; 3 rooms and bath upstairs, with porch; 4 rooms and bath, porch, downstairs. Mrs. Joe P. Tackett, Prestonsburg, phone TU 6-2616. 2-18-2t.

FOR SALE - 8-room house with bath, business in front; 3-room chicken house. Approx. 3 acres land, on highway. \$11,000. Mary L. Hall, McDowell, Ky. 2-18-2t.

For Board of Education We are authorized to announce BILL BLAIR of Weeksbury, Ky., as a candidate for the Floyd County Board of Education, Educational Division No. 4. 2-11-4t-pd.

Rheumatic Pain Gone In 8 Hours "For years I had rheumatic pains in my shoulders, legs and ankles; when I walked I would flinch with agony, but recently I got RUGON and the pains began leaving my body in 8 hours. Now I am entirely free of pain and praise RUGON to the sky. This is a true, sincere testimonial. RUGON is helping so many victims of rheumatism and neuritis because this NEW Liquid Formula contains Three Wonderful Ingredients. Not a tablet or capsule. RUGON goes to the very source of pain almost at once and costs but a few cents a day to take. So don't go on suffering. Get RUGON at W. A. Rose Drug Co.

MASTER COMMISSIONER'S SALE FLOYD CIRCUIT COURT

On the North by the lands of Joe Dillon. On the East by the lands of Jennie Caldwell. On the South by the lands of James S. Layne. On the West by the lands of Morgan Layne, containing 75 acres more or less and which the said James S. Layne inherited from his mother Serena Layne, now deceased.

By virtue of a judgment and order of sale of the Floyd Circuit Court rendered and entered at the February term, 1960, in the above styled cause I shall proceed to offer for sale at the Courthouse door in Prestonsburg, Kentucky, to the highest and best bidder, at public auction, on the 5th day of March, 1960, at 10 o'clock a.m., same being the first day of the regular term of the Floyd County Court, upon a credit of six months, the following described property, to-wit:

(a) Lot No. Three of the division of real estate of Serena Layne, situated in Toms Creek, a tributary of Big Sandy River. Beginning at a buckeye on the South side of Toms Creek, a corner to Lot No. Two; thence with line of Lot No. Two reversed N 8 30 E 269 feet, crossing the bottom and creek to a black walnut; thence up the hill N 39 45 W 362 feet N 49 W 137 feet to a black oak on the point; thence up with center of the point N 26 15 W 193 feet N 36 15 W 161 feet N 30 30 W 220 feet to a black oak; thence leaving line of Lot No. Two and running up the point with line of Lot No. One reversed, N 5 E 299 feet; N 8 W 151 feet N 10 E 175 feet; N 14 15 E 199 feet; N 30 E 120 feet to X on a rock on top of the hill; thence leaving line of Lot No. One and running along the main ridge between the Drop Lick Fork of Ivy and Toms Creek, N 71 E 470 feet to an X on a rock; S 81 E 244 feet; N 84 E 300 feet to a hickory and sugar tree; N 45 E 107 feet to a stake; thence leaving the ridge and down the point with line of Lot No. 4, S 26 45 E 400 feet to a double maple on the point; thence down with the center of the point, S 15 E 162 feet; S 14 E 162 feet; S 14 E 248 feet to a black oak; S 12 45 192 feet; S 14 45 W 177 feet to a hickory; S 27 E 99 feet S 22 30 E 284 feet to a hickory, S 3 15 E 135 feet S 4 15 E 350 feet to a black walnut on the south bank of Toms Creek at the mouth of Bunk's Hollow; thence up said hollow S 4 10 W 1950 feet, passing a red-bud, black walnut, chestnut and small beech to a stake on top of the main ridge; thence along the top of the ridge S 88 30 W 140 feet; S 53 30 W 244 feet; S 81 15 W 488 feet; thence leaving the ridge and running down the point with line of Lot No. Two reversed, N 12 W 456 feet; N 21 15 E 121 feet; N 22 E 160 feet; N 10 E 198 feet; N 25 30 E 181 feet to a hickory; N 11 E 201 feet; thence leaving the point and the hill N 33 30 W 640 feet to the beginning, containing 77 acres, more or less.

A road, twelve feet in width extends through Lot No. Three, and is bounded and described as follows: Beginning at a stake, at the line of Lot No. Two, at the intersection with road through Lot No. Two thence up the creek, N 62 30 E 677 feet N 63 30 E 125 feet; N 87 E 150 feet to a stake in line of Lot No. 4. The above description represents the center line of the road and six feet on each side of same throughout the entire distance; it is located on said tract of land and as located, constitutes the road, twelve feet in width.

Being the same land conveyed to James S. Layne by E. S. Robinson Special Commissioner, by deed dated March 23, 1925, and which is duly recorded in Deed Book 95, Page 329, Floyd County Court Clerk's Office. (b) A tract of land, lying on the waters of Big Sandy River, and described as follows: Beginning on a black oak, at the north east corner of the graveyard; thence S 7 20 W 141 feet to a stake at the south-east corner of the graveyard; thence down the hill and on line to a water birch, at the mouth of the Camp Branch, S 9 10 W 930 feet to a stake at the river; thence up same S 74 E 71 feet; E 117 feet; N 77 35 E 73 feet to a stake at corner of Lot No. 10; thence with line of said Lot leaving the river, N 2 30 E 1115 feet to a stake on the point; thence up same S 62 25 W 28 feet; S 55 W 123 feet to the beginning.

Being a part of the same land conveyed to James S. Layne by L. D. Layne and others by deed dated December 13, 1928, which is duly recorded in Deed Book 109, Page 257. (c) A tract of land, lying on the waters of Big Sandy River described as follows: Beginning on the State Highway on the line of Jennie Caldwell and running with her line to Big Sandy River, (being the line of Lot No. One in the division of the estate of Lee Layne, deceased); thence up Big Sandy River with its lower water mark to a line between Lot No. Two and No. Three of said division; thence running across the bottom between Lots No. Two and Three to U. S. Highway No. Twenty Three; thence down the right of way of the said Highway No. Twenty Three to the place of beginning.

Being the same property conveyed to James S. Layne by W. M. James and Minerva James, his wife, by deed dated March 6th, 1948, and which is duly recorded in Deed Book 137, Page 446, Floyd County Court Clerk's Office. (d) An undivided one-eighth interest in and to a certain tract of land, located on Drooping Lick Fork of Ivy Creek and described as follows: On the North by the lands of Joe Dillon. On the East by the lands of Jennie Caldwell. On the South by the lands of James S. Layne. On the West by the lands of Morgan Layne, containing 75 acres more or less and which the said James S. Layne inherited from his mother Serena Layne, now deceased.

land, located on Drooping Lick Fork of Ivy Creek and described as follows: On the North by the lands of Joe Dillon. On the East by the lands of Jennie Caldwell. On the South by the lands of James S. Layne. On the West by the lands of Morgan Layne, containing 75 acres more or less and which the said James S. Layne inherited from his mother Serena Layne, now deceased.

(e) An undivided one-tenth interest in and to the oil and gas underlying those two certain tracts of land, lying on the waters of Big Sandy River and described as follows: Beginning on the top of the point just below the new residence of Moses S. Layne; thence a straight line down the hill and on the line of three cedars to the state highway; thence crossing same to the cross fence that leads to Big Sandy River at low water mark; thence up the river bank a distance of 420 feet to a set stone; thence an easterly direction and a straight line crossing the bottom and the State Highway and crossing the highway and to the foot of the point just below where the new residence stands; thence running along the north side of said state highway to the branch at or near the old residence of M. S. Layne; thence a northerly direction up the hollow to the top of the point to place of beginning.

Beginning at a point in the upper edge of the old county road on the line of May and Morgan Layne; thence up the graveyard point and with the said line to the line of Jennie Caldwell and with her line to James S. Layne, and with said line to the line of Clyde Layne; thence with said line to the line of Job Damron; thence with said line to the line of Lee Layne; thence with said line to the line of Mary Stratton; thence with said line on up the point to the top of the knob between Big Sandy River and Toms Creek; thence down the center of the ridge and down the point to a hackberry at the old county road, thence with upper side of old county road and crossing the point at back of M. S. Layne residence to a point in the upper edge of the old county road near an old barn site; thence crossing the branch with line of old county road to place of beginning.

Being the same property inherited by the said James S. Layne from his father, Moses S. Layne. (f) The oil and gas underlying those certain tracts of land located on the waters of Big Sandy River and described as follows: Beginning at a stake at the mouth of a drain; thence up the same S 78 E 97 feet; S 50 E 131 feet; S 1 30 E 51 feet; S 66 E 76 feet; S 40 30 E 76 feet; S 34 W 96 feet; S 85 45 E 88 feet to the mouth of a culvert and line of right of way of U. S. Highway No. Twenty Three; thence up with the same to the corner of L. D. Layne, thence with same crossing the bottom N 86 30 W 425 feet to a stake at the river; thence down the same to the beginning.

Beginning at a stake at the highway, a corner of Lot No. 4; thence crossing the bottom with Lot No. 4, reversed, N 83 W 690 feet to the river, thence up the river S 7 W 48 feet; S 11 30 E 710 feet to a stake at the highway; thence down the highway, N 45 W 15 feet, N 15 W 62 feet to the beginning.

Being a part of the same lands conveyed to James S. Layne by L. D. Layne and others by deed dated December 13, 1928, which is duly recorded in Deed Book 109, Page 257, Floyd County Court Clerk's Office. (g) The oil and gas underlying that certain tract of land, lying on Coldwater Branch of Big Sandy River and described as follows: Beginning at a stake in the upper forks of said branch, witness by a beech, bearing N 95 30 E 14 feet to the corner of Mary Stratton; thence with her lot N 35 15 E 1193 feet to a stake on a knob; thence with the ridge S 62 E 156 feet, S 36 45 E 203 feet, S 62 53 E 148 feet, S 64 43 E 278 feet, S 26 42 E 238 feet, S 26 05 E 173 feet; S 23 25 E 307 feet; S 26 15 E 112.5 feet; S 39 E 57 feet to a stake on the ridge between Loar's Branch, Sillers Branch and Coldwater Branch, S 19 W 131 feet, S 23 30 W 171 feet to a small hickory; S 27 W 176 feet to a stake on the high ridge between Coldwater and Hackworth Branch, S 81 30 W 60 feet S 89 30 W 185 feet to a hickory, S 65 30 W 283 feet to a black oak; thence leaving the ridge and down the hill N 37 20 W 1080 feet to a stake on a sharp point, about eighty feet above the falls; thence down the branch S 80 30 W 436 feet to the beginning.

Being a part of the same lands conveyed to James S. Layne by Tella Layne and others by deed dated February 12, 1943, and which is recorded in Deed Book 120, Page 135, Floyd County Court Clerk's Office. (h) The coal, oil and gas underlying those certain tracts of land, located on the waters of Big Sandy River and described as follows: Beginning at a stake in the east line of Wilda Farmer and north line of U. S. Highway No. Twenty Three; thence S 88 45 E 100 feet to a stake in line of said highway; thence leaving the line of said highway and running up the hill N 88 45 W 100 feet to a stake in the line of Wilda Farmer, thence down the hill with said line a distance of fifty feet to the beginning.

Lot No. Five in the division of lands of Serena Layne, deceased, beginning at a stake in the East

line of U. S. Highway No. Twenty Three and in line with a willow and corner of Lot No. four, in said division; thence with lines of No. 4, reversed, N 5 W ----- feet to a black oak on the hill side; N 4 W 191 feet to a white oak, N 1 30 W 45 feet to an ash tree on a steep; N 1 30 E 160 feet to a stake on a rock; N 1 50 W 221 feet to a small hickory, N 1 W 214 feet, N 9 15 W 175 feet to a stake two feet left of a hickory, N 1 50 E 217 feet to a stake on top of the ridge leaving lines of Lot No. 4, S 60 15 W 115 feet, S 73 W 196 feet to a hickory, S 48 81 feet S 61 30 W 47 feet, witness by a sugar tree, bearing N 53 W 9 feet and by a hickory, bearing S 33 W 10 feet, thence leaving the ridge and down the hill S 9 W ----- feet to a stake in East line of U. S. Highway No. 23; thence leaving the falls of deed, above mentioned and running with the east line of said highway to place of beginning.

Beginning at the corner of lot of George Hall, Jr., now line of Maud Dye on lower side of and in line of U. S. Highway No. Twenty Three; thence down the bank with the line of said lot to a stake at low water mark of Big Sandy River thence down the river at low water mark to a stake and corner to Lot No. 6 of hill land in division of the thence up the bank with line of lands of Serena Layne, (deceased) thence up the bank with line of Lot No. 6, reversed, to a stake in lower line of U. S. Highway No. Twenty Three; thence up with line of highway to the beginning.

Beginning at a willow and corner of Lot No. 4 in division of hill land, thence down the bank with Lot No. 4 and No. 5 to stake at the low water mark of Big Sandy River, thence down with low water mark a distance of fifty feet to a stake; thence leaving the river and running up the bank to a stake in the lower line of Mayo Trail; thence up with the same a distance of fifty feet to a stake; thence leaving the line of the Mayo Trail and down the bank to the willow, the place of beginning.

Being the same lands conveyed to James S. Layne by L. D. Layne and others by deed dated December 13, 1928, and which is duly recorded in Deed Book 109, Page 257, Floyd County Court Clerk's Office.

Also all of the personal property owned by James S. Layne at the time of his death. For the purchase price the purchaser must execute bond with approved sureties, bearing legal interest from the day of sale until paid and having the force and effect of a judgment with a lien retained upon property as a further security. Bidders will be prepared to comply promptly with these terms. Given under my hand, this 18 day of February, 1960. J. B. CLARKE Master Commissioner Floyd Circuit Court 2-18-3t. Cost of Adv. \$153.50

MASTER COMMISSIONER'S SALE FLOYD CIRCUIT COURT CR. 2786

Kate Williams, Plaintiff Vs. NOTICE OF SALE Eva W. Prater, et al., Defendants

By virtue of a judgment and order of sale of the Floyd Circuit Court rendered and entered at the January term, 1960, in the above styled cause I shall proceed to offer for sale at the Courthouse door in Prestonsburg, Kentucky, to the highest and best bidder, at public auction, on the 27th day of February, 1960, at 10:00 o'clock a.m., same being the first day of the regular term of the Floyd County Court, upon a credit of Six (6) months, the following described property, to-wit: Lying and being on the Right Hand Fork of Middle Creek, in Floyd County, Kentucky, set out and described in deed of conveyance from Ed Wright, et al., to Harrison Williams, et al., dated March 4, 1929, recorded in Deed Book 81, Page 219. Floyd County Court Clerk's Office to which reference is made for a more specific description of said property.

Second Tract: Located on Right Middle Creek, set out and described in deed of conveyance from Jack Patrick, et al., to Harrison Williams, et al., dated September 20, 1915, recorded in Deed Book 42, Page 442, Floyd County Court Clerk's Office, to which records reference is made for a more specific description of the property.

The purchaser may pay cash in lieu of execution of bond, if he so desires. For the purchase price the purchaser must execute bond with approved surety or sureties, bearing legal interest from the day of sale until paid and having the force and effect of a judgment with a lien retained upon said property as a further security. Bidders will be prepared to comply promptly with these terms. Given under my hand, this 6 day of February, 1960. J. B. CLARKE Master Commissioner Floyd Circuit Court (Cost of adv. \$25.50) 2-11-3t.

Plan special electrical outlet for major appliances such as the range refrigerator, dishwasher, washer, and dryer. Cumberland Falls of the famous Moonbow can be reached by Ky. 90 from both U. S. 25-W and U. S. 27.

FLOYD COUNTY BOARD OF REGISTRATION AND PURGATION

List of Voters Submitted for Publication and Purgation (Continued from Page 2)

NEW ALLEN No. 57 - Ted L. Akers, Mrs. Ted L. Akers, Delmer R. Baldridge, Hack Bentley, George Branham, Lucille Branham, Clara Brown, Marion Brown, Irving Childress, Eugene Colwell, Helen Colwell, James M. Davis, Waynoka Dyer Davis, Adrian G. Gunnell, Anna H. Gunnell, Columbus Jackson, Ella Lee Mathews, Joy Messer, Truman Messer, Leonard Ousley, Nan Ousley, Elinor Reese, Rev. Eugene Reese, Earl Spears, Pearl Spears, Lucretia Spurlock, Otis D. Spurlock, Clell Stephens, Geraldine Stephens.

SEIZEMORE No. 58 - Alice Arnold, Donald Boggs, Allie Burkhardt, John T. Chaffins, Birch Mae Collins, Joan Dyer, Edgill Hicks, Melda Hicks, Billie Johnson, Rozella Lawson, Leburn McDaniel, Ella Martin, Josie Martin, Edna Moore, Howard Moore, Elva Owens, Jess Pack, Susie Pack, Wise Seizemore, Malcolm Spencer, May Spencer, Tilden Ray Stumbo, Caroline Tackett, Dock Tackett, Ethel Tackett, Frel Tackett, Mousse Turner, Berlan Tuttle, Fisher Tuttle, Norcie Tuttle.

GAYHEART No. 59 - Lawrence Dye. MARE CREEK No. 60 - Florence Boggs, Greenwade Burchett, Maxie Burchett, Luther Canada, Mary Canada, Laura Chandler, Denver Collins, Maudie Foley, Stanley Fritz, Audrey Garrett, Zeith Goble, Amos Garrett, Geraldine Hamilton, Halleck Hamilton, John H. Hunt, Ferdie Johns, Bill Hall, Florence Hall, Ida Hall, Jenetta Hall, Jimmy Ray Hall, Dorothy Reed, C. S. Rood, Ballard Scaif, Henry P. Scaif, Ezra Shortridge, Albert Spradlin, Ella Stewart, John Stewart, Stella Stover.

TINKER FORK No. 61 - Vina Bryant, John Cross, Elijah Hall, Lurle Hall, Able Hamilton, Alice Hamilton (Purge 1945 Reg. Dup.), Andy Hamilton (Purge old card), Delphia Hamilton (Purge old card), Edna Hamilton, Elijah Hamilton, Lizzie Hamilton (Dup. Purge 1937 and 1940 Reg.), Thomas Hamilton, Tom Hamilton (Purge old card), Etta Moore, Ella Newsome, Monroe Newsome, Arnold E. Tackett.

NOTICE

The Floyd County Board of Education offers for sale to the highest and best bidder the following school buses, in running condition as is: 1-1949 Ford, Motor No. 905794 1-1950 Chevrolet Motor No. HEA 1018000 1-1949 Chevrolet Motor No. GEA 598920 The Board also has for sale certain junk iron. Bids should be per pound and weight slip shown for the amount of iron received. This property may be seen at Allen School and Garage. These bids should be before the Board of Education on or before March 1, 1960 at 1:00 o'clock p.m. at the Superintendent's office. The Board reserves the right to reject any and all bids. Floyd County Board of Education Virgil O. Turner County Superintendent 2-11-3t.

NOTICE

The Floyd County Board of Education will receive bids from suppliers for the following lumber and building materials. Bids should be received on or before March 1, 1960, at 1:00 o'clock p.m., at the Superintendent's office. Materials will be picked up within the county, and bids should include the price of shipment to Floyd county. 2,000 ft. 1" dressed lumber, B or better. 2,000 ft. 2" dressed lumber, B or better. 1,000 ft. white pine 1 x 122 shelving 10 pieces 4 x 8 x 5/8 plycord 20 sheets tempered masonite 4 x 8 x 1/8 plywood-finished on one side 10 pieces of 4 x 8 x 1/4 plywood The Board reserves the right to reject any and all bids. Floyd County Board of Education V. O. Turner County Superintendent 2-11-3t.

NOTICE

The Floyd County Board of Education will receive bids from suppliers to furnish the following list of tires and tubes. Bids to be opened March 1, 1960, at 1:00 p.m. at the Superintendent's office in the Court House. 40-900 x 20 10-ply tires; 10-750 x 20 10-ply tires; 30-900 x 20 tubes; 20-750 x 20 tubes; 20-650 x 16 6-ply tires; 15-650 x 16 tubes; 8-710 x 15 tires; 4-710 x 15 tubes. These tires to be first line nylon with black sidewall, tube type, used on original equipment. The Board reserves the right to reject any and all bids. Floyd County Board of Education V. O. Turner County Superintendent 2-11-3t.

SECOND EAST KY. LAKE TO BE CREATED IN FALL

Eastern Kentucky's newest lake will be formed next fall, says the Louisville district office, U.S. Corps of Engineers. This compartment, to be formed by Buckhorn dam on the Middle Fork of the Kentucky River, will provide the area a second body of water to go along with Dewey Lake as an attraction to fishermen, boaters and vacationists. It will serve primarily as a flood control project.

The lake to be formed is looked upon as potentially a choice fishing spot, and if the muskellunge now present in the Kentucky River survive under lake conditions the reservoir will be one of the few where that species will furnish sport for anglers.

The dam itself is located half a mile upstream from Buckhorn, Perry county. It is a rock-and-earth fill 162 feet in height and 1,020 feet in length at the top. Overall cost of the project has been placed at slightly above \$10,000,000. Its building has required relocation of 9.9 miles of state highways.

Latest contract to be let there will be for the construction of nine concrete-surfaced boat-launching ramps at five locations, bituminous surfaced access roads and parking areas. Bids on these projects will be opened March 1.

Otter Creek, Gays Creek and Leatherwood are some of the streams which will form arms of the lake when it is impounded.

MASTER COMMISSIONER'S SALE FLOYD CIRCUIT COURT

Taulbee McGuire, Plaintiff Vs. NOTICE OF SALE Ernest Reynolds, Defendant. By virtue of a judgment and order of sale of the Floyd Circuit Court rendered and entered at the February term, 1960, in the above styled cause I shall proceed to offer for sale at the Courthouse door in Prestonsburg, Kentucky, to the highest and best bidder, at public auction, on the 12 day of March, 1960, at 10 o'clock, a.m., same being the first day of the regular term of the Floyd County Court, upon a credit of 6 months, the following described property, to-wit: Lots 77 and 78 to the Johns Addition of Dwale, Kentucky. For the purchase price the purchaser must execute bond with approved surety or sureties, bearing legal interest from the day of sale until paid and having the force and effect of a judgment with a lien retained upon said property as a further security. Bidders will be prepared to comply promptly with these terms. Given under my hand, this 13 day of February, 1960. BARKLEY STURGILL Special Commissioner Floyd Circuit Court 2-18-3t.

Mrs. Dona Caudill, 49, Of Bypro, Dies Tuesday; Funeral Held Saturday Mrs. Dona Caudill, 49, of Bypro, died at the Beaver Valley hospital, Tuesday of last week of a brain hemorrhage. She was ill only three days. Mrs. Caudill was a daughter of Elisha and Hulda Jones Cole. Surviving sons and daughters are Norman Caudill, Springfield, Ohio, Romab Caudill, and Dennis Caudill, both of Bypro, Mrs. Anna B. Johnson, of Martin, Mrs. Nannie Johnson, of Salisbury, and Miss Norma Gene Caudill, of Bypro. A sister, Mrs. Myrtle Newsome, oforton, survives. Funeral rites were conducted at 10 a.m., Saturday, at the home of Albert Cole on Abner Fork near Wheelwright, the Revs. Jerry Hall, Ellis Moore, Charlie Jones, Forrest McCown and Alvin Caudill officiating. Burial was made in the Monroe Hill cemetery on Abner Fork, the Marion & Call Funeral Home directing.

Call Us For Free Estimate on Aluminum Siding For Your Home or Store Front. Burke Window & Awning Sales TU 6-6803 Tom James, Salesman TU 6-2209

RUMAR TABLETS FOR RELIEF OF PAINFUL DISCOMFORTS OF ARTHRITIS and RHEUMATISM. Martin Drug Store Phone BU 5-3082 Martin, Ky.

When You Want Dignity, Service and Beauty Within Means THE SAME PERSONAL SERVICE REGARDLESS OF FUNERAL COST We personally supervise every detail. All arrangements are made in accordance with your personal preference. A thoroughly trained, courteous staff is on hand here, to give you the greatest measure of service and comfort. We arrange and complete burial services in every detail. All of our facilities are dedicated to maintain the highest-quality service for the entire community. Floyd County's Finest Equipped Funeral Home. 24-hour oxygen-equipped Ambulance Service anywhere, anytime. Air-conditioned Ambulances Phone 3119 or 3404 anytime HALL BROTHERS FUNERAL HOME Martin, Ky. Member Kentucky Funeral Directors Burial Association Eligible to service all Burial Policies

Announcement

We are authorized to announce Mrs. Ethel Smith Osborne, of Eyring, Ky., as a candidate for member of the Floyd County Board of Education, Educational Division No. 4.

Slated For Graduation At Pikeville College

Pikeville, Ky., Feb. 15 (Spl.) — Two Floyd countians are among the 10 Pikeville College students who completed their graduating requirements at mid-year and are eligible to receive their degrees at commencement, June 5. Dr. A. A. Page, college president, announced.

They are Mrs. Edna Bernice Frazier, Weeksbury, and James E. Cline, Auxier. Both have earned the degree of Bachelor of Science in Education.

Mrs. Frazier has qualified for Kentucky's provisional elementary certificate. A graduate of Maytown high school, she is the wife of Ira E. Frazier and the mother of two children.

Cline, the son of Mr. and Mrs. James B. Cline, did major work in English and minor work in biology in qualifying for the provisional high school certificate. He is a 1956 graduate of Auxier high school where he was a member of the basketball and baseball teams.

HOST TEAM IN OPENER OF DISTRICT NET MEET

Martin, the host team in the 58th district tournament which will be held at the Prestonsburg gymnasium, will open the three-day meet at 8 p.m., Tuesday, March 1, with the Bob Cats of Betsy Layne high school as its opponents. The single game comprises the entire card for the opening day.

Setser Reaches High Accuracy First Year; Horn Raises Precision

Sharpening his eye as the competition grows hotter, the Pikeville College Bears' Paul Setser has reached a new high in field accuracy for any of the first-stringers this year.

The former Auxier high school star bucketed 119 of his 245 shots from the field in the Bears' 19 games through last week for an accuracy of .486, better than any squad member with more than 20 attempts since the season got well under way. His average scoring of 15.4 points per game, second only to Donnis Butcher, holds steady from a week ago.

Everett Horn, reserve guard who became a starter as a result of mid-term casualties on the squad, has raised his precision on free-throw shooting to .813, highest this season for any of the club's regulars. Horn has dropped in 28 of his 32 chances at the foul line in playing only 261 minutes in 16 games, with half of the total in the last three weeks.

Vern Woods, still the leader at rebounding with 284 in 19 games for an average of 15.0 grabs per game, is second to Horn in foul-line accuracy. Woods has converted 62 of his 86 chances this season to stand .721 on charity attempts.

Butcher, the top pointmaker despite a fractional slump from 21.5 to 21.1 points per game, also is still a close second to Woods on the boards with 278 saves in his 19 games to average 14.6. He also retains the top spot in the assists column which he has held all year, with 124 help-yourselves for a 6.5 average, nearly half of the Bears' mean of 15.5.

The upper bracket teams will be featured in the Wednesday night sessions, the tourney favorite, Wheelwright, meeting the Wayland Wasps at 7 o'clock, and Prestonsburg encountering Maytown at 8:45.

In the first game Thursday night the winner of the Martin-Betsy Layne contest will play Auxier, with McDowell and Garrett meeting at 8:45 the same evening.

The semi-finals will be played at 7 and 8:45 Friday night. The consolation game will be at 7 p.m. Saturday, with the championship game slated for 8:45.

James Salisbury, Martin high school principal and tournament manager, said only those members of runner-up teams who are eligible for high school basketball play next season will participate in the consolation game. He also said that an all-opponent team, to be selected prior to the tournament and on the basis of season play, will supplant the usual all-tournament aggregation.

Student and reserve seat tickets are now on sale. Referees chosen for the district tournament are James Milford (Toodles) Wells and French Campbell. Frank Heinze was named timekeeper, and Gordon Moore scorer.

Trophies will be awarded the district championship team, the runner-up five, the tournament player with the best foul-shot percentage (at least 12 attempts must be made by the player to qualify), to the team showing the best brand of sportsmanship and the team having the best cheerleaders. Miniature gold basketballs will be awarded to members of both the district championship team and the runner-up and to members of the all-opponent team.

Pikeville Bears End Home Action Saturday Night

Pikeville, Ky., Feb. 15 (Spl.) — The Pikeville College Bears, in their last home game of the season, will host the Villa Madonna Rebels Saturday night in the annual homecoming game at the Pikeville College gymnasium.

Paul Butcher's Bears ran their record to 16-6 with two wins and a loss on last week's road trip, starting by breaking an eight-game win string for Georgia Southern (formerly Georgia Teachers) College, 94-79, Monday at Collegeboro, Ga. They downed the Pfeiffer College Panthers, 90-81, Tuesday at Misenheimer, N. C., then took their defeat from the Belmont Abbey College Crusaders, 71-52, at Belmont, N. C., Wednesday, as Belmont Abbey parlayed a good team and an unfriendly atmosphere into victory.

Homecoming activities at Pikeville are to include the crowning of a homecoming queen, still to be selected. The coronation by President A. A. Page will take place between halves of the Pikeville-Villa Madonna game.

The Bears will be grabbing for their second successive season championship of the Kentucky Intercollegiate Athletic Conference, which they lead with a 9-1 mark, and looking for revenge for a two-year-old loss. In the last defeat the Bruins suffered on their own floor and Villa Madonna's last appearance at Pikeville, Feb. 21, 1958, the Rebels nudged the Pikevillians 99-95, and dropped them to a 4-6 KIAC standing in the Bears' first season in the loop.

Donnis Butcher continued to pace the Bears in scoring on their southern tour with 71 points in the three games, 26 against Georgia Southern, 32 at Pfeiffer, and 19 in spite of Belmont Abbey. He and Vern Woods divided 77 rebounds in the three contests, Woods totaling 39 and Butcher 38, with half the 38 in a blazing display at Georgia Southern. Woods added 34 points, Paul Setser 29, Pete Campbell 26, and Everett Horn 19 on the trip.

Reserve guard Ken Maynard notched his second-highest score of the year with 10 points in a perfect performance against Pfeiffer, hitting two fielders and six free throws with a total of eight shots. Harry Meek got three points in the same game, and Roger Meek cashed, his only field-goal try for two points against the Georgia school.

Chester Curry, of Wheelwright, senior guard at Georgia Southern, won scoring honors in the losing cause as the Bears took their most important non-conference win of the season, clawing the Georgians 94-79, on their own court. Curry sank 11 field goals on 21 shots, and canned six of seven free throws for his game-high total of 28 points, two points higher than Butcher's 26.

The Belmont Abbey five jumped out to an early lead and pulled to a 35-22 halftime advantage, and the Bears couldn't come closer than 14 points in the last half. With big men from 6-5 to 6-8 to shoot over, the Bruins still had the game's No. 1 and No. 2 scorers in Woods, who netted 20 points, and Butcher, who racked up 19.

Against Pfeiffer the Bears put on an old-fashioned thriller, tied some 15 times, with neither side ahead by more than a few points.

SPORTS CHATTER
By GORDON MOORE

MEET THURSDAY

Sixteen diligent, hard-working, non-partisan Prestonsburg school area men will present a comprehensive report of their past six months' work, Thursday night at 7:30, in the Prestonsburg high school cafeteria.

Under the auspices of the Prestonsburg Parent-Teacher Association, this arm of the group will explain its proposed "Athletic Field Project," which is one of the biggest undertakings ever staged in Eastern Kentucky by a related school group.

Every parent and interested school supporter in the Prestonsburg school area (Prestonsburg, Allen, David, Middle Creek, Abbott Creek, Little Paint, Cow Creek, Dwayne, Emma, Bull Creek, Lancer, Brandy Kog, Risner, Pyramid, Caney Creek, Blue River, Goodloe and others, should attend the meeting and work for the completion of the proposed project.

Lexington-Dunbar, Kentucky's second ranked schoolboy basketball team, will invade the mountains this week-end, meeting Meade Memorial on Friday night and Pikeville on Saturday night. This all-Negro unit has represented the Lexington region in the state tournament for the past two seasons and only last week drew in the opening game with Lexington Lafayette, which is ranked No. 1.

Dunbar boasts one of the tallest clubs in the state with three starters six-foot-five or over. They man-handled the local Black Cats by the tune of 84-37 last Friday, limiting the locals to only six and two points, respectively, in the second and third periods.

They hold a 73-64 previous win over Meade Memorial and also downed Pikeville, 54-43, in Lexington on Feb. 5.

Results of the four-man race for Board member from the 15th and 16th regions on the Kentucky High School Athletic Association Board of Control will be announced soon. Candidates were: Oran Teater, superintendent of Paintsville city schools; Webb Young, superintendent of Boyd county schools; John Bill Trivette, Pikeville basketball coach, and W. F. Doane, Belfry high school principal.

The new member will replace the current president, Russell Williamson, Inez high principal, on the board, July 1.

Wheelwright, 58th district favorite, drew in the upper bracket at Monday night's draw for the district tournament. Don Wallen's Trojans meet Wayland in their first game, and Prestonsburg and Maytown complete the top bracket.

In the lower round Martin and Betsy Layne are paired in the Tuesday opener and the winner will vie with Auxier. McDowell and Garrett are the other lower bracket teams.

FRIDAY'S SCHEDULE
Prestonsburg Doubleheader
Pikeville vs. Garrett
Inez vs. Prestonsburg
Wheelwright at McDowell
Betsy Layne at Maytown
Martin at Wayland

LAST WEEK'S SCORES
Prestonsburg Doubleheader
Pikeville vs. Garrett
Inez vs. Prestonsburg
Wheelwright at McDowell
Betsy Layne at Maytown
Martin at Wayland
Lexington Dunbar 84
Prestonsburg 37
Maytown 81, Auxier 43

FLOYD COUNTY STANDINGS
58th District

Wheelwright	21	3
Martin	18	8
Wayland	13	8
Maytown	17	9
McDowell	17	9
Betsy Layne	10	9
Auxier	1	11
Prestonsburg	5	13
Garrett	2	17

Dr. R. M. Wilhite, Jr.
Chiropractor
Office Phone, 93; Res, 84
PAINTSVILLE, KY.

Women Offered Choice In Air Corps Service

Young women who are high school graduates and who are between the ages of 18 and 34 can now receive the schooling of their choice in the women's Army corps before enlistment. Women may select any of the following schools: Stenography, finance procedures, machine accounting, teletype operations, dental specialist, dental laboratory, medical specialist, operating room procedures, intelligence, cryptography, broadcast specialist, photography, and many others.

All qualified women who are interested in security, travel, education and specialized training should contact U. S. Army recruiter, M/Sgt. Marvin E. Craft, whose office is in the Post Office, Prestonsburg.

WEED C
Several experimental plots were set up at the University of Kentucky Station at Lexington for strawberry and orange plots.

Let's be sure we get a good time in our educational system.

I am running in Edu. Dist. 5 to vote with Ray Howard and John Hall to help them to improve education in Floyd county.

I will appreciate assistance from anyone who should want to help that lives outside my district.

JOE I. MAY

FLOWERS
For Every Occasion
LEETE'S
Member F.D.T.
Court St. Phone 7593
WE DELIVER

THERE'S NO OTHER REEL LIKE IT!



Johnson CENTENNIAL Spin-Bait Reel

FIRST on famous waters

Here's a Bait Casting Reel with Spinning performance, gives you no-backlash casting with greater distance. You get power drive retrieve, Exclusive Duo-Matic Drag that stops the biggest fish. Own the newest, own the best... the Johnson Centennial Spin-Bait Reel.

See all three... one is for you

Centennial Spin-Bait Reel
Century Spinning Reel
Citation Spinning Reel

MALLORY STORES, Inc.
DAVID, KY. • AUXIER, KY.

GOODYEAR TIRES
TOPS AUTO STORE

HUNTINGTON MEMORIAL FIELD HOUSE
2 Days Only-4 Complete Shows

Ringling Bros AND BARNUM BAILEY CIRCUS

FOR CHOICE SEATS
ORDER BY MAIL NOW

Make Check or M. O. payable to Ringling Bros., P. O. Box 1766, Huntington, W. Va. Enclose Self Addressed Stamped Envelope.

Children Half Price
12 Years and Under—Any Seat
All Shows—Matinee or Night

Admission All Shows \$1.50-\$2.00
\$2.50-\$3.00
\$3.50
Taxes Included

Wednesday Thursday March 2 & 3
Matinee 4 p. m.
Nights 8 p. m.

A Salute to -

THE TOP PRODUCER IN THE NATION FOR

"The Family Fraternity"
WOODMEN OF THE WORLD LIFE INSURANCE SOCIETY
Home Office: 1728 Farnam Street
Omaha 2, Nebraska

Ernest Turner of Drift
Field Rep. Phone: McDowell 2982

Mr. Turner led the "Woodmen of the World President's Club," the Woodmen Society's leading producers, last month. This record makes him one of the nation's top fraternal field men. He'll be happy to help you solve your life insurance problems.

Smart Women... BANK their savings

It's smart to save; even smarter to save where you can get multiple banking services under one roof. We will welcome your account here!

FIRST GUARANTY BANK
MARTIN, KY.
Member Federal Deposit Insurance Corporation

WORTH MORE BECAUSE THEY WORK MORE!

Compare this list of Chevy advances with the features ordinary trucks are still talking about. You'll see why Chevy trucks get more work done in a day... why they go extra thousands of miles before trade-in time. These Sturdi-Bilt Sixties aren't just new, they're a full scale revolution!

6'S SWORN TO SAVE
Chevy's 6-cylinder engines are set to squeeze extra miles out of every drop of fuel. They're long famous for low fuel consumption, high performance.

SHORT STROKE V8'S
Power-packed for peak performance, Chevy's husky V8's make child's play out of the toughest hauls. They have a mind tuned to economy, too, that keeps costs down, profits up.

SLICK NEW SUBURBAN CARRYALLS
These handsome new handy haulers "double in brass" — can transport eight passengers or up to 950 lbs. of payload. Rear and center seats are easy to remove and replace when necessary. For work or for pleasure, these double-duty beauties are best for both!

CABS FOR BIG GUYS
Big guys get a bigger break in a Chevy cab. There's plenty of space inside to stretch out and relax; more room for hats and hips, more room for wide shoulders and long legs. There's horizon-wide visibility through a windshield with 26% more glass area; a new see-at-a-glance instrument panel. Cabs are safer, too, up to 67% more rigid.

TORSION-SPRING RIDE
Each front wheel, suspended independently of the other, is free to step individually over bumps. And shockproof torsion springs up front soak up the jars and jolts before they reach the body. With three rugged new tailored-to-the-truck rear suspensions to further reduce road shocks, Chevy gives you the smoothest truck ride you've ever felt.

NO SHIMMY, NO WHEEL FIGHT
Drive a '60 Chevy. Just once. Right away you'll notice the absence of I-beam shimmy and wheel fight common on ordinary trucks.

NEW DOLLAR-SAVING PRICES
Chevrolet's low prices make big truck news for '60. They mean money in your pocket on model after model. Step-Vans, 4-Wheel Drives, many light-duty models with automatic transmissions—all are lower priced. Also, prices have been reduced on all optional V8's.

SEE YOUR DEALER
It could be the most important visit you make in '60. When you've seen these new Chevies, you'll agree they're the world's most advanced trucks. Then drive one and find out why.

CHEVROLET

1960 STURDI-BILT CHEVROLET TRUCKS

See your local authorized Chevrolet dealer for fast delivery, favorable deals!

MUSIC - COLVIN MOTOR CO., Inc.
South Lake Drive • Prestonsburg, Ky.

YEAR
BATTERIES
AUTO STORE

Audubon State Park in west Kentucky is dedicated to John James Audubon, famous bird artist and naturalist, who drew inspiration for his pen and brush in this locale during the period 1810 to 1819.

Cranberries are one of the most successful fruits for home freezing. The simplest and easiest way to freeze cranberries is to put them into freezer bags or other containers, without sweetening; then seal and freeze.

Covered Ridges Are Vanishing From Kentucky

The old wooden covered bridge is a vanishing landmark in Kentucky. In 1945 there were 45 examples of this picturesque type of structure spanning Kentucky streams. By 1951, only three of these had fallen victim to progress. But the latest count shows only 18 of the spans standing, according to the Department of Highways.

Many citizens of the Commonwealth—especially the older ones—have nostalgic sentiments toward the ancient spans which served the purpose of a bygone day. Before the last covered bridge is piled on the scrap heap of antiquity, Kentuckians who have never seen one would do well to view one of these monuments to the state's romantic past. They can be found in only nine counties—Bourbon, Bracken, Fleming, Greenup, Lawrence, Lewis, Mason, Robertson and Washington.

The covered bridge is unique in structure and surrounded by an aura of history, most of them being 75 to 100 years old. They were built when iron and steel beams were not to be had.

The first covered bridges were limited in span by the length of the beams which could be, sawed out of rough logs. Later the builders devised a plan of setting a pair of heavy timbers, one above the other with diagonal planking nailed to the sides—creating a crude but practical truss.

Perhaps the best known builder was Lewis Wernag (1769-1843), a German. His masterpiece once spanned the Kentucky River at Camp Nelson, reaching from bank to bank with no support in the middle.

Specifications usually required that "the timber be of good yellow poplar and the bridge be well covered with a good shingle roof and the sides well boxed in with a good grade of weather-boards." Presumably, the siding and the roof were to protect the trusses, floors and underpinnings from snow and rain.

Another theory to account for the roofs was that the builders were carpenters, accustomed to building frame houses, the design of which was copied in the bridges. The roofs had to be high enough "for a covered wagon or one loaded with hay to pass under it with convenience."

VETERAN DR. HONORED AT 85 WITH HIS FIRST BIRTHDAY PARTY

Until Feb. 1, which marked his 85th birthday, Dr. Mark Dempsey, of Garrett, "simply hadn't ever had time" for a birthday party, and he might not have had time for one then, had not his family arranged it as a surprise.

A West Virginian by birth and remotely related to Jack Dempsey, the ring's Manassas Mauler, Dr. Dempsey has practiced his profession for years in the Right Beaver section of this county and in adjoining Knott and Magoffin counties.

W'wright Woman's Club Sponsors Bowling Benefit

The Wheelwright Woman's Club sponsored a bowling benefit for the March of Dimes on Sunday, Feb. 7. John Rupe and Steve Benedict, proprietors of the Wheelwright bowling alley, gave their time and all proceeds from bowling for the day to the polio benefit.

Gene Elder was chairman of the benefit and was responsible for setting up the leagues to bowl. Three leagues participated: the Golf Club League, Men's League and the Ladies' League.

Men receiving prizes were: Gene Elder, high line; Shorty Jamerson, low line; and George Paine, most splits in one game. Women prize-winners were: Betty Lee Deshotel, line; and Garrett Rainey, most high line; Clara Holbrook, low splits in one game.

The benefit netted \$56.10 for the March of Dimes.

Mrs. Mary Smith Tate, Age 87, Knott-Co. Native, Dies Of Heart Condition

Mrs. Mary Smith Tate, 87, Knott county native, died at Johnson City, Tenn., Tuesday of last week of a heart condition. She was the widow of James Tate and a daughter of the late William Smith, Sr. and Darcas Amburgey Smith. She was a member of the Church of God.

Surviving brothers and sisters are Joe Smith, of Pine Top, Ky., Vine E. Smith, Falls Branch, Tenn., Rachel B. Smith, of Bypro, Mrs. Cassie Bevins, Casplewood, Va., Mrs. Marcha LaFrance, Germantown, Md., Mrs. Ada Turner, Falls Branch, Tenn.

Funeral services were held Friday, at 1 p.m., at the residence of Mrs. W. D. Osborne, of Bypro, and burial followed in the Osborne cemetery there under the direction of Merion & Call Funeral Home.

Cain Slates Visit To Assist Veterans

Roy M. Cain, contact representative of the Kentucky Disabled Ex-Service Men's Board, is in this county today (Thursday) for the purpose of aiding veterans and their dependants in filing and prosecuting claims for benefits to which they may be entitled from the Veterans Administration.

Today, he was at Wayland, and the Beaver Hardware, Martin.

Tomorrow (Friday) he will be in Tackett & Tackett's office in Prestonsburg.

FOR ALL VETERANS

When the Bonus for Veterans was voted on, November 3rd, 1959, it was my belief, and the belief of most people, that if the people of Kentucky voted for the Bonus, Veterans who served in the continental United States would receive a flat \$300.00 bonus and those who served outside the United States or overseas would receive \$500.00.

It was my belief, as well as most everyone else's, that if you were a Veteran and entered service while living in Kentucky that you would be entitled to the bonus. It is my belief that the residence clause is not in accord with the original intent of Kentucky voters. I have therefore urged everyone who has any connections with this bill to demand that it be revised to serve the purpose for which it was intended by the people of Kentucky.

HOLLIE CONLEY
Commonwealth Attorney
(Adv.)

USE TIMES WANT ADS!

For All Your
ELECTROLUX
NEEDS

Write

CON BURCHWELL

Langley, Ky.

or Call BU 5-3302

WHICH FORD ECONOMY TWIN IS FOR YOU?

CHOOSE EITHER ONE AND WE FORD DEALERS WILL MAKE YOU THE DEAL OF A LIFETIME!

America's lowest-priced six-passenger car... up to \$124 less than other compact cars*

Falcon Tudor Sedan



SAVE THE NEW-SIZE WAY!
The new Ford Falcon costs up to \$124 less than other 6-passenger compacts!

Why is Falcon first in sales among all compact cars? Look what you get! Room for six king-sizers and loads of luggage. Up to 30 miles per gallon, 4,000 miles between oil changes. For the big thrill—come in and drive a Falcon!

*Based on manufacturers' suggested retail delivered prices



Fairlane 500 Club Sedan

SAVE THE FULL-SIZE WAY!

The new Fairlane 500... bigger, finer in every way... yet priced up to \$142 less* than last year!

How about that hood, styled sweet and low so you see where you go? How about fine-car features like the cigarette lighter and color-keyed steering wheel... things you'd think would cost extra? And room... up to four inches more for shoulders! And new wide tread that hugs the curves! Yet the price is hundreds less than cars that aren't nearly as fine!



F.D.A.F.

FORD—The Finest Fords of a Lifetime FALCON—The New-size Ford THUNDERBIRD—The World's Most Wanted Car

FLOYD MOTOR COMPANY, Inc.

Phone 2629 — Prestonsburg, Ky.

See "FORD STARTIME" in living color Tuesdays on NBC-TV

SUBSCRIBE FOR THE TIMES!



It takes 1,000 tons of coal to build just 1 mile of 4-lane concrete highway!

When concrete highways go in... coal usage goes up! That's why concrete is the number-one choice for the new highway into the coal fields of eastern Kentucky.

Eastern Kentucky needs new coal markets—and new highways. Concrete brings the two together. The result? Better business. Better highways.

Today's new-type concrete is smooth and solid all the way... is laid flat to stay flat. It has a life expectancy of 50 years and longer, too, with upkeep expense 75% less than for asphalt (based on Kentucky records). This is vital because of Kentucky's mounting maintenance costs.

Safety is another consideration. Concrete's light color provides greater visibility for mountain driving. Skid dangers are reduced, too, thanks to concrete's grainy, gritty surface texture.

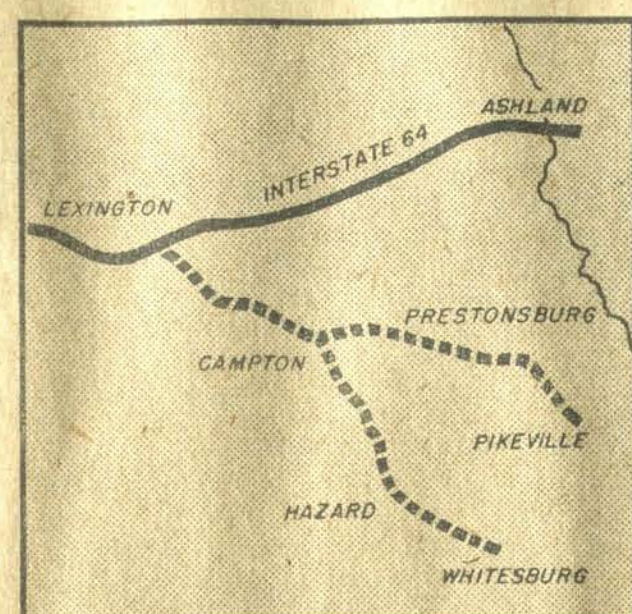
Add it up. Concrete means greater coal usage, greater driving comfort and safety... and, greater maintenance savings.

Mr. Fred Bullard, Executive Secretary of the Kentucky Coal Association, has this to say, "Cement and reinforcing steel are two basic ingredients of the modern concrete highway. With their high consumption of coal during manufacture, the Association believes that paving eastern Kentucky's new highway with concrete will be an invaluable aid to the state's coal industry."

This message sponsored jointly by:

THE PORTLAND CEMENT ASSOCIATION Louisville, Ky.
A national organization to improve and extend the uses of concrete

THE KENTUCKY COAL ASSOCIATION Hazard, Ky.
An organization working for the interests of the Kentucky coal industry



Governor Combs' proposed highway linking eastern Kentucky coal fields to Interstate System.

No pavement could be stronger even if carved from solid rock!

FOR HIGHWAYS WITH A SOLID FUTURE

NEW-TYPE Concrete

CANDIDATE FOR BOARD OF EDUCATION

ROSS "BUD" COOLEY

District No. 3

CURTIS STUMBO

District No. 4

WALTER AKERS

District No. 5

We support the "For the Children" program—
Let's finish the crusade that was started two years ago.

(Pol. adv.)

ENDORSEMENT

We heartily endorse the candidacy of

ROSS "BUD" COOLEY, CURTIS STUMBO and WALTER AKERS

FIRST—These men were chosen in a Democratic way by citizens of their own school district—picked by citizens who are interested in the welfare of the schools.

SECOND—They endorse and will vote for the "For The Children" program—A school program which has been hammered out by talking and discussing the needs of the schools with students, parents and teachers throughout Floyd County.

We stand on the threshold of great advances in education in Kentucky. Much of the sales tax dollar will be returned to us for use in Education. We must have an unselfish, farsighted Board of Education in Floyd County who will spend this money wisely and in the best interest of our children.

All too many of our people have taken the blessings of education for granted. This must not be so of us in Floyd County this year. The issue at stake is the education of our children. We must all show our interest by working actively for the election of BUD COOLEY, CURT STUMBO and WALTER AKERS. We are thoroughly convinced that they have the welfare of our children at heart.

RAY HOWARD, Board Member, Dist. 1

JOHN G. HALL, Board Member, Dist. 2